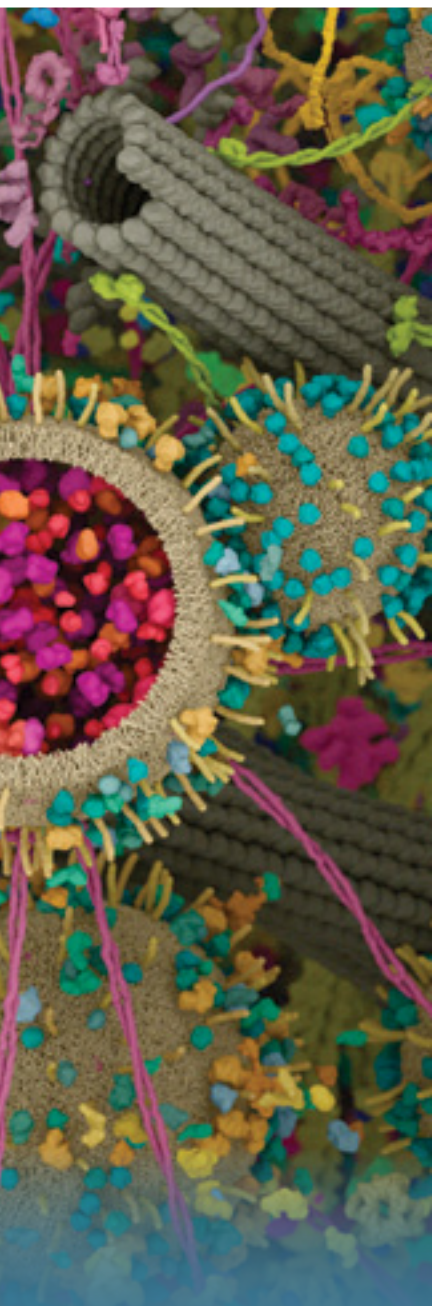




Cell Signaling

TECHNOLOGY®

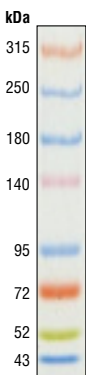


[www.cellsignal.com](http://www.cellsignal.com)

# Protein Markers

from Cell Signaling Technology®

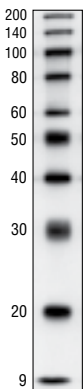
Prestained Protein Marker,  
High Range (43–315 kDa) **#12949**



Prestained Protein Marker,  
Low Range (1.7–42 kDa) **#13070**



Biotinylated Protein Ladder  
Detection Pack **#7727**



Prestained Protein Marker,  
Broad Range (11–190 kDa) **#13953**

