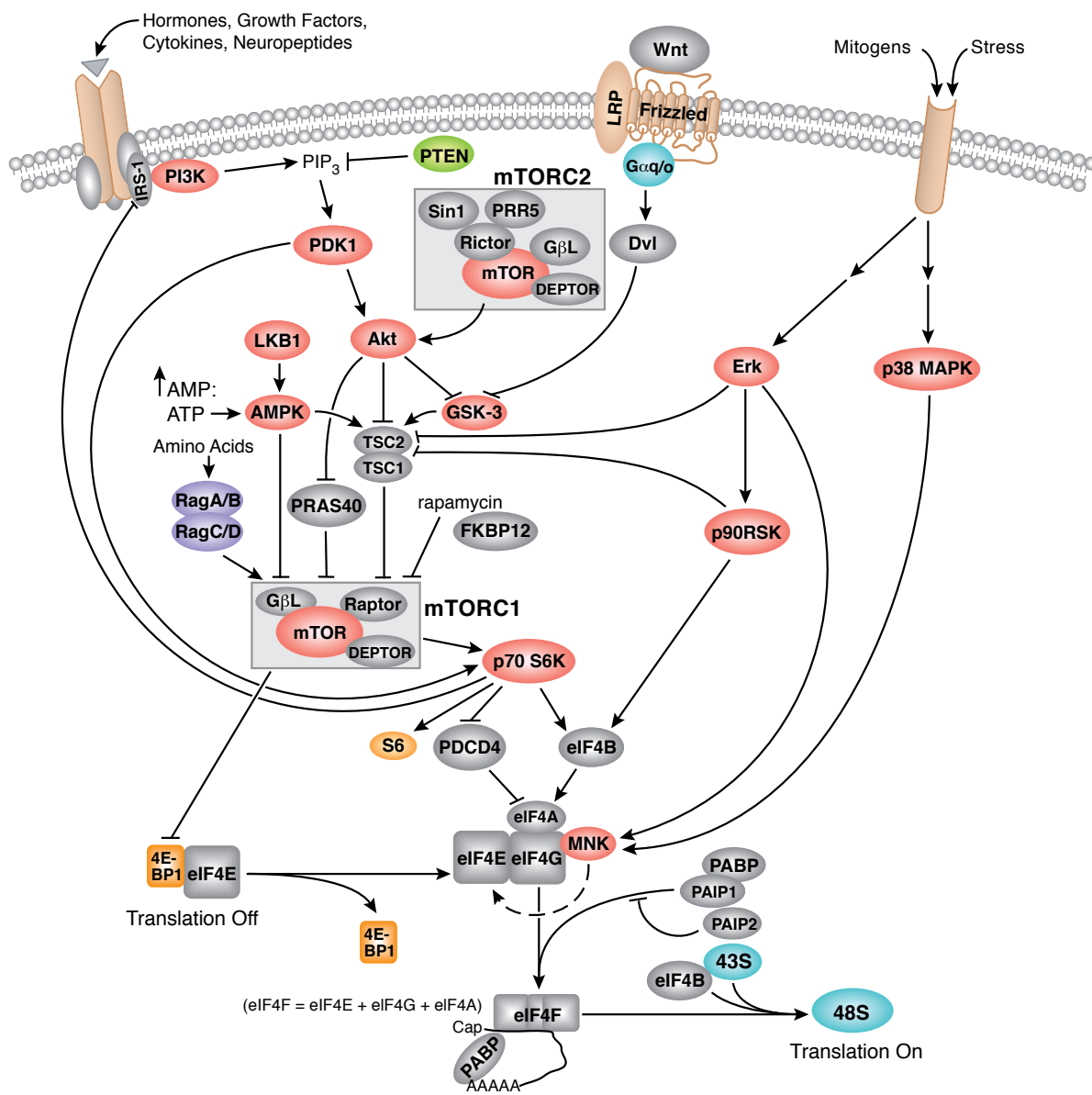


Antibodies and Related Reagents for Translational Control

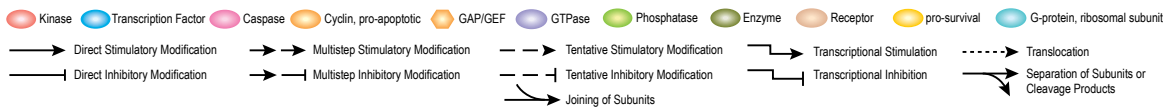
Product Pathways

- Motif Antibodies
- Chromatin Regulation
- MAP Kinase Signaling
- Apoptosis and Autophagy
- PI3K / Akt Signaling
- Cellular Metabolism
- > **Translational Control**
- Development and Differentiation
- Stem Cell and Lineage Markers
- Ca²⁺, cAMP, and Lipid Signaling
- Cell Cycle/Checkpoint Control
- NF-κB Signaling
- Lymphocyte Signaling
- Neuroscience
- Tyrosine Kinases and Docking Proteins
- Angiogenesis
- Nuclear Receptors and Phosphatases
- Cytoskeletal Signaling
- Adhesion
- Protein Folding and Stability

Translational Control: Regulation of eIF4E and p70 S6 Kinase

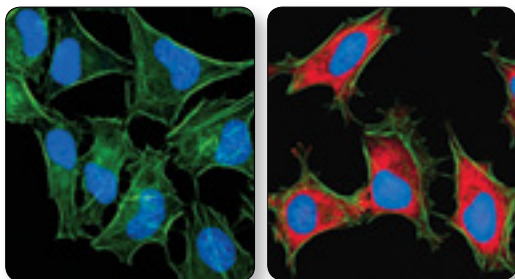


© 2002 – 2011 Cell Signaling Technology, Inc.

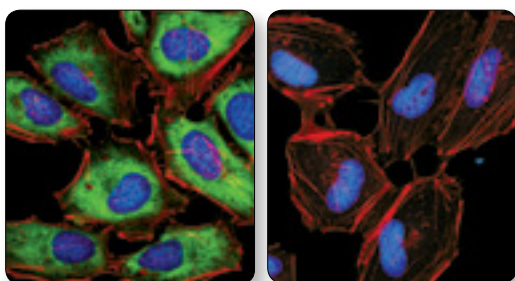


For Research Use Only.
Not For Use In
Diagnostic Procedures.

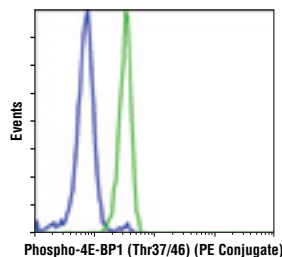
Translational Control



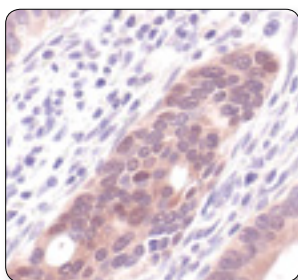
Phospho-S6 Ribosomal Protein (Ser235/236) (D57.2.2E) XP® Rabbit mAb (Alexa Fluor® 594 Conjugate) #9865: Confocal IF analysis of HeLa cells, treated with LY294002 #9901, Rapamycin #9904, and U0126 #9903 (left), or insulin-treated (right) using #9865 (red). Actin filaments were labeled with Alexa Fluor® 488 phalloidin (green). Blue pseudocolor = DRAQ5® #4084 (fluorescent DNA dye).



Phospho-S6 Ribosomal Protein (Ser240/244) (D68F8) XP® Rabbit mAb #5364: Confocal IF analysis of HeLa cells, insulin-treated (left) or treated with LY294002 #9901 (right), using #5364 (green). Actin filaments were labeled with DY-554 phalloidin (red). Blue pseudocolor = DRAQ5® #4084 (fluorescent DNA dye).



Phospho-4E-BP1 (Thr37/46) (236B4) Rabbit mAb (PE Conjugate) #7547: Flow cytometric analysis of Jurkat cells, untreated (green) or treated with LY294002 #9901, Wortmannin #9951, and U0126 #9903 (blue), using #7547.



Phospho-4E-BP1 (Thr37/46) (236B4) Rabbit mAb #2855: IHC analysis of paraffin-embedded human colon carcinoma using #2855.

S6 Ribosomal Protein Antibody Comparison

	Reactivity	WB	IP	IHC	Flow	IF
#4858 Phospho-S6 Ribosomal Protein (Ser235/236) (D57.2.2E) XP® Rabbit mAb	H, M, R, Mk, Sc	++++	-	++++	+++	+++
#4803 Phospho-S6 Ribosomal Protein (Ser235/236) (D57.2.2E) XP® Rabbit mAb (Alexa Fluor® 488 Conjugate)	H, M, R, Mk, Sc	N/A	N/A	N/A	+++	+++
#3985 Phospho-S6 Ribosomal Protein (Ser235/236) (D57.2.2E) XP® Rabbit mAb (Alexa Fluor® 555 Conjugate)	H, M, R, Mk, Sc	N/A	N/A	N/A	N/T	+++
#9865 Phospho-S6 Ribosomal Protein (Ser235/236) (D57.2.2E) XP® Rabbit mAb (Alexa Fluor® 594 Conjugate)	H, M, R, Mk, Sc, (C)	N/A	N/A	N/A	N/A	+++
#4851 Phospho-S6 Ribosomal Protein (Ser235/236) (D57.2.2E) XP® Rabbit mAb (Alexa Fluor® 647 Conjugate)	H, M, R, Mk, Sc	N/A	N/A	N/A	+++	+++
#3945 Phospho-S6 Ribosomal Protein (Ser235/236) (D57.2.2E) XP® Rabbit mAb (Biotinylated)	H, M, R, Mk, Sc	++++	N/T	N/A	+++	N/T
#5316 Phospho-S6 Ribosomal Protein (Ser235/236) (D57.2.2E) XP® Rabbit mAb (PE Conjugate)	H, M, R, Mk, Sc	N/A	N/A	N/A	++++	N/A
#4856 Phospho-S6 Ribosomal Protein (Ser235/236) (2F9) Rabbit mAb	H, M, R	++	N/T	-	++	++
#4854 Phospho-S6 Ribosomal Protein (Ser235/236) (2F9) Rabbit mAb (Alexa Fluor® 488 Conjugate)	H, M, R	N/A	N/A	N/A	++	++
#4857 Phospho-S6 Ribosomal Protein (Ser235/236) (91B2) Rabbit mAb	H, M, R	++	N/T	+++	N/T	++
#2211 Phospho-S6 Ribosomal Protein (Ser235/236) Antibody	H, M, R, Mk, Sc, (C, X)	+++	++	+++	++	++
#5364 Phospho-S6 Ribosomal Protein (Ser240/244) (D68F8) XP® Rabbit mAb	H, M, R, Mk	++++	++++	++++	++++	++++
#5018 Phospho-S6 Ribosomal Protein (Ser240/244) (D68F8) XP® Rabbit mAb (Alexa Fluor® 488 Conjugate)	H, M, R, Mk	N/A	N/A	N/A	++++	++++
#4278 Phospho-S6 Ribosomal Protein (Ser240/244) (61H9) Rabbit mAb (Biotinylated)	H, M, R, Mk	++	N/T	N/A	+++	N/T
#2215 Phospho-S6 Ribosomal Protein (Ser240/244) Antibody	H, M, R, Mk, Z, (C, X)	+++	++	+++	++	+++
#2217 S6 Ribosomal Protein (5G10) Rabbit mAb	H, M, R, Mk	++	N/T	+++	-	+++
#2317 S6 Ribosomal Protein (54D2) Mouse mAb	H, M, R, Mk, Dm	++	++	++++	++	++
#5317 S6 Ribosomal Protein (54D2) Mouse mAb (Alexa Fluor® 488 Conjugate)	H, M, R, Dm	N/A	N/A	N/A	+++	N/T
#3944 S6 Ribosomal Protein (54D2) Mouse mAb (Biotinylated)	H, M, R, Mk	++	N/T	N/A	++	N/T

Testing Key: ++++ Very Highly Recommended / +++ Highly Recommended / ++ Recommended / - Not Recommended / N/T Not Tested / N/A Not Applicable

4E-BP1 Antibody Comparison

	Reactivity	WB	IP	IHC	Flow	IF
#2855 Phospho-4E-BP1 (Thr37/46) (236B4) Rabbit mAb	H, M, R, Mk, Dm	+++	N/T	++++	++	+++
#2846 Phospho-4E-BP1 (Thr37/46) (236B4) Rabbit mAb (Alexa Fluor® 488 Conjugate)	H, M, R, Mk, Dm	N/A	N/A	N/A	++	N/T
#5123 Phospho-4E-BP1 (Thr37/46) (236B4) Rabbit mAb (Alexa Fluor® 647 Conjugate)	H, M, R, Mk, Dm	N/A	N/A	N/A	++	N/T
#3929 Phospho-4E-BP1 (Thr37/46) (236B4) Rabbit mAb (Biotinylated)	H, M, R, Mk, Dm	+++	N/T	N/A	++	N/T
#9459 Phospho-4E-BP1 (Thr37/46) Antibody	H, M, R, Mk	++	N/T	N/T	N/T	-
#4923 Nonphospho-4E-BP1 (Thr46) (87D12) Rabbit mAb	H, M, R, Mk	++	-	N/T	++	N/T
#9456 Phospho-4E-BP1 (Ser65) (174A9) Rabbit mAb	H, Mk	++	++	-	-	-
#9451 Phospho-4E-BP1 (Ser65) Antibody	H, M, R, Mk	++	++	-	N/T	-
#9455 Phospho-4E-BP1 (Thr70) Antibody	H, M, R, Mk	++	++	-	N/T	-
#9644 4E-BP1 (53H11) Rabbit mAb	H, M, R, Mk	++++	++	++++	+++	+++
#9452 4E-BP1 Antibody	H, M, R, Mk	++++	++	-	-	-

Testing Key: ++++ Very Highly Recommended / +++ Highly Recommended / ++ Recommended / - Not Recommended / N/T Not Tested / N/A Not Applicable

Supporting Products

We offer a growing list of complementary products to support your research, such as epitope tag antibodies, isotype controls, and secondary antibodies. Please see the supporting products section of our catalog at www.cellsignal.com/catalog/

Antibody Sampler Kits

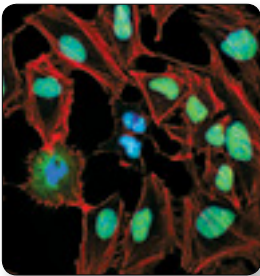
- #9955 4E-BP Antibody Sampler Kit
- #9956 ER Stress Antibody Sampler Kit
- #4759 ER Protein Folding Antibody Sampler Kit
- #9964 mTOR Pathway Antibody Sampler Kit
- #9864 mTOR Regulation Antibody Sampler Kit
- #9862 mTOR Substrates Antibody Sampler Kit
- #2903 p70 S6 Kinase Substrates Antibody Sampler Kit
- #9778 Rag Protein Antibody Sampler Kit
- #4487 RNAi Machinery Antibody Sampler Kit
- #4763 Translation Initiation Complex Antibody Sampler Kit
- #9918 Translational Control Antibody Sampler Kit

PathScan® Multiplex IF Kits

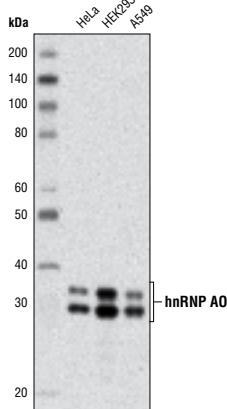
- #8999 PathScan® Signaling Nodes Multiplex IF Kit

PhosphoPlus® Antibody Duets

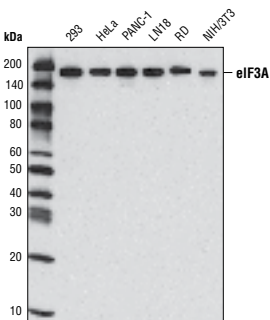
- #8209 PhosphoPlus® p70 S6 Kinase (Thr389) Antibody Duet
- #8207 PhosphoPlus® S6 Ribosomal Protein (Ser235/Ser236) Antibody Duet



DDX5 (D15E10) XP® Rabbit mAb #9877: Confocal IF analysis of HeLa cells using #9877 (green). Actin filaments were labeled with DY-554 phalloidin (red). Blue pseudocolor = DRAQ5® #4084 (fluorescent DNA dye).



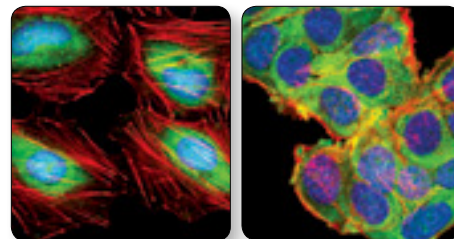
hnRNP A0 (D8A3) XP® Rabbit mAb #5545: Western blot analysis of extracts from various cell lines using #5545.



eIF3A (D51F4) XP® Rabbit mAb #3411: Western blot analysis of extracts from various cell lines using #3411.

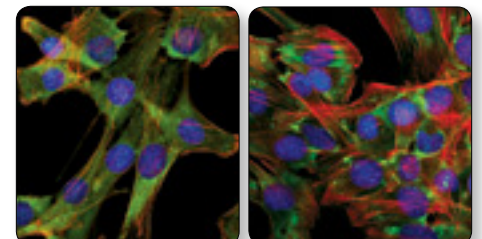
Antibodies

- #2855 Phospho-4E-BP1 (Thr37/46) (236B4) Rabbit mAb
- #2846 Phospho-4E-BP1 (Thr37/46) (236B4) Rabbit mAb (Alexa Fluor® 488 Conjugate)
- #5123 Phospho-4E-BP1 (Thr37/46) (236B4) Rabbit mAb (Alexa Fluor® 647 Conjugate)
- #3929 Phospho-4E-BP1 (Thr37/46) (236B4) Rabbit mAb (Biotinylated)
- New** #7547 Phospho-4E-BP1 (Thr37/46) (236B4) Rabbit mAb (PE Conjugate)
- #9459 Phospho-4E-BP1 (Thr37/46) Antibody
- #9456 Phospho-4E-BP1 (Ser65) (174A9) Rabbit mAb
- #9451 Phospho-4E-BP1 (Ser65) Antibody
- #9455 Phospho-4E-BP1 (Thr70) Antibody
- #4923 Non-phospho-4E-BP1 (Thr46) (87D12) Rabbit mAb
- #9644 4E-BP1 (53H11) Rabbit mAb
- New** #8594 4E-BP1 (53H11) Rabbit mAb (Biotinylated)
- #9452 4E-BP1 Antibody
- #2845 4E-BP2 Antibody
- #6916 4EHP (D54C2) Rabbit mAb
- #2297 4E-T Antibody
- XP** #5053 Argonaute 1 (D84G10) XP® Rabbit mAb
- #9388 Argonaute 1 Antibody
- #2897 Argonaute 2 (C34C6) Rabbit mAb
- #6913 Argonaute 4 (D10F10) Rabbit mAb
- #4274 ATP2A1/SERCA1 (A988) Antibody
- #4219 ATP2A1/SERCA1 (L24) Antibody
- #4388 ATP2A2/SERCA2 Antibody
- #3177 BiP (C50B12) Rabbit mAb
- #3183 BiP Antibody
- #2119 BRF1/2 Antibody
- #3508 Brg1 (A52) Antibody
- #3514 Brg1 (P680) Antibody
- XP** #5864 CA12 (D75C6) XP® Rabbit mAb
- #5865 CA12 (D78E4) Rabbit mAb
- #2679 Calnexin (C5C9) Rabbit mAb
- #2433 Calnexin Antibody
- #3644 CDC73 (A264) Antibody
- #3645 CDC73 (D410) Antibody
- #5554 CHOP (D46F1) Rabbit mAb
- #2895 CHOP (L63F7) Mouse mAb
- #3256 CLK3 Antibody
- #2635 DDX3 Antibody
- #5555 DDX4 (2F9H5) Mouse mAb
- #8227 DDX4 Antibody
- New** #9877 DDX5 (D15E10) XP® Rabbit mAb
- XP** #4387 DDX5 Antibody
- New** #8988 DDX6/RCK (D26C11) Rabbit mAb



eIF4H (D85F2) XP® Rabbit mAb #3469: Confocal IF analysis of HeLa (left) and MCF7 (right) cells using #3469 (green). Actin filaments were labeled with DY-554 phalloidin (red). Blue pseudocolor = DRAQ5® #4084 (fluorescent DNA dye).

- #9407 DDX6/RCK Antibody
- New** #8897 Derlin-1 Antibody
- #6914 DGCR8 (D78E4) Rabbit mAb
- #5926 DHX29 (D19E10) Rabbit mAb
- #4648 DHX29 (E63) Antibody
- #4159 DHX29 Antibody
- #5362 Dicer (D38E7) Rabbit mAb
- #5325 Dicer (D5F2) Rabbit mAb
- #3363 Dicer Antibody
- #3364 Drosha (D28B1) Rabbit mAb
- #3410 Drosha (D30F3) Rabbit mAb
- #2548 EDC4/Ge-1 Antibody
- #3586 eEF1A (D10A5) Rabbit mAb
- #2551 eEF1A Antibody
- #2331 Phospho-eEF2 (Thr56) Antibody
- #2332 eEF2 Antibody
- #3691 Phospho-eEF2k (Ser366) Antibody
- #3692 eEF2k Antibody
- XP** #3398 Phospho-eIF2α (Ser51) (D9G8) XP® Rabbit mAb
- XP** #5199 Phospho-eIF2α (Ser51) (D9G8) XP® Rabbit mAb (Biotinylated)
- #3597 Phospho-eIF2α (Ser51) (119A11) Rabbit mAb
- #9721 Phospho-eIF2α (Ser51) Antibody
- XP** #5324 eIF2α (D7D3) XP® Rabbit mAb
- #9722 eIF2α Antibody
- #2103 eIF2α (L57A5) Mouse mAb
- #3595 eIF2B-ε Antibody
- XP** #3411 eIF3A (D51F4) XP® Rabbit mAb
- #2538 eIF3A Antibody
- #2068 eIF3C Antibody
- XP** #3413 eIF3H (D9C1) XP® Rabbit mAb
- #3261 eIF3j Antibody
- #2013 eIF4A (C32B4) Rabbit mAb
- #2425 eIF4A (F52) Antibody
- #2490 eIF4A1 Antibody
- #5399 Phospho-eIF4B (Ser406) Antibody
- #3591 Phospho-eIF4B (Ser422) Antibody
- #3592 eIF4B Antibody
- #9741 Phospho-eIF4E (Ser209) Antibody
- #9742 eIF4E Antibody
- #2067 eIF4E (C46H6) Rabbit mAb
- #2441 Phospho-eIF4G (Ser1108) Antibody
- #2469 eIF4G (C45A4) Rabbit mAb
- #2617 eIF4G (C65H5) Rabbit mAb
- #2498 eIF4G Antibody
- #2858 eIF4G1 Antibody
- XP** #5169 eIF4G2/p97 (D88B6) XP® Rabbit mAb



FMRP (D14F4) Rabbit mAb #7104: Confocal IF analysis of C2C12 cells, untreated (left) or treated with MG132 (10 µg/mL, 3 hrs; right), using #7104 (green). Actin filaments were labeled with DY-554 phalloidin (red). Blue pseudocolor = DRAQ5® #4084 (fluorescent DNA dye).

#3468 eIF4G2/p97 (D1A10) Rabbit mAb

XP #3469 eIF4H (D85F2) XP® Rabbit mAb

#2444 eIF4H Antibody

#2480 eIF5 Antibody

XP #3833 eIF6 (D16E9) XP® Rabbit mAb

#3263 eIF6 Antibody

#3264 Ero1-La Antibody

#4426 FIH (D19B3) Rabbit mAb

#3697 FLCN (D14G9) Rabbit mAb

New #7104 FMRP (D14F4) Rabbit mAb

#4524 FMRP (G468) Antibody

#4317 FMRP Antibody

#4264 FXR1 (L662) Antibody

#4173 FXR1 Antibody

New #7098 FXR2 (D85D6) Rabbit mAb

#4247 FXR2 Antibody

#3274 GβL (86B8) Rabbit mAb

#6938 GβL (86B8) Rabbit mAb (Magnetic Bead Conjugate)

#5837 GβL (86B8) Rabbit mAb (Sepharose Bead Conjugate)

#3227 GβL Antibody

#3302 GCN2 Antibody

XP #3593 Grp75 (D13H4) XP® Rabbit mAb

#2816 Grp75 Antibody

#2104 Grp94 Antibody

#3434 Hydroxy-HIF-1α (Pro564) (D43B5) XP® Rabbit mAb

#3716 HIF-1α Antibody

XP #5537 HIF-1β/ARNT (D28F3) XP® Rabbit mAb

#3414 HIF-1β/ARNT (C15A11) Rabbit mAb

#3718 HIF-1β/ARNT Antibody

New #7096 HIF-2α (D9E3) Rabbit mAb

#5091 HIPK2 Antibody

XP #5545 hnRNP A0 (D8A3) XP® Rabbit mAb

#5600 hnRNP A0 (D26A2) Rabbit mAb

#4046 hnRNP A0 Antibody

#8443 hnRNP A1 (D21H11) Rabbit mAb

#4296 hnRNP A1 (K350) Antibody

#5380 hnRNP A1 (R196) Antibody

#4699 hnRNP K (A222) Antibody

#4675 hnRNP K (R332) Antibody

#4783 hnRNP LL Antibody

New #8588 hnRNP Q/R (D18B2) Rabbit mAb

#5351 hnRNP Q/R Antibody

#2852 IMP1 Antibody

#3294 IRE1α (14C10) Rabbit mAb

#5681 IWS1 Antibody

#7705 KEAP1 (D1G10) Rabbit mAb

#8047 KEAP1 (D6B12) Rabbit mAb

#4617 KEAP1 (H436) Antibody

#4678 KEAP1 (P586) Antibody

#5398 KHSRP Antibody

#5034 La Antigen (D19B3) Rabbit mAb

#2081 La Antigen Antibody

New #8975 LAMTOR1/C11orf59 (D11H6) XP® Rabbit mAb

XP

New #8145 LAMTOR2/ROBLD3 (D7C10) Rabbit mAb

New #8168 LAMTOR3/MAPKSP1 (D38G5) Rabbit mAb

#5341 LysRS Antibody

#2157 MBTPS2 Antibody

#2111 Phospho-Mnk1 (Thr197/202) Antibody

#2195 Mnk1 (C4C1) Rabbit mAb

XP #2066 MRPL11 (D68F2) XP® Rabbit mAb

#2199 MRPL11 Antibody

XP #5536 Phospho-mTOR (Ser2448) (D9C2) XP® Rabbit mAb

#2976 Phospho-mTOR (Ser2448) (49F9) Rabbit mAb (IHC Specific)

#2971 Phospho-mTOR (Ser2448) Antibody

#2974 Phospho-mTOR (Ser2481) Antibody

#2983 mTOR (7C10) Rabbit mAb

#5043 mTOR (7C10) Rabbit mAb (Alexa Fluor® 488 Conjugate)

#5048 mTOR (7C10) Rabbit mAb (Alexa Fluor® 647 Conjugate)

#2972 mTOR Antibody

#4517 mTOR (L27D4) Mouse mAb

#5353 NME1/NDKA (D14H1) Rabbit mAb

#5389 NME1/NDKA (D18F10) Rabbit mAb

#3345 NME1/NDKA (D98) Antibody

#3338 NME1/NDKA (G19) Antibody

New #8882 NRF2 (D1C9) Rabbit mAb

#2940 p58IPK (C56E7) Rabbit mAb

#9208 Phospho-p70 S6 Kinase (Ser371) Antibody

#9234 Phospho-p70 S6 Kinase (Thr389) (108D2) Rabbit mAb

#9205 Phospho-p70 S6 Kinase (Thr389) Antibody

#9206 Phospho-p70 S6 Kinase (Thr389) (1A5) Mouse mAb

#9209 Phospho-Drosophila p70 S6 Kinase (Thr398) Antibody

#9204 Phospho-p70 S6 Kinase (Thr421/Ser424) Antibody

#2708 p70 S6 Kinase (49D7) Rabbit mAb

#5707 p70 S6 Kinase (49D7) Rabbit mAb (Biotinylated)

#9202 p70 S6 Kinase Antibody

#9430 PhosphoPlus® p70 S6 Kinase (Thr389, Thr421/Ser424) Antibody Kit

#3505 Asymmetric-Methyl-PABP1 (Arg455/Arg460) (C60A10) Rabbit mAb

#4992 PABP1 Antibody

#4422 Paip2A Antibody

#3894 PARN (A42) Antibody

#3899 PARN (P620) Antibody

XP #9535 PDCD4 (D29C6) XP® Rabbit mAb

#3179 Phospho-PERK (Thr980) (16F8) Rabbit mAb

#3192 PERK (C33E10) Rabbit mAb

#5683 PERK (D11A8) Rabbit mAb

#4835 PHD-2/Egln1 (D31E11) Rabbit mAb

#3293 PHD-2/Egln1 Antibody

#2766 PKR (N216) Antibody

#3072 PKR Antibody

#3804 Phospho-PPIG (Ser376) Antibody

#3803 PPIG Antibody

#5936 Phospho-PRAS40 (Ser183) Antibody

#2997 Phospho-PRAS40 (Thr246) (C77D7) Rabbit mAb

#2640 Phospho-PRAS40 (Thr246) Antibody

XP #2691 PRAS40 (D23C7) XP® Rabbit mAb

#2610 PRAS40 Antibody

New #8577 PRP4K (D27A1) Rabbit mAb

#4716 RACK1 Antibody

#4357 RagA (D8B5) Rabbit mAb

#3830 RagB Antibody

XP #5466 RagC (D31G9) XP® Rabbit mAb

#9480 RagC (D8H5) Rabbit mAb

#3360 RagC Antibody

#4470 RagD Antibody

#2083 Phospho-Raptor (Ser792) Antibody

#2280 Raptor (24C12) Rabbit mAb

#5382 Raptor (24C12) Rabbit mAb (Sepharose Bead Conjugate)

#6960 RCAS1 Antibody

#4935 Rheb Antibody

#2415 Ribosomal Protein L7a (E109) Antibody

#2403 Ribosomal Protein L7a (R225) Antibody

#2765 Ribosomal Protein L13a Antibody

#5400 Ribosomal Protein L26 (D8F6) Rabbit mAb

#2065 Ribosomal Protein L26 Antibody

XP #9538 Ribosomal Protein S3 (D50G7) XP® Rabbit mAb

#2579 Ribosomal Protein S3 Antibody

#3806 Phospho-Rictor (Thr1135) (D30A3) Rabbit mAb

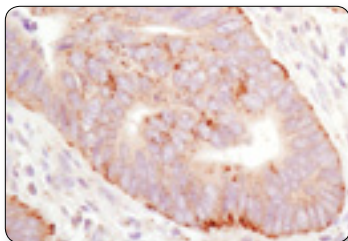
#2114 Rictor (53A2) Rabbit mAb

#9476 Rictor (D16H9) Rabbit mAb

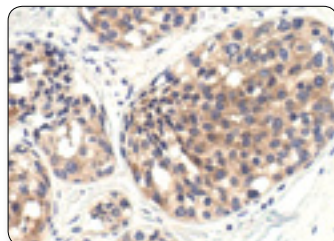
#5379 Rictor (D16H9) Rabbit mAb (Sepharose Bead Conjugate)

#2140 Rictor Antibody

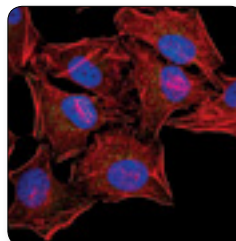
#5844 RMP Antibody



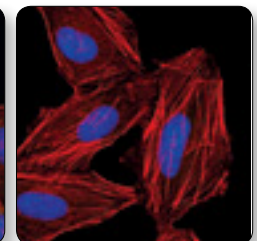
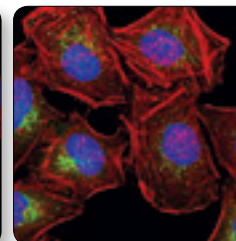
LAMTOR1/C11orf59 (D11H6) XP® Rabbit mAb #8975: IHC analysis of paraffin-embedded human colon carcinoma using #8975.



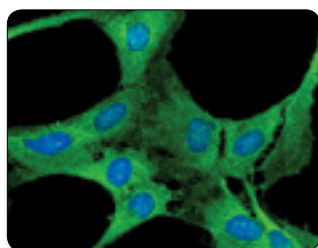
mTOR (7C10) Rabbit mAb #2983: IHC analysis of paraffin-embedded human breast carcinoma, showing cytoplasmic localization using #2983.



Phospho-mTOR (Ser2448) (D9C2) XP® Rabbit mAb #5536: Confocal IF analysis of HeLa cells treated with Rapamycin #9904 (10 μM, 2 hr; left), insulin (150 nM, 6 min; middle) or insulin- and λ-phosphatase (right), using #5536 (green). Actin filaments were labeled with DY-554 phalloidin. Blue pseudocolor = DRAQ5® #4084 (fluorescent DNA dye).



#4735 Phospho-Rpb1 CTD (Ser2/5) Antibody
#2629 Rpb1 CTD (4H8) Mouse mAb
XP #4858 Phospho-S6 Ribosomal Protein (Ser235/236) (D57.2.2E) XP [®] Rabbit mAb
XP #4803 Phospho-S6 Ribosomal Protein (Ser235/236) (D57.2.2E) XP [®] Rabbit mAb (Alexa Fluor [®] 488 Conjugate)
XP #3985 Phospho-S6 Ribosomal Protein (Ser235/236) (D57.2.2E) XP [®] Rabbit mAb (Alexa Fluor [®] 555 Conjugate)
New XP #9865 Phospho-S6 Ribosomal Protein (Ser235/236) (D57.2.2E) XP [®] Rabbit mAb (Alexa Fluor [®] 594 Conjugate)
XP #4851 Phospho-S6 Ribosomal Protein (Ser235/236) (D57.2.2E) XP [®] Rabbit mAb (Alexa Fluor [®] 647 Conjugate)
XP #3945 Phospho-S6 Ribosomal Protein (Ser235/236) (D57.2.2E) XP [®] Rabbit mAb (Biotinylated)
XP #5316 Phospho-S6 Ribosomal Protein (Ser235/236) (D57.2.2E) XP [®] Rabbit mAb (PE Conjugate)
#4856 Phospho-S6 Ribosomal Protein (Ser235/236) (2F9) Rabbit mAb
#4854 Phospho-S6 Ribosomal Protein (Ser235/236) (2F9) Rabbit mAb (Alexa Fluor [®] 488 Conjugate)
#4857 Phospho-S6 Ribosomal Protein (Ser235/236) (91B2) Rabbit mAb
#2211 Phospho-S6 Ribosomal Protein (Ser235/236) Antibody
XP #5364 Phospho-S6 Ribosomal Protein (Ser240/244) (D68F8) XP [®] Rabbit mAb
XP #5018 Phospho-S6 Ribosomal Protein (Ser240/244) (D68F8) XP [®] Rabbit mAb (Alexa Fluor [®] 488 Conjugate)
XP #5044 Phospho-S6 Ribosomal Protein (Ser240/244) (D68F8) XP [®] Rabbit mAb (Alexa Fluor [®] 647 Conjugate)
#4278 Phospho-S6 Ribosomal Protein (Ser240/244) (G1H9) Rabbit mAb (Biotinylated)
#2215 Phospho-S6 Ribosomal Protein (Ser240/244) Antibody
#2217 S6 Ribosomal Protein (5G10) Rabbit mAb
#2317 S6 Ribosomal Protein (54D2) Mouse mAb
#5317 S6 Ribosomal Protein (54D2) Mouse mAb (Alexa Fluor [®] 488 Conjugate)
#6989 S6 Ribosomal Protein (54D2) Mouse mAb (Alexa Fluor [®] 555 Conjugate)
#5548 S6 Ribosomal Protein (54D2) Mouse mAb (Alexa Fluor [®] 647 Conjugate)
#3944 S6 Ribosomal Protein (54D2) Mouse mAb (Biotinylated)
XP #5439 SKAR α/β (D65E8) XP [®] Rabbit mAb
#3794 SKAR α/β Antibody
#3235 SKAR Antibody

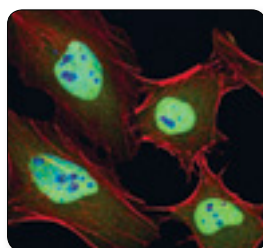


Ribosomal Protein S3 (D50G7) XP[®] Rabbit mAb #9538: Confocal IF analysis of C6 cells using #9538 (green). Blue pseudocolor = DRAQ5[®] #4084 (fluorescent DNA dye).

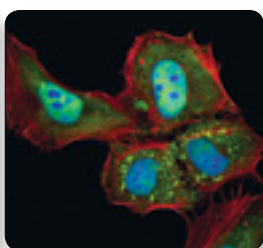
#8025 SQSTM1/p62 (D5E2) Rabbit mAb
#5114 SQSTM1/p62 Antibody
#4562 TFII-I Antibody
#4052 THEX1 (D2B4) Rabbit mAb
#4055 THEX1 (D66A11) Rabbit mAb
#4049 THEX1 Antibody
XP #8509 TIAR (D32D3) XP [®] Rabbit mAb
#8611 TIAR (D26E4) Rabbit mAb
#5137 TIAR Antibody
#6935 Hamartin/TSC1 (D43E2) Rabbit mAb
#4963 Hamartin/TSC1 (1B2) Mouse mAb
#4906 Hamartin/TSC1 Antibody
#3615 Phospho-Tuberin/TSC2 (Ser939) Antibody
#3616 Phospho-Tuberin/TSC2 (Ser1254) Antibody
#5584 Phospho-Tuberin/TSC2 (Ser1387) Antibody
#3617 Phospho-Tuberin/TSC2 (Thr1462) (5B12) Rabbit mAb
#3611 Phospho-Tuberin/TSC2 (Thr1462) Antibody
#3614 Phospho-Tuberin/TSC2 (Tyr1571) Antibody
#3635 Tuberin/TSC2 (28A7) Rabbit mAb
#3612 Tuberin/TSC2 Antibody
#9435 Upf1 Antibody
New #8092 Upf2 (D4A7) Rabbit mAb
#2900 Phospho-YB1 (Ser102) (C34A2) Rabbit mAb
#4202 YB1 (D299) Antibody
#2185 YY1 (13G10) Rabbit mAb
#2014 ZPR1 (LG1) Mouse mAb

PathScan[®] Sandwich ELISA

#7239 PathScan [®] Cell Growth Multi-Target Sandwich ELISA Kit
#7216 PathScan [®] Phospho-4E-BP1 (Thr37/Thr46) Sandwich ELISA Kit
#7854 PathScan [®] Phospho-4E-BP1 (Thr37/Thr46) Sandwich ELISA Antibody Pair
#7179 PathScan [®] Total 4E-BP1 Sandwich ELISA Kit
#7952 PathScan [®] Total eIF2 α Sandwich ELISA Kit
#7938 PathScan [®] Phospho-eIF4E (Ser209) Sandwich ELISA Kit
#7940 PathScan [®] Total eIF4E Sandwich ELISA Kit
#7976 PathScan [®] Phospho-mTOR (Ser2448) Sandwich ELISA Kit
New #7978 PathScan [®] Phospho-mTOR (Ser2481) Sandwich ELISA Kit
#7974 PathScan [®] Total mTOR Sandwich ELISA Kit
#7153 PathScan [®] Phospho-p70 S6 Kinase (Thr389) Chemiluminescent Sandwich ELISA Kit
#7053 PathScan [®] Phospho-p70 S6 Kinase (Thr389) Sandwich ELISA Antibody Pair



TIAR (D32D3) XP[®] Rabbit mAb #8509: Confocal IF analysis of HeLa cells, untreated (left) or UV-treated (right), using #8509 (green). Actin filaments were labeled with DY-554 phalloidin (red). Blue pseudocolor = DRAQ5[®] #4084 (fluorescent DNA dye).



#7038 PathScan [®] Total p70 S6 Kinase Sandwich ELISA Kit
#7039 PathScan [®] Total p70 S6 Kinase Sandwich ELISA Antibody Pair
#7205 PathScan [®] Phospho-S6 Ribosomal Protein (Ser235/236) Sandwich ELISA Kit
New #7316 PathScan [®] Phospho-S6 Ribosomal Protein (Ser235/236) Chemiluminescent Sandwich ELISA Kit
#7225 PathScan [®] Total S6 Ribosomal Protein Sandwich ELISA Kit
New #7337 PathScan [®] Total S6 Ribosomal Protein Chemiluminescent Sandwich ELISA Kit

SignalSilence[®] siRNA

New #6414 SignalSilence [®] 4E-BP1 siRNA I
#6392 SignalSilence [®] 4E-BP1 siRNA I (Mouse Specific)
#6393 SignalSilence [®] 4E-BP1 siRNA II (Mouse Specific)
#6576 SignalSilence [®] Dicer siRNA I
#6585 SignalSilence [®] Dicer siRNA II
New #8626 SignalSilence [®] DDX5 siRNA I
New #8627 SignalSilence [®] DDX5 siRNA II
#6311 SignalSilence [®] eIF4E siRNA I
#6424 SignalSilence [®] eIF4E siRNA I (Mouse Specific)
#6554 SignalSilence [®] eIF4E siRNA II
#6429 SignalSilence [®] eIF4E siRNA II (Mouse Specific)
#6503 SignalSilence [®] hnRNP A0 siRNA I
New #7668 SignalSilence [®] hnRNP A1 siRNA I
New #9825 SignalSilence [®] hnRNP LL siRNA I (Mouse Specific)
New #9826 SignalSilence [®] hnRNP LL siRNA II (Mouse Specific)
#5285 SignalSilence [®] KEAP1 siRNA I
#5289 SignalSilence [®] KEAP1 siRNA II
#6381 SignalSilence [®] mTOR siRNA I
#6332 SignalSilence [®] mTOR siRNA I (Mouse Specific)
#6556 SignalSilence [®] mTOR siRNA II
#6342 SignalSilence [®] mTOR siRNA II (Mouse Specific)
#6566 SignalSilence [®] p70/85 S6 Kinase siRNA I
#6572 SignalSilence [®] p70/85 S6 Kinase siRNA II
#6463 SignalSilence [®] RCAS1 siRNA I
#6496 SignalSilence [®] RCAS1 siRNA II
New #8649 SignalSilence [®] Rictor siRNA I
New #8622 SignalSilence [®] Rictor siRNA II
#6464 SignalSilence [®] RMP siRNA I
#6495 SignalSilence [®] RMP siRNA II
#6476 SignalSilence [®] Tuberin/TSC2 siRNA I
#6548 SignalSilence [®] Tuberin/TSC2 siRNA II

Controls

#1052 Phospho-4E-BP1 (Thr37/46) Blocking Peptide
#1053 4E-BP1 Blocking Peptide
#1084 BiP Blocking Peptide
#1221 Phospho-eIF2 α (Ser51) Blocking Peptide
#1230 Phospho-mTOR (Ser2448) Blocking Peptide
#1072 mTOR Blocking Peptide
#9203 p70 S6 Kinase Control Cell Extracts
#1205 p70 S6 Kinase Blocking Peptide
#1220 Phospho-S6 Ribosomal Protein (Ser235/236) Blocking Peptide
#1155 S6 Ribosomal Protein Blocking Peptide

Chemical Modulators

#9904 Rapamycin (FRAP/mTOR Inhibitor)

USA Headquarters

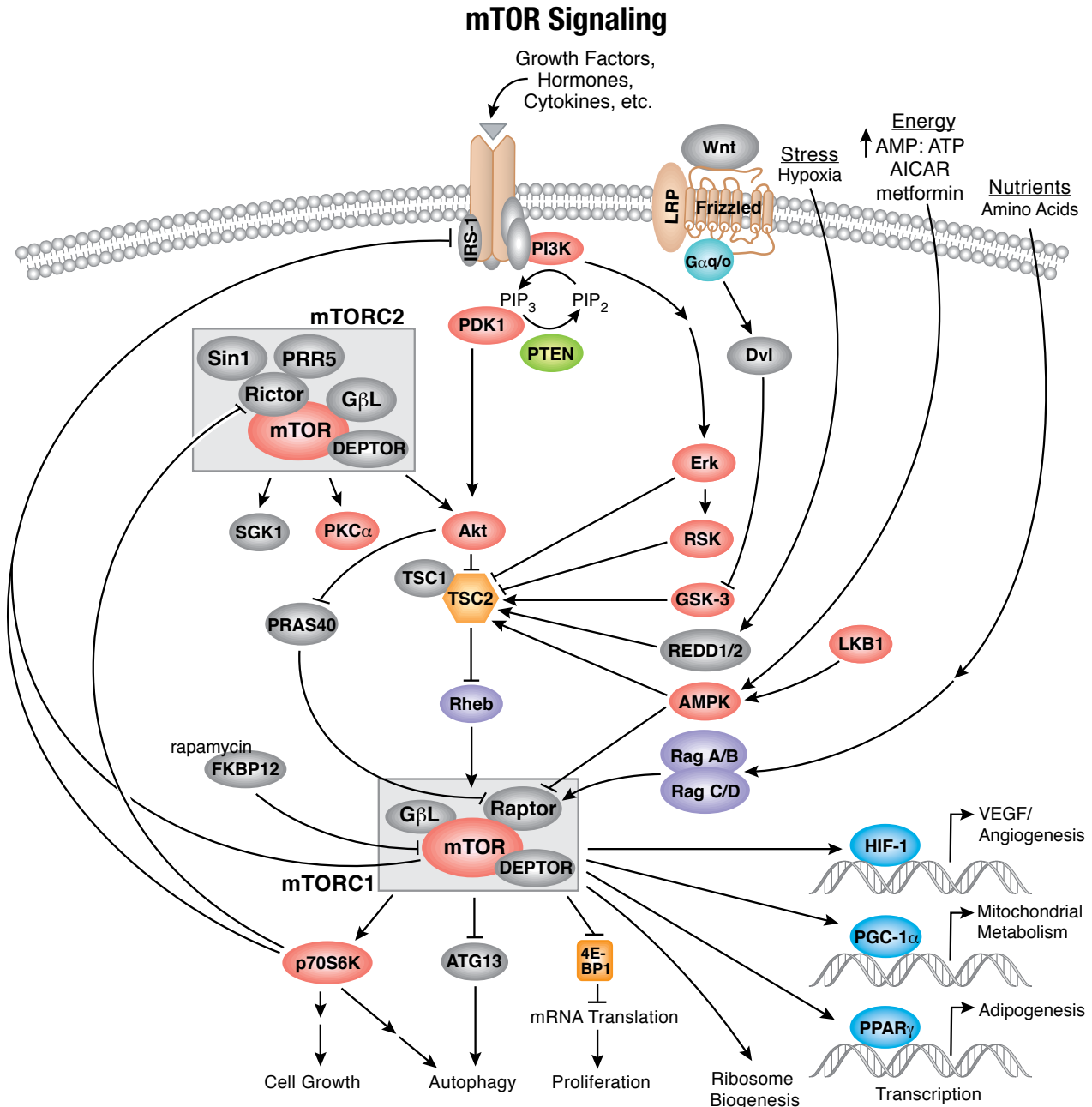
Cell Signaling Technology, Inc.
Tel: 978-867-2300
E-mail: info@cellsignal.com
www.cellsignal.com

International Subsidiaries

Cell Signaling Technology (China) Limited
Tel: (86) 21-5835-6288
E-mail: info@cst-c.com.cn
www.cellsignal.com

Cell Signaling Technology Europe
Tel: +31 (0)71 568 1060
E-mail: info@cellsignal.eu
www.cellsignal.com

Cell Signaling Technology Japan, K.K.
Tel: 03-3295-16300
E-mail: info@cstj.co.jp
www.cstj.co.jp



© 2008 – 2010 Cell Signaling Technology, Inc.