

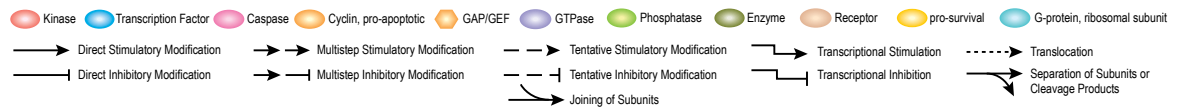
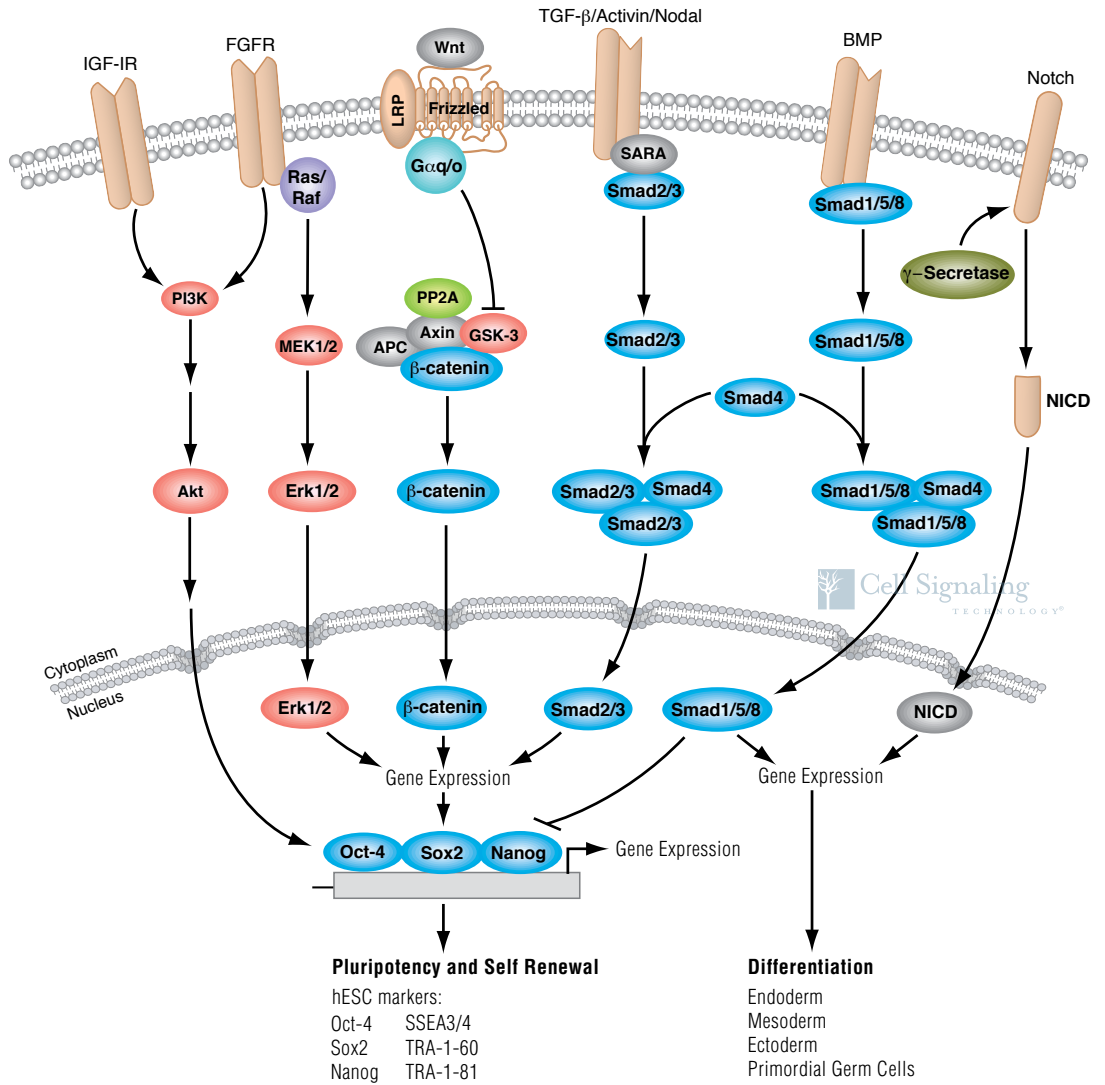
Antibodies and Related Reagents for Stem Cell and Lineage Markers

Product Pathways

- Motif Antibodies
- Chromatin Regulation
- MAP Kinase Signaling
- Apoptosis and Autophagy
- PI3K / Akt Signaling
- Cellular Metabolism
- Translational Control
- Development and Differentiation
- > **Stem Cell and Lineage Markers**
- Ca²⁺, cAMP, and Lipid Signaling
- Cell Cycle/Checkpoint Control
- NF-κB Signaling
- Lymphocyte Signaling
- Neuroscience
- Tyrosine Kinases and Docking Proteins
- Angiogenesis
- Nuclear Receptors and Phosphatases
- Cytoskeletal Signaling
- Adhesion
- Protein Folding and Stability

For Research Use Only.
Not For Use In
Diagnostic Procedures.

hESC Pluripotency and Differentiation



Stem Cell and Lineage Markers

XP® An exceptional Performance™ XP® Monoclonal Antibody.
Please visit our website for full validation details.

StemLight™ Kits

- #9656 StemLight™ Pluripotency Antibody Kit
- #9092 StemLight™ iPS Cell Reprogramming Antibody Kit
- #9094 StemLight™ Pluripotency Surface Marker Antibody Kit
- #9093 StemLight™ Pluripotency Transcription Factor Antibody Kit

Embryonic Stem Cell Markers - Blastocyst

- #3195 E-Cadherin (24E10) Rabbit mAb
- #3199 E-Cadherin (24E10) Rabbit mAb (Alexa Fluor® 488 Conjugate)
- #4295 E-Cadherin (24E10) Rabbit mAb (Alexa Fluor® 555 Conjugate)
- #9835 E-Cadherin (24E10) Rabbit mAb (Alexa Fluor® 647 Conjugate)
- New** #7559 E-Cadherin (24E10) Rabbit mAb (PE Conjugate)
- #4065 E-Cadherin Antibody
- #5296 E-Cadherin (32A8) Mouse mAb
- #4193 Cripto (D81B12) Rabbit mAb (Human Specific)
- #2020 Cripto Antibody (Human Specific)
- #2818 Cripto Antibody (Mouse Specific)
- #2019 FoxD3 (D20A9) Rabbit mAb
- #3795 Frizzled5 Antibody
- #5269 HMG2 Antibody
- #3750 Integrin α6 Antibody
- #4706 Integrin β1 Antibody
- #4420 NAC1 Antibody (Human Preferred)
- #4183 NAC1 Antibody (Rodent Preferred)
- XP** #4903 Nanog (D73G4) XP® Rabbit mAb
- XP** #5232 Nanog (D73G4) XP® Rabbit mAb (ChIP Formulated)
- XP** #5448 Nanog (D73G4) XP® Rabbit mAb (Alexa Fluor® 647 Conjugate)
- #3580 Nanog Antibody
- New** #8600 Nanog Antibody (Mouse Specific)
- #4893 Nanog (1E6C4) Mouse mAb
- #4428 Oct-1 Antibody
- #2840 Oct-4A (C30A3) Rabbit mAb
- #5677 Oct-4A (C30A3C1) Rabbit mAb (ChIP Formulated)
- #5177 Oct-4A (C30A3) Rabbit mAb (Alexa Fluor® 488 Conjugate)
- New** #4439 Oct-4A (C30A3) Rabbit mAb (Alexa Fluor® 555 Conjugate)
- #5263 Oct-4A (C30A3) Rabbit mAb (Alexa Fluor® 647 Conjugate)
- #2890 Oct-4A (C52G3) Rabbit mAb
- #2788 Oct-4 (V241) Antibody
- #2750 Oct-4 Antibody
- #4286 Oct-4 (9B7) Mouse mAb
- #2820 Ring1A Antibody
- New** #8459 Sall4 (D16H12) Rabbit mAb
- New** #5850 Sall4 Antibody

- #3122 Smad2 (86F7) Rabbit mAb
- #3103 Smad2 (L16D3) Mouse mAb
- XP** #3579 Sox2 (D6D9) XP® Rabbit mAb
- XP** #5024 Sox2 (D6D9) XP® Rabbit mAb (ChIP Formulated)
- XP** #5049 Sox2 (D6D9) XP® Rabbit mAb (Alexa Fluor® 488 Conjugate)
- XP** #5179 Sox2 (D6D9) XP® Rabbit mAb (Alexa Fluor® 555 Conjugate)
- XP** #5067 Sox2 (D6D9) XP® Rabbit mAb (Alexa Fluor® 647 Conjugate)
- #3728 Sox2 (C70B1) Rabbit mAb (IHC Preferred)
- #2748 Sox2 Antibody
- #4900 Sox2 (L1D6A2) Mouse mAb
- #4195 Sox2 (L73B4) Mouse mAb
- #4744 SSEA1 (MC480) Mouse mAb
- #4755 SSEA4 (MC813) Mouse mAb
- #5835 SSEA4 (MC813) Mouse mAb (Alexa Fluor® 555 Conjugate)
- #5836 SSEA4 (MC813) Mouse mAb (Alexa Fluor® 647 Conjugate)
- #4904 Stat3 (79D7) Rabbit mAb
- #9132 Stat3 Antibody
- #9139 Stat3 (124H6) Mouse mAb
- XP** #3737 SUZ12 (D39F6) XP® Rabbit mAb
- #2883 TCF3 (D15G11) Rabbit mAb
- #4746 TRA-1-60(S) (TRA-1-60(S)) Mouse mAb
- #4745 TRA-1-81 (TRA-1-81) Mouse mAb
- New** #4747 TRA-2-54 (2J) Mouse mAb
- #3909 UTF1 Antibody

Induced Pluripotency (iPS)

- #4038 KLF4 Antibody
- New** #8641 LIN28A (D1A1A) XP® Rabbit mAb
- XP** #3695 LIN28A (D84C11) XP® Rabbit mAb
- New** #8706 LIN28A (D9F5) Rabbit mAb
- #3978 LIN28A (A177) Antibody
- #3979 LIN28A (P22) Antibody
- #5930 LIN28A (6D1F9) Mouse mAb
- #4196 LIN28B Antibody
- #5422 LIN28B Antibody (Mouse Preferred)
- XP** #5605 c-Myc (D84C12) XP® Rabbit mAb
- #9402 c-Myc Antibody
- XP** #4903 Nanog (D73G4) XP® Rabbit mAb
- XP** #5232 Nanog (D73G4) XP® Rabbit mAb (ChIP Formulated)
- XP** #5448 Nanog (D73G4) XP® Rabbit mAb (Alexa Fluor® 647 Conjugate)
- #3580 Nanog Antibody
- New** #8600 Nanog Antibody (Mouse Specific)

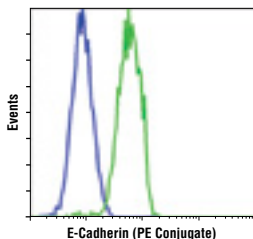
- #4893 Nanog (1E6C4) Mouse mAb
- #2840 Oct-4A (C30A3) Rabbit mAb
- #5677 Oct-4A (C30A3C1) Rabbit mAb (ChIP Formulated)
- #5177 Oct-4A (C30A3) Rabbit mAb (Alexa Fluor® 488 Conjugate)
- New** #4439 Oct-4A (C30A3) Rabbit mAb (Alexa Fluor® 555 Conjugate)
- #5263 Oct-4A (C30A3) Rabbit mAb (Alexa Fluor® 647 Conjugate)
- #2890 Oct-4A (C52G3) Rabbit mAb
- #2788 Oct-4 (V241) Antibody
- #2750 Oct-4 Antibody
- #4286 Oct-4 (9B7) Mouse mAb
- XP** #3579 Sox2 (D6D9) XP® Rabbit mAb
- XP** #5024 Sox2 (D6D9) XP® Rabbit mAb (ChIP Formulated)
- XP** #5049 Sox2 (D6D9) XP® Rabbit mAb (Alexa Fluor® 488 Conjugate)
- XP** #5179 Sox2 (D6D9) XP® Rabbit mAb (Alexa Fluor® 555 Conjugate)
- XP** #5067 Sox2 (D6D9) XP® Rabbit mAb (Alexa Fluor® 647 Conjugate)
- #3728 Sox2 (C70B1) Rabbit mAb (IHC Preferred)
- #2748 Sox2 Antibody
- #4900 Sox2 (L1D6A2) Mouse mAb
- #4195 Sox2 (L73B4) Mouse mAb

Embryonic Stem Cell Markers - Trophoctoderm

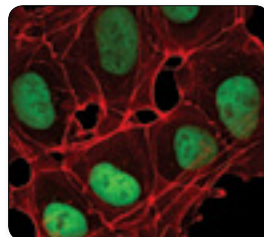
- #3977 Cdx2 Antibody
- #4540 EOMES Antibody

Primordial Germ Cell

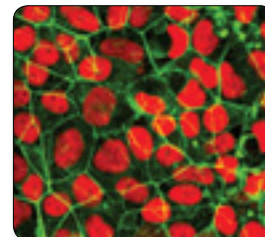
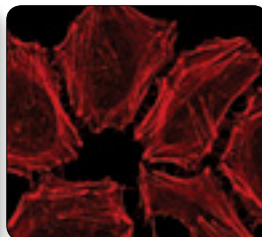
- #9115 Blimp-1/PRDI-BF1 (C14A4) Rabbit mAb
- #8042 DAZL Antibody
- #8227 DDX4 Antibody
- #5417 GCNF Antibody
- New** #5940 Mili (D14F5) XP® Rabbit mAb
- #2071 Mili Antibody
- New** #6915 Miwi (D92B7) XP® Rabbit mAb
- #2025 Miwi (D478) Antibody
- #2079 Miwi (G82) Antibody
- #2840 Oct-4A (C30A3) Rabbit mAb
- #5677 Oct-4A (C30A3C1) Rabbit mAb (ChIP Formulated)
- #5177 Oct-4A (C30A3) Rabbit mAb (Alexa Fluor® 488 Conjugate)
- New** #4439 Oct-4A (C30A3) Rabbit mAb (Alexa Fluor® 555 Conjugate)
- #5263 Oct-4A (C30A3) Rabbit mAb (Alexa Fluor® 647 Conjugate)
- #2890 Oct-4A (C52G3) Rabbit mAb
- #2788 Oct-4 (V241) Antibody
- #2750 Oct-4 Antibody
- #4286 Oct-4 (9B7) Mouse mAb
- #4744 SSEA1 (MC480) Mouse mAb
- #5868 TIF1β (4E1) Mouse mAb
- #3909 UTF1 Antibody



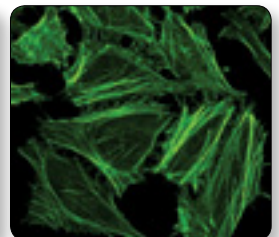
E-Cadherin (24E10) Rabbit mAb (PE Conjugate) #7559: Flow cytometric analysis of HeLa (blue) and MCF7 (green) cells using #7559.



Nanog (D73G4) XP® Rabbit mAb #4903: Confocal IF analysis of NTERA-2 cl.D1 (left) and HeLa (right) cells using #4903 (green). Actin filaments were labeled with DY-554 phalloidin (red).



Oct-4A (C30A3) Rabbit mAb (Alexa Fluor® 555 Conjugate) #4439: Confocal IF analysis of NTERA-2 cl.D1 (left) and HeLa (right) cells using #4439 (red). Actin filaments were labeled with Alexa Fluor® 488 phalloidin (green).



Neural Stem Cell

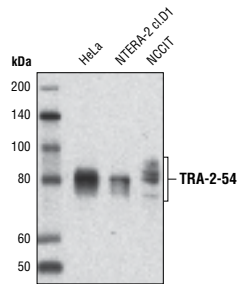
- #4477 ABCG2 Antibody
- #3508 Brg1 (A52) Antibody
- #3514 Brg1 (P680) Antibody
- New** #8773 Brn2/POU3F2 Antibody
- #4540 EOMES Antibody
- #2894 FGF Receptor 4 Antibody
- #3431 Id2 (D39E8) Rabbit mAb
- #2088 LEDGF (C57G11) Rabbit mAb
- #4787 Msx1 (G116) Antibody
- #5378 Msx1 (P5) Antibody
- XP** #5663 Musashi-1 (D46A8) XP[®] Rabbit mAb
- #2154 Musashi Antibody
- #4420 NAC1 Antibody (Human Preferred)
- #4183 NAC1 Antibody (Rodent Preferred)
- #4760 Nestin (Rat-401) Mouse mAb
- #2833 NeuroD Antibody
- #4201 p75NTR (D8A8) Rabbit mAb
- #2693 p75NTR Antibody
- #4194 Sox1 Antibody
- XP** #3579 Sox2 (D6D9) XP[®] Rabbit mAb
- XP** #5024 Sox2 (D6D9) XP[®] Rabbit mAb (ChIP Formulated)
- XP** #5049 Sox2 (D6D9) XP[®] Rabbit mAb (Alexa Fluor[®] 488 Conjugate)
- XP** #5179 Sox2 (D6D9) XP[®] Rabbit mAb (Alexa Fluor[®] 555 Conjugate)
- XP** #5067 Sox2 (D6D9) XP[®] Rabbit mAb (Alexa Fluor[®] 647 Conjugate)
- #3728 Sox2 (C70B1) Rabbit mAb (IHC Preferred)
- #2748 Sox2 Antibody
- #4900 Sox2 (L1D6A2) Mouse mAb
- #4195 Sox2 (L73B4) Mouse mAb
- XP** #5666 β 3-Tubulin (D65A4) XP[®] Rabbit mAb
- XP** #5568 β 3-Tubulin (D71G9) XP[®] Rabbit mAb
- #4466 β 3-Tubulin (TU-20) Mouse mAb
- #3390 Vimentin (5G3F10) Mouse mAb

Neural Crest

- #2019 FoxD3 (D20A9) Rabbit mAb
- #4600 Integrin α 4 Antibody
- #4787 Msx1 (G116) Antibody
- #5378 Msx1 (P5) Antibody
- #4147 Cleaved Notch1 (Val1744) (D3B8) Rabbit mAb
- #2421 Cleaved Notch1 (Val1744) Antibody
- XP** #3608 Notch1 (D1E11) XP[®] Rabbit mAb
- #3439 Notch1 (C37C7) Rabbit mAb
- #3268 Notch1 (C44H11) Rabbit mAb
- #3447 Notch1 (5B5) Rat mAb
- #2420 Notch2 (8A1) Rabbit mAb
- #4744 SSEA1 (MC480) Mouse mAb

Neurogenesis

- #3670 GFAP (GA5) Mouse mAb
- #3655 GFAP (GA5) Mouse mAb (Alexa Fluor[®] 488 Conjugate)
- #3656 GFAP (GA5) Mouse mAb (Alexa Fluor[®] 555 Conjugate)
- #3657 GFAP (GA5) Mouse mAb (Alexa Fluor[®] 647 Conjugate)
- #4542 MAP2 Antibody
- #2274 MELK Antibody
- #2837 Neurofilament-L (C28E10) Rabbit mAb
- #2835 Neurofilament-L (DA2) Mouse mAb
- #2838 Neurofilament-M (RMO 14.9) Mouse mAb
- #2792 Tyrosine Hydroxylase Antibody



TRA-2-54 (2J) Mouse mAb #4747: Western blot analysis of extracts from various cell lines using #4747.

Hematopoietic Stem Cell

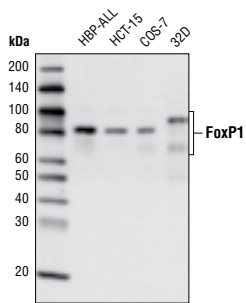
- #4477 ABCG2 Antibody
- XP** #4336 AML1 (D33G6) XP[®] Rabbit mAb
- #4334 AML1 Antibody
- #8229 AML1 Antibody (Mouse Preferred)
- #3569 CD34 (IC0115) Mouse mAb
- #4115 CD34 (IC0115) Mouse mAb
- #4540 EOMES Antibody
- XP** #4402 FoxP1 (D35D10) XP[®] Rabbit mAb
- XP** #4589 GATA-1 (D24E4) XP[®] Rabbit mAb
- XP** #3535 GATA-1 (D52H6) XP[®] Rabbit mAb
- #4591 GATA-1 Antibody
- #4595 GATA-2 Antibody
- XP** #5852 GATA-3 (D13C9) XP[®] Rabbit mAb
- #5849 GF11b (D3G2) Rabbit mAb
- XP** #3074 c-Kit (D13A2) XP[®] Rabbit mAb
- #3392 c-Kit Antibody
- #3308 c-Kit (Ab81) Mouse mAb
- #3310 c-Kit (Ab81) Mouse mAb (Alexa Fluor[®] 488 Conjugate)
- #3576 CD56 (NCAM) (123C3) Mouse mAb
- #3606 NCAM (CD56) Antibody
- #2258 PU.1 (9G7) Rabbit mAb
- #2216 PU.1 (9G7) Rabbit mAb (Alexa Fluor[®] 488 Conjugate)
- #2240 PU.1 (9G7) Rabbit mAb (Alexa Fluor[®] 647 Conjugate)
- #2266 PU.1 Antibody
- #2093 SCF (C19H6) Rabbit mAb
- #2273 SCF Antibody
- #5419 ZFX (L28B6) Mouse mAb

Hemangioblast

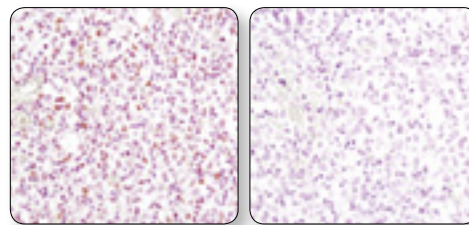
- XP** #4336 AML1 (D33G6) XP[®] Rabbit mAb
- #4334 AML1 Antibody
- #8229 AML1 Antibody (Mouse Preferred)
- #3569 CD34 (IC0115) Mouse mAb
- XP** #4589 GATA-1 (D24E4) XP[®] Rabbit mAb
- XP** #3535 GATA-1 (D52H6) XP[®] Rabbit mAb
- #4591 GATA-1 Antibody
- #2479 VEGF Receptor 2 (55B11) Rabbit mAb
- #2472 VEGF Receptor 2 Antibody

Angioblast

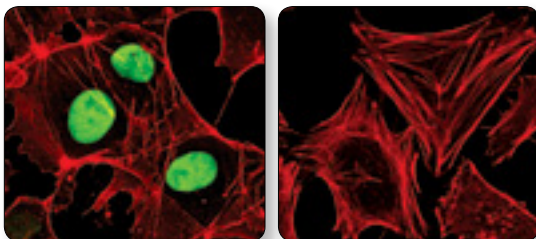
- XP** #2500 VE-Cadherin (D87F2) XP[®] Rabbit mAb
- #2158 VE-Cadherin Antibody
- #2479 VEGF Receptor 2 (55B11) Rabbit mAb
- #2472 VEGF Receptor 2 Antibody



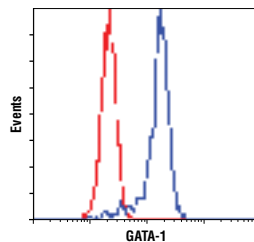
FoxP1 (D35D10) XP[®] Rabbit mAb #4402: Western blot analysis of extracts from various cell lines using #4402.



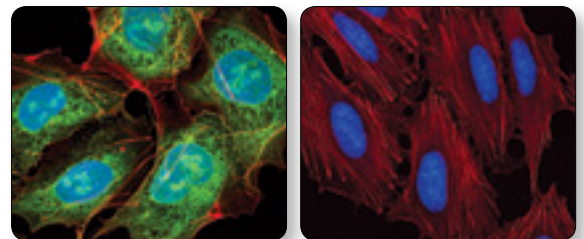
AML1 (D33G6) XP[®] Rabbit mAb #4336: IHC analysis of paraffin-embedded human non-Hodgkin's lymphoma using #4336 in the presence of control peptide (left) or antigen specific peptide (right).



Sox2 (D6D9) XP[®] Rabbit mAb #3579: Confocal IF analysis of NTERA-2 cl.D1 (left) and HeLa (right) cells using #3579 (green). Actin filaments were labeled with DY-554 phalloidin (red).



GATA-1 (D24E4) XP[®] Rabbit mAb #4589: Flow cytometric analysis of HeLa (red) and K-562 (blue) cells using #4589.



LIN28A (D1A1A) XP[®] Rabbit mAb #8641: Confocal IF analysis of NTERA-2 cl.D1 (left) and HeLa (right) cells using #8641 (green). Actin filaments were labeled with DY-554 phalloidin (red). Blue pseudocolor = DRAQ5[®] #4084 (fluorescent DNA dye).

USA Headquarters

Cell Signaling Technology, Inc.
Tel: 978-867-2300
E-mail: info@cellsignal.com
www.cellsignal.com

International Subsidiaries

Cell Signaling Technology (China) Limited
Tel: (86) 21-5835-6288
E-mail: info@cst-c.com.cn
www.cellsignal.com

Cell Signaling Technology Europe
Tel: +31 (0)71 568 1060
E-mail: info@cellsignal.eu
www.cellsignal.com

Cell Signaling Technology Japan, K.K.
Tel: 03-3295-16300
E-mail: info@cstj.co.jp
www.cstj.co.jp

Endothelial Cell

- XP** #2500 VE-Cadherin (D87F2) XP® Rabbit mAb
- #2158 VE-Cadherin Antibody
- #3568 CD31 (PECAM-1) (158-2B3) Mouse mAb
- #3528 CD31 (PECAM-1) (89C2) Mouse mAb
- #3290 Endoglin Antibody (Mouse Specific)
- #4706 Integrin β1 Antibody
- #4224 Tie2 (AB33) Mouse mAb

Mesenchymal Stem Cell

- #4335 Endoglin (D50G1) Rabbit mAb
- #3290 Endoglin Antibody (Mouse Specific)
- #3431 Id2 (D39E8) Rabbit mAb
- XP** #3074 c-Kit (D13A2) XP® Rabbit mAb
- #3392 c-Kit Antibody
- #3308 c-Kit (Ab81) Mouse mAb
- #3310 c-Kit (Ab81) Mouse mAb (Alexa Fluor® 488 Conjugate)
- #4787 Msx1 (G116) Antibody
- #5378 Msx1 (P5) Antibody
- #5444 NKX2.5 Antibody
- #5420 SPARC Antibody
- #4883 TAZ (V386) Antibody
- #2149 TAZ Antibody

Osteo- and Chondrogenesis

- New** #8486 RUNX2 (D1H7) Rabbit mAb
- #4442 OB-Cadherin (P707) Antibody

Adipogenesis

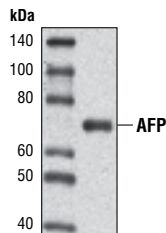
- #2789 Adiponectin (C45B10) Rabbit mAb
- #2295 C/EBPα Antibody
- #2843 C/EBPα (p42) Antibody
- #3087 C/EBPβ (LAP) Antibody
- #3082 C/EBPβ Antibody
- #2069 DLK1 Antibody
- #2120 FABP4 Antibody
- #2213 Glut4 (1F8) Mouse mAb
- #2443 PPARγ (81B8) Rabbit mAb
- #2435 PPARγ (C26H12) Rabbit mAb
- #2430 PPARγ (D69) Antibody

Myogenesis

- #4024 Desmin Antibody
- #3672 Myosin Light Chain 2 Antibody
- #4002 Troponin I Antibody

Endodermal Progenitor

- XP** #5851 GATA-6 (D61E4) XP® Rabbit mAb
- #4253 GATA-6 (A549) Antibody



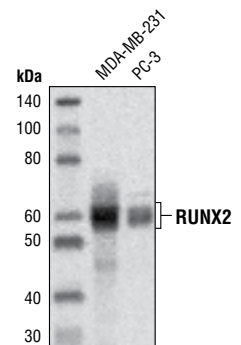
AFP (D12C1) Rabbit mAb #4448: Western blot analysis of extracts from Hep G2 cells using #4448.

Hepatogenesis

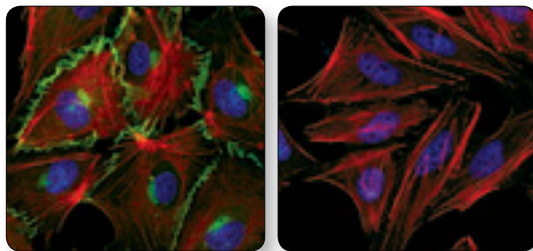
- New** #4448 AFP (D12C1) Rabbit mAb
- #2137 AFP Antibody
- #3903 AFP (3H8) Mouse mAb
- #4929 Albumin Antibody
- #3087 C/EBPβ (LAP) Antibody
- #3082 C/EBPβ Antibody
- #3180 Fatty Acid Synthase (C20G5) Rabbit mAb
- #3189 Fatty Acid Synthase Antibody
- #3886 Glycogen Synthase (15B1) Rabbit mAb
- #3893 Glycogen Synthase Antibody
- #3143 FoxA2/HNF3β Antibody
- #3113 HNF4α (C11F12) Rabbit mAb
- #3117 HNF4α (G162) Antibody
- #4706 Integrin β1 Antibody
- #4560 Met Antibody
- #3127 Met (25H2) Mouse mAb
- #3148 Met (L41G3) Mouse mAb

Pancreatic Cell

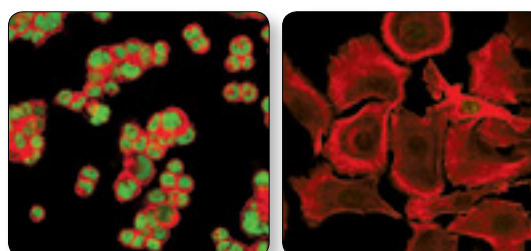
- #2760 Glucagon Antibody
- #3014 Insulin (C27C9) Rabbit mAb
- #4590 Insulin Antibody
- #4593 C-Peptide Antibody
- #2833 NeuroD Antibody
- XP** #5679 Pdx1 (D59H3) XP® Rabbit mAb
- #2437 Pdx1 Antibody



RUNX2 (D1H7) Rabbit mAb #8486: Western blot analysis of extracts from MDA-MB-231 and PC-3 cells using #8486.



VE-Cadherin (D87F2) XP® Rabbit mAb #2500: Confocal IF analysis of HUVEC (left) and HeLa (right) cells using #2500 (green). Actin filaments were labeled with DY-554 phalloidin (red). Blue pseudocolor = DRAQ5® #4084 (fluorescent DNA dye).



GATA-6 (D61E4) XP® Rabbit mAb #5851: Confocal IF analysis of KM12 (left) and SK-OV-3 (right) cells using #5851 (green). Actin filaments were labeled with DY-554 phalloidin (red).

Supporting Products

We offer a growing list of complementary products to support your research, such as epitope tag antibodies, isotype controls and secondary antibodies. Please see the supporting products section of our catalog at www.cellsignal.com/catalog/