

Antibodies and Related Reagents for Protein Folding and Stability

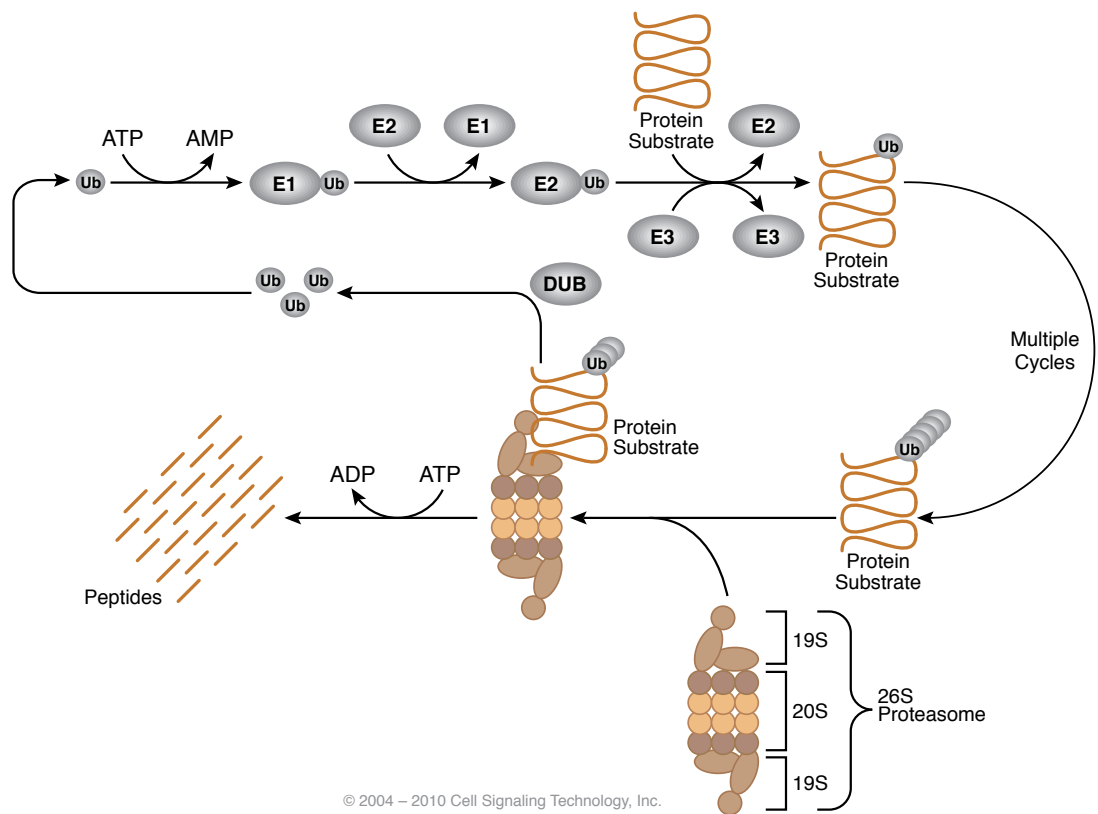
Product Pathways

- Motif Antibodies
- Chromatin Regulation
- MAP Kinase Signaling
- Apoptosis and Autophagy
- PI3K / Akt Signaling
- Cellular Metabolism
- Translational Control
- Development and Differentiation
- Stem Cell and Lineage Markers
- Ca²⁺, cAMP, and Lipid Signaling
- Cell Cycle/Checkpoint Control
- NF-κB Signaling
- Lymphocyte Signaling
- Neuroscience
- Tyrosine Kinases and Docking Proteins
- Angiogenesis
- Nuclear Receptors and Phosphatases
- Cytoskeletal Signaling
- Adhesion

> Protein Folding and Stability

For Research Use Only.
Not For Use In
Diagnostic Procedures.

Ubiquitin/Proteasome



Protein Folding

Antibody Sampler Kits

- #4759 ER Protein Folding Antibody Sampler Kit
- #9956 ER Stress Antibody Sampler Kit
- #9965 HSP/Chaperone Antibody Sampler Kit
- #4889 Protein Folding and Stability Antibody Sampler Kit
- #8357 Stress and Apoptosis Antibody Sampler Kit

Antibodies

- #9590 AMFR Antibody
- #3920 Bag1 (3.10G3E2) Mouse mAb
- #3177 BiP (C50B12) Rabbit mAb
- #3183 BiP Antibody
- #2679 Calnexin (C5C9) Rabbit mAb
- #2433 Calnexin Antibody
- #2891 Calreticulin Antibody
- #3561 CCT2 Antibody
- XP** #4793 CDC37 (D11A3) XP® Rabbit mAb
- #4222 CDC37 (D28H7) Rabbit mAb
- #3618 CDC37 (V297) Antibody
- #3604 CDC37 (V367) Antibody
- #2175 Cyclophilin A Antibody
- New** #8897 Derlin-1 Antibody
- #3264 Ero1-La Antibody
- XP** #3798 ERp44 (D17A6) XP® Rabbit mAb
- #2886 ERp44 Antibody
- #2887 ERp57 (A484) Antibody
- #2881 ERp57 (G117) Antibody
- XP** #5033 ERp72 (D70D12) XP® Rabbit mAb
- #2798 ERp72 Antibody
- #8245 FKBP5 Antibody
- #2816 Grp75 Antibody
- #2104 Grp94 Antibody
- #2723 Hip Antibody
- #8014 Hip (10B7-C3) Mouse mAb
- #5853 HO-1 (D60G11) Rabbit mAb
- XP** #5670 HOP (D10E2) XP® Rabbit mAb
- #5669 HOP (D6E3) Rabbit mAb
- #4464 Hop Antibody
- #4356 HSF1 Antibody
- #2404 Phospho-HSP27 (Ser15) Antibody
- #2405 Phospho-HSP27 (Ser78) Antibody
- #2401 Phospho-HSP27 (Ser82) Antibody
- #2406 Phospho-HSP27 (Ser82) Antibody II
- #2442 HSP27 Antibody (Rodent Preferred)
- #2402 HSP27 (G31) Mouse mAb
- #4871 HSP40 (C64B4) Rabbit mAb
- #4868 HSP40 Antibody
- #4870 HSP60 (D307) Antibody
- #4869 HSP60 (D85) Antibody
- #4876 HSP70 (D69) Antibody
- #4837 HSP70 (D69) Antibody (Alexa Fluor® 488 Conjugate)
- #4008 HSP70 (D69) Antibody (Alexa Fluor® 647 Conjugate)
- #4872 HSP70 Antibody
- #4873 HSP70 (6B3) Rat mAb
- #3488 Phospho-HSP90α (Thr5/7) Antibody
- #4877 HSP90 (C45G5) Rabbit mAb
- #4875 HSP90 (E289) Antibody
- #4874 HSP90 Antibody
- New** #7411 HSP90β (D3F2) Rabbit mAb
- #5087 HSP90β Antibody

- #3303 HSPA4/Apg-2 Antibody
- #8444 HSPA8 (D12F2) Rabbit mAb
- #3059 HSPB8/HSP22 Antibody
- #3294 IRE1α (14C10) Rabbit mAb
- #3501 PDI (C81H6) Rabbit mAb
- New** #5051 PDI (C81H6) Rabbit mAb (Alexa Fluor® 488 Conjugate)
- New** #8448 PDI (C81H6) Rabbit mAb (Alexa Fluor® 555 Conjugate)
- New** #8463 PDI (C81H6) Rabbit mAb (Alexa Fluor® 647 Conjugate)

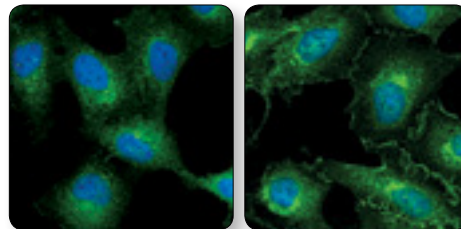
- #2446 PDI Antibody
- #6960 RCAS1 Antibody
- #5844 RMP Antibody
- #4775 Tid-1 (RS13) Mouse mAb

PathScan® Sandwich ELISA

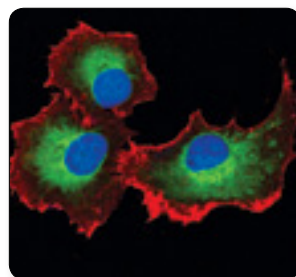
- #7290 PathScan® Phospho-HSP27 (Ser78) Sandwich ELISA Kit
- #7152 PathScan® Phospho-HSP27 (Ser82) Sandwich ELISA Kit
- #7295 PathScan® Total HSP27 Sandwich ELISA Kit

SignalSilence® siRNA

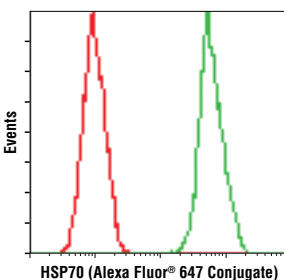
- New** #9824 SignalSilence® CAND1 siRNA I
- #6356 SignalSilence® HSP27 siRNA I
- #6463 SignalSilence® RCAS1 siRNA I
- #6496 SignalSilence® RCAS1 siRNA II



CDC37 (D11A3) XP® Rabbit mAb #4793: Confocal IF analysis of HeLa cells, serum-starved (left) or treated with hEGF #8916 (100 ng/mL, 5 min; right), using #4793 (green). Blue pseudocolor = DRAQ5® #4084 (fluorescent DNA dye).



ERp72 (D70D12) XP® Rabbit mAb #5033: Confocal IF analysis of PANC-1 cells using #5033 (green) and β-Actin (8H10D10) Mouse mAb #3700 (red). Blue pseudocolor = DRAQ5® #4084 (fluorescent DNA dye).



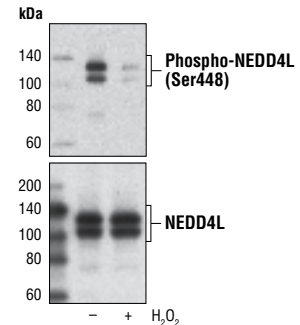
HSP70 (D69) Antibody (Alexa Fluor® 647 Conjugate) #4008: Flow cytometric analysis of HeLa cells using #4008 (green) compared to concentration-matched Rabbit (DA1E) mAb IgG XP® Isotype Control (Alexa Fluor® 647 Conjugate) #2985 (red).

Controls

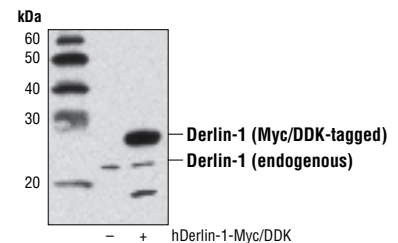
- #1084 BiP Blocking Peptide

Chemical Modulators

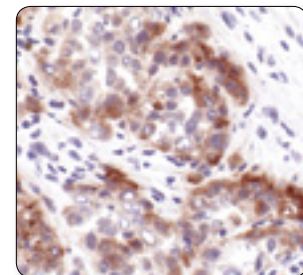
- #9843 Geldanamycin
- #9972 Brefeldin A



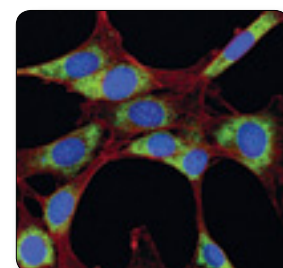
Phospho-NEDD4L (Ser448) Antibody #8063: Western blot analysis of extracts from SK-MEL-28 cells, untreated (-) or treated (+) with H₂O₂ (4 mM, 15 min), using #8063 (upper) or NEDD4L Antibody #4013 (lower).



Derlin-1 Antibody #8897: Western blot analysis of extracts from 293T cells, either mock transfected (-) or transfected with a Myc/DDK-tagged cDNA expression construct encoding full-length human Derlin-1 (hDerlin-1-Myc/DDK; +), using #8897.



Phospho-HSP27 (Ser82) Antibody #2401: IHC analysis of frozen H1650 xenograft, showing cytoplasmic localization using #2401.



PDI (C81H6) Rabbit mAb (Alexa Fluor® 488 Conjugate) #5051: Confocal IF analysis of NIH/3T3 cells using #5051 (green) and a β-Actin Mouse mAb (Alexa Fluor® 594 Conjugate) (red). Blue pseudocolor = DRAQ5® #4084 (fluorescent DNA dye).

Protein Stability

Antibody Sampler Kits

#8353 DUB Antibody Sampler Kit

Antibodies

- New** #9590 AMFR Antibody
- New** #9499 APC6 (D8D8) Rabbit mAb
- #3546 Arf6 Antibody
- #9373 Phospho-BAP1 (Ser592) Antibody
- #4394 β -TrCP (D13F10) Rabbit mAb
- New** #8225 CACYBP (D43G11) Rabbit mAb
- #2556 Calpain 1 Large Subunit (Mu-type) Antibody
- #2539 Calpain 2 Large Subunit (M-type) Antibody
- New** #7433 CAND1 Antibody
- #3373 Cathepsin B (G60) Antibody
- #3383 Cathepsin B (H190) Antibody (Mouse Preferred)
- #2284 Cathepsin D Antibody
- New** #8160 Cbl-b Antibody
- #3554 Phospho-c-Cbl (Tyr731) Antibody
- #3555 Phospho-c-Cbl (Tyr774) Antibody
- #2179 c-Cbl (C49H8) Rabbit mAb
- #8447 c-Cbl (D4E10) Rabbit mAb
- #2747 c-Cbl Antibody
- #8733 Phospho-CDC37 (Ser13) Antibody
- #4297 CHFR Antibody
- #2080 CHIP (C3B6) Rabbit mAb
- #6895 COPS5 Antibody
- #4995 CUL1 Antibody
- #2759 CUL3 Antibody
- #2699 CUL4A Antibody
- #4500 Phospho-CYLD (Ser418) Antibody
- New** #8462 CYLD (D1A10) Rabbit mAb
- #4495 CYLD Antibody
- #6998 DDB-1 (D4C8) Rabbit mAb
- #5428 DDB1 Antibody
- #5416 DDB2 (D4C4) Rabbit mAb
- New** #8897 Derlin-1 Antibody
- #3847 E2-25K/Hip2 Antibody
- XP** #4833 HAUSP (D17C6) XP[®] Rabbit mAb
- #3277 HAUSP Antibody
- New** #5695 HECTH9 (AX8D1) Mouse mAb
- #8226 HIP2 (D27C4) Rabbit mAb
- #4944 HR6A/HR6B Antibody
- #2758 ISG15 (22D2) Rabbit mAb
- #2743 ISG15 Antibody
- #7705 KEAP1 (D1G10) Rabbit mAb
- #8047 KEAP1 (D6B12) Rabbit mAb
- #4617 KEAP1 (H436) Antibody
- #4678 KEAP1 (P586) Antibody
- #4400 MIB1 Antibody
- #4022 MMP-2 Antibody
- XP** #3801 MMP-7 (D4H5) XP[®] Rabbit mAb
- #2270 MMP-9 (G657) Antibody
- #3852 MMP-9 Antibody

- New** #9891 NBR1 (D2E6) Rabbit mAb
- #3607 NEDD4 (C5F5) Rabbit mAb
- #5344 NEDD4 (D82F4) Rabbit mAb
- #2740 NEDD4 Antibody
- #4080 Phospho-NEDD4L (Ser342) Antibody
- New** #8063 Phospho-NEDD4L (Ser448) Antibody
- #4013 NEDD4L Antibody
- #2754 NEDD8 (19E3) Rabbit mAb
- #4044 HEF1/NEDD9 (2G9) Mouse mAb
- #4497 NIPA Antibody
- New** #8451 OTUB1 Antibody
- #2408 PA28 α Antibody
- #2409 PA28 β Antibody
- #2412 PA28 γ Antibody
- New** #8144 PDLIM2 Antibody
- #4392 PIAS4 (D2F12) Rabbit mAb
- #2426 PHB1 Antibody
- #2455 PSMA2 Antibody
- #2456 PSMA3 Antibody
- #2457 PSMA5 (K231) Antibody
- #2458 PSMA5 (T14) Antibody
- #2459 PSMA6 Antibody
- New** #7662 PSMD14 Antibody
- #8311 PTPN18 (D7B9) Rabbit mAb
- #3846 S5a/PSMD4 Antibody
- #4397 RBX1 Antibody
- #5754 RCHY1 Antibody
- #3433 RECK (D8C7) Rabbit mAb
- #5250 Renin Antibody
- #2820 Ring1A Antibody
- XP** #5591 SENP3 (D20A10) XP[®] Rabbit mAb
- #3349 SGTA Antibody
- #2156 Skp1 Antibody
- #4313 Skp2 (L70) Antibody
- #4358 Skp2 Antibody
- #2174 Smurf1 Antibody
- #2744 SPINK3 Antibody
- #8025 SQSTM1/p62 (D5E2) Rabbit mAb
- #5114 SQSTM1/p62 Antibody
- #5245 STAMBP Antibody
- #4940 SUMO-1 (C9H1) Rabbit mAb
- #4930 SUMO-1 Antibody
- #5718 SUMO-1 (2A12) Mouse mAb
- #4971 SUMO-2/3 (18H8) Rabbit mAb
- New** #8946 TIMP1 (D10E6) Rabbit mAb
- #5738 TIMP2 (D18B7) Rabbit mAb
- #5673 TIMP3 (D74B10) Rabbit mAb
- New** #8688 UBA2 (D15C11) Rabbit mAb
- #5293 UBA2 Antibody
- #4997 UBC3 Antibody
- #4996 UBC3B Antibody
- XP** #4786 Ubc9 (D26F2) XP[®] Rabbit mAb

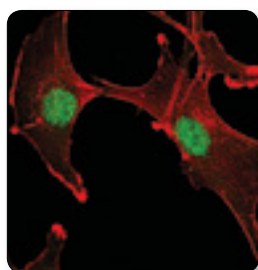
- #4918 Ubc9 Antibody
- #5641 Ubc12 (D13D7) Rabbit mAb
- #4913 Ubc12 Antibody
- #4919 Ubc13 Antibody
- #4330 UbcH5C (D60E2) Rabbit mAb
- #4890 UBE1a Antibody
- #4891 UBE1a/b Antibody
- #8721 UBE2L3 (D5G1) Rabbit mAb
- #3848 UBE2L3 Antibody
- #6999 UBE2N (D2A1) Rabbit mAb
- New** #7526 UBE3A (D10D3) Rabbit mAb
- #8081 K48-linkage Specific Polyubiquitin (D9D5) Rabbit mAb
- #4289 K48-linkage Specific Polyubiquitin Antibody
- #5621 K63-linkage Specific Polyubiquitin (D7A11) Rabbit mAb
- #3933 Ubiquitin Antibody
- #3936 Ubiquitin (P4D1) Mouse mAb
- #3524 UCHL1 Antibody
- New** #8141 UCHL3 (D25E6) Rabbit mAb
- #3525 UCHL3 Antibody
- #8033 USP1 (D37B4) Rabbit mAb
- #8036 USP2 Antibody
- #8728 USP8 Antibody
- #5751 USP9X Antibody
- New** #8501 USP10 (D7A5) Rabbit mAb
- #5553 USP10 Antibody
- New** #8159 USP14 Antibody
- #4813 USP18 (D4E7) Rabbit mAb
- #4217 USP28 Antibody
- #2649 VCP (7F3) Rabbit mAb
- #2648 VCP Antibody
- #2738 VHL Antibody

SignalSilence[®] siRNA

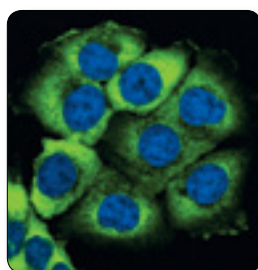
- #7279 SignalSilence[®] APC6 siRNA I
- #7164 SignalSilence[®] APC6 siRNA II
- New** #9824 SignalSilence[®] CAND1 siRNA I
- #5285 SignalSilence[®] KEAP1 siRNA I
- #5289 SignalSilence[®] KEAP1 siRNA II
- #6394 SignalSilence[®] SQSTM1/p62 siRNA I
- #6399 SignalSilence[®] SQSTM1/p62 siRNA II
- New** #7646 SignalSilence[®] UBA2 siRNA I
- New** #7642 SignalSilence[®] UBA2 siRNA II
- New** #7511 SignalSilence[®] UCHL3 siRNA I
- New** #7339 SignalSilence[®] UCHL3 siRNA II
- #6308 SignalSilence[®] USP9X siRNA I

Controls

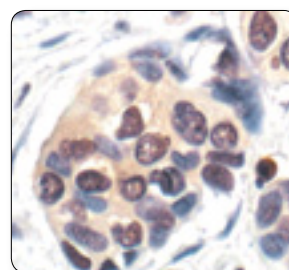
- #1048 NEDD8 Blocking Peptide



Ubc9 (D26F2) XP[®] Rabbit mAb #4786: Confocal IF analysis of A172 cells using #4786 (green). Actin filaments were labeled with DY-554 phalloidin (red).



USP10 (D7A5) Rabbit mAb #8501: Confocal IF analysis of HCT 116 cells using #8501 (green). Blue pseudocolor = DRAQ5[®] #4084 (fluorescent DNA dye).



Ubiquitin (P4D1) Mouse mAb #3936: IHC analysis of paraffin-embedded breast carcinoma showing nuclear and cytoplasmic ubiquitin localization using #3936.

USA Headquarters

Cell Signaling Technology, Inc.
Tel: 978-867-2300
E-mail: info@cellsignal.com
www.cellsignal.com

International Subsidiaries

Cell Signaling Technology (China) Limited
Tel: (86) 21-5835-6288
E-mail: info@cst-c.com.cn
www.cellsignal.com

Cell Signaling Technology Europe
Tel: +31 (0)71 568 1060
E-mail: info@cellsignal.eu
www.cellsignal.com

Cell Signaling Technology Japan, K.K.
Tel: 03-3295-16300
E-mail: info@cstj.co.jp
www.cstj.co.jp

Supporting Products

Antibody Sampler Kits

- #9962 Epitope Tag Antibody Sampler Kit
- #5142 Loading Control Antibody Sampler Kit
- #4670 Loading Control Antibody Sampler Kit (HRP Conjugate)

Secondary Antibodies and Detection Reagents

- #7071 Phototope®-HRP Western Blot Detection System, Anti-rabbit IgG, HRP-linked Antibody
- #7072 Phototope®-HRP Western Blot Detection System, Anti-mouse IgG, HRP-linked Antibody
- #4929 Albumin Antibody
- #5597 Anti-biotin (D5A7) Rabbit mAb
- #5571 Anti-biotin (D5A7) Rabbit mAb (HRP Conjugate)
- #7055 Anti-biotin, AP-linked Antibody
- #7075 Anti-biotin, HRP-linked Antibody
- New** #9863 Protein A Agarose Beads
- New** #8687 Protein A Magnetic Beads
- New** #8740 Protein G Magnetic Beads
- #7054 Anti-rabbit IgG, AP-linked Antibody
- #7074 Anti-rabbit IgG, HRP-linked Antibody
- #4412 Anti-rabbit IgG (H+L), F(ab)² Fragment (Alexa Fluor® 488 Conjugate)
- #4413 Anti-rabbit IgG (H+L), F(ab)² Fragment (Alexa Fluor® 555 Conjugate)
- #4414 Anti-rabbit IgG (H+L), F(ab)² Fragment (Alexa Fluor® 647 Conjugate)
- #6990 Anti-rabbit IgG F(ab)² Fragment (Sepharose Bead Conjugate)
- #5366 Anti-rabbit IgG (H+L) (DyLight® 680 Conjugate)
- #5151 Anti-rabbit IgG (H+L) (DyLight® 800 Conjugate)
- #3678 Mouse Anti-rabbit IgG (Conformation Specific) (L27A9) mAb
- New** #5127 Mouse Anti-rabbit IgG (Conformation Specific) (L27A9) mAb (HRP Conjugate)
- #3677 Mouse Anti-rabbit IgG (Light-Chain Specific) (L57A3) mAb
- #7056 Anti-mouse IgG, AP-linked Antibody
- #7076 Anti-mouse IgG, HRP-linked Antibody
- #4408 Anti-mouse IgG (H+L), F(ab)² Fragment (Alexa Fluor® 488 Conjugate)
- #4409 Anti-mouse IgG (H+L), F(ab)² Fragment (Alexa Fluor® 555 Conjugate)
- #4410 Anti-mouse IgG (H+L), F(ab)² Fragment (Alexa Fluor® 647 Conjugate)
- #5946 Anti-mouse IgG (H+L), F(ab)² Fragment (Sepharose Bead Conjugate)
- #5470 Anti-mouse IgG (H+L) (DyLight® 680 Conjugate)
- #5257 Anti-mouse IgG (H+L) (DyLight® 800 Conjugate)
- #7077 Anti-rat IgG, HRP-linked Antibody
- #4416 Anti-rat IgG (H+L), (Alexa Fluor® 488 Conjugate)
- #4417 Anti-rat IgG (H+L), (Alexa Fluor® 555 Conjugate)
- #4418 Anti-rat IgG (H+L), (Alexa Fluor® 647 Conjugate)
- #8125 SignalStain® Boost IHC Detection Reagent (HRP, Mouse)
- #8114 SignalStain® Boost IHC Detection Reagent (HRP, Rabbit)
- #8112 SignalStain® Antibody Diluent
- #3419 Streptavidin (Sepharose Bead Conjugate)
- #3999 Streptavidin-HRP

Buffers and Related Products

- #7003 20X LumiGLO® Reagent and 20X Peroxide
- #9998 BSA
- #9803 Cell Lysis Buffer (10X)
- #9852 Chaps Cell Extract Buffer (10X)
- New** #9871 20 mM Citrate pH 3.0 (Sterile)
- #4083 DAPI
- #4084 DRAQ5®
- New** #7406 DRAQ7™
- #4082 Hoechst #33342
- #5425 Normal Goat Serum
- #9999 Nonfat Dry Milk
- #7722 Blue Loading Buffer Pack
- #7723 Red Loading Buffer Pack
- New** #9872 Phosphate Buffered Saline (PBS-1X) pH7.2 (Sterile)
- #9808 Phosphate Buffered Saline (PBS-20X)
- #9809 Phosphate Buffered Saline with Tween 20 (PBST-20X)
- #5870 Phosphatase Inhibitor Cocktail (100X)
- #5871 Protease Inhibitor Cocktail (100X)
- #5872 Protease/Phosphatase Inhibitor Cocktail (100X)
- #7727 Biotinylated Protein Ladder Detection Pack
- #7720 Prestained Protein Marker, Broad Range (Premixed Format)
- #4087 Propidium Iodide (PI)/RNase Staining Solution
- #9806 RIPA Buffer (10X)
- #6883 SignalFire™ ECL Reagent
- #7002 STOP Solution
- #7004 TMB Substrate
- #4050 Tris-Glycine SDS Running Buffer (10X)
- #9997 Tris Buffered Saline with Tween 20 (TBST-10X)

Isotype Controls

- XP** #3900 Rabbit (DA1E) mAb IgG XP® Isotype Control
- XP** #2975 Rabbit (DA1E) mAb IgG XP® Isotype Control (Alexa Fluor® 488 Conjugate)
- New** #3969 Rabbit (DA1E) mAb IgG XP® Isotype Control (Alexa Fluor® 555 Conjugate)
- XP** #2985 Rabbit (DA1E) mAb IgG XP® Isotype Control (Alexa Fluor® 647 Conjugate)
- XP** #4096 Rabbit (DA1E) mAb IgG XP® Isotype Control (Biotinylated)
- XP** #3423 Rabbit (DA1E) mAb IgG XP® Isotype Control (Sepharose Bead Conjugate)
- XP** #8726 Rabbit (DA1E) mAb IgG XP® Isotype Control (Magnetic Bead Conjugate)
- XP** #5742 Rabbit (DA1E) mAb IgG XP® Isotype Control (PE Conjugate)
- #2729 Normal Rabbit IgG
- #4340 Rabbit IgG Isotype Control (Alexa Fluor® 488 Conjugate)
- #3452 Rabbit IgG Isotype Control (Alexa Fluor® 647 Conjugate)
- #3420 Mouse IgG (Sepharose Bead Conjugate)
- #5873 Mouse IgG (Magnetic Bead Conjugate)
- #5415 Mouse (G3A1) mAb IgG1 Isotype Control
- New** #9641 Mouse (G3A1) mAb IgG1 Isotype Control (Alexa Fluor® 555 Conjugate)
- #6899 Mouse (G3A1) mAb IgG1 Isotype Control (PE Conjugate)
- #4878 Mouse (MOPC-21) mAb IgG1 Isotype Control (Alexa Fluor® 488 Conjugate)
- #4843 Mouse (MOPC-21) mAb IgG1 Isotype control (Alexa Fluor® 647 Conjugate)
- #4097 Mouse (MOPC-21) mAb IgG1 Isotype Control (Biotinylated)

Epitope Tag Antibodies

- New** #8146 DYKDDDDK Tag (9A3) Mouse mAb (Binds to same epitope as Sigma's Anti-FLAG® M2 Antibody)
- #2368 DYKDDDDK Tag Antibody (Binds to same epitope as Sigma's Anti-FLAG® M2 Antibody)
- #2044 DYKDDDDK Tag Antibody (Binds to same epitope as Sigma's Anti-FLAG® M2 Antibody) (HRP Conjugate)
- #5407 DYKDDDDK Tag Antibody (Binds to same epitope as Sigma's Anti-FLAG® M2 Antibody) (Alexa Fluor® 488 Conjugate)
- #3768 DYKDDDDK Tag Antibody (Binds to same epitope as Sigma's Anti-FLAG® M2 Antibody) (Alexa Fluor® 555 Conjugate)
- New** #9696 DYKDDDDK Tag Antibody (Binds to same epitope as Sigma's Anti-FLAG® M2 Antibody) (Alexa Fluor® 594 Conjugate)
- #2908 DYKDDDDK Tag Antibody (Binds to same epitope as Sigma's Anti-FLAG® M2 Antibody) (Biotinylated)
- #2372 β-Gal (14B7) Mouse mAb
- XP** #2956 GFP (D5.1) XP® Rabbit mAb
- XP** #2912 GFP (D5.1) XP® Rabbit mAb (Biotinylated)
- XP** #2037 GFP (D5.1) XP® Rabbit mAb (HRP Conjugate)
- #2555 GFP Antibody
- #2955 GFP (4B10) Mouse mAb
- #9325 GSK-3β-Tag Antibody
- #2625 GST (91G1) Rabbit mAb
- #5746 GST (91G1) Rabbit mAb (Biotinylated)
- #5475 GST (91G1) Rabbit mAb (HRP Conjugate)
- #2624 GST (26H1) Mouse mAb
- #3368 GST (26H1) Mouse mAb (Alexa Fluor® 488 Conjugate)
- #3720 GST (26H1) Mouse mAb (Alexa Fluor® 555 Conjugate)
- #3445 GST (26H1) Mouse mAb (Alexa Fluor® 647 Conjugate)
- #3513 GST (26H1) Mouse mAb (Sepharose Bead Conjugate)
- #2622 GST Antibody
- #2448 Glu-Glu Tag Antibody
- #3724 HA-Tag (C29F4) Rabbit mAb
- #3956 HA-Tag (C29F4) Rabbit mAb (Sepharose Bead Conjugate)
- #5017 HA-Tag (C29F4) Rabbit mAb (Biotinylated)
- #2367 HA-Tag (6E2) Mouse mAb
- #2350 HA-Tag (6E2) Mouse mAb (Alexa Fluor® 488 Conjugate)
- #3444 HA-Tag (6E2) Mouse mAb (Alexa Fluor® 647 Conjugate)
- #2999 HA-Tag (6E2) Mouse mAb (HRP Conjugate)
- #2365 His-Tag Antibody
- #2366 His-Tag (27E8) Mouse mAb
- #4079 His-Tag (27E8) Mouse mAb (Sepharose Bead Conjugate)
- #2396 MBP (8G1) Mouse mAb
- #2278 Myc-Tag (71D10) Rabbit mAb
- #3946 Myc-Tag (71D10) Rabbit mAb (Biotinylated)
- #2272 Myc-Tag Antibody
- #2276 Myc-Tag (9B11) Mouse mAb
- #2279 Myc-Tag (9B11) Mouse mAb (Alexa Fluor® 488 Conjugate)
- #3756 Myc-Tag (9B11) Mouse mAb (Alexa Fluor® 555 Conjugate)
- New** #9483 Myc-Tag (9B11) Mouse mAb (Alexa Fluor® 594 Conjugate)
- #2233 Myc-Tag (9B11) Mouse mAb (Alexa Fluor® 647 Conjugate)
- #2040 Myc-Tag (9B11) Mouse mAb (HRP Conjugate)
- #3400 Myc-Tag (9B11) Mouse mAb (Sepharose Bead Conjugate)
- #5698 Myc-Tag (9B11) Mouse mAb (Magnetic Bead Conjugate)
- New** #3739 Myc-Tag (9B11) Mouse mAb (PE Conjugate)
- New** #8476 S-Tag Antibody
- #2547 Tat (8C2) Mouse mAb