

Antibodies and Related Reagents for Phospho-Motif Antibodies

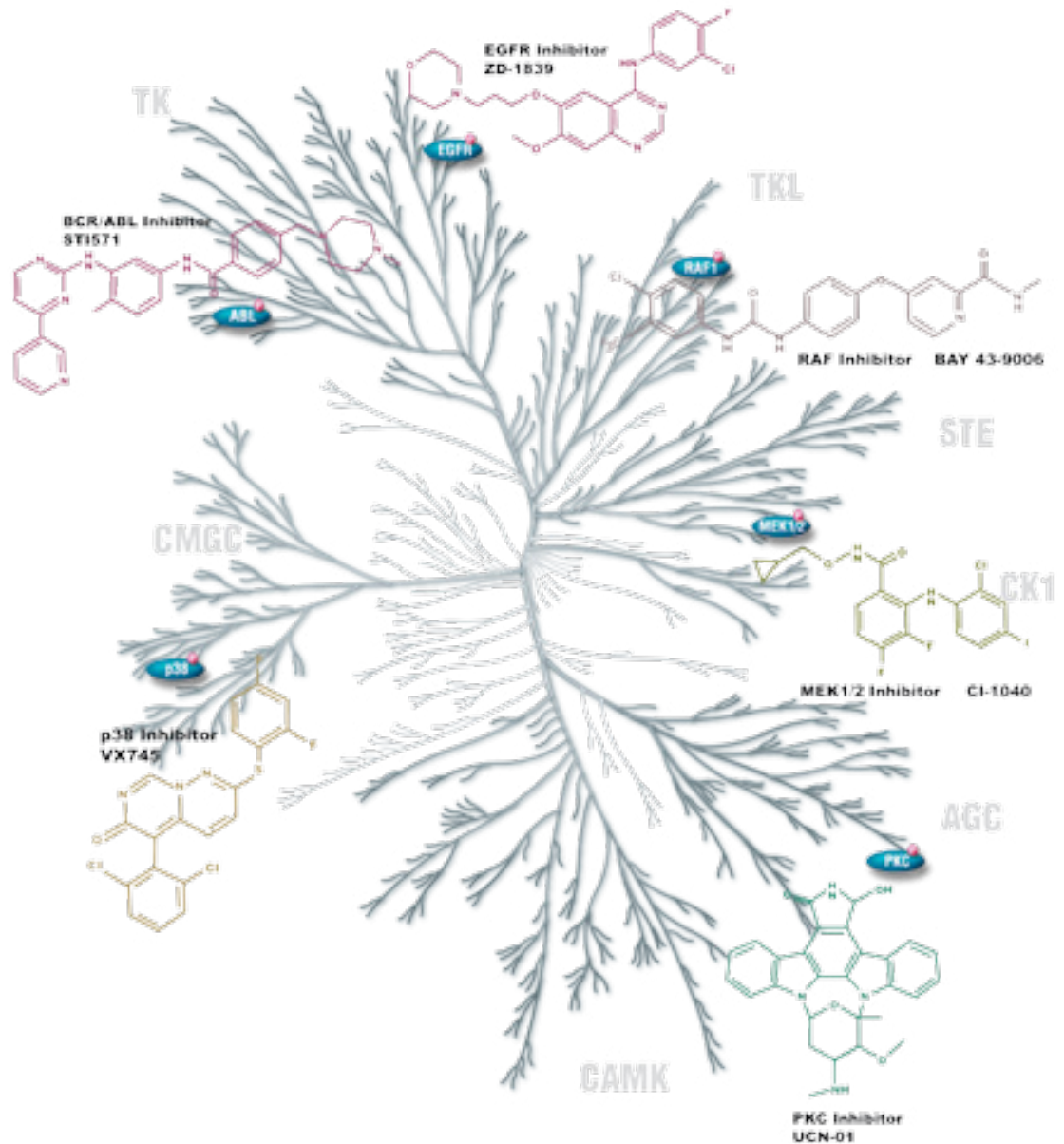
Product Pathways

>Motif Antibodies

Chromatin Regulation
 MAP Kinase Signaling
 Apoptosis and Autophagy
 PI3K / Akt Signaling
 Cellular Metabolism
 Translational Control
 Development and Differentiation
 Stem Cell and Lineage Markers
 Ca²⁺, cAMP, and Lipid Signaling
 Cell Cycle/Checkpoint Control
 NF-κB Signaling
 Lymphocyte Signaling
 Neuroscience
 Tyrosine Kinases and Docking Proteins
 Angiogenesis
 Nuclear Receptors and Phosphatases
 Cytoskeletal Signaling
 Adhesion
 Protein Folding and Stability

For Research Use Only.
 Not For Use In
 Diagnostic Procedures.

The Human Kinome





USA Headquarters

Cell Signaling Technology, Inc.
Tel: 978-867-2300
E-mail: info@cellsignal.com
www.cellsignal.com

International Subsidiaries

Cell Signaling Technology (China) Limited
Tel: (86) 21-5835-6288
E-mail: info@cst-c.com.cn
www.cellsignal.com

Cell Signaling Technology Europe
Tel: +31 (0)71 568 1060
E-mail: info@cellsignal.eu
www.cellsignal.com

Cell Signaling Technology Japan, K.K.
Tel: 03-3295-16300
E-mail: info@cstj.co.jp
www.cstj.co.jp

Phospho-Serine

| | Motif Recognized |
|---|--------------------|
| #9615 Phospho-(Ser) Kinase Substrate Antibody Sampler Kit [†] | |
| #9601 Phospho-(Ser) 14-3-3 Binding Motif Antibody [†] | (K/R)XXS*XP |
| #9606 Phospho-(Ser) 14-3-3 Binding Motif (4E2) Mouse mAb [†] | (K/R)XXS*XP |
| #2981 Phospho-(Ser) Arg-X-Tyr/Phe-X-pSer Motif Antibody [†] | RX(F/Y)XS* |
| #9607 Phospho-ATM/ATR Substrate (S*Q) (D23H2/D69H5) Rabbit mAb [†] | S*Q |
| #2325 Phospho-MAPK/CDK Substrates (PXS*P or S*PXR/K) (34B2) Rabbit mAb [†] | PXS*P, S*PX(K/R) |
| New #6967 Phospho-(Ser) PKC Substrate (P-S*-101) Rabbit mAb [†] | (K/R)XS*(K/R) |
| #2261 Phospho-(Ser) PKC Substrate Antibody [†] | (K/R)XS*(Hyd)(K/R) |

Phospho-Threonine

| | Motif Recognized |
|--|------------------|
| #2321 Phospho-(Thr) MAPK/CDK Substrate Mouse mAb [†] | T*P |
| #5243 Phospho-PLK Binding Motif (ST*P) (D73F6) Rabbit mAb [†] | ST*P |
| #9381 Phospho-Threonine Antibody (P-Thr-Polyclonal) [†] | T* |
| #6949 Phospho-Threonine Antibody (P-Thr-Polyclonal) (HRP Conjugate) [†] | T* |
| #9386 Phospho-Threonine (42H4) Mouse mAb [†] | T* |
| #9391 Phospho-Threonine-Proline Mouse mAb (P-Thr-Pro-101) [†] | T*P |
| #3004 Phospho-Thr-Pro-Glu (C32G12) Rabbit mAb [†] | T*PE, T*P |
| #2351 Phospho-Threonine-X-Arginine Antibody [†] | T*X(K/R) |

Phospho-Serine / Threonine

| | |
|--|------------------------------|
| #9614 Phospho-Akt Substrate (RXXS*/T*) (110B7E) Rabbit mAb [†] | RXX(S*/T*) |
| #6950 Phospho-Akt Substrate (RXXS*/T*) (110B7E) Rabbit mAb (HRP Conjugate) [†] | RXX(S*/T*) |
| #8050 Phospho-Akt Substrate (RXXS*/T*) (110B7E) Rabbit mAb (Magnetic Bead Conjugate) [†] | RXX(S*/T*) |
| #9646 Phospho-Akt Substrate (RXXS*/T*) (110B7E) Rabbit mAb (Sepharose Bead Conjugate) [†] | RXX(S*/T*) |
| New #10001 Phospho-Akt Substrate (RXRXS*/T*) (23C8D2) Rabbit mAb [†] | RXRX(S*/T*) |
| #9611 Phospho-(Ser/Thr) Akt Substrate Antibody [†] | (K/R)XX(S*/T*) |
| #5759 Phospho-(Ser/Thr) AMPK Substrate (P-S/T*-102) Rabbit mAb [†] | (L/M)RXRX(S*/T*), RXX(S*/T*) |
| #2909 Phospho-(Ser/Thr) ATM/ATR Substrate (4F7) Rabbit mAb [†] | L(S*/T*)Q |
| #2851 Phospho-(Ser/Thr) ATM/ATR Substrate Antibody [†] | L(S*/T*)Q |
| #6966 Phospho-(Ser/Thr) ATM/ATR Substrate (S*/T*QG) (P-S/T*-100) Rabbit mAb [†] | (S*/T*)QG, (S*/T*)Q |
| #9634 Phospho-(Ser/Thr) PDK1 Docking Motif (18A2) Mouse mAb [†] | (F/K)XX(F/Y)(S*/T*)(F/Y) |
| #9631 Phospho-(Ser/Thr) Phe Antibody [†] | (F/Y)W(S*/T*)(F) |
| #9624 Phospho-PKA Substrate (RRXS*/T*) (100G7E) Rabbit mAb [†] | (K/R)(K/R)X(S*/T*) |
| #9621 Phospho-(Ser/Thr) PKA Substrate Antibody [†] | (K/R)(K/R)X(S*/T*) |
| #4381 Phospho-(Ser/Thr) PKD Substrate Antibody [†] | LXRX(S*/T*) |

Phospho-Tyrosine

| | Motif Recognized |
|--|------------------|
| #9411 Phospho-Tyrosine Mouse mAb (P-Tyr-100) [†] | Y* |
| #9414 Phospho-Tyrosine Mouse mAb (P-Tyr-100) (Alexa Fluor® 488 Conjugate) [†] | Y* |
| #9415 Phospho-Tyrosine Mouse mAb (P-Tyr-100) (Alexa Fluor® 647 Conjugate) [†] | Y* |
| #9417 Phospho-Tyrosine Mouse mAb (P-Tyr-100) (Biotinylated) [†] | Y* |
| #5465 Phospho-Tyrosine Mouse mAb (P-Tyr-100) (HRP Conjugate) [†] | Y* |
| #8095 Phospho-Tyrosine Mouse mAb (P-Tyr-100) (Magnetic Bead Conjugate) [†] | Y* |
| #9419 Phospho-Tyrosine Mouse mAb (P-Tyr-100) (Sepharose Bead Conjugate) [†] | Y* |
| #9416 Phospho-Tyrosine Mouse mAb (P-Tyr-102) [†] | Y* |

Nitro-Tyrosine

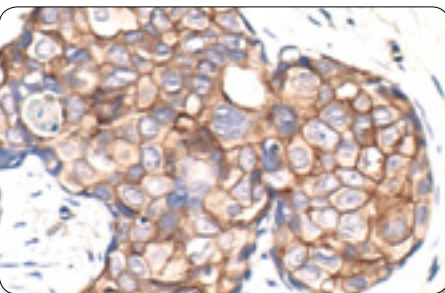
| | |
|--|-------------------|
| #9691 Nitro-Tyrosine Antibody [†] | Y-NO ₂ |
|--|-------------------|

Acetylated-Lysine

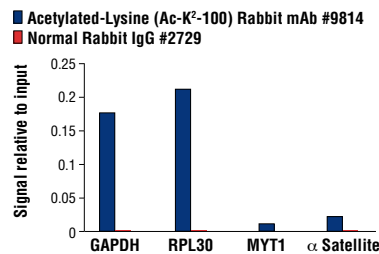
| | |
|--|------|
| #9814 Acetylated-Lysine (Ac-K ² -100) Rabbit mAb [†] | Ac-K |
| #6952 Acetylated-Lysine (Ac-K ² -100) Rabbit mAb (HRP Conjugate) [†] | Ac-K |
| #9441 Acetylated-Lysine Antibody [†] | Ac-K |
| #9681 Acetylated-Lysine Mouse mAb (Ac-K-103) [†] | Ac-K |

Mono-Methyl-Arginine

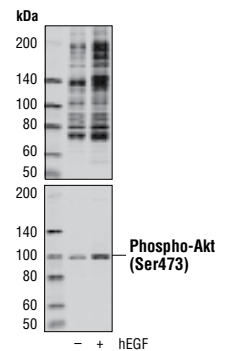
| | |
|---|--------|
| #8015 Mono-Methyl Arginine (Me-R4-100) Rabbit mAb [†] | Me-R |
| #8711 Mono-Methyl Arginine (R*GG) (D5A12) Rabbit mAb [†] | Me-RGG |



Phospho-Tyrosine Mouse mAb (P-Tyr-100) #9411: IHC analysis of paraffin-embedded human breast carcinoma using #9411.



Acetylated-Lysine (Ac-K²-100) Rabbit mAb #9814: Chromatin immunoprecipitations were performed with cross-linked chromatin from 4 x 10⁶ HeLa cells and either 10 μl of #9814 or 2 μl of Normal Rabbit IgG #2729, using SimpleChIP® Enzymatic Chromatin IP Kit (Magnetic Beads) #9003. The enriched DNA was quantified by real-time PCR using SimpleChIP® Human GAPDH Exon 1 Primers #5516, SimpleChIP® Human RPL30 Exon 3 Primers #7014, SimpleChIP® Human MYT-1 Exon 1 Primers #4493, and SimpleChIP® Human α-Satellite Repeat Primers #4486. The amount of immunoprecipitated DNA in each sample is represented as signal relative to the total amount of input chromatin, which is equivalent to one.



Phospho-Akt Substrate (RXRXS*/T*) (23C8D2) Rabbit mAb #10001: Western blot analysis of extracts from A-431 cells, untreated (-) or treated (+) with Human Epidermal Growth Factor (hEGF) #8916 (10 ng/ml, 20 min), using #10001 (upper), or Phospho-Akt (Ser473) (D9E) XP® Rabbit mAb #4060 (lower). Western blot images were obtained using the Odyssey® Infrared Imaging System (LI-COR® Biotechnology).