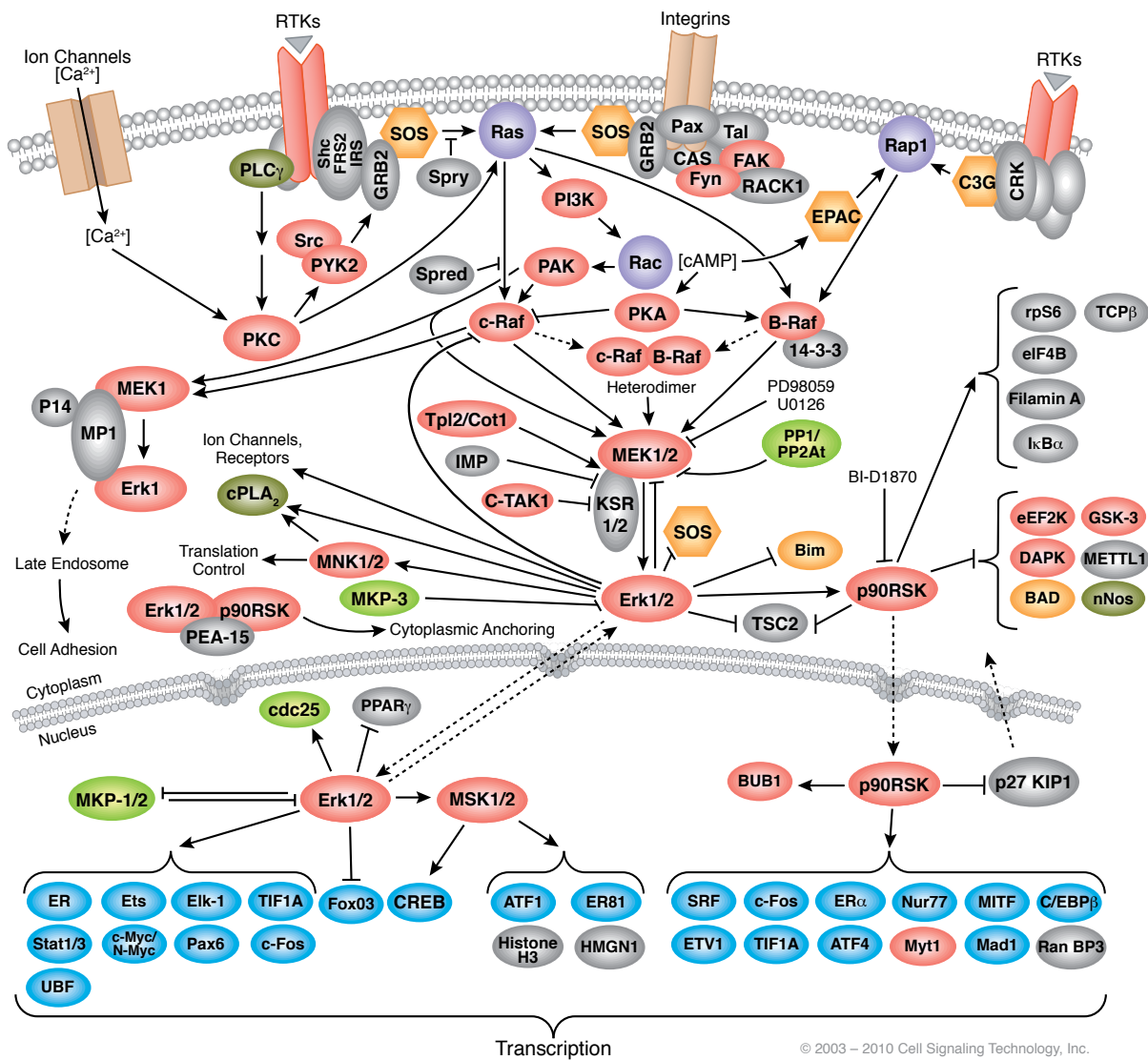


# Antibodies and Related Reagents for MAP Kinase Signaling

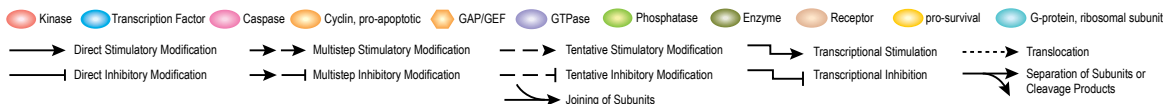
## Product Pathways

- Motif Antibodies
- Chromatin Regulation
- > MAP Kinase Signaling
- Apoptosis and Autophagy
- PI3K / Akt Signaling
- Cellular Metabolism
- Translational Control
- Development and Differentiation
- Stem Cell and Lineage Markers
- Ca<sup>2+</sup>, cAMP, and Lipid Signaling
- Cell Cycle/Checkpoint Control
- NF-κB Signaling
- Lymphocyte Signaling
- Neuroscience
- Tyrosine Kinases and Docking Proteins
- Angiogenesis
- Nuclear Receptors and Phosphatases
- Cytoskeletal Signaling
- Adhesion
- Protein Folding and Stability

## MAPK/Erk in Growth and Differentiation



For Research Use Only.  
Not For Use In  
Diagnostic Procedures.



# MAP Kinase Signaling

## MEK Antibody Comparison

	Reactivity	WB	IP	IHC	Flow	IF
#9154 Phospho-MEK1/2 (Ser217/221) (41G9) Rabbit mAb	H, M, R, Mk, Dm, (C)	++++	+++	-	-	-
#4660 Phospho-MEK1/2 (Ser217/221) (41G9) Rabbit mAb (Alexa Fluor® 488 Conjugate)	H, M, R, Mk, Dm, (C)	N/A	N/A	N/A	+++	N/T
#5068 Phospho-MEK1/2 (Ser217/221) (41G9) Rabbit mAb (Alexa Fluor® 647 Conjugate)	H, M, R, Mk, DM, (C)	N/A	N/A	N/A	+++	N/T
#3958 Phospho-MEK1/2 (Ser217/221) (41G9) Rabbit mAb (Biotinylated)	H, M, R, Mk, DM, (C)	++++	+++	N/A	N/T	N/T
#9121 Phospho-MEK1/2 (Ser217/221) Antibody	H, M, R, Mk, Sc, (C)	+++	+++	N/T	-	-
#2338 Phospho-MEK1/2 (Ser221) (166F8) Rabbit mAb	H, M, R, Mk, (Dg)	+++	-	+++	+++	-
#9127 Phospho-MEK1 (Thr286) Antibody	H, R, Mk, (M)	+++	+++	-	+++	+++
#9128 Phospho-MEK1 (Ser298) Antibody	H, M, R, Mk, (Dg)	+++	-	N/T	N/T	N/T
#9126 MEK1/2 (47E6) Rabbit mAb	H, M, R, Mk, (Dg)	+++	N/T	N/T	+++	+++
#8727 MEK1/2 (D1A5) Rabbit mAb	H, M, R, Mk, (Hm, Dm, X, Z, B, Dg, Pg, Ce)	++++	-	N/T	+++	+++
#9122 MEK1/2 Antibody	H, M, R, Mk, Dm, (C, X)	++++	+++	N/T	-	-
#4694 MEK1/2 (L38C12) Mouse mAb	H, M, R, Mk	++++	N/T	+++	+++	+++
#9146 MEK1 (30C8) Rabbit mAb	H, M, R, Mk	+++	-	N/T	-	-
#9124 MEK1 Antibody	H, M, R, Mk	+++	-	N/T	N/T	N/T
#2352 MEK1 (61B12) Mouse mAb	H, M, R, Mk	+++	+++	-	N/T	-
#9147 MEK2 (13E3) Rabbit mAb	H, M, R, Mk	+++	-	-	-	-
#9125 MEK2 Antibody	H, M, R, Mk	+++	+++	N/T	N/T	N/T

## p44/42 MAP Kinase (Erk 1/2) Antibody Comparison

	Reactivity	WB	IP	IHC	Flow	IF
#4370 Phospho-p44/42 MAPK (Erk1/2) (Thr202/Tyr204) (D13.14.4E) XP® Rabbit mAb	H, M, R, Mk, Mi, Pg, Sc, Hm, B, Dm, Z, Dg, (Ce)	++++	++++	++++	++++	++++
#4344 Phospho-p44/42 MAPK (Erk1/2) (Thr202/Tyr204) (D13.14.4E) XP® Rabbit mAb (Alexa Fluor® 488 Conjugate)	H, M, R, Mk, Mi, Pg, Sc, Hm, B, Dm, Z, Dg, (Ce)	N/A	N/A	N/T	++++	N/T
#4284 Phospho-p44/42 MAPK (Erk1/2) (Thr202/Tyr204) (D13.14.4E) XP® Rabbit mAb (Alexa Fluor® 647 Conjugate)	H, M, R, Mk, Mi, Pg, Sc, Hm, B, Dm, Z, Dg, (Ce)	N/A	N/A	N/T	++++	N/T
#4094 Phospho-p44/42 MAPK (Erk1/2) (Thr202/Tyr204) (D13.14.4E) XP® Rabbit mAb (Biotinylated)	H, M, R, Mk, Mi, Pg, Sc, Hm, B, Dm, Z, Dg, (Ce)	++++	N/T	N/A	++++	N/T
#3510 Phospho-p44/42 MAPK (Erk1/2) (Thr202/Tyr204) (D13.14.4E) XP® Rabbit mAb (Sepharose Bead Conjugate)	H, M, R, Mk, Mi, Pg, Sc, Hm, B, Dm, Z, Dg, (Ce)	N/A	+++	N/A	N/A	N/A
#5682 Phospho-p44/42 MAPK (Erk1/2) (Thr202/Tyr204) (D13.14.4E) XP® Rabbit mAb (PE Conjugate)	H, M, R, Mk, Mi, Pg, Sc, Hm, B, Dm, Z, Dg, (Ce)	N/A	N/A	N/A	++++	N/A
#4376 Phospho-p44/42 MAPK (Erk1/2) (Thr202/Tyr204) (20G11) Rabbit mAb	H, M, R, Mk, Mi, Pg, Dm, Z	+++	+++	+++	-	-
#4377 Phospho-p44/42 MAPK (Erk1/2) (Thr202/Tyr204) (197G2) Rabbit mAb	H, M, R, Mk, Mi, Pg, Dm, Z	+++	-	-	+++	+++
#9101 Phospho-p44/42 MAPK (Erk1/2) (Thr202/Tyr204) Antibody	H, M, R, Mk, Mi, Pg, C, Hm, B, Dm, Z	+++	++++	-	++	++
#9106 Phospho-p44/42 MAPK (Erk1/2) (Thr202/Tyr204) (E10) Mouse mAb	H, M, R, Mk, Mi, Pg, Hm, B, Dm, Z	++	++	-	++	++
#4374 Phospho-p44/42 MAPK (Erk1/2) (Thr202/Tyr204) (E10) Mouse mAb (Alexa Fluor® 488 Conjugate)	H, M, R, Mk, Mi, Pg, Hm, B, Dm, Z	N/A	N/A	N/A	++	-
#4375 Phospho-p44/42 MAPK (Erk1/2) (Thr202/Tyr204) (E10) Mouse mAb (Alexa Fluor® 647 Conjugate)	H, M, R, Mk, Mi, Pg, Hm, B, Dm, Z	N/A	N/A	N/A	++	-
#4695 p44/42 MAPK (Erk1/2) (137F5) Rabbit mAb	H, M, R, Mk, Mi, Pg, Sc, Hm, B, Dm, Z, Ce, Dg, (C)	++++	+++	++++	++++	++++
#4780 p44/42 MAPK (Erk1/2) (137F5) Rabbit mAb (Alexa Fluor® 488 Conjugate)	H, M, R, Mk, Mi, Pg, Sc, Hm, B, Dm, Z, Ce, Dg, (C)	N/A	N/A	N/A	++++	-
#5376 p44/42 MAPK (Erk1/2) (137F5) Rabbit mAb (Alexa Fluor® 647 Conjugate)	H, M, R, Mk, Mi, Pg, Sc, Hm, B, Dm, Z, Ce, Dg, (C)	N/A	N/A	N/A	++++	-
#5013 p44/42 MAPK (Erk1/2) (137F5) Rabbit mAb (Biotinylated)	H, M, R, Mk, Mi, Pg, Sc, Hm, B, Dm, Z, Ce, Dg, (C)	++++	+++	N/A	++++	N/T
#5736 p44/42 MAPK (Erk1/2) (137F5) Rabbit mAb (Sepharose Bead Conjugate)	H, M, R, Mk, Mi, Pg, Sc, Hm, B, Dm, Z, Ce, Dg, (C)	N/A	+++	N/A	N/A	N/A
#4348 p44/42 MAPK (Erk1/2) (137F5) Rabbit mAb (HRP Conjugate)	H, M, R, Mk, Mi, Pg, Sc, Hm, B, Dm, Z, Ce, Dg, (C)	++++	N/A	N/A	N/A	N/A
#9102 p44/42 MAPK (Erk1/2) Antibody	H, M, R, Mk, Mi, Pg, Sc, Hm, B, Z	+++	++	+++	++	++
#9107 p44/42 MAPK (Erk1/2) (3A7) Mouse mAb	H, M, R, Mk, Mi, Pg, Hm, Z	++	-	+++	-	-
#4696 p44/42 MAPK (Erk1/2) (L34F12) Mouse mAb	H, M, R, Mk, Mi, Pg, Z	+++	-	+++	+++	++
#9108 p42 MAP Kinase (Erk2) Antibody	H, M, R, Mk, Mi	+++	-	++	N/T	-
#4372 p44 MAP Kinase (Erk1) Antibody	M, R	+++	+++	N/T	-	-

## p38 MAP Kinase Antibody Comparison

	Reactivity	WB	IP	IHC	Flow	IF
#4511 Phospho-p38 MAPK (Thr180/Tyr182) (D3F9) XP® Rabbit mAb	H, M, R, Mk, Sc, (Hm, Pg, B, C, Z)	++++	++++	++++	++++	++++
#9215 Phospho-p38 MAPK (Thr180/Tyr182) (3D7) Rabbit mAb	H, M, R, Mk, Pg, Sc, Dm, (Hm, Mi, B, Z)	+++	-	-	++++	+++
#4092 Phospho-p38 MAPK (Thr180/Tyr182) (3D7) Rabbit mAb (Biotinylated)	H, M, R, Mk, Pg, Sc, Dm	+++	N/T	N/A	N/T	N/T
#4631 Phospho-p38 MAPK (Thr180/Tyr182) (12F8) Rabbit mAb	H, M, R, Mk, Dm, (Hm, Mi, Z)	++	-	+++	-	++++
#9211 Phospho-p38 MAPK (Thr180/Tyr182) Antibody	H, M, R, Mk, Pg, Sc, Dm, (Hm, B, Z)	+++	+++	-	++	++
#9216 Phospho-p38 MAPK (Thr180/Tyr182) (28B10) Mouse mAb	H, M, R, Mk, Sc, Dm, (Z)	++	++++	-	+++	-
#4551 Phospho-p38 MAPK (Thr180/Tyr182) (28B10) Mouse mAb (Alexa Fluor® 488 Conjugate)	H, M, R, Mk, Sc, Dm, (Z)	N/A	N/A	N/A	++++	N/T
#4552 Phospho-p38 MAPK (Thr180/Tyr182) (28B10) Mouse mAb (Alexa Fluor® 647 Conjugate)	H, M, R, Mk, Sc, Dm, (Z)	N/A	N/A	N/A	++++	N/T
#9219 Phospho-p38 MAPK (Thr180/Tyr182) (28B10) Mouse mAb (Sepharose Bead Conjugate)	H, M, R	N/A	++++	N/A	N/A	N/A
#8690 p38 MAPK (D13E1) XP® Rabbit mAb	H, M, R, Hm, Mk, Pg	++++	-	+++	++++	++++
#9212 p38 MAPK Antibody	H, M, R, Mk, (C)	++++	-	++++	++++	+++
#2371 p38α MAPK (7D6) Rabbit mAb	H, M, R, Mk	+++	-	-	-	-
#9218 p38α MAPK Antibody	H, M, R, Mk	++++	++++	++++	-	-
#9217 p38α MAPK (5F11) Mouse mAb	H, M, R	+++	-	-	-	N/T
#9228 p38α MAPK (L53F8) Mouse mAb	H, M, R, Mk, Sc	++++	-	-	+++	++++
#2339 p38β MAPK (C28C2) Rabbit mAb	H, Mk	+++	+++	-	-	-
#2308 p38δ MAPK (10A8) Rabbit mAb	H, R	++	+++	-	-	-
#9214 p38δ MAPK Antibody	H, R, Mk	++	-	-	N/T	N/T
#2307 p38γ MAPK Antibody	H, M, R, Mk	+++	+++	-	-	N/T

Testing Key: ++++ Very Highly Recommended / +++ Highly Recommended / ++ Recommended / - Not Recommended / N/T Not Tested / N/A Not Applicable

## Antibody Sampler Kits

- #9911 Phospho-Erk1/2 Pathway Sampler Kit
- #8333 Fos Family Antibody Sampler Kit
- #9910 Phospho-MAPK Family Antibody Sampler Kit
- #9926 MAPK Family Antibody Sampler Kit
- #9329 MAPKAPK-2 Antibody Sampler Kit
- #9913 Phospho-p38 MAPK Pathway Sampler Kit
- #9790 p38 MAPK Isoform Activation Antibody Sampler Kit
- #2330 Raf Family Antibody Sampler Kit
- #9326 p90RSK Antibody Sampler Kit
- #9912 Phospho-SAPK/JNK Pathway Antibody Sampler Kit
- #8357 Stress and Apoptosis Antibody Sampler Kit

## PathScan® Multiplex IF Kits

- #7967 PathScan® EGF Receptor Activation Multiplex IF Kit
- #8999 PathScan® Signaling Nodes Multiplex IF Kit

## PhosphoPlus® Antibody Duets

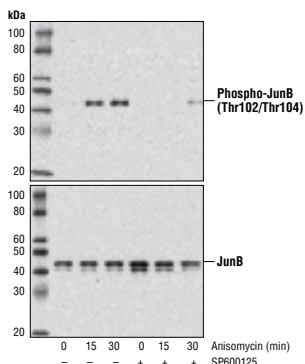
- #8220 PhosphoPlus® ATF-2 (Thr71) Antibody Duet
- #8221 PhosphoPlus® c-Jun (Ser63) Antibody Duet
- #8222 PhosphoPlus® c-Jun (Ser73) Antibody Duet
- #8211 PhosphoPlus® MEK1/2 (Ser217/Ser221) Antibody Duet
- #8203 PhosphoPlus® p38 MAPK (Thr180/Tyr182) Antibody Duet
- #8201 PhosphoPlus® p44/42 MAPK (Erk1/2) (Thr202/Tyr204) Antibody Duet
- #8206 PhosphoPlus® SAPK/JNK1 (Thr183/Tyr185) Antibody Duet

## Antibodies

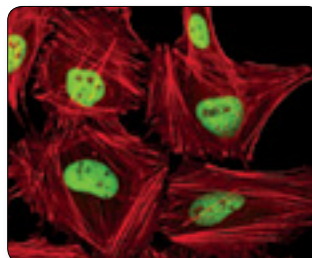
- #3761 Phospho-ASK1 (Ser83) Antibody
- #3765 Phospho-ASK1 (Thr845) Antibody
- #3764 Phospho-ASK1 (Ser967) Antibody
- #3762 ASK1 Antibody
- #9225 Phospho-ATF-2 (Thr69/71) Antibody
- #5112 Phospho-ATF-2 (Thr71) (11G2) Rabbit mAb
- #4036 Phospho-ATF-2 (Thr71) (11G2) Rabbit mAb (Biotinylated)
- #9221 Phospho-ATF-2 (Thr71) Antibody
- #9226 ATF-2 (20F1) Rabbit mAb
- #4229 Dexasr1 Antibody
- #9181 Phospho-Elk-1 (Ser383) Antibody
- #9186 Phospho-Elk-1 (Ser383) (2B1) Mouse mAb
- #9182 Elk-1 Antibody
- #9180 PhosphoPlus® Elk-1 (Ser383) Antibody Kit

- #4067 Erk3 Antibody
- #3371 Phospho-Erk5 (Thr218/Tyr220) Antibody
- #3552 Erk5 (D23E9) Rabbit mAb
- #3372 Erk5 Antibody
- #5122 FAM129B Antibody
- XP** #5348 Phospho-c-Fos (Ser32) (D82C12) XP® Rabbit mAb
- #2250 c-Fos (9F6) Rabbit mAb
- #4384 c-Fos Antibody
- #2251 FosB (5G4) Rabbit mAb
- #2023 FosB (5G4) Rabbit mAb (Alexa Fluor® 488 Conjugate)
- #2263 FosB Antibody
- #5841 Phospho-FRA1 (Ser265) (D22B1) Rabbit mAb
- #3880 Phospho-FRA1 (Ser265) Antibody
- #5281 FRA1 (D80B4) Rabbit mAb
- #3782 GCK Antibody
- #3369 GSTP1 (3F2) Mouse mAb
- #5146 HGK (D19H10) Rabbit mAb
- #3485 HGK Antibody
- #4356 HSF1 Antibody
- #2404 Phospho-HSP27 (Ser15) Antibody
- #2405 Phospho-HSP27 (Ser78) Antibody
- #2401 Phospho-HSP27 (Ser82) Antibody
- #2406 Phospho-HSP27 (Ser82) Antibody II
- #2442 HSP27 Antibody (Rodent Preferred)
- #2402 HSP27 (G31) Mouse mAb
- XP** #5519 JIP4/SPAG9 (D72F4) XP® Rabbit mAb
- #3708 JNK1 (2C6) Mouse mAb
- #4672 JNK2 Antibody
- #2305 JNK3 (55A8) Rabbit mAb
- #2361 Phospho-c-Jun (Ser63) (54B3) Rabbit mAb
- #5464 Phospho-c-Jun (Ser63) (54B3) Rabbit mAb (Biotinylated)
- #9261 Phospho-c-Jun (Ser63) II Antibody
- XP** #3270 Phospho-c-Jun (Ser73) (D47G9) XP® Rabbit mAb
- #9164 Phospho-c-Jun (Ser73) Antibody
- #2303 Phospho-c-Jun (Thr91) Antibody
- #2993 Phospho-c-Jun (Thr93) Antibody
- #2994 Phospho-c-Jun (Ser243) Antibody
- #9165 c-Jun (60A8) Rabbit mAb
- #2315 c-Jun (L70B11) Mouse mAb
- #9260 PhosphoPlus® c-Jun (Ser63) and c-Jun (Ser73) Antibody Kit
- New** #8053 Phospho-JunB (Thr102/Thr104) (D3C6) Rabbit mAb
- #3753 JunB (C37F9) Rabbit mAb
- #3746 JunB (G53) Antibody

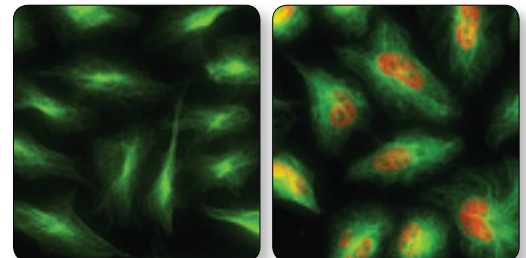
- #3755 JunB (P169) Antibody
- New** #5000 JunD (D17G2) Rabbit mAb
- #4951 Phospho-KSR1 (Ser392) Antibody
- #4640 KSR1 Antibody
- #3316 Phospho-MAPKAPK-2 (Thr222) (9A7) Rabbit mAb
- #3007 Phospho-MAPKAPK-2 (Thr334) (27B7) Rabbit mAb
- #4338 Phospho-MAPKAPK-2 (Thr334) (27B7) Rabbit mAb (Alexa Fluor® 488 Conjugate)
- #4320 Phospho-MAPKAPK-2 (Thr334) (27B7) Rabbit mAb (Alexa Fluor® 647 Conjugate)
- #3041 Phospho-MAPKAPK-2 (Thr334) Antibody
- #3042 MAPKAPK-2 Antibody
- #7421 MAPKAPK-3 (D54E4) Rabbit mAb
- #3043 MAPKAPK-3 Antibody
- #7419 MAPKAPK-5 (D70A10) Rabbit mAb
- #2325 Phospho-MAPK/CDK Substrates (PXS\*P or S\*PXR/K) (34B2) Rabbit mAb
- #2321 Phospho-(Thr) MAPK/CDK Substrate Mouse mAb
- #9737 Phospho-MEF2A (Ser408) Antibody
- #9736 MEF2A Antibody
- XP** #5030 MEF2C (D80C1) XP® Rabbit mAb
- #9127 Phospho-MEK1 (Thr286) Antibody
- #9128 Phospho-MEK1 (Ser298) Antibody
- #9154 Phospho-MEK1/2 (Ser217/221) (41G9) Rabbit mAb
- #4660 Phospho-MEK1/2 (Ser217/221) (41G9) Rabbit mAb (Alexa Fluor® 488 Conjugate)
- #5068 Phospho-MEK1/2 (Ser217/221) (41G9) Rabbit mAb (Alexa Fluor® 647 Conjugate)
- #3958 Phospho-MEK1/2 (Ser217/221) (41G9) Rabbit mAb (Biotinylated)
- #9121 Phospho-MEK1/2 (Ser217/221) Antibody
- #2338 Phospho-MEK1/2 (Ser221) (166F8) Rabbit mAb
- #9146 MEK1 (30C8) Rabbit mAb
- #2352 MEK1 (61B12) Mouse mAb
- #5744 MEK1 (61B12) Mouse mAb (Biotinylated)
- #9124 MEK1 Antibody
- #9126 MEK1/2 (47E6) Rabbit mAb
- #8727 MEK1/2 (D1A5) Rabbit mAb
- #4694 MEK1/2 (L38C12) Mouse mAb
- #9122 MEK1/2 Antibody
- #9120 PhosphoPlus® MEK1/2 (Ser217/221) Antibody Kit
- #9147 MEK2 (13E3) Rabbit mAb
- #9125 MEK2 Antibody
- #5727 MEKK3 (D36G5) Rabbit mAb
- #9236 Phospho-MKK3 (Ser189)/MKK6 (Ser207) (22A8) Rabbit mAb
- #9231 Phospho-MKK3 (Ser189)/MKK6 (Ser207) Antibody
- #5674 MKK3 Antibody



**Phospho-JunB (Thr102/Thr104) (D3C6) Rabbit mAb #8053 and JunB (C37F9) Rabbit mAb #3753:** Western blot analysis of extracts from 293T cells treated with anisomycin (25 ug/ml) for the indicated times, with or without pretreatment with JNK inhibitor SP600125 (40 min, 50 uM), using #8053 (upper) and #3753 (lower).



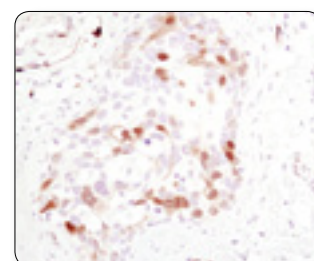
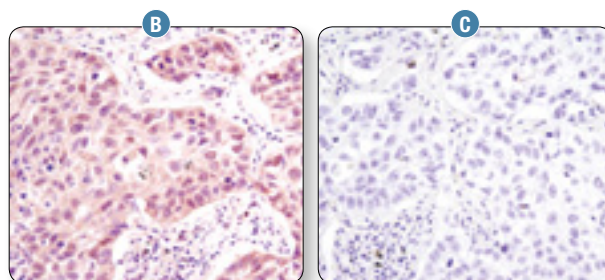
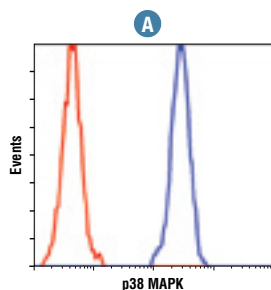
**JunD (D17G2) Rabbit mAb #5000:** Confocal IF analysis of HeLa cells using #5000 (green). Actin filaments were labeled with DY-554 phalloidin (red).



**Phospho-p38 MAPK (Thr180/Tyr182) (D3F9) XP® Rabbit mAb (Alexa Fluor® 555 Conjugate) #9836:** IF analysis of HeLa cells, untreated (left) or UV-treated (right), using #9836 (red) and  $\beta$ -Tubulin (9F3) Rabbit mAb (Alexa Fluor® 488 Conjugate) #3623 (green).



#9238	MKK3b Antibody	
#9264	MKK6 Antibody	
#4171	Phospho-MKK7 (Ser271/Thr275) Antibody	
#4172	MKK7 Antibody	
#2857	Phospho-MKP1 (Ser359) (125E2) Rabbit mAb	
#3058	MKP3 Antibody	
#3483	MKP5 Antibody	
#5029	MLK1 (D66E2) Rabbit mAb	
#9594	Phospho-MSK1 (Ser360) Antibody	
#9591	Phospho-MSK1 (Ser376) Antibody	
#9595	Phospho-MSK1 (Thr581) Antibody	
#3489	MSK1 (C27B2) Rabbit mAb	
<b>XP</b>	#3679 MSK2 (D41A4) XP® Rabbit mAb	
<b>XP</b>	#4511 Phospho-p38 MAPK (Thr180/Tyr182) (D3F9) XP® Rabbit mAb	
<b>New XP</b>	#9836 Phospho-p38 MAPK (Thr180/Tyr182) (D3F9) XP® Rabbit mAb (Alexa Fluor® 555 Conjugate)	
#4631	Phospho-p38 MAPK (Thr180/Tyr182) (12F8) Rabbit mAb	
#9215	Phospho-p38 MAPK (Thr180/Tyr182) (3D7) Rabbit mAb	
#4092	Phospho-p38 MAPK (Thr180/Tyr182) (3D7) Rabbit mAb (Biotinylated)	
#9216	Phospho-p38 MAPK (Thr180/Tyr182) (28B10) Mouse mAb	
#4551	Phospho-p38 MAPK (Thr180/Tyr182) (28B10) Mouse mAb (Alexa Fluor® 488 Conjugate)	
#4552	Phospho-p38 MAPK (Thr180/Tyr182) (28B10) Mouse mAb (Alexa Fluor® 647 Conjugate)	
#9219	Phospho-p38 MAPK (Thr180/Tyr182) Mouse mAb (Sepharose Bead Conjugate)	
#9211	Phospho-p38 MAPK (Thr180/Tyr182) Antibody	
<b>New XP</b>	#8690 p38 MAPK (D13E1) XP® Rabbit mAb	
#9212	p38 MAPK Antibody	
#2371	p38α MAPK (7D6) Rabbit mAb	
#9228	p38α MAPK (L53F8) Mouse mAb	
#9217	p38α MAPK (5F11) Mouse mAb	
#9218	p38α MAPK Antibody	
#2339	p38β MAPK (C28C2) Rabbit mAb	
#2308	p38δ MAPK (10A8) Rabbit mAb	
#9214	p38δ MAPK Antibody	
#2307	p38γ MAPK Antibody	
#9210	PhosphoPlus® p38 MAPK (Thr180/Tyr182) Antibody Kit	
<b>XP</b>	#4370 Phospho-p44/42 MAPK (Erk1/2) (Thr202/Tyr204) (D13.14.4E) XP® Rabbit mAb	
<b>XP</b>	#4344 Phospho-p44/42 MAPK (Erk1/2) (Thr202/Tyr204) (D13.14.4E) XP® Rabbit mAb (Alexa Fluor® 488 Conjugate)	
<b>XP</b>	#4284 Phospho-p44/42 MAPK (Erk1/2) (Thr202/Tyr204) (D13.14.4E) XP® Rabbit mAb (Alexa Fluor® 647 Conjugate)	
<b>XP</b>	#4094 Phospho-p44/42 MAPK (Erk1/2) (Thr202/Tyr204) (D13.14.4E) XP® Rabbit mAb (Biotinylated)	
<b>XP</b>	#3510 Phospho-p44/42 MAPK (Erk1/2) (Thr202/Tyr204) (D13.14.4E) XP® Rabbit mAb (Sepharose Bead Conjugate)	
<b>New XP</b>	#9488 Phospho-p44/42 MAPK (Erk1/2) (Thr202/Tyr204) (D13.14.4E) XP® Rabbit mAb (Magnetic Bead Conjugate)	
<b>XP</b>	#5682 Phospho-p44/42 MAPK (Erk1/2) (Thr202/Tyr204) (D13.14.4E) XP® Rabbit mAb (PE Conjugate)	
#4377	Phospho-p44/42 MAPK (Erk1/2) (Thr202/Tyr204) (197G2) Rabbit mAb	
#4376	Phospho-p44/42 MAPK (Erk1/2) (Thr202/Tyr204) (20G11) Rabbit mAb	
#9106	Phospho-p44/42 MAPK (Erk1/2) (Thr202/Tyr204) (E10) Mouse mAb	
#4374	Phospho-p44/42 MAPK (Erk1/2) (Thr202/Tyr204) (E10) Mouse mAb (Alexa Fluor® 488 Conjugate)	
#4375	Phospho-p44/42 MAPK (Erk1/2) (Thr202/Tyr204) (E10) Mouse mAb (Alexa Fluor® 647 Conjugate)	
#9101	Phospho-p44/42 MAPK (Erk1/2) (Thr202/Tyr204) Antibody	
#4695	p44/42 MAPK (Erk1/2) (137F5) Rabbit mAb	
#4780	p44/42 MAPK (Erk1/2) (137F5) Rabbit mAb (Alexa Fluor® 488 Conjugate)	
#5376	p44/42 MAPK (Erk1/2) (137F5) Rabbit mAb (Alexa Fluor® 647 Conjugate)	
#5013	p44/42 MAPK (Erk1/2) (137F5) Rabbit mAb (Biotinylated)	
#4348	p44/42 MAPK (Erk1/2) (137F5) Rabbit mAb (HRP Conjugate)	
#5736	p44/42 MAPK (Erk1/2) (137F5) Rabbit mAb (Sepharose Bead Conjugate)	
#9107	p44/42 MAPK (Erk1/2) (3A7) Mouse mAb	
#4696	p44/42 MAPK (Erk1/2) (L34F12) Mouse mAb	
#9102	p44/42 MAPK (Erk1/2) Antibody	
#9100	PhosphoPlus® p44/42 MAPK (Erk1/2) (Thr202/Tyr204) Antibody Kit	
#8110	Growth/Proliferation Marker: SignalStain® Phospho-p44/42 MAPK (Erk1/2) (Thr202/Tyr204) IHC Detection Kit	
#9108	p42 MAP Kinase (Erk2) Antibody	
#4372	p44 MAP Kinase (Erk1) Antibody	
#2776	Phospho-PEA-15 (Ser104) Antibody	
#2780	PEA-15 Antibody	
#2041	PP2A A Subunit (81G5) Rabbit mAb	
#2260	PP2A A Subunit (6G3) Rat mAb	
#2039	PP2A A Subunit Antibody	
#2290	PP2A B Subunit (100C1) Rabbit mAb	
#2259	PP2A C Subunit (52F8) Rabbit mAb	
#2038	PP2A C Subunit Antibody	
<b>XP</b>	#3549 PP2C-α (D18C10) XP® Rabbit mAb	
#2461	Phospho-Rac1/cdc42 (Ser71) Antibody	
#2465	Rac1/2/3 Antibody	
#4431	Phospho-A-Raf (Ser299) Antibody	
#4432	A-Raf Antibody	
#2696	Phospho-B-Raf (Ser445) Antibody	
#9433	B-Raf (55C6) Rabbit mAb	
#9434	B-Raf (L12G7) Mouse mAb	
#9421	Phospho-c-Raf (Ser259) Antibody	
#9431	Phospho-c-Raf (Ser289/296/301) Antibody	
#9423	Phospho-c-Raf (Ser296) Antibody	
#9427	Phospho-c-Raf (Ser338) (56A6) Rabbit mAb	
#9422	c-Raf Antibody	
#9380	Phospho-RanBP3 (Ser58) Antibody	
#3339	Ras (27H5) Rabbit mAb	
#3965	Ras Antibody	
#3334	RasGRP3 (C33A3) Rabbit mAb	
#5060	RKIP (G38) Antibody	
#5291	RKIP (V177) Antibody	
#4742	RKIP Antibody	
#9344	Phospho-p90RSK (Thr359/Ser363) Antibody	
#9335	Phospho-p90RSK (Ser380) (9D9) Rabbit mAb	
#9341	Phospho-p90RSK (Ser380) Antibody	
#9346	Phospho-p90RSK (Thr573) Antibody	
#8408	RSK1 (D6D5) Rabbit mAb	
#9333	RSK1 Antibody	
#9355	RSK1/RSK2/RSK3 (32D7) Rabbit mAb	
#9347	RSK1/RSK2/RSK3 Antibody	
#3556	Phospho-RSK2 (Ser227) (D53A11) Rabbit mAb	
#9324	Phospho-RSK2 (Tyr529) Antibody	
<b>XP</b>	#5528 RSK2 (D21B2) XP® Rabbit mAb	
#9340	RSK2 Antibody	
#9348	Phospho-RSK3 (Thr356/Ser360) Antibody	
#9343	RSK3 Antibody	
#4668	Phospho-SAPK/JNK (Thr183/Tyr185) (81E11) Rabbit mAb	
#4306	Phospho-SAPK/JNK (Thr183/Tyr185) (81E11) Rabbit mAb (Sepharose Bead Conjugate)	
#4671	Phospho-SAPK/JNK (Thr183/Tyr185) (98F2) Rabbit mAb	
#9255	Phospho-SAPK/JNK (Thr183/Tyr185) (G9) Mouse mAb	
#9257	Phospho-SAPK/JNK (Thr183/Tyr185) (G9) Mouse mAb (Alexa Fluor® 647 Conjugate)	
#5136	Phospho-SAPK/JNK (Thr183/Tyr185) (G9) Mouse mAb (Biotinylated)	



**p38 MAPK (D13E1) XP® Rabbit mAb #8690:** Flow cytometric analysis (A) of HeLa cells using #8690 (blue) compared to concentration-matched Rabbit (DA1E) mAb IgG XP® Isotype Control #3900 (red). IHC analysis of paraffin-embedded human lung carcinoma using #8690 in the presence of control peptide (B) or antigen-specific peptide (C).

**Phospho-p44/42 MAPK (Erk1/2) (Thr202/Tyr204) (D13.14.4E) XP® Rabbit mAb #4370:** IHC analysis of paraffin-embedded human breast carcinoma using #4370.

- #5755 Phospho-SAPK/JNK (Thr183/Tyr185) (G9) Mouse mAb (PE Conjugate)
- #9251 Phospho-SAPK/JNK (Thr183/Tyr185) Antibody
- #9258 SAPK/JNK (56G8) Rabbit mAb
- #9252 SAPK/JNK Antibody
- #9250 PhosphoPlus® SAPK/JNK (Thr183/Tyr185) Antibody Kit
- #9155 Phospho-SEK1/MKK4 (Ser80) Antibody
- #4514 Phospho-SEK1/MKK4 (Ser257) (C36C11) Rabbit mAb
- #9156 Phospho-SEK1/MKK4 (Ser257/Thr261) Antibody
- #9151 Phospho-SEK1/MKK4 (Thr261) Antibody
- #3346 SEK1 (5C10) Rabbit mAb
- #9152 SEK1/MKK4 Antibody
- #3751 Phospho-SHP-2 (Tyr542) Antibody
- #5431 Phospho-SHP-2 (Tyr580) (D66F10) Rabbit mAb
- #3703 Phospho-SHP-2 (Tyr580) Antibody
- #3397 SHP-2 (D50F2) Rabbit mAb
- #3752 SHP-2 Antibody
- #5890 SOS1 Antibody
- #4261 Phospho-SRF (Ser103) Antibody
- XP** #5147 SRF (D71A9) XP® Rabbit mAb
- #3226 TAB1 (C25E9) Rabbit mAb
- #3225 TAB1 Antibody
- #8155 Phospho-TAB2 (Ser372) (D5A4) Rabbit mAb
- #3745 TAB2 (C88H10) Rabbit mAb
- #3744 TAB2 Antibody
- #4508 Phospho-TAK1 (Thr184/187) (90C7) Rabbit mAb
- #4537 Phospho-TAK1 (Thr184) Antibody
- #4531 Phospho-TAK1 (Thr184/187) Antibody
- #4536 Phospho-TAK1 (Thr187) Antibody
- #9339 Phospho-TAK1 (Ser412) Antibody
- #5206 TAK1 (D94D7) Rabbit mAb
- #4505 TAK1 Antibody
- #4491 Phospho-Tpl2 (Ser400) Antibody
- #4752 VHR Antibody
- #3260 VRK3 Antibody

## PathScan® Sandwich ELISA

- #7982 PathScan® RTK Signaling Antibody Array Kit (Chemiluminescent Readout)
- #7949 PathScan® RTK Signaling Antibody Array Kit (Fluorescent Readout)
- #7239 PathScan® Cell Growth Multi-Target Sandwich ELISA Kit
- #7276 PathScan® Inflammation Multi-Target Sandwich ELISA Kit
- #7274 PathScan® MAP Kinase Multi-Target Sandwich ELISA Kit
- #7272 PathScan® Signaling Nodes Multi-Target Sandwich ELISA Kit
- #7185 PathScan® Phospho-ATF-2 (Thr71) Sandwich ELISA kit
- #7290 PathScan® Phospho-HSP27 (Ser78) Sandwich ELISA Kit
- #7152 PathScan® Phospho-HSP27 (Ser82) Sandwich ELISA Kit
- #7295 PathScan® Total HSP27 Sandwich ELISA Kit
- #7145 PathScan® Phospho-c-Jun (Ser63) Sandwich ELISA Kit II
- #7150 PathScan® Total c-Jun Sandwich ELISA Kit II
- #7175 PathScan® Phospho-MEK1 (Ser217/221) Sandwich ELISA Kit

- #7165 PathScan® Total MEK1 Sandwich ELISA Kit
- #7946 PathScan® Phospho-p38 MAPK (Thr180/Tyr182) Sandwich ELISA Kit
- #7315 PathScan® Phospho-p44 MAPK (Thr202/Tyr204) Sandwich ELISA Kit
- #7177 PathScan® Phospho-p44/42 MAPK (Thr202/Tyr204) Sandwich ELISA Kit
- #7246 PathScan® Phospho-p44/42 MAPK (Thr202/Tyr204) Sandwich ELISA Antibody Pair
- #7325 PathScan® Phospho-SAPK/JNK (Thr183/Tyr185) Sandwich ELISA Kit
- #7330 PathScan® Total SAPK/JNK Sandwich ELISA Kit

## SignalSilence® siRNA

- #6433 SignalSilence® ATF-2 siRNA I
- #6443 SignalSilence® ATF-2 siRNA II
- #6356 SignalSilence® HSP27 siRNA I
- #6526 SignalSilence® HSP27 siRNA II
- #6203 SignalSilence® c-Jun siRNA I
- #6204 SignalSilence® c-Jun siRNA II
- #6426 SignalSilence® MEK1 siRNA I
- #6530 SignalSilence® MEK1 siRNA II
- #6431 SignalSilence® MEK2 siRNA I
- #6402 SignalSilence® MEK2 siRNA I (Mouse Specific)
- #6532 SignalSilence® MEK2 siRNA II
- #6403 SignalSilence® MEK2 siRNA II (Mouse Specific)
- #6294 SignalSilence® MKK3 siRNA I
- #6295 SignalSilence® MKK3 siRNA II
- #6322 SignalSilence® MKK7 siRNA I
- #6323 SignalSilence® MKK7 siRNA II
- #6564 SignalSilence® p38 MAPK siRNA I
- #6243 SignalSilence® p38 MAPK siRNA II
- #6269 SignalSilence® p38α MAPK siRNA I
- #6417 SignalSilence® p38α MAPK siRNA I (Mouse Specific)
- #6277 SignalSilence® p38α MAPK siRNA II
- #6418 SignalSilence® p38α MAPK siRNA II (Mouse Specific)
- #6278 SignalSilence® p38β MAPK siRNA I
- #6279 SignalSilence® p38β MAPK siRNA II
- #6600 SignalSilence® p38δ MAPK siRNA I
- #6601 SignalSilence® p38δ MAPK siRNA II
- #6632 SignalSilence® p38γ MAPK siRNA I
- #6633 SignalSilence® p38γ MAPK siRNA II
- #6540 SignalSilence® p42 MAP Kinase (Erk2) siRNA I
- #6578 SignalSilence® p42 MAP Kinase (Erk2) siRNA II
- #6560 SignalSilence® p44/42 MAPK (Erk1/2) siRNA
- #6436 SignalSilence® p44 MAPK (Erk1) siRNA I
- #6352 SignalSilence® p44 MAPK (Erk1) siRNA I (Mouse Specific)
- #6296 SignalSilence® RKIP siRNA I
- #6297 SignalSilence® RKIP siRNA II
- #6309 SignalSilence® RSK1 siRNA I
- #6313 SignalSilence® RSK1 siRNA II
- #6232 SignalSilence® SAPK/JNK siRNA I
- #6233 SignalSilence® SAPK/JNK siRNA II
- New** #7917 SignalSilence® SHP-2 siRNA I
- New** #7927 SignalSilence® SHP-2 siRNA II
- #6317 SignalSilence® TAK1 siRNA I
- #6318 SignalSilence® TAK1 siRNA II

## Kinases

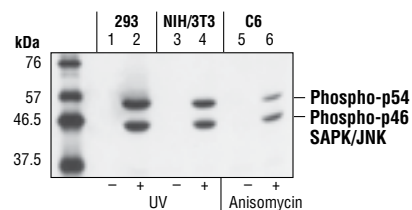
- #9820 p38 MAP Kinase Assay Kit (Nonradioactive)

## Controls

- #1040 Phospho-ATF-2 (Thr69/71) Blocking Peptide
- #9224 ATF-2 Fusion Protein
- #9223 ATF-2 Control Cell Extracts
- #9184 Elk-1 Fusion Protein
- #9183 Elk-1 Control Proteins
- #1042 FosB Blocking Peptide
- #1020 Phospho-c-Jun (Ser63) II Blocking Peptide
- #1030 Phospho-c-Jun (Ser73) Blocking Peptide
- #6093 c-Jun Fusion Protein
- #9811 c-Jun Fusion Protein Beads
- #9263 c-Jun Control Cell Extracts
- #1041 Phospho-MAPKAPK-2 (Thr334) Blocking Peptide
- #1210 Phospho-MEK1/2 (Ser221) Blocking Peptide
- #9160 MEK1/2 HeLa Control Cell Extracts
- #9233 MKK3/MKK6 Control Cell Extracts
- #9213 p38 MAPK Control Cell Extracts
- #1170 Phospho-p38 MAPK (Thr180/Tyr182) Blocking Peptide
- #1150 Phospho-p44/42 MAPK (Erk1/2) (Thr202/Tyr204) Blocking Peptide
- #8103 SignalSlide® Phospho-p44/42 MAPK (Thr202/Tyr204) IHC Controls
- #9103 p44/42 MAPK (Erk1/2) Control Proteins
- #9194 p44/42 MAPK (Erk1/2) Control Cell Extracts
- #1240 p44/42 MAPK (Erk1/2) Blocking Peptide (#4695 Specific)
- #1245 p44/42 MAPK (Erk1/2) Blocking Peptide (#4696 Specific)
- #1054 PP2A A Subunit Blocking Peptide
- #1051 PP2A B Subunit Blocking Peptide
- #1067 PP2A C Subunit Blocking Peptide
- #9253 SAPK/JNK Control Cell Extracts
- #1215 Phospho-SAPK/JNK (Thr183/Tyr185) Blocking Peptide

## Chemical Modulators

- #9903 U0126 (MEK1/2 Inhibitor)
- #9900 PD98059 (MEK1 Inhibitor)
- #5633 SB203580 (p38 Inhibitor)



**Phospho-SAPK/JNK (Thr183/Tyr185) (G9) Mouse mAb #9255:** Western blot analysis of extracts from 293 cells, untreated or UV-treated (lanes 1 and 2), NIH/3T3 cells, untreated or UV-treated (lanes 3 and 4) and C6 cells, untreated or anisomycin-treated (lanes 5 and 6), using #9255.

**USA Headquarters**

Cell Signaling Technology, Inc.  
Tel: 978-867-2300  
E-mail: info@cellsignal.com  
www.cellsignal.com

**International Subsidiaries**

Cell Signaling Technology (China) Limited  
Tel: (86) 21-5835-6288  
E-mail: info@cst-c.com.cn  
www.cellsignal.com

Cell Signaling Technology Europe  
Tel: +31 (0)71 568 1060  
E-mail: info@cellsignal.eu  
www.cellsignal.com

Cell Signaling Technology Japan, K.K.  
Tel: 03-3295-16300  
E-mail: info@cstj.co.jp  
www.cstj.co.jp

**SAPK/JNK Signaling Cascades**

