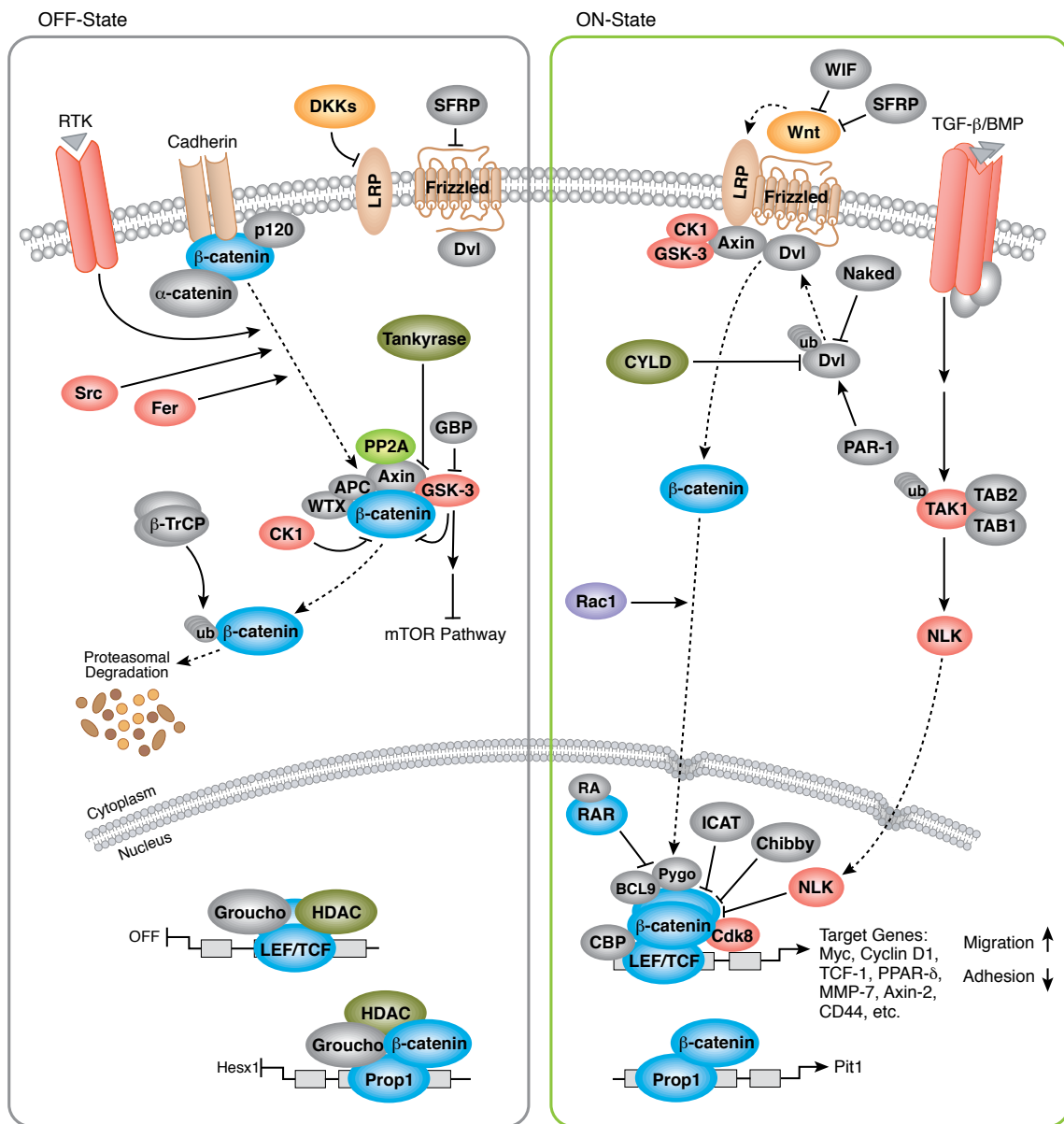


# Antibodies and Related Reagents for Development and Differentiation

## Product Pathways

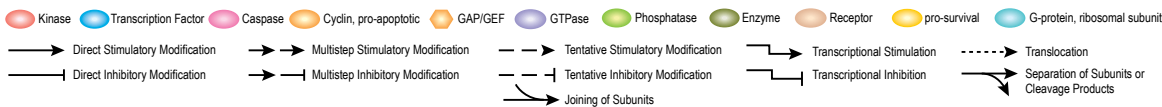
- Motif Antibodies
- Chromatin Regulation
- MAP Kinase Signaling
- Apoptosis and Autophagy
- PI3K / Akt Signaling
- Cellular Metabolism
- Translational Control
- > Development and Differentiation
- Stem Cell and Lineage Markers
- Ca<sup>2+</sup>, cAMP, and Lipid Signaling
- Cell Cycle/Checkpoint Control
- NF-κB Signaling
- Lymphocyte Signaling
- Neuroscience
- Tyrosine Kinases and Docking Proteins
- Angiogenesis
- Nuclear Receptors and Phosphatases
- Cytoskeletal Signaling
- Adhesion
- Protein Folding and Stability

## Wnt/β-Catenin Signaling



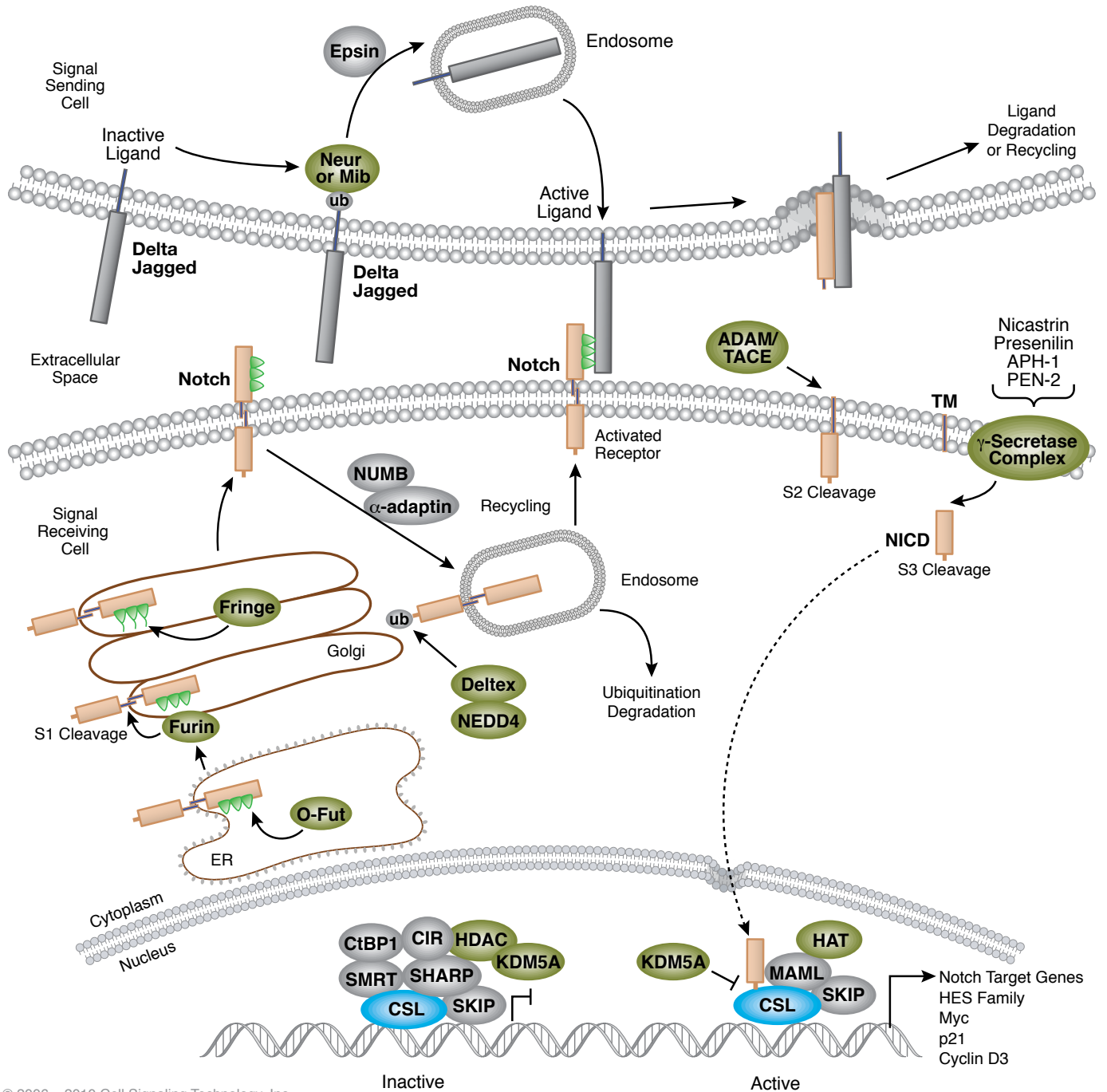
© 2003 – 2010 Cell Signaling Technology, Inc.

For Research Use Only.  
Not For Use In  
Diagnostic Procedures.

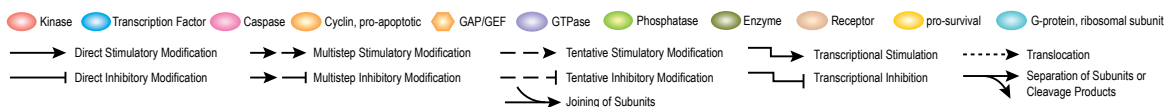


# Development and Differentiation

## Notch Signaling



© 2006 – 2010 Cell Signaling Technology, Inc.



## Wnt/Hedgehog/Hippo/Notch Signaling

### Antibody Sampler Kits

- #2951  $\beta$ -Catenin Antibody Sampler Kit
- #9782 Epithelial-Mesenchymal Transition (EMT) Antibody Sampler Kit
- #8358 Hedgehog Signaling Antibody Sampler Kit
- #3640 Notch Isoform Antibody Sampler Kit
- #9383 TCF/LEF1 Antibody Sampler Kit
- #2915 Wnt Signaling Antibody Sampler Kit

### PhosphoPlus® Antibody Duets

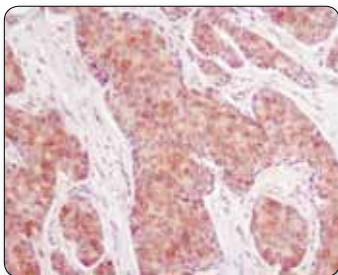
- #8216 PhosphoPlus® Notch1 (Cleaved, Val1744) Antibody Duet

### Antibodies

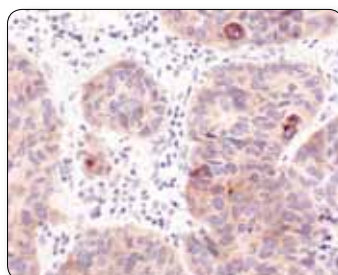
- New** #4448 AFP (D12C1) Rabbit mAb
- #3903 AFP (3H8) Mouse mAb
- #2137 AFP Antibody
- #2504 APC Antibody
- #2087 Axin1 (C76H11) Rabbit mAb
- #3323 Axin1 (C7B12) Rabbit mAb
- #2074 Axin1 (C95H11) Rabbit mAb
- #5863 Axin2 (D48G4) Rabbit mAb
- #2151 Axin2 (76G6) Rabbit mAb
- #4693 BMP7 Antibody
- New** #8225 CACYBP (D43G11) Rabbit mAb
- #3354 CACYBP Antibody
- #9534 Acetyl- $\beta$ -Catenin (Lys49) Antibody
- #2009 Phospho- $\beta$ -Catenin (Ser33/37) Antibody
- #9561 Phospho- $\beta$ -Catenin (Ser33/37/Thr41) Antibody
- #9565 Phospho- $\beta$ -Catenin (Thr41/Ser45) Antibody
- #9564 Phospho- $\beta$ -Catenin (Ser45) Antibody
- #5651 Phospho- $\beta$ -Catenin (Ser552) (D8E11) Rabbit mAb
- #9566 Phospho- $\beta$ -Catenin (Ser552) Antibody
- XP** #4176 Phospho- $\beta$ -Catenin (Ser675) (D2F1) XP® Rabbit mAb
- #9567 Phospho- $\beta$ -Catenin (Ser675) Antibody
- #4270 Non-phospho- $\beta$ -Catenin (Ser33/37/Thr41) Antibody
- #9582  $\beta$ -Catenin (6B3) Rabbit mAb
- #9562  $\beta$ -Catenin Antibody
- #9581  $\beta$ -Catenin Antibody (Amino-terminal Antigen)
- #9587  $\beta$ -Catenin Antibody (Carboxy-terminal Antigen)
- #2677  $\beta$ -Catenin (L54E2) Mouse mAb (IF Preferred)
- #2849  $\beta$ -Catenin (L54E2) Mouse mAb (Alexa Fluor® 488 Conjugate)

- #5612  $\beta$ -Catenin (L54E2) Mouse mAb (Alexa Fluor® 555 Conjugate)
- #4627  $\beta$ -Catenin (L54E2) Mouse mAb (Alexa Fluor® 647 Conjugate)
- #5265  $\beta$ -Catenin (L54E2) Mouse mAb (Biotinylated)
- #6898  $\beta$ -Catenin (L54E2) Mouse mAb (PE Conjugate)
- #2698  $\beta$ -Catenin (L87A12) Mouse mAb
- #8126 CDC73 (D38E12) Rabbit mAb
- #3644 CDC73 (A264) Antibody
- #3645 CDC73 (D410) Antibody
- #2655 CK1 Antibody
- #4500 Phospho-CYLD (Ser418) Antibody
- New** #8462 CYLD (D1A10) Rabbit mAb
- #4495 CYLD Antibody
- #2663 Deltex-2 Antibody
- #4687 DKK1 Antibody
- #4683 DKK2 (G44) Antibody
- #4689 DKK2 (N70) Antibody
- #2588 DLL1 Antibody
- #2483 DLL3 (G93) Antibody
- #2589 DLL4 Antibody
- #3224 Dvl2 (30D2) Rabbit mAb
- #3216 Dvl2 Antibody
- #3218 Dvl3 Antibody
- #5430 Emerin (D9B3) Rabbit mAb
- #7415 FoxC1 Antibody
- #2019 FoxD3 (D20A9) Rabbit mAb
- XP** #4402 FoxP1 (D35D10) XP® Rabbit mAb
- #2005 FoxP1 Antibody
- #5337 FoxP2 (D55H9) Rabbit mAb
- #5298 FoxP3 (D25D4) Rabbit mAb
- #5266 Frizzled5 (D2H2) Rabbit mAb
- #3795 Frizzled5 Antibody
- #5158 Frizzled6 (D16E5) Rabbit mAb
- #3538 GLI1 (C68H3) Rabbit mAb
- #2534 GLI1 (V812) Antibody
- #2553 GLI1 Antibody
- #2643 GLI1 (L42B10) Mouse mAb
- #2585 GLI2 (R770) Antibody
- #9316 Phospho-GSK-3 $\alpha$  (Ser21) (36E9) Rabbit mAb
- #8452 Phospho-GSK-3 $\alpha$  (Ser21) (D1G2) Rabbit mAb
- #5090 Phospho-GSK-3 $\alpha$  (Ser21) (27E5) Mouse mAb
- #9337 Phospho-GSK-3 $\alpha$  (Ser21) (46H12) Mouse mAb
- #9327 Phospho-GSK-3 $\alpha$ / $\beta$  (Ser21/9) (37F11) Rabbit mAb (GSK-3 $\alpha$  Preferred)
- #8566 Phospho-GSK-3 $\alpha$ / $\beta$  (Ser21/9) (D17D2) Rabbit mAb
- #9331 Phospho-GSK-3 $\alpha$ / $\beta$  (Ser21/9) Antibody

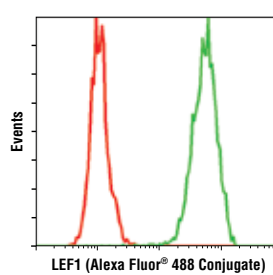
- XP** #5558 Phospho-GSK-3 $\beta$  (Ser9) (D85E12) XP® Rabbit mAb
- #9322 Phospho-GSK-3 $\beta$  (Ser9) (D3A4) Rabbit mAb
- #9323 Phospho-GSK-3 $\beta$  (Ser9) (5B3) Rabbit mAb
- #9336 Phospho-GSK-3 $\beta$  (Ser9) Antibody
- #3548 Phospho-GSK-3 $\beta$  (Thr390) Antibody
- XP** #4818 GSK-3 $\alpha$  (D80D1) XP® Rabbit mAb
- #4337 GSK-3 $\alpha$  (D80E6) Rabbit mAb
- #9338 GSK-3 $\alpha$  Antibody
- XP** #5676 GSK-3 $\alpha$ / $\beta$  (D75D3) XP® Rabbit mAb
- #9315 GSK-3 $\beta$  (27C10) Rabbit mAb
- #9832 GSK-3 $\beta$  (3D10) Mouse mAb
- #3431 Id2 (D39E8) Rabbit mAb
- #2155 Jagged1 (1C4) Rabbit mAb
- #2620 Jagged1 (28H8) Rabbit mAb
- #2210 Jagged2 (C23D2) Rabbit mAb
- #2205 Jagged2 (C83A8) Rabbit mAb
- New** #8774 KIBRA Antibody
- #9157 Phospho-LATS1 (Ser909) Antibody
- New** #8654 Phospho-LATS1 (Thr1079) (D57D3) Rabbit mAb
- #9159 Phospho-LATS1 (Thr1079) Antibody
- #3477 LATS1 (C66B5) Rabbit mAb
- #9153 LATS1 Antibody
- New** #5888 LATS2 (D83D6) Rabbit mAb
- #2230 LEF1 (C12A5) Rabbit mAb
- New** #8490 LEF1 (C12A5) Rabbit mAb (Alexa Fluor® 488 Conjugate)
- #2286 LEF1 (C18A7) Rabbit mAb
- #5440 LRP5 (D5G4) Rabbit mAb
- #5731 LRP5 (D80F2) Rabbit mAb
- #3889 LRP5 (D23F7) Rabbit mAb
- #2568 Phospho-LRP6 (Ser1490) Antibody
- #3395 LRP6 (C47E12) Rabbit mAb
- #2560 LRP6 (C5C7) Rabbit mAb
- #4608 MAML1 Antibody
- #6988 MAML2 (D41E6) Rabbit mAb
- #4618 MAML2 Antibody
- XP** #4319 Mer (D21F11) XP® Rabbit mAb
- #9178 Mer (348E6) Mouse mAb
- #2763 MESDC2 (C22F5) Rabbit mAb
- #4400 MIB1 Antibody
- New** #8843 Phospho-MOB1 (Thr12) (D2E3) Rabbit mAb
- #3863 MOB1 Antibody
- #3681 Phospho-Mst1 (Thr183)/Mst2 (Thr180) Antibody
- #3682 Mst1 Antibody
- #4787 Msx1 (G116) Antibody
- #5378 Msx1 (P5) Antibody



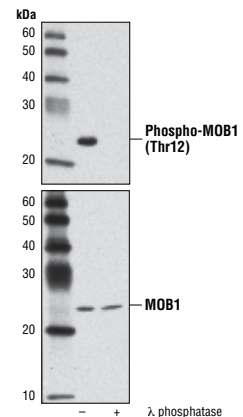
**CACYBP (D43G11) Rabbit mAb #8225:** IHC analysis of paraffin-embedded human breast carcinoma using #8225.



**Phospho-GSK-3 $\alpha$  (Ser21) (36E9) Rabbit mAb #9316:** IHC analysis of paraffin-embedded human lung carcinoma using #9316.



**LEF1 (C12A5) Rabbit mAb (Alexa Fluor® 488 Conjugate) #8490:** Flow cytometric analysis of Jurkat cells using #8490 (green) compared to concentration-matched Rabbit (DA1E) mAb IgG XP® Isotype Control (Alexa Fluor® 488 Conjugate) #2975 (red).



**Phospho-MOB1 (Thr12) (D2E3) Rabbit mAb #8843 and MOB1 Antibody #3863:** Western blot analysis of extracts from Ramos cells, untreated (-) or  $\lambda$  phosphatase-treated (+), using #8843 (upper) and #3863 (lower).



#2201	Naked1 (C30F10) Rabbit mAb
#2262	Naked1 Antibody
#2596	Naked2 (C36D3) Rabbit mAb
#2073	Naked2 (C67C4) Rabbit mAb
#4147	Cleaved Notch1 (Val1744) (D3B8) Rabbit mAb
#2421	Cleaved Notch1 (Val1744) Antibody
<b>XP</b> #4380	Notch1 (D6F11) XP® Rabbit mAb
<b>XP</b> #3608	Notch1 (D1E11) XP® Rabbit mAb
#3439	Notch1 (C37C7) Rabbit mAb
#3268	Notch1 (C44H11) Rabbit mAb
#3447	Notch1 (5B5) Rat mAb
<b>XP</b> #5732	Notch2 (D76A6) XP® Rabbit mAb
<b>XP</b> #4530	Notch2 (D67C8) XP® Rabbit mAb
#2420	Notch2 (8A1) Rabbit mAb
#5276	Notch3 (D11B8) Rabbit mAb
#2889	Notch3 Antibody
#3446	Notch3 (8G5) Rat mAb
#2423	Notch4 (L5C5) Mouse mAb
#9878	Phospho-Numb (Ser276) (D5C2) Rabbit mAb
#4140	Phospho-Numb (Ser276) Antibody
#2756	Numb (C29G11) Rabbit mAb
#2761	Numb (C44B4) Rabbit mAb
#2733	Numb Antibody
<b>New</b> #8136	OTX2 Antibody
<b>New</b> #8970	PAX5 (D19F8) XP® Rabbit mAb
<b>XP</b>	
#2468	PTCH1 (C53A3) Rabbit mAb
#2470	PTCH2 (G1191) Antibody

#2464	PTCH2 (L849) Antibody
#5442	RBPSUH Antibody
#3507	Sav1 Antibody
#3534	SFRP1 (D5A7) Rabbit mAb
#4690	SFRP1 Antibody
#2207	Shh (C9C5) Rabbit mAb
#2287	Shh Antibody
#2271	Shh/lhh Antibody
#9585	Slug (C19G7) Rabbit mAb
#9589	Slug (L40C6) Mouse mAb
#3879	Snail (C15D3) Rabbit mAb
#3895	Snail (L70G2) Mouse mAb
#4719	Snail (SN9H2) Rat mAb
#5931	SP1 Antibody
<b>New</b> #6725	SPARC (D10F10) Rabbit mAb
#5420	SPARC Antibody
#2520	SUFU (C54G2) Rabbit mAb
#2522	SUFU (C81H7) Rabbit mAb
#6978	TACE (D22H4) Rabbit mAb
#3976	TACE Antibody
#4883	TAZ (V386) Antibody
#2149	TAZ Antibody
#2206	TCF1 (C46C7) Rabbit mAb
#2203	TCF1 (C63D9) Rabbit mAb
#2883	TCF3 (D15G11) Rabbit mAb
#2569	TCF4 (C48H11) Rabbit mAb
#2565	TCF4 (C9B9) Rabbit mAb
#2953	TCF4 (L40C3) Mouse mAb

#3396	TCF7/ZEB1 (D80D3) Rabbit mAb
<b>New</b> #8526	TEAD1 Antibody
#4681	TLE1/2/3/4 Antibody
<b>New</b> #4747	TRA-2-54 (2J) Mouse mAb
#4394	β-TrCP (D13F10) Rabbit mAb
#5652	WIF1 (D50F9) Rabbit mAb
#2064	WIF1 Antibody
#2721	Wnt3a (C64F2) Rabbit mAb
#2391	Wnt3a Antibody
#2530	Wnt5a/b (C27E8) Rabbit mAb
#2392	Wnt5a Antibody
#5854	WTX (D38E5) Rabbit mAb
#4911	Phospho-YAP (Ser127) Antibody
<b>New</b> #8418	YAP/TAZ (D24E4) Rabbit mAb
#4912	YAP Antibody

## PathScan® Sandwich ELISA

#7308	PathScan® Total β-Catenin Sandwich ELISA Kit
#7309	PathScan® Total β-Catenin Sandwich ELISA Antibody Pair
#7194	PathScan® Cleaved Notch1 (Val1744) Sandwich ELISA Kit
#7245	PathScan® Total Notch1 Sandwich ELISA Kit

## SignalSilence® siRNA

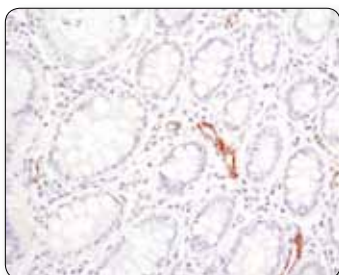
#6225	SignalSilence® β-Catenin siRNA I
#6387	SignalSilence® β-Catenin siRNA I (Mouse Specific)
#6238	SignalSilence® β-Catenin siRNA II
#6388	SignalSilence® β-Catenin siRNA II (Mouse Specific)
#6596	SignalSilence® Frizzled6 siRNA I
#6597	SignalSilence® Frizzled6 siRNA II
<b>New</b> #8650	SignalSilence® LRP6 siRNA I
<b>New</b> #9834	SignalSilence® LRP6 siRNA I (Mouse Specific)
<b>New</b> #8623	SignalSilence® LRP6 siRNA II
<b>New</b> #9848	SignalSilence® LRP6 siRNA II (Mouse Specific)

## Controls

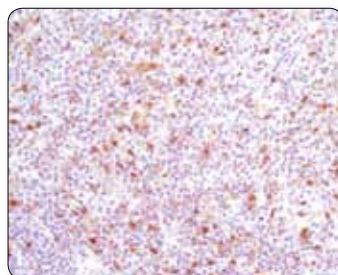
#1120	Phospho-β-Catenin (Ser33/37/Thr41) Blocking Peptide
#1130	Phospho-β-Catenin (Thr41/Ser45) Blocking Peptide
#1002	β-Catenin Blocking Peptide
#1016	LEF1 Blocking Peptide
#1007	TCF1 Blocking Peptide

## Notch Antibody Comparison

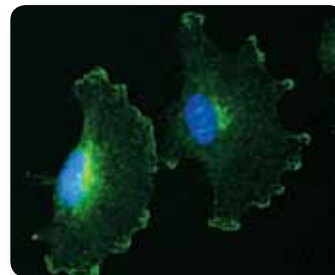
	Reactivity	WB	IP	IHC	Flow	IF
#4147 Cleaved Notch1 (Val1744) (D3B8) Rabbit mAb	H, M, R	++++	+++	-	-	-
#2421 Cleaved Notch1 (Val1744) Antibody	H, M, R, Mk	+++	++	-	-	-
#3608 Notch1 (D1E11) XP® Rabbit mAb	H, M, R	++++	-	++++	-	-
#4380 Notch1 (D6F11) XP® Rabbit mAb	H, M, R	++++	-	-	++++	++++
#3439 Notch1 (C37C7) Rabbit mAb	H	+++	+++	-	-	-
#3268 Notch1 (C44H11) Rabbit mAb	H, (M, R)	++	-	N/T	N/T	-
#3447 Notch1 (5B5) Rat mAb	H, M, R, B	++++	++	-	-	N/T
#4530 Notch2 (D67C8) XP® Rabbit mAb	H, R	++++	+++	-	-	+++
#5732 Notch2 (D76A6) XP® Rabbit mAb	H, M, R	++++	+++	N/T	+++	+++
#2420 Notch2 (8A1) Rabbit mAb	H	+++	+++	N/T	-	-
#5276 Notch3 (D11B8) Rabbit mAb	H	++++	++++	-	-	-
#3446 Notch3 (8G5) Rat mAb	H, R	++	++	-	N/T	-
#2889 Notch3 Antibody	H	++++	++	N/T	N/T	N/T
#2423 Notch4 (L5C5) Mouse mAb*	H	++	++	N/T	N/T	N/T



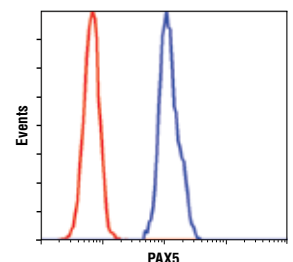
**SPARC (D10F10) Rabbit mAb #8725:**  
IHC analysis of paraffin-embedded human colon carcinoma using #8725.



**YAP/TAZ (D24E4) Rabbit mAb #8418:**  
IHC analysis of paraffin-embedded human lymphoma using #8418.



**Notch2 (D76A6) XP® Rabbit mAb #5732:**  
Confocal IF analysis of SNB19 cells using #5732 (green). Blue pseudocolor = DRAQ5® #4084 (fluorescent DNA dye).



**PAX5 (D19F8) XP® Rabbit mAb #8970:**  
Flow cytometric analysis of Jurkat (red) and Ramos (blue) cells using #8970.

## TGF-β/Smad Signaling

### Antibody Sampler Kits

#9963 Phospho-Smad Antibody Sampler Kit

### Antibodies

#4398 ACVR1 Antibody

**XP** #5601 βIG-H3 (D31B8) XP® Rabbit mAb

#2719 βIG-H3 Antibody

#4680 BMP4 (6B7) Mouse mAb

#4693 BMP7 Antibody

#6979 BMPR2 Antibody

#4335 Endoglin (D50G1) Rabbit mAb

#3290 Endoglin Antibody (Mouse Specific)

#4383 Gremlin Antibody

#3209 Mic-1 (L300) Antibody

#3249 Mic-1 (Y60) Antibody

#4518 MIS-R2 Antibody

#4080 Phospho-NEDD4L (Ser342) Antibody

#4013 NEDD4L Antibody

**New** #8739 PAX9 Antibody

#5753 Phospho-Smad1 (Ser206) (D40B7) Rabbit mAb

#9553 Phospho-Smad1 (Ser206) Antibody

#9516 Phospho-Smad1/5 (Ser463/465) (41D10) Rabbit mAb

#9576 Phospho-Smad1/5 (Ser463/465) (41D10) Rabbit mAb (Biotinylated)

#9511 Phospho-Smad1 (Ser463/465)/ Smad5 (Ser463/465)/ Smad8 (Ser426/428) Antibody

#3104 Phospho-Smad2 (Ser245/250/255) Antibody

**XP** #9510 Phospho-Smad2 (Ser465/467)/ Smad3 (Ser423/425) (D6G10) XP® Rabbit mAb

#3108 Phospho-Smad2 (Ser465/467) (138D4) Rabbit mAb

#3101 Phospho-Smad2 (Ser465/467) Antibody

#9520 Phospho-Smad3 (Ser423/425) (C25A9) Rabbit mAb

**XP** #6944 Smad1 (D59D7) XP® Rabbit mAb

#9743 Smad1 Antibody

**XP** #5339 Smad2 (D43B4) XP® Rabbit mAb

#3122 Smad2 (86F7) Rabbit mAb

#3103 Smad2 (L16D3) Mouse mAb

**New** **XP** #8685 Smad2/3 (D7G7) XP® Rabbit mAb

#5678 Smad2/3 Antibody

#3102 Smad2/3 Antibody

#9523 Smad3 (C67H9) Rabbit mAb

#9513 Smad3 Antibody

#9515 Smad4 Antibody

#9517 Smad5 Antibody

#9519 Smad6 Antibody

#2174 Smurf1 Antibody

#4973 SnoN Antibody

#3226 TAB1 (C25E9) Rabbit mAb

#3225 TAB1 Antibody

#8155 Phospho-TAB2 (Ser372) (D5A4) Rabbit mAb

#3745 TAB2 (C88H10) Rabbit mAb

#3744 TAB2 Antibody

#4508 Phospho-TAK1 (Thr184/187) (90C7) Rabbit mAb

#4537 Phospho-TAK1 (Thr184) Antibody

#4531 Phospho-TAK1 (Thr184/187) Antibody

#4536 Phospho-TAK1 (Thr187) Antibody

#9339 Phospho-TAK1 (Ser412) Antibody

#5206 TAK1 (D94D7) Rabbit mAb

#3504 TBK1/NAK (D1B4) Rabbit mAb

#3013 TBK1/NAK Antibody

#3709 TGF-β (56E4) Rabbit mAb

#3711 TGF-β Antibody

#3712 TGF-β Receptor I Antibody

#3713 TGF-β Receptor II (K105) Antibody

#5544 TGF-β Receptor III (D11G10) Rabbit mAb

#2519 TGF-β Receptor III Antibody

**New** #8972 TRIM33 Antibody

### PathScan® Sandwich ELISA

#7348 PathScan® Phospho-Smad2 (Ser465/467) Sandwich ELISA Kit

#7244 PathScan® Total Smad2 Sandwich ELISA Kit

### Growth Factors and Cytokines

#4697 Human BMP2

#8915 Human Transforming Growth Factor β1 (hTGF-β1)

#5154 Human Latent Transforming Growth Factor β1 (hLatent TGF-β1)

#5231 Mouse Transforming Growth Factor β1 (mTGF-β1)

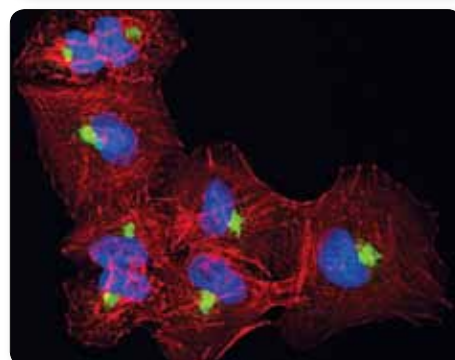
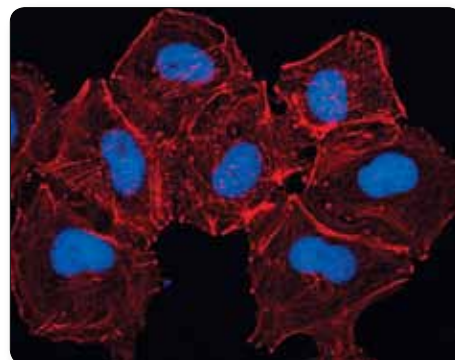
#8406 Human Transforming Growth Factor β2 (hTGF-β2)

#8425 Human Transforming Growth Factor β3 (hTGF-β3)

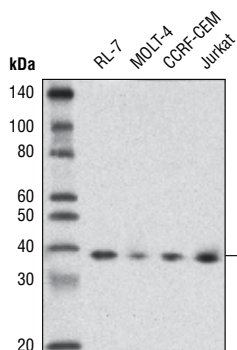
### SignalSilence® siRNA

#6223 SignalSilence® Smad1 siRNA I

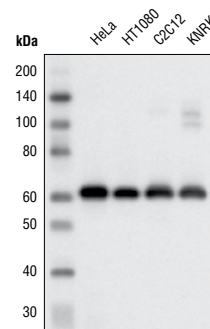
#6227 SignalSilence® Smad1 siRNA II



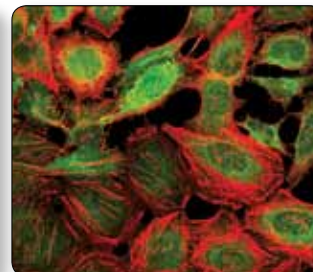
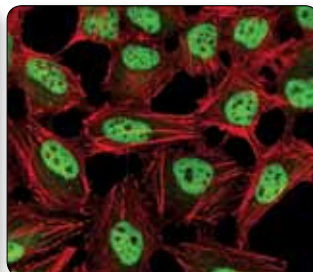
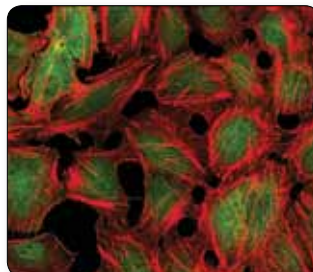
**βIG-H3 (D31B8) XP® Rabbit mAb #5601:** Confocal IF analysis of A549 cells, untreated (upper) or treated with hTGF-β1 #8915 (100 ng/ml, 24 hr; lower), using #5601 (green). Actin filaments were labeled with DY-554 phalloidin. Blue pseudocolor = DRAQ5® #4084 (fluorescent DNA dye).



**PAX9 Antibody #8739:** Western blot analysis of extracts from various cell lines using #8739.



**Smad2 (D43B4) XP® Rabbit mAb #5339:** Western blot analysis of extracts from various cell lines using #5339.



**Smad2/3 (D7G7) XP® Rabbit mAb #8685:** Confocal IF analysis of HeLa cells, serum starved (left), treated with hTGF-β3 #8425 (100 ng/ml, 30 min; center), or treated with hTGF-β3 #8425 and SB43152 (10 μg/mL, 1 hr; right), using #8685 (green). Actin filaments were labeled with DY-554 phalloidin (red).





USA Headquarters

Cell Signaling Technology, Inc.  
Tel: 978-867-2300  
E-mail: info@cellsignal.com  
www.cellsignal.com

International Subsidiaries

Cell Signaling Technology (China) Limited  
Tel: (86) 21-5835-6288  
E-mail: info@cst-c.com.cn  
www.cellsignal.com

Cell Signaling Technology Europe  
Tel: +31 (0)71 568 1060  
E-mail: info@cellsignal.eu  
www.cellsignal.com

Cell Signaling Technology Japan, K.K.  
Tel: 03-3295-16300  
E-mail: info@cstj.co.jp  
www.cstj.co.jp

Supporting Products

Antibody Sampler Kits

- #9962 Epitope Tag Antibody Sampler Kit
- #5142 Loading Control Antibody Sampler Kit
- #4670 Loading Control Antibody Sampler Kit (HRP Conjugate)

Secondary Antibodies and Detection Reagents

- #7071 Phototope®-HRP Western Blot Detection System, Anti-rabbit IgG, HRP-linked Antibody
- #7072 Phototope®-HRP Western Blot Detection System, Anti-mouse IgG, HRP-linked Antibody
- #4929 Albumin Antibody
- #5597 Anti-biotin (D5A7) Rabbit mAb
- #5571 Anti-biotin (D5A7) Rabbit mAb (HRP Conjugate)
- #7055 Anti-biotin, AP-linked Antibody
- #7075 Anti-biotin, HRP-linked Antibody
- New** #9863 Protein A Agarose Beads
- New** #8687 Protein A Magnetic Beads
- New** #8740 Protein G Magnetic Beads
- #7054 Anti-rabbit IgG, AP-linked Antibody
- #7074 Anti-rabbit IgG, HRP-linked Antibody
- #4412 Anti-rabbit IgG (H+L), F(ab')<sub>2</sub> Fragment (Alexa Fluor® 488 Conjugate)
- #4413 Anti-rabbit IgG (H+L), F(ab')<sub>2</sub> Fragment (Alexa Fluor® 555 Conjugate)
- #4414 Anti-rabbit IgG (H+L), F(ab')<sub>2</sub> Fragment (Alexa Fluor® 647 Conjugate)
- #6990 Anti-rabbit IgG F(ab')<sub>2</sub> Fragment (Sepharose Bead Conjugate)
- #5366 Anti-rabbit IgG (H+L) (DyLight® 680 Conjugate)
- #5151 Anti-rabbit IgG (H+L) (DyLight® 800 Conjugate)
- #3678 Mouse Anti-rabbit IgG (Conformation Specific) (L27A9) mAb
- New** #5127 Mouse Anti-rabbit IgG (Conformation Specific) (L27A9) mAb (HRP Conjugate)
- #3677 Mouse Anti-rabbit IgG (Light-Chain Specific) (L57A3) mAb
- #7056 Anti-mouse IgG, AP-linked Antibody
- #7076 Anti-mouse IgG, HRP-linked Antibody
- #4408 Anti-mouse IgG (H+L), F(ab')<sub>2</sub> Fragment (Alexa Fluor® 488 Conjugate)
- #4409 Anti-mouse IgG (H+L), F(ab')<sub>2</sub> Fragment (Alexa Fluor® 555 Conjugate)
- #4410 Anti-mouse IgG (H+L), F(ab')<sub>2</sub> Fragment (Alexa Fluor® 647 Conjugate)
- #5946 Anti-mouse IgG (H+L), F(ab')<sub>2</sub> Fragment (Sepharose Bead Conjugate)
- #5470 Anti-mouse IgG (H+L) (DyLight® 680 Conjugate)
- #5257 Anti-mouse IgG (H+L) (DyLight® 800 Conjugate)
- #7077 Anti-rat IgG, HRP-linked Antibody
- #4416 Anti-rat IgG (H+L), (Alexa Fluor® 488 Conjugate)
- #4417 Anti-rat IgG (H+L), (Alexa Fluor® 555 Conjugate)
- #4418 Anti-rat IgG (H+L), (Alexa Fluor® 647 Conjugate)
- #8125 SignalStain® Boost IHC Detection Reagent (HRP, Mouse)
- #8114 SignalStain® Boost IHC Detection Reagent (HRP, Rabbit)
- #8112 SignalStain® Antibody Diluent
- #3419 Streptavidin (Sepharose Bead Conjugate)
- #3999 Streptavidin-HRP

Buffers and Related Products

- #7003 20X LumiGLO® Reagent and 20X Peroxide
- #9998 BSA
- #9803 Cell Lysis Buffer (10X)
- #9852 Chaps Cell Extract Buffer (10X)
- New** #9871 20 mM Citrate pH 3.0 (Sterile)
- #4083 DAPI
- #4084 DRAQ5®
- New** #7406 DRAQ7™
- #4082 Hoechst #33342
- #5425 Normal Goat Serum
- #9999 Nonfat Dry Milk
- #7722 Blue Loading Buffer Pack
- #7723 Red Loading Buffer Pack
- New** #9872 Phosphate Buffered Saline (PBS-1X) pH7.2 (Sterile)
- #9808 Phosphate Buffered Saline (PBS-20X)
- #9809 Phosphate Buffered Saline with Tween 20 (PBST-20X)
- #5870 Phosphatase Inhibitor Cocktail (100X)
- #5871 Protease Inhibitor Cocktail (100X)
- #5872 Protease/Phosphatase Inhibitor Cocktail (100X)
- #7727 Biotinylated Protein Ladder Detection Pack
- #7720 Prestained Protein Marker, Broad Range (Premixed Format)
- #4087 Propidium Iodide (PI)/RNase Staining Solution
- #9806 RIPA Buffer (10X)
- #6883 SignalFire™ ECL Reagent
- #7002 STOP Solution
- #7004 TMB Substrate
- #4050 Tris-Glycine SDS Running Buffer (10X)
- #9997 Tris Buffered Saline with Tween 20 (TBST-10X)

Isotype Controls

- XP** #3900 Rabbit (DA1E) mAb IgG XP® Isotype Control
- XP** #2975 Rabbit (DA1E) mAb IgG XP® Isotype Control (Alexa Fluor® 488 Conjugate)
- New** #3969 Rabbit (DA1E) mAb IgG XP® Isotype Control (Alexa Fluor® 555 Conjugate)
- XP** #2985 Rabbit (DA1E) mAb IgG XP® Isotype Control (Alexa Fluor® 647 Conjugate)
- XP** #4096 Rabbit (DA1E) mAb IgG XP® Isotype Control (Biotinylated)
- XP** #3423 Rabbit (DA1E) mAb IgG XP® Isotype Control (Sepharose Bead Conjugate)
- XP** #8726 Rabbit (DA1E) mAb IgG XP® Isotype Control (Magnetic Bead Conjugate)
- XP** #5742 Rabbit (DA1E) mAb IgG XP® Isotype Control (PE Conjugate)
- #2729 Normal Rabbit IgG
- #4340 Rabbit IgG Isotype Control (Alexa Fluor® 488 Conjugate)
- #3452 Rabbit IgG Isotype Control (Alexa Fluor® 647 Conjugate)
- #3420 Mouse IgG (Sepharose Bead Conjugate)
- #5873 Mouse IgG (Magnetic Bead Conjugate)
- #5415 Mouse (G3A1) mAb IgG1 Isotype Control
- New** #9641 Mouse (G3A1) mAb IgG1 Isotype Control (Alexa Fluor® 555 Conjugate)
- #6899 Mouse (G3A1) mAb IgG1 Isotype Control (PE Conjugate)
- #4878 Mouse (MOPC-21) mAb IgG1 Isotype Control (Alexa Fluor® 488 Conjugate)
- #4843 Mouse (MOPC-21) mAb IgG1 Isotype control (Alexa Fluor® 647 Conjugate)
- #4097 Mouse (MOPC-21) mAb IgG1 Isotype Control (Biotinylated)

Epitope Tag Antibodies

- New** #8146 DYKDDDDK Tag (9A3) Mouse mAb (Binds to same epitope as Sigma's Anti-FLAG® M2 Antibody)
- #2368 DYKDDDDK Tag Antibody (Binds to same epitope as Sigma's Anti-FLAG® M2 Antibody)
- #2044 DYKDDDDK Tag Antibody (Binds to same epitope as Sigma's Anti-FLAG® M2 Antibody) (HRP Conjugate)
- #5407 DYKDDDDK Tag Antibody (Binds to same epitope as Sigma's Anti-FLAG® M2 Antibody) (Alexa Fluor® 488 Conjugate)
- #3768 DYKDDDDK Tag Antibody (Binds to same epitope as Sigma's Anti-FLAG® M2 Antibody) (Alexa Fluor® 555 Conjugate)
- New** #9696 DYKDDDDK Tag Antibody (Binds to same epitope as Sigma's Anti-FLAG® M2 Antibody) (Alexa Fluor® 594 Conjugate)
- #2908 DYKDDDDK Tag Antibody (Binds to same epitope as Sigma's Anti-FLAG® M2 Antibody) (Biotinylated)
- #2372 β-Gal (14B7) Mouse mAb
- XP** #2956 GFP (D5.1) XP® Rabbit mAb
- XP** #2912 GFP (D5.1) XP® Rabbit mAb (Biotinylated)
- XP** #2037 GFP (D5.1) XP® Rabbit mAb (HRP Conjugate)
- #2555 GFP Antibody
- #2955 GFP (4B10) Mouse mAb
- #9325 GSK-3β-Tag Antibody
- #2625 GST (91G1) Rabbit mAb
- #5746 GST (91G1) Rabbit mAb (Biotinylated)
- #5475 GST (91G1) Rabbit mAb (HRP Conjugate)
- #2624 GST (26H1) Mouse mAb
- #3368 GST (26H1) Mouse mAb (Alexa Fluor® 488 Conjugate)
- #3720 GST (26H1) Mouse mAb (Alexa Fluor® 555 Conjugate)
- #3445 GST (26H1) Mouse mAb (Alexa Fluor® 647 Conjugate)
- #3513 GST (26H1) Mouse mAb (Sepharose Bead Conjugate)
- #2622 GST Antibody
- #2448 Glu-Glu Tag Antibody
- #3724 HA-Tag (C29F4) Rabbit mAb
- #3956 HA-Tag (C29F4) Rabbit mAb (Sepharose Bead Conjugate)
- #5017 HA-Tag (C29F4) Rabbit mAb (Biotinylated)
- #2367 HA-Tag (6E2) Mouse mAb
- #2350 HA-Tag (6E2) Mouse mAb (Alexa Fluor® 488 Conjugate)
- #3444 HA-Tag (6E2) Mouse mAb (Alexa Fluor® 647 Conjugate)
- #2999 HA-Tag (6E2) Mouse mAb (HRP Conjugate)
- #2365 His-Tag Antibody
- #2366 His-Tag (27E8) Mouse mAb
- #4079 His-Tag (27E8) Mouse mAb (Sepharose Bead Conjugate)
- #2396 MBP (8G1) Mouse mAb
- #2278 Myc-Tag (71D10) Rabbit mAb
- #3946 Myc-Tag (71D10) Rabbit mAb (Biotinylated)
- #2272 Myc-Tag Antibody
- #2276 Myc-Tag (9B11) Mouse mAb
- #2279 Myc-Tag (9B11) Mouse mAb (Alexa Fluor® 488 Conjugate)
- #3756 Myc-Tag (9B11) Mouse mAb (Alexa Fluor® 555 Conjugate)
- New** #9483 Myc-Tag (9B11) Mouse mAb (Alexa Fluor® 594 Conjugate)
- #2233 Myc-Tag (9B11) Mouse mAb (Alexa Fluor® 647 Conjugate)
- #2040 Myc-Tag (9B11) Mouse mAb (HRP Conjugate)
- #3400 Myc-Tag (9B11) Mouse mAb (Sepharose Bead Conjugate)
- #5698 Myc-Tag (9B11) Mouse mAb (Magnetic Bead Conjugate)
- New** #3739 Myc-Tag (9B11) Mouse mAb (PE Conjugate)
- New** #8476 S-Tag Antibody
- #2547 Tat (8C2) Mouse mAb