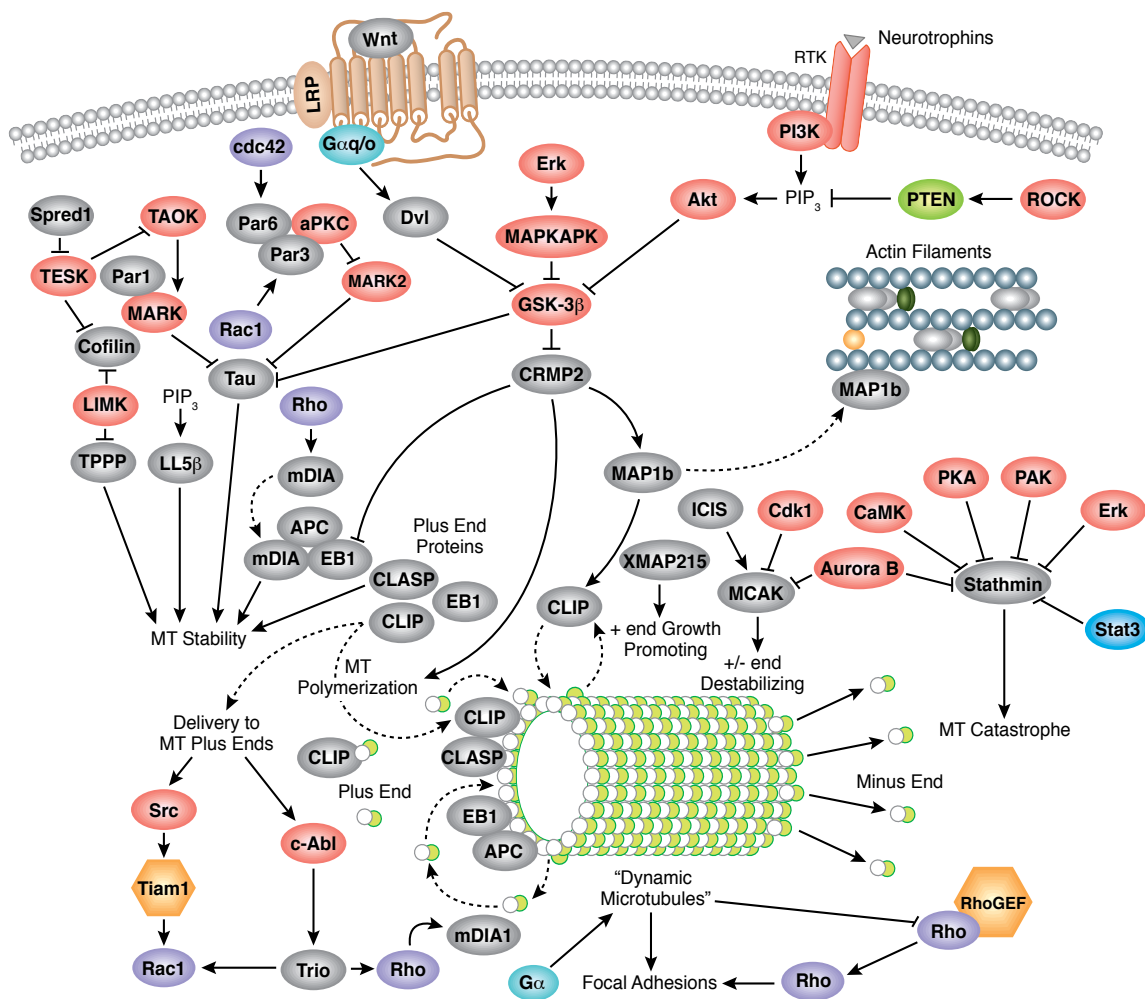


Antibodies and Related Reagents for Cytoskeletal Signaling

Product Pathways

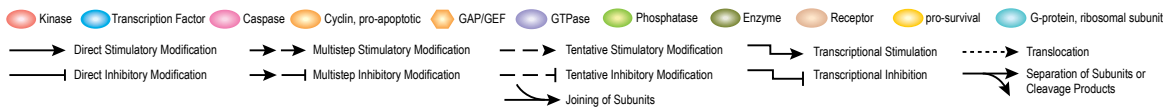
- Motif Antibodies
- Chromatin Regulation
- MAP Kinase Signaling
- Apoptosis and Autophagy
- PI3K / Akt Signaling
- Cellular Metabolism
- Translational Control
- Development and Differentiation
- Stem Cell and Lineage Markers
- Ca²⁺, cAMP, and Lipid Signaling
- Cell Cycle/Checkpoint Control
- NF-κB Signaling
- Lymphocyte Signaling
- Neuroscience
- Tyrosine Kinases and Docking Proteins
- Angiogenesis
- Nuclear Receptors and Phosphatases
- > Cytoskeletal Signaling
- Adhesion
- Protein Folding and Stability

Regulation of Microtubule Dynamics



© 2008 – 2010 Cell Signaling Technology, Inc.

For Research Use Only.
Not For Use In
Diagnostic Procedures.



Organelle Markers

Intercellular Junctions

- #3195 E-Cadherin (24E10) Rabbit mAb
- #3199 E-Cadherin (24E10) Rabbit mAb (Alexa Fluor® 488 Conjugate)
- #4065 E-Cadherin Antibody
- #2189 P-Cadherin (C13F9) Rabbit mAb
- #2130 P-Cadherin Antibody
- #2158 VE-Cadherin Antibody
- #3512 Connexin 43 Antibody
- #2847 ZO-2 Antibody

XP #3704 ZO-3 (D57G7) XP® Rabbit mAb

Focal Adhesions

- #3284 Phospho-FAK (Tyr925) Antibody
- XP** #8190 α -Parvin (D7F9) XP® Rabbit mAb
- #2541 Phospho-Paxillin (Tyr118) Antibody

Cytoskeleton

- #3971 Acetyl- α -Tubulin (Lys40) Antibody
- #2125 α -Tubulin (11H10) Rabbit mAb
- #2144 α -Tubulin Antibody
- #2148 α/β -Tubulin Antibody
- #2146 β -Tubulin Antibody
- #2128 β -Tubulin (9F3) Rabbit mAb
- #3623 β -Tubulin (9F3) Rabbit mAb (Alexa Fluor® 488 Conjugate)
- #2116 β -Tubulin (9F3) Rabbit mAb (Alexa Fluor® 555 Conjugate)
- #3624 β -Tubulin (9F3) Rabbit mAb (Alexa Fluor® 647 Conjugate)
- #4545 Pan-Keratin (C11) Mouse mAb
- #4523 Pan-Keratin (C11) Mouse mAb (Alexa Fluor® 488 Conjugate)
- #4528 Pan-Keratin (C11) Mouse mAb (Alexa Fluor® 647 Conjugate)
- #4548 Keratin 18 (DC10) Mouse mAb

Cytoplasm

- #2118 GAPDH (14C10) Rabbit mAb
- #9126 MEK1/2 (47E6) Rabbit mAb
- #4694 MEK1/2 (L38C12) Mouse mAb

Ribosomes

- #2403 Ribosomal Protein L7a (R225) Antibody
- #2579 Ribosomal Protein S3 Antibody
- #2217 S6 Ribosomal Protein (5G10) Rabbit mAb

Endoplasmic Reticulum

- #2433 Calnexin Antibody
- #2446 PDI Antibody

Golgi

- #2869 Syntaxin 6 (C34B2) Rabbit mAb
- #2417 Syntaxin 6 Antibody

Mitochondria

- #4850 COX IV (3E11) Rabbit mAb
- #4853 COX IV (3E11) Rabbit mAb (Alexa Fluor® 488 Conjugate)
- #4844 COX IV Antibody
- #4866 VDAC Antibody

Endosomes

- #3238 Caveolin-1 Antibody
- #2410 Clathrin Heavy Chain (P1663) Antibody
- #2411 EEA1 Antibody
- #2145 NSF Antibody
- #2143 Rab5 Antibody
- XP** #9367 Rab7 (D95F2) XP® Rabbit mAb
- XP** #5118 Rab9 (D52G8) XP® Rabbit mAb
- XP** #5589 Rab11 (D4F5) XP® Rabbit mAb
- #2417 Syntaxin 6 Antibody

Autophagosomes

- #2010 Atg12 Antibody (Human Specific)
- #2011 Atg12 Antibody (Mouse Specific)
- XP** #4599 LC3A (D50G8) XP® Rabbit mAb
- XP** #3868 LC3B (D11) XP® Rabbit mAb
- #2775 LC3B Antibody

Nucleus

- #2196 ESET (C1C12) Rabbit mAb
- #9715 Histone H3 Antibody
- #2718 Histone H2A.Z Antibody
- #2184 LSD1 (C69G12) Rabbit mAb
- #2139 LSD1 Antibody

Nuclear Envelope

- #2598 NUP98 (C39A3) Rabbit mAb
- #4777 Lamin A/C (4C11) Mouse mAb
- #2032 Lamin A/C Antibody

Centrioles

- #3258 PLK4 Antibody

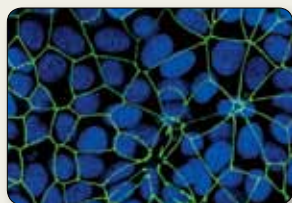
Centromeres

- #2187 Phospho-CENP-A (Ser7) Antibody
- #2186 CENP-A Antibody

Mitosis

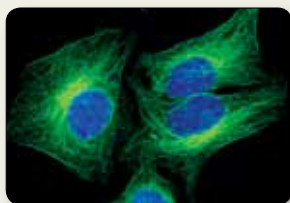
- #3079 Phospho-Aurora A (Thr288) (C39D8) Rabbit mAb
- #4718 Aurora A/AIK (1G4) Rabbit mAb
- #2187 Phospho-CENP-A (Ser7) Antibody
- #9706 Phospho-Histone H3 (Ser10) (6G3) Mouse mAb
- #9701 Phospho-Histone H3 (Ser10) Antibody
- #9708 Phospho-Histone H3 (Ser10) Antibody (Alexa Fluor® 488 Conjugate)

Intercellular Junctions



ZO-3 (D57G7) XP® Rabbit mAb #3704: Confocal IF analysis of MCF7 cells using #3704 (green). Blue pseudocolor = DRAQ5® #4084 (fluorescent DNA dye).

Cytoskeleton



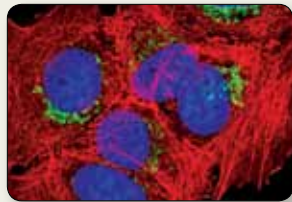
β -Tubulin (9F3) Rabbit mAb (Alexa Fluor® 488 Conjugate) #3623: Confocal IF analysis of HeLa cells using #3623 (green). Blue pseudocolor = DRAQ5® #4084 (fluorescent DNA dye).

Ribosomes



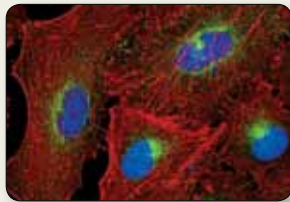
Ribosomal Protein S3 Antibody #2579: Confocal IF analysis of HeLa cells using #2579 (green). Actin filaments were labeled with Alexa Fluor® 555 phalloidin (red). Blue pseudocolor = DRAQ5® #4084 (fluorescent DNA dye).

Golgi



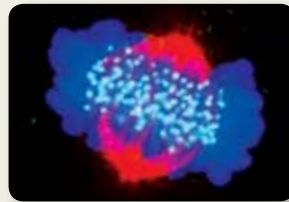
Syntaxin 6 (C34B2) Rabbit mAb #2869: Confocal IF analysis of MCF7 cells using #2869 (green). Actin filaments were labeled with DY-554 phalloidin (red). Blue pseudocolor = DRAQ5® #4084 (fluorescent DNA dye).

Endosomes

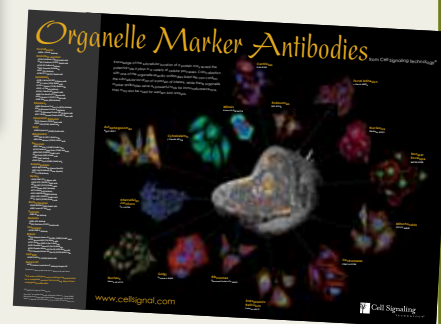


Rab11 (D4F5) XP® Rabbit mAb #5589: Confocal IF analysis of A549 cells using #5589 (green). Actin filaments were labeled with DY-554 phalloidin (red). Blue pseudocolor = DRAQ5® #4084 (fluorescent DNA dye).

Centromeres



Phospho-CENP-A (Ser7) Antibody #2187: Confocal IF analysis of a mitotic HeLa cell using #2187 (green) and β -Tubulin (9F3) Rabbit mAb (Alexa Fluor® 555 Conjugate) #2116 (red). Phospho-CENP-A signal is localized to bright spots in the metaphase plate. Blue pseudocolor = DRAQ5® #4084 (fluorescent DNA dye).



To order a copy of our Organelle Marker Antibodies poster, please visit www.cellsignal.com and click on the literature request icon at the top of the page.

Antibody Sampler Kits

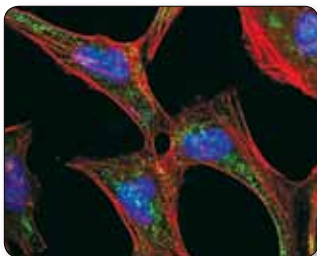
- #8355 Actin Nucleation Antibody Sampler Kit
- #9967 Actin Reorganization Antibody Sampler Kit
- #4753 Cellular Localization IF Antibody Sampler Kit
- #8354 Cofilin Activation Antibody Sampler Kit
- #9384 Cytokeratin Antibody Sampler Kit
- #9782 Epithelial-Mesenchymal Transition (EMT) Antibody Sampler Kit
- #4751 Intermediate Filaments Antibody Sampler Kit
- #9776 Myosin Light Chain 2 Antibody Sampler Kit
- #5144 Myosin II Isoform Antibody Sampler Kit
- #5143 MYPT1 Antibody Sampler Kit
- #4750 PAK 1/2/3 Antibody Sampler Kit
- #9385 Rab Family Antibody Sampler Kit
- #9968 Rho-GTPase Antibody Sampler Kit
- #5145 Vav Isoform Antibody Sampler Kit
- #9775 Vimentin Antibody Sampler Kit

Antibodies

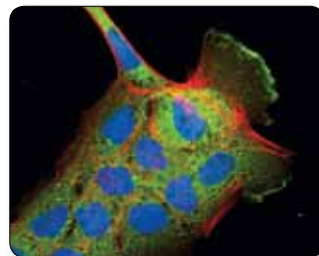
- #4970 β -Actin (13E5) Rabbit mAb
- #8844 β -Actin (13E5) Rabbit mAb (Alexa Fluor® 488 Conjugate)
- New** #9470 β -Actin (13E5) Rabbit mAb (Alexa Fluor® 594 Conjugate)
- #8584 β -Actin (13E5) Rabbit mAb (Alexa Fluor® 647 Conjugate)
- #5057 β -Actin (13E5) Rabbit mAb (Biotinylated)
- #5125 β -Actin (13E5) Rabbit mAb (HRP Conjugate)
- New** #8457 β -Actin (D6A8) Rabbit mAb
- #4967 β -Actin Antibody
- #3700 β -Actin (8H10D10) Mouse mAb
- #3134 α -Actinin Antibody
- #4151 ADAM9 (D64B5) Rabbit mAb
- #4897 Ajuba Antibody
- #3666 Annexin A7 Antibody
- #3843 Phospho-AP2M1 (Thr156) Antibody
- XP** #3858 APPL1 (D83H4) XP® Rabbit mAb
- #3276 APPL1 Antibody
- #5740 Arf6 (D12G6) Rabbit mAb
- #5617 Phospho-ARHGAP42 (Tyr376) (D45E9) Rabbit mAb
- #3128 ARP2 Antibody
- #4738 ARP3 Antibody
- #2980 Caldesmon-1 Antibody
- #3251 Phospho-Caveolin-1 (Tyr14) Antibody
- XP** #3267 Caveolin-1 (D46G3) XP® Rabbit mAb
- #3238 Caveolin-1 Antibody
- New** #8522 Caveolin-2 (D4A6) XP® Rabbit mAb
- XP**
- New** #5478 CD2AP (A599) Antibody

- #2135 CD2AP Antibody
- #2466 Cdc42 (11A11) Rabbit mAb
- #2462 Cdc42 Antibody
- #6954 Cdc42 Antibody
- #2091 Centrin-2 Antibody
- #4728 β 2-Chimerin (2E3) Rat mAb
- #4686 Chronophin/PDXP (C85E3) Rabbit mAb
- XP** #4796 Clathrin Heavy Chain (D3C6) XP® Rabbit mAb
- #2410 Clathrin Heavy Chain (P1663) Antibody
- #3313 Phospho-Cofilin (Ser3) (77G2) Rabbit mAb
- #3311 Phospho-Cofilin (Ser3) Antibody
- XP** #5175 Cofilin (D3F9) XP® Rabbit mAb
- #3318 Cofilin (D59) Antibody
- #3312 Cofilin Antibody
- #4515 Cool1/ β Pix Antibody
- #4573 Cool2/ α Pix (C23D2) Rabbit mAb
- #4569 Phospho-Cortactin (Tyr421) Antibody
- #3503 Cortactin (H222) Antibody
- #3502 Cortactin Antibody
- #4850 COX IV (3E11) Rabbit mAb
- #4853 COX IV (3E11) Rabbit mAb (Alexa Fluor® 488 Conjugate)
- New** #7561 COX IV (3E11) Rabbit mAb (Alexa Fluor® 647 Conjugate)
- #5247 COX IV (3E11) Rabbit mAb (HRP Conjugate)
- #6014 COX IV (3E11) Rabbit mAb (Biotinylated)
- New** #8582 Dab2 Antibody
- XP** #5332 Desmin (D93F5) XP® Rabbit mAb
- #4024 Desmin Antibody
- #5486 Diap1 Antibody
- #5474 Diap2 Antibody
- #4605 Phospho-Doublecortin (Ser297) Antibody
- #3453 Phospho-Doublecortin (Ser334) Antibody
- #4604 Doublecortin Antibody
- #3455 Phospho-DRP1 (Ser616) Antibody
- New** #6319 Phospho-DRP1 (Ser637) (D3A4) Rabbit mAb
- #4867 Phospho-DRP1 (Ser637) Antibody
- New** #8570 DRP1 (D6C7) Rabbit mAb
- #4565 Dynamin-I (3G4B6) Mouse mAb
- #2342 Dynamin I/II Antibody
- #2164 EB-1 (1A11/4) Mouse mAb
- #3288 EEA1 (C45B10) Rabbit mAb
- #2411 EEA1 Antibody
- #5430 Emerin (D9B3) Rabbit mAb
- #2660 Emerin (A212) Antibody
- #2659 Emerin (L12) Antibody
- #2428 EML4 Antibody
- #4155 EPAC1 (5D3) Mouse mAb
- #4156 EPAC2 (5B1) Mouse mAb
- #2929 EpCAM (VU1D9) Mouse mAb

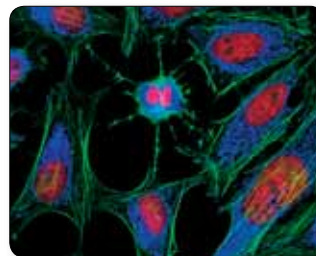
- #5198 EpCAM (VU1D9) Mouse mAb (Alexa Fluor® 488 Conjugate)
- #5488 EpCAM (VU1D9) Mouse mAb (Alexa Fluor® 555 Conjugate)
- New** #7319 EpCAM (VU1D9) Mouse mAb (Alexa Fluor® 594 Conjugate)
- #5447 EpCAM (VU1D9) Mouse mAb (Alexa Fluor® 647 Conjugate)
- New** #8995 EpCAM (VU1D9) Mouse mAb (PE Conjugate)
- #3599 EpCAM Antibody
- #2958 Erlin-1 Antibody
- #2959 Erlin-2 Antibody
- #5484 Phospho-Ezrin (Tyr353) (D66D3) Rabbit mAb
- #3144 Phospho-Ezrin (Tyr353) Antibody
- #3726 Phospho-Ezrin (Thr567)/Radixin (Thr564)/Moesin (Thr558) (48G2) Rabbit mAb (ELISA Specific)
- #3149 Phospho-Ezrin (Thr567)/Radixin (Thr564)/Moesin (Thr558) (41A3) Rabbit mAb
- #3141 Phospho-Ezrin (Thr567)/Radixin (Thr564)/Moesin (Thr558) Antibody
- #3145 Ezrin Antibody
- #3142 Ezrin/Radixin/Moesin Antibody
- #2639 Fibrillarin (C13C3) Rabbit mAb
- #2147 Fibrillarin (T298) Antibody
- #4761 Phospho-Filamin A (Ser#2152) Antibody
- #4762 Filamin A Antibody
- #3253 Flotillin-1 Antibody
- #3436 Flotillin-2 (C42A3) Rabbit mAb
- #3244 Flotillin-2 (L294) Antibody
- #2121 Cleaved α -Fodrin (Asp1185) Antibody
- #2122 α -Fodrin Antibody
- #4076 GEF-H1 (55B6) Rabbit mAb
- #4145 GEF-H1 Antibody
- New** #8090 Gelsolin Antibody
- #2919 GIT-1 Antibody
- New** #8072 GIT2 (D11B8) Rabbit mAb
- #6953 GIT2 Antibody
- #2296 GM130 Antibody
- New** #8576 GOPC (D10A12) Rabbit mAb
- #4646 GOPC Antibody
- #2293 IQGAP1 Antibody
- #4545 Pan-Keratin (C11) Mouse mAb
- #4523 Pan-Keratin (C11) Mouse mAb (Alexa Fluor® 488 Conjugate)
- #3478 Pan-Keratin (C11) Mouse mAb (Alexa Fluor® 555 Conjugate)
- #4528 Pan-Keratin (C11) Mouse mAb (Alexa Fluor® 647 Conjugate)
- #4279 Pan-Keratin (C11) Mouse mAb (Biotinylated)
- #5075 Pan-Keratin (C11) Mouse mAb (PE Conjugate)
- #4898 Keratin 7 (R458) Antibody



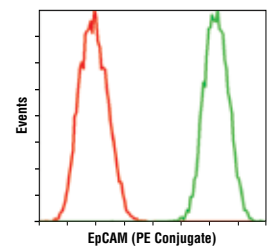
Caveolin-2 (D4A6) XP® Rabbit mAb #8522: Confocal IF analysis of HeLa cells using #8522 (green). Actin filaments were labeled with DY-554 phalloidin (red). Blue pseudocolor = DRAQ5® #4084 (fluorescent DNA dye).



CD2AP (A599) Antibody #5478: Confocal IF analysis of A-431 cells using #5478 (green). Actin filaments were labeled with DY-554 phalloidin (red). Blue pseudocolor = DRAQ5® #4084 (fluorescent DNA dye).



COX IV (3E11) Rabbit mAb (Alexa Fluor® 647 Conjugate) #7561: Confocal IF analysis of HeLa cells using #7561 (blue pseudocolor). Actin filaments were labeled with Alexa Fluor® 488 phalloidin (green). Red = Propidium iodide (PI)/RNase Staining Solution #4087.

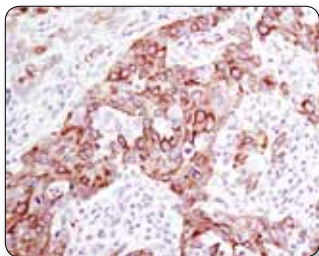


EpCAM (VU1D9) Mouse mAb (PE Conjugate) #8995: Flow cytometric analysis of unpermeabilized HT-29 cells using #8995 (green) compared to concentration-matched Mouse (G3A1) mAb IgG1 Isotype Control (PE Conjugate) #6899 (red).

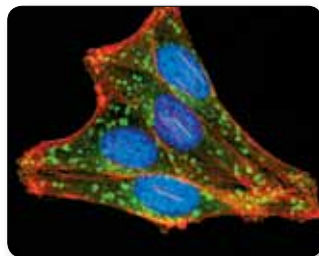
#3473 Keratin 7 Antibody
 #4546 Keratin 8/18 (C51) Mouse mAb
 #3519 Phospho-Keratin 17 (Ser44) Antibody
XP #4543 Keratin 17 (D73C7) XP[®] Rabbit mAb
XP #3984 Keratin 17/19 (D32D9) XP[®] Rabbit mAb
 #4548 Keratin 18 (DC10) Mouse mAb
 #4558 Keratin 19 (BA17) Mouse mAb
 #3479 Keratin 19 Antibody
 #2031 Cleaved Lamin A (Asp230) Antibody
 #2035 Cleaved Lamin A (Small Subunit) Antibody
 #2036 Cleaved Lamin A (Small Subunit) (30H5) Mouse mAb
 #2026 Phospho-Lamin A/C (Ser22) Antibody
 #2032 Lamin A/C Antibody
 #4777 Lamin A/C (4C11) Mouse mAb
New #8617 Lamin A/C (4C11) Mouse mAb (Alexa Fluor[®] 488 Conjugate)
New #9087 Lamin B1 Antibody
New #9622 Lamin B2 Antibody
 #3243 LAMP1 (C54H11) Rabbit mAb
 #5369 LAP2α (3A3) Mouse mAb
 #3841 Phospho-LIMK1 (Thr508)/LIMK2 (Thr505) Antibody
 #3842 LIMK1 Antibody
 #3845 LIMK2 (8C11) Rabbit mAb
 #3844 LIMK2 Antibody
 #3389 LPP (8B3A11) Mouse mAb
 #4836 Phospho-MARK Family (Activation Loop) Antibody
 #3319 MARK1 Antibody
 #9118 MARK2 Antibody
 #9311 MARK3 Antibody
 #4834 MARK4 Antibody
 #2089 MCF2/Dbi Antibody
 #6921 Mena (D33C1) Rabbit mAb
 #2075 Mena Antibody
 #9163 Phospho-Merlin (Ser518) Antibody
 #6995 Merlin (D1D8) Rabbit mAb
 #3150 Moesin (Q480) Antibody
 #3146 Moesin Antibody
 #3681 Phospho-Mst1 (Thr183)/Mst2 (Thr180) Antibody
 #3682 Mst1 Antibody
 #3952 Mst2 Antibody
 #3723 Mst3 Antibody
 #4062 Mst3b Antibody
 #3822 Mst4 Antibody
 #4386 MTSS1 (N747) Antibody
 #4385 MTSS1 (P549) Antibody
 #5026 Phospho-Myosin IIa (Ser1943) Antibody
 #3403 Myosin IIa Antibody
 #3404 Myosin IIb Antibody

#8189 Myosin IIc (D4A7) Rabbit mAb
 #3405 Myosin IIc Antibody
 #3402 Myosin Va Antibody
 #3674 Phospho-Myosin Light Chain 2 (Thr18/Ser19) Antibody
 #3671 Phospho-Myosin Light Chain 2 (Ser19) Antibody
 #3675 Phospho-Myosin Light Chain 2 (Ser19) Mouse mAb
 #3672 Myosin Light Chain 2 Antibody
 #3040 Phospho-MYPT1 (Ser507) Antibody
 #3048 Phospho-MYPT1 (Ser668) Antibody
 #5163 Phospho-MYPT1 (Thr696) Antibody
 #4563 Phospho-MYPT1 (Thr853) Antibody
 #2634 MYPT1 Antibody
 #3060 Phospho-Na,K-ATPase α1 (Tyr10) Antibody
 #4020 Phospho-Na,K-ATPase α1 (Ser16) Antibody
 #4006 Phospho-Na,K-ATPase α1 (Ser23) Antibody
 #3010 Na,K-ATPase Antibody
 #2319 NCK1 (15B9) Rabbit mAb
 #4760 Nestin (Rat-401) Mouse mAb
 #2837 Neurofilament-L (C28E10) Rabbit mAb
 #2835 Neurofilament-L (DA2) Mouse mAb
XP #3924 NSF (D31C7) XP[®] Rabbit mAb
 #2145 NSF Antibody
 #3053 NTF2 (5A3) Mouse mAb
 #2597 NUP98 (C3G10) Rabbit mAb
 #2598 NUP98 (C39A3) Rabbit mAb
 #2288 NUP98 (L205) Antibody
 #2292 NUP98 (P671) Antibody
 #3729 OSR1 Antibody
 #2606 Phospho-PAK1 (Ser144)/PAK2 (Ser141) Antibody
 #2605 Phospho-PAK1 (Ser199/204)/PAK2 (Ser192/197) Antibody
 #2601 Phospho-PAK1 (Thr423)/PAK2 (Thr402) Antibody
 #2602 PAK1 Antibody
 #2604 PAK1/2/3 Antibody
 #2607 Phospho-PAK2 (Ser20) Antibody
 #2615 PAK2 (C17A10) Rabbit mAb
 #2608 PAK2 Antibody
 #4825 PAK2 (3B5) Mouse mAb
 #2609 PAK3 Antibody
 #3241 Phospho-PAK4 (Ser474)/PAK5 (Ser602)/PAK6 (Ser560) Antibody
 #3242 PAK4 Antibody
 #6976 PAR2 (D61D5) Rabbit mAb
XP #8190 α-Parvin (D7F9) XP[®] Rabbit mAb
 #4026 α-Parvin Antibody
 #5213 PCM-1 (G2000) Antibody
 #5259 PCM-1 (Q15) Antibody
New #8144 PDLIM2 Antibody

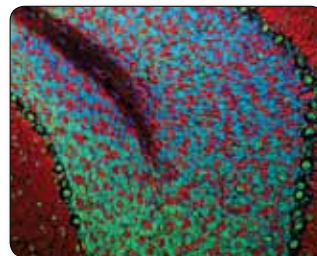
#3248 PKG-1 (C8A4) Rabbit mAb
 #3246 Profilin-1 (C56B8) Rabbit mAb
 #3237 Profilin-1 Antibody
 #3930 Rab3A Antibody
 #2167 Rab4 Antibody
 #3547 Rab5 (C8B1) Rabbit mAb
 #2143 Rab5 Antibody
 #4879 Rab6 Antibody
XP #9367 Rab7 (D95F2) XP[®] Rabbit mAb
 #2094 Rab7 Antibody
XP #6975 Rab8 (D22D8) XP[®] Rabbit mAb
 #4637 Rab8 Antibody
XP #5118 Rab9 (D52G8) XP[®] Rabbit mAb
 #5133 Rab9 (D22A6) Rabbit mAb
 #2095 Rab9 Antibody
XP #8127 Rab10 (D36C4) XP[®] Rabbit mAb
 #4262 Rab10 Antibody
XP #5589 Rab11 (D4F5) XP[®] Rabbit mAb
 #3539 Rab11 Antibody
 #2413 Rab11a Antibody
 #2414 Rab11b Antibody
 #4314 Rab25 Antibody
 #2461 Phospho-Rac1/cdc42 (Ser71) Antibody
 #2465 Rac1/2/3 Antibody
 #4651 Rac1/Cdc42 Antibody
 #4716 RACK1 Antibody
 #2636 Radixin (C4G7) Rabbit mAb
 #4799 RaIa (D6G8) Rabbit mAb
 #3526 RaIa Antibody
 #3523 RaIB Antibody
 #5739 RaIBP1 (D87H8) Rabbit mAb
 #3631 RaIBP1 (D623) Antibody
 #3630 RaIBP1 (I33) Antibody
 #9380 Phospho-RanBP3 (Ser58) Antibody
 #4462 Ran Antibody
 #2399 Rap1A/Rap1B (26B4) Rabbit mAb
 #4938 Rap1A/Rap1B Antibody
 #2326 Rap1B (36E1) Rabbit mAb
 #3334 RasGRP3 (C33A3) Rabbit mAb
 #8446 R-Ras Antibody
 #4210 Phospho-RCC1 (Ser11) Antibody
 #5134 RCC1 (D15H6) Rabbit mAb
 #3589 RCC1 Antibody
 #5104 RCC2 (D14F3) Rabbit mAb
 #3667 RCC2 Antibody
 #6884 Phospho-REPS1 (Ser709) Antibody
 #5637 REPS1 Antibody
 #2117 RhoA (67B9) Rabbit mAb



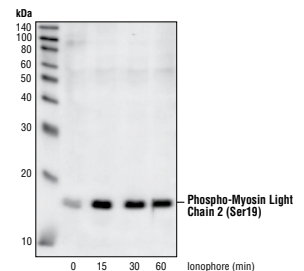
Keratin 17/19 (D32D9) XP[®] Rabbit mAb #3984: IHC analysis of paraffin-embedded human breast carcinoma using #3984.



Rab7 (D95F2) XP[®] Rabbit mAb #9367: Confocal IF analysis of SK-MEL-28 cells using #9367 (green). Actin filaments were labeled using DY-554 phalloidin (red). Blue pseudocolor = DRAQ5[®] #4084 (fluorescent DNA dye).



Lamin A/C (4C11) Mouse mAb (Alexa Fluor[®] 488 Conjugate) #8617: Confocal IF analysis of normal rat brain using #8617 (green). Actin filaments were labeled with DY-554 phalloidin (red). Blue pseudocolor = DRAQ5[®] #4084 (fluorescent DNA dye).



Phospho-Myosin Light Chain 2 (Ser19) Antibody #3671: Western blot analysis of extracts from HEK293 cells stimulated with ionophore A23187 for the indicated times using #3671.

- #2098 RhoB Antibody
- #3430 RhoC (D40E4) Rabbit mAb
- #3664 RhoE (4) Mouse mAb
- #2860 p190-A RhoGAP (C59F7) Rabbit mAb
- #2513 p190-A RhoGAP Antibody
- #2562 p190-B RhoGAP Antibody
- #2564 RhoGDI Antibody
- XP** #3669 p115 RhoGEF (D25D2) XP® Rabbit mAb
- #4035 ROCK1 (C8F7) Rabbit mAb
- #8236 ROCK2 Antibody
- New** #8162 Sec23A Antibody
- New** #9678 Sec24A Antibody
- New** #7427 Sec24B Antibody
- New** #9610 Sec24D Antibody
- #3757 SNIP/p140Cap Antibody
- #2281 SPAK Antibody
- #3353 Phospho-Stathmin (Ser16) Antibody
- #4191 Phospho-Stathmin (Ser38) (D19H10) Rabbit mAb
- #3426 Phospho-Stathmin (Ser38) Antibody
- #3352 Stathmin Antibody
- #2869 Syntaxin 6 (C34B2) Rabbit mAb
- #2417 Syntaxin 6 Antibody
- #5426 Phospho-Talin (Ser425) Antibody
- #4021 Talin-1 (C45F1) Rabbit mAb
- #5251 Phospho-TCTP (Ser46) Antibody
- #8441 TCTP Antibody
- #4655 TESK1 (D49D4) Rabbit mAb
- #3910 Tropomyosin-1 (D12H4) Rabbit mAb
- #3913 Tropomyosin-1/3 (D17B8) Rabbit mAb
- #4004 Phospho-Troponin I (Cardiac) (Ser23/24) Antibody
- #4002 Troponin I Antibody
- #5593 Troponin T (Cardiac) Antibody
- XP** #5335 Acetyl- α -Tubulin (Lys40) (D20G3) XP® Rabbit mAb
- #3971 Acetyl- α -Tubulin (Lys40) Antibody
- #2125 α -Tubulin (11H10) Rabbit mAb
- #5063 α -Tubulin (11H10) Rabbit mAb (Alexa Fluor® 488 Conjugate)
- #5059 α -Tubulin (11H10) Rabbit mAb (Alexa Fluor® 555 Conjugate)
- #5046 α -Tubulin (11H10) Rabbit mAb (Alexa Fluor® 647 Conjugate)
- #4285 α -Tubulin (11H10) Rabbit mAb (Biotinylated)
- #9099 α -Tubulin (11H10) Rabbit mAb (HRP Conjugate)
- #2144 α -Tubulin Antibody
- #3873 α -Tubulin (DM1A) Mouse mAb
- #8058 α -Tubulin (DM1A) Mouse mAb (Alexa Fluor® 488 Conjugate)
- #2148 α/β -Tubulin Antibody
- #2128 β -Tubulin (9F3) Rabbit mAb

- #3623 β -Tubulin (9F3) Rabbit mAb (Alexa Fluor® 488 Conjugate)
- #2116 β -Tubulin (9F3) Rabbit mAb (Alexa Fluor® 555 Conjugate)
- New** #7634 β -Tubulin (9F3) Rabbit mAb (Alexa Fluor® 594 Conjugate)
- #3624 β -Tubulin (9F3) Rabbit mAb (Alexa Fluor® 647 Conjugate)
- #5346 β -Tubulin (9F3) Rabbit mAb (HRP Conjugate)
- #6181 β -Tubulin (9F3) Rabbit mAb (Biotinylated)
- #5867 β -Tubulin (9F3) Rabbit mAb (PE Conjugate)
- #2146 β -Tubulin Antibody
- XP** #5666 β 3-Tubulin (D65A4) XP® Rabbit mAb
- XP** #5568 β 3-Tubulin (D71G9) XP® Rabbit mAb
- #4466 β 3-Tubulin (TU-20) Mouse mAb
- #5886 γ -Tubulin Antibody
- New** #8461 Twinfilin-1 Antibody
- #3111 Phospho-VASP (Ser157) Antibody
- #3114 Phospho-VASP (Ser239) Antibody
- #3132 VASP (9A2) Rabbit mAb
- #3120 VASP (A290) Antibody
- #3112 VASP Antibody
- #4657 Vav1 (D45G3) Rabbit mAb
- #2153 Vav1 (R775) Antibody
- #2502 Vav1 Antibody
- #2848 Vav2 (C64H2) Rabbit mAb
- #2398 Vav3 Antibody
- #2649 VCP (7F3) Rabbit mAb
- #2648 VCP Antibody
- #4661 VDAC (D73D12) Rabbit mAb
- #4866 VDAC Antibody
- #9412 VDAC2 Antibody
- #2369 Villin-1 (R814) Antibody
- #2393 Villin-1 Antibody
- #3877 Phospho-Vimentin (Ser56) Antibody
- #3878 Phospho-Vimentin (Ser82) Antibody
- XP** #5741 Vimentin (D21H3) XP® Rabbit mAb
- XP** #9854 Vimentin (D21H3) XP® Rabbit mAb (Alexa Fluor® 488 Conjugate)
- New** #9855 Vimentin (D21H3) XP® Rabbit mAb (Alexa Fluor® 555 Conjugate)
- XP** #9856 Vimentin (D21H3) XP® Rabbit mAb (Alexa Fluor® 647 Conjugate)
- #3932 Vimentin (R28) Antibody
- #3390 Vimentin (5G3F10) Mouse mAb
- #4650 Vinculin Antibody
- #4848 N-WASP (30D10) Rabbit mAb
- #4271 WASP (D9C8) Rabbit mAb
- #4860 WASP Antibody
- XP** #3659 WAVE-2 (D2C8) XP® Rabbit mAb
- #2806 WAVE-3 Antibody

PathScan® Sandwich ELISA

- #7880 PathScan® Total β -Actin Sandwich ELISA Kit
- #7881 PathScan® Total β -Actin Sandwich ELISA Antibody Pair
- #7944 PathScan® Total α -Tubulin Sandwich ELISA Kit
- #7945 PathScan® Total α -Tubulin Sandwich ELISA Antibody Pair
- #7204 PathScan® Acetyl- α -Tubulin Sandwich ELISA Kit

SignalSilence® siRNA

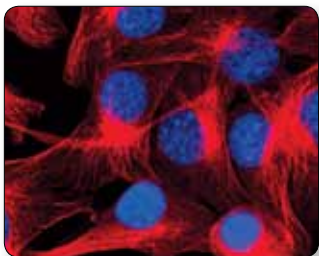
- #6267 SignalSilence® Cofilin siRNA I
- #6494 SignalSilence® Cofilin siRNA I (Mouse Specific)
- #6268 SignalSilence® Cofilin siRNA II
- #6506 SignalSilence® Cofilin siRNA II (Mouse Specific)
- #6475 SignalSilence® Ezrin siRNA I
- New** #6469 SignalSilence® Gelsolin siRNA I
- New** #6473 SignalSilence® Gelsolin siRNA II
- #6266 SignalSilence® MARK2 siRNA I
- #6499 SignalSilence® Moesin siRNA I
- #6361 SignalSilence® PAK1 siRNA I
- New** #8093 SignalSilence® PAK1 siRNA I (Mouse Specific)
- #6536 SignalSilence® PAK1 siRNA II
- #6467 SignalSilence® PAK2 siRNA I
- New** #6474 SignalSilence® PAK2 siRNA I (Mouse Specific)
- #6507 SignalSilence® PAK2 siRNA II
- #6437 SignalSilence® Rabex-5 siRNA I
- #6491 SignalSilence® Radixin siRNA I
- New** #7637 SignalSilence® VASP siRNA I
- New** #7658 SignalSilence® VASP siRNA II

Controls

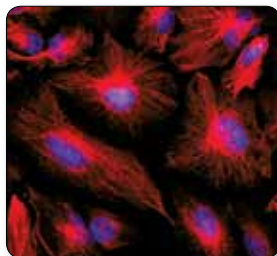
- #1025 β -Actin Blocking Peptide
- #1034 COX IV Blocking Peptide
- #1047 Phospho-Ezrin (Thr567)/Radixin (Thr564)/Moesin (Thr558) Blocking Peptide
- #1032 β -Tubulin Blocking Peptide

Chemical Modulators

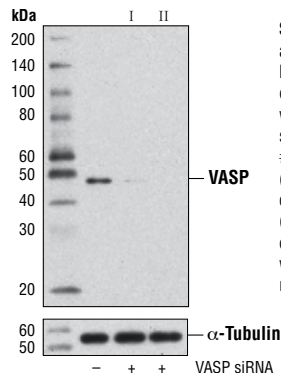
- #9972 Brefeldin A
- #9835 E-Cadherin (24E10) Rabbit mAb (Alexa Fluor® 647 Conjugate)
- #8477 Phospho-Catenin δ -1 (Ser252) Antibody



β -Tubulin (9F3) Rabbit mAb (Alexa Fluor® 594 Conjugate) #7634: Confocal IF analysis of C2C12 cells using #7634 (red). Blue pseudocolor = DRAQ5® #4084 (fluorescent DNA dye).



Vimentin (D21H3) XP® Rabbit mAb (Alexa Fluor® 555 Conjugate) #9855: Confocal IF analysis of SNB19 (left) or MCF7 (right) cells using #9855 (red). Blue pseudocolor = DRAQ5® #4084 (fluorescent DNA dye).



SignalSilence® VASP siRNA I #7637 and SignalSilence® VASP siRNA II #7658: Western blot analysis of extracts from HeLa cells, transfected with 100 nM SignalSilence® Control siRNA (Unconjugated) #6568 (-), #7637 (+) or #7658 (+), using VASP (9A2) Rabbit mAb #3132 (upper) or α -Tubulin (11H10) Rabbit mAb #2125 (lower). The VASP (9A2) Rabbit mAb confirms silencing of VASP expression, while the α -Tubulin (11H10) Rabbit mAb is used as a loading control.

USA Headquarters

Cell Signaling Technology, Inc.
Tel: 978-867-2300
E-mail: info@cellsignal.com
www.cellsignal.com

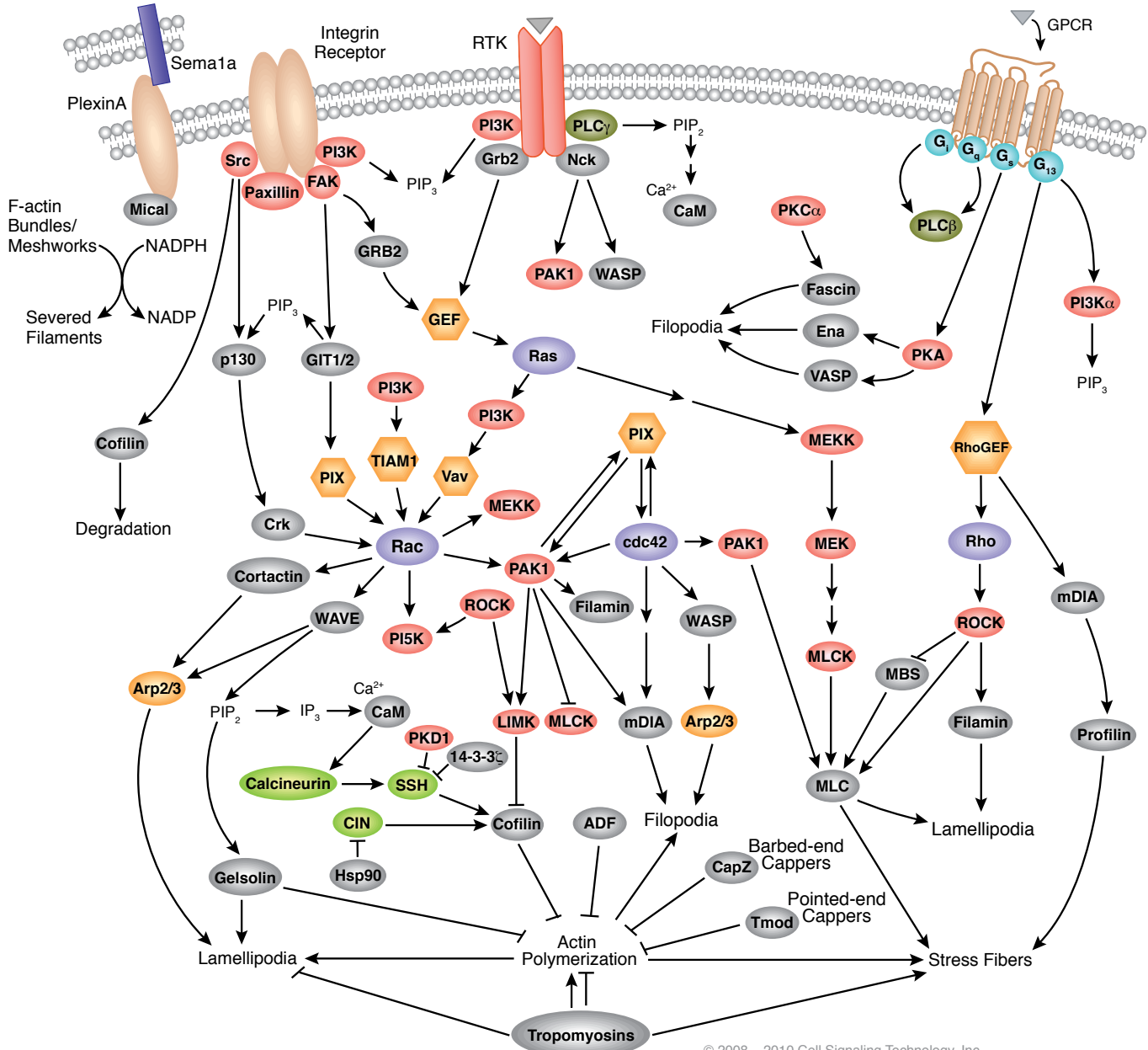
International Subsidiaries

Cell Signaling Technology (China) Limited
Tel: (86) 21-5835-6288
E-mail: info@cst-c.com.cn
www.cellsignal.com

Cell Signaling Technology Europe
Tel: +31 (0)71 568 1060
E-mail: info@cellsignal.eu
www.cellsignal.com

Cell Signaling Technology Japan, K.K.
Tel: 03-3295-16300
E-mail: info@cstj.co.jp
www.cstj.co.jp

Regulation of Actin Dynamics



© 2008 – 2010 Cell Signaling Technology, Inc.