

Antibodies and Related Reagents for Chromatin Regulation

Product Pathways

Motif Antibodies

>Chromatin Regulation

MAP Kinase Signaling

Apoptosis and Autophagy

PI3K / Akt Signaling

Cellular Metabolism

Translational Control

Development and Differentiation

Stem Cell and Lineage Markers

Ca²⁺, cAMP, and Lipid Signaling

Cell Cycle/ Checkpoint Control

NF-κB Signaling

Lymphocyte Signaling

Neuroscience

Tyrosine Kinases and Docking Proteins

Angiogenesis

Nuclear Receptors and Phosphatases

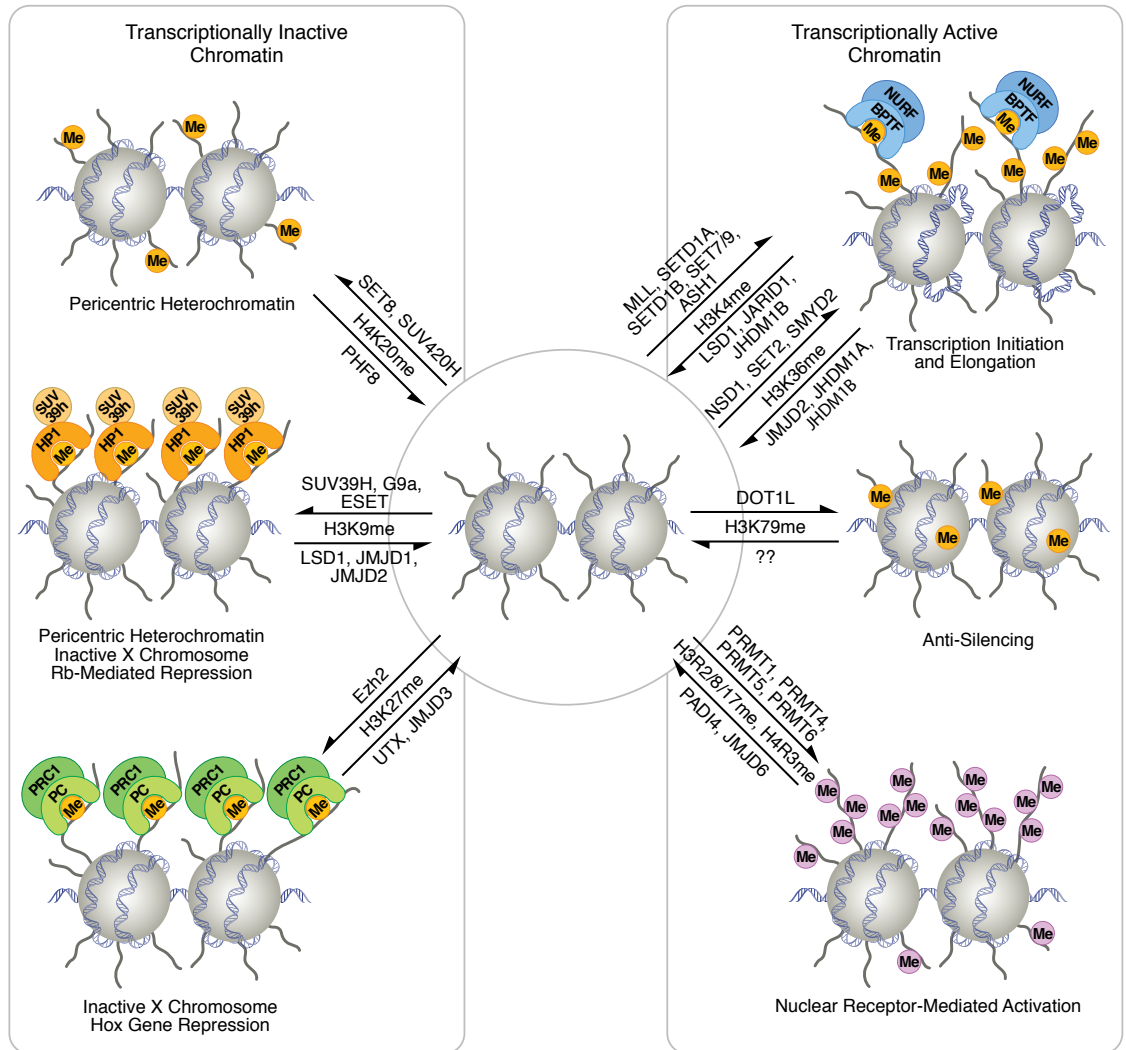
Cytoskeletal Signaling

Adhesion

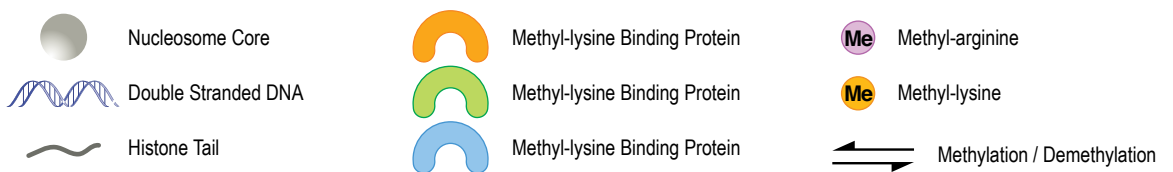
Protein Folding and Stability

For Research Use Only.
Not For Use In
Diagnostic Procedures.

Histone Methylation



© 2006 – 2010 Cell Signaling Technology, Inc.



ChIP-validated Antibodies and Primer Pairs

| | | Positive Control Primer | Negative Control Primer | | Positive Control Primer | Negative Control Primer |
|-----------|---|---------------------------------|----------------------------|-----------|---|---|
| | #9814 Acetylated-Lysine (Ac-K2-100) Rabbit mAb | #4471 (H), #5516 (H) | #4486 (H), #4493 (H) | | #5737 Tri-Methyl-Histone H4 (Lys20) (D84D2) Rabbit mAb | #5098 (H), #4486 (H) #5516 (H) |
| | #9441 Acetylated-Lysine Antibody | #5516 (H), #7014 (H), #7015 M | #4490 (H), #4493 (H) | | #2960 Histone H4 (L64C1) Mouse mAb (ChIP Formulated) | #4486 (H), #4490 (H) |
| XP | #6964 Bmi1 (D20B7) XP [®] Rabbit mAb | #7707 (H), #5517 (H) | #4486 (H) | | #4356 HSF1 Antibody | #5551 (H) #4486 (H) |
| | #5856 Bmi1 (D42B3) Rabbit mAb | #7707 (H), #5517 (H) | #4486 (H) | | #4299 IRF-4 (D43H10) Rabbit mAb | #5156 (H) #4486 (H) |
| | #9562 β-Catenin Antibody | #5111 (H) | #4486 (H) | | #4964 IRF-4 Antibody | #5156 (H) #4486 (H) |
| | #9581 β-Catenin Antibody (Amino-terminal Antigen) | #5111 (H) | #4486 (H) | | #5628 IRF-8 (D20D8) Rabbit mAb | #4486 (H) |
| | #9587 β-Catenin Antibody (Carboxy-terminal Antigen) | #5111 (H) | #4486 (H) | XP | #3619 MCM2 (D7G11) XP [®] Rabbit mAb | #5148 (H) #4486 (H) |
| | #4771 Acetyl-CBP (Lys1535)/p300 (Lys1499) Antibody | #4829 (H) | #4486 (H) | | #5415 Mouse (G3A1) mAb IgG1 Isotype Control | |
| | #7389 CBP (D6C5) Rabbit mAb | #4829 (H) | #4486 (H) | XP | #5605 c-Myc (D84C12) XP [®] Rabbit mAb | #4779 (H) #4486 (H) |
| | #7425 CBP (D9B6) Rabbit mAb | #4829 (H) | #4486 (H) | | #9402 c-Myc Antibody | #4779 (H) #4486 (H) |
| | #9198 Phospho-CREB (Ser133) (87G3) Rabbit mAb | #4829 (H) | #4486 (H) | XP | #5232 Nanog (D73G4) XP [®] Rabbit mAb (ChIP Formulated) | #4641 (H), #4649 (H) #4486 (H) |
| | #4276 Phospho-CREB (Ser133) (D1G6) Rabbit mAb | #4829 (H) | #4486 (H) | | #3580 Nanog Antibody | #4641 (H), #4649 (H) #4486 (H) |
| | #9197 CREB (48H2) Rabbit mAb | #4829 (H) | #4486 (H) | | #4373 NeuroD (D35G2) Rabbit mAb | #5549 (H) #4486 (H) |
| | #4820 CREB (D76D11) Rabbit mAb | #4829 (H) | #4486 (H) | | #3035 NF-κB1 p105/p50 Antibody | #5552 (H) #4486 (H) |
| XP | #3417 CTCF (D1A7) XP [®] Rabbit mAb | #5172 (H) | #4486 (H) | XP | #8242 NF-κB p65 (D14E12) XP [®] Rabbit mAb | #5552 (H) #4486 (H) |
| XP | #3418 CTCF (D31H2) XP [®] Rabbit mAb | #5172 (H) | #4486 (H) | | #6956 NF-κB p65 (L8F6) Mouse mAb | #5552 (H) #4486 (H) |
| | #2899 CTCF Antibody | #5172 (H) | #4486 (H) | | #5677 Oct-4A (C30A3C1) Rabbit mAb (ChIP Formulated) | #4641 (H), #4653 M, #4649 (H), #4659 M |
| | #3742 E2F-1 Antibody | #7001 (H) | #4486 (H) | | #2890 Oct-4A (C52G3) Rabbit mAb | #4641 (H), #4649 (H) #4486 (H) |
| | #4153 EGR1 (15F7) Rabbit mAb | #5549 (H) | #4486 (H) | | #2750 Oct-4 Antibody | #4641 (H), #4649 (H) #4486 (H) |
| | #4154 EGR1 (44D5) Rabbit mAb | #5549 (H) | #4486 (H) | | #9284 Phospho-p53 (Ser15) Antibody | #6449 (H) #4486 (H) |
| XP | #5246 Ezh2 (D2C9) XP [®] Rabbit mAb | #7707 (H), #5517 (H) | #4486 (H) | | #2527 p53 (7F5) Rabbit mAb | #6449 (H) #4486 (H) |
| | #4905 Ezh2 Antibody | #7707 (H), #5517 (H) | #4486 (H) | | #2524 p53 (1C12) Mouse mAb | #6449 (H) #4486 (H) |
| XP | #8240 Ubiquityl-Histone H2A (Lys119) (D27C4) XP [®] Rabbit mAb | #7707 (H), #5517 (H) | #4486 (H), #5516 (H) | | #9282 p53 Antibody | #6449 (H) #4486 (H) |
| XP | #5546 Ubiquityl-Histone H2B (Lys120) (D11) XP [®] Rabbit mAb | #5047 (H), #4478 (H) | #5037 (H), #4471 (H) | | #3378 PCAF (C14G9) Rabbit mAb | #4829 (H) #4486 (H) |
| XP | #5326 Mono-Methyl-Histone H3 (Lys4) (D1A9) XP [®] Rabbit mAb | #5047 (H) | #5037 (H) | | #2629 Rpb1 CTD (4H8) Mouse mAb | #4471 (H), #5516 (H) #4490 (H), #4493 (H) |
| | #9725 Di-Methyl-Histone H3 (Lys4) (C64G9) Rabbit mAb | #7014 (H), #7015 M | #4486 (H), #4490 (H) | | #2258 PU.1 (9G7) Rabbit mAb | #4486 (H) |
| | #9726 Di-Methyl-Histone H3 (Lys4) Antibody | #7014 (H), #7015 M | #4486 (H), #4490 (H) | XP | #2266 PU.1 Antibody | #4486 (H) |
| | #9751 Tri-Methyl-Histone H3 (Lys4) (C42D8) Rabbit mAb | #5516 (H), #7014 (H), #7015 M | #4486 (H), #4490 (H) | XP | #3900 Rabbit (DA1E) mAb IgG XP [®] Isotype Control | |
| | #9727 Tri-Methyl-Histone H3 (Lys4) Antibody | #5516 (H), #7014 (H), #7015 M | #4486 (H), #4490 (H) | | #2729 Normal Rabbit IgG | |
| | #5327 Di/Tri-Methyl-Histone H3 (Lys9) (6F12) Mouse mAb | #5098 (H), #4486 (H) | #5516 (H) | | #9313 Rb (D20) Rabbit mAb | #7001 (H) #4486 (H) |
| XP | #4473 Pan-Methyl-Histone H3 (Lys9) (D54) XP [®] Rabbit mAb | #5098 (H), #4486 (H), #5077 (H) | #4471 (H), #7014 (H) | | #9309 Rb (4H1) Mouse mAb | #7001 (H) #4486 (H) |
| | #4069 Pan-Methyl-Histone H3 (Lys9) Antibody | #5098 (H), #4486 (H), #5077 (H) | #4471 (H), #7014 (H) | XP | #5694 RING1B (D22F2) XP [®] Rabbit mAb | #7707 (H), #5517 (H) #4486 (H) |
| XP | #4658 Di-Methyl-Histone H3 (Lys9) (D85B4) XP [®] Rabbit mAb | #5098 (H), #4486 (H) | #4471 (H), #7014 (H) | XP | #6944 Smad1 (D59D7) XP [®] Rabbit mAb | #5139 (H) #4486 (H) |
| | #9753 Di-Methyl-Histone H3 (Lys9) Antibody | #5098 (H), #4486 (H) | #5516 (H), #7014 (H) | | #9743 Smad1 Antibody | #5139 (H) #4486 (H) |
| | #9733 Tri-Methyl-Histone H3 (Lys27) (C36B11) Rabbit mAb | #4490 (H), #4493 (H) | #7014 (H) | | #9511 Phospho-Smad1 (Ser463/465)/ Smad5 (Ser463/465)/ Smad8 (Ser426/428) Antibody | #5139 (H) #4486 (H) |
| | #9756 Tri-Methyl-Histone H3 (Lys27) Antibody | #4490 (H), #4493 (H) | #5516 (H), #7014 (H) | XP | #5339 Smad2 (D43B4) XP [®] Rabbit mAb | #5139 (H), #4669 (H) #4486 (H) |
| | #9649 Acetyl-Histone H3 (Lys9) (C5B11) Rabbit mAb | #5516 (H), #7014 (H), #7015 M | #4486 (H), #4490 (H) | XP | #8685 Smad2/3 (D7G7) XP [®] Rabbit mAb | #5139 (H), #4669 (H) #4486 (H) |
| | #9671 Acetyl-Histone H3 (Lys9) Antibody | #5516 (H), #7014 (H), #7015 M | #5098 (H), #4486 (H) | | #5678 Smad2/3 Antibody | #5139 (H), #4669 (H) #4486 (H) |
| | #9677 Acetyl-Histone H3 (Lys9/Lys14) Antibody | #7014 (H), #7015 M | #4486 (H), #4490 (H) | | #9520 Phospho-Smad3 (Ser423/425) (C25A9) Rabbit mAb | #5139 (H), #4669 (H) #4486 (H) |
| | #7627 Acetyl-Histone H3 (Lys14) (D4B9) Rabbit mAb | #7014 (H), #7015 M | #4486 (H), #4490 (H) | | #9523 Smad3 (C67H9) Rabbit mAb | #5139 (H), #4669 (H) #4486 (H) |
| | #5275 Acetyl-Histone H3 (Lys14) Antibody (ChIP Formulated) | #4478 (H), #7014 (H), #7015 M | #4486 (H), #4490 (H) | | #9515 Smad4 Antibody | #5139 (H), #4669 (H) #4486 (H) |
| | #9675 Acetyl-Histone H3 (Lys18) Antibody | #5516 (H), #7014 (H), #7015 M | #4486 (H), #4490 (H) | XP | #5024 Sox2 (D6D9) XP [®] Rabbit mAb (ChIP Formulated) | #4641 (H), #4649 (H) #4486 (H) |
| | #4353 Acetyl-Histone H3 (Lys27) Antibody | #5516 (H), #7014 (H), #7015 M | #5098 (H), #4486 (H) | | #2748 Sox2 Antibody | #4641 (H), #4653 M, #4649 (H), #4659 M |
| XP | #8173 Acetyl-Histone H3 (Lys27) (D5E4) XP [®] Rabbit mAb | #5516 (H), #7014 (H), #7015 M | #5098 (H), #4486 (H) | XP | #5147 SRF (D71A9) XP [®] Rabbit mAb | #4663 (H) #4486 (H) |
| XP | #9728 Di-Methyl-Histone H3 (Lys27) (D18C8) XP [®] Rabbit mAb | #5098 (H), #4490 (H) | #5516 (H), #7014 (H) | | #9167 Phospho-Stat1 (Tyr701) (58D6) Rabbit mAb | #5148 (H) #4486 (H) |
| XP | #5427 Di-Methyl-Histone H3 (Lys79) (D15E8) XP [®] Rabbit mAb | #5047 (H) | #5037 (H) | | #7649 Phospho-Stat1 (Tyr701) (D4A7) Rabbit mAb | #4486 (H), #5148 (H) |
| XP | #4909 Tri-Methyl-Histone H3 (Lys36) (D5A7) XP [®] Rabbit mAb | #5047 (H), #4478 (H) | #5037 (H), #4471 (H) | | #9171 Phospho-Stat1 (Tyr701) Antibody | #5148 (H) #4486 (H) |
| XP | #4620 Histone H3 (D2B12) XP [®] Rabbit mAb (ChIP Formulated) | #4486 (H), #7014 (H), #7015 M | | | #9177 Phospho-Stat1 (Ser727) Antibody | #5148 (H) #4486 (H) |
| | #2650 Histone H3 Antibody (ChIP Formulated) | #4486 (H), #7014 (H), #7015 M | | | #9172 Stat1 Antibody | #5148 (H) #4486 (H) |
| | #9672 Acetyl-Histone H4 (Lys5) Antibody | #7014 (H) | #4486 (H) | XP | #9145 Phospho-Stat3 (Tyr705) (D3A7) XP [®] Rabbit mAb | #4663 (H) #4486 (H) |
| | #2594 Acetyl-Histone H4 (Lys8) Antibody | #7014 (H), #7015 M | #5098 (H), #4486 (H) | | #9131 Phospho-Stat3 (Tyr705) Antibody | #4663 (H) #4486 (H) |
| | | | | | #9134 Phospho-Stat3 (Ser727) Antibody | #4663 (H) #4486 (H) |
| | | | | | #4904 Stat3 (79D7) Rabbit mAb | #4663 (H) #4486 (H) |
| | | | | | #9139 Stat3 (124H6) Mouse mAb | #4663 (H) #4486 (H) |
| | | | | | #9132 Stat3 Antibody | #4663 (H) #4486 (H) |
| | | | | | #5267 Phospho-Stat4 (Tyr693) Antibody | #4486 (H) |
| | | | | | #2653 Stat4 (C46B10) Rabbit mAb | #4486 (H) |
| | | | | | #9358 Stat5 (3H7) Rabbit mAb | #5131 M #7015 M |
| | | | | | #9351 Phospho-Stat5 (Tyr694) Antibody | #5131 M #7015 M |
| | | | | | #9363 Stat5 Antibody | #5131 M #7015 M |
| XP | #3737 SUZ12 (D39F6) XP [®] Rabbit mAb | #7707 (H), #5517 (H) | #4486 (H) | | #3737 SUZ12 (D39F6) XP [®] Rabbit mAb | #7707 (H), #5517 (H) #4486 (H) |
| | | | | | #2569 TCF4 (C48H11) Rabbit mAb | #5111 (H) #4486 (H) |
| | | | | | #2565 TCF4 (C9B9) Rabbit mAb | #5111 (H) #4486 (H) |

Antibody Sampler Kits

| | |
|------------|--|
| #9933 | Acetyl-Histone Antibody Sampler Kit |
| #9927 | Acetyl-Histone H3 Antibody Sampler Kit |
| #9847 | Methyl-Histone H3 Antibody Sampler Kit |
| #9849 | Phospho-Histone H3 (Mitotic Marker) Antibody Sampler Kit |
| #8346 | Acetyl-Histone H4 Antibody Sampler Kit |
| #9928 | Histone Deacetylase (HDAC) Antibody Sampler Kit |
| New | #8340 Jumonji Family Antibody Sampler Kit |
| New | #8349 NuRD Complex Antibody Sampler Kit |
| | #9788 Polycomb Group Antibody Sampler Kit |

PathScan® Multiplex IF Kits

| | |
|-------|--|
| #7851 | PathScan® Apoptosis and Proliferation Multiplex IF Kit |
|-------|--|

Antibodies

| | |
|------------|--|
| #2990 | ASF1A (C6E10) Rabbit mAb |
| #2902 | ASF1B (C70E2) Rabbit mAb |
| #2769 | ASF1B Antibody |
| XP | #5019 ASH2L (D93F6) XP® Rabbit mAb |
| XP | #6964 Bmi1 (D20B7) XP® Rabbit mAb |
| | #5856 Bmi1 (D42B3) Rabbit mAb |
| | #5855 Bmi1 (DC9) Mouse mAb |
| | #6890 BORIS Antibody |
| | #6889 BRM Antibody |
| | #5848 Brd2 (D89B4) Rabbit mAb |
| | #5292 BrdU (Bu20a) Mouse mAb |
| | #3508 Brg1 (A52) Antibody |
| | #3514 Brg1 (P680) Antibody |
| | #4771 Acetyl-CBP (Lys1535)/p300 (Lys1499) Antibody |
| New | #7389 CBP (D6C5) Rabbit mAb |
| New | #7425 CBP (D9B6) Rabbit mAb |
| | #2187 Phospho-CENP-A (Ser7) Antibody |
| | #2048 CENP-A (C51A7) Rabbit mAb (Mouse Specific; IF Preferred) |
| | #2047 CENP-A (C5H3) Rabbit mAb (Mouse Specific) |
| | #2186 CENP-A Antibody |
| XP | #5480 CHAF1A (D77D5) XP® Rabbit mAb |
| | #4170 CHD2 Antibody |
| | #4241 CHD3 Antibody |
| | #4245 CHD4 Antibody |
| New | #7656 CHD8 Antibody |
| | #5157 CLOCK (D45B10) Rabbit mAb |
| New | #8684 CBP1 (D2D6) Rabbit mAb |
| XP | #3417 CTCF (D1A7) XP® Rabbit mAb |
| XP | #3418 CTCF (D31H2) XP® Rabbit mAb |
| | #2899 CTCF Antibody |
| New | #8744 Cyclin T1 Antibody |
| | #4880 Phospho-DBC1 (Thr454) Antibody |
| | #5693 DBC1 Antibody |
| | #5857 DBC1 (3G4) Mouse mAb |
| XP | #5032 DNMT1 (D63A6) XP® Rabbit mAb |
| | #5119 DNMT1 (D59A4) Rabbit mAb |
| | #3598 DNMT3A (D23G1) Rabbit mAb |
| | #2160 DNMT3A Antibody |
| | #2196 ESET (C1C12) Rabbit mAb |
| XP | #5246 Ezh2 (D2C9) XP® Rabbit mAb |
| | #4905 Ezh2 Antibody |
| | #3147 Ezh2 (AC22) Mouse mAb |
| | #3306 G9a/EHMT2 (C6H3) Rabbit mAb |
| | #3305 GCN5L2 (C26A10) Rabbit mAb |
| | #2062 Histone Deacetylase 1 (HDAC1) Antibody |
| | #5356 HDAC1 (10E2) Mouse mAb |
| | #2540 HDAC2 Antibody |
| | #2545 HDAC2 Antibody (IP Preferred) |

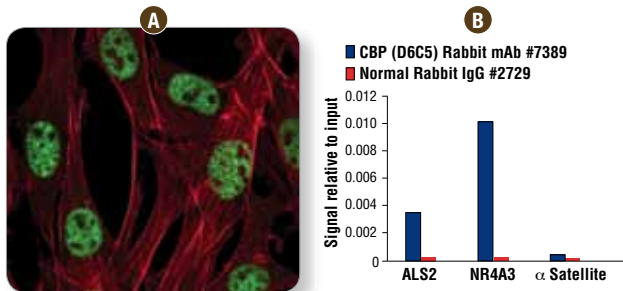
| | |
|------------|---|
| #5113 | HDAC2 (3F3) Mouse mAb |
| #3815 | Phospho-HDAC3 (Ser424) Antibody |
| #2632 | Histone Deacetylase 3 (HDAC3) Antibody |
| #3949 | HDAC3 (7G6C5) Mouse mAb |
| #3443 | Phospho-HDAC4 (Ser246)/HDAC5 (Ser259)/HDAC7 (Ser155) (D27B5) Rabbit mAb |
| #3424 | Phospho-HDAC4 (Ser632)/HDAC5 (Ser498)/HDAC7 (Ser486) Antibody |
| #7628 | HDAC4 (D15C3) Rabbit mAb |
| #2072 | Histone Deacetylase 4 (HDAC4) Antibody |
| #5392 | HDAC4 (4A3) Mouse mAb |
| #2082 | Histone Deacetylase 5 (HDAC5) Antibody |
| #7558 | HDAC6 (D2E5) Rabbit mAb |
| #7612 | HDAC6 (D21B10) Rabbit mAb |
| #2882 | Histone Deacetylase 7 (HDAC7) Antibody |
| #5695 | HECTH9 (AX8D1) Mouse mAb |
| New | #7998 HELLS Antibody |
| New | #9064 HEXIM1 Antibody |
| | #2576 Acetyl-Histone H2A (Lys5) Antibody |
| XP | #8240 Ubiquityl-Histone H2A (Lys119) (D27C4) XP® Rabbit mAb |
| | #2578 Histone H2A Antibody II |
| #3636 | Histone H2A (L88A6) Mouse mAb |
| #4160 | MacroH2A1.1 Antibody |
| #4827 | MacroH2A1.2 Antibody |
| #9718 | Phospho-Histone H2A.X (Ser139) (20E3) Rabbit mAb |
| #9719 | Phospho-Histone H2A.X (Ser139) (20E3) Rabbit mAb (Alexa Fluor® 488 Conjugate) |
| #8228 | Phospho-Histone H2A.X (Ser139) (20E3) Rabbit mAb (Alexa Fluor® 555 Conjugate) |
| #9720 | Phospho-Histone H2A.X (Ser139) (20E3) Rabbit mAb (Alexa Fluor® 647 Conjugate) |
| #4309 | Phospho-Histone H2A.X (Ser139) (20E3) Rabbit mAb (Biotinylated) |
| #5763 | Phospho-Histone H2A.X (Ser139) (20E3) Rabbit mAb (PE Conjugate) |
| #2577 | Phospho-Histone H2A.X (Ser139) Antibody |
| #5438 | Phospho-Histone H2A.X (Ser139/Tyr142) Antibody |
| XP | #7631 Histone H2A.X (D17A3) XP® Rabbit mAb |
| | #2595 Histone H2A.X Antibody |
| #2718 | Histone H2A.Z Antibody |
| #6959 | Phospho-Histone H2B (Ser14) (D67H2) Rabbit mAb |
| #2574 | Acetyl-Histone H2B (Lys5) Antibody |
| #5410 | Acetyl-Histone H2B (Lys12) Antibody |
| #5435 | Acetyl-Histone H2B (Lys15) Antibody |
| #2571 | Acetyl-Histone H2B (Lys20) Antibody |
| XP | #5546 Ubiquityl-Histone H2B (Lys120) (D11) XP® Rabbit mAb |
| #2722 | Histone H2B Antibody |
| #2934 | Histone H2B (53H3) Mouse mAb |
| New | #8135 Histone H2B (V119) Antibody |
| #7469 | Cleaved Histone H3 (Thr22) Antibody |
| #9649 | Acetyl-Histone H3 (Lys9) (C5B11) Rabbit mAb |
| #9683 | Acetyl-Histone H3 (Lys9) (C5B11) Rabbit mAb (Alexa Fluor® 488 Conjugate) |
| #5489 | Acetyl-Histone H3 (Lys9) (C5B11) Rabbit mAb (Alexa Fluor® 555 Conjugate) |
| #4484 | Acetyl-Histone H3 (Lys9) (C5B11) Rabbit mAb (Alexa Fluor® 647 Conjugate) |
| #9711 | Acetyl- and Phospho-Histone H3 (Lys9/Ser10) Antibody |
| #9671 | Acetyl-Histone H3 (Lys9) Antibody |
| #9677 | Acetyl-Histone H3 (Lys9/Lys14) Antibody |
| #7627 | Acetyl-Histone H3 (Lys14) (D4B9) Rabbit mAb |
| #4318 | Acetyl-Histone H3 (Lys14) Antibody |
| #5275 | Acetyl-Histone H3 (Lys14) Antibody (ChIP Formulated) |
| #9675 | Acetyl-Histone H3 (Lys18) Antibody |
| New | #8848 Acetyl-Histone H3 (Lys23) Antibody |
| New | #8173 Acetyl-Histone H3 (Lys27) (D5E4) XP® Rabbit mAb |
| XP | #4353 Acetyl-Histone H3 (Lys27) Antibody |

| | |
|------------|---|
| #4243 | Acetyl-Histone H3 (Lys56) Antibody |
| XP | #5326 Mono-Methyl-Histone H3 (Lys4) (D1A9) XP® Rabbit mAb |
| #9723 | Mono-Methyl-Histone H3 (Lys4) Antibody |
| #9725 | Di-Methyl-Histone H3 (Lys4) (C64G9) Rabbit mAb |
| #9726 | Di-Methyl-Histone H3 (Lys4) Antibody |
| #9751 | Tri-Methyl-Histone H3 (Lys4) (C42D8) Rabbit mAb |
| #9727 | Tri-Methyl-Histone H3 (Lys4) Antibody |
| XP | #4473 Pan-Methyl-Histone H3 (Lys9) (D54) XP® Rabbit mAb |
| XP | #6951 Pan-Methyl-Histone H3 (Lys9) (D54) XP® Rabbit mAb (HRP Conjugate) |
| | #4069 Pan-Methyl-Histone H3 (Lys9) Antibody |
| New | #7538 Mono-Methyl-Histone H3 (Lys9) Antibody |
| XP | #4658 Di-Methyl-Histone H3 (Lys9) (D85B4) XP® Rabbit mAb |
| #9753 | Di-Methyl-Histone H3 (Lys9) Antibody |
| #5327 | Di/Tri-Methyl-Histone H3 (Lys9) (6F12) Mouse mAb |
| #9754 | Tri-Methyl-Histone H3 (Lys9) Antibody |
| New | #7693 Mono-Methyl-Histone H3 (Lys27) Antibody |
| XP | #9728 Di-Methyl-Histone H3 (Lys27) (D18C8) XP® Rabbit mAb |
| #9755 | Di-Methyl-Histone H3 (Lys27) Antibody |
| #9733 | Tri-Methyl-Histone H3 (Lys27) (C36B11) Rabbit mAb |
| #9756 | Tri-Methyl-Histone H3 (Lys27) Antibody |
| #2901 | Di-Methyl-Histone H3 (Lys36) (C75H12) Rabbit mAb |
| #9758 | Di-Methyl-Histone H3 (Lys36) Antibody |
| XP | #4909 Tri-Methyl-Histone H3 (Lys36) (D5A7) XP® Rabbit mAb |
| #9763 | Tri-Methyl-Histone H3 (Lys36) Antibody |
| XP | #5427 Di-Methyl-Histone H3 (Lys79) (D15E8) XP® Rabbit mAb |
| #9757 | Di-Methyl-Histone H3 (Lys79) Antibody |
| #4260 | Tri-Methyl-Histone H3 (Lys79) Antibody |
| #9714 | Phospho-Histone H3 (Thr3) Antibody |
| XP | #3377 Phospho-Histone H3 (Ser10) (D2C8) XP® Rabbit mAb |
| XP | #3465 Phospho-Histone H3 (Ser10) (D2C8) XP® Rabbit mAb (Alexa Fluor® 488 Conjugate) |
| XP | #3475 Phospho-Histone H3 (Ser10) (D2C8) XP® Rabbit mAb (Alexa Fluor® 555 Conjugate) |
| New | #8481 Phospho-Histone H3 (Ser10) (D2C8) XP® Rabbit mAb (Alexa Fluor® 594 Conjugate) |
| XP | #3458 Phospho-Histone H3 (Ser10) (D2C8) XP® Rabbit mAb (Alexa Fluor® 647 Conjugate) |
| XP | #3642 Phospho-Histone H3 (Ser10) (D2C8) XP® Rabbit mAb (Biotinylated) |
| XP | #5764 Phospho-Histone H3 (Ser10) (D2C8) XP® Rabbit mAb (PE Conjugate) |
| #9701 | Phospho-Histone H3 (Ser10) Antibody |
| #9708 | Phospho-Histone H3 (Ser10) Antibody (Alexa Fluor® 488 Conjugate) |
| #9716 | Phospho-Histone H3 (Ser10) Antibody (Alexa Fluor® 647 Conjugate) |
| #9706 | Phospho-Histone H3 (Ser10) (6G3) Mouse mAb |
| #6886 | PhosphoPlus® Histone H3 (Ser10) In-Cell Duet (ICW Compatible) |
| #9767 | Phospho-Histone H3 (Thr11) (C2A6) Rabbit mAb |
| #9764 | Phospho-Histone H3 (Thr11) Antibody |
| #9713 | Phospho-Histone H3 (Ser28) Antibody |
| XP | #4499 Histone H3 (D1H2) XP® Rabbit mAb |
| XP | #5748 Histone H3 (D1H2) XP® Rabbit mAb (Biotinylated) |
| XP | #4620 Histone H3 (D2B12) XP® Rabbit mAb (ChIP Formulated) |
| #9717 | Histone H3 (3H1) Rabbit mAb |
| #5192 | Histone H3 (3H1) Rabbit mAb (HRP Conjugate) |
| #9715 | Histone H3 Antibody |
| #2650 | Histone H3 Antibody (ChIP Formulated) |
| #3638 | Histone H3 (96C10) Mouse mAb |
| #3680 | Histone H3 (96C10) Mouse mAb (IHC Formulated) |
| #9672 | Acetyl-Histone H4 (Lys5) Antibody |
| #2594 | Acetyl-Histone H4 (Lys8) Antibody |
| #9724 | Mono-Methyl-Histone H4 (Lys20) Antibody |
| #9759 | Di-Methyl-Histone H4 (Lys20) Antibody |
| #5737 | Tri-Methyl-Histone H4 (Lys20) (D84D2) Rabbit mAb |
| #2592 | Histone H4 Antibody |

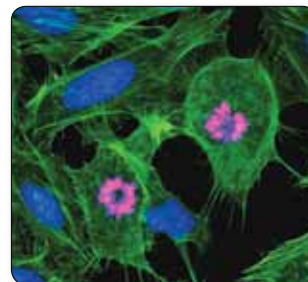
| | |
|---------------------|--|
| #2935 | Histone H4 (L64C1) Mouse mAb |
| #2960 | Histone H4 (L64C1) Mouse mAb (ChIP Formulated) |
| #6893 | HMGB1 (D3E5) Rabbit mAb |
| #3935 | HMGB1 Antibody |
| #5269 | HMGA2 Antibody |
| #5692 | HMGN1 Antibody |
| New XP #9437 | HMGN2 (D9B9) XP® Rabbit mAb |
| #2623 | HP1α (C7F11) Rabbit mAb |
| #2616 | HP1α Antibody |
| #2613 | HP1β Antibody |
| #2600 | Phospho-HP1γ (Ser83) Antibody |
| #2619 | HP1γ Antibody |
| XP #3876 | JARID1A (D28B10) XP® Rabbit mAb |
| #3273 | JARID1B Antibody |
| #5361 | JARID1C (D29B9) Rabbit mAb |
| #3314 | JMJD1B (C69G2) Rabbit mAb |
| #3100 | JMJD1B (C6D12) Rabbit mAb |
| #2621 | JMJD1B/JHDM2B Antibody |
| #5377 | JMJD1B (6A1-1F5) Mouse mAb |
| #5328 | JMJD2A (C37E5) Rabbit mAb |
| #3393 | JMJD2A (C70G6) Rabbit mAb |
| #2898 | JMJD2B Antibody |
| #3457 | JMJD3 Antibody |
| #5369 | LAP2α (3A3) Mouse mAb |
| #2088 | LEDGF (C57G11) Rabbit mAb |
| #2184 | LSD1 (C69G12) Rabbit mAb |

| | |
|-----------------|--|
| #2139 | LSD1 Antibody |
| #4064 | LSD1 (1B2E5) Mouse mAb |
| #4218 | LSD1 (1E5-H2) Mouse mAb |
| #9814 | Acetylated-Lysine (Ac-K2-100) Rabbit mAb |
| #9441 | Acetylated-Lysine Antibody |
| #9681 | Acetylated-Lysine Mouse mAb (Ac-K-103) |
| #3896 | MBD3 Antibody |
| XP #3456 | MeCP2 (D4F3) XP® Rabbit mAb |
| XP #6891 | Menin (D45B1) XP® Rabbit mAb |
| #2018 | MEP50 (D56B8) Rabbit mAb |
| #2828 | MEP50 (P328) Antibody |
| #2823 | MEP50 Antibody |
| XP #5647 | MTA1 (D40D1) XP® Rabbit mAb |
| #5646 | MTA1 (D17G10) Rabbit mAb |
| #5948 | NCoR1 Antibody |
| #4789 | Nucleomethylin Antibody |
| #3625 | NUT (C52B1) Rabbit mAb |
| #4736 | ORC2 (3G6) Rat mAb |
| #4737 | ORC6 (3A4) Rat mAb |
| #3378 | PCAF (C14G9) Rabbit mAb |
| #3497 | PHF2 (D45A2) Rabbit mAb |
| XP #3934 | PHF20 (D96F6) XP® Rabbit mAb |
| #2449 | PRMT1 (A33) Antibody |
| #2453 | PRMT1 (F339) Antibody |
| #3379 | PRMT4/CARM1 (C31G9) Rabbit mAb |
| #4438 | PRMT4/CARM1 Antibody |

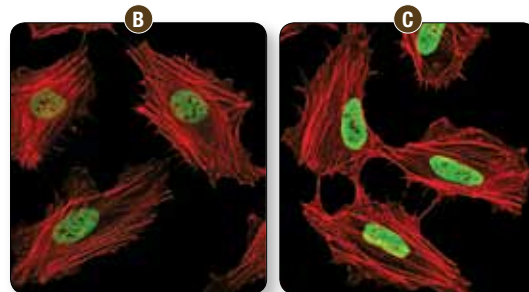
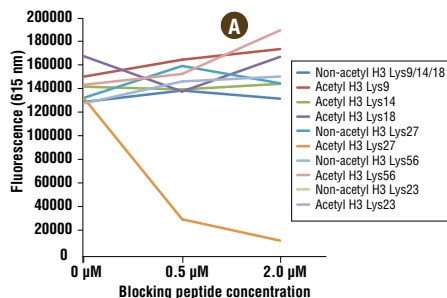
| | |
|------------------|--|
| #2252 | PRMT5/Skb1Hs Methyltransferase Antibody |
| #4321 | RAD21 (D213) Antibody |
| #4449 | RAD21 (L611) Antibody |
| #4633 | RBAP46/RBAP48 Antibody |
| #6882 | RBAP46 (V415) Antibody |
| #4522 | RBAP46 Antibody |
| #8037 | RBBP5 Antibody |
| #8959 | Reptin/RuvBL2 Antibody |
| #2820 | Ring1A Antibody |
| XP #5694 | RING1B (D22F2) XP® Rabbit mAb |
| #4735 | Phospho-Rpb1 CTD (Ser2/5) Antibody |
| #2629 | Rpb1 CTD (4H8) Mouse mAb |
| #4028 | Phospho-SATB1 (Ser47) Antibody |
| #8067 | SATB1 (D41G7) Rabbit mAb |
| #3650 | SATB1 (L745) Antibody |
| #3643 | SATB1 (P472) Antibody |
| #2825 | SET7/SET9 (C24B1) Rabbit mAb |
| #2813 | SET7/SET9 Antibody |
| #2996 | SET8 (C18B7) Rabbit mAb |
| #2327 | Phospho-SirT1 (Ser27) Antibody |
| #2314 | Phospho-SirT1 (Ser47) Antibody |
| #2496 | SirT1 (C14H4) Rabbit mAb |
| #3931 | SirT1 (D60E1) Rabbit mAb (Mouse Specific) |
| #2493 | SirT1 (D739) Antibody |
| #2310 | SirT1 Antibody |
| #2028 | SirT1 Antibody (Mouse Specific) |
| New #8469 | SirT3 (1F3) Mouse mAb |
| #2627 | SirT3 (C73E3) Rabbit mAb |
| #5490 | SirT3 (D22A3) Rabbit mAb |
| #2590 | SirT6 Antibody |
| New #9450 | SMARCA1 Antibody |
| New #9053 | SMARCC1/BAF155 Antibody |
| #4029 | Phospho-SMC1 (Ser360) Antibody |
| #6892 | SMC1 (8E6) Mouse mAb |
| #8720 | SMC2 (D11F9) Rabbit mAb |
| #5329 | SMC2 (D23C5) Rabbit mAb |
| #5394 | SMC2 (D91E3) Rabbit mAb |
| #5696 | SMC3 (D47B5) Rabbit mAb |
| #5547 | SMC4 (D14E2) Rabbit mAb |
| #9734 | SMYD2 (D14H7) Rabbit mAb |
| #4251 | SMYD2 Antibody |
| New #8745 | SNF5 (D9C2) Rabbit mAb |
| #2191 | SRC-1 (128E7) Rabbit mAb |
| #2126 | SRC-3 (5E11) Rabbit mAb |
| #2115 | SRC-3 (11B1) Mouse mAb |
| XP #5882 | STAG2 (D25A4) XP® Rabbit mAb |
| #4239 | STAG2 Antibody |
| #8729 | SUV39H1 (D11B6) Rabbit mAb |
| #2991 | SUV39H1 Histone Methyltransferase Antibody |
| XP #3737 | SUZ12 (D39F6) XP® Rabbit mAb |
| New #8515 | TBP Antibody |
| #5433 | TERF2IP (D9H4) Rabbit mAb |
| #4169 | TFIIB (2F6A3H4) Mouse mAb |
| #8080 | TFIIF-α Antibody |
| #7495 | TFAM Antibody |
| #5137 | TIAR Antibody |
| #4733 | Topoisomerase IIα Antibody |
| New #8972 | TRIM33 Antibody |
| #3966 | TRRAP (D2966) Antibody |
| #3967 | TRRAP (P2032) Antibody |
| New #8746 | XPB (2C6) Mouse mAb |
| #2152 | WSTF Antibody |



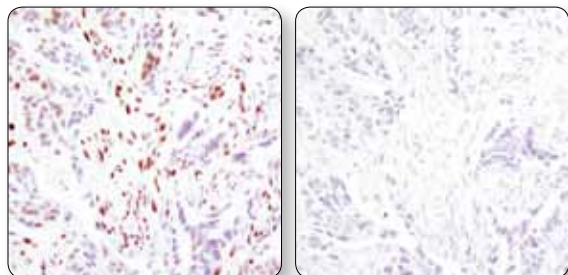
CBP (D6C5) Rabbit mAb #7389: Confocal IF analysis of HeLa cells (A) using #7389 (green). Actin filaments were labeled with DY-554 phalloidin (red). Chromatin immunoprecipitations were performed with cross-linked chromatin from 4×10^6 293 cells (B), treated with Forskolin #3828 (30 μ M, 1h) and either 20 μ l of #7389 or 2 μ l of Normal Rabbit IgG #2729, using SimpleChIP® Enzymatic Chromatin IP Kit (Magnetic Beads) #9003. The enriched DNA was quantified by real-time PCR using human ALS2 exon 1 primers, SimpleChIP® Human NR4A3 Promoter Primers #4829, and SimpleChIP® Human α Satellite Repeat Primers #4486. The amount of immunoprecipitated DNA in each sample is represented as signal relative to the total amount of input chromatin, which is equivalent to one.



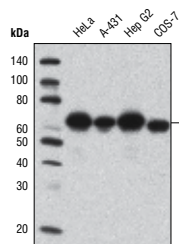
Phospho-Histone H3 (Ser10) (D2C8) XP® Rabbit mAb (Alexa Fluor® 594 Conjugate) #8481: Confocal IF analysis of HeLa cells using #8481 (red). Actin filaments were labeled with Alexa Fluor® 488 phalloidin (green). Blue pseudocolor = DRAQ5® #4084 (fluorescent DNA dye).



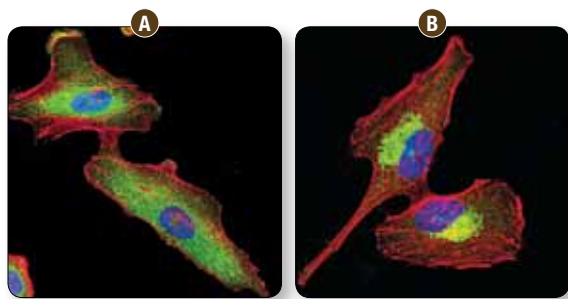
Acetyl-Histone H3 (Lys27) (D5E4) XP® Rabbit mAb #8173: Specificity of #8173 was determined by peptide ELISA (A). The graph depicts the binding of the antibody to pre-coated acetyl-histone H3 (Lys27) peptide in the presence of increasing concentrations of various competitor peptides. As shown, only the acetyl-histone H3 (Lys27) peptide competed away binding of the antibody. Confocal IF analysis of HeLa cells, untreated (B) or treated with Trichostatin A (TSA) #9950 (1 μ M, 4 hr; C), using #8173 (green). Actin filaments were labeled with DY-554 phalloidin (red).



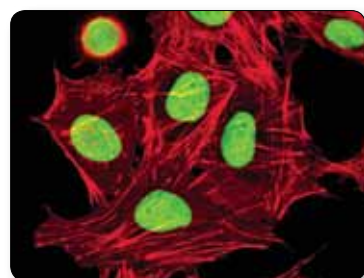
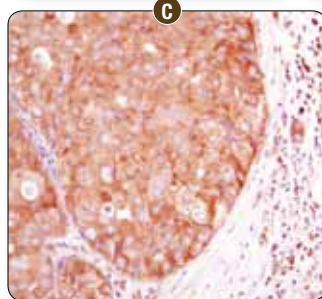
CtBP1 (D2D6) Rabbit mAb #8684: IHC analysis of paraffin-embedded human colon carcinoma using #8684 in the presence of control peptide (left) or antigen-specific peptide (right).



HEXIM1 Antibody #9064: Western blot analysis of extracts from various cell lines using #9064.



HDAC6 (D2E5) Rabbit mAb #7558: Confocal IF analysis of A549 cells, untreated (A) or treated with MG132 (5 μM, 24 hr; B), using #7558 (green). Actin filaments were labeled with DY-554 phalloidin (red). Blue pseudocolor = DRAQ5[®] #4084 (fluorescent DNA dye). IHC analysis of paraffin-embedded human breast carcinoma (C) using #7558.



HMG2 (D9B9) XP[®] Rabbit mAb #9437: Confocal IF analysis of HeLa cells using #9437 (green). Actin filaments were labeled with DY-554 phalloidin (red).

PathScan[®] Sandwich ELISA Kits

- #7233 PathScan[®] Acetyl-Histone H2A Sandwich ELISA Kit
- #7218 PathScan[®] Acetyl-Histone H2B (Lys5) Sandwich ELISA Kit
- #7222 PathScan[®] Acetyl-Histone H2B (Lys20) Sandwich ELISA Kit
- #7178 PathScan[®] Acetyl-Histone H2B Sandwich ELISA Kit
- #7232 PathScan[®] Acetylated Histone H3 Sandwich ELISA Kit
- #7121 PathScan[®] Acetyl-Histone H3 (Lys9) Sandwich ELISA Kit
- #7122 PathScan[®] Acetyl-Histone H3 (Lys18) Sandwich ELISA Kit
- #7123 PathScan[®] Mono-Methyl-Histone H3 (Lys4) Sandwich ELISA Kit
- #7124 PathScan[®] Di-Methyl-Histone H3 (Lys4) Sandwich ELISA Kit
- #7125 PathScan[®] Tri-Methyl-Histone H3 (Lys4) Sandwich ELISA Kit
- #7862 PathScan[®] Di-Methyl-Histone H3 (Lys9) Sandwich ELISA Kit
- #7864 PathScan[®] Pan-Methyl-Histone H3 (Lys9) Sandwich ELISA Kit
- #7866 PathScan[®] Tri-Methyl-Histone H3 (Lys27) Sandwich ELISA Kit
- #7868 PathScan[®] Di-Methyl-Histone H3 (Lys36) Sandwich ELISA Kit
- New** #7303 PathScan[®] Phospho-Histone H3 (Ser10) Chemiluminescent Sandwich ELISA Kit
- #7155 PathScan[®] Phospho-Histone H3 (Ser10) Sandwich ELISA Kit
- #7253 PathScan[®] Total Histone H3 Sandwich ELISA Kit
- #7224 PathScan[®] Acetyl-Histone H4 (Lys8) Sandwich ELISA Kit
- #7228 PathScan[®] Acetyl-Histone H4 (Lys12) Sandwich ELISA Kit
- #7238 PathScan[®] Acetyl-Histone H4 Sandwich ELISA Kit

SignalSilence[®] siRNA

- #6442 SignalSilence[®] Bmi1 siRNA I
- #6265 SignalSilence[®] CTCF siRNA I
- #6509 SignalSilence[®] Ezh2 siRNA I
- #7595 SignalSilence[®] HDAC4 siRNA I
- #7609 SignalSilence[®] HDAC4 siRNA II

Controls

- #1260 Phospho-Histone H2A.X (Ser139) Blocking Peptide
- #1010 Acetyl- and Phospho-Histone H3 (Lys9/Ser10) Blocking Peptide
- #1083 Acetyl-Histone H3 (Lys9) Blocking Peptide
- #1434 Di-Methyl-Histone H3 (Lys4) Blocking Peptide
- #1064 Tri-Methyl-Histone H3 (Lys4) Blocking Peptide
- #1000 Phospho-Histone H3 (Ser10) Blocking Peptide
- #1004 HP1α Blocking Peptide

Chemical Modulators

- #9950 Trichostatin A (TSA)

Chromatin Immunoprecipitation (ChIP) Kits

- #9002 SimpleChIP[®] Enzymatic Chromatin IP Kit (Agarose Beads)
- #9003 SimpleChIP[®] Enzymatic Chromatin IP Kit (Magnetic Beads)
- New** #9004 SimpleChIP[®] Plus Enzymatic Chromatin IP Kit (Agarose Beads)
- New** #9005 SimpleChIP[®] Plus Enzymatic Chromatin IP Kit (Magnetic Beads)
- #8980 SimpleChIP[®] Stem Cell Master Regulator Assay Kit
- #8982 SimpleChIP[®] Human Bivalent Promoter Assay Kit
- #8981 SimpleChIP[®] Mouse Bivalent Promoter Assay Kit
- #9007 ChIP-Grade Protein G Agarose Beads
- #9006 ChIP-Grade Protein G Magnetic Beads
- #7017 6-Tube Magnetic Separation Rack

SimpleChIP[®] Control PCR Primers

- #5047 SimpleChIP[®] Human γ-Actin Intron 3 Primers
- #5037 SimpleChIP[®] Human γ-Actin Promoter Primers
- #5098 SimpleChIP[®] Human AFM Intron 1 Primers
- New** #7269 SimpleChIP[®] Mouse AFM Intron 2 Primers
- New** #8973 SimpleChIP[®] Human Axin2 Intron 1 Primers
- #5111 SimpleChIP[®] Human CaMK2D Intron 3 Primers
- #4669 SimpleChIP[®] Human CDKN1A Intron 1 Primers
- #6449 SimpleChIP[®] Human CDKN1A Promoter Primers
- #5131 SimpleChIP[®] Mouse CIS Intron 1 Primers
- #5549 SimpleChIP[®] Human EGR1 Promoter Primers
- #4663 SimpleChIP[®] Human c-Fos Promoter Primers
- #5516 SimpleChIP[®] Human GAPDH Exon 1 Primers
- #4478 SimpleChIP[®] Human GAPDH Intron 2 Primers
- #8986 SimpleChIP[®] Mouse GAPDH Intron 2 Primers
- #4471 SimpleChIP[®] Human GAPDH Promoter Primers
- #5550 SimpleChIP[®] Human GATA6 Promoter Primers
- New** #7707 SimpleChIP[®] Human HoxA1 Intron 1 Primers
- New** #7341 SimpleChIP[®] Mouse HoxA1 Promoter Primers
- #5517 SimpleChIP[®] Human HoxA2 Promoter Primers
- New** #7429 SimpleChIP[®] Mouse HoxD10 Exon 1 Primers
- #5551 SimpleChIP[®] Human HSPA6 Promoter Primers
- #5139 SimpleChIP[®] Human ID1 Promoter Primers
- #5172 SimpleChIP[®] Human H19/Igf2 Imprinting Control Region Primers
- #5552 SimpleChIP[®] Human IκBα Promoter Primers
- #9013 SimpleChIP[®] Human MS4A7 Promoter Primers
- #4490 SimpleChIP[®] Human MyoD1 Exon 1 Primers
- #4493 SimpleChIP[®] Human MYT-1 Exon 1 Primers
- #8985 SimpleChIP[®] Mouse MYT-1 Promoter Primers
- #4779 SimpleChIP[®] Human NPM1 Intron 1 Primers
- #4829 SimpleChIP[®] Human NR4A3 Promoter Primers
- #4641 SimpleChIP[®] Human Oct-4 Promoter Primers
- #4653 SimpleChIP[®] Mouse Oct-4 Promoter Primers
- #8984 SimpleChIP[®] Mouse PITX3 Intron 1 Primers
- #9014 SimpleChIP[®] Human PRF1 Promoter Primers
- #7014 SimpleChIP[®] Human RPL30 Exon 3 Primers
- #7015 SimpleChIP[®] Mouse RPL30 Intron 2 Primers
- #5077 SimpleChIP[®] Human Sat2 Repeat Element Primers
- #4649 SimpleChIP[®] Human Sox2 Promoter Primers
- #5156 SimpleChIP[®] Human SUB1 Promoter Primers
- #5148 SimpleChIP[®] Human TAP1 Promoter Primers
- #7001 SimpleChIP[®] Human Timeless Intron 1 Primers
- #4486 SimpleChIP[®] Human α Satellite Repeat Primers
- #4659 SimpleChIP[®] Mouse XIST Intron 1 Primers

USA Headquarters

Cell Signaling Technology, Inc.
Tel: 978-867-2300
E-mail: info@cellsignal.com
www.cellsignal.com

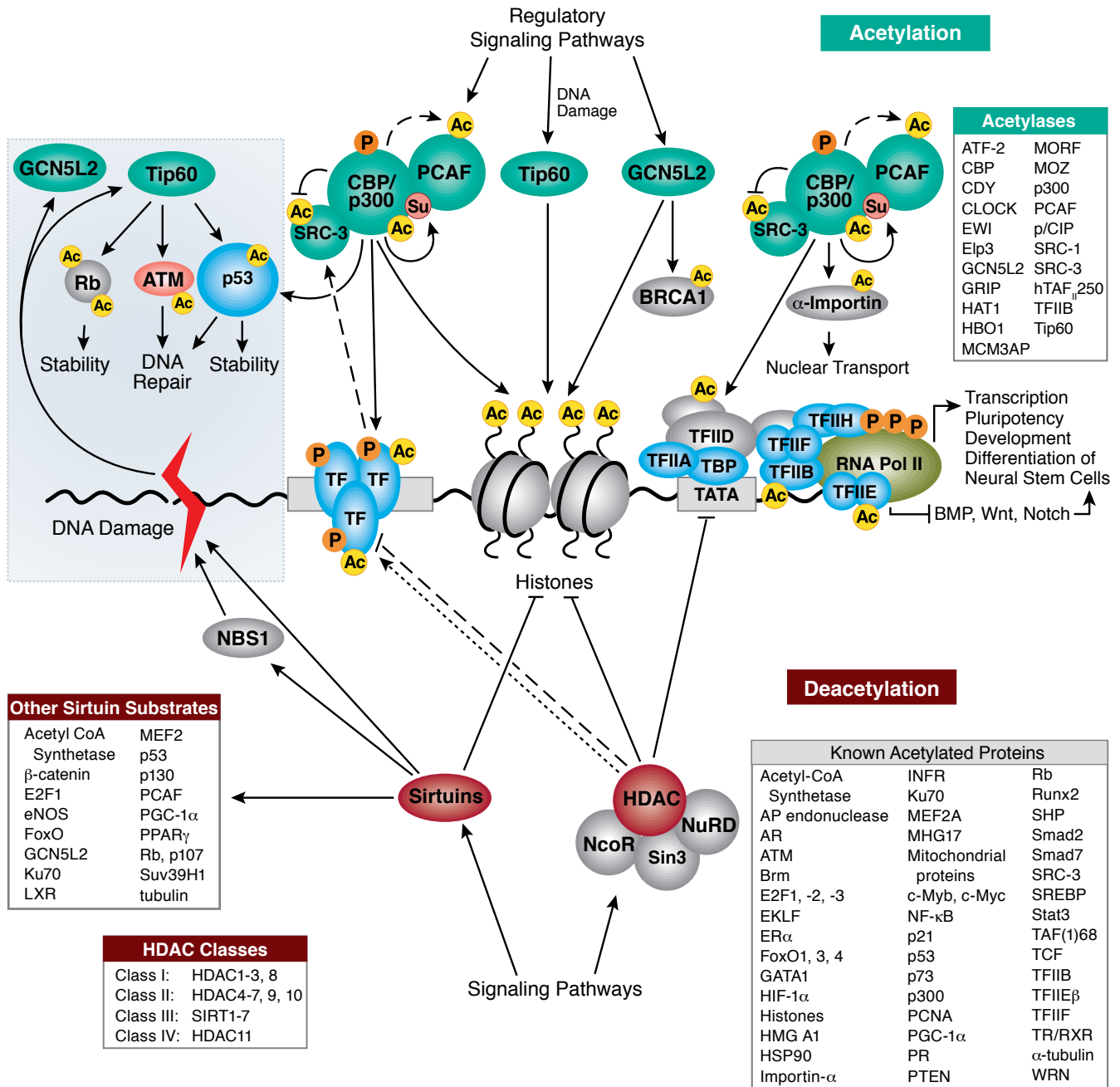
International Subsidiaries

Cell Signaling Technology (China) Limited
Tel: (86) 21-5835-6288
E-mail: info@cst-c.com.cn
www.cellsignal.com

Cell Signaling Technology Europe
Tel: +31 (0)71 568 1060
E-mail: info@cellsignal.eu
www.cellsignal.com

Cell Signaling Technology Japan, K.K.
Tel: 03-3295-16300
E-mail: info@cstj.co.jp
www.cstj.co.jp

Protein Acetylation



© 2002 – 2011 Cell Signaling Technology, Inc.