

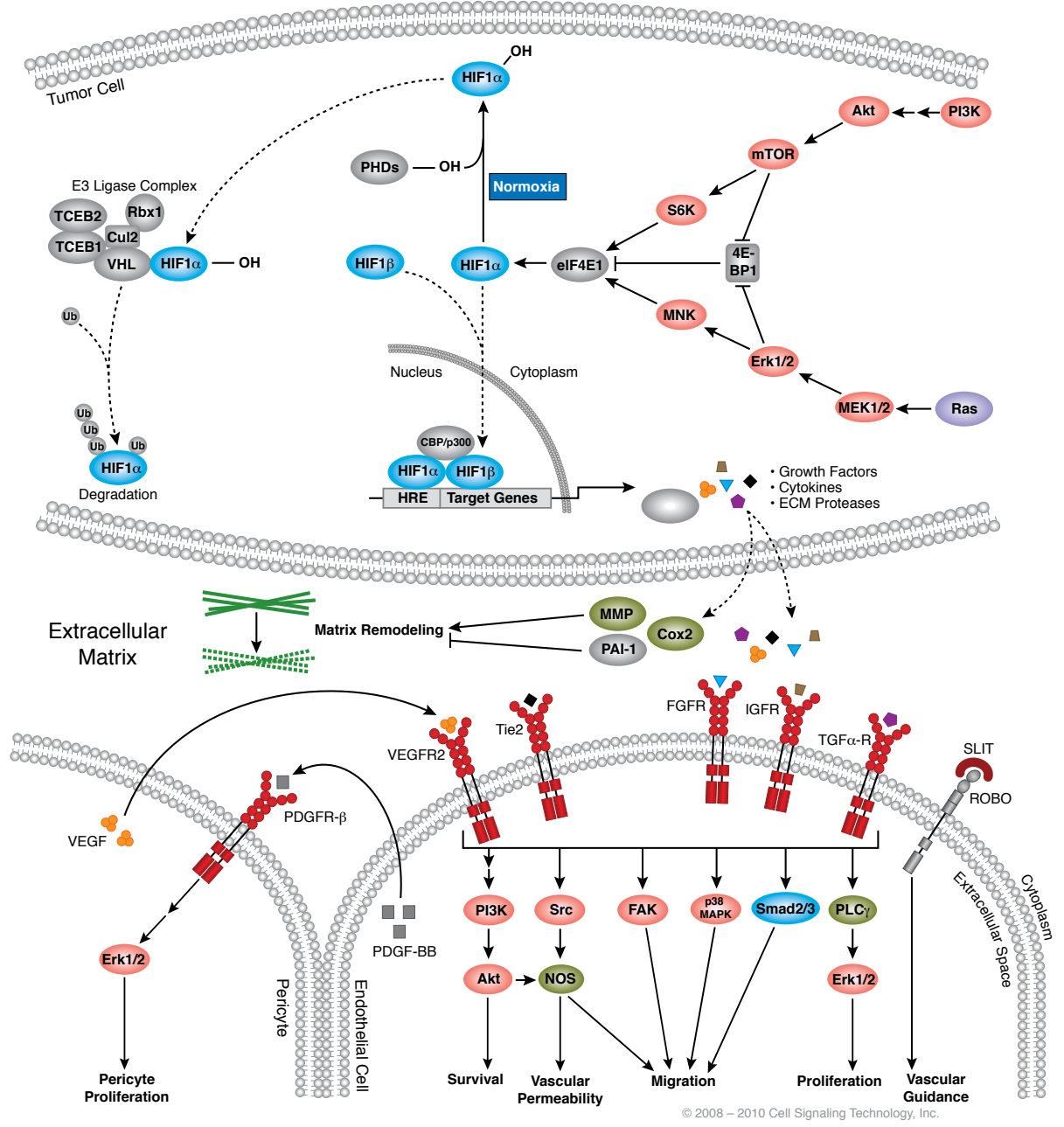
Antibodies and Related Reagents for Angiogenesis

Product Pathways

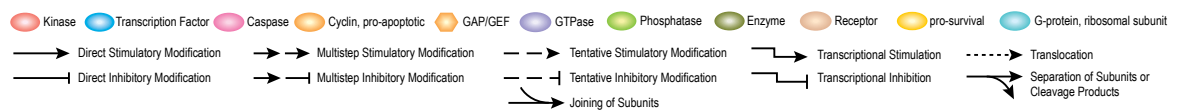
- Motif Antibodies
- Chromatin Regulation
- MAP Kinase Signaling
- Apoptosis and Autophagy
- PI3K / Akt Signaling
- Cellular Metabolism
- Translational Control
- Development and Differentiation
- Stem Cell and Lineage Markers
- Ca²⁺, cAMP, and Lipid Signaling
- Cell Cycle/Checkpoint Control
- NF-κB Signaling
- Lymphocyte Signaling
- Neuroscience
- Tyrosine Kinases and Docking Proteins
- > Angiogenesis
- Nuclear Receptors and Phosphatases
- Cytoskeletal Signaling
- Adhesion
- Protein Folding and Stability

For Research Use Only.
Not For Use In
Diagnostic Procedures.

Angiogenesis



© 2008 – 2010 Cell Signaling Technology, Inc.



Antibody Sampler Kits

- #4749 Integrin Antibody Sampler Kit
- #3640 Notch Isoform Antibody Sampler Kit
- #9360 PDGF Receptor α Antibody Sampler Kit
- #9970 PDGF Receptor β Antibody Sampler Kit

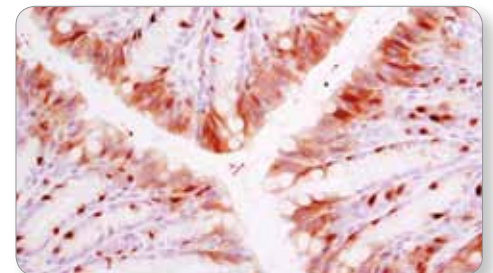
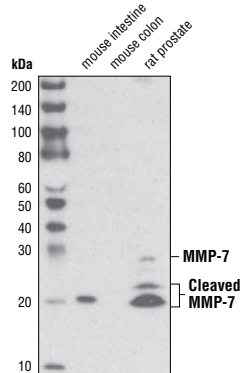
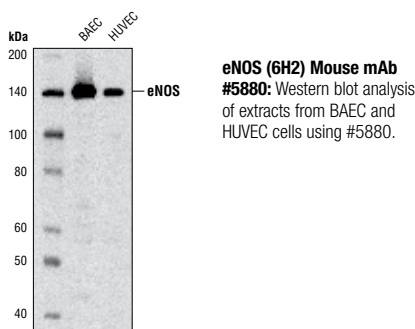
PhosphoPlus® Antibody Duets

- #8216 PhosphoPlus® Notch1 (Cleaved, Val1744) Antibody Duet

Antibodies

	Application	Reactivity
#2948 Angiotensin-2 Antibody	W	M
#5648 CA9 (D10C10) Rabbit mAb	W, IHC-P	H
#5649 CA9 (D47G3) Rabbit mAb	W, IP, IHC-P	H
XP #2500 VE-Cadherin (D87F2) XP® Rabbit mAb	W, IP, IF-IC, F	H, Dm, B, Pg, (Mk)
#2158 VE-Cadherin Antibody	W, IF-IC	H, Dm, B
#4771 Acetyl-CBP (Lys1535)/p300 (Lys1499) Antibody	W, IP, ChIP	H, M, R, Mk
#3568 CD31 (PECAM-1) (158-2B3) Mouse mAb	F	H
#3528 CD31 (PECAM-1) (89C2) Mouse mAb	W, IP, IHC-P, IF-IC, F	H
#4842 Cox2 Antibody	W, IHC-P	H, M, (R)
#2020 Cripto Antibody (Human Specific)	W, IP	H
#2818 Cripto Antibody (Mouse Specific)	W, IP, IF-IC	M
#2589 DLL4 Antibody	W, IP	H
#4335 Endoglin (D50G1) Rabbit mAb	W	H
#9575 Phospho-eNOS (Ser113) Antibody	W	B, (H)
#9574 Phospho-eNOS (Thr495) Antibody	W, IP	B, Pg, (H, M, R)
#9570 Phospho-eNOS (Ser1177) (C9C3) Rabbit mAb	W, IP, E-P	B, Pg, (H, M, R)
#9571 Phospho-eNOS (Ser1177) Antibody	W	R, B, Pg, (H, M)
#9586 eNOS (49G3) Rabbit mAb	W, IP	H, B, (M, R, Dg)
#5880 eNOS (6H2) Mouse mAb	W, IP, IHC-P	H, B
#9572 eNOS Antibody	W	B, Pg, (H, M, R, Dg)
#3970 Phospho-EphA2 (Tyr594) Antibody	W	H
New #8244 Phospho-EphA2 (Tyr772) Antibody	W, IP	H (M) (R) (Mk)
XP #6997 EphA2 (D4A2) XP® Rabbit mAb	W, IP, IF-IC	H, M, R, Mk
#3974 EphA2 Antibody	W	H
#3481 Phospho-Ephrin B (Tyr324/329) Antibody	W	H
#3980 EphB1 (5F10) Mouse mAb	W	H
#3139 Acidic FGF (11H11) Rabbit mAb	W, IP	H
#3196 Basic FGF (19A9) Rabbit mAb	W, IP	H
#3471 Phospho-FGF Receptor (Tyr653/654) Antibody	W	H, (M, R)
#3476 Phospho-FGF Receptor (Tyr653/654) (55H2) Mouse mAb	W	H, (M, R)
#2544 Phospho-FGF Receptor 1 (Tyr766) (1E5) Rabbit mAb	W	H
#3472 FGF Receptor 1 Antibody	W, IP	H, (M, R)
#4574 FGF Receptor 3 (C51F2) Rabbit mAb	W, IP, IHC-P, IF-IC	H

	Application	Reactivity
#3163 FGF Receptor 3 (D2G7E) Rabbit mAb	W, IP	H, M
#3160 FGF Receptor 3 Antibody	W	H, M
New XP #8562 FGF Receptor 4 (D3B12) XP® Rabbit mAb	W, IP, IF-IC	H
#2894 FGF Receptor 4 Antibody	W	M, (H)
#4426 FIH (D19B3) Rabbit mAb	W	H, M, R, Mk
#4383 Gremlin Antibody	W	M, (H, R)
XP #3434 Hydroxy-HIF-1 α (Pro564) (D43B5) XP® Rabbit mAb	W, IP, IF-IC	H, (M, R, Mk, C, X, Z, Pg)
#3716 HIF-1 α Antibody	W	H
#3414 HIF-1 β /ARNT (C15A11) Rabbit mAb	W, IP, IF-IC	H, Mk
#3718 HIF-1 β /ARNT Antibody	W, IF-IC	H, M, R, Mk
#5853 HO-1 (D60G11) Rabbit mAb	W, IP	H, (Mk)
#5141 HO-1 (P109) Antibody	W	H, M, R, Mk
#5061 HO-1 (P249) Antibody	W	H, M
#4705 Integrin α 5 Antibody	W	H, M, Mk
#4711 Integrin α V Antibody	W, IP	H, R
#3750 Integrin α 6 Antibody	W	H, M, R, Mk
#4706 Integrin β 1 Antibody	W	H, M, R, Mk
#4702 Integrin β 3 Antibody	W	H, M, R, Mk, B
#3629 Integrin beta-5 (D24A5) Rabbit mAb	W, IP	H, M, R, Mk
#4708 Integrin β 5 Antibody	W, IP, IF-IC	H
#2155 Jagged1 (1C4) Rabbit mAb	W	H
#2620 Jagged1 (28H8) Rabbit mAb		
#9119 Maspin (L250) Antibody	W	H, (Mk)
#9117 Maspin (T50) Antibody	W, IP	H, M, R, (Mk)
#2027 MCP-1 Antibody	W	H, (Mk)
#2029 MCP-1 Antibody (Mouse Specific)	W	M
#4022 MMP-2 Antibody	W	H, (M, R)
XP #3801 MMP-7 (D4H5) XP® Rabbit mAb	W, IHC-P	M, R
#2270 MMP-9 (G657) Antibody	W	H
#3852 MMP-9 Antibody	W, IHC-P	H, (R)
#3506 Phospho-NDRG1 (Ser330) Antibody	W, IP	H, M, (R, Mk)
XP #5482 Phospho-NDRG1 (Thr346) (D98G11) XP® Rabbit mAb	W, IHC-P, IF-IC, F	H, M, R, Mk
#3217 Phospho-NDRG1 (Thr346) Antibody	W, IP	H, M, R, (Mk)
#5196 NDRG1 Antibody	W, IP, IHC-P	H, M, R, Mk
#5667 NDRG2 Antibody	W	H, M, R
#5846 NDRG3 Antibody	W, IP	H, M, R, Mk
#4147 Cleaved Notch1 (Val1744) (D3B8) Rabbit mAb	W, IP	H, M, R
#2421 Cleaved Notch1 (Val1744) Antibody	W, IP	H, M, R, Mk
XP #3608 Notch1 (D1E11) XP® Rabbit mAb	W, IHC-P	H, M, R
#3439 Notch1 (C37C7) Rabbit mAb	W, IP	H
#3268 Notch1 (C44H11) Rabbit mAb	W	H, (M, R)
#3447 Notch1 (5B5) Rat mAb	W, IP	H, M, R, B
#2420 Notch2 (8A1) Rabbit mAb	W, IP	H
#5276 Notch3 (D11B8) Rabbit mAb	W, IP	H



Phospho-NDRG1 (Thr346) (D98G11) XP® Rabbit mAb #5482: IHC analysis of paraffin-embedded mouse colon using #5482.

	Application	Reactivity
#2889 Notch3 Antibody	W, IP	H
#3446 Notch3 (8G5) Rat mAb	W, IP	H, R
#2423 Notch4 (L5C5) Mouse mAb	W, IP	H
XP #3366 Neuropilin-2 (D39A5) XP® Rabbit mAb	W, IP, IHC-P, IF-F	M, R
#6976 PAR2 (D61D5) Rabbit mAb	W, IP	H
#2992 Phospho-PDGF Receptor α (Tyr754) (23B2) Rabbit mAb	W, IP	H, M, (R)
#3170 Phospho-PDGF Receptor α (Tyr849)/PDGF Receptor β (Tyr857) (C43E9) Rabbit mAb	W, IP	H, M, R
#4547 Phospho-PDGF Receptor α (Tyr1018) Antibody	W	H, M
#3168 Phospho-PDGF Receptor β (Tyr740) (32A9) Rabbit mAb	W	M, (H)
#4549 Phospho-PDGF Receptor β (Tyr751) (C63G6) Rabbit mAb	W	H, M, (R)
#3161 Phospho-PDGF Receptor β (Tyr751) Antibody	W, F	H, M, R
#3166 Phospho-PDGF Receptor β (Tyr751) (88H8) Mouse mAb	W, IP	H, M, R
#3173 Phospho-PDGF Receptor β (Tyr771) (76D6) Rabbit mAb	W	M, (H)
#3124 Phospho-PDGF Receptor β (Tyr1009) (42F9) Rabbit mAb	W, IP	H, M
#2227 Phospho-PDGF Receptor β (Tyr1021) (6F10) Rabbit mAb	W	H, M, R
XP #3174 PDGF Receptor α (D1E1E) XP® Rabbit mAb	W, IP, IHC-P, IF-IC, F	H, M
#3164 PDGF Receptor α Antibody	W, IP, IHC-P, F	H, M, R
#3169 PDGF Receptor β (28E1) Rabbit mAb	W, IP, IHC-P, IHC-F, IF-IC	H, M, R
#8044 PDGF Receptor β (28E1) Rabbit mAb (Biotinylated)	W	H, M, R
#4564 PDGF Receptor β (C82A3) Rabbit mAb	W, IHC-P, F	H, M, R
#3162 PDGF Receptor β Antibody	W	H, M, R
#3175 PDGF Receptor β (2B3) Mouse mAb	W, IP	M, R, (H)
#3293 PHD-2/Egln1 Antibody	W	H
New #8496 Phospho-Phospholamban (Ser16/Thr17) Antibody	W	R, (H, M, B, Dg, Pg)
New #8495 Phospholamban Antibody	W	H, M, R
#3433 RECK (D8C7) Rabbit mAb	W	H, M, R, Mk
#5250 Renin Antibody	W	H
#2654 Ron (C81H9) Rabbit mAb	W	H
#4269 Ron (1B5) Mouse mAb	W	H
#3715 Pro-TGF-α Antibody	W	H, M, (R)
#3711 TGF-β Antibody	W, IP	H, M, R
#3712 TGF-β Receptor I Antibody	W	H, R, Mi, (Pg)
#2519 TGF-β Receptor III Antibody	W, IP	H, M, (R)
#4221 Phospho-Tie2 (Tyr992) Antibody	W	H, (M)
#4226 Phospho-Tie2 (Ser1119) Antibody	W	H
New #7403 Tie2 (D9D10) Rabbit mAb	W	H
#4224 Tie2 (AB33) Mouse mAb	W, IP	H, B
#8946 TIMP1 (D10E6) Rabbit mAb	W	H, Mk
#5738 TIMP2 (D18B7) Rabbit mAb	W	H, M, Mk
#5673 TIMP3 (D74B10) Rabbit mAb	W	H, M, R, Mk
#4307 Thymidine Phosphorylase/ECGF1 (D69B12) Rabbit mAb	W, IP	H
#2937 TP/ECGF1 Antibody	W	H
#2463 VEGF-B Antibody	W	H

	Application	Reactivity
#2445 VEGF-C Antibody	W	H
#2893 VEGF Receptor 1 Antibody	W	H
#4991 Phospho-VEGF Receptor 2 (Tyr951) (15D2) Rabbit mAb	W, IHC-P	H, M
#2471 Phospho-VEGF Receptor 2 (Tyr951) Antibody	W	H, M
#2476 Phospho-VEGF Receptor 2 (Tyr951) (7H11) Mouse mAb	W	H, M
#2474 Phospho-VEGF Receptor 2 (Tyr996) Antibody	W	H, M
#2478 Phospho-VEGF Receptor 2 (Tyr1175) (19A10) Rabbit mAb	W, IHC-P, IF-IC	H, M
#2477 Phospho-VEGF Receptor 2 (Tyr1212) (11A3) Rabbit mAb	W	H, M
#2479 VEGF Receptor 2 (55B11) Rabbit mAb	W, IP, IHC-P, IF-F, IF-IC	H, M
#5168 VEGF Receptor 2 (55B11) Rabbit mAb (Sepharose Bead Conjugate)	IP	H, M
#2472 VEGF Receptor 2 Antibody	W	H, M, (R)
#2638 VEGF Receptor 3 (C28G5) Rabbit mAb	W	H
#3408 VEGF Receptor 3 (C82A2) Rabbit mAb	W	H
#2485 VEGF Receptor 3 Antibody	W	H
#2738 VHL Antibody	W	H, M, R, Mk, (B)

PathScan® Sandwich ELISA

#7980 PathScan® Phospho-eNOS (Ser1177) Sandwich ELISA Kit	ELISA	B
#7954 PathScan® Phospho-FGFR2 (panTyr) Sandwich ELISA Kit	ELISA	H
#7939 PathScan® Total FGFR2 Sandwich ELISA Kit	ELISA	H
#7335 PathScan® Phospho-VEGFR-2 (Tyr1175) Sandwich ELISA Kit	ELISA	H
#7824 PathScan® Phospho-VEGFR-2 (Tyr1175) Sandwich ELISA Antibody Pair	ELISA	H
#7340 PathScan® Total VEGFR-2 Sandwich ELISA Kit	ELISA	H
#7825 PathScan® Total VEGFR-2 Sandwich ELISA Antibody Pair	ELISA	H

Growth Factors and Cytokines

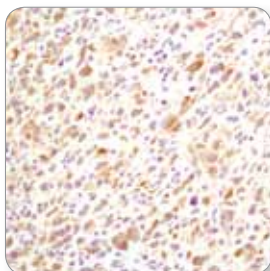
#8910 Human Basic Fibroblast Growth Factor (hFGF basic/FGF2)	
#5414 Mouse Basic Fibroblast Growth Factor (mFGF basic/FGF2)	
#8913 Human Platelet-Derived Growth Factor AA (hPDGF-AA)	
#8912 Human Platelet-Derived Growth Factor BB (hPDGF-BB)	
#5314 Mouse Vascular Endothelial Growth Factor-120 (mVEGF ₁₂₀)	
#8908 Human Vascular Endothelial Growth Factor-121 (hVEGF ₁₂₁)	
#5211 Mouse Vascular Endothelial Growth Factor-164 (mVEGF ₁₆₄)	
#5874 Rat Vascular Endothelial Growth Factor-164 (rVEGF ₁₆₄)	
#8065 Human Vascular Endothelial Growth Factor-165 (hVEGF ₁₆₅)	

Controls

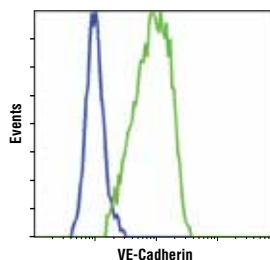
#2904 VEGF Receptor 2 Control Proteins

Applications: W=Western Blot IP=Immunoprecipitation IHC=Immunohistochemistry F=Flow Cytometry IF=Immunofluorescence ChIP=Chromatin Immunoprecipitation (-IC Immunocytochemistry, -P Paraffin, -F Frozen) E-P=ELISA (Peptide)

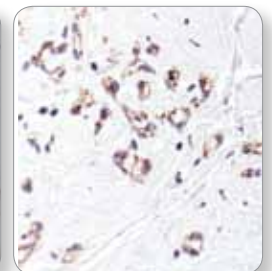
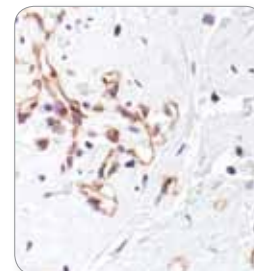
Reactivity: H=Human M=Mouse R=Rat Mk=Monkey Mi=Mink Pg=Pig C=Chicken B=Bovine Dm=D. melanogaster X=Xenopus Z=Zebrafish Dg=Dog
Species enclosed in parentheses are predicted to react based on 100% sequence homology.



PDGF Receptor α (D1E1E) XP® Rabbit mAb #3174: IHC analysis of paraffin-embedded U-118 MG xenograft using #3174 in the presence of control peptide (left) or antigen-specific peptide (right).



VE-Cadherin (D87F2) XP® Rabbit mAb #2500: Flow cytometric analysis of HeLa (blue) and HUVE (green) cells using #2500.



VEGF Receptor 2 (55B11) Rabbit mAb #2479: IHC analysis of paraffin-embedded breast angiosarcoma using #2479 (left). A serial section is stained for CD31 (PECAM-1), an endothelial cell marker (right).

USA Headquarters

Cell Signaling Technology, Inc.
Tel: 978-867-2300
E-mail: info@cellsignal.com
www.cellsignal.com

International Subsidiaries

Cell Signaling Technology (China) Limited
Tel: (86) 21-5835-6288
E-mail: info@cst-c.com.cn
www.cellsignal.com

Cell Signaling Technology Europe
Tel: +31 (0)71 568 1060
E-mail: info@cellsignal.eu
www.cellsignal.com

Cell Signaling Technology Japan, K.K.
Tel: 03-3295-16300
E-mail: info@cstj.co.jp
www.cstj.co.jp

Supporting Products

Antibody Sampler Kits

- #9962 Epitope Tag Antibody Sampler Kit
- #5142 Loading Control Antibody Sampler Kit
- #4670 Loading Control Antibody Sampler Kit (HRP Conjugate)

Secondary Antibodies and Detection Reagents

- #7071 Phototope®-HRP Western Blot Detection System, Anti-rabbit IgG, HRP-linked Antibody
- #7072 Phototope®-HRP Western Blot Detection System, Anti-mouse IgG, HRP-linked Antibody
- #4929 Albumin Antibody
- #5597 Anti-biotin (D5A7) Rabbit mAb
- #5571 Anti-biotin (D5A7) Rabbit mAb (HRP Conjugate)
- #7055 Anti-biotin, AP-linked Antibody
- #7075 Anti-biotin, HRP-linked Antibody
- New** #9863 Protein A Agarose Beads
- New** #8687 Protein A Magnetic Beads
- New** #8740 Protein G Magnetic Beads
- #7054 Anti-rabbit IgG, AP-linked Antibody
- #7074 Anti-rabbit IgG, HRP-linked Antibody
- #4412 Anti-rabbit IgG (H+L), F(ab)² Fragment (Alexa Fluor® 488 Conjugate)
- #4413 Anti-rabbit IgG (H+L), F(ab)² Fragment (Alexa Fluor® 555 Conjugate)
- #4414 Anti-rabbit IgG (H+L), F(ab)² Fragment (Alexa Fluor® 647 Conjugate)
- #6990 Anti-rabbit IgG F(ab)² Fragment (Sepharose Bead Conjugate)
- #5366 Anti-rabbit IgG (H+L) (DyLight® 680 Conjugate)
- #5151 Anti-rabbit IgG (H+L) (DyLight® 800 Conjugate)
- New** #3678 Mouse Anti-rabbit IgG (Conformation Specific) (L27A9) mAb
- New** #5127 Mouse Anti-rabbit IgG (Conformation Specific) (L27A9) mAb (HRP Conjugate)
- #3677 Mouse Anti-rabbit IgG (Light-Chain Specific) (L57A3) mAb
- #7056 Anti-mouse IgG, AP-linked Antibody
- #7076 Anti-mouse IgG, HRP-linked Antibody
- #4408 Anti-mouse IgG (H+L), F(ab)² Fragment (Alexa Fluor® 488 Conjugate)
- #4409 Anti-mouse IgG (H+L), F(ab)² Fragment (Alexa Fluor® 555 Conjugate)
- #4410 Anti-mouse IgG (H+L), F(ab)² Fragment (Alexa Fluor® 647 Conjugate)
- #5946 Anti-mouse IgG (H+L), F(ab)² Fragment (Sepharose Bead Conjugate)
- #5470 Anti-mouse IgG (H+L) (DyLight® 680 Conjugate)
- #5257 Anti-mouse IgG (H+L) (DyLight® 800 Conjugate)
- #7077 Anti-rat IgG, HRP-linked Antibody
- #4416 Anti-rat IgG (H+L), (Alexa Fluor® 488 Conjugate)
- #4417 Anti-rat IgG (H+L), (Alexa Fluor® 555 Conjugate)
- #4418 Anti-rat IgG (H+L), (Alexa Fluor® 647 Conjugate)
- #8125 SignalStain® Boost IHC Detection Reagent (HRP, Mouse)
- #8114 SignalStain® Boost IHC Detection Reagent (HRP, Rabbit)
- #8112 SignalStain® Antibody Diluent
- #3419 Streptavidin (Sepharose Bead Conjugate)
- #3999 Streptavidin-HRP

Buffers and Related Products

- #7003 20X LumiGLO® Reagent and 20X Peroxide
- #9998 BSA
- #9803 Cell Lysis Buffer (10X)
- #9852 Chaps Cell Extract Buffer (10X)
- New** #9871 20 mM Citrate pH 3.0 (Sterile)
- #4083 DAPI
- #4084 DRAQ5®
- New** #7406 DRAQ7™
- #4082 Hoechst #33342
- #5425 Normal Goat Serum
- #9999 Nonfat Dry Milk
- #7722 Blue Loading Buffer Pack
- #7723 Red Loading Buffer Pack
- New** #9872 Phosphate Buffered Saline (PBS-1X) pH7.2 (Sterile)
- #9808 Phosphate Buffered Saline (PBS-20X)
- #9809 Phosphate Buffered Saline with Tween 20 (PBST-20X)
- #5870 Phosphatase Inhibitor Cocktail (100X)
- #5871 Protease Inhibitor Cocktail (100X)
- #5872 Protease/Phosphatase Inhibitor Cocktail (100X)
- #7727 Biotinylated Protein Ladder Detection Pack
- #7720 Prestained Protein Marker, Broad Range (Premixed Format)
- #4087 Propidium Iodide (PI)/RNase Staining Solution
- #9806 RIPA Buffer (10X)
- #6883 SignalFire™ ECL Reagent
- #7002 STOP Solution
- #7004 TMB Substrate
- #4050 Tris-Glycine SDS Running Buffer (10X)
- #9997 Tris Buffered Saline with Tween 20 (TBST-10X)

Isotype Controls

- XP** #3900 Rabbit (DA1E) mAb IgG XP® Isotype Control
- XP** #2975 Rabbit (DA1E) mAb IgG XP® Isotype Control (Alexa Fluor® 488 Conjugate)
- New** #3969 Rabbit (DA1E) mAb IgG XP® Isotype Control (Alexa Fluor® 555 Conjugate)
- XP** #2985 Rabbit (DA1E) mAb IgG XP® Isotype Control (Alexa Fluor® 647 Conjugate)
- XP** #4096 Rabbit (DA1E) mAb IgG XP® Isotype Control (Biotinylated)
- XP** #3423 Rabbit (DA1E) mAb IgG XP® Isotype Control (Sepharose Bead Conjugate)
- XP** #8726 Rabbit (DA1E) mAb IgG XP® Isotype Control (Magnetic Bead Conjugate)
- XP** #5742 Rabbit (DA1E) mAb IgG XP® Isotype Control (PE Conjugate)
- #2729 Normal Rabbit IgG
- #4340 Rabbit IgG Isotype Control (Alexa Fluor® 488 Conjugate)
- #3452 Rabbit IgG Isotype Control (Alexa Fluor® 647 Conjugate)
- #3420 Mouse IgG (Sepharose Bead Conjugate)
- #5873 Mouse IgG (Magnetic Bead Conjugate)
- #5415 Mouse (G3A1) mAb IgG1 Isotype Control
- New** #9641 Mouse (G3A1) mAb IgG1 Isotype Control (Alexa Fluor® 555 Conjugate)
- #6899 Mouse (G3A1) mAb IgG1 Isotype Control (PE Conjugate)
- #4878 Mouse (MOPC-21) mAb IgG1 Isotype Control (Alexa Fluor® 488 Conjugate)
- #4843 Mouse (MOPC-21) mAb IgG1 Isotype control (Alexa Fluor® 647 Conjugate)
- #4097 Mouse (MOPC-21) mAb IgG1 Isotype Control (Biotinylated)

Epitope Tag Antibodies

- New** #8146 DYKDDDDK Tag (9A3) Mouse mAb (Binds to same epitope as Sigma's Anti-FLAG® M2 Antibody)
- #2368 DYKDDDDK Tag Antibody (Binds to same epitope as Sigma's Anti-FLAG® M2 Antibody)
- #2044 DYKDDDDK Tag Antibody (Binds to same epitope as Sigma's Anti-FLAG® M2 Antibody) (HRP Conjugate)
- #5407 DYKDDDDK Tag Antibody (Binds to same epitope as Sigma's Anti-FLAG® M2 Antibody) (Alexa Fluor® 488 Conjugate)
- #3768 DYKDDDDK Tag Antibody (Binds to same epitope as Sigma's Anti-FLAG® M2 Antibody) (Alexa Fluor® 555 Conjugate)
- New** #9696 DYKDDDDK Tag Antibody (Binds to same epitope as Sigma's Anti-FLAG® M2 Antibody) (Alexa Fluor® 594 Conjugate)
- #2908 DYKDDDDK Tag Antibody (Binds to same epitope as Sigma's Anti-FLAG® M2 Antibody) (Biotinylated)
- #2372 β-Gal (14B7) Mouse mAb
- XP** #2956 GFP (D5.1) XP® Rabbit mAb
- XP** #2912 GFP (D5.1) XP® Rabbit mAb (Biotinylated)
- XP** #2037 GFP (D5.1) XP® Rabbit mAb (HRP Conjugate)
- #2555 GFP Antibody
- #2955 GFP (4B10) Mouse mAb
- #9325 GSK-3β-Tag Antibody
- #2625 GST (91G1) Rabbit mAb
- #2622 GST Antibody
- #2624 GST (26H1) Mouse mAb
- #3368 GST (26H1) Mouse mAb (Alexa Fluor® 488 Conjugate)
- #3720 GST (26H1) Mouse mAb (Alexa Fluor® 555 Conjugate)
- #3445 GST (26H1) Mouse mAb (Alexa Fluor® 647 Conjugate)
- #5746 GST (91G1) Rabbit mAb (Biotinylated)
- #5475 GST (91G1) Rabbit mAb (HRP Conjugate)
- #3513 GST (26H1) Mouse mAb (Sepharose Bead Conjugate)
- #2448 Glu-Glu Tag Antibody
- #3724 HA-Tag (C29F4) Rabbit mAb
- #3956 HA-Tag (C29F4) Rabbit mAb (Sepharose Bead Conjugate)
- #5017 HA-Tag (C29F4) Rabbit mAb (Biotinylated)
- #2367 HA-Tag (6E2) Mouse mAb
- #2350 HA-Tag (6E2) Mouse mAb (Alexa Fluor® 488 Conjugate)
- #3444 HA-Tag (6E2) Mouse mAb (Alexa Fluor® 647 Conjugate)
- #2999 HA-Tag (6E2) Mouse mAb (HRP Conjugate)
- #2365 His-Tag Antibody
- #2366 His-Tag (27E8) Mouse mAb
- #4079 His-Tag (27E8) Mouse mAb (Sepharose Bead Conjugate)
- #2396 MBP (8G1) Mouse mAb
- #2278 Myc-Tag (71D10) Rabbit mAb
- #3946 Myc-Tag (71D10) Rabbit mAb (Biotinylated)
- #2272 Myc-Tag Antibody
- #2276 Myc-Tag (9B11) Mouse mAb
- #2279 Myc-Tag (9B11) Mouse mAb (Alexa Fluor® 488 Conjugate)
- #3756 Myc-Tag (9B11) Mouse mAb (Alexa Fluor® 555 Conjugate)
- New** #9483 Myc-Tag (9B11) Mouse mAb (Alexa Fluor® 594 Conjugate)
- #2233 Myc-Tag (9B11) Mouse mAb (Alexa Fluor® 647 Conjugate)
- #2040 Myc-Tag (9B11) Mouse mAb (HRP Conjugate)
- #3400 Myc-Tag (9B11) Mouse mAb (Sepharose Bead Conjugate)
- #5698 Myc-Tag (9B11) Mouse mAb (Magnetic Bead Conjugate)
- New** #3739 Myc-Tag (9B11) Mouse mAb (PE Conjugate)
- New** #8476 S-Tag Antibody
- #2547 Tat (8C2) Mouse mAb