

# Antibodies and Related Reagents for PI3K / Akt Signaling

## Product Pathways

Motif Antibodies

Chromatin Regulation

MAP Kinase Signaling

Apoptosis and Autophagy

### > PI3K / Akt Signaling

Cellular Metabolism

Translational Control

Development and Differentiation

Stem Cell and Lineage Markers

Ca<sup>2+</sup>, cAMP, and Lipid Signaling

Cell Cycle/Checkpoint Control

NF-κB Signaling

Lymphocyte Signaling

Neuroscience

Tyrosine Kinases and Docking Proteins

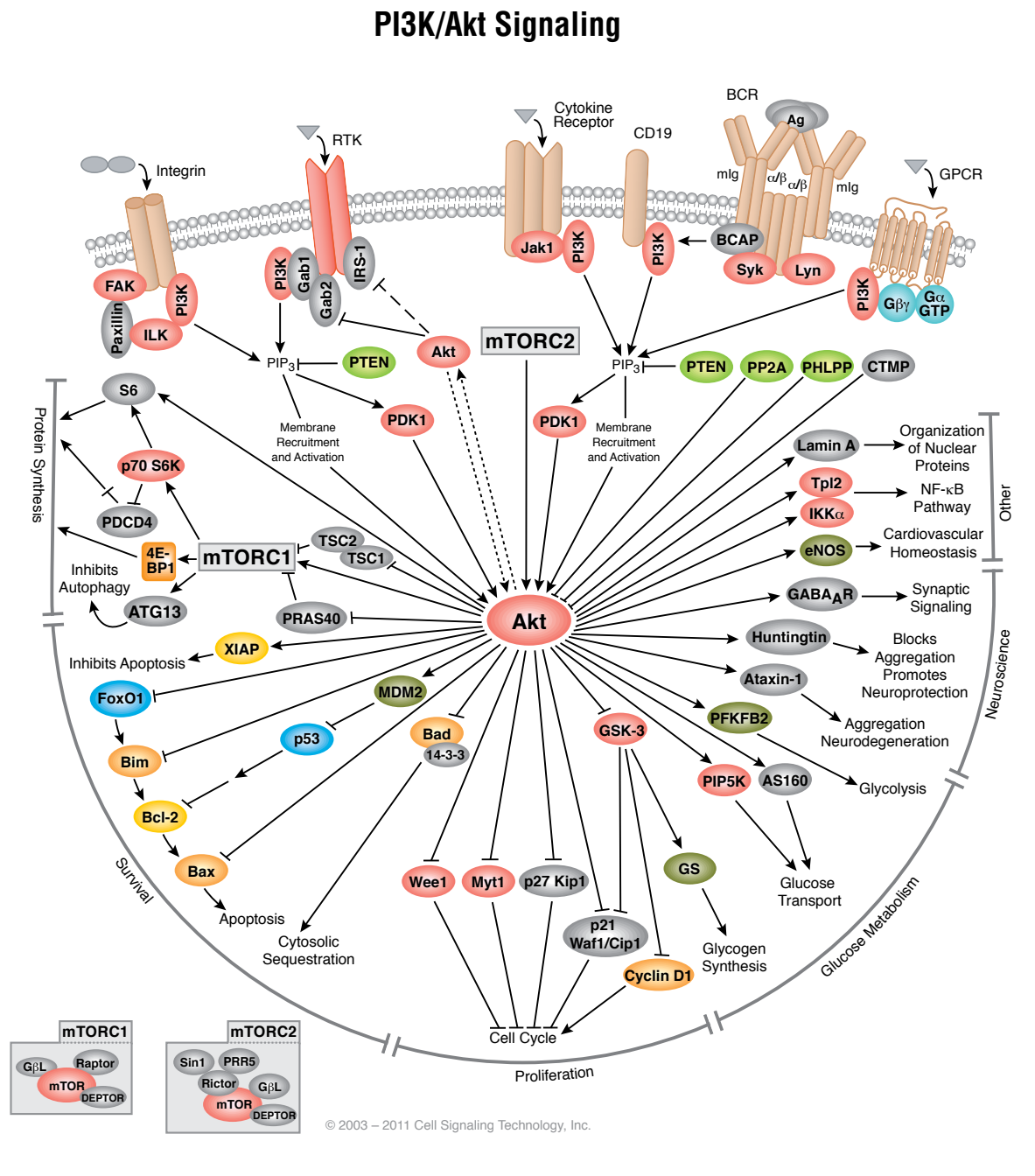
Angiogenesis

Nuclear Receptors and Phosphatases

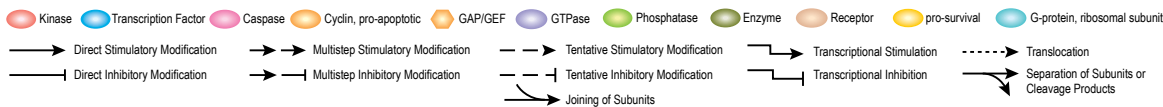
Cytoskeletal Signaling

Adhesion

Protein Folding and Stability



For Research Use Only.  
Not For Use In  
Diagnostic Procedures.



## Antibody Sampler Kits

#9916	Phospho-Akt Pathway Antibody Sampler Kit
#9940	Akt Isoform Antibody Sampler Kit
#9946	Forkhead Signaling Antibody Sampler Kit
#9369	GSK-3 Antibody Sampler Kit
#9655	PI3 Kinase Antibody Sampler Kit
#9652	PTEN and PDK1 Antibody Sampler Kit
<b>New</b> #8350	Phospho-TSC2 Antibody Sampler Kit
#8107	SignalStain® Akt Pathway IHC Sampler Kit
#8999	PathScan® Signaling Nodes Multiplex IF Kit

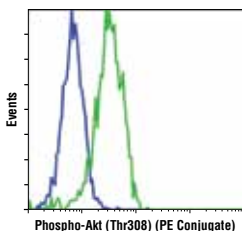
## PhosphoPlus® Antibody Duets

#8205	PhosphoPlus® Akt (Thr308) Antibody Duet
#8200	PhosphoPlus® Akt (Ser473) Antibody Duet
#8213	PhosphoPlus® GSK-3β (Ser9) Antibody Duet

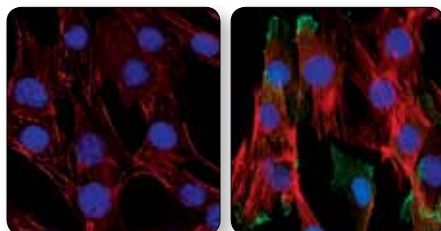
## Antibodies

	Application	Reactivity
#9614	Phospho-Akt Substrate (RXXS* <sup>T</sup> ) (110B7E) Rabbit mAb	W, IP, IHC-P, E-P All
#6950	Phospho-Akt Substrate (RXXS* <sup>T</sup> ) (110B7E) Rabbit mAb (HRP Conjugate)	W All
<b>New</b> #10001	Phospho-Akt Substrate (RXXS* <sup>T</sup> ) (23C8D2) Rabbit mAb	W, E-P All
#9611	Phospho-(Ser/Thr) Akt Substrate Antibody	W, IP, IHC-P, E-P All
#4056	Phospho-Akt (Thr308) (244F9) Rabbit mAb	W, IP H, M, R, Mk
#2965	Phospho-Akt (Thr308) (C31E5E) Rabbit mAb	W, IF-IC, F H, M, R, Hm, Mk
#2918	Phospho-Akt (Thr308) (C31E5E) Rabbit mAb (Alexa Fluor® 488 Conjugate)	F H, M, R, Mk
#3375	Phospho-Akt (Thr308) (C31E5E) Rabbit mAb (Alexa Fluor® 647 Conjugate)	F H, M, R, Hm, Mk
#5056	Phospho-Akt (Thr308) (C31E5E) Rabbit mAb (Biotinylated)	W H, M, R, Hm, Mk
<b>New</b> #9088	Phospho-Akt (Thr308) (C31E5E) Rabbit mAb (PE Conjugate)	F H, M
#9275	Phospho-Akt (Thr308) Antibody	W, IP, F H, M, R, Hm
#5106	Phospho-Akt (Thr308) (L32A4) Mouse mAb	W H, M, R, Mk
#9267	Phospho-Akt (Thr450) Antibody	W, IP H, M, R
<b>XP</b> #4060	Phospho-Akt (Ser473) (D9E) XP® Rabbit mAb	W, IP, IHC-P, IHC-F, IF-IC, F H, M, R, Hm, Mk, Dm, Z, B, (C, X, Dg, Pg)
<b>XP</b> #4071	Phospho-Akt (Ser473) (D9E) XP® Rabbit mAb (Alexa Fluor® 488 Conjugate)	F H, M, R
<b>XP</b> #4075	Phospho-Akt (Ser473) (D9E) XP® Rabbit mAb (Alexa Fluor® 647 Conjugate)	F H, M, R
<b>XP</b> #5012	Phospho-Akt (Ser473) (D9E) XP® Rabbit mAb (Biotinylated)	W, F H, M, R, Hm, Dm, Z, B
<b>XP</b> #5315	Phospho-Akt (Ser473) (D9E) XP® Rabbit mAb (PE Conjugate)	F H, M, R, Hm, Mk, Dm, Z, B, (C, X, Dg, Pg)
<b>XP</b> #5171	Phospho-Akt (Ser473) (D9E) XP® Rabbit mAb (HRP Conjugate)	W H, M, R, Hm, Mk, Dm, Z, B, (C, X, Dg, Pg)
<b>XP</b> #4070	Phospho-Akt (Ser473) (D9E) XP® Rabbit mAb (Sepharose Bead Conjugate)	IP H, M, R, Hm, Dm, Z, B, (Mk, C, Dg)

	Application	Reactivity
<b>New XP</b> #9563	Phospho-Akt (Ser473) (D9E) XP® Rabbit mAb (Magnetic Bead Conjugate)	IP H, M, R, Hm, Dm, Z, B, (Mk, C, Dg)
#4058	Phospho-Akt (Ser473) (193H12) Rabbit mAb	W, IP, IF-IC, F H, M, R
#2336	Phospho-Akt (Ser473) (193H12) Rabbit mAb (Alexa Fluor® 488 Conjugate)	F H, M, R
#2337	Phospho-Akt (Ser473) (193H12) Rabbit mAb (Alexa Fluor® 647 Conjugate)	F H, M, R
#3787	Phospho-Akt (Ser473) (736E11) Rabbit mAb	IHC-P, IHC-F H, M, (R)
#9271	Phospho-Akt (Ser473) Antibody	W, IP, IF-IC, F H, M, R, Hm, Dm, B, Dg, Pg, (Mk, C, X)
#4051	Phospho-Akt (Ser473) (587F11) Mouse mAb	W, IP H, M, R, Hm, (Mk)
#5102	Phospho-Akt (Ser473) (587F11) Mouse mAb (Biotinylated)	IP H, M, (R, Hm)
#4054	Phospho-Drosophila Akt (Ser505) Antibody	W Dm
#4685	Akt (pan) (11E7) Rabbit mAb	W, IP, IHC-P, IF-IC, F H, M, R, Mk
#4691	Akt (pan) (C67E7) Rabbit mAb	W, IP, IHC-P, IF-IC, F H, M, R, Mk, Dm
#5084	Akt (pan) (C67E7) Rabbit mAb (Alexa Fluor® 488 Conjugate)	IF-IC, F H, M, R, Mk, Dm
#5186	Akt (pan) (C67E7) Rabbit mAb (Alexa Fluor® 647 Conjugate)	IF-IC, F H, M, R, Mk, Dm
<b>New</b> #5373	Akt (pan) (C67E7) Rabbit mAb (Biotinylated)	W H, M, R, Mk, Dm
<b>New</b> #8596	Akt (pan) (C67E7) Rabbit mAb (HRP Conjugate)	W H, M, R, Mk, Dm
#4343	Akt (pan) (C67E7) Rabbit mAb (Sepharose Bead Conjugate)	IP H, M, R, Mk, Dm
#2920	Akt (pan) (40D4) Mouse mAb	W, IP, IHC-P, IF-IC, F H, M, R, Mk
#4821	Akt (pan) (40D4) Mouse mAb (Biotinylated)	W, IP, F H, M, R, Mk
#4298	Akt (pan) (40D4) Mouse mAb (HRP Conjugate)	W H, M, R, Mk
#3653	Akt (pan) (40D4) Mouse mAb (Sepharose Bead Conjugate)	IP H, M, R, Mk
#5697	Akt (pan) (40D4) Mouse mAb (Magnetic Bead Conjugate)	IP H, M, R, Mk
#9272	Akt Antibody	W, IP, IF-IC, F H, M, R, Hm, Mk, C, Dm, B, Pg, (Dg)
#2966	Akt (5G3) Mouse mAb	IP, IF-IC, F H, M, R, Hm
#2917	Akt (5G3) Mouse mAb (Alexa Fluor® 488 Conjugate)	F H, M, R, Hm
#2944	Akt (5G3) Mouse mAb (Alexa Fluor® 647 Conjugate)	F H, M, R, Hm
#2938	Akt1 (C73H10) Rabbit mAb	W, IP, IHC-P H, M, R, Mk
#2967	Akt1 (2H10) Mouse mAb	W, IP H, M, R
#2964	Akt2 (5B5) Rabbit mAb	W, IP H, M, R, Mk
#3063	Akt2 (D6G4) Rabbit mAb	W, IP H, M, R, Mk
#4090	Akt2 (D6G4) Rabbit mAb (Sepharose Bead Conjugate)	IP H, M, R, Mk
#5239	Akt2 (L79B2) Mouse mAb	W, IP H, M, R, Mk
#3788	Akt3 (62A8) Rabbit mAb	W, IP H, M, R
#4059	Akt3 Antibody	W, IP H, M, R
#8018	Akt3 (L47B1) Mouse mAb	W H, M, R, Hm
#9280	PhosphoPlus® Akt Activation Kit	



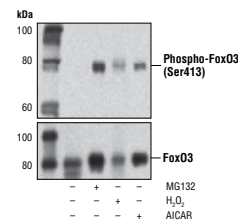
**Phospho-Akt (Thr308) (C31E5E) Rabbit mAb (PE Conjugate) #9088:** Flow cytometric analysis of NIH/3T3 cells, treated with Human Platelet-Derived Growth Factor BB (hPDGF-BB) #8912 (green) or treated with LY294002 #9901, Wortmannin #9951, and U0126 #9903 (blue), using #9088.



**Phospho-Akt (Ser473) (D9E) XP® Rabbit mAb #4060:** Confocal IF analysis of C2C12 cells, treated with LY294002 #9901 (left) or insulin (right), using #4060 (green). Actin filaments were labeled with Alexa Fluor® 555 phalloidin (red). Blue pseudocolor = DRAQ5® #4084 (fluorescent DNA dye).

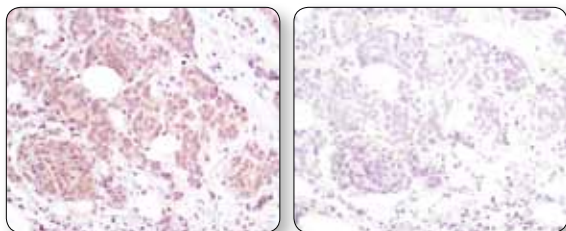


**PTEN (D4.3) XP® Rabbit mAb #9188:** IHC analysis of paraffin-embedded human colon using #9188.



**Phospho-FoxO3a (Ser413) (D77C9) Rabbit mAb #8174:** Western blot analysis of extracts from SH-SY5Y cells, untreated, MG132-treated, H<sub>2</sub>O<sub>2</sub>-treated, or AICAR-treated, using #8174 (upper) and FoxO3a (75D8) Rabbit mAb #2497 (lower).

	Application	Reactivity
#9270 PhosphoPlus® Akt (Ser473) Antibody Kit		
#8100 Survival Marker: SignalStain® Phospho-Akt (Ser473) IHC Detection Kit		
#4612 CTMP Antibody	W, IP, F	H, M, R
#9575 Phospho-eNOS (Ser113) Antibody	W	B, (H)
#9574 Phospho-eNOS (Thr495) Antibody	W, IP	B, Pg, (H, M, R)
#9570 Phospho-eNOS (Ser1177) (C9C3) Rabbit mAb	W, IP, E-P	B, Pg, (H, M, R)
#9571 Phospho-eNOS (Ser1177) Antibody	W	R, B, Pg, (H, M)
#9586 eNOS (49G3) Rabbit mAb	W, IP	H, B, (M, R, Dg)
#9572 eNOS Antibody	W	B, Pg, (H, M, R, Dg)
#5880 eNOS (6H2) Mouse mAb	W, IP, IHC-P	H, B
#9464 Phospho-FoxO1 (Thr24)/FoxO3a (Thr32) Antibody	W, IP	H, M, R, Mk
#2599 Phospho-FoxO1 (Thr24)/FoxO3a (Thr32)/FoxO4 (Thr28) (4G6) Rabbit mAb	W	H, M, Mk
#9461 Phospho-FoxO1 (Ser256) Antibody	W	H, M, R, Mk, (C)
#2486 Phospho-FoxO1 (Ser319) Antibody	W	H
#2487 Phospho-FoxO1 (Ser319)/FoxO4 (Ser262) Antibody	W	H
#2880 FoxO1 (C29H4) Rabbit mAb	W, IHC-P, IF-IC	H, M, R, Mk
#9454 FoxO1 (L27) Antibody	W	H, M, R, Mk, (C)
#9466 Phospho-FoxO3a (Ser253) Antibody	W, IP	H, M, (R, C)
#5538 Phospho-FoxO3a (Ser294) Antibody		
#9465 Phospho-FoxO3a (Ser318/321) Antibody	W, IP	H, M, R, Mk, (C)
#8174 Phospho-FoxO3a (Ser413) (D77C9) Rabbit mAb	W, IP	H
#2497 FoxO3a (75D8) Rabbit mAb	W, IF-IC	H, M, R, Mk
#3938 FoxO3a (75D8) Rabbit mAb (Biotinylated)	W	H, M, R
#9467 FoxO3a Antibody	W, IHC-P	H, Mk, (M, R)
#9471 Phospho-FoxO4 (Ser193) Antibody	W	H, M, Hm
#2499 FoxO4 (55D4) Rabbit mAb	W, IP	H
#9472 FoxO4 Antibody	W	H, M, R, Mk
#9316 Phospho-GSK-3α (Ser21) (36E9) Rabbit mAb	W, IHC-P	H, M, R, Mk
#8452 Phospho-GSK-3α (Ser21) (D1G2) Rabbit mAb	W, IP	H, M, R, Mk
#9337 Phospho-GSK-3α (Ser21) (46H12) Mouse mAb	W	H, M, R, Mk, Z
#5090 Phospho-GSK-3α (Ser21) (27E5) Mouse mAb	E-P	All
<b>New</b> #8566 Phospho-GSK-3α/β (Ser21/9) (D17D2) Rabbit mAb	W, IP	H, M, R, Hm, Mk
#9327 Phospho-GSK-3α/β (Ser21/9) (37F11) Rabbit mAb (GSK-3α Preferred)	W, IP	H, M, R, Mk
#9331 Phospho-GSK-3α/β (Ser21/9) Antibody	W, IHC-P	H, M, R, Mk, Z
<b>XP</b> #5558 Phospho-GSK-3β (Ser9) (D85E12) XP® Rabbit mAb	W, IP, IF-IC, F	H, M, R, Hm
#9323 Phospho-GSK-3β (Ser9) (5B3) Rabbit mAb	W, IHC-P, IF-IC	H, M, R, Mk
#9322 Phospho-GSK-3β (Ser9) (D3A4) Rabbit mAb	W, IP	H, M, R
#9336 Phospho-GSK-3β (Ser9) Antibody	W	H, M, R, Mk, (Z, B)
#3548 Phospho-GSK-3β (Thr390) Antibody	W	H
<b>XP</b> #4818 GSK-3α (D80D1) XP® Rabbit mAb	IF-IC, F	H, M, (R)
#4337 GSK-3α (D80E6) Rabbit mAb	W, IP	H, M, R, Hm, Mk
#9338 GSK-3α Antibody	W	H, M, R, Mk
<b>XP</b> #5676 GSK-3α/β (D75D3) XP® Rabbit mAb	W, IP, IF-IC	H, M, R, Hm, Mk



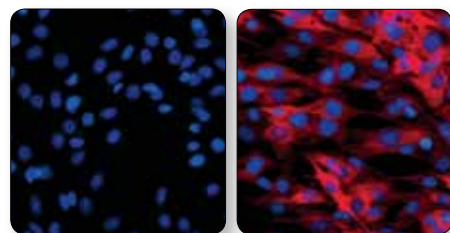
**Akt (pan) (40D4) Mouse mAb #2920:** IHC analysis of paraffin-embedded human breast carcinoma using #2920 in the presence of control peptide (left) or Akt (pan) Blocking Peptide #1085 (right).

## Akt Antibody Comparison

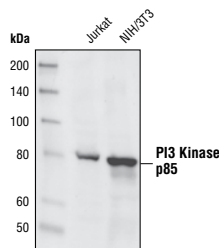
	Reactivity	WB	IP	IHC	Flow	IF
#2965 Phospho-Akt (Thr308) (C31E5E) Rabbit mAb	H, M, R, Mk, Hm	++++	-	N/T	++++	++
#2918 Phospho-Akt (Thr308) (C31E5E) Rabbit mAb (Alexa Fluor® 488 Conjugate)	H, M, R, Mk, Hm	N/A	N/A	N/A	++++	-
#3375 Phospho-Akt (Thr308) (C31E5E) Rabbit mAb (Alexa Fluor® 647 Conjugate)	H, M, R, Mk, Hm	N/A	N/A	N/A	++++	-
#5056 Phospho-Akt (Thr308) (C31E5E) Rabbit mAb (Biotinylated)	H, M, R, Mk, Hm	++++	N/T	N/A	N/T	N/T
#4056 Phospho-Akt (Thr308) (244F9) Rabbit mAb	H, M, R	+++	+++	-	-	-
#9275 Phospho-Akt (Thr308) Antibody	H, M, R, Hm	+++	+++	-	++	-
#5106 Phospho-Akt (Thr308) (L32A4) Mouse mAb	H, M, R, Mk	+++	-	-	-	-
#9267 Phospho-Akt (Thr450) Antibody	H, M, R	++	++	-	-	-
#4060 Phospho-Akt (Ser473) (D9E) XP® Rabbit mAb	H, M, R, Mk, Hm, B, Dm, Z, (Pg, C, X, Dg)	++++	++++	++++	++++	++++
#4071 Phospho-Akt (Ser473) (D9E) XP® Rabbit mAb (Alexa Fluor® 488 Conjugate)	H, M, R, Mk, Hm, B, Dm, Z, (Pg, C, X, Dg)	N/A	N/A	N/A	++++	-
#4075 Phospho-Akt (Ser473) (D9E) XP® Rabbit mAb (Alexa Fluor® 647 Conjugate)	H, M, R, Mk, Hm, B, Dm, Z, (Pg, C, X, Dg)	N/A	N/A	N/A	++++	-
#5012 Phospho-Akt (Ser473) (D9E) XP® Rabbit mAb (Biotinylated)	H, M, R, Mk, Hm, B, Dm, Z, (Pg, C, X, Dg)	++++	-	N/A	++++	N/T
#4070 Phospho-Akt (Ser473) (D9E) XP® Rabbit mAb (Sepharose Bead Conjugate)	H, M, R, Mk, Hm, B, Dm, Z, (Pg, C, X, Dg)	N/A	++++	N/A	N/A	N/A
#5171 Phospho-Akt (Ser473) (D9E) XP® Rabbit mAb (HRP Conjugate)	H, M, R, Mk, Hm, B, Dm, Z, (Pg, C, X, Dg)	++++	N/A	N/A	N/A	N/A
#5315 Phospho-Akt (Ser473) (D9E) XP® Rabbit mAb (PE Conjugate)	H, M, R, Mk, Hm, B, Dm, Z, (Pg, C, X, Dg)	N/A	N/A	N/A	++++	N/A
#4058 Phospho-Akt (Ser473) (193H12) Rabbit mAb	H, M, R	+++	+++	-	+++	+++
#2336 Phospho-Akt (Ser473) (193H12) Rabbit mAb (Alexa Fluor® 488 Conjugate)	H, M, R	N/A	N/A	N/A	+++	-
#2337 Phospho-Akt (Ser473) (193H12) Rabbit mAb (Alexa Fluor® 647 Conjugate)	H, M, R	N/A	N/A	N/A	+++	-
#3787 Phospho-Akt (Ser473) (736E11) Rabbit mAb	H, M, (R)	-	-	++	-	-
#9271 Phospho-Akt (Ser473) Antibody	H, M, R, Pg, Hm, B, Dm, Dg, (Mk, C, X)	+++	++	-	++	++
#4051 Phospho-Akt (Ser473) (587F11) Mouse mAb	H, M, R, Hm, (Mk)	+++	+++	-	-	-
#5102 Phospho-Akt (Ser473) (587F11) Mouse mAb (Biotinylated)	H, M, R, Hm, (Mk)	N/T	+++	N/A	N/T	N/T
#4054 Phospho-Drosophila Akt (Ser505) Antibody	Dm	++++	N/T	-	N/T	-
#4685 Akt (pan) (11E7) Rabbit mAb	H, M, R, Mk	+++	+++	+++	+++	+++
#4691 Akt (pan) (C67E7) Rabbit mAb	H, M, R, Mk, Dm	++++	++++	++++	++++	++++
#5084 Akt (pan) (C67E7) Rabbit mAb (Alexa Fluor® 488 Conjugate)	H, M, R, Mk, Dm	N/A	N/A	N/A	++++	++++
#5186 Akt (pan) (C67E7) Rabbit mAb (Alexa Fluor® 647 Conjugate)	H, M, R, Mk, Dm	N/A	N/A	N/A	++++	N/T
#4343 Akt (pan) (C67E7) Rabbit mAb (Sepharose Bead Conjugate)	H, M, R, Mk, Dm	N/A	++++	N/A	N/A	N/A
#2920 Akt (pan) (40D4) Mouse mAb	H, M, R, Mk	+++	++++	+++	++++	+++
#4821 Akt (pan) (40D4) Mouse mAb (Biotinylated)	H, M, R, Mk	+++	++++	N/A	++++	N/T
#4298 Akt (pan) (40D4) Mouse mAb (HRP Conjugate)	H, M, R, Mk	+++	N/A	N/A	N/A	N/A
#3653 Akt (pan) (40D4) Mouse mAb (Sepharose Bead Conjugate)	H, M, Mk	-	++++	-	-	-
#9272 Akt Antibody	H, M, R, Mk, Pg, C, Hm, B, Dm, (Dg)	+++	+++	-	++	+++
#2966 Akt (5G3) Mouse mAb	H, M, R, Hm	-	++++	-	++	+++
#2917 Akt (5G3) Mouse mAb (Alexa Fluor® 488 Conjugate)	H, M, R, Hm	N/A	N/A	N/A	++++	-
#2944 Akt (5G3) Mouse mAb (Alexa Fluor® 647 Conjugate)	H, M, R, Hm	N/A	N/A	N/A	++++	-
#2938 Akt1 (C73H10) Rabbit mAb	H, M, R, Mk	++++	++++	++++	-	-
#2967 Akt1 (2H10) Mouse mAb	H, M, R	+++	+++	-	-	-
#3063 Akt2 (D6G4) Rabbit mAb	H, M, R, Mk	++++	+++	-	-	-
#4090 Akt2 (D6G4) Rabbit mAb (Sepharose Bead Conjugated)	H, M, R, Mk	N/A	++++	N/T	N/T	N/T
#2964 Akt2 (5B5) Rabbit mAb	H, M, R, Mk	+++	+++	-	-	-
#5239 Akt2 (L79B2) Mouse mAb	H, M, R, Mk	+++	+++	-	N/T	-
#3788 Akt3 (62A8) Rabbit mAb	H, M, R	+++	+++	-	-	-
#4059 Akt3 Antibody	H, M, R	++	++	-	N/T	N/T

Testing Key: ++++ Very Highly Recommended / +++ Highly Recommended / ++ Recommended / - Not Recommended / N/T Not Tested / N/A Not Applicable

		Application	Reactivity
	#9315 GSK-3β (27C10) Rabbit mAb	W, IP, IHC-P	H, M, R, Mk
	#9832 GSK-3β (3D10) Mouse mAb	W, IP, IF-IC, F	H, M, R, Hm, Mk
	#4039 INPP4b Antibody	W	H, M, R, Mk
	#3506 Phospho-NDRG1 (Ser330) Antibody	W, IP	H, M, (R, Mk)
<b>XP</b>	#5482 Phospho-NDRG1 (Thr346) (D98G11) XP <sup>®</sup> Rabbit mAb	W, IHC-P, IF-IC, F	H, M, R, Mk
<b>XP</b>	#6992 Phospho-NDRG1 (Thr346) (D98G11) XP <sup>®</sup> Rabbit mAb (Alexa Fluor <sup>®</sup> 488 Conjugate)	IF-IC, F	H, M, R, Mk
<b>New XP</b>	#9851 Phospho-NDRG1 (Thr346) (D98G11) XP <sup>®</sup> Rabbit mAb (Alexa Fluor <sup>®</sup> 555 Conjugate)	IF-IC	H, M, R, Mk
<b>XP</b>	#7497 Phospho-NDRG1 (Thr346) (D98G11) XP <sup>®</sup> Rabbit mAb (Alexa Fluor <sup>®</sup> 647 Conjugate)	IF-IC, F	H, M, R, Mk
	#3217 Phospho-NDRG1 (Thr346) Antibody	W, IP	H, M, R, (Mk)
	#5196 NDRG1 Antibody	W, IP, IHC-P	H, M, R, Mk
	#5667 NDRG2 Antibody	W	H, M, R
	#5846 NDRG3 Antibody	W, IP	H, M, R, Mk
	#9634 Phospho-(Ser/Thr) PDK1 Docking Motif (18A2) Mouse mAb	W, IP, E-P	All
	#3438 Phospho-PDK1 (Ser241) (C49H2) Rabbit mAb	W, IP	H, M, R
	#3061 Phospho-PDK1 (Ser241) Antibody	W, IP	H, M, R
	#5662 PDK1 (D37A7) Rabbit mAb	W	H, M, R, Hm, Mk
	#3062 PDK1 Antibody	W	H, M, R, Mk
	#4294 PHLDA3 Antibody	W	H, M, R, Mk
	#4228 Phospho-PI3 Kinase p85 (Tyr458)/p55 (Tyr199) Antibody	W, IP	M, (H, R, Mk, B)
	#4257 PI3 Kinase p85 (19H8) Rabbit mAb	W, IP	H, M, R
	#4292 PI3 Kinase p85 Antibody	W, IP	H, M, R
	#5569 PI3 Kinase p101 (D32A5) Rabbit mAb	W	H, M, (R)
	#4249 PI3 Kinase p110α (C73F8) Rabbit mAb	W, IP, IHC-P	H, M, R, B
	#4255 PI3 Kinase p110α Antibody	W, IP	H, M, R, (B)
	#3011 PI3 Kinase p110β (C33D4) Rabbit mAb	W, IP	H
	#5405 PI3 Kinase p110γ (D55D5) Rabbit mAb	W, IP	H, M, (R)
	#4252 PI3 Kinase p110γ Antibody	W	H, M
	#3358 PI3 Kinase Class III (D4E2) Rabbit mAb	W	H, M, R, Mk
	#4263 PI3 Kinase Class III (D9A5) Rabbit mAb	W, IP	H, M, R, Mk
	#3811 PI3 Kinase Class III Antibody	W, IP	H, M, R
	#4902 PI4 Kinase Antibody	W, IP, IF-IC	H, M, R
	#8188 PKD2 (D1A7) Rabbit mAb	W, IF-IC	H, Mk, Pg
	#5936 Phospho-PRAS40 (Ser183) Antibody	W, IP	H, M, (R)
	#2997 Phospho-PRAS40 (Thr246) (C77D7) Rabbit mAb	W, IP, IHC-P	H, M, R, Mk
	#2640 Phospho-PRAS40 (Thr246) Antibody	W	H, M, R, Mk
<b>XP</b>	#2691 PRAS40 (D23C7) XP <sup>®</sup> Rabbit mAb	W, IP, IHC-P	H, M, R, Mk
	#2610 PRAS40 Antibody	W	H, M, R, Mk
	#9551 Phospho-PTEN (Ser380) Antibody	W, IP	H, M, R, (C)
	#9549 Phospho-PTEN (Ser380/Thr382/383) (44A7) Rabbit mAb	W	H, M, R, Mk
	#9554 Phospho-PTEN (Ser380/Thr382/383) Antibody	W, IP	H, M, R



**Phospho-NDRG1 (Thr346) (D98G11) XP<sup>®</sup> Rabbit mAb (Alexa Fluor<sup>®</sup> 555 Conjugate) #9851:** IF analysis of C2C12 cells, treated with LY294002 #9901 (left) or insulin (right), using #9851 (red). Blue pseudocolor = DRAQ5<sup>®</sup> #4084 (fluorescent DNA dye).



**PI3 Kinase p85 (19H8) Rabbit mAb #4257:** Western blot analysis of extracts from Jurkat and NIH/3T3 cells using #4257.

		Application	Reactivity
<b>New</b>	#7960 Non-phospho PTEN (Ser380/Thr382/Thr383) (D2D11) Rabbit mAb	W, IP	H, M, R, Mk
	#9569 Non-phospho PTEN (Ser380/Thr382/Thr383) Antibody	W, IP	M, R, (H)
<b>XP</b>	#9188 PTEN (D4.3) XP <sup>®</sup> Rabbit mAb	W, IP, IHC-P	H, M, R, Mk, (C)
<b>XP</b>	#4005 PTEN (D4.3) XP <sup>®</sup> Rabbit mAb (Biotinylated)	W, IP	H, M, R, Hm, Mk
<b>XP</b>	#4326 PTEN (D4.3) XP <sup>®</sup> Rabbit mAb (Sepharose Bead Conjugate)	IP	H, M, R, Mk
	#9559 PTEN (138G6) Rabbit mAb	W, IP, IHC-P	H, M, R, Mk
	#9583 PTEN (138G6) Rabbit mAb (Biotinylated)	W, IP	H, M, R, Mk
	#5384 PTEN (D5G7) Rabbit mAb	W	H, M, R, (X)
	#9552 PTEN Antibody	W, IP	H, M, R, Hm, Mk, (C)
	#9556 PTEN (26H9) Mouse mAb	W, IP	H, M, R, Hm, Mk
	#2516 REDD1 Antibody	W	H
	#3941 Phospho-SHIP1 (Tyr1020) Antibody	W	H, M
	#2725 SHIP1 (C15C9) Rabbit mAb	W, IP, F	H
	#2727 SHIP1 (C40G9) Rabbit mAb	W, IP, IF-IC, F	H
	#2728 SHIP1 (D1163) Antibody	W, IP	H, M, (R)
	#2726 SHIP1 (P290) Antibody	W, IP, IF-IC, F	H
	#2008 Phospho-SHIP2 (Tyr986/987) Antibody	W	H, (M, R)
	#2007 Phospho-SHIP2 (Tyr1135) Antibody	W	H
	#2839 SHIP2 (C76A7) Rabbit mAb	W, IP, IF-IC, F	H
	#2730 SHIP2 Antibody	W	H
	#5599 Phospho-SGK1 (Ser78) (D36D11) Rabbit mAb	W, IP	H, (M, R, Mk)
	#3271 Phospho-SGK (Ser78) Antibody	W	H, (M, R)
	#3272 SGK Antibody	W	H, (M, R)
	#7499 SGK2 (D7G1) Rabbit mAb	W	H, M, R
	#5595 SGK2 Antibody	W, IP	H, M, R
	#5642 Phospho-SGK3 (Thr320) (D30E6) Rabbit mAb	W	H, (M, R, Mk)
<b>New</b>	#8156 SGK3 (D18D1) Rabbit mAb	W, IP	H, M, R, Mk
<b>New</b>	#8573 SGK3 (D42C2) Rabbit mAb	W, IP	H, M, R, Mk
	#4227 SGK3 Antibody	W, IP	H, M, (R)
	#4042 TCL1 Antibody	W, IHC-P	H, (M)
	#4016 TCL1 (1-21) Mouse mAb	W, IP	H, (Mk)
	#6935 Hamartin/TSC1 (D43E2) Rabbit mAb	W, IP	H, M, R
	#4906 Hamartin/TSC1 Antibody	W, IP	H, M, R
	#4963 Hamartin/TSC1 (1B2) Mouse mAb	W	H, M, R
	#3615 Phospho-Tuberin/TSC2 (Ser939) Antibody	W	H, M
	#3616 Phospho-Tuberin/TSC2 (Ser1254) Antibody	W	M, R, (H)
	#5584 Phospho-Tuberin/TSC2 (Ser1387) Antibody	W, IP	H, M, R, Mk
	#3617 Phospho-Tuberin/TSC2 (Thr1462) (5B12) Rabbit mAb	W, IP	H, M, R
	#3611 Phospho-Tuberin/TSC2 (Thr1462) Antibody	W	H, M, (R)
	#3614 Phospho-Tuberin/TSC2 (Tyr1571) Antibody	W	M, Mk, (H)
<b>XP</b>	#4308 Tuberin/TSC2 (D93F12) XP <sup>®</sup> Rabbit mAb	W, IP, IF-IC	H, M, R, Hm, Mk
	#3990 Tuberin/TSC2 (D57A9) Rabbit mAb	W, IP	H, M, R
	#3635 Tuberin/TSC2 (28A7) Rabbit mAb	W, IP	H
	#3612 Tuberin/TSC2 Antibody	W	H, M, R, Mk
	#4946 Phospho-WNK1 (Thr60) Antibody	W	H, (M, R)
	#4979 WNK1 Antibody	W	H, Mk
	#5713 WNK4 Antibody	W	H, M, R, Dg, (B)
	#2900 Phospho-YB1 (Ser102) (C34A2) Rabbit mAb	W	H, M, Mk, (R, B)
	#4202 YB1 (D299) Antibody	W, IHC-P, IF-IC	H, M, R, Mk, (X, B)

**Applications Key:** W=Western Blot IP=Immunoprecipitation IHC=Immunohistochemistry F=Flow Cytometry IF=Immunofluorescence CHIP=Chromatin Immunoprecipitation (-IC Immunocytochemistry, -P Paraffin, -F Frozen), E-P=ELISA (Peptide)

**Reactivity Key:** H=Human M=Mouse R=Rat Mk=Monkey Pg=Pig C=Chicken Hm=Hamster B=Bovine Dm=D. melanogaster X=Xenopus Z=Zebrafish Dg=Dog  
Species enclosed in parentheses are predicted to react based on 100% sequence homology.

# PI3K / Akt Signaling

## PathScan® Sandwich ELISA

- #7982 PathScan® RTK Signaling Antibody Array Kit (Chemiluminescent Readout)
- #7949 PathScan® RTK Signaling Antibody Array Kit (Fluorescent Readout)
- #7239 PathScan® Cell Growth Multi-Target Sandwich ELISA Kit
- #7272 PathScan® Signaling Nodes Multi-Target Sandwich ELISA Kit
- #7252 PathScan® Phospho-Akt (Thr308) Sandwich ELISA Kit
- #7144 PathScan® Phospho-Akt (Thr308) Sandwich ELISA Antibody Pair
- #7135 PathScan® Phospho-Akt (Thr308) Chemiluminescent Sandwich ELISA Kit
- #7160 PathScan® Phospho-Akt1 (Ser473) Sandwich ELISA Kit
- #7143 PathScan® Phospho-Akt1 (Ser473) Sandwich ELISA Antibody Pair
- #7134 PathScan® Phospho-Akt1 (Ser473) Chemiluminescent Sandwich ELISA Kit
- #7048 PathScan® Phospho-Akt2 (Ser474) Sandwich ELISA Kit
- #7932 PathScan® Phospho-Akt2 (Ser474) Sandwich ELISA Kit (Mouse Preferred)
- #7170 PathScan® Total Akt1 Sandwich ELISA Kit
- #7142 PathScan® Total Akt1 Sandwich ELISA Antibody Pair
- #7132 PathScan® Total Akt1 Chemiluminescent Sandwich ELISA Kit
- #7046 PathScan® Total Akt2 Sandwich ELISA Kit
- #7930 PathScan® Total Akt2 Sandwich ELISA Kit (Mouse Preferred)
- #7980 PathScan® Phospho-eNOS (Ser1177) Sandwich ELISA Kit
- New** #7311 PathScan® Phospho-GSK-3β (Ser9) Sandwich ELISA Kit
- New** #7265 PathScan® Total GSK-3β Sandwich ELISA Kit
- #7327 PathScan® Phospho-PRAS40 (Thr246) Sandwich ELISA Kit
- New** #7331 PathScan® Total PRAS40 Sandwich ELISA Kit
- #7285 PathScan® Phospho-PTEN (Ser380) Sandwich ELISA Kit
- #7882 PathScan® Total PTEN Sandwich ELISA Kit
- #7883 PathScan® Total PTEN Sandwich ELISA Antibody Pair

## SignalSilence® siRNA

- #6211 SignalSilence® Akt siRNA I
- #6510 SignalSilence® Akt siRNA II
- #6909 SignalSilence® Akt1 siRNA I (Mouse Specific)
- #6396 SignalSilence® Akt2 siRNA
- #6407 SignalSilence® Akt2 siRNA I (Mouse Specific)
- #6408 SignalSilence® Akt2 siRNA II (Mouse Specific)
- #6242 SignalSilence® FoxO1 siRNA I
- #6468 SignalSilence® FoxO1 siRNA I (Mouse Specific)
- #6256 SignalSilence® FoxO1 siRNA II
- #6493 SignalSilence® FoxO1 siRNA II (Mouse Specific)
- #6302 SignalSilence® FoxO3a siRNA I
- New** #8620 SignalSilence® FoxO3a siRNA I (Mouse Specific)
- #6303 SignalSilence® FoxO3a siRNA II
- New** #8702 SignalSilence® FoxO3a siRNA II (Mouse Specific)
- #6312 SignalSilence® GSK-3α siRNA I
- #6333 SignalSilence® GSK-3α siRNA I (Mouse Specific)
- #6524 SignalSilence® GSK-3α siRNA II
- #6335 SignalSilence® GSK-3α siRNA II (Mouse Specific)
- #6301 SignalSilence® GSK-3α/β siRNA
- #6993 SignalSilence® GSK-3β siRNA I (Mouse Specific)
- #6245 SignalSilence® NDRG1 siRNA I
- #6257 SignalSilence® NDRG1 siRNA II
- #6912 SignalSilence® PI3 Kinase p85α siRNA I (Mouse Specific)
- #6359 SignalSilence® PI3 Kinase p110α siRNA I
- #6314 SignalSilence® PDK1 siRNA I
- #6251 SignalSilence® PTEN siRNA I
- #6538 SignalSilence® PTEN siRNA II
- #6476 SignalSilence® Tuberin/TSC2 siRNA I
- #6548 SignalSilence® Tuberin/TSC2 siRNA II
- #6206 SignalSilence® YB1 siRNA I
- #6207 SignalSilence® YB1 siRNA II

## Controls

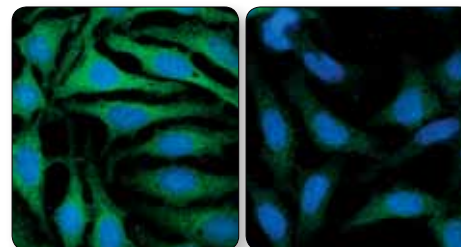
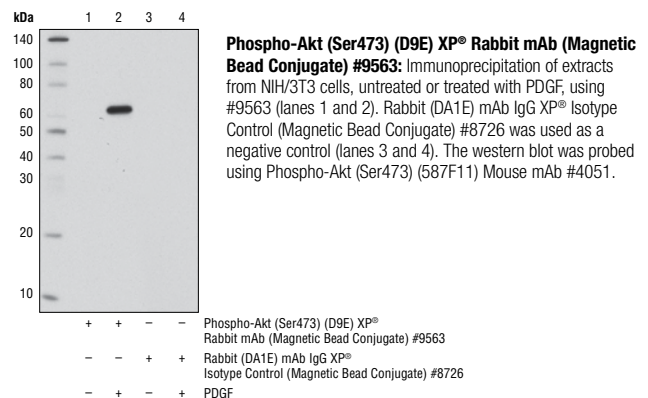
- #1145 Phospho-Akt (Thr308) Blocking Peptide
- #1140 Phospho-Akt (Ser473) Blocking Peptide
- #8101 SignalSlide® Phospho-Akt (Ser473) IHC Controls
- #9273 Akt Control Cell Extracts
- #1085 Akt (pan) Blocking Peptide
- #1060 Phospho-FoxO1 (Thr24)/FoxO3a (Thr32) Blocking Peptide
- #1027 Phospho-GSK-3α (Ser21) Blocking Peptide
- #1073 GSK-3β Blocking Peptide
- #1250 PTEN Blocking Peptide
- #8106 SignalSlide® PTEN IHC Controls

## Kinases

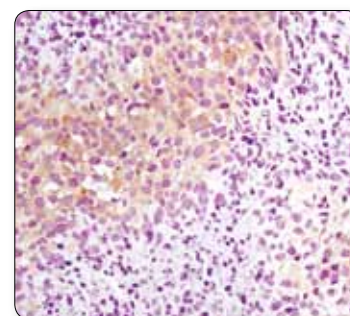
- #9840 Akt Kinase Assay Kit (Nonradioactive)

## Chemical Modulators

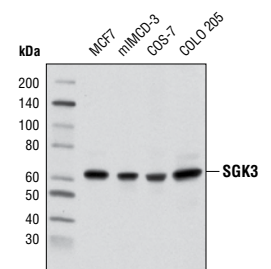
- #9901 LY294002 (PI3 Kinase Inhibitor)
- #9951 Wortmannin



**GSK-3α/β (D75D3) XP® Rabbit mAb #5676:** Confocal IF analysis of HeLa cells, mock-transfected (left) or transfected with SignalSilence® GSK-3α/β siRNA #6301 (right), using #5676 (green). Actin filaments were labeled with DY-554 phalloidin (red). Blue pseudocolor = DRAQ5® #4084 (fluorescent DNA dye).



**Phospho-PRAS40 (Thr246) (C77D7) Rabbit mAb #2997:** IHC analysis of paraffin-embedded metastatic SKOV-3 tumor in mouse lung using #2997.



**SGK3 (D18D1) Rabbit mAb #8156:** Western blot analysis of extracts from various cell lines using #8156.

**USA Headquarters**

Cell Signaling Technology, Inc.  
Tel: 978-867-2300  
E-mail: info@cellsignal.com  
www.cellsignal.com

**International Subsidiaries**

Cell Signaling Technology (China) Limited  
Tel: (86) 21-5835-6288  
E-mail: info@cst-c.com.cn  
www.cellsignal.com

Cell Signaling Technology Europe  
Tel: +31 (0)71 568 1060  
E-mail: info@cellsignal.eu  
www.cellsignal.com

Cell Signaling Technology Japan, K.K.  
Tel: 03-3295-16300  
E-mail: info@cstj.co.jp  
www.cstj.co.jp

**Supporting Products**

**Antibody Sampler Kits**

- #9962 Epitope Tag Antibody Sampler Kit
- #5142 Loading Control Antibody Sampler Kit
- #4670 Loading Control Antibody Sampler Kit (HRP Conjugate)

**Secondary Antibodies and Detection Reagents**

- #7071 Phototope®-HRP Western Blot Detection System, Anti-rabbit IgG, HRP-linked Antibody
- #7072 Phototope®-HRP Western Blot Detection System, Anti-mouse IgG, HRP-linked Antibody
- #4929 Albumin Antibody
- #5597 Anti-biotin (D5A7) Rabbit mAb
- #5571 Anti-biotin (D5A7) Rabbit mAb (HRP Conjugate)
- #7055 Anti-biotin, AP-linked Antibody
- #7075 Anti-biotin, HRP-linked Antibody
- New** #9863 Protein A Agarose Beads
- New** #8687 Protein A Magnetic Beads
- New** #8740 Protein G Magnetic Beads
- #7054 Anti-rabbit IgG, AP-linked Antibody
- #7074 Anti-rabbit IgG, HRP-linked Antibody
- #4412 Anti-rabbit IgG (H+L), F(ab)<sup>2</sup> Fragment (Alexa Fluor® 488 Conjugate)
- #4413 Anti-rabbit IgG (H+L), F(ab)<sup>2</sup> Fragment (Alexa Fluor® 555 Conjugate)
- #4414 Anti-rabbit IgG (H+L), F(ab)<sup>2</sup> Fragment (Alexa Fluor® 647 Conjugate)
- #6990 Anti-rabbit IgG F(ab)<sup>2</sup> Fragment (Sephacose Bead Conjugate)
- #5366 Anti-rabbit IgG (H+L) (DyLight® 680 Conjugate)
- #5151 Anti-rabbit IgG (H+L) (DyLight® 800 Conjugate)
- #3678 Mouse Anti-rabbit IgG (Conformation Specific) (L27A9) mAb
- New** #5127 Mouse Anti-rabbit IgG (Conformation Specific) (L27A9) mAb (HRP Conjugate)
- #3677 Mouse Anti-rabbit IgG (Light-Chain Specific) (L57A3) mAb
- #7056 Anti-mouse IgG, AP-linked Antibody
- #7076 Anti-mouse IgG, HRP-linked Antibody
- #4408 Anti-mouse IgG (H+L), F(ab)<sup>2</sup> Fragment (Alexa Fluor® 488 Conjugate)
- #4409 Anti-mouse IgG (H+L), F(ab)<sup>2</sup> Fragment (Alexa Fluor® 555 Conjugate)
- #4410 Anti-mouse IgG (H+L), F(ab)<sup>2</sup> Fragment (Alexa Fluor® 647 Conjugate)
- #5946 Anti-mouse IgG (H+L), F(ab)<sup>2</sup> Fragment (Sephacose Bead Conjugate)
- #5470 Anti-mouse IgG (H+L) (DyLight® 680 Conjugate)
- #5257 Anti-mouse IgG (H+L) (DyLight® 800 Conjugate)
- #7077 Anti-rat IgG, HRP-linked Antibody
- #4416 Anti-rat IgG (H+L), (Alexa Fluor® 488 Conjugate)
- #4417 Anti-rat IgG (H+L), (Alexa Fluor® 555 Conjugate)
- #4418 Anti-rat IgG (H+L), (Alexa Fluor® 647 Conjugate)
- #8125 SignalStain® Boost IHC Detection Reagent (HRP, Mouse)
- #8114 SignalStain® Boost IHC Detection Reagent (HRP, Rabbit)
- #8112 SignalStain® Antibody Diluent
- #3419 Streptavidin (Sephacose Bead Conjugate)
- #3999 Streptavidin-HRP

**Buffers and Related Products**

- #7003 20X LumiGLO® Reagent and 20X Peroxide
- #9998 BSA
- #9803 Cell Lysis Buffer (10X)
- #9852 Chaps Cell Extract Buffer (10X)
- New** #9871 20 mM Citrate pH 3.0 (Sterile)
- #4083 DAPI
- #4084 DRAQ5®
- New** #7406 DRAQ7™
- #4082 Hoechst #33342
- #5425 Normal Goat Serum
- #9999 Nonfat Dry Milk
- #7722 Blue Loading Buffer Pack
- #7723 Red Loading Buffer Pack
- New** #9872 Phosphate Buffered Saline (PBS-1X) pH7.2 (Sterile)
- #9808 Phosphate Buffered Saline (PBS-20X)
- #9809 Phosphate Buffered Saline with Tween 20 (PBST-20X)
- #5870 Phosphatase Inhibitor Cocktail (100X)
- #5871 Protease Inhibitor Cocktail (100X)
- #5872 Protease/Phosphatase Inhibitor Cocktail (100X)
- #7727 Biotinylated Protein Ladder Detection Pack
- #7720 Prestained Protein Marker, Broad Range (Premixed Format)
- #4087 Propidium Iodide (PI)/RNase Staining Solution
- #9806 RIPA Buffer (10X)
- #6883 SignalFire™ ECL Reagent
- #7002 STOP Solution
- #7004 TMB Substrate
- #4050 Tris-Glycine SDS Running Buffer (10X)
- #9997 Tris Buffered Saline with Tween 20 (TBST-10X)

**Isotype Controls**

- XP** #3900 Rabbit (DA1E) mAb IgG XP® Isotype Control
- XP** #2975 Rabbit (DA1E) mAb IgG XP® Isotype Control (Alexa Fluor® 488 Conjugate)
- New** #3969 Rabbit (DA1E) mAb IgG XP® Isotype Control (Alexa Fluor® 555 Conjugate)
- XP** #2985 Rabbit (DA1E) mAb IgG XP® Isotype Control (Alexa Fluor® 647 Conjugate)
- XP** #4096 Rabbit (DA1E) mAb IgG XP® Isotype Control (Biotinylated)
- XP** #3423 Rabbit (DA1E) mAb IgG XP® Isotype Control (Sephacose Bead Conjugate)
- XP** #8726 Rabbit (DA1E) mAb IgG XP® Isotype Control (Magnetic Bead Conjugate)
- XP** #5742 Rabbit (DA1E) mAb IgG XP® Isotype Control (PE Conjugate)
- #2729 Normal Rabbit IgG
- #4340 Rabbit IgG Isotype Control (Alexa Fluor® 488 Conjugate)
- #3452 Rabbit IgG Isotype Control (Alexa Fluor® 647 Conjugate)
- #3420 Mouse IgG (Sephacose Bead Conjugate)
- #5873 Mouse IgG (Magnetic Bead Conjugate)
- #5415 Mouse (G3A1) mAb IgG1 Isotype Control
- New** #9641 Mouse (G3A1) mAb IgG1 Isotype Control (Alexa Fluor® 555 Conjugate)
- #6899 Mouse (G3A1) mAb IgG1 Isotype Control (PE Conjugate)
- #4878 Mouse (MOPC-21) mAb IgG1 Isotype Control (Alexa Fluor® 488 Conjugate)
- #4843 Mouse (MOPC-21) mAb IgG1 Isotype control (Alexa Fluor® 647 Conjugate)
- #4097 Mouse (MOPC-21) mAb IgG1 Isotype Control (Biotinylated)

**Epitope Tag Antibodies**

- New** #8146 DYKDDDDK Tag (9A3) Mouse mAb (Binds to same epitope as Sigma's Anti-FLAG® M2 Antibody)
- #2368 DYKDDDDK Tag Antibody (Binds to same epitope as Sigma's Anti-FLAG® M2 Antibody)
- #2044 DYKDDDDK Tag Antibody (Binds to same epitope as Sigma's Anti-FLAG® M2 Antibody) (HRP Conjugate)
- #5407 DYKDDDDK Tag Antibody (Binds to same epitope as Sigma's Anti-FLAG® M2 Antibody) (Alexa Fluor® 488 Conjugate)
- #3768 DYKDDDDK Tag Antibody (Binds to same epitope as Sigma's Anti-FLAG® M2 Antibody) (Alexa Fluor® 555 Conjugate)
- New** #9696 DYKDDDDK Tag Antibody (Binds to same epitope as Sigma's Anti-FLAG® M2 Antibody) (Alexa Fluor® 594 Conjugate)
- #2908 DYKDDDDK Tag Antibody (Binds to same epitope as Sigma's Anti-FLAG® M2 Antibody) (Biotinylated)
- #2372 β-Gal (14B7) Mouse mAb
- XP** #2956 GFP (D5.1) XP® Rabbit mAb
- XP** #2912 GFP (D5.1) XP® Rabbit mAb (Biotinylated)
- XP** #2037 GFP (D5.1) XP® Rabbit mAb (HRP Conjugate)
- #2555 GFP Antibody
- #2955 GFP (4B10) Mouse mAb
- #9325 GSK-3β-Tag Antibody
- #2625 GST (91G1) Rabbit mAb
- #5746 GST (91G1) Rabbit mAb (Biotinylated)
- #5475 GST (91G1) Rabbit mAb (HRP Conjugate)
- #2624 GST (26H1) Mouse mAb
- #3368 GST (26H1) Mouse mAb (Alexa Fluor® 488 Conjugate)
- #3720 GST (26H1) Mouse mAb (Alexa Fluor® 555 Conjugate)
- #3445 GST (26H1) Mouse mAb (Alexa Fluor® 647 Conjugate)
- #3513 GST (26H1) Mouse mAb (Sephacose Bead Conjugate)
- #2622 GST Antibody
- #2448 Glu-Glu Tag Antibody
- #3724 HA-Tag (C29F4) Rabbit mAb
- #3956 HA-Tag (C29F4) Rabbit mAb (Sephacose Bead Conjugate)
- #5017 HA-Tag (C29F4) Rabbit mAb (Biotinylated)
- #2367 HA-Tag (6E2) Mouse mAb
- #2350 HA-Tag (6E2) Mouse mAb (Alexa Fluor® 488 Conjugate)
- #3444 HA-Tag (6E2) Mouse mAb (Alexa Fluor® 647 Conjugate)
- #2999 HA-Tag (6E2) Mouse mAb (HRP Conjugate)
- #2365 His-Tag Antibody
- #2366 His-Tag (27E8) Mouse mAb
- #4079 His-Tag (27E8) Mouse mAb (Sephacose Bead Conjugate)
- #2396 MBP (8G1) Mouse mAb
- #2278 Myc-Tag (71D10) Rabbit mAb
- #2946 Myc-Tag (71D10) Rabbit mAb (Biotinylated)
- #2272 Myc-Tag Antibody
- #2276 Myc-Tag (9B11) Mouse mAb
- #2279 Myc-Tag (9B11) Mouse mAb (Alexa Fluor® 488 Conjugate)
- #3756 Myc-Tag (9B11) Mouse mAb (Alexa Fluor® 555 Conjugate)
- New** #9483 Myc-Tag (9B11) Mouse mAb (Alexa Fluor® 594 Conjugate)
- #2233 Myc-Tag (9B11) Mouse mAb (Alexa Fluor® 647 Conjugate)
- #2040 Myc-Tag (9B11) Mouse mAb (HRP Conjugate)
- #3400 Myc-Tag (9B11) Mouse mAb (Sephacose Bead Conjugate)
- #5698 Myc-Tag (9B11) Mouse mAb (Magnetic Bead Conjugate)
- New** #3739 Myc-Tag (9B11) Mouse mAb (PE Conjugate)
- New** #8476 S-Tag Antibody
- #2547 Tat (8C2) Mouse mAb