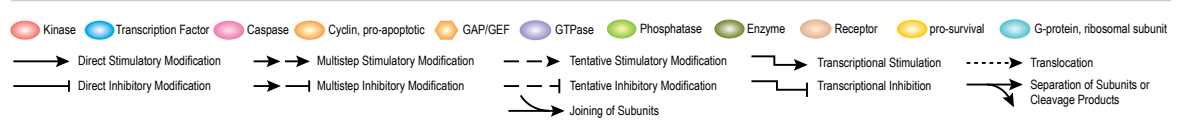
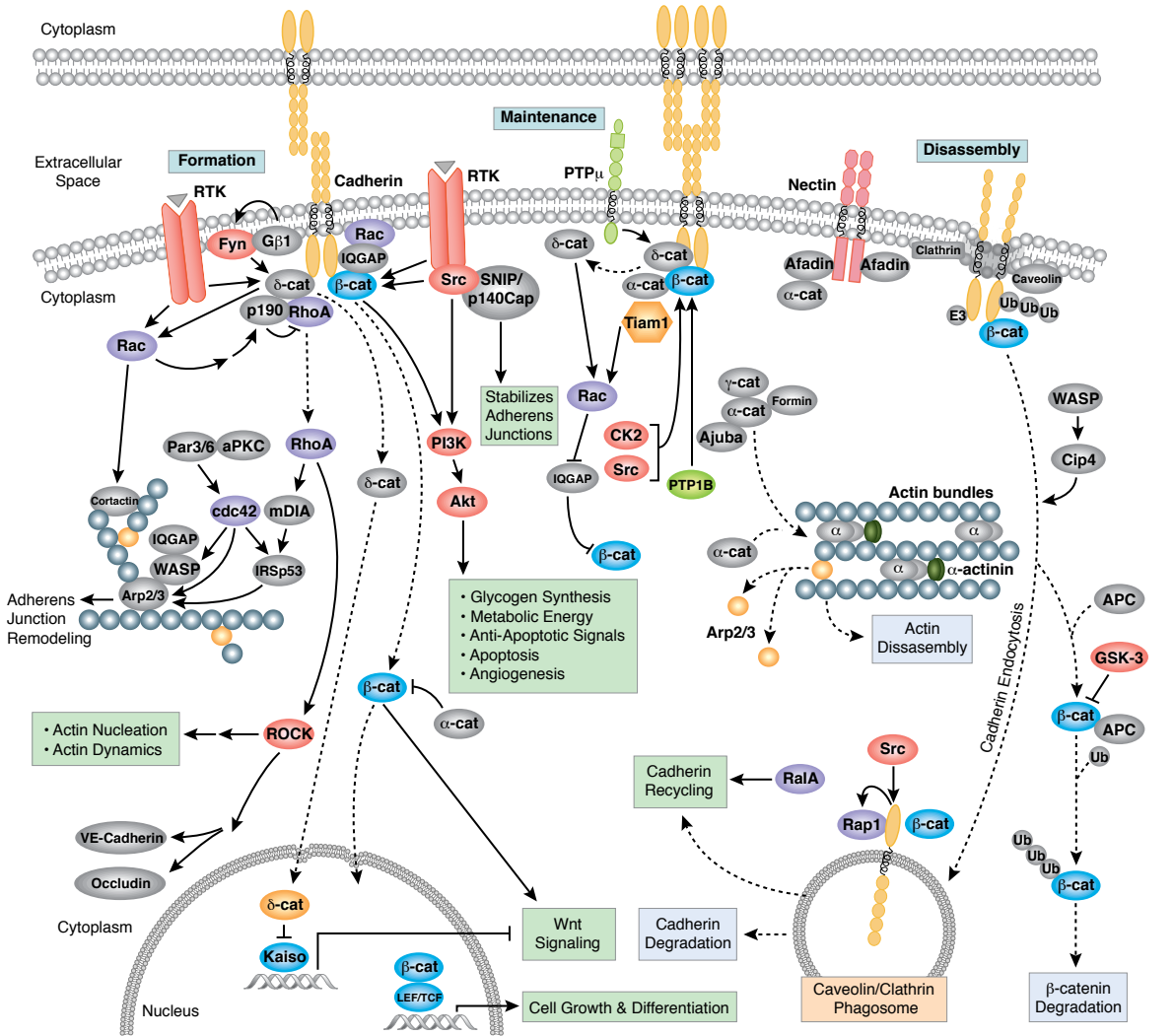


Antibodies and Related Reagents for Adhesion

Product Pathways

- Motif Antibodies
- Chromatin Regulation
- MAP Kinase Signaling
- Apoptosis and Autophagy
- PI3K / Akt Signaling
- Cellular Metabolism
- Translational Control
- Development and Differentiation
- Stem Cell and Lineage Markers
- Ca²⁺, cAMP, and Lipid Signaling
- Cell Cycle/Checkpoint Control
- NF-κB Signaling
- Lymphocyte Signaling
- Neuroscience
- Tyrosine Kinases and Docking Proteins
- Angiogenesis
- Nuclear Receptors and Phosphatases
- Cytoskeletal Signaling
- > Adhesion
- Protein Folding and Stability

Adherens Junction Dynamics



For Research Use Only.
Not For Use In
Diagnostic Procedures.

Antibody Sampler Kits

#9961 Cadherin-Catenin Antibody Sampler Kit

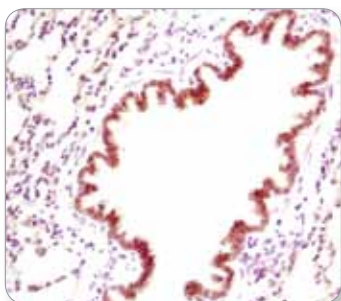
#9782 Epithelial-Mesenchymal Transition (EMT) Antibody Sampler Kit

#9330 FAK Antibody Sampler Kit

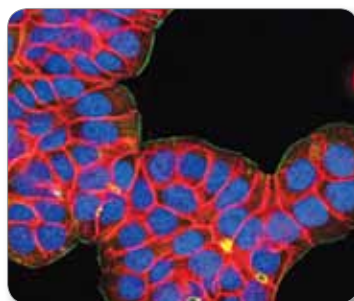
#4749 Integrin Antibody Sampler Kit

Antibodies

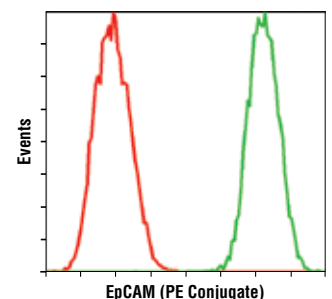
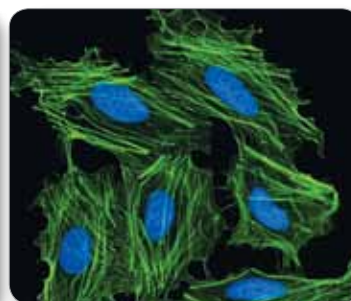
	Application	Reactivity
#2099 ADAM9 Antibody	W, IP	H, M, R, Mk
#5485 Phospho-Afadin (Ser1718) Antibody	W	H, (M, R, Mk, Dg)
#4897 Ajuba Antibody	W, IP, F	H, M, Mk, B, (R)
#2171 Alix (3A9) Mouse mAb	W, IP	H, M, R, Mk
XP #5601 βIG-H3 (D31B8) XP® Rabbit mAb	W, IP, IF-IC	H
#2719 βIG-H3 Antibody	W, IP, IF-IC	H, (Mk)
#5468 BSP II Antibody	W, IP	H, M, R
#4073 Pan-Cadherin (28E12) Rabbit mAb	W	H, M, R
#4068 Pan-Cadherin Antibody	W, IP, IHC-P	H, M, R, Mk, Dm, Z, B
#3195 E-Cadherin (24E10) Rabbit mAb	W, IHC-P, IHC-F, IF-IC, F	H, M, (Dg, Pg)
#3199 E-Cadherin (24E10) Rabbit mAb (Alexa Fluor® 488 Conjugate)	IF-IC, IF-P, F	H, M, (Dg)
#4295 E-Cadherin (24E10) Rabbit mAb (Alexa Fluor® 555 Conjugate)	IF-IC	H, M, (Dg)
#9835 E-Cadherin (24E10) Rabbit mAb (Alexa Fluor® 647 Conjugate)	F	H, M, (Dg)
New #7559 E-Cadherin (24E10) Rabbit mAb (PE Conjugate)	F	H, M, (Dg, Pg)
#4065 E-Cadherin Antibody	W, IP, IHC-P, IF-IC	H, M, (B, Dg)
#5296 E-Cadherin (32A8) Mouse mAb	W, IP	H
#4061 N-Cadherin Antibody	W	H, M, R, Mk
#4442 OB-Cadherin (P707) Antibody	W, IP, IF-IC	H, M, R, (Mk)
#2189 P-Cadherin (C13F9) Rabbit mAb	W, IF-IC	H, (Mk)
#2130 P-Cadherin Antibody	W, IP, IF-IC, F	H
XP #2500 VE-Cadherin (D87F2) XP® Rabbit mAb	W, IP, IF-IC, F	H, Dm, B, Pg, (Mk)
#2158 VE-Cadherin Antibody	W, IF-IC	H, Dm, B
#3240 α-E-Catenin (23B2) Rabbit mAb	W, IP	H, M, Mk
#3236 α-E-Catenin Antibody	W, IF-IC	H, M, R
#2163 α-N-Catenin (C12G4) Rabbit mAb	W, IP, IF-IC	H, M, R
#2131 α-N-Catenin Antibody	W, IP, IF-IC, F	H, M, R
#2309 γ-Catenin Antibody	W, IP, IHC-P, IF-IC	H, M, R, Hm, Mk
#2911 Phospho-Catenin δ-1 (Tyr228) Antibody	W, IF-IC	H
#8477 Phospho-Catenin δ-1 (Ser252) Antibody	W	H, (M, R, Mk)
New #8016 Phospho-Catenin δ-1 (Ser320) Antibody	W, IP	H, (M, R, Mk)
#2910 Phospho-Catenin δ-1 (Tyr904) Antibody	W	H
#4989 Catenin δ-1 Antibody	W, F	H, M, R
#3251 Phospho-Caveolin-1 (Tyr14) Antibody	W	H, M, R, Mk, (Dg)



E-Cadherin (24E10) Rabbit mAb #3195: IHC analysis of paraffin-embedded mouse lung using #3195.



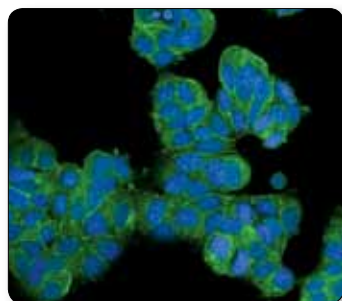
EpCAM (VU1D9) Mouse mAb (Alexa Fluor® 594 Conjugate) #7319: Confocal IF analysis of HT-29 (left) and HeLa (right) cells using #7319 (red). Actin filaments were labeled with Alexa Fluor® 488 phalloidin (green). Blue pseudocolor = DRAQ5® #4084 (fluorescent DNA dye).



EpCAM (VU1D9) Mouse mAb (PE Conjugate) #8995: Flow cytometric analysis of unpermeabilized HT-29 cells using #8995 (green) compared to concentration-matched Mouse (G3A1) mAb IgG1 Isotype Control (PE Conjugate) #6899 (red).

	Application	Reactivity
#3238 Caveolin-1 Antibody	W, IP, IHC-P, IHC-F, IF-IC, F	H, M, R, Hm, Z, B, Pg
#3570 CD44 (156-3C11) Mouse mAb	W, IP, IHC-P, IF-IC, F	H
#8724 CD44 (156-3C11) Mouse mAb (PE Conjugate)	F	H
#3578 CD44 Antibody	W	H
#5640 CD44 (8E2) Mouse mAb	W, IP, IF-IC, F	H, M, R
#4915 CD54 (ICAM-1) Antibody	W, IHC-P	H
#4115 CDCP1 Antibody	W, IP, IF-IC	H
New #5441 CEACAM1 Antibody	W, IP	H
#2383 CEA/CD66e (CB30) Mouse mAb	W, IHC-P, IF-IC, F	H
#4933 Claudin-1 Antibody	W, IP	H, (M, R)
#3511 Phospho-Connexin 43 (Ser368) Antibody	W	H, M, R, Hm, Mk, Dg, (Pg)
#3512 Connexin 43 Antibody	W, IHC-P, IHC-F, IF-F, IF-IC	H, M, R, Mk, Z, (Dg, Pg)
#4515 Cool1/βPix Antibody	W, IP	H, M, R, Hm, Mk
#4573 Cool2/αPix (C23D2) Rabbit mAb	W, IF-IC	H, M, (R, Dg)
#5885 Phospho-Desmoplakin (Ser165/166) Antibody	W	H, M, R, Mk
#4846 DOCK180 (C4C12) Rabbit mAb	W, IP	H, M, R
#2929 EpCAM (VU1D9) Mouse mAb	W, IHC-P, IF-IC, F	H
#5198 EpCAM (VU1D9) Mouse mAb (Alexa Fluor® 488 Conjugate)	IF-IC, F	H
#5488 EpCAM (VU1D9) Mouse mAb (Alexa Fluor® 555 Conjugate)	IF-IC	H
New #7319 EpCAM (VU1D9) Mouse mAb (Alexa Fluor® 594 Conjugate)	IF-IC	H
#5447 EpCAM (VU1D9) Mouse mAb (Alexa Fluor® 647 Conjugate)	IF-IC, F	H
New #8995 EpCAM (VU1D9) Mouse mAb (PE Conjugate)	F	H
#3599 EpCAM Antibody	W	H
#8556 Phospho-FAK (Tyr397) (D20B1) Rabbit mAb	W, IP	H, (M, R, Mk)
#3283 Phospho-FAK (Tyr397) Antibody	W	H, M, R, Hm, Pg
#3281 Phospho-FAK (Tyr576/577) Antibody	W, IP	H, M, R, (C, X)
#3284 Phospho-FAK (Tyr925) Antibody	W, IP, IF-IC	H, (M, R, C)
#3285 FAK Antibody	W, IP, IHC-P	H, M, R, Mk, B, Pg, (C)
#2919 GIT-1 Antibody	W, IP	H, M, R, Hm, Mk, B
New #8072 GIT2 (D11B8) Rabbit mAb	W	H, M, Mk
#6953 GIT2 Antibody	W	H, Mk
#4044 HEF1/NEDD9 (2G9) Mouse mAb	W, IP	H, M, R, Mk
#4914 Hic-5 Antibody	W, IP	H, Mk, B
#3856 ILK1 (4G9) Rabbit mAb	W, IP	H, M, R, Hm, Mk, Z, B, Pg
#3862 ILK1 Antibody	W, IHC-P	H, M, R, Mk, B
#4600 Integrin α4 Antibody	W, IP	H
#4705 Integrin α5 Antibody	W	H, M, Mk

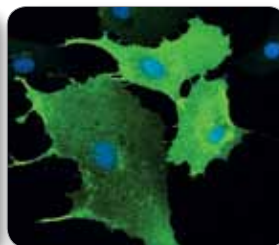
		Application	Reactivity
#4711	Integrin α V Antibody	W, IP	H, R
#3750	Integrin α 6 Antibody	W	H, M, R, Mk
#4703	Integrin α 9 β 1 (Y9A2) Mouse mAb	IP, F	H
#4706	Integrin β 1 Antibody	W	H, M, R, Mk
#4702	Integrin β 3 Antibody	W	H, M, R, Mk, B
#4707	Integrin β 4 Antibody	W	H
#3629	Integrin beta5 (D24A5) Rabbit mAb	W, IP	H, M, R, Mk
#4708	Integrin β 5 Antibody	W, IP, IF-IC	H
#9596	Lyric/Metadherin (2F11C3) Mouse mAb	W, IP	H, Mk
#4538	MUC1 (VU4H5) Mouse mAb	W, IP, IHC-P, IF-IC, F	H
#3606	NCAM (CD56) Antibody	W	H, M, R
#3576	CD56 (NCAM) (123C3) Mouse mAb	W, IHC-P, IF-IC, F	H
#5446	Occludin (D15G7) Rabbit mAb	W	H, Mk
#5506	Occludin Antibody	W	H, Mk, (Dg)
XP #8190	α -Parvin (D7F9) XP [®] Rabbit mAb	W, IP, IF-IC	H, M, R, Mk, Dg
#4026	α -Parvin Antibody	W, IF-IC	H, M, R, Hm, Mk, Dg
#2541	Phospho-Paxillin (Tyr118) Antibody	W, IF-IC	H, M, R, Mk
#2542	Paxillin Antibody	W	H, M, R, Mk, B, Pg
#2863	Plectin-1 Antibody	W, IF-IC	H, Mk
#4481	Phospho-PTP α (Tyr789) Antibody	W, IP	H, M, R, Mk
#4485	PTPmu (BK2) Mouse mAb	W, IP	H, R, Mi, (M)
#4864	PTP-PEST (AG10) Mouse mAb	W, IP	H, M, R, Mk
New #8131	Phospho-PZR (Tyr241) (D6F9) Rabbit mAb	W, IP, IF-IC, F	H, M, R, B
New #8088	Phospho-PZR (Tyr263) (D6A5) Rabbit mAb	W, IP, IF-IC, F	H, M, R, B
#5543	Phospho-PZR (Tyr263) Antibody	W, IP	H, M, R, B
New XP #9893	PZR (D17B10) XP [®] Rabbit mAb	W, IP, IF-IC	H
#4157	PZR Antibody	W, IP	H, Mk
#2399	Rap1A/Rap1B (26B4) Rabbit mAb	W	H, M, R, Mk, B
#4938	Rap1A/Rap1B Antibody	W, F	H, M, R, Mk, B
#2326	Rap1B (36E1) Rabbit mAb	W	H, M, R, Mk, B, Pg
#4475	Scribble Antibody	W, IP	H, Mk
#3757	SNIP/p140Cap Antibody	W	H, M, R, (Mk)
#5426	Phospho-Talin (Ser425) Antibody	W	H, M, R, Mk
#4021	Talin-1 (C45F1) Rabbit mAb	W	H, M, R, Hm, Mk
#9798	Thy1 Antibody	W, IP	H, M, R
#4650	Vinculin Antibody	W	H, M, R, Mk, Dg
New #8193	ZO-1 (D7D12) Rabbit mAb	W, IP	H, Mk
#5406	ZO-1 Antibody	W	H, Mk
#2847	ZO-2 Antibody	W, IF-IC	H, M, R, Mk, B, Dg
XP #3704	ZO-3 (D57G7) XP [®] Rabbit mAb	W, IF-IC	H
New #8467	Phospho-Zyxin (Ser142/143) (D1E8) Rabbit mAb	W, IP	H, M, R, Mk, Dg
#4863	Phospho-Zyxin (Ser142/143) Antibody	W	H, Mk
#3553	Zyxin Antibody	W	H, M, Mk



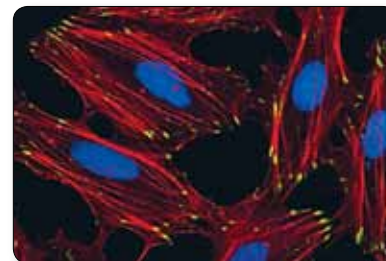
PZR (D17B10) XP[®] Rabbit mAb #9893: Confocal IF analysis of MCF7 cells using #9893 (green). Blue pseudocolor = DRAQ5[®] #4084 (fluorescent DNA dye).



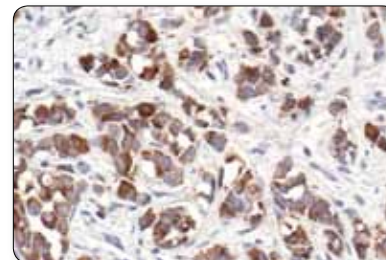
Phospho-PZR (Tyr263) (D6A5) Rabbit mAb #8088: Confocal IF analysis of BAE cells, untreated (left) or H₂O₂-treated (2 mM, 30 min; right), using #8088 (green). Blue pseudocolor = DRAQ5[®] #4084 (fluorescent DNA dye).



MUC1 (VU4H5) Mouse mAb #4538: IHC analysis of paraffin-embedded human breast carcinoma using #4538.



α -Parvin (D7F9) XP[®] Rabbit mAb #8190: Confocal IF analysis of HeLa cells using #8190 (green). Actin filaments were labeled with DY-554 phalloidin (red). Blue pseudocolor = DRAQ5[®] #4084 (fluorescent DNA dye).



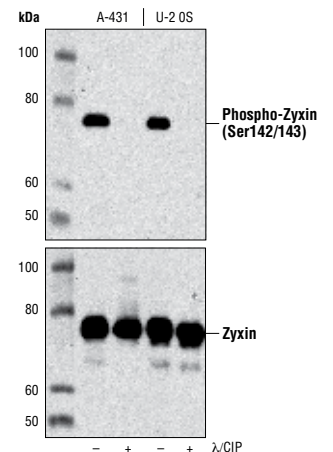
PathScan [®] Sandwich ELISA	Application	Reactivity
#7886 PathScan [®] Total E-Cadherin Sandwich ELISA Kit	ELISA	H
#7887 PathScan [®] Total E-Cadherin Sandwich ELISA Antibody Pair	ELISA	H

SignalSilence [®] siRNA	Application	Reactivity
#6226 SignalSilence [®] γ -Catenin siRNA I		H
#6239 SignalSilence [®] γ -Catenin siRNA II		H
#6472 SignalSilence [®] FAK siRNA I		H
#6483 SignalSilence [®] FAK siRNA II		H
#6202 SignalSilence [®] ILK1 siRNA I		H, (M, R)
#6528 SignalSilence [®] ILK1 siRNA II		H

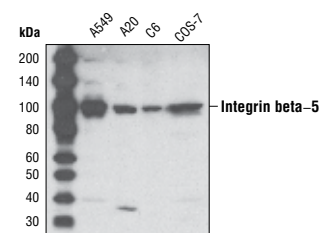
Controls	Application	Reactivity
#1056 E-Cadherin Blocking Peptide		

Applications: W=Western Blot IP=Immunoprecipitation IHC=Immunohistochemistry F=Flow Cytometry IF=Immunofluorescence ChIP=Chromatin Immunoprecipitation (-IC Immunocytochemistry, -P Paraffin, -F Frozen)

Reactivity: H=Human M=Mouse R=Rat Mk=Monkey Mi=Mink Pg=Pig C=Chicken Hm=Hamster B=Bovine Dm=D. melanogaster X=Xenopus Z=Zebrafish Dg=Dog Species enclosed in parentheses are predicted to react based on 100% sequence homology.



Phospho-Zyxin (Ser142/143) (D1E8) Rabbit mAb #8467 and Zyxin Antibody #3553: Western blot analysis of extracts from A-431 and U-2 OS cells, untreated (-) or treated (+) with λ and calf intestinal phosphatase (λ /CIP), using #8467 (upper) or #3553 (lower).



Integrin beta-5 (D24A5) Rabbit mAb #3629: Western blot analysis of extracts from various cell lines using #3629.

USA Headquarters

Cell Signaling Technology, Inc.
Tel: 978-867-2300
E-mail: info@cellsignal.com
www.cellsignal.com

International Subsidiaries

Cell Signaling Technology (China) Limited
Tel: (86) 21-5835-6288
E-mail: info@cst-c.com.cn
www.cellsignal.com

Cell Signaling Technology Europe
Tel: +31 (0)71 568 1060
E-mail: info@cellsignal.eu
www.cellsignal.com

Cell Signaling Technology Japan, K.K.
Tel: 03-3295-16300
E-mail: info@cstj.co.jp
www.cstj.co.jp

Supporting Products

Antibody Sampler Kits

- #9962 Epitope Tag Antibody Sampler Kit
- #5142 Loading Control Antibody Sampler Kit
- #4670 Loading Control Antibody Sampler Kit (HRP Conjugate)

Secondary Antibodies and Detection Reagents

- #7071 Phototope®-HRP Western Blot Detection System, Anti-rabbit IgG, HRP-linked Antibody
- #7072 Phototope®-HRP Western Blot Detection System, Anti-mouse IgG, HRP-linked Antibody
- #4929 Albumin Antibody
- #5597 Anti-biotin (D5A7) Rabbit mAb
- #5571 Anti-biotin (D5A7) Rabbit mAb (HRP Conjugate)
- #7055 Anti-biotin, AP-linked Antibody
- #7075 Anti-biotin, HRP-linked Antibody
- New** #9863 Protein A Agarose Beads
- New** #8687 Protein A Magnetic Beads
- New** #8740 Protein G Magnetic Beads
- #7054 Anti-rabbit IgG, AP-linked Antibody
- #7074 Anti-rabbit IgG, HRP-linked Antibody
- #4412 Anti-rabbit IgG (H+L), F(ab)² Fragment (Alexa Fluor® 488 Conjugate)
- #4413 Anti-rabbit IgG (H+L), F(ab)² Fragment (Alexa Fluor® 555 Conjugate)
- #4414 Anti-rabbit IgG (H+L), F(ab)² Fragment (Alexa Fluor® 647 Conjugate)
- #6990 Anti-rabbit IgG F(ab)² Fragment (Sephacryl Bead Conjugate)
- #5366 Anti-rabbit IgG (H+L) (DyLight® 680 Conjugate)
- #5151 Anti-rabbit IgG (H+L) (DyLight® 800 Conjugate)
- #3678 Mouse Anti-rabbit IgG (Conformation Specific) (L27A9) mAb
- New** #5127 Mouse Anti-rabbit IgG (Conformation Specific) (L27A9) mAb (HRP Conjugate)
- #3677 Mouse Anti-rabbit IgG (Light-Chain Specific) (L57A3) mAb
- #7056 Anti-mouse IgG, AP-linked Antibody
- #7076 Anti-mouse IgG, HRP-linked Antibody
- #4408 Anti-mouse IgG (H+L), F(ab)² Fragment (Alexa Fluor® 488 Conjugate)
- #4409 Anti-mouse IgG (H+L), F(ab)² Fragment (Alexa Fluor® 555 Conjugate)
- #4410 Anti-mouse IgG (H+L), F(ab)² Fragment (Alexa Fluor® 647 Conjugate)
- #5946 Anti-mouse IgG (H+L), F(ab)² Fragment (Sephacryl Bead Conjugate)
- #5470 Anti-mouse IgG (H+L) (DyLight® 680 Conjugate)
- #5257 Anti-mouse IgG (H+L) (DyLight® 800 Conjugate)
- #7077 Anti-rat IgG, HRP-linked Antibody
- #4416 Anti-rat IgG (H+L), (Alexa Fluor® 488 Conjugate)
- #4417 Anti-rat IgG (H+L), (Alexa Fluor® 555 Conjugate)
- #4418 Anti-rat IgG (H+L), (Alexa Fluor® 647 Conjugate)
- #8125 SignalStain® Boost IHC Detection Reagent (HRP, Mouse)
- #8114 SignalStain® Boost IHC Detection Reagent (HRP, Rabbit)
- #8112 SignalStain® Antibody Diluent
- #3419 Streptavidin (Sephacryl Bead Conjugate)
- #3999 Streptavidin-HRP

Buffers and Related Products

- #7003 20X LumiGLO® Reagent and 20X Peroxide
- #9998 BSA
- #9803 Cell Lysis Buffer (10X)
- #9852 Chaps Cell Extract Buffer (10X)
- New** #9871 20 mM Citrate pH 3.0 (Sterile)
- #4083 DAPI
- #4084 DRAQ5®
- New** #7406 DRAQ7™
- #4082 Hoechst #33342
- #5425 Normal Goat Serum
- #9999 Nonfat Dry Milk
- #7722 Blue Loading Buffer Pack
- #7723 Red Loading Buffer Pack
- New** #9872 Phosphate Buffered Saline (PBS-1X) pH7.2 (Sterile)
- #9808 Phosphate Buffered Saline (PBS-20X)
- #9809 Phosphate Buffered Saline with Tween 20 (PBST-20X)
- #5870 Phosphatase Inhibitor Cocktail (100X)
- #5871 Protease Inhibitor Cocktail (100X)
- #5872 Protease/Phosphatase Inhibitor Cocktail (100X)
- #7727 Biotinylated Protein Ladder Detection Pack
- #7720 Prestained Protein Marker, Broad Range (Premixed Format)
- #4087 Propidium Iodide (PI)/RNase Staining Solution
- #9806 RIPA Buffer (10X)
- #6883 SignalFire™ ECL Reagent
- #7002 STOP Solution
- #7004 TMB Substrate
- #4050 Tris-Glycine SDS Running Buffer (10X)
- #9997 Tris Buffered Saline with Tween 20 (TBST-10X)

Isotype Controls

- XP** #3900 Rabbit (DA1E) mAb IgG XP® Isotype Control
- XP** #2975 Rabbit (DA1E) mAb IgG XP® Isotype Control (Alexa Fluor® 488 Conjugate)
- New** #3969 Rabbit (DA1E) mAb IgG XP® Isotype Control (Alexa Fluor® 555 Conjugate)
- XP** #2985 Rabbit (DA1E) mAb IgG XP® Isotype Control (Alexa Fluor® 647 Conjugate)
- XP** #4096 Rabbit (DA1E) mAb IgG XP® Isotype Control (Biotinylated)
- XP** #3423 Rabbit (DA1E) mAb IgG XP® Isotype Control (Sephacryl Bead Conjugate)
- XP** #8726 Rabbit (DA1E) mAb IgG XP® Isotype Control (Magnetic Bead Conjugate)
- XP** #5742 Rabbit (DA1E) mAb IgG XP® Isotype Control (PE Conjugate)
- #2729 Normal Rabbit IgG
- #4340 Rabbit IgG Isotype Control (Alexa Fluor® 488 Conjugate)
- #3452 Rabbit IgG Isotype Control (Alexa Fluor® 647 Conjugate)
- #3420 Mouse IgG (Sephacryl Bead Conjugate)
- #5873 Mouse IgG (Magnetic Bead Conjugate)
- #5415 Mouse (G3A1) mAb IgG1 Isotype Control
- New** #9641 Mouse (G3A1) mAb IgG1 Isotype Control (Alexa Fluor® 555 Conjugate)
- #6899 Mouse (G3A1) mAb IgG1 Isotype Control (PE Conjugate)
- #4878 Mouse (MOPC-21) mAb IgG1 Isotype Control (Alexa Fluor® 488 Conjugate)
- #4843 Mouse (MOPC-21) mAb IgG1 Isotype control (Alexa Fluor® 647 Conjugate)
- #4097 Mouse (MOPC-21) mAb IgG1 Isotype Control (Biotinylated)

Epitope Tag Antibodies

- New** #8146 DYKDDDDK Tag (9A3) Mouse mAb (Binds to same epitope as Sigma's Anti-FLAG® M2 Antibody)
- #2368 DYKDDDDK Tag Antibody (Binds to same epitope as Sigma's Anti-FLAG® M2 Antibody)
- #2044 DYKDDDDK Tag Antibody (Binds to same epitope as Sigma's Anti-FLAG® M2 Antibody) (HRP Conjugate)
- #5407 DYKDDDDK Tag Antibody (Binds to same epitope as Sigma's Anti-FLAG® M2 Antibody) (Alexa Fluor® 488 Conjugate)
- #3768 DYKDDDDK Tag Antibody (Binds to same epitope as Sigma's Anti-FLAG® M2 Antibody) (Alexa Fluor® 555 Conjugate)
- New** #9696 DYKDDDDK Tag Antibody (Binds to same epitope as Sigma's Anti-FLAG® M2 Antibody) (Alexa Fluor® 594 Conjugate)
- #2908 DYKDDDDK Tag Antibody (Binds to same epitope as Sigma's Anti-FLAG® M2 Antibody) (Biotinylated)
- #2372 β-Gal (1487) Mouse mAb
- XP** #2956 GFP (D5.1) XP® Rabbit mAb
- XP** #2912 GFP (D5.1) XP® Rabbit mAb (Biotinylated)
- XP** #2037 GFP (D5.1) XP® Rabbit mAb (HRP Conjugate)
- #2555 GFP Antibody
- #2955 GFP (4B10) Mouse mAb
- #9325 GSK-3β-Tag Antibody
- #2625 GST (91G1) Rabbit mAb
- #5746 GST (91G1) Rabbit mAb (Biotinylated)
- #5475 GST (91G1) Rabbit mAb (HRP Conjugate)
- #2624 GST (26H1) Mouse mAb
- #3368 GST (26H1) Mouse mAb (Alexa Fluor® 488 Conjugate)
- #3720 GST (26H1) Mouse mAb (Alexa Fluor® 555 Conjugate)
- #3445 GST (26H1) Mouse mAb (Alexa Fluor® 647 Conjugate)
- #3513 GST (26H1) Mouse mAb (Sephacryl Bead Conjugate)
- #2622 GST Antibody
- #2448 Glu-Glu Tag Antibody
- #3724 HA-Tag (C29F4) Rabbit mAb
- #3956 HA-Tag (C29F4) Rabbit mAb (Sephacryl Bead Conjugate)
- #5017 HA-Tag (C29F4) Rabbit mAb (Biotinylated)
- #2367 HA-Tag (6E2) Mouse mAb
- #2350 HA-Tag (6E2) Mouse mAb (Alexa Fluor® 488 Conjugate)
- #3444 HA-Tag (6E2) Mouse mAb (Alexa Fluor® 647 Conjugate)
- #2999 HA-Tag (6E2) Mouse mAb (HRP Conjugate)
- #2365 His-Tag Antibody
- #2366 His-Tag (27E8) Mouse mAb
- #4079 His-Tag (27E8) Mouse mAb (Sephacryl Bead Conjugate)
- #2396 MBP (8G1) Mouse mAb
- #2278 Myc-Tag (71D10) Rabbit mAb
- #3946 Myc-Tag (71D10) Rabbit mAb (Biotinylated)
- #2272 Myc-Tag Antibody
- #2276 Myc-Tag (9B11) Mouse mAb
- #2279 Myc-Tag (9B11) Mouse mAb (Alexa Fluor® 488 Conjugate)
- #3756 Myc-Tag (9B11) Mouse mAb (Alexa Fluor® 555 Conjugate)
- New** #9483 Myc-Tag (9B11) Mouse mAb (Alexa Fluor® 594 Conjugate)
- #2233 Myc-Tag (9B11) Mouse mAb (Alexa Fluor® 647 Conjugate)
- #2040 Myc-Tag (9B11) Mouse mAb (HRP Conjugate)
- #3400 Myc-Tag (9B11) Mouse mAb (Sephacryl Bead Conjugate)
- #5698 Myc-Tag (9B11) Mouse mAb (Magnetic Bead Conjugate)
- New** #3739 Myc-Tag (9B11) Mouse mAb (PE Conjugate)
- New** #8476 S-Tag Antibody
- #2547 Tat (8C2) Mouse mAb