

Nucleus surrounded by endoplasmic reticulum and Golgi from which vesicles are budding off along microtubule scaffolding.

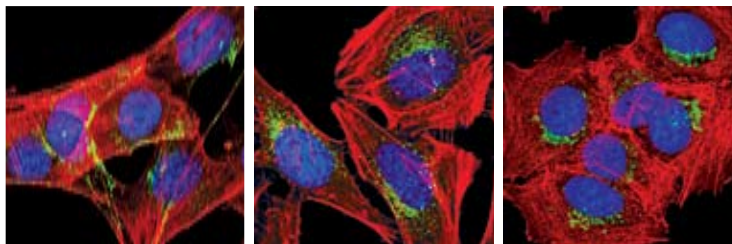
The highest quality Antibodies for the study of

Vesicle Trafficking

from Cell Signaling Technology®

Unparalleled product quality, validation and technical support

- Cell Signaling Technology's innovative products offer unsurpassed sensitivity, specificity, reproducibility and performance.
- Extensive in-house validation means that optimization is not left up to you.
- Technical support provided by the same scientists who produce and validate the products translates into a thorough, fast and accurate response.



A. Caveolae

B. Early Endosome

C. Golgi

Confocal immunofluorescent analysis of **A.** C2C12 cells using Caveolin-1 (D46G3) XP™ Rabbit mAb #3267 (green), **B.** HeLa cells using EEA1 (C45B10) Rabbit mAb #3288 (green) and **C.** MCF-7 cells using Syntaxin 6 (C34B2) Rabbit mAb #2869 (green). Actin filaments have been labeled with DY-554 phalloidin (red). Blue pseudocolor = DRAQS® #4084 (fluorescent DNA dye).

for quality products you can trust...

www.cellsignal.com



Cell Signaling

TECHNOLOGY®