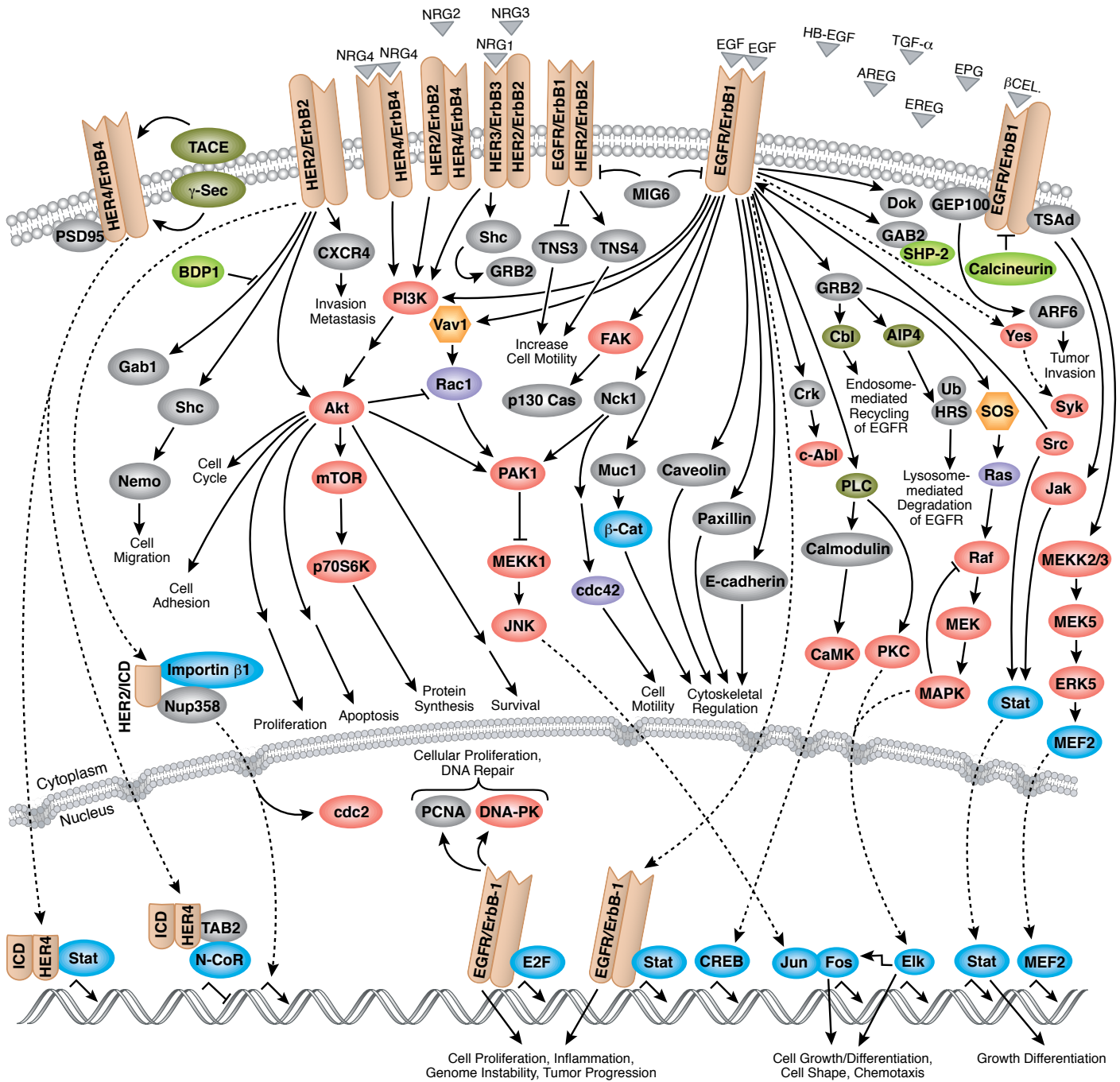


Receptor Tyrosine Kinase Signaling

ErbB/HER Signaling



Key Products for Receptor Tyrosine Kinase Signaling

Visit www.cellsignal.com/rtklist for full listing of antibodies, related kits, and reagents.

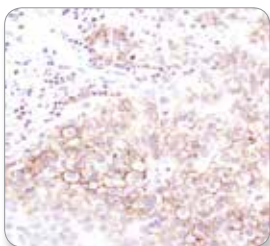
ANTIBODIES

APPLICATIONS REACTIVITY

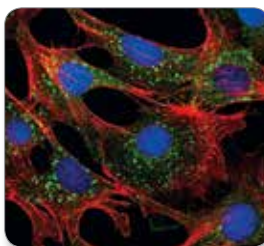
CELL SURFACE RECEPTORS

#3633 ALK (D5F3 [®]) XP [®] Rabbit mAb	WB, IP, IHC-P, IF-IC, F	H
#54359 EGF Receptor (D1D4J) XP [®] Rabbit mAb (Neutralizing)	WB, IP, IF-IC, F, N	H, M
#4267 EGF Receptor (D38B1) XP [®] Rabbit mAb	WB, IP, IHC-P, IF-IC, F	H, M, Mk
#5616 EGF Receptor (D38B1) XP [®] Rabbit mAb (Alexa Fluor [®] 488 Conjugate)	IF-IC, F	H, M, Mk
#3777 Phospho-EGF Receptor (Tyr1068) (D7A5) XP [®] Rabbit mAb	WB, IHC-P, IF-IC, F	H, M, R, Mk
#4290 HER2/ErbB2 (D8F12) XP [®] Rabbit mAb	WB, IHC-P	H, M, (R)
#2165 HER2/ErbB2 (29D8) Rabbit mAb	WB, IP, IHC-P, IHC-F, IF-IC, F	H, M, (R)
#6942 Phospho-HER2/ErbB2 (Tyr1196) (D66B7) Rabbit mAb	WB, IP	H, M
#2243 Phospho-HER2/ErbB2 (Tyr1221/1222) (6B12) Rabbit mAb	WB, IHC-P, IHC-F	H, M
#12708 HER3/ErbB3 (D22C5) XP [®] Rabbit mAb	WB, IP, IHC-P, IF-IC, F	H, M, (R)
#4784 Phospho-HER3/ErbB3 (Tyr1222) (50C2) Rabbit mAb	WB	H, M
#2842 Phospho-HER3/ErbB3 (Tyr1289) (D1B5) Rabbit mAb	WB, IP, IHC-P	H, M, (R)
#4795 HER4/ErbB4 (111B2) Rabbit mAb	WB, IP	H, M, (R)
#4757 Phospho-HER4/ErbB4 (Tyr1284) (21A9) Rabbit mAb	WB	H, (M, R)
#3790 Phospho-HER4/ErbB4 (Tyr984) Antibody	WB	H, (M, R)
#3287 ROS1 (D4D6 [®]) Rabbit mAb	WB, IP, IHC-P, IF-IC, F	H
#2893 VEGF Receptor 1 Antibody	WB	H
#2479 VEGF Receptor 2 (55B11) Rabbit mAb	WB, IP, IHC-P, IF-F, IF-IC	H, M, (B)
#3817 Phospho-VEGF Receptor 2 (Tyr1059) (D5A6) Rabbit mAb	WB	H, M, (R)
#2478 Phospho-VEGF Receptor 2 (Tyr1175) (19A10) Rabbit mAb	WB, IHC-P, IF-IC	H, M
#2638 VEGF Receptor 3 (C28G5) Rabbit mAb	WB	H
SIGNALING PROTEINS		
#2965 Phospho-Akt (Thr308) (C31E5E) Rabbit mAb	WB, IF-IC, F	H, M, R, Hm, Mk
#4060 Phospho-Akt (Ser473) (D9E) XP [®] Rabbit mAb	WB, IP, IHC-P, IHC-F, IF-IC, F	H, M, R, Hm, Mk, Dm, Z, B, (C, X, Dg, Pg)
#4075 Phospho-Akt (Ser473) (D9E) XP [®] Rabbit mAb (Alexa Fluor [®] 647 Conjugate)	F	H, M, R, Hm, Mk, Dm, Z, B, (C, X, Dg, Pg)
#5740 Arf6 (D12G6) Rabbit mAb	WB, IP	H, M, R, Mk
#4436 CaMKII (pan) (D11A10) Rabbit mAb	WB	H, M, R
#3362 CaMKII (pan) Antibody	WB	H, M, R, Mk
#12716 Phospho-CaMKII (Thr286) (D21E4) Rabbit mAb	WB	H, M, R

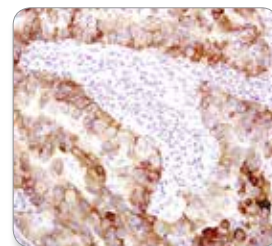
HER2/ErbB2 (29D8) Rabbit mAb #2165: IHC analysis of paraffin-embedded human breast carcinoma, using #2165.



mTOR (7C10) Rabbit mAb #2983: Confocal IF analysis of mouse embryonic fibroblast (MEF) cells using #2983 (green). Actin filaments were labeled with DyLight[™] 554 phalloidin #13054 (red). Blue pseudocolor = DRAQ5[®] #4084 (fluorescent DNA dye).



EGF Receptor (D38B1) XP[®] Rabbit mAb #4267: IHC analysis of paraffin-embedded human lung carcinoma using #4267.



ANTIBODIES

APPLICATIONS REACTIVITY

#3267 Caveolin-1 (D46G3) XP [®] Rabbit mAb	WB, IP, IHC-P, IF-IC, F	H, M, R, Hm, Mk, B, Dg
#3251 Phospho-Caveolin-1 (Tyr14) Antibody	WB	H, M, R, Mk, (Dg)
#8522 Caveolin-2 (D4A6) XP [®] Rabbit mAb	WB, IP, IF-IC	H, Mk
#60769 Importin β1 (E1F1G) Rabbit mAb	WB, IP	H, M, R
#9258 JNK2 (56G8) Rabbit mAb	WB	H, M, R, Hm, Mk, Mi
#8975 LAMTOR1/C11orf59 (D11H6) XP [®] Rabbit mAb	WB, IP, IHC-P, IF-IC	H, M, R, Mk
#2983 mTOR (7C10) Rabbit mAb	WB, IHC-P, IF-IC, F	H, M, R, Mk, (Hr)
#4517 mTOR (L27D4) Mouse mAb	WB	H, M, R, Mk
#5536 Phospho-mTOR (Ser2448) (D9C2) XP [®] Rabbit mAb	WB, IP, IF-IC	H, M, Mk, (R, C, Pg, Hr)
#2974 Phospho-mTOR (Ser2481) Antibody	WB	H, M, R, Mk
#13846 p130 Cas (E1L9H) Rabbit mAb	WB, IP, IHC-P, IF-IC, F	H, M, R, Mk
#4015 Phospho-p130 Cas (Tyr165) Antibody	WB	H, M, R
#4011 Phospho-p130 Cas (Tyr410) Antibody	WB, IP	H, M, R
#4695 p44/42 MAPK (Erk1/2) (137F5) Rabbit mAb	WB, IP, IHC-P, IF-IC, F	H, M, R, Hm, Mk, Mi, Dm, Z, B, Dg, Pg, Ce, (C)
#4370 Phospho-p44/42 MAPK (Erk1/2) (Thr202/Tyr204) (D13.14.4E) XP [®] Rabbit mAb	WB, IP, IHC-P, IF-IC, F	H, M, R, Hm, Mk, Mi, Dm, Z, B, Dg, Pg, Sc, (C, Ce)
#4377 Phospho-p44/42 MAPK (Erk1/2) (Thr202/Tyr204) (197G2) Rabbit mAb	WB, IF-IC, F	H, M, R, Mk, Mi, Dm, Z, Pg
#13148 Phospho-p44/42 MAPK (Erk1/2) (Thr202/Tyr204) (197G2) Rabbit mAb (Alexa Fluor [®] 647 Conjugate)	F	H, M, R, Mk, Mi, Dm, Z, Pg
#4376 Phospho-p44/42 MAPK (Erk1/2) (Thr202/Tyr204) (20G11) Rabbit mAb	WB, IP, IHC-P	H, M, R, Hm, Mk, Mi, Dm, Z, Pg, Sc
#2708 p70 S6 Kinase (49D7) Rabbit mAb	WB, IHC-P	H, M, R, Mk
#9234 Phospho-p70 S6 Kinase (Thr389) (108D2) Rabbit mAb	WB	H, M, R, Mk, (C)
#9209 Phospho-Drosophila p70 S6 Kinase (Thr398) Antibody	WB	H, Dm
#4668 Phospho-SAPK/JNK (Thr183/Tyr185) (81E11) Rabbit mAb	WB, IP, IHC-P	H, M, R, Dm, Sc
#9255 Phospho-SAPK/JNK (Thr183/Tyr185) (G9) Mouse mAb	WB, IP, IF-IC, F	H, M, R, Hm, Sc
#6978 TACE (D22H4) Rabbit mAb	WB	H

RELATED KITS AND REAGENTS

- #7240 PathScan[®] Phospho-EGF Receptor (Tyr1068) Sandwich ELISA Kit
- #7250 PathScan[®] Total EGF Receptor Sandwich ELISA Kit

APPLICATIONS & REACTIVITY KEY: **WB** Western Blotting / **IP** Immunoprecipitation / **IHC** Immunohistochemistry / **IF** Immunofluorescence / **F** Flow Cytometry / **ChIP** Chromatin Immunoprecipitation / **-IC** Immunocytochemistry / **-P** Paraffin / **-F** Frozen / **E-P** Peptide ELISA / **H** human / **M** mouse / **R** rat / **Hm** hamster / **Mk** monkey / **C** chicken / **Mi** mink / **Dm** D. melanogaster / **X** Xenopus / **Z** zebra fish / **B** bovine / **Dg** dog / **Pg** pig / **Sc** S. cerevisiae / **All** all species expected / () 100% sequence homology

© 2016 Cell Signaling Technology, Inc. Cell Signaling Technology, CST, D4D6, D5F3, PathScan, and XP are all trademarks of Cell Signaling Technology, Inc. U.S. Patent No. 5,675,063. All other trademarks are the property of their respective owners.

For Research Use Only. Not For Use In Diagnostic Procedures.

www.cellsignal.com/rtk

 Cell Signaling
TECHNOLOGY[®]