

ANTIBODIES, KITS, AND REAGENTS FOR THE STUDY OF
CANCER IMMUNOLOGY



Cell Signaling
TECHNOLOGY®

Research Tools for the Study of Cancer Immunology

CST has antibodies, kits, and reagents

for each stage of the experimental process.



Primary Antibodies

Over 1000 unconjugated and directly conjugated primary antibodies directed against more than 250 targets relevant to immunology and cancer immunology. The collection is continually expanding, so please check our website frequently for a complete, up-to-date list.

www.cellsignal.com/immuno_newproducts

Kits

Antibody Sampler Kits and Antibody Array Kits: provide a cost-effective way for analyzing multiple nodes in a pathway of interest or modification sites within a protein of interest.

Immunohistochemistry Kits: include IHC validated antibodies and signal enhancing companion products to bolster sensitivity of target detection.

ELISA Kits: allow for specific analyte detection that enables simple high-throughput analysis.

Chromatin IP Kits and Reagents: include SimpleChIP® and SimpleChIP® Plus kits, ChIP validated antibodies, control PCR primers, and companion products needed to perform successful ChIP assays.

PTMScan® Kits and Services: utilize motif antibodies and LC-MS/MS technology to generate quantitative profiles of hundreds to thousands of proteins containing a particular type of post-translational modification.

Experimental Controls

Isotype controls: control antibodies that are used to estimate non-specific binding of test primary antibodies due to Fc receptor binding and other protein-protein interactions.

SignalSlide® IHC controls: slides with formalin fixed paraffin embedded cell pellets that are verified to either express (positive control) or lack (negative control) the target of interest.

SignalSilence® siRNA: rigorously validated siRNAs that can be used to selectively reduce the expression of a target of interest.

Blocking Peptides: synthetic peptides that specifically bind the antibody against which they were designed and block further antibody binding, confirming antibody specificity and eliminating concerns about non-specific binding.

Companion Products

Secondary antibodies (conjugated to Alexa Fluor®, DyLight™ series, PE, Pacific Blue™, HRP and others), loading controls, buffers, dyes, detection reagents, protease and phosphatase inhibitors, and peptide substrates are available to support your workflow.

Chemical Modulators

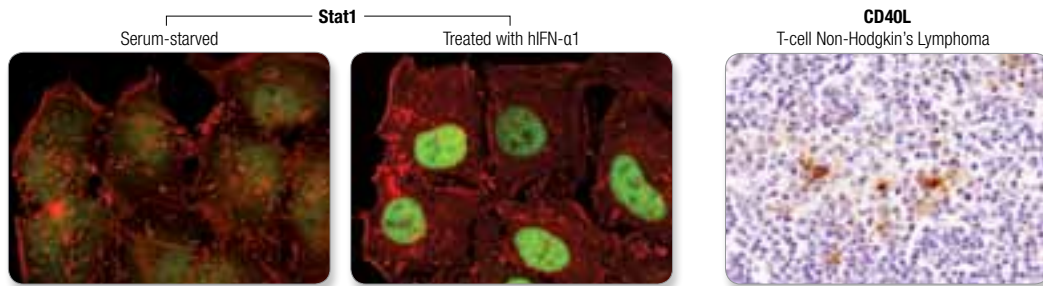
Growth factors and cytokines can be used for treatment of cells in order to stimulate or inhibit activation, phosphorylation, proliferation, and differentiation events.

Custom Products

Our custom department will work with you if you require a product in a specific size, conjugation format, or formulation for your particular assay platform, or if you need a product validated for a specific measure or assay.

Workflow Solutions to Advance your Research

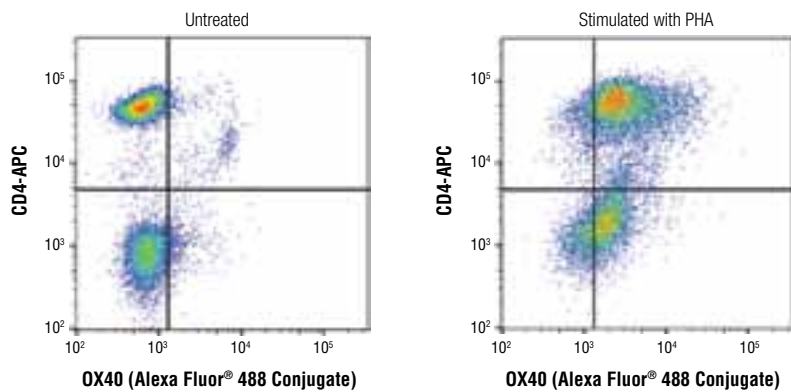
IF and IHC validated antibodies to assess the subcellular localization and spatial context of key immune cell targets



Stat1 (D1K9Y) Rabbit mAb #14994: Confocal IF analysis of HeLa cells serum-starved overnight (left) or treated with Human Interferon- α 1 (hIFN- α 1) #8927 (1,000 units/ml, 30 min; right), using #14994 (green) and β -Actin (8H10D10) Mouse mAb #3700 (red).

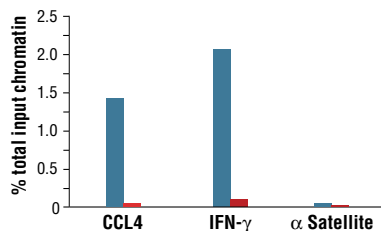
CD40 Ligand (D5J9Y) Rabbit mAb #15094: IHC analysis of paraffin-embedded human T-cell non-Hodgkin's lymphoma using #15094.

Flow Cytometry validated antibodies to allow for simultaneous detection of surface and intracellular targets



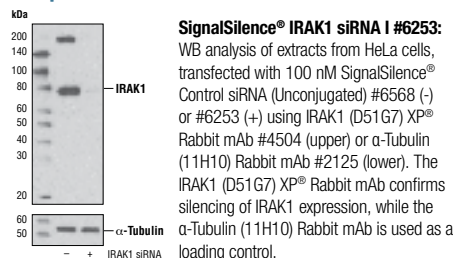
OX40 (D1S6L) Rabbit mAb (Alexa Fluor[®] 488 Conjugate) #15135: Flow cytometric analysis of human PBMCs, untreated (left) or PHA-treated (1 μ g/ml, 48 hr, 37°C; right), using #15135, which recognizes the intracellular domain of human OX40, and co-stained with an anti-human CD4 antibody.

ChIP validated antibodies and kits to examine protein-DNA interactions

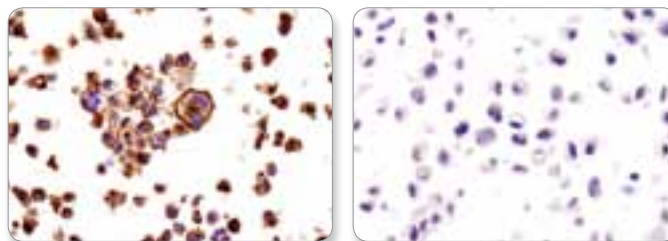


T-bet/TBX21 (D6N8B) XP[®] Rabbit mAb #13232: Chromatin IP was performed with cross-linked chromatin from 4 x 10⁶ NK-92 cells and either 10 μ l of #13232 or 2 μ l of Normal Rabbit IgG #2729 using SimpleChIP[®] Plus Enzymatic Chromatin IP Kit (Magnetic Beads) #9005. The enriched DNA was quantified by real-time PCR using human CCL4 promoter primers, SimpleChIP[®] Human IFN- γ Promoter Primers #13051, and SimpleChIP[®] Human α Satellite Repeat Primers #4486. The amount of immunoprecipitated DNA is represented as a percentage of total input chromatin.

Experimental controls to help assess assay performance



SignalSilence[®] IRAK1 siRNA I #6253: WB analysis of extracts from HeLa cells, transfected with 100 nM SignalSilence[®] Control siRNA (Unconjugated) #6568 (-) or #6253 (+) using IRAK1 (D51G7) XP[®] Rabbit mAb #4504 (upper) or α -Tubulin (11H10) Rabbit mAb #2125 (lower). The IRAK1 (D51G7) XP[®] Rabbit mAb confirms silencing of IRAK1 expression, while the α -Tubulin (11H10) Rabbit mAb is used as a loading control.



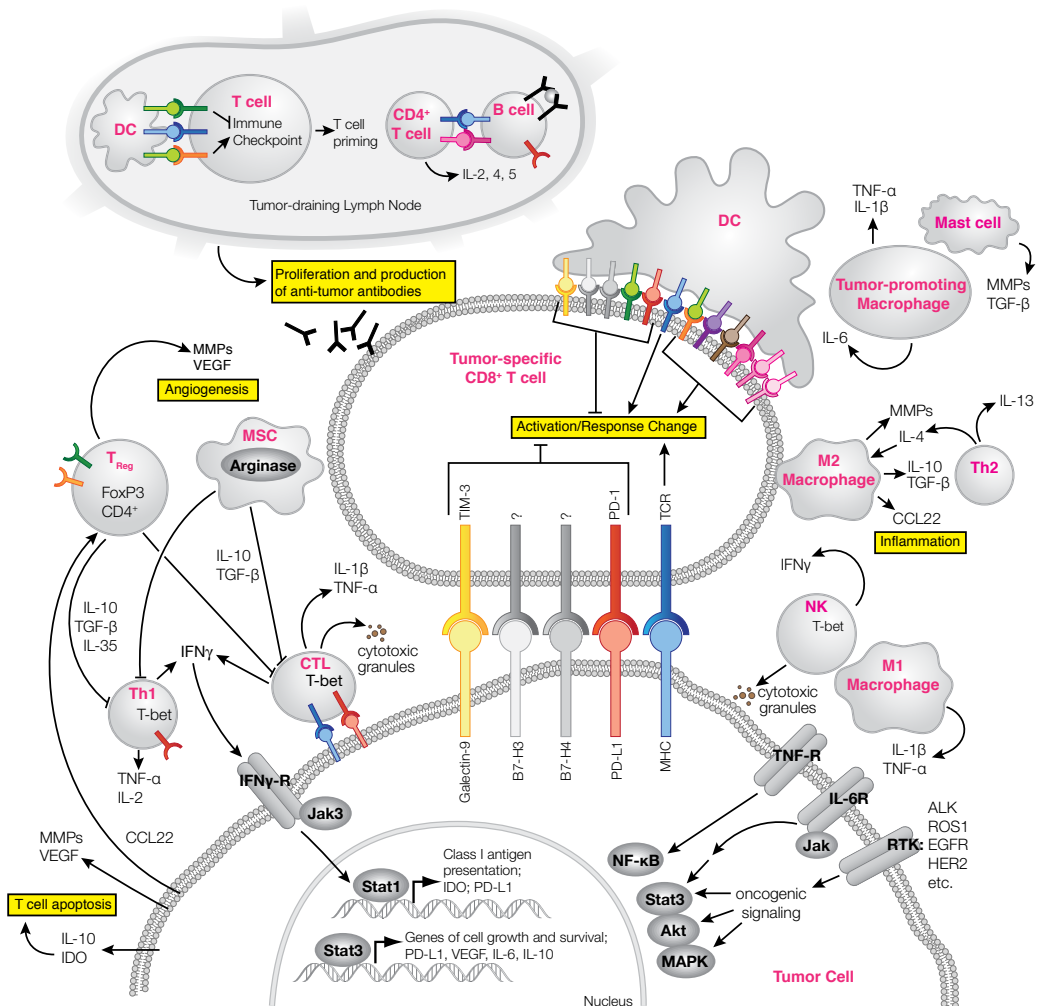
SignalSlide[®] PD-L1 IHC Controls #13747: IHC analysis of paraffin-embedded HDLM-2 (PD-L1 positive, left) and PC3 (PD-L1 negative, right) cell pellets using PD-L1 (E1L3N[®]) XP[®] Rabbit mAb #13684.

Immune Checkpoints and Cancer

	T-cell	APC
Co-stimulatory	CD28	B7-1 (CD80) or B7-2 (CD86)
	CD40L	CD40
	TIT-2?	B7-H3
	OX40 (CD134)	OX40L
	4-1BB (CD137)	4-1BBL
	ICOS	ICOSL
Co-inhibitory	CTLA-4	B7-1 (CD80) or B7-2 (CD86)
	PD-1	B7-H1 (PD-L1) or B7-DC (PD-L2)
	Unknown	B7-H3
	Unknown	B7-H4
	Unknown	VISTA
	VISTA	Unknown
	LAG-3	MHC-Class II
	TIM-3	Galectin-9

Table of stimulatory and inhibitory receptor-ligand complexes, which mediate activation or dampening of the T-cell response, respectively.

	TIM-3		OX40
	Galectin-9		OX40L
	B7-H3		CD40
	B7-H4		CD40L
	CTLA-4		CD27
	CD80, 86		CD70
	PD-1		CD137
	PD-L1, PD-L2		CD137L
	TCR		CD28
	MHC		?
	ICOS		
	ICOSL		



A successful immune response requires a refined balance of co-stimulatory and co-inhibitory inputs (see table, top left), which ensure detection and clearance of foreign material while staving off self-recognition. Fine-tuning this response, at least in part, involves regulation of T-cell function, which is governed by the activation of the T-cell receptor (TCR).

Immune checkpoint proteins belonging to the B7 family (B7-1, B7-2, B7-H1, B7-DC, B7-H3, B7-H4, HHLA, and others) are largely responsible for imposing negative inputs, which mitigate T-cell function post TCR activation. Tumor cells often evade immune detection by co-opting the inhibitory signaling axes, which normally hinder TCR activation. This is manifested as the upregulated expression of immune checkpoint ligands, such as PD-L1, PD-L2, and others, on the tumor cell surface. The binding of these ligands to corresponding receptors on T-cells acutely attenuates T-cell activation or response.

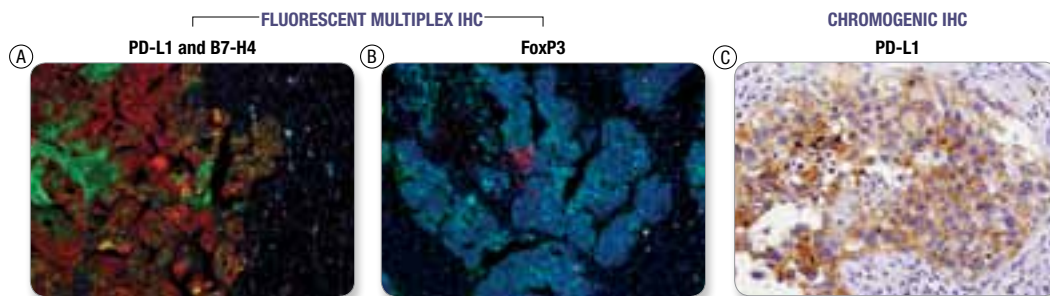
Select Reviews: Ceeraz, S. et al. (2013) *Trends Immunol.* 34, 556–563. Leung, J. and Suh, W.K. (2014) *Immune Network* 14, 265–276. Pardoll, D.M. (2012) *Nat. Rev. Cancer* 12, 252–264. Rozali, E.N. et al. (2012) *Clin. Dev. Immunol.* 2012, Article ID 656340.

Cancer Immunology Target List

For a complete product listing, including our expansive portfolio of modification-specific antibodies please visit our website. The targets in **bold** text are featured in this brochure.

Aiolos	CCL5	Fas	Granzyme A	Ikaros	OX40	SHPS1	Stat5	TNF-R1
B7-H3	CD40 Ligand	FoxP3	Granzyme B	IL-10	PD-1	SLP-76	Syndecan 1	TNF-R2
B7-H4	CIITA	Galectin-1	IDO	Lck	PD-L1	Stat1	T-bet	VISTA
Bcr	CTLA-4	Galectin-3	IFN- γ	NT5E/CD73	RANTES	Stat3	TNF- α	Zap-70

IHC validated antibodies to enable detection of immune checkpoint proteins in the context of three-dimensional tissue architecture



PD-L1 (E1L3N[®]) XP[®] Rabbit mAb #13684
B7-H4 (D1M8I) XP[®] Rabbit mAb #14572
FoxP3 (D2W8E) Rabbit mAb (IHC Specific) #98377

Pan-Keratin (C11) Mouse mAb #4545

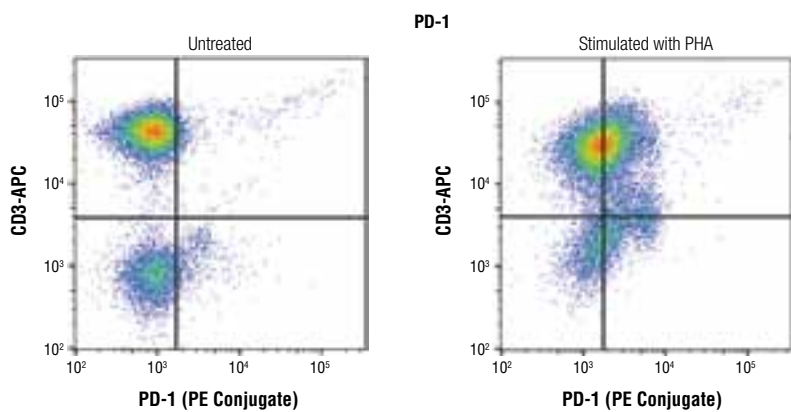
Fluorescent multiplex IHC analysis (A, B) of paraffin-embedded human ovarian tumor tissue. Figure (A) features #13684 (green), #14572 (red), #4545 (yellow), CD3 mAb (magenta), CD8 mAb (cyan). Figure (B) features #13684 (red), #14572 (green), #4545 (cyan), #98377 mAb (yellow), CD8 mAb (magenta). Blue pseudocolor = DAPI #4083 (fluorescent DNA dye). Detection of primary antibodies was achieved using a tyramide-based amplification approach. Chromogenic IHC analysis (C) of paraffin-embedded human lung carcinoma using #13684.

Fluorescent multiplex immunohistochemistry facilitates detection of the interface of tumor infiltrating lymphocytes (TILs) with cells of the tumor and its surrounding tissues aberrantly expressing immune checkpoint ligands such as B7-H4 and PD-L1.

TILs have been observed in the context of several types of cancer and are often used as a correlative readout for clinical outcome (1,2). There is also evidence that PD-L1 expression within the tumor microenvironment is associated with increased clinical benefit (3).

1. Gooden, M.J. et al. (2011) *Br. J. Cancer* 105, 93–103.
2. Fridman, W.H. et al. (2012) *Nat. Rev. Cancer* 12, 298–306.
3. Mahoney, K.M. and Atkins, M.B. (2014) *Oncology* 28, 39–48.

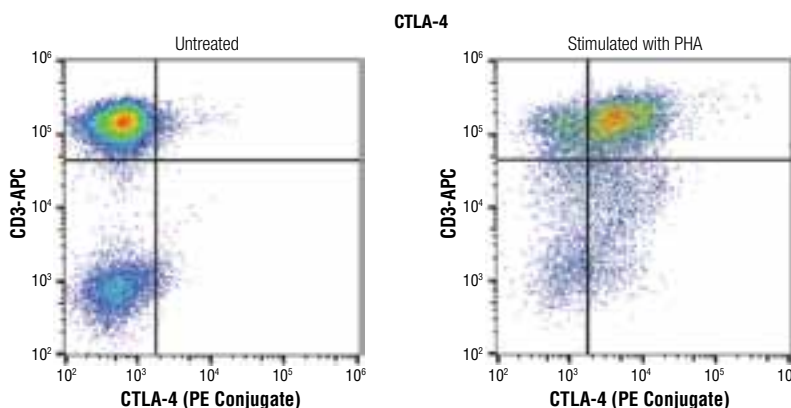
Flow Cytometry validated antibodies to detect co-expression of surface and intracellular targets and allow for phenotypic characterization



PD-1 (D3W4U) Rabbit mAb (PE Conjugate) #15151: Flow cytometric analysis of fixed and permeabilized human PBMCs using #15151, which recognizes the intracellular domain of PD-1, co-stained with CD3 APC. The cells were either untreated (left) or stimulated with PHA (1 µg/ml, 48 hr, 37°C; right).

Recent findings suggest that PD-1 expression levels within intratumoral T-cells, as measured by flow cytometry, can be correlated with prognostic outcome.

Yang, Z.Z et al. (2015) *Blood Cancer J.* 5, e281.



CTLA-4 (D4E9I) Rabbit mAb (PE Conjugate) #15132: Flow cytometric analysis of human PBMCs, untreated (left) or PHA-treated (1 µg/ml, 72 hr; right), using #15132 and co-stained with an anti-human CD3 antibody. Analysis was performed on cells in the lymphocyte gate.

Cytotoxic T-lymphocyte Antigen-4 (CTLA-4) was one of the first and most prominent immune checkpoint receptors to be targeted for immunotherapy.

The blockade of CTLA-4 with a neutralizing antibody (Ipilimumab) has shown immense promise as an anti-neoplastic strategy for melanoma and other cancers.

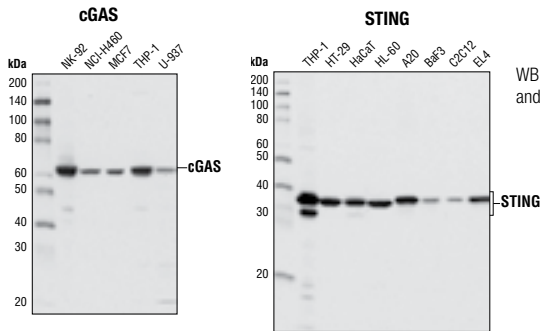
Buchbinder, E.I. and McDermott D.F. (2015) *Clin. Ther.* 37, 755–763.

Innate Immunity and Cancer

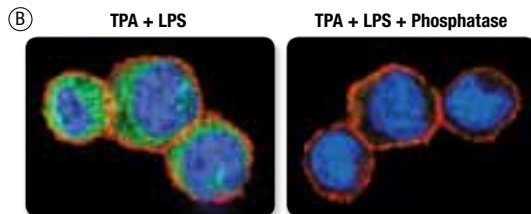
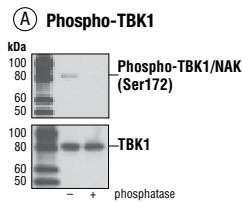
STING

Stimulator of interferon genes (STING) is a key signaling molecule within the innate arm of the immune response, which enables detection of microbial as well as tumor-derived nucleic acids in the cytosol. Disruption of immune checkpoint pathways involving CTLA-4 and PD-1 is found to be therapeutically ineffective in mouse models lacking STING, indicating that activation of the STING pathway may be important for anti-neoplastic therapies involving checkpoint blockade.

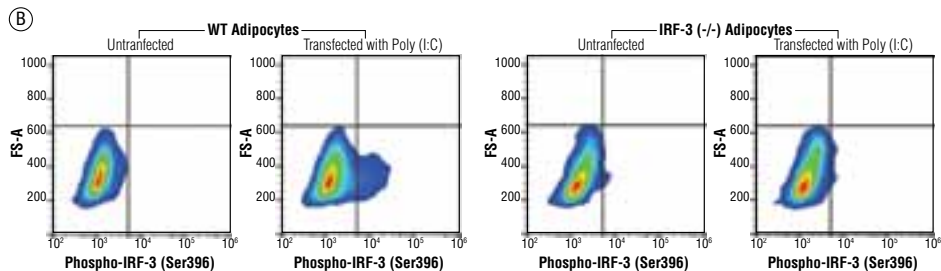
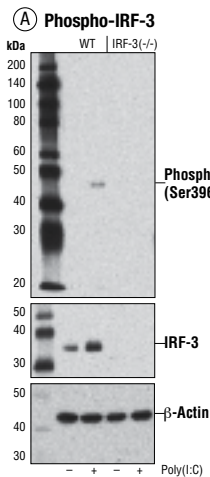
References: Bronte, V. (2014) *Immunity* 51, 679–68. Burdette, D.L. and Vance, R.E. (2013). *Nat. Immunol.* 14, 19–26.



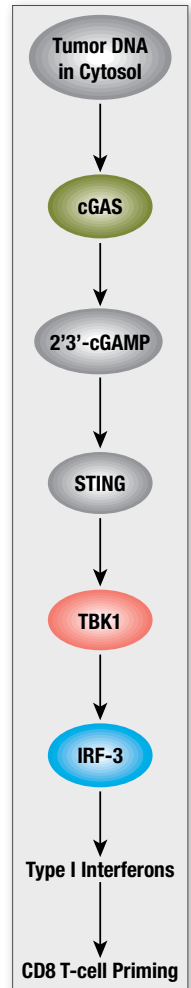
WB analysis of extracts from various cell lines using **cGAS (D1D3G) Rabbit mAb #15102** (left) and **STING (D2P2F) Rabbit mAb #13647** (right).



Phospho-TBK1/NAK (Ser172) (D52C2) XP® Rabbit mAb #5483: WB analysis (A) of extracts from THP-1 cells differentiated with TPA #4174 (80 nM, overnight) followed by treatment with LPS (1 µg/ml, 1 hr), with or without phosphatase treatment using #5483 (upper), or total **TBK1/NAK (D1B4) Rabbit mAb #3504** (lower). Confocal IF analysis (B) of THP-1 cells treated as described for figure A using #5483 (green). Actin filaments were labeled with DyLight™ 554 Phalloidin #13054 (red). Blue pseudocolor = DRAQ5® #4084 (fluorescent DNA dye).



Phospho-IRF-3 (Ser396) (D601M) Rabbit mAb #29047: WB (A) and Flow cytometric (B) analyses of adipocytes from wild type (WT) and IRF-3 (-/-) mice, untransfected (-) or transfected with Poly (I:C) (2.5 µg/ml, 6 hr; +), using #29047. For WB analysis **IRF-3 (D83B9) Rabbit mAb #4302** (middle) and β -Actin (D6A8) Rabbit mAb #8457 (lower) were also used. For Flow cytometric analysis Anti-rabbit IgG (H+L), F(ab')₂ fragment (Alexa Fluor® 488 Conjugate) #4412 was used as a secondary antibody.

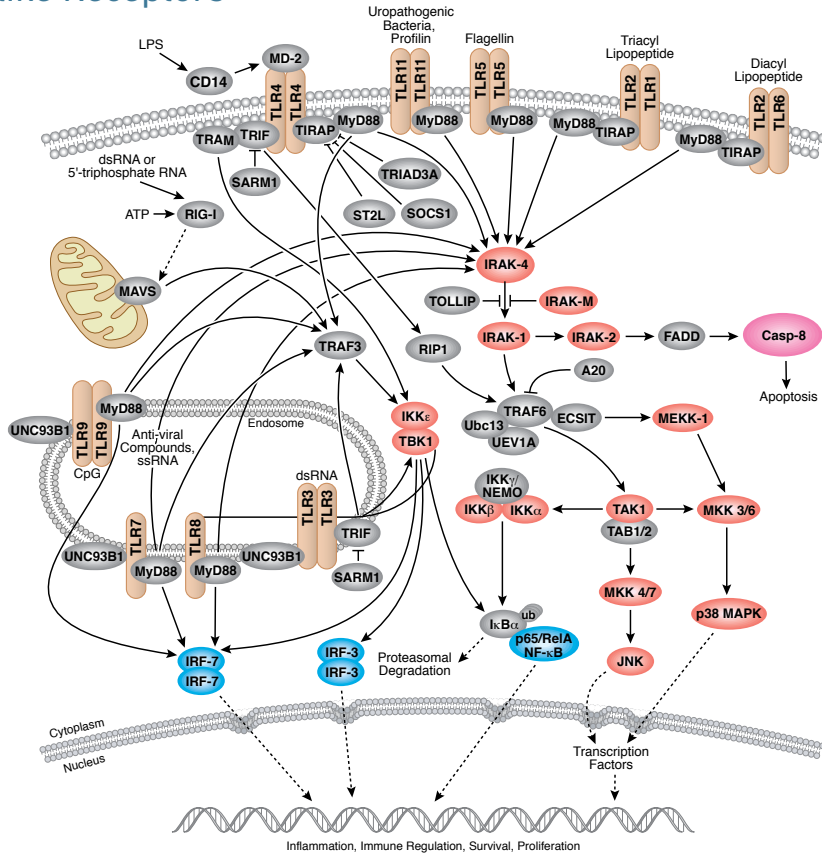


Innate Immunity Target List

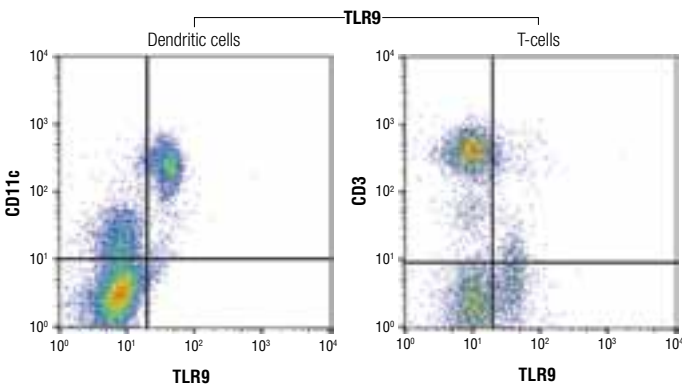
For a complete product listing, including our expansive portfolio of modification-specific antibodies please visit our website. The targets in **bold text** are featured in this brochure.

ADAR1	IFIT1	IRAK3	IRF-3	IRF-8	MAVS	NLRX1	Rig-I	Tollip	USP18	TLR2	TLR7
DC-SIGN	IRAK-M	IRAK4	IRF-4	IRF-9	MDA-5	Nod1	SAMHD1	TREX1	TBK1	TLR3	TLR8
Dectin-1	IRAK1	IRF-1	IRF-5	ISG15	MyD88	PACT	SINTBAD	TRIF	TIRAP	TLR4	TLR9
cGas	IRAK2	IRF-2	IRF-7	ITCH	NDP52	PKR	STING	TRIM25	TLR1	TLR6	

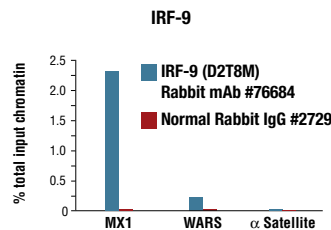
Toll-like Receptors



Toll-like receptors (TLRs) recognize distinct pathogen-associated molecular patterns (PAMPs) and play an integral role in the innate immune response. They participate in the first line of defense against invading pathogens and play a significant role in inflammation, immune cell regulation, survival, and proliferation. Recent studies indicate that TLR expression is not restricted to cells of immune origin and that tumor cells can also bear functional TLRs suggesting they play a role in tumor immunogenicity. The modulation of the inflammatory response by TLRs is a key factor in, tumor development and progression, triggering both tumor-promoting and anti-tumor responses.



Toll-like Receptor 9 (D9M9H) XP® Rabbit mAb #13674: Flow cytometric analysis of human PBMCs using #13674 co-stained with either CD11c (left) or CD3 (right).



IRF-9/ISGF3γ (D2T8M) Rabbit mAb #76684: Chromatin IP was performed with cross-linked chromatin from 4×10^6 U266 cells treated with Human Interferon- α 1 (hIFN- α 1) #8927 (10 nM, 30 min) and either 10 μ l of #76684 or 2 μ l of Normal Rabbit IgG #2729 using SimpleChIP® Plus Enzymatic Chromatin IP Kit (Magnetic Beads) #9005. The enriched DNA was quantified by real-time PCR using SimpleChIP® Human MX1 Promoter Primers #57949, human WARS intron 1 primers, and SimpleChIP® Human α Satellite Repeat Primers #4486. The amount of immunoprecipitated DNA is represented as a percentage of total input chromatin.



Troy, Product Scientist, has been with CST since 2010.

Technical Support

At CST, providing exceptional customer service and technical support are top priorities. Our scientists work at the bench daily to produce and validate our antibodies, so they have hands-on experience and in-depth knowledge of each antibody's performance. In the process, these same scientists generate valuable reference information that they use to answer your questions and help troubleshoot your experiment by phone or email.

- USA & Europe:** www.cellsignal.com/support
- China:** www.cst-c.com.cn/support
- Japan:** www.cstj.co.jp/support

© 2015 Cell Signaling Technology, Inc.
 Cell Signaling Technology, PathScan, PTMScan, SignalSilence, SignalSlide, XP, E1L3N, SimpleChIP, CST are trademarks of Cell Signaling Technology, Inc.
 Pacific Blue is a trademark of Molecular Probes, Inc.
 Dylight is a trademark of Thermo Fisher Scientific, Inc. and its subsidiaries.
 TSA plus is a registered trademark of PerkinElmer.
 DRAQ5 is a registered trademark of Biosstatus Limited.
 Alexa Fluor is a registered trademark of Life Technologies Corporation.
 Alexa Fluor License for secondary antibodies:
 The transfer of this product is contingent on the buyer using the purchased product solely in research conducted by the buyer (whether the buyer is an academic or for-profit entity), for immunocytochemistry, high content screening (HCS) analysis, or flow cytometry applications. The sale of this product is expressly conditioned on the buyer not using the product or its components (1) in manufacturing, (2) to provide a service, information, or data to an unaffiliated third party for payment; (3) for therapeutic, diagnostic or prophylactic purposes; (4) resale, whether or not such product or its components are resold for use in research; or for any other commercial purpose. For information on purchasing a license to this product for purposes other than research, contact Life Technologies Corporation, 5791 Van Allen Way, Carlsbad, CA 92008 USA or outlicensing@lifetech.com
 Alexa Fluor License for direct conjugates:
 This product is provided under an intellectual property license from Life Technologies Corporation. The transfer of this product is contingent on the buyer using the purchased product solely in research, including use with HCS or other automated imaging applications but excluding use in combination with DNA microarrays. The buyer must not sell or otherwise transfer this product or its components for (a) diagnostic, therapeutic or prophylactic purposes; (b) testing, analysis or screening services; or information in return for compensation on a per-test basis; (c) manufacturing or quality assurance or quality control; or (d) resale, whether or not resold for use in research. For information on purchasing a license to this product for purposes other than as described above, contact Life Technologies Corporation, 5791 Van Allen Way, Carlsbad, CA 92008 USA or outlicensing@lifetech.com

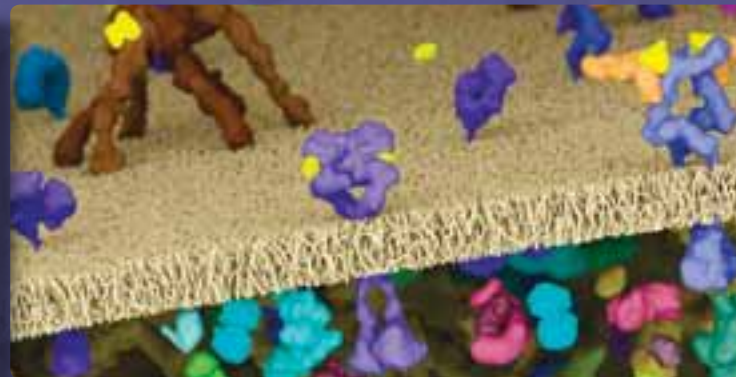
Printed on recycled paper (25% post-consumer waste fiber) using vegetable inks and processed chlorine free.





Cell Signaling
TECHNOLOGY®

Cell Signaling Technology (CST) is a private, family-owned company, founded by scientists and dedicated to providing high quality research tools to the biomedical research community. Our employees operate worldwide from our U.S. headquarters in Massachusetts, and our offices in the Netherlands, China, and Japan.



UNITED STATES

Orders: 877-616-2355 | orders@cellsignal.com
Support: 877-678-8324 | support@cellsignal.com
www.cellsignal.com

CHINA

Tel: +86-21-58356288
Support (China): 4006-473287/GreatQ | tech@cst-c.com.cn
Support (Asia Pacific): csttechasia@cst-c.com.cn
www.cst-c.com.cn

EUROPE, MIDDLE EAST & AFRICA

Tel: +31 (0)71 720 0200
Support: eusupport@cellsignal.eu
www.cellsignal.com

JAPAN

Tel: 03-3295-1630 | Support: info@cstj.co.jp
www.cstj.co.jp

ORDER INFORMATION

Find order information online at
www.cellsignal.com/orderinfo

WWW.CELLSIGNAL.COM

CST Antibody Performance Guarantee: To learn more, please visit: www.cellsignal.com/abguarantee.

COVER IMAGE: Molecular landscape depicting key receptor tyrosine kinase (RTK) signaling pathways. Structural data derived from the PDB and/or EMDB and modeled with Molecular Maya (mMaya).

15BROIMMUCANR0067ENG_00 For Research Use Only. Not For Use in Diagnostic Procedures.