

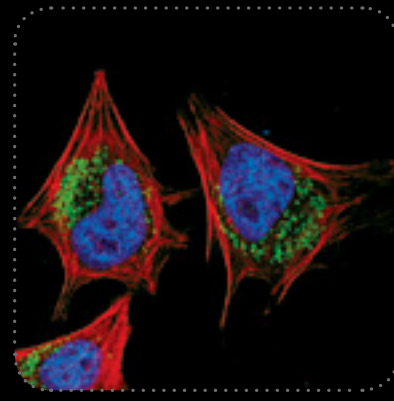
Unparalleled Product Quality, Validation, and Technical Support

Organelle Marker Antibodies

Knowledge of the subcellular location of a protein may reveal the potential role it plays in a variety of cellular processes. Colocalization with one of the organelle-specific antibodies listed below can confirm the subcellular location of a protein of interest. While these organelle marker antibodies serve as powerful tools for immunofluorescence, they may also be used for western blot analysis.

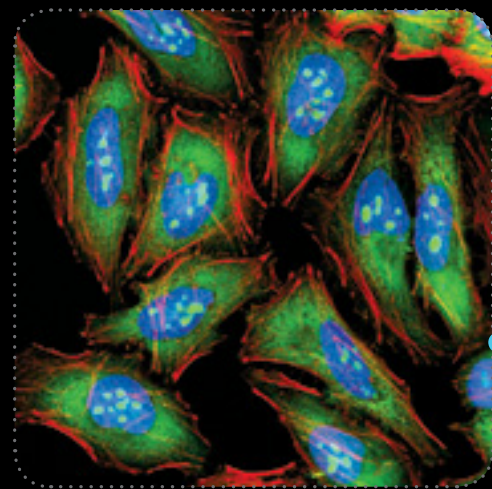
Autophagosomes

LC3B #3868



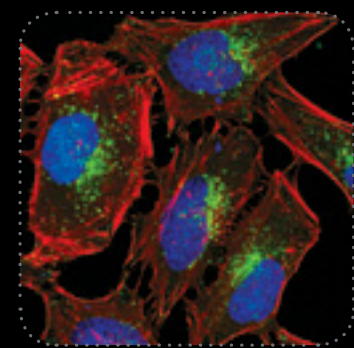
Ribosomes

S6 Ribosomal Protein #5317



Lysosome

LAMP1 #9091



www.cellsignal.com



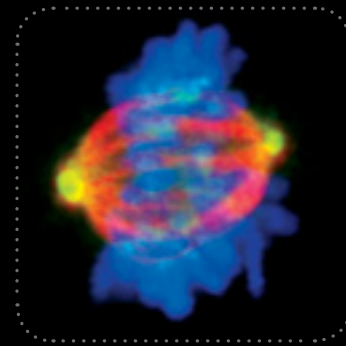
Cell Signaling

TECHNOLOGY®

Intercellular Junctions: E-Cadherin (24E10) Rabbit mAb #3195 | E-Cadherin (24E10) Rabbit mAb (Alexa Fluor® 488 Conjugate) #3199 | E-Cadherin (24E10) Rabbit mAb (Alexa Fluor® 555 Conjugate) #4295 | E-Cadherin (24E10) Rabbit mAb (Alexa Fluor® 594 Conjugate) #7687 | P-Cadherin (C13F9) Rabbit mAb #2189 | P-Cadherin Antibody #2130 | VE-Cadherin (D67F2) XP® Rabbit mAb #2500 | VE-Cadherin Antibody #2158 | Connexin 43 Antibody #3512 | ZO-2 Antibody #2847 | ZO-3 (D57G7) XP® Rabbit mAb #3704 | **Cytoskeleton:** β-Actin (D6A8) Rabbit mAb #8457 | β-Actin (13E5) Rabbit mAb #4970 | β-Actin (13E5) Rabbit mAb (Alexa Fluor® 488 Conjugate) #8844 | β-Actin (13E5) Rabbit mAb (Alexa Fluor® 594 Conjugate) #9470 | β-Actin (13E5) Rabbit mAb (Alexa Fluor® 647 Conjugate) #8584 | β-Actin (8H10D10) Mouse mAb #3700 | Pan-Actin (D18C11) Rabbit mAb #8456 | Desmin (D93F5) XP® Rabbit mAb #5332 | Keratin 7 (R458) Antibody #4898 | Keratin 17 (D73C7) XP® Rabbit mAb #4543 | Pan-Keratin (C11) Mouse mAb #4545 | Pan-Keratin (C11) Mouse mAb (Alexa Fluor® 488 Conjugate) #4523 | Pan-Keratin (C11) Mouse mAb (Alexa Fluor® 647 Conjugate) #4528 | α-Tubulin (11H10) Rabbit mAb #2125 | α-Tubulin Antibody #2144 | α-Tubulin (DM1A) Mouse mAb #3873 | β-Tubulin (9F3) Rabbit mAb #2128 | β-Tubulin (9F3) Rabbit mAb (Alexa Fluor® 488 Conjugate) #3623 | β-Tubulin (9F3) Rabbit mAb (Alexa Fluor® 555 Conjugate) #2116 | β-Tubulin (9F3) Rabbit mAb (Alexa Fluor® 647 Conjugate) #3624 | α-Tubulin Antibody #2146 | Vimentin (D21H3) XP® Rabbit mAb #5741 | **Cytoplasm:** MEK1/2 (D1A5) Rabbit mAb #8727 | MEK1/2 (L38C12) Mouse mAb #4694 | **Ribosomes:** Ribosomal Protein S3 (D50G7) XP® Rabbit mAb #9538 | Ribosomal Protein S3 Antibody #2579 | Ribosomal Protein L7a (E109) Antibody #2415 | S6 Ribosomal Protein (5G10) Rabbit mAb #2217 | S6 Ribosomal Protein (54D2) Mouse mAb #2317 | S6 Ribosomal Protein (54D2) Mouse mAb (Alexa Fluor® 488 Conjugate) #5317 | S6 Ribosomal Protein (54D2) Mouse mAb (Alexa Fluor® 555 Conjugate) #6989 | S6 Ribosomal Protein (54D2) Mouse mAb (Alexa Fluor® 647 Conjugate) #5548 | **Mitochondria:** AIF (D39D2) XP® Rabbit mAb #5318 | COX IV (3E11) Rabbit mAb #4850 | COX IV (3E11) Rabbit mAb (Alexa Fluor® 488 Conjugate) #4853 | COX IV (3E11) Rabbit mAb (Alexa Fluor® 555 Conjugate) #6693 | COX IV (3E11) Rabbit mAb (Alexa Fluor® 594 Conjugate) #6692 | COX IV (3E11) Rabbit mAb (Alexa Fluor® 647 Conjugate) #7561 | COX IV Antibody #4844 | Hexokinase I (C35C4) Rabbit mAb #2024 | Syntaxin 6 (C34B2) Rabbit mAb #2869 | **Golgi:** RCAS1 Antibody #6960 | Syntaxin 6 (C34B2) Rabbit mAb #2869 | **Endosomes:** Caveolin-1 (D46G3) XP® Rabbit mAb #3267 | Caveolin-1 Antibody #3238 | Caveolin-2 (D4A6) XP® Rabbit mAb #8522 | Clathrin Heavy Chain (D3C6) XP® Rabbit mAb #4796 | Clathrin Heavy Chain (P1663) Antibody #2410 | EEA1 (C45B10) Rabbit mAb #3288 | EEA1 Antibody #2411 | Rab5 (C8B1) Rabbit mAb #3547 | Rab5 Antibody #2143 | Rab7 (D95F2) XP® Rabbit mAb #9367 | Rab9 (D52G8) XP® Rabbit mAb #5118 | Rab11 (D4F5) XP® Rabbit mAb #5589 | **Autophagosomes:** Atg12 Antibody (Human Specific) #2010 | Atg12 Antibody (Mouse Specific) #2011 | LC3A (D50G8) XP® Rabbit mAb #4599 | LC3B (D11) XP® Rabbit mAb #3868 | LC3B Antibody #2775 | SQSTM1/p62 (D10E10) Rabbit mAb (IF Preferred) #7695 | **Nucleus:** ASH2L (D93F6) XP® Rabbit mAb #5019 | ESET (C1C12) Rabbit mAb #2196 | Histone H2A.Z Antibody #2718 | LSD1 (C69G12) Rabbit mAb #2184 | LSD1 Antibody #2139 | **Nuclear Envelope:** Lamin A/C (4C11) Mouse mAb #4777 | NUP98 (C39A3) Rabbit mAb #2598 | **Lysosome:** LAMP1 (D2D11) XP® Rabbit mAb #9091 | **Nucleolus:** eIF6 (D16E9) XP® Rabbit mAb #3833 | Fibrillarin (C13C3) Rabbit mAb #2639 | **Centromeres:** CENP-A (C51A7) Rabbit mAb (Mouse Specific; IF Preferred) #2048 | CENP-A Antibody #2186 | **Centrosomes:** PCM-1 (G2000) Antibody #5213 | PCM-1 (O15) Antibody #5259 | **Mitosis:** Phospho-Aurora A (Thr288) (C39D8) Rabbit mAb #3079 | Aurora A/AIK (1G4) Rabbit mAb #4718 | Phospho-Aurora A (Thr288)/Aurora B (Thr232)/Aurora C (Thr198) (D13A11) XP® Rabbit mAb #2914 | Phospho-CENP-A (Ser7) Antibody #2187 | Phospho-Histone H3 (Ser10) (D2C8) XP® Rabbit mAb #3377 | Phospho-Histone H3 (Ser10) (D2C8) XP® Rabbit mAb (Alexa Fluor® 488 Conjugate) #3465 | Phospho-Histone H3 (Ser10) (D2C8) XP® Rabbit mAb (Alexa Fluor® 555 Conjugate) #3475 | Phospho-Histone H3 (Ser10) (D2C8) XP® Rabbit mAb (Alexa Fluor® 594 Conjugate) #8481 | Phospho-Histone H3 (Ser10) (D2C8) XP® Rabbit mAb (Alexa Fluor® 647 Conjugate) #3458 | Phospho-Histone H3 (Ser10) (6G3) Mouse mAb #9706 | Phospho-Histone H3 (Ser10) Antibody #9701 | Phospho-Histone H3 (Ser10) Antibody (Alexa Fluor® 488 Conjugate) #9708 | Phospho-Histone H3 (Ser10) Antibody (Alexa Fluor® 647 Conjugate) #9716 | **Endoplasmic Reticulum:** ERp72 (D70D12) XP® Rabbit mAb #5033 | PDI Antibody #2446 | PDI (C81H6) Rabbit mAb #3501

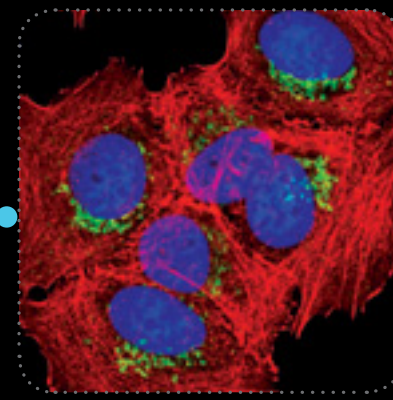
Mitosis

Aurora A #2914



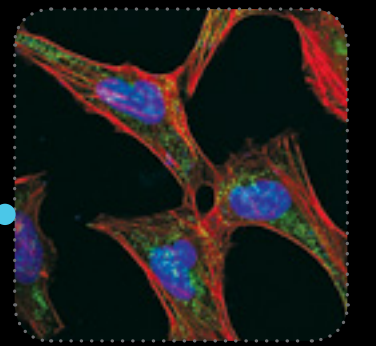
Golgi

Syntaxin 6 #2869



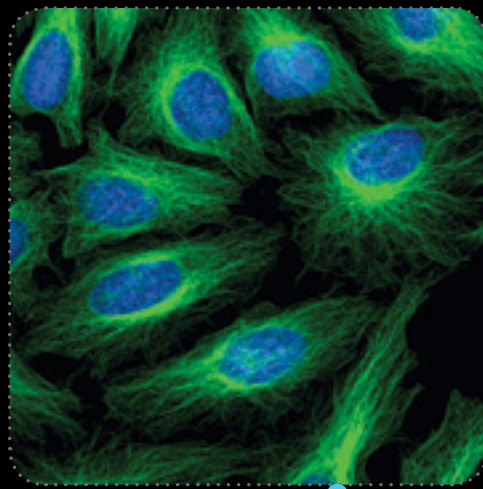
Endosomes

Caveolin-2 #8522



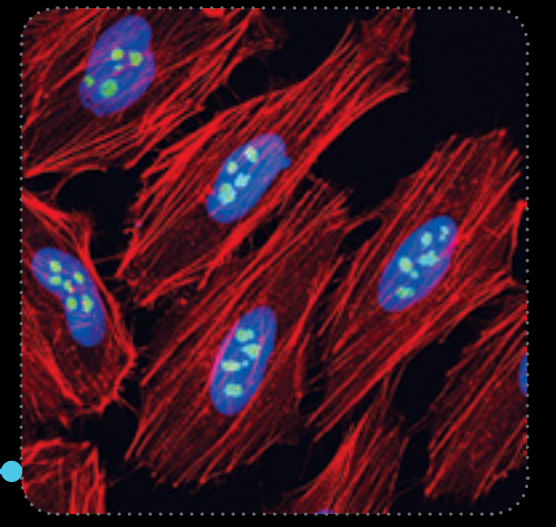
Cytoskeleton

β-Tubulin #2128



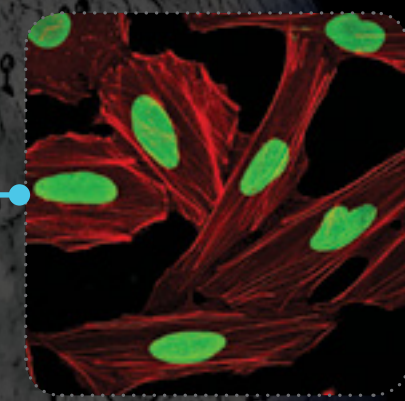
Nucleolus

eIF6 #3833



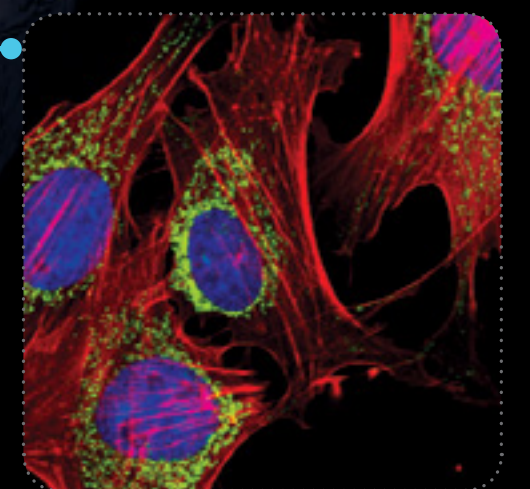
Nuclear Envelope

Lamin #4777



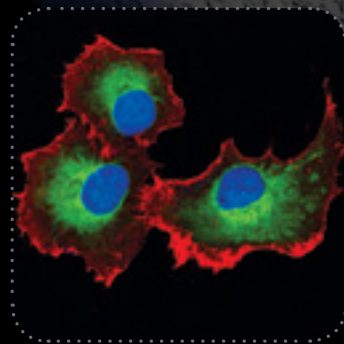
Mitochondria

AIF #5318



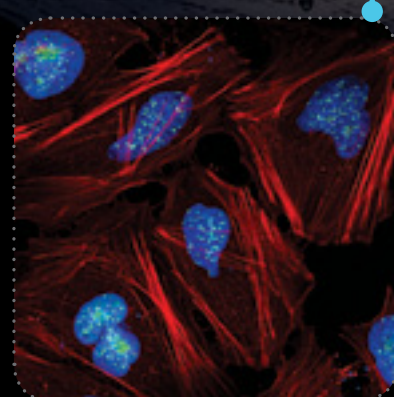
Endoplasmic Reticulum

ERp72 #5033



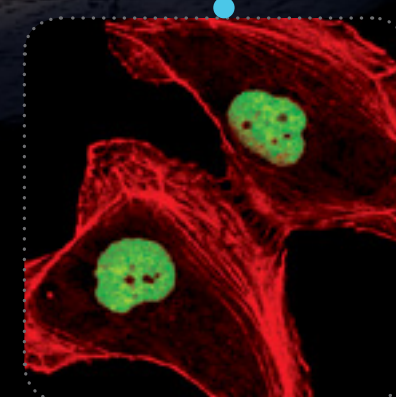
Centromeres

CENP-A #2186



Nucleus

ASH2L #5019



Intercellular Junctions

ZO-3 #3704

