

APPLICATION FOCUS

Antibody Sampler Kits



Cell Signaling

TECHNOLOGY®

New in 2013

KIT INCLUDES:

#12704	Acetyl-CoA Carboxylase 1 and 2 Antibody Sampler Kit	Phospho-Acetyl-CoA Carboxylase (Ser79), Acetyl-CoA Carboxylase, Acetyl-CoA Carboxylase 1, Acetyl-CoA Carboxylase 2	WB	
#12589	Adipogenesis Marker Antibody Sampler Kit	Acetyl-CoA Carboxylase, Adiponectin, C/EBP α , FABP4, Fatty Acid Synthase, Perilipin, PPAR γ	WB	
#12046	Akt Alexa Fluor [®] 488 Conjugated Antibody Sampler Kit	Akt (Thr308), Phospho-Akt (Ser473), Akt		F
#12645	ALK Antibody Sampler Kit	Phospho-ALK (Tyr1078), Phospho-ALK (Tyr1096), Phospho-ALK (Tyr1278), Phospho-ALK (Tyr1278/1282/1283), Phospho-ALK (Tyr1282/1283), Phospho-ALK (Tyr1586), Phospho-ALK (Tyr1604), ALK	WB	
#12592	β -Amyloid Peptides Antibody Sampler Kit	β -Amyloid, β -Amyloid (1-37 Specific), β -Amyloid (1-39 Specific), β -Amyloid (1-40 Specific), β -Amyloid (1-42 Specific)	WB	
#8696	Angiogenesis Antibody Sampler Kit	Phospho-Akt (Ser473), Phospho-FAK (Tyr397), Phospho-p38 MAPK (Thr180/Tyr182), Phospho-p44/42 MAPK (Erk1/2) (Thr202/Tyr204), Phospho-PLC γ 1 (Ser1248), Phospho-Src Family (Tyr416), Phospho-VEGF Receptor 2 (Tyr1175)	WB	
#12145	Apoptosis and Proliferation Alexa Fluor [®] 488 Conjugated Antibody Sampler Kit	Cleaved Caspase-3 (Asp175), Ki-67, Cleaved PARP (Asp214)		IF F
#8360	Apoptotic Release Antibody Sampler Kit	Caspase-3, Cox IV, Cytochrome c, HtrA2/Omi, MEK 1/2, Smac/Diablo	WB	
#12738	Aurora A/B Substrate Antibody Sampler Kit	Phospho-CENP-A (Ser7), Phospho-Histone H3 (Ser10), Phospho-Histone H3 (Ser28), Phospho-p53 (Ser315), Phospho-PLK1 (Thr210), Phospho-TACC3 (Ser558)	WB	
#11843	Cell Fractionation Antibody Sampler Kit	AIF, Histone H3, MEK 1/2, Vimentin	WB	IF
#8663	Cellular Localization Alexa Fluor [®] 647 Conjugated Antibody Sampler Kit	β -Actin, β -Tubulin, COX IV, PDI	WB	
#12775	Chromodomain Helicase DNA-Binding (CHD) Family Antibody Sampler Kit	CHD1, CHD2, CHD3, CHD4, CHD7, CHD8	WB	
#8614	Cytoskeletal Marker Antibody Sampler Kit	β -Actin, β -Tubulin, Desmin, Keratin 17, Pan-Keratin, Vimentin	WB	
#8356	Death Receptor Antibody Sampler Kit	DcR3, DR3, DR5, FADD, Fas, RIP, TNF-R1, TNF-R2, TRADD	WB	
#12690	Effector Caspases and Substrates Antibody Sampler Kit	Caspase-3, Caspase-6, Caspase-7, Lamin A/C, Lamin B1, PARP	WB	
#12666	Endosomal Marker Antibody Sampler Kit	Caveolin-1, Clathrin Heavy Chain, EEA1, Rab5, Rab7, Rab11	WB	IF
#12427	Epitope Tag Alexa Fluor [®] 488 Conjugated Antibody Sampler Kit	DYKDDDDK Tag, GST, HA-Tag, Myc-Tag		F
#12718	ER and Golgi-Associated Marker Proteins Antibody Sampler Kit	Calnexin, Erp72, PDI, RCAS1, Syntaxin 6	WB	IF
#12596	Phospho-FLT3 Antibody Sampler Kit	Phospho-FLT3 (Tyr589/591), Phospho-FLT3 (Tyr591), Phospho-FLT3 (Tyr842), Phospho-FLT3 (Tyr969), FLT3	WB	
#12755	High Mobility Group (HMG) Proteins Antibody Sampler Kit	HMG A1, HMG B1, HMG B2, HMG N1, HMG N2	WB	
#12594	HSP27 Antibody Sampler Kit	Phospho-HSP27 (Ser15), Phospho-HSP27 (Ser78), Phospho-HSP27 (Ser82), HSP27	WB	
#12675	Initiator Caspases Antibody Sampler Kit	Caspase-2, Caspase-3, Caspase-8, Caspase-9, Cleaved Caspase-9 (Asp330)	WB	
#12207	MAPK Family Alexa Fluor [®] 647 Conjugated Antibody Sampler Kit	Phospho-p38 MAPK (Thr180/Tyr182), Phospho-p44/42 MAPK (Erk1/2) (Thr202/Tyr204), p44/42 MAPK (Erk1/2), Phospho-SAPK/JNK (Thr183/Tyr185)		F
#12882	Neuronal Scaffold Proteins Antibody Sampler Kit	Homer1, PSD95, SHANK2, Spinophilin	WB	
#12784	Nucleus and Nuclear Envelope-Associated Marker Proteins Antibody Sampler Kit	ESET, Fibrillarin, Histone H2A.Z, Histone H3, Lamin A/C, LSD1, NUP98	WB	
#12823	Plexin Isoform Antibody Sampler Kit	Plexin A1, Plexin A2, Plexin A3, Plexin A4	WB	IP
#12742	Pro-caspase Antibody Sampler Kit	Caspase-3, Caspase-6, Caspase-7, Caspase-8, Caspase-9, Lamin A/C, PARP	WB	
#12747	Smad2/3 Antibody Sampler Kit	Phospho-Smad2 (Ser465/467), Smad2, Smad2/3, Phospho-Smad3 (Ser423/425), Smad3, Smad4	WB	
#12656	Smad 1/5/8 Antibody Sampler Kit	Phospho-Smad1 (Ser206), Phospho-Smad1 (Ser463/465)/Smad5 (Ser463/465)/ Smad8 (Ser426/428), Phospho-Smad1/5 (Ser463/465), Smad1, Smad4, Smad5	WB	
#12348	Stat Family Alexa Fluor [®] 488 Conjugated Antibody Sampler Kit	Phospho-Stat1 (Tyr701), Phospho-Stat3 (Tyr705), Phospho-Stat5 (Tyr694)	WB	IF
#12854	SWI/SNF Complex Antibody Sampler Kit	ARID1A/BAF250A, BAF155, Brg1 (A52), BRM, SMARCC1/SMARCC2/BAF170, SNF5	WB	
#12599	Phospho-VEGF Receptor 2 Antibody Sampler Kit	Phospho-VEGF Receptor 2 (Tyr951), Phospho-VEGF Receptor 2 (Tyr996), Phospho-VEGF Receptor 2 (Tyr1059), Phospho-VEGF Receptor 2 (Tyr1175), VEGF Receptor 2	WB	
#12814	C/EBP Antibody Sampler Kit	Phospho-C/EBP α (Ser21), Phospho-C/EBP α (Thr222/226), C/EBP α , Phospho-C/EBP β (Thr235), C/EBP β , C/EBP δ , CHOP	WB	
#12651	PDGF Receptor Activation Antibody Sampler Kit	Phospho-Akt (Ser473), Akt (pan), Phospho-PDGF Receptor β (Tyr751), PDGF Receptor β , SHP-2, Phospho-p44/42 MAPK (Erk1/2) (Thr202/Tyr204), p44/42 MAPK (Erk1/2), Phospho-SHP-2 (Tyr542)	WB	

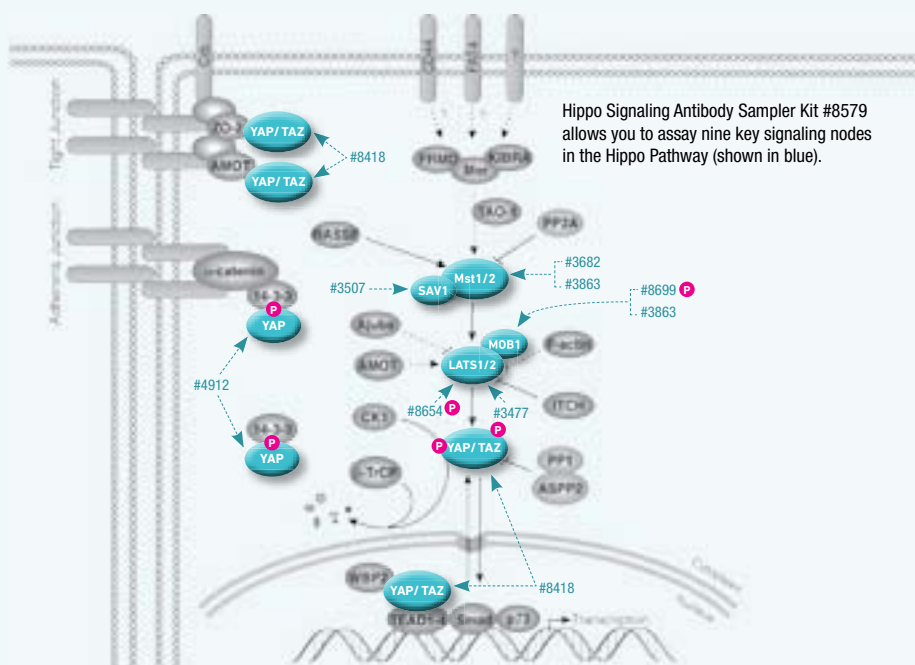
APPLICATION KEY: **WB** Western Blotting **IP** Immunoprecipitation **IHC** Immunohistochemistry **IF** Immunofluorescence **F** Flow Cytometry

Antibody Sampler Kits

from Cell Signaling Technology (CST) provide you with a convenient means to investigate various phosphorylation events on a protein or to assay multiple nodes in specific signaling pathways.

These kits offer comprehensive and logical coverage of cellular events or signaling pathways because targets are thoughtfully selected by CST scientists. We offer over 200 sampler kits, which cover diverse signaling pathways and research areas including DNA damage, cytoskeletal regulation, and cellular metabolism.

- Each Antibody Sampler Kit contains 3–9 carefully selected target-specific antibodies.
- Kits contain pre-packaged petite sizes (40 µl) of each primary antibody (enough to complete 4 western mini-blots per primary antibody) and the relevant HRP- or Alexa Fluor®-conjugated secondary antibodies.
- All antibodies in the kits are available separately in larger sizes to support your ongoing research.



Hippo Signaling Antibody Sampler Kit #8579 allows you to assay nine key signaling nodes in the Hippo Pathway (shown in blue).

Featured Kits

Some of our most popular Antibody Sampler Kits cover nodes in key signaling pathways such as the MAPK, Akt, and NF-κB pathways, as well as important cellular events including apoptosis, autophagy, and epithelial-mesenchymal transition (EMT).

	KIT INCLUDES:	
#9916 Phospho-Akt Pathway Antibody Sampler Kit	Phospho-Akt (Thr308), Phospho-Akt (Ser473), Akt (pan), Phospho-c-Raf (Ser259), Phospho-GSK-3β (Ser9), LY294002, Phospho-PDK1, Phospho-PTEN,	WB
#9957 AMPK and ACC Antibody Sampler Kit	Phospho-Acetyl-CoA Carboxylase (Ser79), Acetyl-CoA Carboxylase, Phospho-AMPKα (Thr172), AMPKα, Phospho-AMPKβ1 (Ser108), AMPKβ1/2	WB
#9915 Apoptosis Antibody Sampler Kit	Caspase-3, Cleaved Caspase-3 (Asp175), Caspase-7, Cleaved Caspase-7 (Asp198), Caspase-9, Cleaved Caspase-9 (Asp330), PARP, Cleaved PARP (Asp214)	WB
#4445 Autophagy Antibody Sampler Kit	Atg3, Atg5, Atg7, Atg12, Beclin-1, LC3A, LC3B	WB
#9782 Epithelial-Mesenchymal Transition (EMT) Antibody Sampler Kit	E-Cadherin, N-Cadherin, β-Catenin, Claudin-1, Slug, Snail, TCF8/ZEB1, Vimentin, ZO-1	WB
#9956 ER Stress Antibody Sampler Kit	BiP, Calnexin, CHOP, Ero1-Lα, IRE1α, PDI, PERK	WB
#9910 Phospho-MAPK Family Antibody Sampler Kit	Phospho-p38 MAPK (Thr180/Tyr182), Phospho-p44/42 MAPK (Erk1/2) (Thr202/Tyr204), Phospho-SAPK/JNK (Thr183/Tyr185), U0126	WB IP IHC
#9926 MAPK Family Antibody Sampler Kit	p38 MAPK, p44/42 MAPK (Erk1/2), SAPK/JNK	WB
#9862 mTOR Substrates Antibody Sampler Kit	Phospho-4E-BP1 (Thr37/46), Phospho-mTOR (Ser2448), mTOR, Phospho-p70 S6 Kinase (Ser371), Phospho-p70 S6 Kinase (Thr389)	WB
#9936 NF-κB Pathway Sampler Kit	Phospho-IκBa (Ser32), IκBa, Phospho-IKKα/β (Ser176/180), IKKα, IKKβ, Phospho-NF-κB p65 (Ser536), NF-κB p65	WB

Antibody Sampler Kits by Pathway

ADHESION AND EXTRACELLULAR MATRIX

#9961	Cadherin-Catenin Antibody Sampler Kit	WB
#4749	Integrin Antibody Sampler Kit	WB
#8683	Tight Junction Antibody Sampler Kit	WB

APOPTOSIS

#9915	Apoptosis Antibody Sampler Kit	WB
#9930	Apoptosis Antibody Sampler Kit (Mouse Preferred)	WB
#9105	Phospho-Bad Antibody Sampler Kit	WB
#9929	Cleaved Caspase Antibody Sampler Kit	WB
#9770	IAP Family Antibody Sampler Kit	WB
#9942	Pro-Apoptosis Bcl-2 Family Antibody Sampler Kit	WB
#9941	Pro-Survival Bcl-2 Family Antibody Sampler Kit	WB
#8357	Stress and Apoptosis Antibody Sampler Kit	WB
#8109	SignalStain® Proliferation/Apoptosis IHC Sampler Kit	IHC
#8347	TRAF Antibody Sampler Kit	WB

AUTOPHAGY

#8666	Autophagosome Marker Antibody Sampler Kit	WB
#4445	Autophagy Antibody Sampler Kit	WB
#8359	ULK1 Antibody Sampler Kit	WB

CALCIUM, cAMP, AND LIPID SIGNALING

#8575	Calcium Ion Regulation Antibody Sampler Kit	WB
#9921	Phospho-PKC Antibody Sampler Kit	WB
#9960	PKC Isoform Antibody Sampler Kit	WB
#3860	PLCγ Antibody Sampler Kit	WB

CELL CYCLE, CHECKPOINT CONTROL, AND DNA DAMAGE

#3875	Aurora Antibody Sampler Kit	WB
#9555	cdc25C Antibody Sampler Kit	WB
#9868	CDK Antibody Sampler Kit	WB
#9917	Cell Cycle/Checkpoint Antibody Sampler Kit	WB IP
#9932	Cell Cycle Regulation Antibody Sampler Kit	WB
#9870	Cell Cycle Regulation Antibody Sampler Kit II	WB
#9931	Phospho-Chk1/2 Antibody Sampler Kit	WB
#9869	Cyclin Antibody Sampler Kit	WB
#9947	DNA Damage Antibody Sampler Kit	WB
#8341	DNA Replication Antibody Sampler Kit	WB
#9653	Double Strand Breaks (DSB) Repair Antibody Sampler Kit	WB
#9786	Mismatch Repair Antibody Sampler Kit	WB IF
#8344	MRN Complex Antibody Sampler Kit	WB
#8678	Oncogene and Tumor Suppressor Antibody Sampler Kit	WB
#9919	Phospho-p53 Antibody Sampler Kit	WB
#9785	Polo-like Kinase Antibody Sampler Kit	WB
#9969	Rb Antibody Sampler Kit	WB IP
#8345	Tumor Suppressor Inactivation Antibody Sampler Kit	WB
#8342	UV Induced DNA Damage Response Antibody Sampler Kit	WB

CELLULAR METABOLISM

#9957	AMPK and ACC Antibody Sampler Kit	WB
#9839	AMPK Subunit Antibody Sampler Kit	WB
#8335	Fatty Acid and Lipid Metabolism Antibody Sampler Kit	WB
#8337	Glycolysis Antibody Sampler Kit	WB
#8338	Phospho-Insulin/IGF Receptor Antibody Sampler Kit	WB
#3015	Insulin Receptor Substrate Antibody Sampler Kit	WB
#12879	IRS-1 Inhibition Antibody Sampler Kit	WB IF
#8334	Lipolysis Activation Antibody Sampler Kit	WB

#8674	Mitochondrial Marker Antibody Sampler Kit	WB
#8679	Pancreatic Marker Antibody Sampler Kit	WB
#8655	Wnt/β-Catenin Activated Targets Antibody Sampler Kit	WB

CHROMATIN/EPIGENETIC REGULATION

#9933	Acetyl-Histone Antibody Sampler Kit	WB
#9927	Acetyl-Histone H3 Antibody Sampler Kit	WB
#8346	Acetyl-Histone H4 Antibody Sampler Kit	WB
#9847	Methyl-Histone H3 Antibody Sampler Kit	WB
#9849	Phospho-Histone H3 (Mitotic Marker) Antibody Sampler Kit	WB
#9928	Histone Deacetylase (HDAC) Antibody Sampler Kit	WB IP
#8340	Jumonji Family Antibody Sampler Kit	WB IP
#8686	Lysine Acetyltransferase Antibody Sampler Kit	WB IP
#8694	Lysine Methyltransferase Antibody Sampler Kit	WB
#8349	NuRD Complex Antibody Sampler Kit	WB
#9788	Polycomb Group Antibody Sampler Kit	WB

COMPANION PRODUCTS

#9962	Epitope Tag Antibody Sampler Kit	WB IP	IF
#5142	Loading Control Antibody Sampler Kit	WB	IF
#4670	Loading Control Antibody Sampler Kit (HRP Conjugate)	WB	
#9774	Loading Control Antibody Sampler Kit (Mouse)	WB	

CYTOSKELETAL REGULATION

#8355	Actin Nucleation Antibody Sampler Kit	WB
#8606	Actin Nucleation and Polymerization Antibody Sampler Kit	WB
#9967	Actin Reorganization Antibody Sampler Kit	WB
#8354	Cofilin Activation Antibody Sampler Kit	WB
#9384	Cytokeratin Antibody Sampler Kit	WB
#9782	Epithelial-Mesenchymal Transition (EMT) Antibody Sampler Kit	WB
#4751	Intermediate Filaments Antibody Sampler Kit	WB
#9776	Myosin Light Chain 2 Antibody Sampler Kit	WB
#5144	Myosin II Isoform Antibody Sampler Kit	WB IF
#5143	MYPT1 Antibody Sampler Kit	WB
#8678	Oncogene and Tumor Suppressor Antibody Sampler Kit	WB
#8653	Organelle Localization IF Antibody Sampler Kit	WB IF
#4750	PAK 1/2/3 Antibody Sampler Kit	WB
#9968	Rho-GTPase Antibody Sampler Kit	WB
#5145	Vav Isoform Antibody Sampler Kit	WB
#9775	Vimentin Antibody Sampler Kit	WB

IMMUNOLOGY AND INFLAMMATION

#9768	B Cell Signaling Antibody Sampler Kit	WB
#9958	Phospho-IKKα/β (Ser176/180) Antibody Sampler Kit	WB
#9966	IKK Isoform Antibody Sampler Kit	WB
#4769	IRAK Isoform Antibody Sampler Kit	WB
#9945	Jak Isoform Sampler Kit	WB
#8343	Jak/Stat Pathway Inhibitors Antibody Sampler Kit	WB
#4766	NF-κB Family Member Antibody Sampler Kit	WB
#4767	NF-κB p65 Antibody Sampler Kit	WB IP
#9936	NF-κB Pathway Sampler Kit	WB
#4888	NF-κB Non-Canonical Pathway Antibody Sampler Kit	WB
#9779	Pim Kinase Antibody Sampler Kit	WB
#8348	Rig-I Pathway Antibody Sampler Kit	WB
#9914	Phospho-Stat Antibody Sampler Kit	WB

APPLICATION KEY: WB Western Blotting IP Immunoprecipitation IHC Immunohistochemistry IF Immunofluorescence F Flow Cytometry

#8113 SignalStain® Phospho-Stat IHC Sampler Kit			IHC
#9939 Stat Antibody Sampler Kit	WB	IP	
#9925 Phospho-Syk Antibody Sampler Kit	WB		
#9382 T Cell Signaling Antibody Sampler Kit	WB		
#9971 Toll-like Receptor Antibody Sampler Kit	WB		

MAP KINASE SIGNALING

#9328 c-Oncogene Antibody Sampler Kit	WB		
#9911 Phospho-Erk1/2 Pathway Sampler Kit	WB		
#8333 Fos Family Antibody Sampler Kit	WB		
#9329 MAPKAPK-2 Antibody Sampler Kit	WB		
#9910 Phospho-MAPK Family Antibody Sampler Kit	WB	IP	IHC
#9926 MAPK Family Antibody Sampler Kit	WB		
#9913 Phospho-p38 MAPK Pathway Sampler Kit	WB		
#9790 p38 MAPK Isoform Activation Antibody Sampler Kit	WB	IP	
#9326 p90RSK Antibody Sampler Kit	WB		
#2330 Raf Family Antibody Sampler Kit	WB		
#9912 Phospho-SAPK/JNK Pathway Antibody Sampler Kit	WB		
#8357 Stress and Apoptosis Antibody Sampler Kit	WB		

NEUROSCIENCE

#9784 Alzheimer Disease Antibody Sampler Kit	WB		
#8652 AMPA Receptor Antibody Sampler Kit	WB		
#5887 γ Secretase Antibody Sampler Kit	WB		
#9781 Neurofilament Antibody Sampler Kit	WB	IHC	IF
#8572 Neuronal Marker IF Antibody Sampler Kit			IF
#8648 Parkinson's Research Antibody Sampler Kit	WB		
#8630 Synaptic Vesicle Antibody Sampler Kit	WB		
#4638 TrkA and TrkB Antibody Sampler Kit	WB		

NUCLEAR RECEPTOR SIGNALING

#9924 Phospho-Estrogen Receptor α Antibody Sampler Kit	WB		
#8595 Nuclear Receptor Antibody Sampler Kit	WB		
#8660 PPAR γ Regulated Fatty Acid Metabolism Antibody Sampler Kit	WB		
#8589 Retinoic Acid and Retinoid X Receptors Antibody Sampler Kit	WB		

PHOSPHATASES

#9780 PP2A Antibody Sampler Kit	WB		
#9793 SHP-2 Antibody Sampler Kit	WB	IP	

PI3 KINASE/AKT SIGNALING

#9916 Phospho-Akt Pathway Antibody Sampler Kit	WB		
#9940 Akt Isoform Antibody Sampler Kit	WB		
#8107 SignalStain® Akt Pathway IHC Sampler Kit	WB		IHC
#9946 Forkhead Signaling Antibody Sampler Kit	WB		
#9369 GSK-3 Antibody Sampler Kit	WB		
#9964 mTOR Pathway Antibody Sampler Kit	WB		
#9864 mTOR Regulation Antibody Sampler Kit	WB		
#9862 mTOR Substrates Antibody Sampler Kit	WB		
#8678 Oncogene and Tumor Suppressor Antibody Sampler Kit	WB		
#9655 PI3 Kinase Antibody Sampler Kit	WB		
#9652 PTEN and PDK1 Antibody Sampler Kit	WB		
#9778 Rag Protein Antibody Sampler Kit	WB		
#8665 Rag and LAMTOR Antibody Sampler Kit	WB		
#8350 Phospho-TSC2 Antibody Sampler Kit	WB		

POST-TRANSLATIONAL MODIFICATION SPECIFIC MOTIFS

#9615 Phospho-(Ser) Kinase Substrate Antibody Sampler Kit	WB		
#9920 Phospho-(Ser/Thr) Kinase Substrate Antibody Sampler Kit	WB		

PROTEIN FOLDING AND TRAFFICKING

#9965 HSP/Chaperone Antibody Sampler Kit	WB		
#4889 Protein Folding and Stability Antibody Sampler Kit	WB		
#9385 Rab Family Antibody Sampler Kit	WB		
#9765 Vesicle Trafficking Antibody Sampler Kit	WB		

STEM CELL MARKERS, DEVELOPMENT, AND DIFFERENTIATION

#2951 β -Catenin Antibody Sampler Kit	WB		
#8358 Hedgehog Signaling Antibody Sampler Kit	WB		
#8579 Hippo Signaling Antibody Sampler Kit	WB		
#9092 StemLight™ iPS Cell Reprogramming Antibody Kit			IF
#3640 Notch Isoform Antibody Sampler Kit	WB		
#8658 Notch Receptor Interaction Antibody Sampler Kit	WB		
#9656 StemLight™ Pluripotency Antibody Kit			IF
#9094 StemLight™ Pluripotency Surface Marker Antibody Kit			IF F
#9093 StemLight™ Pluripotency Transcription Factor Antibody Kit	WB	IP	
#9383 TCF/LEF1 Antibody Sampler Kit	WB		
#2915 Wnt Signaling Antibody Sampler Kit	WB		

TRANSLATIONAL CONTROL, PROTEIN SYNTHESIS, AND RNA REGULATION

#9955 4E-BP Antibody Sampler Kit	WB		
#4759 ER Protein Folding Antibody Sampler Kit	WB		
#9956 ER Stress Antibody Sampler Kit	WB		
#8653 Organelle Localization IF Antibody Sampler Kit	WB		IF
#2903 p70 S6 Kinase Substrates Antibody Sampler Kit	WB		
#4487 RNAi Machinery Antibody Sampler Kit	WB	IP	
#9918 Translational Control Antibody Sampler Kit	WB		
#4763 Translation Initiation Complex Antibody Sampler Kit	WB		

TYROSINE KINASES

#9769 14-3-3 Family Antibody Sampler Kit	WB		
#8336 ALK Activation Antibody Sampler Kit	WB		
#9794 c-Cbl Antibody Sampler Kit	WB		
#9370 c-Kit Antibody Sampler Kit	WB		
#9922 Phospho-EGF Receptor Antibody Sampler Kit	WB		
#9789 Phospho-EGF Receptor Pathway Antibody Sampler Kit	WB		
#8111 SignalStain® Phospho-ErbB Family IHC Sampler Kit			IHC
#9330 FAK Antibody Sampler Kit	WB	IP	
#9791 Gab Antibody Sampler Kit	WB		
#9923 Phospho-HER2/ErbB2 Antibody Sampler Kit	WB		
#8339 HER/ErbB Family Antibody Sampler Kit	WB		
#3019 Met Signaling Antibody Sampler Kit	WB		
#8678 Oncogene and Tumor Suppressor Antibody Sampler Kit	WB		
#9360 PDGF Receptor α Antibody Sampler Kit	WB		
#9970 PDGF Receptor β Antibody Sampler Kit	WB		
#9935 Src Antibody Sampler Kit	WB		
#9320 Src Family Antibody Sampler Kit	WB		

UBIQUITIN AND UBIQUITIN-LIKE PROTEINS

#8353 DUB Antibody Sampler Kit	WB		
#8645 Ubiquitin Activation (E1, E2 Enzymes) Antibody Sampler Kit	WB		

APPLICATION KEY: WB Western Blotting IP Immunoprecipitation IHC Immunohistochemistry IF Immunofluorescence F Flow Cytometry





UNITED STATES

Hours: M–F 8:30AM to 8:00PM [EST]

Orders: 877-616-2355 | orders@cellsignal.com

Support: 877-678-8324 | support@cellsignal.com

www.cellsignal.com

CHINA

Tel: +86-21-58356288

Support (China): 4006-473287/GreatQ | tech@cst-c.com.cn

Support (Asia Pacific): csttechasia@cst-c.com.cn

www.cst-c.com.cn

EUROPE, MIDDLE EAST & AFRICA

Tel: +31 (0)71 568 1060

E-mail: eusupport@cellsignal.eu

www.cellsignal.com

JAPAN

Tel: 03-3295-1630 | Support: info@cstj.co.jp

www.cstj.co.jp

AUTHORIZED DISTRIBUTORS

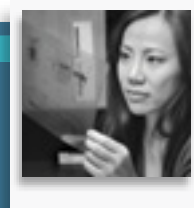
See a full list of our distributors online.

www.cellsignal.com/distributors

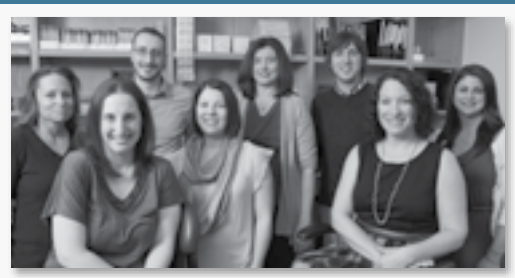
WWW.CELLSIGNAL.COM

CST Antibody Performance Guarantee

To learn more, please visit: www.cellsignal.com/abguarantee.



FRONT COVER PHOTO:
Taylor, Research Associate,
has been with CST for over 8 years.



Immunofluorescence Group, Beverly, MA USA

FOUNDED BY RESEARCH SCIENTISTS IN 1999, Cell Signaling Technology (CST) is a private, family-owned company with over 400 employees worldwide. Active in the field of applied systems biology research, particularly as it relates to cancer, CST understands the importance of using antibodies with high levels of specificity and lot-to-lot consistency. It's why we produce all of our antibodies in house, and perform painstaking validations for multiple applications. And the same CST scientists who produce our antibodies also provide technical support for customers, helping them design experiments, troubleshoot, and achieve reliable results. We do this because that's what we'd want if we were in the lab. Because, actually, we are.