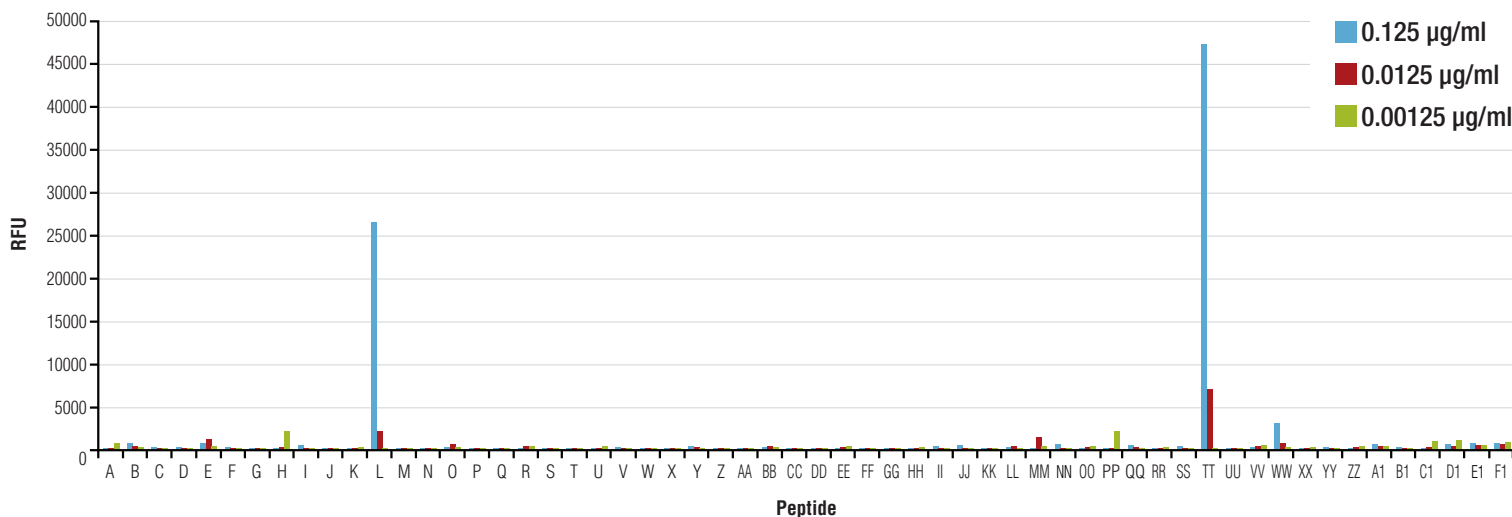


Tri-Methyl-Histone H3 (Lys27) (C36B11) Rabbit mAb #9733

Tri-Methyl Histone H3 (Lys27) (C36B11) Rabbit mAb is highly specific for tri-methyl-histone H3 (Lys27) and is not affected by methylation at Arg26.



A	H3 (Lys4) non-methyl	T	H3 (Lys79) tri-methyl	II	H3 (Arg2) asymmetric-di-methyl/(Lys4) mono-methyl	UU	H3 (Lys27) mono-methyl/(Ser28) phospho
B	H3 (Lys4) mono-methyl	U	H4 (Lys20) non-methyl	JJ	H3 (Arg2) asymmetric-di-methyl/(Lys4) di-methyl	VV	H3 (Lys27) di-methyl/(Ser28) phospho
C	H3 (Lys4) di-methyl	V	H4 (Lys20) mono-methyl	KK	H3 (Arg2) asymmetric-di-methyl/(Lys4) tri-methyl	WW	H3 (Lys27) tri-methyl/(Ser28) phospho
D	H3 (Lys4) tri-methyl	W	H4 (Lys20) di-methyl	LL	H3 (Arg8) symmetric-di-methyl/(Lys9) mono-methyl	XX	H3 (Lys9) mono-methyl/(Ser10/Thr11) phospho
E	H3 (Lys9) non-methyl	X	H4 (Lys20) tri-methyl	MM	H3 (Arg8) symmetric-di-methyl/(Lys9) di-methyl	YY	H3 (Lys9) di-methyl/(Ser10/Thr11) phospho
F	H3 (Lys9) mono-methyl	Y	H2A (Lys5) non-methyl	NN	H3 (Arg8) symmetric-di-methyl/(Lys9) tri-methyl	ZZ	H3 (Lys9) tri-methyl/(Ser10/Thr11) phospho
G	H3 (Lys9) di-methyl	Z	H2A (Lys5) mono-methyl	OO	H3 (Lys9) mono-methyl/(Ser10) phospho	A1	H3 (Thr6) phospho/(Lys9) tri-methyl
H	H3 (Lys9) tri-methyl	AA	H2A (Lys5) di-methyl	PP	H3 (Lys9) di-methyl/(Ser10) phospho	B1	H3 (Lys4) di-methyl/(Thr6) phospho
I	H3 (Lys27) non-methyl	BB	H2A (Lys5) tri-methyl	QQ	H3 (Lys9) tri-methyl/(Ser10) phospho	C1	H3 (Lys4) mono-methyl/(Thr6) phospho
J	H3 (Lys27) mono-methyl	CC	H3 (Thr3) phospho/(Lys4) mono-methyl	RR	H3 (Arg26) asymmetric-di-methyl/(Lys27) mono-methyl	D1	H3 (Lys4) tri-methyl/(Thr6) phospho
K	H3 (Lys27) di-methyl	DD	H3 (Thr3) phospho/(Lys4) di-methyl	SS	H3 (Arg26) asymmetric-di-methyl/(Lys27) di-methyl	E1	H3 (Thr6) phospho/(Lys9) di-methyl
L	H3 (Lys27) tri-methyl	EE	H3 (Thr3) phospho/(Lys4) tri-methyl	TT	H3 (Arg26) asymmetric-di-methyl/(Lys27) tri-methyl	F1	H3 (Thr6) phospho/(Lys9) mono-methyl
M	H3 (Lys36) non-methyl	FF	H3 (Arg2) symmetric-di-methyl/(Lys4) mono-methyl				
N	H3 (Lys36) mono-methyl	GG	H3 (Arg2) symmetric-di-methyl/(Lys4) di-methyl				
O	H3 (Lys36) di-methyl	HH	H3 (Arg2) symmetric-di-methyl/(Lys4) tri-methyl				
P	H3 (Lys36) tri-methyl						
Q	H3 (Lys79) non-methyl						
R	H3 (Lys79) mono-methyl						
S	H3 (Lys79) di-methyl						