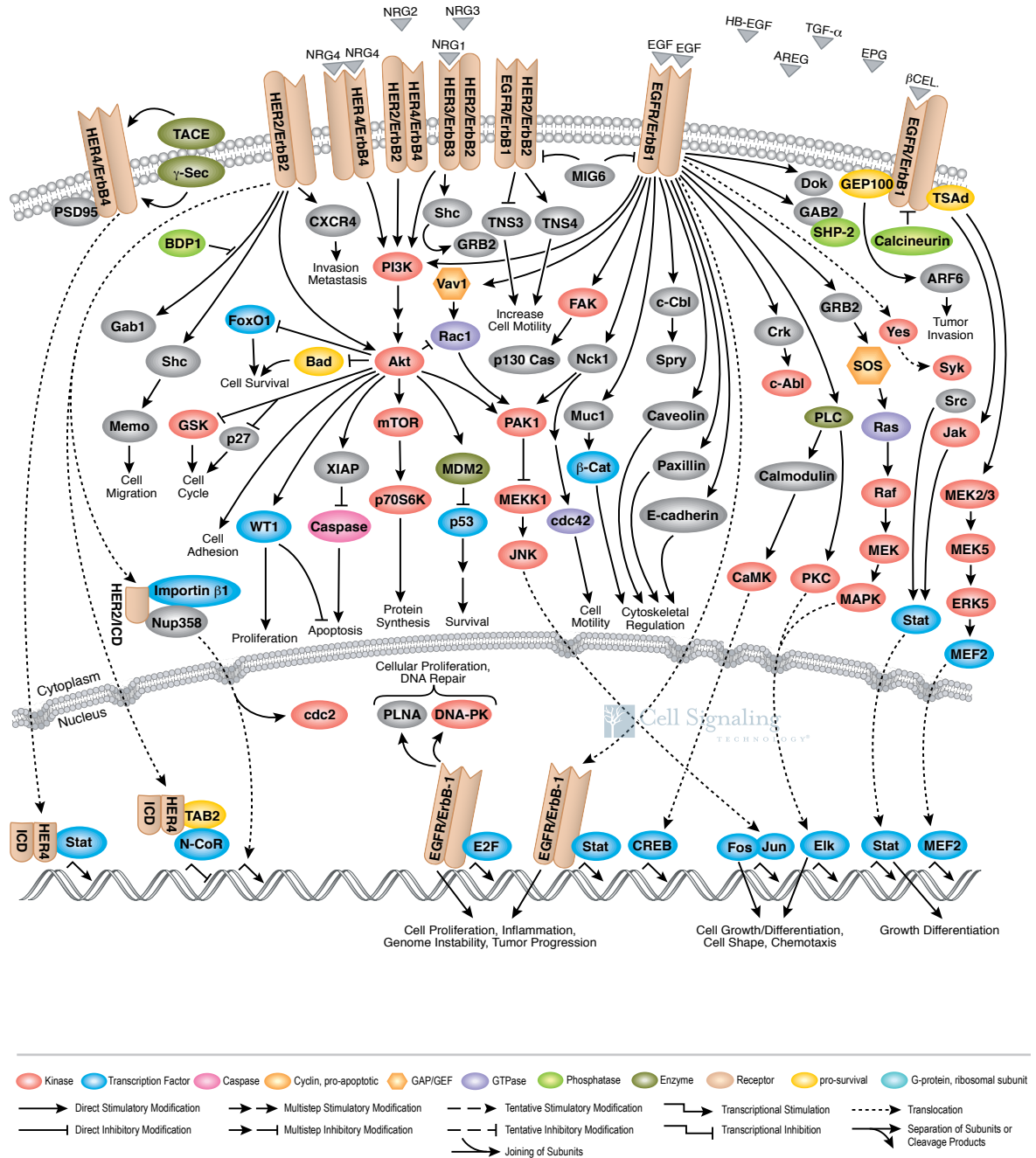


Antibodies and Related Reagents for Tyrosine Kinases and Docking Proteins

Product Pathways

- Motif Antibodies
- Chromatin Regulation
- MAP Kinase Signaling
- Apoptosis and Autophagy
- PI3K / Akt Signaling
- Cellular Metabolism
- Translational Control
- Development and Differentiation
- Stem Cell and Lineage Markers
- Ca²⁺, cAMP, and Lipid Signaling
- Cell Cycle/Checkpoint Control
- NF-κB Signaling
- Lymphocyte Signaling
- Neuroscience
- > Tyrosine Kinases and Docking Proteins
- Angiogenesis
- Nuclear Receptors and Phosphatases
- Cytoskeletal Signaling
- Adhesion
- Protein Folding and Stability

HER and ErbB Signaling



For Research Use Only.
Not For Use In
Diagnostic Procedures.

Tyrosine Kinases and Docking Proteins

PathScan® Sandwich ELISA

	#7982 PathScan® RTK Signaling Antibody Array Kit (Chemiluminescent Readout)
	#7949 PathScan® RTK Signaling Antibody Array Kit (Fluorescent Readout)
	#7159 PathScan® Phospho-ALK (Tyr1586) Sandwich ELISA Kit
	#7324 PathScan® Phospho-ALK (Tyr1604) Sandwich ELISA Kit
	#7322 PathScan® Total ALK Sandwich ELISA Kit
	#7042 PathScan® Phospho-Axl (panTyr) Sandwich ELISA Kit
	#7040 PathScan® Total Axl Sandwich ELISA Kit
	#7189 PathScan® Phospho-EGF Receptor (Tyr845) Sandwich ELISA Kit
	#7036 PathScan® Phospho-EGF Receptor (Tyr1068) Chemiluminescent Sandwich ELISA Kit
	#7240 PathScan® Phospho-EGF Receptor (Tyr1068) Sandwich ELISA Kit
	#7187 PathScan® Phospho-EGF Receptor (Tyr1173) Sandwich ELISA Kit
New	#8950 PathScan® EGF Receptor (E746-A750del Specific) Sandwich ELISA Kit
New	#8951 PathScan® EGF Receptor (L858R Mutant Specific) Sandwich ELISA Kit
	#7250 PathScan® Total EGF Receptor Sandwich ELISA Kit
	#7954 PathScan® Phospho-FGFR2 (panTyr) Sandwich ELISA Kit
	#7939 PathScan® Total FGFR2 Sandwich ELISA Kit
	#7021 PathScan® Phospho-FLT3 (Tyr591) Chemiluminescent Sandwich ELISA Kit
	#7206 PathScan® Phospho-FLT3 (Tyr591) Sandwich ELISA Kit
	#7202 PathScan® Total FLT3 Sandwich ELISA Kit
	#7148 PathScan® Phospho-HER2/ErbB2 (Tyr1221/1222) Sandwich ELISA Kit
	#7817 PathScan® Phospho-HER2/ErbB2 (Tyr1221/1222) Sandwich ELISA Antibody Pair
	#7968 PathScan® Phospho-HER2/ErbB2 (panTyr) Sandwich ELISA Kit
	#7310 PathScan® Total HER2/ErbB2 Sandwich ELISA Kit
	#7890 PathScan® Phospho-HER3/ErbB3 (panTyr) Sandwich ELISA Kit
	#7888 PathScan® Total HER3/ErbB3 Sandwich ELISA Kit
	#7197 PathScan® Total c-Kit Sandwich ELISA Kit
	#7936 PathScan® Phospho-LAT (Tyr191) Sandwich ELISA Kit
	#7941 PathScan® Phospho-Lck (Tyr505) Sandwich ELISA Kit
	#7993 PathScan® Phospho-Lck (Tyr505) Sandwich ELISA Antibody Pair
	#7241 PathScan® Phospho-Met (Tyr1003) Sandwich ELISA Kit
	#7227 PathScan® Phospho-Met (Tyr1234/1235) Sandwich ELISA Kit
	#7229 PathScan® Phospho-Met (Tyr1234/1235) Sandwich ELISA Antibody Pair
	#7896 PathScan® Phospho-Met (Tyr1349) Sandwich ELISA Kit

	#7333 PathScan® Phospho-Met (panTyr) Sandwich ELISA Kit
	#7334 PathScan® Phospho-Met (panTyr) Sandwich ELISA Antibody Pair
	#7242 PathScan® Total Met Sandwich ELISA Kit
	#7235 PathScan® Phospho-PDGF Receptor α/β (panTyr) Sandwich ELISA Kit
	#7307 PathScan® Phospho-PDGF Receptor α/β (panTyr) Sandwich ELISA Antibody Pair
	#7296 PathScan® Phospho-PDGF Receptor α (Tyr849) Sandwich ELISA Kit
	#7317 PathScan® Phospho-PDGF Receptor α (Tyr849) Sandwich ELISA Antibody Pair
	#7318 PathScan® Total PDGF Receptor α Sandwich ELISA Kit
	#7264 PathScan® Total PDGF Receptor α Sandwich ELISA Antibody Pair
	#7345 PathScan® Phospho-PDGF Receptor β (Tyr751) Sandwich ELISA Kit
	#7826 PathScan® Phospho-PDGF Receptor β (Tyr751) Sandwich ELISA Antibody Pair
	#7091 PathScan® Total Ros Sandwich ELISA Kit
	#7953 PathScan® Phospho-Src (Tyr416) Sandwich ELISA Kit
	#7963 PathScan® Phospho-Src (Tyr416) Sandwich ELISA Antibody Pair
	#7984 PathScan® Total Src Sandwich ELISA Kit
	#7992 PathScan® Total Src Sandwich ELISA Antibody Pair
	#7970 PathScan® Phospho-Syk (Tyr525/526) Sandwich ELISA Kit
	#7335 PathScan® Phospho-VEGFR-2 (Tyr1175) Sandwich ELISA Kit
	#7824 PathScan® Phospho-VEGFR-2 (Tyr1175) Sandwich ELISA Antibody Pair
	#7340 PathScan® Total VEGFR-2 Sandwich ELISA Kit
	#7825 PathScan® Total VEGFR-2 Sandwich ELISA Antibody Pair
	#7171 PathScan® Phospho-Zap-70 (Tyr319) Sandwich ELISA Kit
	#7852 PathScan® Phospho-Zap-70 (Tyr319) Sandwich ELISA Antibody Pair
	#7172 PathScan® Total Zap-70 Sandwich ELISA Kit
	#7850 PathScan® Total Zap-70 Sandwich ELISA Antibody Pair

SignalSilence® siRNA

	#6218 SignalSilence® β -Arrestin 1 siRNA I
	#6263 SignalSilence® Axl siRNA I
	#6264 SignalSilence® Axl siRNA II
	#6480 SignalSilence® EGF Receptor siRNA I
	#6482 SignalSilence® EGF Receptor siRNA II
	#6472 SignalSilence® FAK siRNA I
	#6483 SignalSilence® FAK siRNA II
	#6282 SignalSilence® HER2/ErbB2 siRNA I
	#6283 SignalSilence® HER2/ErbB2 siRNA II

	#6504 SignalSilence® HER3/ErbB3 siRNA I
	#6422 SignalSilence® HER3/ErbB3 siRNA II
	#6618 SignalSilence® Met siRNA I
	#6622 SignalSilence® Met siRNA II

Controls

	#1110 Phospho-EGF Receptor (Tyr1068) Blocking Peptide
	#1175 Phospho-EGF Receptor (Tyr1173) Blocking Peptide
	#8102 SignalSlide® Phospho-EGF Receptor IHC Controls
	#5634 EGF Receptor Control Cell Extracts
	#8117 SignalSlide® Phospho-ErbB Family IHC Controls
	#1254 Phospho-HER2/ErbB2 (Tyr1221/1222) Blocking Peptide
	#1059 HER2/ErbB2 Blocking Peptide
	#1180 Phospho-HER3/ErbB3 (Tyr1289) Blocking Peptide
	#1645 Phospho-Met (Tyr1234/1235) Blocking Peptide
	#8118 SignalSlide® Phospho-Met (Tyr1234/1235) IHC Controls
	#1235 Src Blocking Peptide
	#2904 VEGF Receptor 2 Control Proteins

Growth Factors and Cytokines

	#8916 Human Epidermal Growth Factor (hEGF)
	#5493 Human Epigen
	#5494 Human Epregrulin
	#5234 Human FGF acidic (hFGF acidic)
	#8910 Human Basic Fibroblast Growth Factor (hFGF basic/FGF2)
	#8924 Human Fms-related Tyrosine Kinase 3 Ligand (hFLT3L)
	#8929 Human Macrophage Colony Stimulating Factor (hM-CSF)
	#8913 Human Platelet-Derived Growth Factor AA (hPDGF-AA)
	#8912 Human Platelet-Derived Growth Factor BB (hPDGF-BB)
	#8925 Human Stem Cell Factor (hSCF)
	#5495 Human Transforming Growth Factor α (hTGF- α)
	#8908 Human Vascular Endothelial Growth Factor-121 (hVEGF ₁₂₁)
	#8065 Human Vascular Endothelial Growth Factor-165 (hVEGF ₁₆₅)
	#5314 Mouse Vascular Endothelial Growth Factor-120 (mVEGF ₁₂₀)
	#5211 Mouse Vascular Endothelial Growth Factor-164 (mVEGF ₁₆₄)
	#5874 Rat Vascular Endothelial Growth Factor-164 (rVEGF ₁₆₄)

Chemical Modulators

	#9842 Tyrphostin AG 1478
--	--------------------------

Supporting Products

We offer a growing list of complementary products to support your research, such as epitope tag antibodies, isotype controls, and secondary antibodies. Please see the supporting products section of our catalog at www.cellsignal.com/catalog/

Antibody Sampler Kits

- #9769 14-3-3 Family Antibody Sampler Kit
- #8336 ALK Activation Antibody Sampler Kit
- #9794 c-Cbl Antibody Sampler Kit
- #9922 Phospho-EGF Receptor Antibody Sampler Kit
- #9789 Phospho-EGF Receptor Pathway Antibody Sampler Kit
- #9330 FAK Antibody Sampler Kit
- #9791 Gab Antibody Sampler Kit
- #9923 Phospho-HER2/ErbB2 Antibody Sampler Kit
- #8339 HER/ErbB Family Antibody Sampler Kit
- #8111 SignalStain® Phospho-ErbB Family IHC Sampler Kit
- #9370 c-Kit Antibody Sampler Kit
- #3019 Met Signaling Antibody Sampler Kit
- #9360 PDGF Receptor α Antibody Sampler Kit
- #9970 PDGF Receptor β Antibody Sampler Kit
- #9935 Src Antibody Sampler Kit
- #9320 Src Family Antibody Sampler Kit
- #9925 Phospho-Syk Antibody Sampler Kit
- #9382 T Cell Signaling Antibody Sampler Kit

PathScan® Multiplex IF Kits

- #7967 PathScan® EGF Receptor Activation Multiplex IF Kit

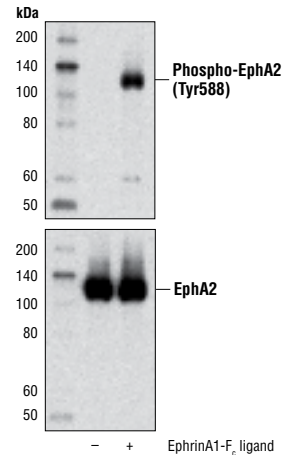
PhosphoPlus® Antibody Duets

- #8218 PhosphoPlus® Met (Tyr1234/Tyr1235) Antibody Duet

Antibodies

- #9606 Phospho-(Ser) 14-3-3 Binding Motif (4E2) Mouse mAb
- #9601 Phospho-(Ser) 14-3-3 Binding Motif Antibody
- #8312 14-3-3 (pan) Antibody
- #9636 14-3-3 β/α Antibody
- #5522 14-3-3 γ (D15B7) Rabbit mAb
- #9637 14-3-3 γ Antibody
- #9638 14-3-3 τ Antibody
- New** #7413 14-3-3 ζ/δ (D7H5) Rabbit mAb
- #9639 14-3-3 ζ/δ Antibody
- #9635 14-3-3 ϵ Antibody
- #5521 14-3-3 η (D23B7) Rabbit mAb
- #9640 14-3-3 η Antibody
- #3098 Phospho-c-Abl (Tyr89) (61A6) Rabbit mAb
- #3009 Phospho-c-Abl (Tyr204) (C42B5) Rabbit mAb
- #2868 Phospho-c-Abl (Tyr245) (73E5) Rabbit mAb
- #2861 Phospho-c-Abl (Tyr245) Antibody
- #2865 Phospho-c-Abl (Tyr412) (247C7) Rabbit mAb
- #2864 Phospho-c-Abl (Thr735) Antibody

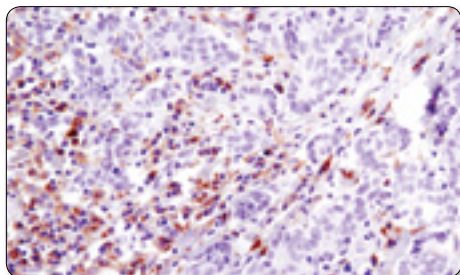
- #2862 c-Abl Antibody
- #3138 Phospho-Ack1 (Tyr284) Antibody
- #3097 Phospho-Ack1 (Tyr857/858) (C57E10) Rabbit mAb
- #3137 Phospho-Ack1 (Tyr857/858) Antibody
- #4144 Phospho-ALK (Tyr1078) Antibody
- #6962 Phospho-ALK (Tyr1096) (D96H9) Rabbit mAb
- #4143 Phospho-ALK (Tyr1096) Antibody
- #6941 Phospho-ALK (Tyr1278) (D59G10) Rabbit mAb
- #3710 Phospho-ALK (Tyr1278) Antibody
- #3983 Phospho-ALK (Tyr1278/1282/1283) Antibody
- New** #9687 Phospho-ALK (Tyr1282/1283) (D39B2) Rabbit mAb
- #3714 Phospho-ALK (Tyr1282/1283) Antibody
- #3348 Phospho-ALK (Tyr1586) (3B4) Rabbit mAb
- #3343 Phospho-ALK (Tyr1586) Antibody
- #3341 Phospho-ALK (Tyr1604) Antibody
- #3333 ALK (C26G7) Rabbit mAb
- #5611 ALK (C26G7) Rabbit mAb (Sepharose Bead Conjugate)
- #3791 ALK (31F12) Mouse mAb
- #2948 Angiotensin-2 Antibody
- #4832 APS Antibody
- #2416 Phospho- β -Arrestin 1 (Ser412) (6-24) Mouse mAb
- #4674 β -Arrestin 1/2 (D24H9) Rabbit mAb
- #3857 β -Arrestin 2 (C16D9) Rabbit mAb
- #5724 Phospho-Axl (Tyr702) (D12B2) Rabbit mAb
- #4939 Axl (C2B12) Rabbit mAb
- #4566 Axl (C44G1) Rabbit mAb
- #3269 Axl (L283) Antibody
- #4977 Axl Antibody
- #3901 Phospho-Bcr (Tyr177) Antibody
- #3902 Bcr Antibody
- #3908 Bcr-Abl (b2a2 Junction Specific) (L99H4) Mouse mAb
- #3262 Blk Antibody
- #3537 Phospho-Btk (Ser180) (3D3) Mouse mAb
- #3533 Btk (C82B8) Rabbit mAb
- New** #8547 Btk (D3H5) Rabbit mAb
- #3554 Phospho-c-Cbl (Tyr731) Antibody
- #3555 Phospho-c-Cbl (Tyr774) Antibody
- #2179 c-Cbl (C49H8) Rabbit mAb
- #8447 c-Cbl (D4E10) Rabbit mAb
- #2747 c-Cbl Antibody
- New** #8160 Cbl-b Antibody
- #3491 Phospho-Crkl (Tyr221) Antibody
- #3492 Crkl Antibody
- #3181 Phospho-Crkl (Tyr207) Antibody
- #3182 Crkl (32H4) Mouse mAb
- #4980 Csk (C74C1) Rabbit mAb
- #3327 Phospho-Dab1 (Tyr220) Antibody
- #3325 Phospho-Dab1 (Tyr232) Antibody



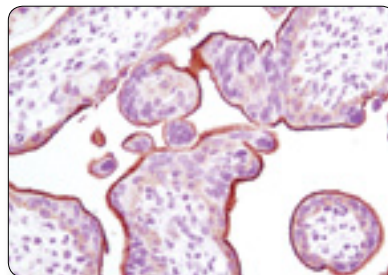
Phospho-EphA2 (Tyr588) Antibody

#7423: Western blot analysis of extracts from SNB19 cells, untreated (-) or treated (+) with EphrinA1-F_c ligand (100 ng/ml, 5 min), using #7423 (upper) or EphA2 (D4A2) XP® Rabbit mAb #6997 (lower).

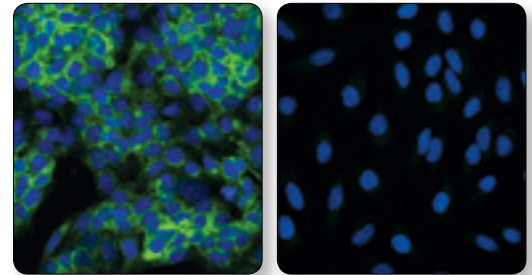
- #3328 Dab1 Antibody
- New** #8582 Dab2 Antibody
- XP** #5583 DDR1 (D1G6) XP® Rabbit mAb
- #3917 DDR1 Antibody
- #4846 DOCK180 (C4C12) Rabbit mAb
- #3911 Phospho-p56Dok-2 (Tyr351) Antibody
- #3914 p56Dok-2 Antibody
- #3912 p62Dok Antibody
- #3056 Phospho-EGF Receptor (Thr669) Antibody
- #6963 Phospho-EGF Receptor (Tyr845) (D63B4) Rabbit mAb
- #2231 Phospho-EGF Receptor (Tyr845) Antibody
- #2235 Phospho-EGF Receptor (Tyr992) Antibody
- #2641 Phospho-EGF Receptor (Tyr998) (C24A5) Rabbit mAb
- #2237 Phospho-EGF Receptor (Tyr1045) Antibody
- #2238 Phospho-EGF Receptor (Ser1046/1047) Antibody
- XP** #3777 Phospho-EGF Receptor (Tyr1068) (D7A5) XP® Rabbit mAb
- XP** #8543 Phospho-EGF Receptor (Tyr1068) (D7A5) XP® Rabbit mAb (Biotinylated)
- #2234 Phospho-EGF Receptor (Tyr1068) Antibody
- #2236 Phospho-EGF Receptor (Tyr1068) (1H12) Mouse mAb
- #4031 Phospho-EGF Receptor (Tyr1068) (1H12) Mouse mAb (Biotinylated)
- #6625 Phospho-EGF Receptor (Tyr1068) (1H12) Mouse mAb (Sepharose Bead Conjugate)



Btk (D3H5) Rabbit mAb #8547: IHC analysis of paraffin-embedded human colon carcinoma using #8547. Note staining of inflammatory cells.

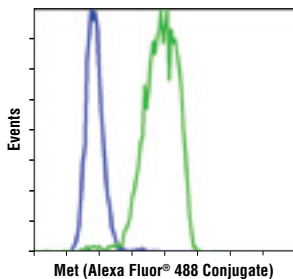


EGF Receptor (D38B1) XP® Rabbit mAb #4267: IHC analysis of paraffin-embedded human placenta using #4267.



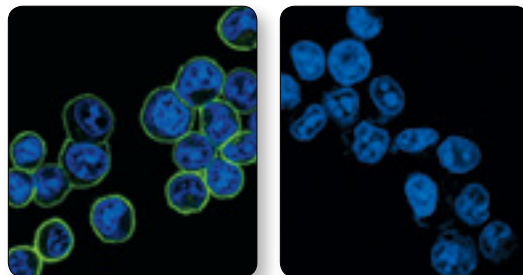
FGF Receptor 4 (D3B12) XP® Rabbit mAb #8562: Confocal IF analysis of Hep G2 (left) and HeLa (right) cells using #8562 (green). Blue pseudocolor = DRAQ5® #4084 (fluorescent DNA dye).

- #2220 Phospho-EGF Receptor (Tyr1086) Antibody
- #4404 Phospho-EGF Receptor (Tyr1148) Antibody
- #4407 Phospho-EGF Receptor (Tyr1173) (53A5) Rabbit mAb
- XP** #2085 EGF Receptor (E746-A750del Specific) (6B6) XP[®] Rabbit mAb
- #3197 EGF Receptor (L858R Mutant Specific) (43B2) Rabbit mAb
- #5354 EGF Receptor (L858R Mutant Specific) (43B2) Rabbit mAb (Biotinylated)
- XP** #4267 EGF Receptor (D38B1) XP[®] Rabbit mAb
- XP** #5616 EGF Receptor (D38B1) XP[®] Rabbit mAb (Alexa Fluor[®] 488 Conjugate)
- XP** #5108 EGF Receptor (D38B1) XP[®] Rabbit mAb (Alexa Fluor[®] 555 Conjugate)
- XP** #5588 EGF Receptor (D38B1) XP[®] Rabbit mAb (Alexa Fluor[®] 647 Conjugate)
- XP** #6627 EGF Receptor (D38B1) XP[®] Rabbit mAb (Biotinylated)
- XP** #8839 EGF Receptor (D38B1) XP[®] Rabbit mAb (PE Conjugate)
- XP** #6937 EGF Receptor (D38B1) XP[®] Rabbit mAb (Magnetic Bead Conjugate)
- XP** #5735 EGF Receptor (D38B1) XP[®] Rabbit mAb (Sephacrose Bead Conjugate)
- #4405 EGF Receptor (15F8) Rabbit mAb
- #2646 EGF Receptor (C74B9) Rabbit mAb
- #2963 EGF Receptor (T43) Antibody
- #3265 EGF Receptor (V279) Antibody
- #2232 EGF Receptor Antibody
- #2239 EGF Receptor (1F4) Mouse mAb
- #2256 EGF Receptor (EGFR1) Mouse mAb (IP Specific)
- New** #8083 EGF Receptor (EGFR1) Mouse mAb (Sephacrose Bead Conjugate)
- New** #7423 Phospho-EphA2 (Tyr588) Antibody
- #3970 Phospho-EphA2 (Tyr594) Antibody
- #8244 Phospho-EphA2 (Tyr772) Antibody
- XP** #6997 EphA2 (D4A2) XP[®] Rabbit mAb
- #3974 EphA2 Antibody
- #3481 Phospho-Ephrin B (Tyr324/329) Antibody
- #3980 EphB1 (5F10) Mouse mAb
- New** #8855 Eps15 Antibody
- #3211 Phospho-Etk (Tyr40) Antibody
- #8556 Phospho-FAK (Tyr397) (D20B1) Rabbit mAb
- #3283 Phospho-FAK (Tyr397) Antibody
- #3281 Phospho-FAK (Tyr576/577) Antibody
- #3284 Phospho-FAK (Tyr925) Antibody
- #3285 FAK Antibody
- #2877 FE65 Antibody
- #4268 Fer (5D2) Mouse mAb
- #2736 Fes Antibody



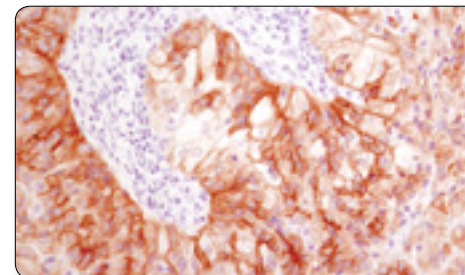
Met (D1C2) XP[®] Rabbit mAb (Alexa Fluor[®] 488 Conjugate) #8494: Flow cytometric analysis of K-562 (blue) and HT-29 (green) cells using #8494.

- #3139 Acidic FGF (11H11) Rabbit mAb
- #3196 Basic FGF (19A9) Rabbit mAb
- #3471 Phospho-FGF Receptor (Tyr653/654) Antibody
- #3476 Phospho-FGF Receptor (Tyr653/654) (55H2) Mouse mAb
- #2544 Phospho-FGF Receptor 1 (Tyr766) (1E5) Rabbit mAb
- #3472 FGF Receptor 1 Antibody
- #4574 FGF Receptor 3 (C51F2) Rabbit mAb
- #3163 FGF Receptor 3 (D2G7E) Rabbit mAb
- #3160 FGF Receptor 3 Antibody
- New XP** #8562 FGF Receptor 4 (D3B12) XP[®] Rabbit mAb
- #2894 FGF Receptor 4 Antibody
- #2755 Fgr Antibody
- #3464 Phospho-FLT3 (Tyr589/591) (30D4) Rabbit mAb
- #3474 Phospho-FLT3 (Tyr591) (33G6) Rabbit mAb
- #3461 Phospho-FLT3 (Tyr591) Antibody
- #3466 Phospho-FLT3 (Tyr591) (54H1) Mouse mAb
- #4577 Phospho-FLT3 (Tyr842) (10A8) Rabbit mAb
- #3463 Phospho-FLT3 (Tyr969) (C24D9) Rabbit mAb
- #3462 FLT3 (8F2) Rabbit mAb
- #3864 Phospho-FRS2- α (Tyr196) Antibody
- #3861 Phospho-FRS2- α (Tyr436) Antibody
- #4023 Fyn Antibody
- #3234 Phospho-Gab1 (Tyr307) Antibody
- #3233 Phospho-Gab1 (Tyr627) (C32H2) Rabbit mAb
- #3231 Phospho-Gab1 (Tyr627) Antibody
- #3232 Gab1 Antibody
- #3884 Phospho-Gab2 (Ser159) Antibody
- #3882 Phospho-Gab2 (Tyr452) (C33G1) Rabbit mAb
- #3881 Phospho-Gab2 (Tyr452) Antibody
- #3239 Gab2 (26B6) Rabbit mAb
- #3972 GRB2 Antibody
- #3701 Phospho-GRB10 (Tyr67) Antibody
- #3702 GRB10 Antibody
- #4352 Hck Antibody
- #2241 Phospho-HER2/ErbB2 (Tyr877) Antibody
- #6942 Phospho-HER2/ErbB2 (Tyr1196) (D66B7) Rabbit mAb
- #2243 Phospho-HER2/ErbB2 (Tyr1221/1222) (6B12) Rabbit mAb
- #2249 Phospho-HER2/ErbB2 (Tyr1221/1222) Antibody
- #2247 Phospho-HER2/ErbB2 (Tyr1248) Antibody
- #2244 Phospho-HER2/ErbB2 (Tyr1248)/EGFR (Tyr1173) Antibody
- XP** #4290 HER2/ErbB2 (D8F12) XP[®] Rabbit mAb
- XP** #8609 HER2/ErbB2 (D8F12) XP[®] Rabbit mAb (Biotinylated)
- #2165 HER2/ErbB2 (29D8) Rabbit mAb



Phospho-Met (Tyr1234/1235) (D26) XP[®] Rabbit mAb #3077: Confocal IF analysis of MKN45 cells, untreated (left) or treated with SU11274 (1 μ M, 3 hours; right), using #3077. Blue pseudocolor = DRAQ5[®] #4084 (fluorescent DNA dye).

- #3250 HER2/ErbB2 (M45) Antibody
- #2242 HER2/ErbB2 Antibody
- #2248 HER2/ErbB2 (44E7) Mouse mAb
- #4561 Phospho-HER3/ErbB3 (Tyr1197) (C56E4) Rabbit mAb
- #4784 Phospho-HER3/ErbB3 (Tyr1222) (50C2) Rabbit mAb
- #4791 Phospho-HER3/ErbB3 (Tyr1289) (21D3) Rabbit mAb
- #8017 Phospho-HER3/ErbB3 (Tyr1328) Antibody
- #4754 HER3/ErbB3 (1B2E) Rabbit mAb
- #3790 Phospho-HER4/ErbB4 (Tyr984) Antibody
- #4757 Phospho-HER4/ErbB4 (Tyr1284) (21A9) Rabbit mAb
- #4795 HER4/ErbB4 (111B2) Rabbit mAb
- #2573 Heregulin Antibody
- #2380 Itk (2F12) Mouse mAb
- #3073 Phospho-c-Kit (Tyr703) (D12E12) Rabbit mAb
- #3391 Phospho-c-Kit (Tyr719) Antibody
- XP** #3074 c-Kit (D13A2) XP[®] Rabbit mAb
- XP** #5749 c-Kit (D13A2) XP[®] Rabbit mAb (Biotinylated)
- #3392 c-Kit Antibody
- #3308 c-Kit (Ab81) Mouse mAb
- #3310 c-Kit (Ab81) Mouse mAb (Alexa Fluor[®] 488 Conjugate)
- #2751 Phospho-Lck (Tyr505) Antibody
- XP** #2984 Lck (D88) XP[®] Rabbit mAb
- #2787 Lck (73A5) Rabbit mAb
- #2714 Lck (V49) Antibody
- #2752 Lck Antibody
- #2657 Lck (L22B1) Mouse mAb
- #2731 Phospho-Lyn (Tyr507) Antibody
- #2796 Lyn (C13F9) Rabbit mAb
- #2732 Lyn Antibody
- #4576 Lyn (5G2) Mouse mAb
- #3083 Phospho-M-CSF Receptor (Tyr546) Antibody
- #3399 Phospho-M-CSF Receptor (Tyr699) Antibody
- #3080 Phospho-M-CSF Receptor (Tyr708) Antibody
- #3155 Phospho-M-CSF Receptor (Tyr723) (49C10) Rabbit mAb
- #3151 Phospho-M-CSF Receptor (Tyr723) Antibody
- #3154 Phospho-M-CSF Receptor (Tyr809) Antibody
- #3406 Phospho-M-CSF Receptor (Tyr923) Antibody
- #3152 M-CSF Receptor Antibody
- XP** #4319 Mer (D21F11) XP[®] Rabbit mAb
- #9178 Mer (348E6) Mouse mAb
- #3135 Phospho-Met (Tyr1003) (13D11) Rabbit mAb
- XP** #3077 Phospho-Met (Tyr1234/1235) (D26) XP[®] Rabbit mAb

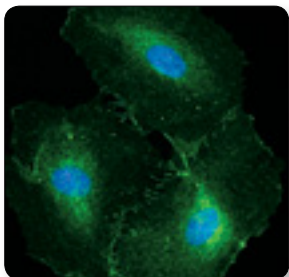


Met (D1C2) XP[®] Rabbit mAb #8198: IHC analysis of paraffin-embedded human metastatic lung carcinoma using #8198.

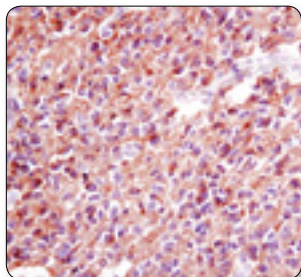
- XP** #4091 Phospho-Met (Tyr1234/1235) (D26) XP[®] Rabbit mAb (Sepharose Bead Conjugate)
- XP** #4033 Phospho-Met (Tyr1234/1235) (D26) XP[®] Rabbit mAb (Biotinylated)
- #3129 Phospho-Met (Tyr1234/1235) (3D7) Rabbit mAb
- #3126 Phospho-Met (Tyr1234/1235) Antibody
- #3133 Phospho-Met (Tyr1349) (130H2) Rabbit mAb
- #3121 Phospho-Met (Tyr1349) Antibody
- New XP** #8198 Met (D1C2) XP[®] Rabbit mAb
- New XP** #8494 Met (D1C2) XP[®] Rabbit mAb (Alexa Fluor[®] 488 Conjugate)
- XP** #8041 Met (D1C2) XP[®] Rabbit mAb (Biotinylated)
- #4560 Met Antibody
- #5631 Met (11C4) Mouse mAb (Flow Specific)
- #3127 Met (25H2) Mouse mAb
- #5086 Met (L41G3) Mouse mAb (Biotinylated)
- #3148 Met (L41G3) Mouse mAb
- #2440 Mig6 Antibody
- #2319 NCK1 (15B9) Rabbit mAb
- New** #8601 NHERF1 (D1C10) Rabbit mAb
- #3382 NHERF1 (A140) Antibody
- #3394 NHERF1 (A310) Antibody
- #3517 Phospho-NPM (Thr95) Antibody
- #3541 Phospho-NPM (Thr199) Antibody
- #3542 NPM Antibody
- #4015 Phospho-p130 Cas (Tyr165) Antibody
- #4014 Phospho-p130 Cas (Tyr249) Antibody
- #4011 Phospho-p130 Cas (Tyr410) Antibody
- #4300 PDAP1 Antibody
- #2992 Phospho-PDGF Receptor α (Tyr754) (23B2) Rabbit mAb
- #3170 Phospho-PDGF Receptor α (Tyr849)/PDGF Receptor β (Tyr857) (C43E9) Rabbit mAb
- #4547 Phospho-PDGF Receptor α (Tyr1018) Antibody
- XP** #5241 PDGF Receptor α (D13C6) XP[®] Rabbit mAb
- XP** #5278 PDGF Receptor α (D13C6) XP[®] Rabbit mAb (Biotinylated)
- XP** #3174 PDGF Receptor α (D1E1E) XP[®] Rabbit mAb
- #3164 PDGF Receptor α Antibody
- #3168 Phospho-PDGF Receptor β (Tyr740) (32A9) Rabbit mAb
- #4549 Phospho-PDGF Receptor β (Tyr751) (C63G6) Rabbit mAb
- #3161 Phospho-PDGF Receptor β (Tyr751) Antibody
- #3166 Phospho-PDGF Receptor β (Tyr751) (88H8) Mouse mAb
- #3173 Phospho-PDGF Receptor β (Tyr771) (76D6) Rabbit mAb

- #3124 Phospho-PDGF Receptor β (Tyr1009) (42F9) Rabbit mAb
- #2227 Phospho-PDGF Receptor β (Tyr1021) (6F10) Rabbit mAb
- #3169 PDGF Receptor β (28E1) Rabbit mAb
- #8044 PDGF Receptor β (28E1) Rabbit mAb (Biotinylated)
- #4564 PDGF Receptor β (C82A3) Rabbit mAb
- #3162 PDGF Receptor β Antibody
- #3175 PDGF Receptor β (2B3) Mouse mAb
- #3291 Phospho-Pyk2 (Tyr402) Antibody
- #3090 Pyk2 (H364) Antibody
- #3292 Pyk2 Antibody
- #3480 Pyk2 (5E2) Mouse mAb
- New** #8131 Phospho-PZR (Tyr241) (D6F9) Rabbit mAb
- New** #8088 Phospho-PZR (Tyr263) (D6A5) Rabbit mAb
- #5543 Phospho-PZR (Tyr263) Antibody
- New XP** #9893 PZR (D17B10) XP[®] Rabbit mAb
- #4157 PZR Antibody
- #3221 Phospho-Ret (Tyr905) Antibody
- #3223 Ret (C31B4) Rabbit mAb
- #3220 Ret Antibody
- #2654 Ron (C81H9) Rabbit mAb
- #4269 Ron (1B5) Mouse mAb
- #4102 ROR1 Antibody
- #4105 ROR2 Antibody
- #3078 Phospho-Ros (Tyr2274) Antibody
- #3266 Ros (69D6) Mouse mAb
- #2093 SCF (C19H6) Rabbit mAb
- #2273 SCF Antibody
- #2778 SH2D1A Antibody
- #2805 SH2D1A (XLP 1D12) Rat mAb
- #2434 Phospho-Shc (Tyr239/240) Antibody
- #2431 Phospho-Shc (Tyr317) Antibody
- #2432 Shc Antibody
- #4958 SLP-76 Antibody
- #5473 Phospho-Src (Ser17) Antibody
- #2113 Phospho-Src Family (Tyr416) (100F9) Rabbit mAb
- #6943 Phospho-Src Family (Tyr416) (D49G4) Rabbit mAb
- #2101 Phospho-Src Family (Tyr416) Antibody
- #2102 Non-phospho-Src (Tyr416) (7G9) Mouse mAb
- #2105 Phospho-Src (Tyr527) Antibody
- #2107 Non-phospho-Src (Tyr527) Antibody
- #2123 Src (32G6) Rabbit mAb
- New** #8077 Src (32G6) Rabbit mAb (Biotinylated)
- #2109 Src (36D10) Rabbit mAb
- New** #8048 Src (36D10) Rabbit mAb (Biotinylated)
- #2108 Src Antibody
- #2110 Src (L4A1) Mouse mAb

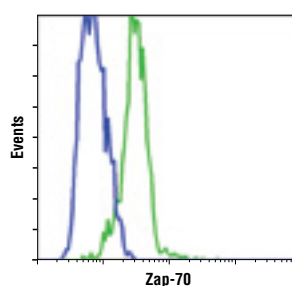
- #2715 Phospho-Syk (Tyr323) Antibody
- #2710 Phospho-Syk (Tyr525/526) (C87C1) Rabbit mAb
- #2711 Phospho-Syk (Tyr525/526) Antibody
- #2712 Syk Antibody
- #4987 Tec Antibody
- #3715 Pro-TGF- α Antibody
- #4221 Phospho-Tie2 (Tyr92) Antibody
- #4226 Phospho-Tie2 (Ser1119) Antibody
- New** #7403 Tie2 (D9D10) Rabbit mAb
- #4224 Tie2 (AB33) Mouse mAb
- #5638 Phospho-TNK1 (Tyr277) (D46E7) Rabbit mAb
- #4553 Phospho-TNK1 (Tyr277) Antibody
- #4570 TNK1 (C44F9) Rabbit mAb
- #9321 Phospho-Tyk2 (Tyr1054/1055) Antibody
- #9312 Tyk2 Antibody
- #5585 Tyro3 (D38C6) Rabbit mAb
- #9411 Phospho-Tyrosine Mouse mAb (P-Tyr-100)
- #5465 Phospho-Tyrosine Mouse mAb (P-Tyr-100) (HRP Conjugate)
- #9417 Phospho-Tyrosine Mouse mAb (P-Tyr-100) (Biotinylated)
- #9419 Phospho-Tyrosine Mouse mAb (P-Tyr-100) (Sepharose Bead Conjugate)
- New** #8095 Phospho-Tyrosine Mouse mAb (P-Tyr-100) (Magnetic Bead Conjugate)
- #9416 Phospho-Tyrosine Mouse mAb (P-Tyr-102)
- #8728 USP8 Antibody
- #2463 VEGF-B Antibody
- #2445 VEGF-C Antibody
- #2893 VEGF Receptor 1 Antibody
- #4991 Phospho-VEGF Receptor 2 (Tyr951) (15D2) Rabbit mAb
- #2471 Phospho-VEGF Receptor 2 (Tyr951) Antibody
- #2476 Phospho-VEGF Receptor 2 (Tyr951) (7H11) Mouse mAb
- #2474 Phospho-VEGF Receptor 2 (Tyr996) Antibody
- #3817 Phospho-VEGF Receptor 2 (Tyr1059) (D5A6) Rabbit mAb
- #2478 Phospho-VEGF Receptor 2 (Tyr1175) (19A10) Rabbit mAb
- #3770 Phospho-VEGF Receptor 2 (Tyr1175) (D5B11) Rabbit mAb
- #2477 Phospho-VEGF Receptor 2 (Tyr1212) (11A3) Rabbit mAb
- #2479 VEGF Receptor 2 (55B11) Rabbit mAb
- #5168 VEGF Receptor 2 (55B11) Rabbit mAb (Sepharose Bead Conjugate)
- #2472 VEGF Receptor 2 Antibody
- #3408 VEGF Receptor 3 (C82A2) Rabbit mAb
- #2638 VEGF Receptor 3 (C28G5) Rabbit mAb
- #2485 VEGF Receptor 3 Antibody
- #4911 Phospho-YAP (Ser127) Antibody
- New** #8418 YAP/TAZ (D24E4) Rabbit mAb
- #4912 YAP Antibody
- #2734 Yes Antibody
- #2717 Phospho-Zap-70 (Tyr319)/Syk (Tyr352) (65E4) Rabbit mAb
- #2701 Phospho-Zap-70 (Tyr319)/Syk (Tyr352) Antibody
- #2704 Phospho-Zap-70 (Tyr493) Antibody
- XP** #3165 Zap-70 (D1C10E) XP[®] Rabbit mAb
- XP** #9473 Zap-70 (D1C10E) XP[®] Rabbit mAb (Alexa Fluor[®] 488 Conjugate)
- #2705 Zap-70 (99F2) Rabbit mAb
- #2707 Zap-70 (136F12) Rabbit mAb (Alexa Fluor[®] 647 Conjugate)
- #2709 Zap-70 (L1E5) Mouse mAb



PZR (D17B10) XP[®] Rabbit mAb #9893: Confocal IF analysis of HUVE cells using #9893 (green). Blue pseudocolor = DRAQ5[®] #4084 (fluorescent DNA dye).



PDGF Receptor α (D13C6) XP[®] Rabbit mAb #5241: IHC analysis of paraffin-embedded human astrocytoma using #5241.



Zap-70 (D1C10E) XP[®] Rabbit mAb (Alexa Fluor[®] 488 Conjugate) #9473: Flow cytometric analysis of Ramos (blue) and Jurkat (green) cells using #9473.

USA Headquarters

Cell Signaling Technology, Inc.
Tel: 978-867-2300
E-mail: info@cellsignal.com
www.cellsignal.com

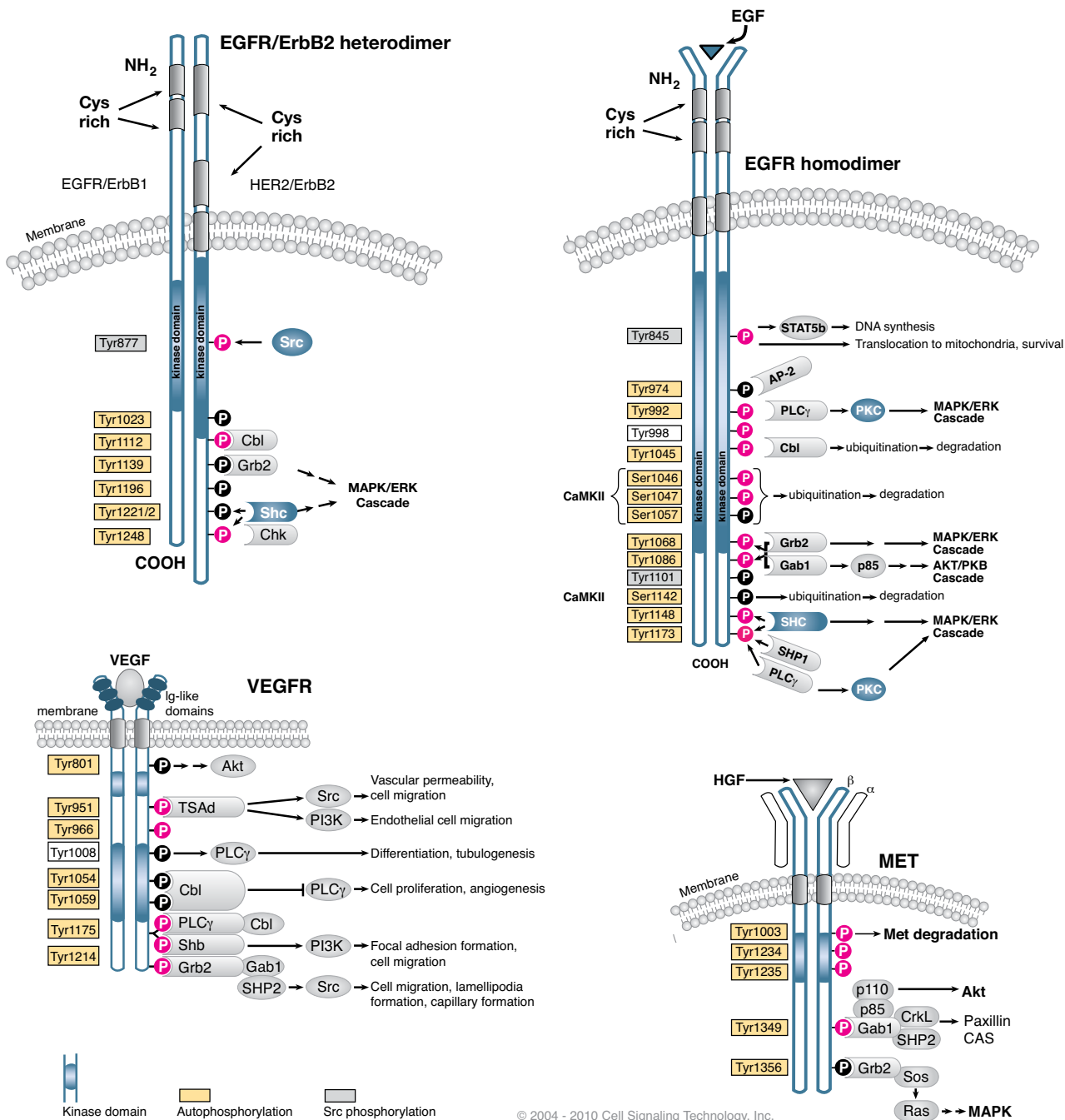
International Subsidiaries

Cell Signaling Technology (China) Limited
Tel: (86) 21-5835-6288
E-mail: info@cst-c.com.cn
www.cellsignal.com

Cell Signaling Technology Europe
Tel: +31 (0)71 568 1060
E-mail: info@cellsignal.eu
www.cellsignal.com

Cell Signaling Technology Japan, K.K.
Tel: 03-3295-16300
E-mail: info@cstj.co.jp
www.cstj.co.jp

Receptor Tyrosine Kinases



© 2004 - 2010 Cell Signaling Technology, Inc.