

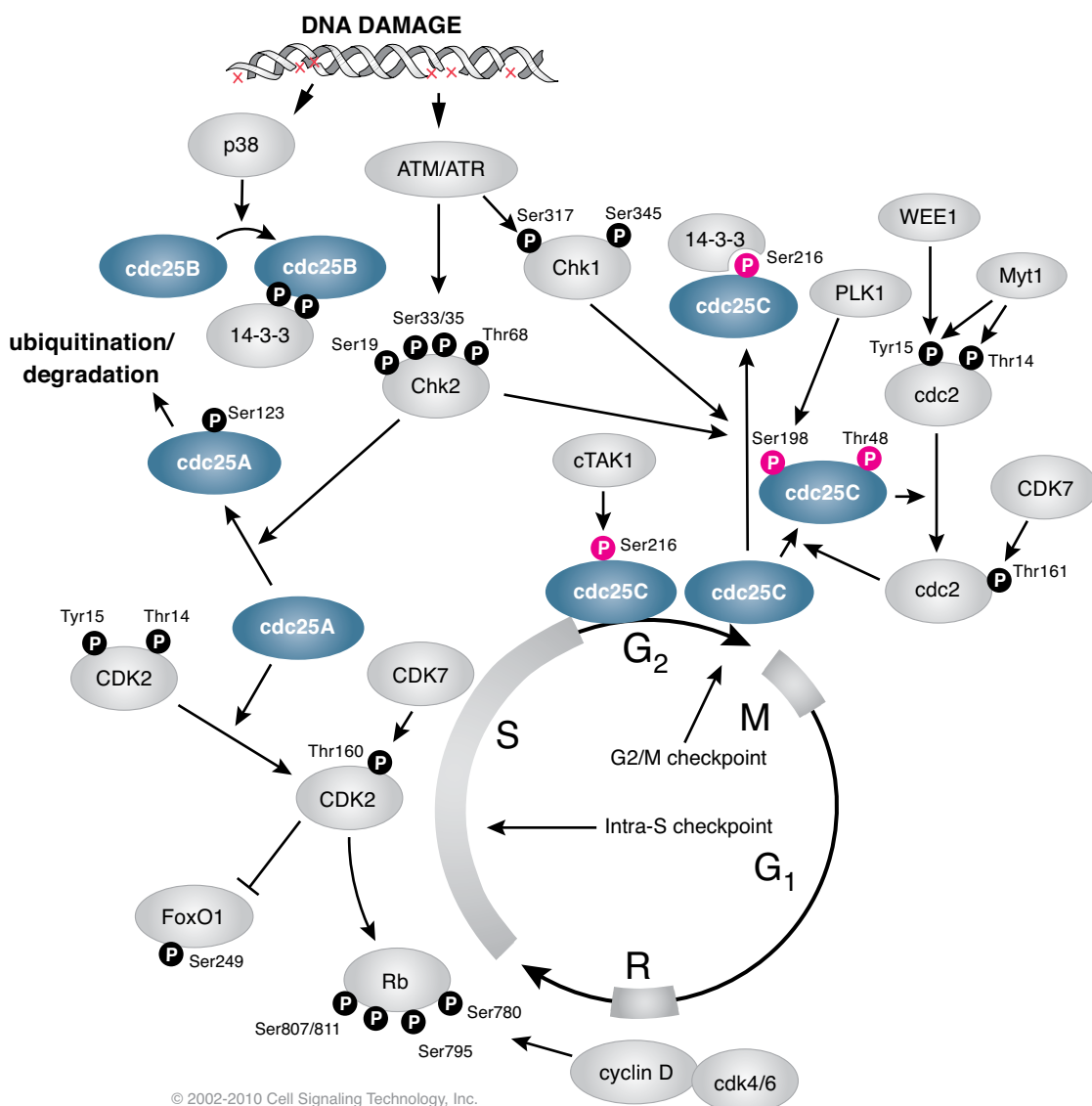
Antibodies and Related Reagents for Nuclear Receptors and Phosphatases

Product Pathways

- Motif Antibodies
- Chromatin Regulation
- MAP Kinase Signaling
- Apoptosis and Autophagy
- PI3K / Akt Signaling
- Cellular Metabolism
- Translational Control
- Development and Differentiation
- Stem Cell and Lineage Markers
- Ca²⁺, cAMP, and Lipid Signaling
- Cell Cycle/Checkpoint Control
- NF-κB Signaling
- Lymphocyte Signaling
- Neuroscience
- Tyrosine Kinases and Docking Proteins
- Angiogenesis
- > Nuclear Receptors and Phosphatases
- Cytoskeletal Signaling
- Adhesion
- Protein Folding and Stability

For Research Use Only.
Not For Use In
Diagnostic Procedures.

cdc25 Signaling



Nuclear Receptors

Antibody Sampler Kits

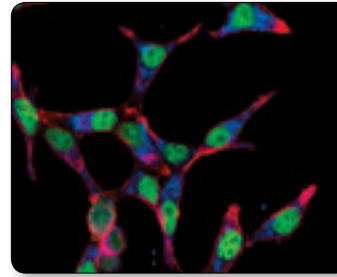
#9924 Phospho-Estrogen Receptor α Antibody Sampler Kit

Antibodies

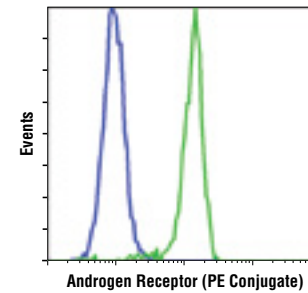
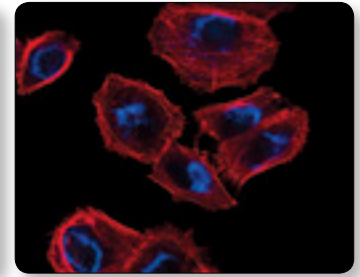
	Application	Reactivity
XP #5153 Androgen Receptor (D6F11) XP® Rabbit mAb	W, IHC-P, IF-IC, F	H
New XP #7395 Androgen Receptor (D6F11) XP® Rabbit mAb (Alexa Fluor® 488 Conjugate)	IF-IC, F	H
New XP #8428 Androgen Receptor (D6F11) XP® Rabbit mAb (PE Conjugate)	F	H
#3202 Androgen Receptor Antibody	W	H
#4842 Cox2 Antibody	W, IHC-P	H, M, (R)
#2517 Phospho-Estrogen Receptor α (Ser104/106) Antibody	W	H, (M)
#2511 Phospho-Estrogen Receptor α (Ser118) (16J4) Mouse mAb	W, IHC-P	H
#5587 Phospho-Estrogen Receptor α (Ser167) (D1A3) Rabbit mAb	W	H, (Mk)
#2512 Estrogen Receptor α (62A3) Mouse mAb	W	H
#5513 Estrogen Receptor β Antibody	W	H, M, R, Mk
#5417 GCNF Antibody	W	H, M, R
#4161 Phospho-Glucocorticoid Receptor (Ser211) Antibody	W, IP, IF-IC	H, (M)
#7437 Glucocorticoid Receptor Antibody	W, IP	H, R
#3113 HNF4 α (C11F12) Rabbit mAb	W, IHC-P, IF-IC	H
#3117 HNF4 α (G162) Antibody	W	H
#5948 NCoR1 Antibody	W	H, M, R, Mk
New #8633 NRBF-2 (D8G1) Rabbit mAb	W, IP	H, M, R, Mk, (Hm, B, Dg)
#8066 NRBF-2 Antibody	W, IP	H, M, R, Mk
#5095 Phospho-Nur77 (Ser351) (D22G5) Rabbit mAb	W	H, (M, R)
XP #3960 Nur77 (D63C5) XP® Rabbit mAb	W, IP, IF-IC, F	H, (Mk)
#2443 PPAR γ (81B8) Rabbit mAb	W, IP, IF-IC	H, M, (R)
#2435 PPAR γ (C26H12) Rabbit mAb	W, IHC-P, IF-IC	H, M, (R)
#2430 PPAR γ (D69) Antibody	W, IP	H, M, (R)
#3171 Phospho-Progesterone Receptor (Ser190) Antibody	W, IP	H
#3172 Progesterone Receptor (6A1) Mouse mAb	W, IP	H
#3153 Progesterone Receptor A/B (C89F7) Rabbit mAb	W, IHC-P	H
#3176 Progesterone Receptor A/B Antibody	W, IHC-P	H
#3157 Progesterone Receptor B (C1A2) Rabbit mAb	W, IHC-P, IF-IC, F	H
#3178 Progesterone Receptor B Antibody	W	H
#2554 RAR α Antibody	W	M, R
New XP #8965 RAR γ 1 (D3A4) XP® Rabbit mAb	W, IP, IHC-P, IF-IC	H, M, (R, Hm, B, Dg)
#2129 Phospho-Rev-erba (Ser55/59) Antibody	W	H, (M, R, B)
#5388 RXR α Antibody	W, IP	H, R, Mk
#8715 RXR β Antibody	W, IP	H, M, (R, Mk, B, Dg, Pg)
#5629 RXR γ Antibody	W, IP	H, M, (R, Mk, B, Dg)
#2191 SRC-1 (128E7) Rabbit mAb	W, IP, IHC-P	H, M, R, Mk
#2979 Phospho-SRC-3 (Thr24) Antibody	W, IF-IC	H
#2126 SRC-3 (5E11) Rabbit mAb	W, IP	H, M, R, Mk
#2115 SRC-3 (11B1) Mouse mAb	W, IF-IC, F	H
New #8795 STF-1 Antibody	W	H, M, (Mk, B, Pg)

Applications Key: W=Western Blot IP=Immunoprecipitation IHC=Immunohistochemistry F=Flow Cytometry IF=Immunofluorescence ChIP=Chromatin Immunoprecipitation (-IC Immunocytochemistry, -P Paraffin, -F Frozen)

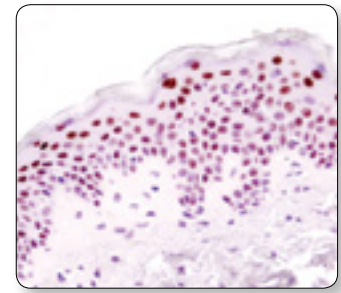
Reactivity Key: H=Human M=Mouse R=Rat Mk=Monkey Mi=Mink Pg=Pig C=Chicken Hm=Hamster B=Bovine Dm=D. melanogaster X=Xenopus Z=Zebrafish Dg=Dog Species enclosed in parentheses are predicted to react based on 100% sequence homology.



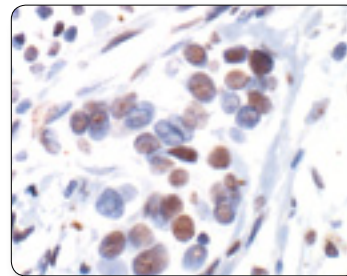
Androgen Receptor (D6F11) XP® Rabbit mAb (Alexa Fluor® 488 Conjugate) #7395: Confocal IF analysis of LNCaP (left) and DU 145 (right) cells using #7395 (green) and Hexokinase I (C35C4) Rabbit mAb (Alexa Fluor® 647 Conjugate) #3540 (blue pseudocolor). Actin filaments were labeled with DY-554 phalloidin (red).



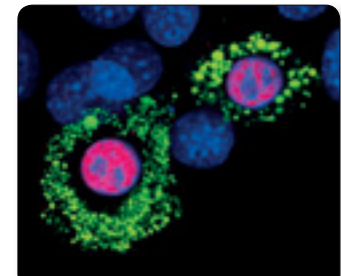
Androgen Receptor (D6F11) XP® Rabbit mAb (PE Conjugate) #8428: Flow cytometric analysis of Jurkat (blue) and LNCaP (green) cells using #8428.



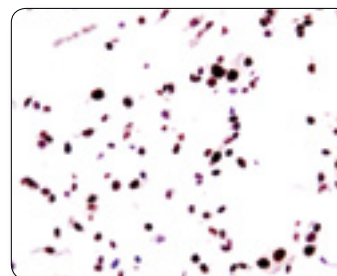
RAR γ 1 (D3A4) XP® Rabbit mAb #8965: IHC analysis of paraffin-embedded human skin using #8965.



Phospho-Estrogen Receptor α (Ser118) (16J4) Mouse mAb #2511: IHC analysis of paraffin-embedded human breast carcinoma showing nuclear localization, using #2511.



PPAR γ (C26H12) Rabbit mAb #2435: Confocal IF analysis of 3T3-L1 cells using #2435 (red) showing nuclear localization in differentiated cells. Lipid droplets were labeled with BODIPY 493/503 (green). Blue pseudocolor = DRAQ5® (fluorescent DNA dye).



Progesterone Receptor A/B (C89F7) Rabbit mAb #3153: IHC analysis of paraffin-embedded T47D cells (positive, left) and MDA-MB-231 cells (negative, right) using #3153.



Phosphatases

Antibody Sampler Kits

#9555 cdc25C Antibody Sampler Kit
#9780 PP2A Antibody Sampler Kit
#9793 SHP-2 Antibody Sampler Kit

Antibodies

	Application	Reactivity
#2614 Pan-Calcineurin A Antibody	W, IP, IF-IC, F	H, M, R, Mk, Dm, (C, X, B, Pg)
#3652 cdc25A Antibody	W	H, M
#9527 Phospho-cdc25C (Thr48) Antibody	W, IF-IC	H
#9529 Phospho-cdc25C (Ser198) Antibody	W, F	H
#4688 cdc25C (5H9) Rabbit mAb	W	H
#4686 Chronophin/PDXP (C85E3) Rabbit mAb	W	H, M, R, Hm, Mk, B
#5294 Phospho-CTDSPL2 (Ser104) Antibody	W, IP	H, Mk
#2857 Phospho-MKP1 (Ser359) (125E2) Rabbit mAb	W, IP	H
#3058 MKP3 Antibody	W	H, Mk
#3483 MKP5 Antibody	W	H, M, R
#4563 Phospho-MYPT1 (Thr853) Antibody	W	H, M, R, Hm, Mk, Dg
#2634 MYPT1 Antibody	W	H, M, R, Hm, Mk, (C, Z, B, Dg, Pg)
#2581 Phospho-PP1α (Thr320) Antibody	W, IHC-P	H, M, R, Mk
#2582 PP1α Antibody	W	H, M, R, Mk, Dm
#2041 PP2A A Subunit (81G5) Rabbit mAb	W, IHC-P, IF-IC	H, M, R, Mk
#2260 PP2A A Subunit (6G3) Rat mAb	W	H, M, R, Mk, (X, B)
#2039 PP2A A Subunit Antibody	W, IF-IC, F	H, M, R, Mk, Dm
#2290 PP2A B Subunit (100C1) Rabbit mAb	W, IP, IHC-P	H, M, R, Mk, Dm, (C, B, Pg)
#4953 PP2A B Subunit Antibody	W, IP, IHC-P, IF-IC, F	H, M, R, Mk, (C)
#2259 PP2A C Subunit (52F8) Rabbit mAb	W, IP, IHC-P, F	H, M, R, Mk, Dm, (C, Pg)
#2038 PP2A C Subunit Antibody	W, IP, IHC-P, IF-IC, F	H, M, R, Mk, Dm, (C, Pg)
XP #3549 PP2C-α (D18C10) XP [®] Rabbit mAb	W, IP, IHC-P, IF-IC, F	H, Mk
#2289 PP5 Antibody	W, F	H, M, R, Mk
#5686 PPP2R4 (5G3) Mouse mAb #5686	W	H, M, Mk
#5311 PTP1B Antibody	W	H
#8311 PTPN18 (D7B9) Rabbit mAb #8311	W, IP	H
#3330 PTPA/PPP2R4 Antibody	W	H, M, R, Mk
#9551 Phospho-PTEN (Ser380) Antibody	W, IP	H, M, R, (C)
#9549 Phospho-PTEN (Ser380/Thr382/383) (44A7) Rabbit mAb	W	H, M, R, Mk
#9554 Phospho-PTEN (Ser380/Thr382/383) Antibody	W, IP	H, M, R
#9569 Non-phospho PTEN (Ser380/Thr382/Thr383) Antibody	W, IP	M, R, (H)
XP #9188 PTEN (D4.3) XP [®] Rabbit mAb	W, IP, IHC-P	H, M, R, Mk, (C)
#9559 PTEN (138G6) Rabbit mAb	W, IP, IHC-P	H, M, R, Mk
#9556 PTEN (26H9) Mouse mAb	W, IP	H, M, R, Hm, Mk
#9552 PTEN Antibody	W, IP	H, M, R, Hm, Mk, (C)
#4481 Phospho-PTPa (Tyr789) Antibody	W, IP	H, M, R, Mk
#4485 PTPmu (BK2) Mouse mAb	W, IP	H, R, Mi, (M)
#4864 PTP-PEST (AG10) Mouse mAb	W, IP	H, M, R, Mk
#3941 Phospho-SHIP1 (Tyr1020) Antibody	W	H, M
#2725 SHIP1 (C15C9) Rabbit mAb	W, IP, F	H
#2727 SHIP1 (C40G9) Rabbit mAb	W, IP, IF-IC, F	H
#2728 SHIP1 (D1163) Antibody	W, IP	H, M, (R)
#2726 SHIP1 (P290) Antibody	W, IP, IF-IC, F	H
#2008 Phospho-SHIP2 (Tyr986/987) Antibody	W	H, (M, R)
XP #5445 Phospho-SHIP2 (Tyr1135) (D33C6) XP [®] Rabbit mAb	W, IP, F	H
#2007 Phospho-SHIP2 (Tyr1135) Antibody	W	H
#2839 SHIP2 (C76A7) Rabbit mAb	W, IP, IF-IC, F	H
#2730 SHIP2 Antibody	W	H
#3759 SHP-1 (C14H6) Rabbit mAb	W	H, M, (R)

	Application	Reactivity
#3751 Phospho-SHP-2 (Tyr542) Antibody	W, IP	H, M, R, (Mk, C, X)
#5431 Phospho-SHP-2 (Tyr580) (D66F10) Rabbit mAb	W, IP, F	M, R, (H)
#3703 Phospho-SHP-2 (Tyr580) Antibody	W, IP	H, M, R, (C)
#3397 SHP-2 (D50F2) Rabbit mAb	W, IP	H, M, R, Mk
#3752 SHP-2 Antibody	W	H, M, R
XP #5659 Non-phospho-STEP (Ser221) (D74H3) XP [®] Rabbit mAb	W, IP, IF-F	H, M, R
New #9017 STEP (D7E2) Rabbit mAb	W, IP	H, R
New #9069 STEP (D9H3) Rabbit mAb	W, IP	H, M, R
#4396 STEP (23E5) Mouse mAb	W, IP, IF-F	M, R
#4817 STEP Antibody	W, IP	M, R, (H)
#4752 VHR Antibody	W, IP	H, M, R, Mk

PathScan[®] Sandwich ELISA

#7285 PathScan [®] Phospho-PTEN (Ser380) Sandwich ELISA Kit	ELISA	H, M, Mk
--	-------	----------

SignalSilence[®] siRNA

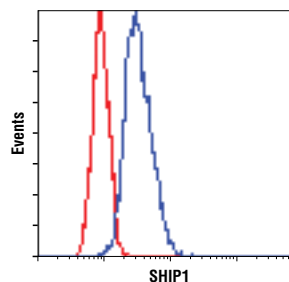
#6448 SignalSilence [®] NRBF-2 siRNA I		H
#6251 SignalSilence [®] PTEN siRNA I		H, (M, R)
#6348 SignalSilence [®] RXRa siRNA I		H

Controls

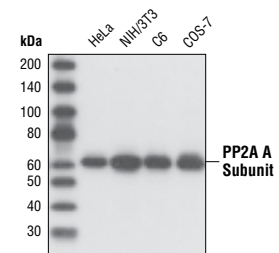
#1190 Phospho-cdc25C (Ser216) Blocking Peptide
#1054 PP2A A Subunit Blocking Peptide
#1051 PP2A B Subunit Blocking Peptide
#1067 PP2A C Subunit Blocking Peptide
#1250 PTEN Blocking Peptide
#8106 SignalSlide [®] PTEN IHC Controls
#1433 SRC-1 Blocking Peptide

Chemical Modulators

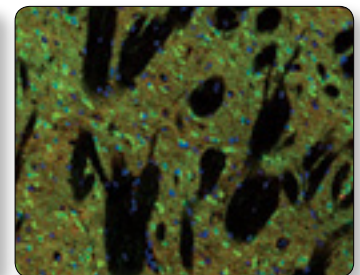
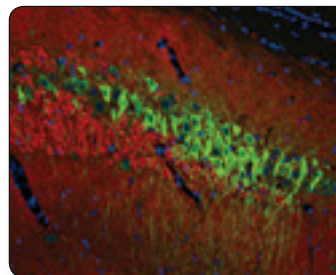
#9902 Calyculin A (Serine/Threonine Phosphatase Inhibitor)
--



SHIP1 (C15C9) Rabbit mAb #2725: Flow cytometric analysis of Jurkat (red) and RL (blue) cells using #2725.



PP2A A Subunit (81G5) Rabbit mAb #2041: Western blot analysis of extracts from various cell lines using #2041.



Non-phospho-STEP (Ser221) (D74H3) XP[®] Rabbit mAb #5659: Confocal IF analysis of rat hippocampus (left) and striatum (right) using #5659 (green) and α/β-Synuclein (Syn205) Mouse mAb #2644 (red). Blue pseudocolor = DRAQ5[®] #4084 (fluorescent DNA dye).

USA Headquarters

Cell Signaling Technology, Inc.
Tel: 978-867-2300
E-mail: info@cellsignal.com
www.cellsignal.com

International Subsidiaries

Cell Signaling Technology (China) Limited
Tel: (86) 21-5835-6288
E-mail: info@cst-c.com.cn
www.cellsignal.com

Cell Signaling Technology Europe
Tel: +31 (0)71 568 1060
E-mail: info@cellsignal.eu
www.cellsignal.com

Cell Signaling Technology Japan, K.K.
Tel: 03-3295-16300
E-mail: info@cstj.co.jp
www.cstj.co.jp

Supporting Products

Antibody Sampler Kits

- #9962 Epitope Tag Antibody Sampler Kit
- #5142 Loading Control Antibody Sampler Kit
- #4670 Loading Control Antibody Sampler Kit (HRP Conjugate)

Secondary Antibodies and Detection Reagents

- #7071 Phototope®-HRP Western Blot Detection System, Anti-rabbit IgG, HRP-linked Antibody
- #7072 Phototope®-HRP Western Blot Detection System, Anti-mouse IgG, HRP-linked Antibody
- #4929 Albumin Antibody
- #5597 Anti-biotin (D5A7) Rabbit mAb
- #5571 Anti-biotin (D5A7) Rabbit mAb (HRP Conjugate)
- #7055 Anti-biotin, AP-linked Antibody
- #7075 Anti-biotin, HRP-linked Antibody
- New** #9863 Protein A Agarose Beads
- New** #8687 Protein A Magnetic Beads
- New** #8740 Protein G Magnetic Beads
- #7054 Anti-rabbit IgG, AP-linked Antibody
- #7074 Anti-rabbit IgG, HRP-linked Antibody
- #4412 Anti-rabbit IgG (H+L), F(ab)² Fragment (Alexa Fluor® 488 Conjugate)
- #4413 Anti-rabbit IgG (H+L), F(ab)² Fragment (Alexa Fluor® 555 Conjugate)
- #4414 Anti-rabbit IgG (H+L), F(ab)² Fragment (Alexa Fluor® 647 Conjugate)
- #6990 Anti-rabbit IgG F(ab)² Fragment (Sephacryl Bead Conjugate)
- #5366 Anti-rabbit IgG (H+L) (DyLight® 680 Conjugate)
- #5151 Anti-rabbit IgG (H+L) (DyLight® 800 Conjugate)
- #3678 Mouse Anti-rabbit IgG (Conformation Specific) (L27A9) mAb
- New** #5127 Mouse Anti-rabbit IgG (Conformation Specific) (L27A9) mAb (HRP Conjugate)
- #3677 Mouse Anti-rabbit IgG (Light-Chain Specific) (L57A3) mAb
- #7056 Anti-mouse IgG, AP-linked Antibody
- #7076 Anti-mouse IgG, HRP-linked Antibody
- #4408 Anti-mouse IgG (H+L), F(ab)² Fragment (Alexa Fluor® 488 Conjugate)
- #4409 Anti-mouse IgG (H+L), F(ab)² Fragment (Alexa Fluor® 555 Conjugate)
- #4410 Anti-mouse IgG (H+L), F(ab)² Fragment (Alexa Fluor® 647 Conjugate)
- #5946 Anti-mouse IgG (H+L), F(ab)² Fragment (Sephacryl Bead Conjugate)
- #5470 Anti-mouse IgG (H+L) (DyLight® 680 Conjugate)
- #5257 Anti-mouse IgG (H+L) (DyLight® 800 Conjugate)
- #7077 Anti-rat IgG, HRP-linked Antibody
- #4416 Anti-rat IgG (H+L), (Alexa Fluor® 488 Conjugate)
- #4417 Anti-rat IgG (H+L), (Alexa Fluor® 555 Conjugate)
- #4418 Anti-rat IgG (H+L), (Alexa Fluor® 647 Conjugate)
- #8125 SignalStain® Boost IHC Detection Reagent (HRP, Mouse)
- #8114 SignalStain® Boost IHC Detection Reagent (HRP, Rabbit)
- #8112 SignalStain® Antibody Diluent
- #3419 Streptavidin (Sephacryl Bead Conjugate)
- #3999 Streptavidin-HRP

Buffers and Related Products

- #7003 20X LumiGLO® Reagent and 20X Peroxide
- #9998 BSA
- #9803 Cell Lysis Buffer (10X)
- #9852 Chaps Cell Extract Buffer (10X)
- New** #9871 20 mM Citrate pH 3.0 (Sterile)
- #4083 DAPI
- #4084 DRAQ5®
- New** #7406 DRAQ7™
- #4082 Hoechst #33342
- #5425 Normal Goat Serum
- #9999 Nonfat Dry Milk
- #7722 Blue Loading Buffer Pack
- #7723 Red Loading Buffer Pack
- New** #9872 Phosphate Buffered Saline (PBS-1X) pH7.2 (Sterile)
- #9808 Phosphate Buffered Saline (PBS-20X)
- #9809 Phosphate Buffered Saline with Tween 20 (PBST-20X)
- #5870 Phosphatase Inhibitor Cocktail (100X)
- #5871 Protease Inhibitor Cocktail (100X)
- #5872 Protease/Phosphatase Inhibitor Cocktail (100X)
- #7727 Biotinylated Protein Ladder Detection Pack
- #7720 Prestained Protein Marker, Broad Range (Premixed Format)
- #4087 Propidium Iodide (PI)/RNase Staining Solution
- #9806 RIPA Buffer (10X)
- #6883 SignalFire™ ECL Reagent
- #7002 STOP Solution
- #7004 TMB Substrate
- #4050 Tris-Glycine SDS Running Buffer (10X)
- #9997 Tris Buffered Saline with Tween 20 (TBST-10X)

Isotype Controls

- XP** #3900 Rabbit (DA1E) mAb IgG XP® Isotype Control
- XP** #2975 Rabbit (DA1E) mAb IgG XP® Isotype Control (Alexa Fluor® 488 Conjugate)
- New** #3969 Rabbit (DA1E) mAb IgG XP® Isotype Control (Alexa Fluor® 555 Conjugate)
- XP** #2985 Rabbit (DA1E) mAb IgG XP® Isotype Control (Alexa Fluor® 647 Conjugate)
- XP** #4096 Rabbit (DA1E) mAb IgG XP® Isotype Control (Biotinylated)
- XP** #3423 Rabbit (DA1E) mAb IgG XP® Isotype Control (Sephacryl Bead Conjugate)
- XP** #8726 Rabbit (DA1E) mAb IgG XP® Isotype Control (Magnetic Bead Conjugate)
- XP** #5742 Rabbit (DA1E) mAb IgG XP® Isotype Control (PE Conjugate)
- #7229 Normal Rabbit IgG
- #4340 Rabbit IgG Isotype Control (Alexa Fluor® 488 Conjugate)
- #3452 Rabbit IgG Isotype Control (Alexa Fluor® 647 Conjugate)
- #3420 Mouse IgG (Sephacryl Bead Conjugate)
- #5873 Mouse IgG (Magnetic Bead Conjugate)
- #5415 Mouse (G3A1) mAb IgG1 Isotype Control
- New** #9641 Mouse (G3A1) mAb IgG1 Isotype Control (Alexa Fluor® 555 Conjugate)
- #6899 Mouse (G3A1) mAb IgG1 Isotype Control (PE Conjugate)
- #4878 Mouse (MOPC-21) mAb IgG1 Isotype Control (Alexa Fluor® 488 Conjugate)
- #4843 Mouse (MOPC-21) mAb IgG1 Isotype Control (Alexa Fluor® 647 Conjugate)
- #4097 Mouse (MOPC-21) mAb IgG1 Isotype Control (Biotinylated)

Epitope Tag Antibodies

- New** #8146 DYKDDDDK Tag (9A3) Mouse mAb (Binds to same epitope as Sigma's Anti-FLAG® M2 Antibody)
- #2368 DYKDDDDK Tag Antibody (Binds to same epitope as Sigma's Anti-FLAG® M2 Antibody)
- #2044 DYKDDDDK Tag Antibody (Binds to same epitope as Sigma's Anti-FLAG® M2 Antibody) (HRP Conjugate)
- #5407 DYKDDDDK Tag Antibody (Binds to same epitope as Sigma's Anti-FLAG® M2 Antibody) (Alexa Fluor® 488 Conjugate)
- #3768 DYKDDDDK Tag Antibody (Binds to same epitope as Sigma's Anti-FLAG® M2 Antibody) (Alexa Fluor® 555 Conjugate)
- New** #9696 DYKDDDDK Tag Antibody (Binds to same epitope as Sigma's Anti-FLAG® M2 Antibody) (Alexa Fluor® 594 Conjugate)
- #2908 DYKDDDDK Tag Antibody (Binds to same epitope as Sigma's Anti-FLAG® M2 Antibody) (Biotinylated)
- #2372 β-Gal (14B7) Mouse mAb
- XP** #2956 GFP (D5.1) XP® Rabbit mAb
- XP** #2912 GFP (D5.1) XP® Rabbit mAb (Biotinylated)
- XP** #2037 GFP (D5.1) XP® Rabbit mAb (HRP Conjugate)
- #2555 GFP Antibody
- #2955 GFP (4B10) Mouse mAb
- #9325 GSK-3β-Tag Antibody
- #2625 GST (91G1) Rabbit mAb
- #5746 GST (91G1) Rabbit mAb (Biotinylated)
- #5475 GST (91G1) Rabbit mAb (HRP Conjugate)
- #2624 GST (26H1) Mouse mAb
- #3368 GST (26H1) Mouse mAb (Alexa Fluor® 488 Conjugate)
- #3720 GST (26H1) Mouse mAb (Alexa Fluor® 555 Conjugate)
- #3445 GST (26H1) Mouse mAb (Alexa Fluor® 647 Conjugate)
- #3513 GST (26H1) Mouse mAb (Sephacryl Bead Conjugate)
- #2622 GST Antibody
- #2448 Glu-Glu Tag Antibody
- #3724 HA-Tag (C29F4) Rabbit mAb
- #3956 HA-Tag (C29F4) Rabbit mAb (Sephacryl Bead Conjugate)
- #5017 HA-Tag (C29F4) Rabbit mAb (Biotinylated)
- #2367 HA-Tag (6E2) Mouse mAb
- #2350 HA-Tag (6E2) Mouse mAb (Alexa Fluor® 488 Conjugate)
- #3444 HA-Tag (6E2) Mouse mAb (Alexa Fluor® 647 Conjugate)
- #2999 HA-Tag (6E2) Mouse mAb (HRP Conjugate)
- #2365 His-Tag Antibody
- #2366 His-Tag (27E8) Mouse mAb
- #4079 His-Tag (27E8) Mouse mAb (Sephacryl Bead Conjugate)
- #2396 MBP (8G1) Mouse mAb
- #2278 Myc-Tag (71D10) Rabbit mAb
- #3946 Myc-Tag (71D10) Rabbit mAb (Biotinylated)
- #2272 Myc-Tag Antibody
- #2276 Myc-Tag (9B11) Mouse mAb
- #2279 Myc-Tag (9B11) Mouse mAb (Alexa Fluor® 488 Conjugate)
- #3756 Myc-Tag (9B11) Mouse mAb (Alexa Fluor® 555 Conjugate)
- New** #9483 Myc-Tag (9B11) Mouse mAb (Alexa Fluor® 594 Conjugate)
- #2233 Myc-Tag (9B11) Mouse mAb (Alexa Fluor® 647 Conjugate)
- #2400 Myc-Tag (9B11) Mouse mAb (HRP Conjugate)
- #3400 Myc-Tag (9B11) Mouse mAb (Sephacryl Bead Conjugate)
- #5698 Myc-Tag (9B11) Mouse mAb (Magnetic Bead Conjugate)
- New** #3739 Myc-Tag (9B11) Mouse mAb (PE Conjugate)
- New** #8476 S-Tag Antibody
- #2547 Tat (8C2) Mouse mAb