

Antibodies and Related Reagents for Neuroscience

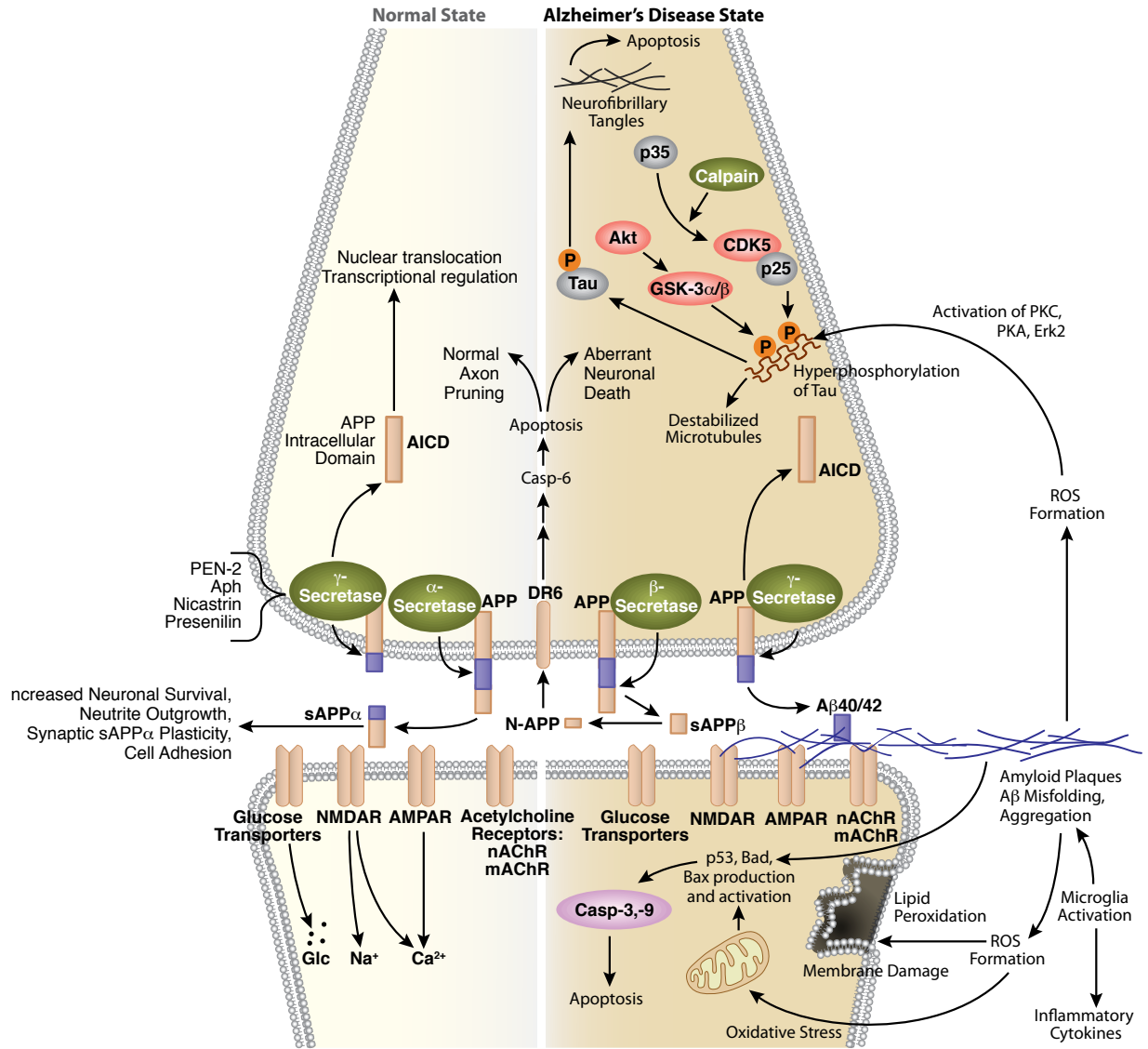
Product Pathways

- Motif Antibodies
- Chromatin Regulation
- MAP Kinase Signaling
- Apoptosis and Autophagy
- PI3K / Akt Signaling
- Cellular Metabolism
- Translational Control
- Development and Differentiation
- Stem Cell and Lineage Markers
- Ca²⁺, cAMP, and Lipid Signaling
- Cell Cycle/Checkpoint Control
- NF-κB Signaling
- Lymphocyte Signaling

> Neuroscience

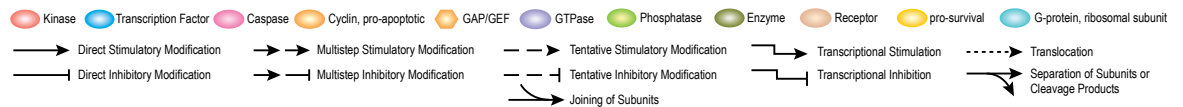
- Tyrosine Kinases and Docking Proteins
- Angiogenesis
- Nuclear Receptors and Phosphatases
- Cytoskeletal Signaling
- Adhesion
- Protein Folding and Stability

Amyloid Plaque and Neurofibrillary Tangle Formation in Alzheimer's Disease

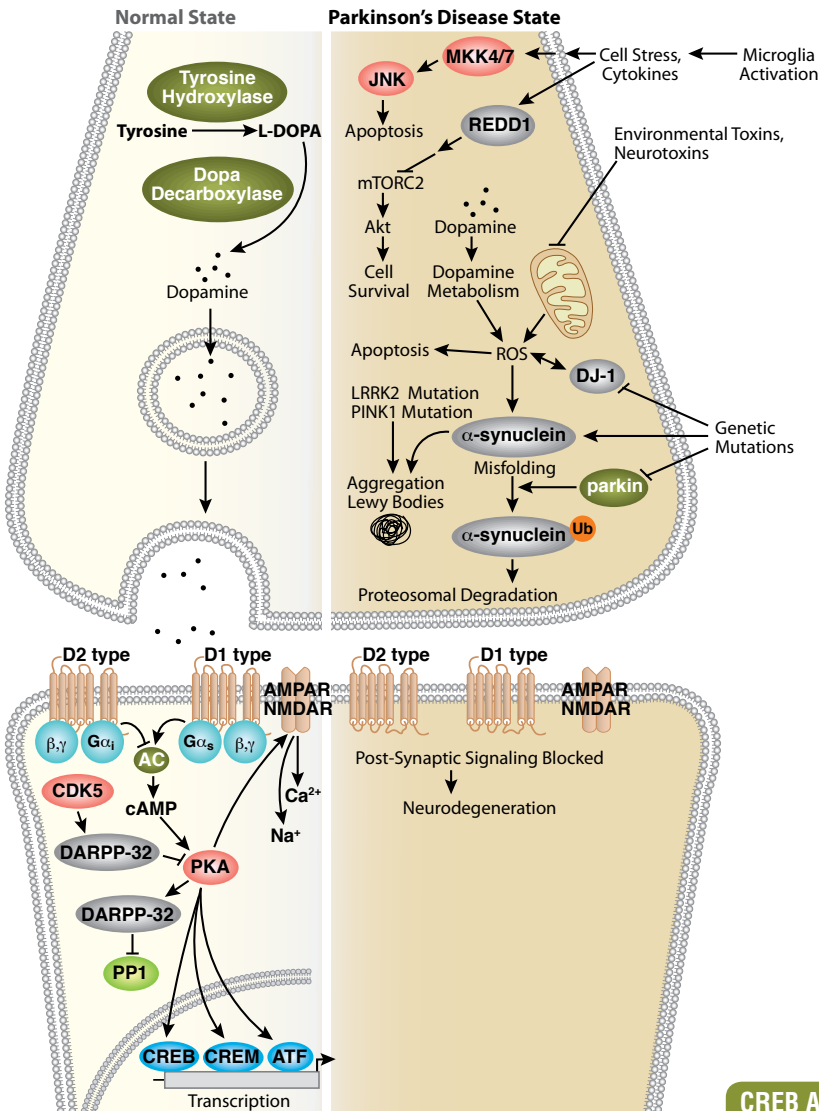


© 2009 – 2010 Cell Signaling Technology, Inc.

For Research Use Only.
Not For Use In
Diagnostic Procedures.



Dopamine Signaling in Parkinson's Disease



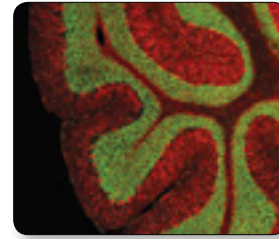
© 2009 – 2010 Cell Signaling Technology, Inc.

Trk Antibody Comparison

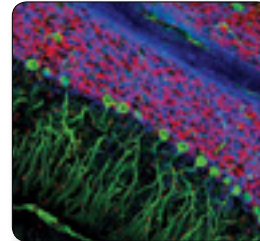
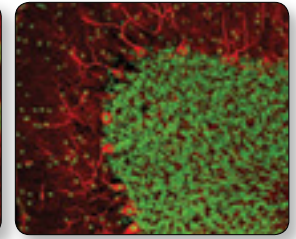
		WB	IP	IHC	Flow	IF
#9141 Phospho-TrkA (Tyr490) Antibody	R, (H, M)	+++	++	-	N/T	-
#4619 Phospho-TrkA (Tyr490)/TrkB (Tyr516) (C35G9) Rabbit mAb	H, R, (M)	+++	++	-	-	-
#4621 Phospho-TrkA (Tyr674/675)/TrkB (Tyr706/707) (C50F3) Rabbit mAb	H, R, (M)	++++	++	-	-	-
#4609 Trk (pan) (C17F1) Rabbit mAb	H, M, R	++++	+++	-	+++	+++
#2508 TrkA (14G6) Rabbit mAb	H	++++	-	++++	-	-
#2505 TrkA Antibody	H, M, R	+++	-	-	-	-
#4603 TrkB (80E3) Rabbit mAb	H, M, R	++++	-	-	N/T	N/T
#4607 TrkB (80G2) Rabbit mAb	H, (M, R)	-	N/T	++++	+++	-
#4606 TrkB Antibody	H	++	-	-	-	-
#3376 TrkC (C44H5) Rabbit mAb	H, M, R	++++	+++	N/T	-	+++

Testing Key:

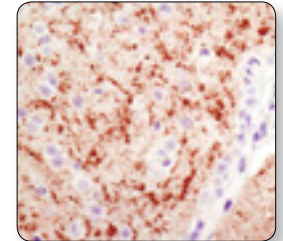
++++ Very Highly Recommended / +++ Highly Recommended / ++ Recommended / - Not Recommended / N/T Not Tested / N/A Not Applicable



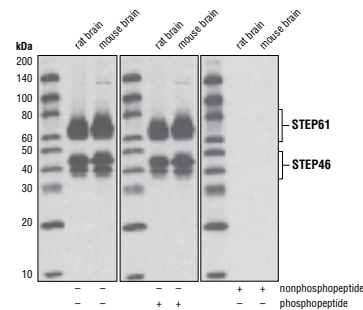
CREB (D76D11) Rabbit mAb #4820: Confocal IF analysis of mouse brain using #4820 (green) and β -Tubulin (TU-20) Mouse mAb #4466 (red).



CNPase (D83E10) XP® Rabbit mAb (Alexa Fluor® 647 Conjugate) #5716: Confocal IF analysis of rat cerebellum using #5716 (blue pseudocolor) and β -Tubulin (TU-20) Mouse mAb #4466 (green). Red = Propidium iodide (fluorescent DNA dye).



α -Synuclein (D37A6) XP® Rabbit mAb #4179: IHC analysis of paraffin-embedded mouse brain using #4179.



Non-phospho-STEP (Ser221) (D74H3) XP® Rabbit mAb #5659:

Western blot analysis of extracts from rat brain and mouse brain using #5659. The nonphospho-specificity of the antibody was verified by preincubating the antibody without peptide, with STEP61 (Ser221) non-phosphopeptide, or with STEP61 (Ser221) phosphopeptide prior to incubation with the membrane.

CREB Antibody Comparison

		WB	IP	IHC	Flow	IF	ChIP
#4276 Phospho-CREB (Ser133) (D1G6) Rabbit mAb	H, M, R	+++	+++	-	-	N/T	+++
#9198 Phospho-CREB (Ser133) (87G3) Rabbit mAb	H, M, R	+++	-	+++	+++	+++	+++
#9187 Phospho-CREB (Ser133) (87G3) Rabbit mAb (Alexa Fluor® 488 Conjugate)	H, M, R	N/A	N/A	N/A	+++	+++	N/A
#4095 Phospho-CREB (Ser133) (87G3) Rabbit mAb (Biotinylated)	H, M, R	+++	N/T	N/A	N/T	N/T	N/A
#9191 Phospho-CREB (Ser133) Antibody	H, M, R	++	++	-	-	-	-
#9196 Phospho-CREB (Ser133) (1B6) Mouse mAb	H, M, R	++	N/T	N/T	N/T	N/T	-
#4820 CREB (D76D11) Rabbit mAb	H, M, R, Mk, Hm, Dm	+++	+++	-	+++	+++	+++
#9197 CREB (48H2) Rabbit mAb	H, M, R, Mk, Dm	++++	++++	++++	++++	++++	+++
#3955 CREB (48H2) Rabbit mAb (Sepharose Bead Conjugate)	H, M, R, Mk	N/A	+++	N/A	N/A	N/A	N/A
#4034 CREB (48H2) Rabbit mAb (Biotinylated)	H, M, R, Mk, Dm	++++	N/T	N/A	N/T	N/T	N/A
#9104 CREB (86B10) Mouse mAb	H, M, R, Mk	+++	-	-	+++	-	-

Antibody Sampler Kits

- #9784 Alzheimer Disease Antibody Sampler Kit
- #9369 GSK-3 Antibody Sampler Kit
- #9781 Neurofilament Antibody Sampler Kit
- #3640 Notch Isoform Antibody Sampler Kit
- #5887 γ Secretase Antibody Sampler Kit
- #4638 TrkA and TrkB Antibody Sampler Kit

PhosphoPlus® Antibody Duets

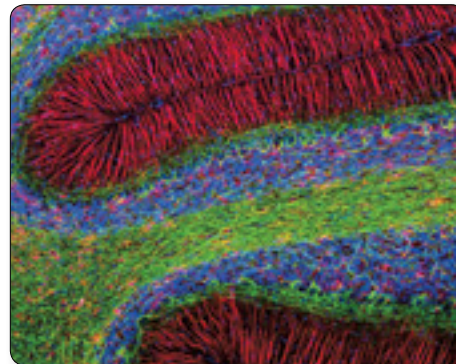
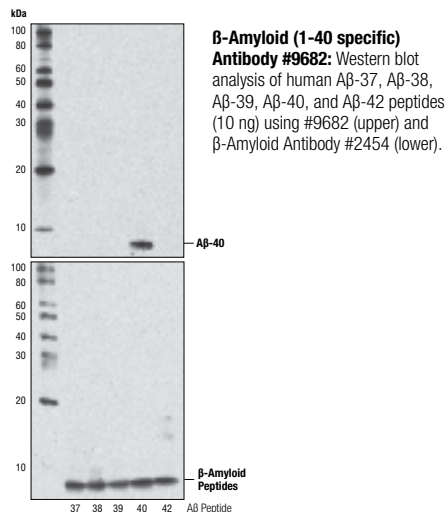
- #8212 PhosphoPlus® CREB (Ser133) Antibody Duet
- #8213 PhosphoPlus® GSK-3 β (Ser9) Antibody Duet

Antibodies

- New** #8513 β 2-Adrenergic Receptor (D6H2) Rabbit mAb
- #8084 Phospho-AMPA Receptor (GluR 1) (Ser845) (D10G5) Rabbit mAb
- #3921 Phospho-AMPA Receptor (GluR 2) (Tyr869/Tyr873/Tyr876) Antibody
- #4027 Phospho-AMPA Receptor (GluR 2) (Tyr876) Antibody
- New** #8850 AMPA Receptor (GluR 1) Antibody
- #5306 AMPA Receptor (GluR 2) (D39F2) Rabbit mAb
- #2460 AMPA Receptor (GluR 2/3/4) Antibody
- #5117 AMPA Receptor (GluR 3) (D25G9) Rabbit mAb
- #4676 AMPA Receptor (GluR 3) (D47E3) Rabbit mAb
- #3437 AMPA Receptor (GluR 3) Antibody
- XP** #8070 AMPA Receptor (GluR 4) (D41A11) XP® Rabbit mAb
- #8010 AMPA Receptor (GluR 4) (D19G9) Rabbit mAb
- #3824 AMPA Receptor (GluR 4) (Ala60) Antibody
- #3825 AMPA Receptor (GluR 4) (Arg860) Antibody
- New** #8593 APBA2 Antibody
- #6986 Phospho-APP (Thr668) (D90B8) Rabbit mAb
- #3823 Phospho-APP (Thr668) Antibody
- #2450 APP/ β -Amyloid (NAB228) Mouse mAb
- #2452 APP Antibody
- New** #9682 β -Amyloid (1-40 specific) Antibody
- New** #7672 β -Amyloid (1-42 specific) Antibody
- #2454 β -Amyloid Antibody
- #3276 APPL1 Antibody
- #2177 Ataxin-1 Antibody
- #5606 BACE (D10E5) Rabbit mAb
- #6897 Bassoon (D63B6) Rabbit mAb
- New** #8773 Brn2/POU3F2 Antibody

- #5935 BRSK1 (D10F2) Rabbit mAb
- #5460 BRSK2 (D29B6) Rabbit mAb
- #2173 Calbindin (C26D12) Rabbit mAb
- #4830 Calmodulin Antibody
- #2556 Calpain 1 Large Subunit (Mu-type) Antibody
- #2539 Calpain 2 Large Subunit (M-type) Antibody
- #4146 Calpastatin Antibody
- #3356 Phospho-CaMKII (Tyr231) Antibody
- #3361 Phospho-CaMKII (Thr286) Antibody
- #3365 CaMKI- δ Antibody
- #4436 CaMKII (pan) (D11A10) Rabbit mAb
- #3362 CaMKII (pan) Antibody
- #3357 CaMKII- α Antibody
- #4032 CaMKIV Antibody
- #8096 CASK (D14E3) Rabbit mAb
- #8968 CASK (D24B12) Rabbit mAb
- #9497 CASK (D38F6) Rabbit mAb
- #2878 CASK Antibody
- #3731 Caspr2 Antibody
- New** #8038 Phospho-CDC20 (Ser51) Antibody
- #4823 CDC20 Antibody
- #2506 CDK5 Antibody
- #9894 CEND1 Antibody
- #4728 β 2-Chimerin (2E3) Rat mAb
- XP** #5664 CNPase (D83E10) XP® Rabbit mAb
- XP** #5714 CNPase (D83E10) XP® Rabbit mAb (Alexa Fluor® 488 Conjugate)
- XP** #5715 CNPase (D83E10) XP® Rabbit mAb (Alexa Fluor® 555 Conjugate)
- XP** #5716 CNPase (D83E10) XP® Rabbit mAb (Alexa Fluor® 647 Conjugate)
- #2986 CNPase Antibody
- #4841 Cox1 Antibody
- #4842 Cox2 Antibody
- #4276 Phospho-CREB (Ser133) (D1G6) Rabbit mAb
- #9198 Phospho-CREB (Ser133) (87G3) Rabbit mAb
- #9187 Phospho-CREB (Ser133) (87G3) Rabbit mAb (Alexa Fluor® 488 Conjugate)
- #4095 Phospho-CREB (Ser133) (87G3) Rabbit mAb (Biotinylated)
- #9196 Phospho-CREB (Ser133) (1B6) Mouse mAb
- #9191 Phospho-CREB (Ser133) Antibody
- #4820 CREB (D76D11) Rabbit mAb
- #9197 CREB (48H2) Rabbit mAb
- #4034 CREB (48H2) Rabbit mAb (Biotinylated)

- #3955 CREB (48H2) Rabbit mAb (Sepharose Bead Conjugate)
- #9104 CREB (86B10) Mouse mAb
- #9190 PhosphoPlus® CREB (Ser133) Antibody Kit
- #9397 Phospho-CRMP-2 (Thr514) Antibody
- #9393 CRMP-2 Antibody
- #3327 Phospho-Dab1 (Tyr220) Antibody
- #3325 Phospho-Dab1 (Tyr232) Antibody
- #3328 Dab1 Antibody
- #5393 Phospho-DARPP-32 (Thr34) (D29E8) Rabbit mAb
- #2301 Phospho-DARPP-32 (Thr75) Antibody
- #2306 DARPP-32 (19A3) Rabbit mAb
- #2302 DARPP-32 Antibody
- #4804 DCBLD2 Antibody
- #9890 Delta FosB Antibody
- #4229 Dexas1 Antibody
- #5560 DJ-1 (D21E11) Rabbit mAb
- #2134 DJ-1 Antibody
- #5556 DLST Antibody
- #8586 Dopamine β -Hydroxylase (DBH) Antibody
- #4605 Phospho-Doublecortin (Ser297) Antibody
- #3453 Phospho-Doublecortin (Ser334) Antibody
- #4604 Doublecortin Antibody
- #2771 DYRK1A Antibody
- #5672 DYRK1B (D40D1) Rabbit mAb
- #2703 DYRK1B Antibody
- #4611 Dysbindin Antibody
- XP** #5684 EAAT1 (D44E2) XP® Rabbit mAb
- #5685 EAAT1 (D20D5) Rabbit mAb
- #4166 EAAT1 Antibody
- #3838 EAAT2 Antibody
- #4153 EGR1 (15F7) Rabbit mAb
- #4154 EGR1 (44D5) Rabbit mAb
- #9536 Enolase-2 Antibody
- #3371 Phospho-Erk5 (Thr218/Tyr220) Antibody
- #3372 Erk5 Antibody
- #9597 FABP7 Antibody
- #2877 FE65 Antibody
- #3992 Ga (pan) Antibody
- #3975 Ga(o) Antibody
- #3981 Ga(o) Antibody (IP Preferred)
- #3904 Ga(z) Antibody
- #3884 Phospho-Gab2 (Ser159) Antibody
- #3881 Phospho-Gab2 (Tyr452) Antibody
- #3239 Gab2 (26B6) Rabbit mAb
- #3835 GABA(B)R1 Antibody
- #4819 GABA(B)R2 (C44A4) Rabbit mAb
- #3839 GABA(B)R2 Antibody
- #5305 GAD1 Antibody
- XP** #5843 GAD2 (D5G2) XP® Rabbit mAb
- #3988 GAD2 Antibody
- #8945 GAP43 (D9C8) Rabbit mAb
- #5307 GAP43 Antibody
- #3670 GFAP (GA5) Mouse mAb
- #3655 GFAP (GA5) Mouse mAb (Alexa Fluor® 488 Conjugate)
- #3656 GFAP (GA5) Mouse mAb (Alexa Fluor® 555 Conjugate)
- New** #8152 GFAP (GA5) Mouse mAb (Alexa Fluor® 594 Conjugate)
- #3657 GFAP (GA5) Mouse mAb (Alexa Fluor® 647 Conjugate)
- #8068 Cleaved GGA3 (Asp313) (D16H3) Rabbit mAb

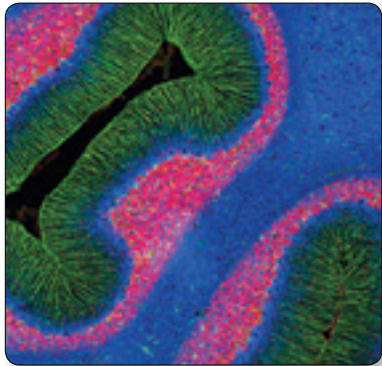


GFAP (GA5) Mouse mAb (Alexa Fluor® 594 Conjugate) #8152 and Neurofilament-L (C28E10) Rabbit mAb (Alexa Fluor® 488 Conjugate) #8024: Confocal IF analysis of rat cerebellum using #8152 (red) and #8024 (green). Blue pseudocolor = DRAQ5® #4084 (fluorescent DNA dye).

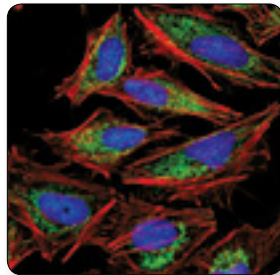
#8027 GGA3 (D66F1) Rabbit mAb
 #4167 GGA3 Antibody
 #2919 GiT-1 Antibody
 #3982 GRK2 Antibody
 #9316 Phospho-GSK-3 α (Ser21) (36E9) Rabbit mAb
 #8452 Phospho-GSK-3 α (Ser21) (D1G2) Rabbit mAb
 #9337 Phospho-GSK-3 α (Ser21) (46H12) Mouse mAb
 #5090 Phospho-GSK-3 α (Ser21) (27E5) Mouse mAb
 #9327 Phospho-GSK-3 α / β (Ser21/9) (37F11) Rabbit mAb (GSK-3 α Preferred)
 #8566 Phospho-GSK-3 α / β (Ser21/9) (D17D2) Rabbit mAb
 #9331 Phospho-GSK-3 α / β (Ser21/9) Antibody
XP #5558 Phospho-GSK-3 β (Ser9) (D85E12) XP[®] Rabbit mAb
 #9323 Phospho-GSK-3 β (Ser9) (5B3) Rabbit mAb
 #9322 Phospho-GSK-3 β (Ser9) (D3A4) Rabbit mAb
 #9336 Phospho-GSK-3 β (Ser9) Antibody
 #3548 Phospho-GSK-3 β (Thr390) Antibody
XP #4818 GSK-3 α (D80D1) XP[®] Rabbit mAb
 #4337 GSK-3 α (D80E6) Rabbit mAb
 #9338 GSK-3 α Antibody
XP #5676 GSK-3 α / β (D75D3) XP[®] Rabbit mAb
 #9315 GSK-3 β (27C10) Rabbit mAb
 #9832 GSK-3 β (3D10) Mouse mAb
 #3369 GSTP1 (3F2) Mouse mAb
 #8226 HIP2 (D27C4) Rabbit mAb
 #3847 E2-25K/Hip2 Antibody
 #8231 Homer1 Antibody
XP #5656 Huntingtin (D7F7) XP[®] Rabbit mAb
 #2773 Huntingtin Antibody
 #3486 KCNE1 Antibody
 #5559 LRRK2 Antibody
 #2567 LRRK2 Antibody
New #9086 MAG Antibody
 #4541 Phospho-MAP2 (Ser136) Antibody
 #4544 Phospho-MAP2 (Thr1620/1623) Antibody
 #4542 MAP2 Antibody
 #9118 MARK2 Antibody
XP #3456 MeCP2 (D4F3) XP[®] Rabbit mAb
 #9737 Phospho-MEF2A (Ser408) Antibody
 #9736 MEF2A Antibody
 #2274 MELK Antibody
 #6921 Mena (D33C1) Rabbit mAb
 #2075 Mena Antibody
 #9163 Phospho-Merlin (Ser518) Antibody

#6995 Merlin (D1D8) Rabbit mAb
 #5310 mGluR1 Antibody
 #4787 Msx1 (G116) Antibody
 #5378 Msx1 (P5) Antibody
 #8474 Munc18-1 Antibody
XP #5663 Musashi-1 (D46A8) XP[®] Rabbit mAb
 #2154 Musashi Antibody
 #9405 N-Myc Antibody
 #4420 NAC1 Antibody (Human Preferred)
 #4183 NAC1 Antibody (Rodent Preferred)
 #3576 CD56 (NCAM) (123C3) Mouse mAb
 #3606 NCAM (CD56) Antibody
XP #8237 NCS1 (D12D2) XP[®] Rabbit mAb
 #4760 Nestin (Rat-401) Mouse mAb
 #4373 NeuroD (D35G2) Rabbit mAb
 #7019 NeuroD (D90G12) Rabbit mAb
 #2833 NeuroD Antibody
 #2837 Neurofilament-L (C28E10) Rabbit mAb
New #8024 Neurofilament-L (C28E10) Rabbit mAb (Alexa Fluor[®] 488 Conjugate)
 #8039 Neurofilament-L (C28E10) Rabbit mAb (Alexa Fluor[®] 555 Conjugate)
New #8590 Neurofilament-L (C28E10) Rabbit mAb (Alexa Fluor[®] 647 Conjugate)
 #2835 Neurofilament-L (DA2) Mouse mAb
 #2836 Neurofilament-H (RMd0 20) Mouse mAb
 #2838 Neurofilament-M (RMO 14.9) Mouse mAb
 #3725 Neuropilin-1 (D62C6) Rabbit mAb
XP #3366 Neuropilin-2 (D39A5) XP[®] Rabbit mAb
 #4235 NG2 Antibody
 #2046 NGF Antibody
New #8601 NHERF1 (D1C10) Rabbit mAb
 #3382 NHERF1 (A140) Antibody
 #3394 NHERF1 (A310) Antibody
New #9568 NHERF2 (D3A5) Rabbit mAb
 #5665 Nicastrin (D38F9) Rabbit mAb
New #9447 Nicastrin (D65G7) Rabbit mAb
 #3632 Nicastrin Antibody
 #8351 NKCC1 (D13A9) Rabbit mAb
 #4828 NKCC1 Antibody
 #3381 Phospho-NMDAR1 (Ser890) Antibody
 #3384 Phospho-NMDAR1 (Ser896) Antibody
 #3385 Phospho-NMDAR1 (Ser897) Antibody
 #5704 NMDAR1 (D65B7) Rabbit mAb
 #4206 Phospho-NMDAR2A (Tyr1246) Antibody
 #4205 NMDAR2A Antibody
 #4209 Phospho-NMDAR2B (Tyr1070) Antibody
 #5355 Phospho-NMDAR2B (Ser1284) Antibody

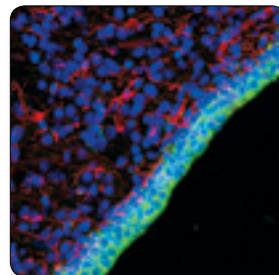
#4208 Phospho-NMDAR2B (Tyr1472) Antibody
 #4212 NMDAR2B (D15B3) Rabbit mAb
 #5580 NMDAR2B (N59/36.1) Mouse mAb
 #4207 NMDAR2B Antibody
 #4456 Nna1 Antibody
 #4236 nNOS (C12H1) Rabbit mAb
 #4231 nNOS (C7D7) Rabbit mAb
 #4234 nNOS Antibody
 #4147 Cleaved Notch1 (Val1744) (D3B8) Rabbit mAb
 #2421 Cleaved Notch1 (Val1744) Antibody
XP #3608 Notch1 (D1E11) XP[®] Rabbit mAb
 #3268 Notch1 (C44H11) Rabbit mAb
 #3439 Notch1 (C37C7) Rabbit mAb
 #3447 Notch1 (5B5) Rat mAb
 #2420 Notch2 (8A1) Rabbit mAb
 #5276 Notch3 (D11B8) Rabbit mAb
 #2889 Notch3 Antibody
 #3446 Notch3 (8G5) Rat mAb
 #2423 Notch4 (L5C5) Mouse mAb
XP #3924 NSF (D31C7) XP[®] Rabbit mAb
 #2756 Numb (C29G11) Rabbit mAb
 #2761 Numb (C44B4) Rabbit mAb
 #3451 Phospho- μ -Opioid Receptor (Ser375) Antibody
New #8136 OTX2 Antibody
 #2680 p35/25 (C64B10) Rabbit mAb
 #3275 p39 Antibody
 #3923 p67phox Antibody
XP #8238 p75NTR (D4B3) XP[®] Rabbit mAb
 #4201 p75NTR (D8A8) Rabbit mAb
 #2693 p75NTR Antibody
 #5879 PARK9 Antibody
 #2132 Parkin Antibody
 #4211 Parkin (Prk8) Mouse mAb
New #8502 PEN2 (D2G6) Rabbit mAb
New #8598 PEN2 (D6G8) Rabbit mAb
 #5451 PEN2 Antibody
 #5660 PINK1 (N4/15.11) Mouse mAb
 #3813 Plexin A1 Antibody
 #5658 Plexin A2 (D42B5) Rabbit mAb
 #6896 Plexin A2 (D44D4) Rabbit mAb
 #3994 Plexin A2 Antibody
 #5512 Plexin A3 (D2G12) Rabbit mAb
 #3816 Plexin A4 (C5D1) Rabbit mAb
 #5643 Presenilin 1 (D39D1) Rabbit mAb
 #3622 Presenilin 1 Antibody
 #9979 Presenilin 2 (D30G3) Rabbit mAb
 #2192 Presenilin 2 Antibody



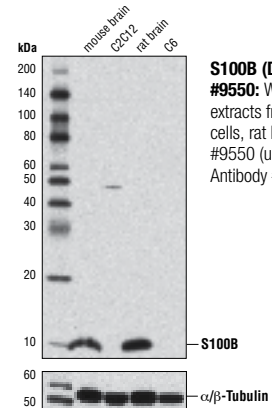
Neurofilament-L (C28E10) Rabbit mAb (Alexa Fluor[®] 647 Conjugate) #8590: Confocal IF analysis of normal rat cerebellum using #8590 (blue) and GFAP (GA5) Mouse mAb #3670 (green). Red = Propidium iodide (fluorescent DNA dye).



TFAM (D5C8) Rabbit mAb #8076: Confocal IF analysis of HeLa cells using #8076 (green). Actin filaments were labeled with DY-554 phalloidin (red). Blue pseudocolor = DRAQ5[®] #4084 (fluorescent DNA dye).

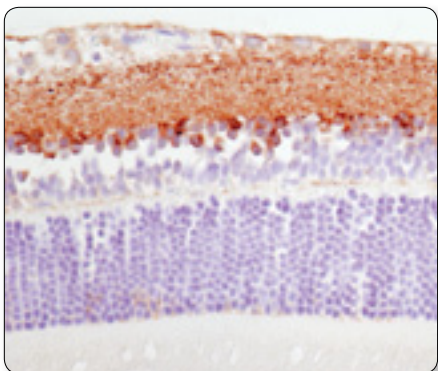


Musashi-1 (D46A8) XP[®] Rabbit mAb #5663: Confocal IF analysis of P4 rat brain using #5663 (green) and Nestin (Rat-401) Mouse mAb #4760 (red). Blue pseudocolor = DRAQ5[®] #4084 (fluorescent DNA dye).



S100B (D10G6) Rabbit mAb #9550: Western blot analysis of extracts from mouse brain, C2C12 cells, rat brain, and C6 cells using #9550 (upper) and α -Tubulin Antibody #2148 (lower).

	#2930 Phospho-PSD93 (Tyr340) Antibody
	#3919 Phospho-PSD95 (Tyr236/Tyr240) Antibody
XP	#3450 PSD95 (D27E11) XP [®] Rabbit mAb
XP	#3409 PSD95 (D74D3) XP [®] Rabbit mAb
	#2507 PSD95 Antibody
	#5657 RAIG1 Antibody
	#3321 Phospho-Ras-GRF1 (Ser916) Antibody
	#3322 Ras-GRF1 Antibody
	#3221 Phospho-Ret (Tyr905) Antibody
	#3220 Ret Antibody
New	#9550 S100B (D10G6) Rabbit mAb
	#3733 SAP102 (G670) Antibody
	#5622 Phospho-Semaphorin 4B (Ser825) Antibody
	#3355 Semaphorin 4B Antibody
New	#9879 Serotonin Receptor 1A/5-HTR1A Antibody
	#3279 Shootin1 Antibody
	#8442 SLC1A4 Antibody
	#5308 SNAP25 (D7B4) Rabbit mAb
	#5309 SNAP25 (D9A12) Rabbit mAb
	#4117 SNAP25 (A195) Antibody
	#3926 SNAP25 (D110) Antibody
	#3757 SNIP/p140Cap Antibody
	#4266 SOD1 (71G8) Mouse mAb
	#2770 SOD1 Antibody
	#2503 Stargazin Antibody
New	#8511 Stargazin (D33G3) Rabbit mAb
XP	#5659 Non-phospho-STEP (Ser221) (D74H3) XP [®] Rabbit mAb
New	#9017 STEP (D7E2) Rabbit mAb
New	#9069 STEP (D9H3) Rabbit mAb
	#4396 STEP (23E5) Mouse mAb
	#4817 STEP Antibody
	#4265 STOP (175) Mouse mAb
	#2311 Phospho-Synapsin (Ser9) Antibody
XP	#5297 Synapsin-1 (D12G5) XP [®] Rabbit mAb
	#6710 Synapsin-1 (D13C1) Rabbit mAb
	#2312 Synapsin Antibody
	#5539 SynGAP (D20C7) Rabbit mAb
	#5540 SynGAP (D78B11) Rabbit mAb
	#3200 SynGAP Antibody
XP	#4179 α -Synuclein (D37A6) XP [®] Rabbit mAb
	#2647 α -Synuclein (Syn204) Mouse mAb
	#2644 α/β -Synuclein (Syn205) Mouse mAb
	#2642 α -Synuclein Antibody
	#2628 α -Synuclein Antibody (IF Preferred)



Synapsin-1 (D12G5) XP[®] Rabbit mAb #5297: IHC analysis of paraffin-embedded rat retina using #5297.

XP	#5461 Synaptophysin (D35E4) XP [®] Rabbit mAb
	#5467 Synaptophysin (D40C4) Rabbit mAb
	#4329 Synaptophysin Antibody
	#3347 SYT1 Antibody
	#3976 TACE Antibody
	#9632 Phospho-Tau (Ser396) (PHF13) Mouse mAb
	#4019 Tau (Tau46) Mouse mAb
	#3449 TDP43 (A260) Antibody
	#3448 TDP43 (G400) Antibody
New	#8076 TFAM (D5C8) Rabbit mAb
	#7495 TFAM Antibody
	#9798 Thy1 Antibody
	#2076 TMP21 Antibody
	#2150 TorsinA (D-M2A8) Mouse mAb
	#4619 Phospho-TrkA (Tyr490)/TrkB (Tyr516) (C35G9) Rabbit mAb
	#9141 Phospho-TrkA (Tyr490) Antibody
	#4621 Phospho-TrkA (Tyr674/675)/TrkB (Tyr706/707) (C50F3) Rabbit mAb
	#4168 Phospho-TrkA (Tyr785)/TrkB (Tyr816) (C67C8) Rabbit mAb
	#4609 Trk (pan) (C17F1) Rabbit mAb
	#2508 TrkA (14G6) Rabbit mAb
	#2505 TrkA Antibody
	#4603 TrkB (80E3) Rabbit mAb
	#4607 TrkB (80G2) Rabbit mAb
	#4606 TrkB Antibody
	#3376 TrkC (C44H5) Rabbit mAb
	#3484 TRPV3 Antibody
XP	#5335 Acetyl- α -Tubulin (Lys40) (D20G3) XP [®] Rabbit mAb
	#3971 Acetyl- α -Tubulin (Lys40) Antibody
	#2125 α -Tubulin (11H10) Rabbit mAb
	#5063 α -Tubulin (11H10) Rabbit mAb (Alexa Fluor [®] 488 Conjugate)
	#5059 α -Tubulin (11H10) Rabbit mAb (Alexa Fluor [®] 555 Conjugate)
	#5046 α -Tubulin (11H10) Rabbit mAb (Alexa Fluor [®] 647 Conjugate)
	#4285 α -Tubulin (11H10) Rabbit mAb (Biotinylated)
	#9099 α -Tubulin (11H10) Rabbit mAb (HRP Conjugate)
	#3873 α -Tubulin (DM1A) Mouse mAb
	#8058 α -Tubulin (DM1A) Mouse mAb (Alexa Fluor [®] 488 Conjugate)
	#2144 α -Tubulin Antibody
	#2148 α/β -Tubulin Antibody
	#2128 β -Tubulin (9F3) Rabbit mAb
	#3623 β -Tubulin (9F3) Rabbit mAb (Alexa Fluor [®] 488 Conjugate)
	#2116 β -Tubulin (9F3) Rabbit mAb (Alexa Fluor [®] 555 Conjugate)
	#3624 β -Tubulin (9F3) Rabbit mAb (Alexa Fluor [®] 647 Conjugate)
	#6181 β -Tubulin (9F3) Rabbit mAb (Biotinylated)
	#5346 β -Tubulin (9F3) Rabbit mAb (HRP Conjugate)
	#5867 β -Tubulin (9F3) Rabbit mAb (PE Conjugate)
	#2146 β -Tubulin Antibody
XP	#5666 β 3-Tubulin (D65A4) XP [®] Rabbit mAb
XP	#5568 β 3-Tubulin (D71G9) XP [®] Rabbit mAb
	#4466 β 3-Tubulin (TU-20) Mouse mAb
	#5886 γ -Tubulin Antibody
	#3370 Phospho-Tyrosine Hydroxylase (Ser31) Antibody
	#2791 Phospho-Tyrosine Hydroxylase (Ser40) Antibody
	#2792 Tyrosine Hydroxylase Antibody
	#3525 UCHL3 Antibody

	#4634 Phospho-ULK1 (Ser467) Antibody
	#4776 ULK1 (A705) Antibody
	#4773 ULK1 (R600) Antibody

PathScan[®] Sandwich ELISA

New	#7385 PathScan [®] Phospho-CREB (Ser133) Sandwich ELISA Kit
New	#7390 PathScan [®] Total CREB Sandwich ELISA Kit
	#7210 PathScan [®] Phospho-TrkA (Tyr490) Sandwich ELISA Kit
	#7212 PathScan [®] Phospho-TrkA (Tyr674/675) Sandwich ELISA Kit
	#7208 PathScan [®] Total TrkA Sandwich ELISA Kit
	#7111 PathScan [®] Phospho-TrkB (Tyr516) Sandwich ELISA Kit
	#7118 PathScan [®] Phospho-TrkB (Tyr706/707) Sandwich ELISA Kit
	#7108 PathScan [®] Phospho-TrkB (panTyr) Sandwich ELISA Kit
	#7106 PathScan [®] Total TrkB Sandwich ELISA Kit
	#7944 PathScan [®] Total α -Tubulin Sandwich ELISA Kit
	#7945 PathScan [®] Total α -Tubulin Sandwich ELISA Antibody Pair
	#7204 PathScan [®] Acetyl- α -Tubulin Sandwich ELISA Kit

SignalSilence[®] siRNA

	#6216 SignalSilence [®] CDK5 siRNA I
	#6217 SignalSilence [®] CDK5 siRNA II
	#6588 SignalSilence [®] CREB siRNA I
	#6343 SignalSilence [®] CREB siRNA I (Mouse Specific)
	#6590 SignalSilence [®] CREB siRNA II
	#6344 SignalSilence [®] CREB siRNA II (Mouse Specific)
New	#7664 SignalSilence [®] Dopamine β -Hydroxylase (DBH) siRNA I
	#6312 SignalSilence [®] GSK-3 α siRNA I
	#6333 SignalSilence [®] GSK-3 α siRNA I (Mouse Specific)
	#6524 SignalSilence [®] GSK-3 α siRNA II
	#6335 SignalSilence [®] GSK-3 α siRNA II (Mouse Specific)
	#6301 SignalSilence [®] GSK-3 α/β siRNA
	#6993 SignalSilence [®] GSK-3 β siRNA I (Mouse Specific)
	#6316 SignalSilence [®] Merlin siRNA I
	#6338 SignalSilence [®] Merlin siRNA II
	#6613 SignalSilence [®] TrkA siRNA I

Controls

	#1090 Phospho-CREB (Ser133) Blocking Peptide
	#9193 CREB Control Cell Extracts
	#1081 DARPP-32 Blocking Peptide
	#1015 EGR1 Blocking Peptide
	#9237 GSK-3 Fusion Protein
	#1027 Phospho-GSK-3 α (Ser21) Blocking Peptide
	#1073 GSK-3 β Blocking Peptide
	#1005 Neurofilament-L Blocking Peptide
	#1435 TrkA Blocking Peptide
	#1032 β -Tubulin Blocking Peptide

Growth Factors and Cytokines

	#3897 Human Brain-Derived Neurotrophic Factor (BDNF)
	#5221 Human β -Nerve Growth Factor (h β -NGF)

USA Headquarters

Cell Signaling Technology, Inc.
Tel: 978-867-2300
E-mail: info@cellsignal.com
www.cellsignal.com

International Subsidiaries

Cell Signaling Technology (China) Limited
Tel: (86) 21-5835-6288
E-mail: info@cst-c.com.cn
www.cellsignal.com

Cell Signaling Technology Europe
Tel: +31 (0)71 568 1060
E-mail: info@cellsignal.eu
www.cellsignal.com

Cell Signaling Technology Japan, K.K.
Tel: 03-3295-16300
E-mail: info@cstj.co.jp
www.cstj.co.jp

Supporting Products

Antibody Sampler Kits

- #9962 Epitope Tag Antibody Sampler Kit
- #5142 Loading Control Antibody Sampler Kit
- #4670 Loading Control Antibody Sampler Kit (HRP Conjugate)

Secondary Antibodies and Detection Reagents

- #7071 Phototope®-HRP Western Blot Detection System, Anti-rabbit IgG, HRP-linked Antibody
- #7072 Phototope®-HRP Western Blot Detection System, Anti-mouse IgG, HRP-linked Antibody
- #4929 Albumin Antibody
- #5597 Anti-biotin (D5A7) Rabbit mAb
- #5571 Anti-biotin (D5A7) Rabbit mAb (HRP Conjugate)
- #7055 Anti-biotin, AP-linked Antibody
- #7075 Anti-biotin, HRP-linked Antibody
- New** #9863 Protein A Agarose Beads
- New** #8687 Protein A Magnetic Beads
- New** #8740 Protein G Magnetic Beads
- #7054 Anti-rabbit IgG, AP-linked Antibody
- #7074 Anti-rabbit IgG, HRP-linked Antibody
- #4412 Anti-rabbit IgG (H+L), F(ab)² Fragment (Alexa Fluor® 488 Conjugate)
- #4413 Anti-rabbit IgG (H+L), F(ab)² Fragment (Alexa Fluor® 555 Conjugate)
- #4414 Anti-rabbit IgG (H+L), F(ab)² Fragment (Alexa Fluor® 647 Conjugate)
- #6990 Anti-rabbit IgG F(ab)² Fragment (Sephacose Bead Conjugate)
- #5366 Anti-rabbit IgG (H+L) (DyLight® 680 Conjugate)
- #5151 Anti-rabbit IgG (H+L) (DyLight® 800 Conjugate)
- #3678 Mouse Anti-rabbit IgG (Conformation Specific) (L27A9) mAb
- New** #5127 Mouse Anti-rabbit IgG (Conformation Specific) (L27A9) mAb (HRP Conjugate)
- #3677 Mouse Anti-rabbit IgG (Light-Chain Specific) (L57A3) mAb
- #7056 Anti-mouse IgG, AP-linked Antibody
- #7076 Anti-mouse IgG, HRP-linked Antibody
- #4408 Anti-mouse IgG (H+L), F(ab)² Fragment (Alexa Fluor® 488 Conjugate)
- #4409 Anti-mouse IgG (H+L), F(ab)² Fragment (Alexa Fluor® 555 Conjugate)
- #4410 Anti-mouse IgG (H+L), F(ab)² Fragment (Alexa Fluor® 647 Conjugate)
- #5946 Anti-mouse IgG (H+L), F(ab)² Fragment (Sephacose Bead Conjugate)
- #5470 Anti-mouse IgG (H+L) (DyLight® 680 Conjugate)
- #5257 Anti-mouse IgG (H+L) (DyLight® 800 Conjugate)
- #7077 Anti-rat IgG, HRP-linked Antibody
- #4416 Anti-rat IgG (H+L), (Alexa Fluor® 488 Conjugate)
- #4417 Anti-rat IgG (H+L), (Alexa Fluor® 555 Conjugate)
- #4418 Anti-rat IgG (H+L), (Alexa Fluor® 647 Conjugate)
- #8125 SignalStain® Boost IHC Detection Reagent (HRP, Mouse)
- #8114 SignalStain® Boost IHC Detection Reagent (HRP, Rabbit)
- #8112 SignalStain® Antibody Diluent
- #3419 Streptavidin (Sephacose Bead Conjugate)
- #3999 Streptavidin-HRP

Buffers and Related Products

- #7003 20X LumiGLO® Reagent and 20X Peroxide
- #9998 BSA
- #9803 Cell Lysis Buffer (10X)
- #9852 Chaps Cell Extract Buffer (10X)
- New** #9871 20 mM Citrate pH 3.0 (Sterile)
- #4083 DAPI
- #4084 DRAQ5®
- New** #7406 DRAQ7™
- #4082 Hoechst #33342
- #5425 Normal Goat Serum
- #9999 Nonfat Dry Milk
- #7722 Blue Loading Buffer Pack
- #7723 Red Loading Buffer Pack
- New** #9872 Phosphate Buffered Saline (PBS-1X) pH7.2 (Sterile)
- #9808 Phosphate Buffered Saline (PBS-20X)
- #9809 Phosphate Buffered Saline with Tween 20 (PBST-20X)
- #5870 Phosphatase Inhibitor Cocktail (100X)
- #5871 Protease Inhibitor Cocktail (100X)
- #5872 Protease/Phosphatase Inhibitor Cocktail (100X)
- #7727 Biotinylated Protein Ladder Detection Pack
- #7720 Prestained Protein Marker, Broad Range (Premixed Format)
- #4087 Propidium Iodide (PI)/RNase Staining Solution
- #9806 RIPA Buffer (10X)
- #6883 SignalFire™ ECL Reagent
- #7002 STOP Solution
- #7004 TMB Substrate
- #4050 Tris-Glycine SDS Running Buffer (10X)
- #9997 Tris Buffered Saline with Tween 20 (TBST-10X)

Isotype Controls

- XP** #3900 Rabbit (DA1E) mAb IgG XP® Isotype Control
- XP** #2975 Rabbit (DA1E) mAb IgG XP® Isotype Control (Alexa Fluor® 488 Conjugate)
- New** #3969 Rabbit (DA1E) mAb IgG XP® Isotype Control (Alexa Fluor® 555 Conjugate)
- XP** #2985 Rabbit (DA1E) mAb IgG XP® Isotype Control (Alexa Fluor® 647 Conjugate)
- XP** #4096 Rabbit (DA1E) mAb IgG XP® Isotype Control (Biotinylated)
- XP** #3423 Rabbit (DA1E) mAb IgG XP® Isotype Control (Sephacose Bead Conjugate)
- XP** #8726 Rabbit (DA1E) mAb IgG XP® Isotype Control (Magnetic Bead Conjugate)
- XP** #5742 Rabbit (DA1E) mAb IgG XP® Isotype Control (PE Conjugate)
- #2729 Normal Rabbit IgG
- #4340 Rabbit IgG Isotype Control (Alexa Fluor® 488 Conjugate)
- #3452 Rabbit IgG Isotype Control (Alexa Fluor® 647 Conjugate)
- #3420 Mouse IgG (Sephacose Bead Conjugate)
- #5873 Mouse IgG (Magnetic Bead Conjugate)
- #5415 Mouse (G3A1) mAb IgG1 Isotype Control
- New** #9641 Mouse (G3A1) mAb IgG1 Isotype Control (Alexa Fluor® 555 Conjugate)
- #6899 Mouse (G3A1) mAb IgG1 Isotype Control (PE Conjugate)
- #4878 Mouse (MOPC-21) mAb IgG1 Isotype Control (Alexa Fluor® 488 Conjugate)
- #4843 Mouse (MOPC-21) mAb IgG1 Isotype control (Alexa Fluor® 647 Conjugate)
- #4097 Mouse (MOPC-21) mAb IgG1 Isotype Control (Biotinylated)

Epitope Tag Antibodies

- New** #8146 DYKDDDDK Tag (9A3) Mouse mAb (Binds to same epitope as Sigma's Anti-FLAG® M2 Antibody)
- #2368 DYKDDDDK Tag Antibody (Binds to same epitope as Sigma's Anti-FLAG® M2 Antibody)
- #2044 DYKDDDDK Tag Antibody (Binds to same epitope as Sigma's Anti-FLAG® M2 Antibody) (HRP Conjugate)
- #5407 DYKDDDDK Tag Antibody (Binds to same epitope as Sigma's Anti-FLAG® M2 Antibody) (Alexa Fluor® 488 Conjugate)
- #3768 DYKDDDDK Tag Antibody (Binds to same epitope as Sigma's Anti-FLAG® M2 Antibody) (Alexa Fluor® 555 Conjugate)
- New** #9696 DYKDDDDK Tag Antibody (Binds to same epitope as Sigma's Anti-FLAG® M2 Antibody) (Alexa Fluor® 594 Conjugate)
- #2908 DYKDDDDK Tag Antibody (Binds to same epitope as Sigma's Anti-FLAG® M2 Antibody) (Biotinylated)
- #2372 β-Gal (14B7) Mouse mAb
- XP** #2956 GFP (D5.1) XP® Rabbit mAb
- XP** #2912 GFP (D5.1) XP® Rabbit mAb (Biotinylated)
- XP** #2037 GFP (D5.1) XP® Rabbit mAb (HRP Conjugate)
- #2555 GFP Antibody
- #2955 GFP (4B10) Mouse mAb
- #9325 GSK-3β-Tag Antibody
- #2625 GST (91G1) Rabbit mAb
- #5746 GST (91G1) Rabbit mAb (Biotinylated)
- #5475 GST (91G1) Rabbit mAb (HRP Conjugate)
- #2624 GST (26H1) Mouse mAb
- #3368 GST (26H1) Mouse mAb (Alexa Fluor® 488 Conjugate)
- #3720 GST (26H1) Mouse mAb (Alexa Fluor® 555 Conjugate)
- #3445 GST (26H1) Mouse mAb (Alexa Fluor® 647 Conjugate)
- #3513 GST (26H1) Mouse mAb (Sephacose Bead Conjugate)
- #2622 GST Antibody
- #2448 Glu-Glu Tag Antibody
- #3724 HA-Tag (C29F4) Rabbit mAb
- #3956 HA-Tag (C29F4) Rabbit mAb (Sephacose Bead Conjugate)
- #5017 HA-Tag (C29F4) Rabbit mAb (Biotinylated)
- #2367 HA-Tag (6E2) Mouse mAb
- #2350 HA-Tag (6E2) Mouse mAb (Alexa Fluor® 488 Conjugate)
- #3444 HA-Tag (6E2) Mouse mAb (Alexa Fluor® 647 Conjugate)
- #2999 HA-Tag (6E2) Mouse mAb (HRP Conjugate)
- #2365 His-Tag Antibody
- #2366 His-Tag (27E8) Mouse mAb
- #4079 His-Tag (27E8) Mouse mAb (Sephacose Bead Conjugate)
- #2396 MBP (8G1) Mouse mAb
- #2278 Myc-Tag (71D10) Rabbit mAb
- #3946 Myc-Tag (71D10) Rabbit mAb (Biotinylated)
- #2272 Myc-Tag Antibody
- #2276 Myc-Tag (9B11) Mouse mAb
- #2279 Myc-Tag (9B11) Mouse mAb (Alexa Fluor® 488 Conjugate)
- #3756 Myc-Tag (9B11) Mouse mAb (Alexa Fluor® 555 Conjugate)
- New** #9483 Myc-Tag (9B11) Mouse mAb (Alexa Fluor® 594 Conjugate)
- #2233 Myc-Tag (9B11) Mouse mAb (Alexa Fluor® 647 Conjugate)
- #2040 Myc-Tag (9B11) Mouse mAb (HRP Conjugate)
- #3400 Myc-Tag (9B11) Mouse mAb (Sephacose Bead Conjugate)
- #5698 Myc-Tag (9B11) Mouse mAb (Magnetic Bead Conjugate)
- New** #3739 Myc-Tag (9B11) Mouse mAb (PE Conjugate)
- New** #8476 S-Tag Antibody
- #2547 Tat (8C2) Mouse mAb