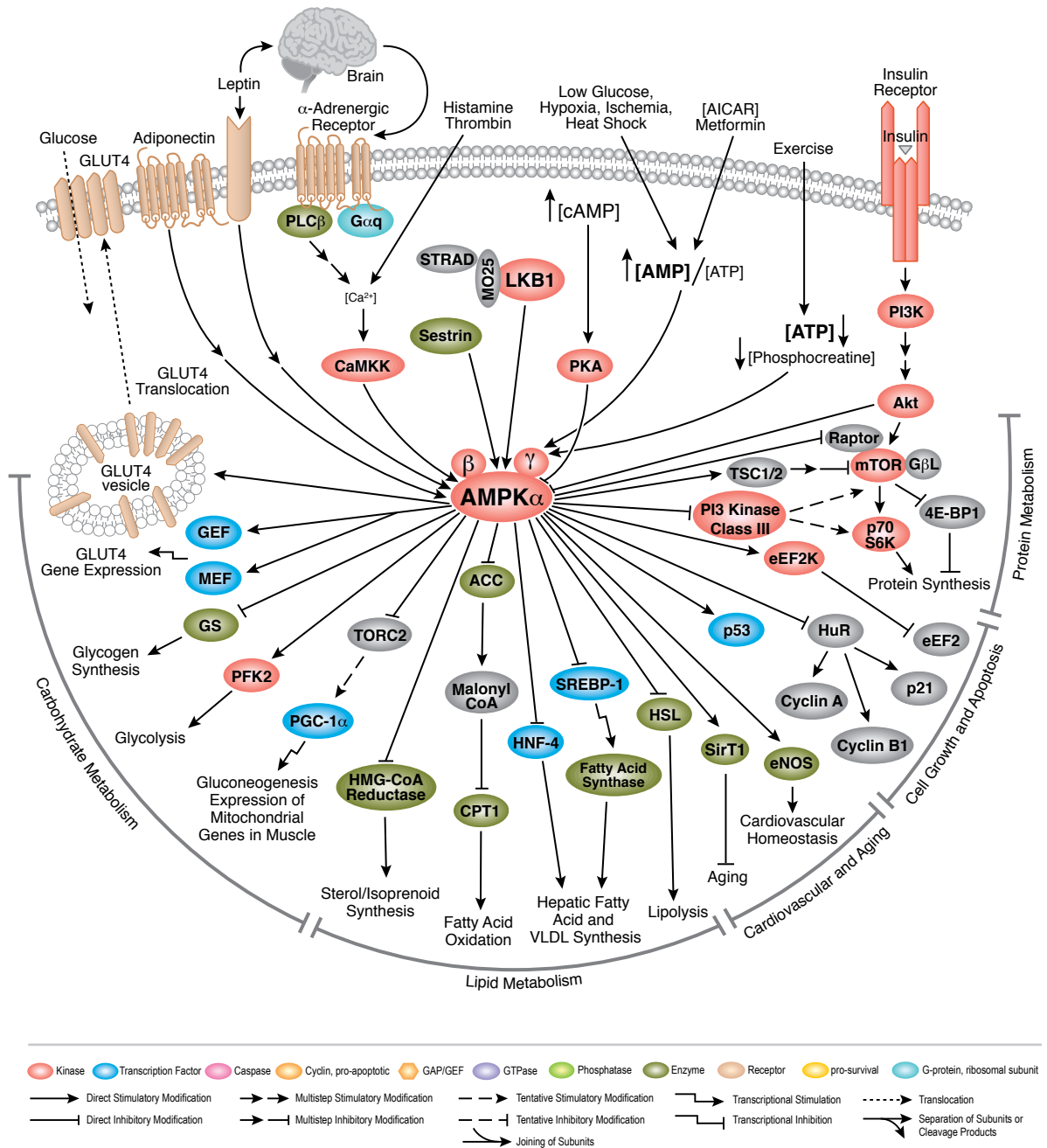


# Antibodies and Related Reagents for Cellular Metabolism

## Product Pathways

- Motif Antibodies
- Chromatin Regulation
- MAP Kinase Signaling
- Apoptosis and Autophagy
- PI3K / Akt Signaling
- > Cellular Metabolism
- Translational Control
- Development and Differentiation
- Stem Cell and Lineage Markers
- Ca<sup>2+</sup>, cAMP, and Lipid Signaling
- Cell Cycle/Checkpoint Control
- NF-κB Signaling
- Lymphocyte Signaling
- Neuroscience
- Tyrosine Kinases and Docking Proteins
- Angiogenesis
- Nuclear Receptors and Phosphatases
- Cytoskeletal Signaling
- Adhesion
- Protein Folding and Stability

## AMPK Signaling



For Research Use Only.  
Not For Use In  
Diagnostic Procedures.

# Glucose and Energy Metabolism

## PathScan® Sandwich ELISA

- #7996 PathScan® Total Acetyl-CoA Carboxylase Sandwich ELISA Kit
- #7955 PathScan® Phospho-AMPKα (Thr172) Sandwich ELISA Antibody Pair
- #7302 PathScan® Phospho-IGF-I Receptor β (Tyr1131) Sandwich ELISA Kit
- #7820 PathScan® Phospho-IGF-I Receptor β (Tyr1131) Sandwich ELISA Antibody Pair
- #7082 PathScan® Phospho-Insulin Receptor β (panTyr) Sandwich ELISA Kit
- #7254 PathScan® Phospho-Insulin Receptor β (Tyr1146) Sandwich ELISA Kit
- #7827 PathScan® Phospho-Insulin Receptor β (Tyr1146) Sandwich ELISA Antibody Pair
- #7258 PathScan® Phospho-Insulin Receptor β (Tyr1150/1151) Sandwich ELISA Kit
- #7828 PathScan® Phospho-Insulin Receptor β (Tyr1150/1151) Sandwich ELISA Antibody Pair
- #7326 PathScan® Phospho-Insulin Receptor β (Tyr1345) Sandwich ELISA Kit
- #7823 PathScan® Phospho-Insulin Receptor β (Tyr1345) Sandwich ELISA Antibody Pair
- #7133 PathScan® Phospho-IRS-1 (panTyr) Sandwich ELISA Kit
- #7347 PathScan® Phospho-IRS-1 (panTyr) Sandwich ELISA Antibody Pair
- #7283 PathScan® Phospho-IRS-1 (Ser302) Sandwich ELISA Kit
- #7284 PathScan® Phospho-IRS-1 (Ser302) Sandwich ELISA Antibody Pair
- #7287 PathScan® Phospho-IRS-1 (Ser307) Sandwich ELISA Kit
- #7332 PathScan® Phospho-IRS-1 (Ser612) Sandwich ELISA Kit
- #7860 PathScan® Phospho-IRS-2 (panTyr) Sandwich ELISA Kit
- #7861 PathScan® Phospho-IRS-2 (panTyr) Sandwich ELISA Antibody Pair
- #7328 PathScan® Total IRS-1 Sandwich ELISA Kit
- #7884 PathScan® Total IRS-2 Sandwich ELISA Kit
- #7885 PathScan® Total IRS-2 Sandwich ELISA Antibody Pair

## SignalSilence® siRNA

- #6224 SignalSilence® Acetyl-CoA Carboxylase 1 siRNA I
- #6397 SignalSilence® Acetyl-CoA Carboxylase 1 siRNA I (Mouse Specific)
- #6237 SignalSilence® Acetyl-CoA Carboxylase 1 siRNA II
- #6398 SignalSilence® Acetyl-CoA Carboxylase 1 siRNA II (Mouse Specific)
- #6620 SignalSilence® AMPKα2 siRNA I
- #6630 SignalSilence® AMPKα2 siRNA II
- New** #7670 SignalSilence® CA2 siRNA I
- New** #7589 SignalSilence® CA2 siRNA II
- #6610 SignalSilence® IGF-I Receptor siRNA I
- #6346 SignalSilence® IRS-1 siRNA I (Mouse Specific)
- #6374 SignalSilence® IRS-1 siRNA II (Mouse Specific)
- #6284 SignalSilence® MTAP siRNA I
- #6285 SignalSilence® MTAP siRNA II

## Controls

- #1062 Acetyl-CoA Carboxylase Blocking Peptide
- #9158 AMPK Control Cell Extracts
- #1074 AMPKβ1/2 Blocking Peptide
- #1006 ATGL Blocking Peptide
- #1525 IGF-I Receptor β Blocking Peptide

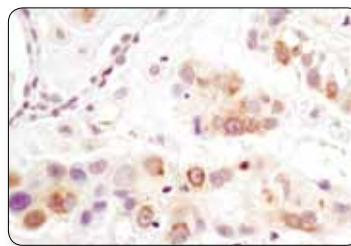
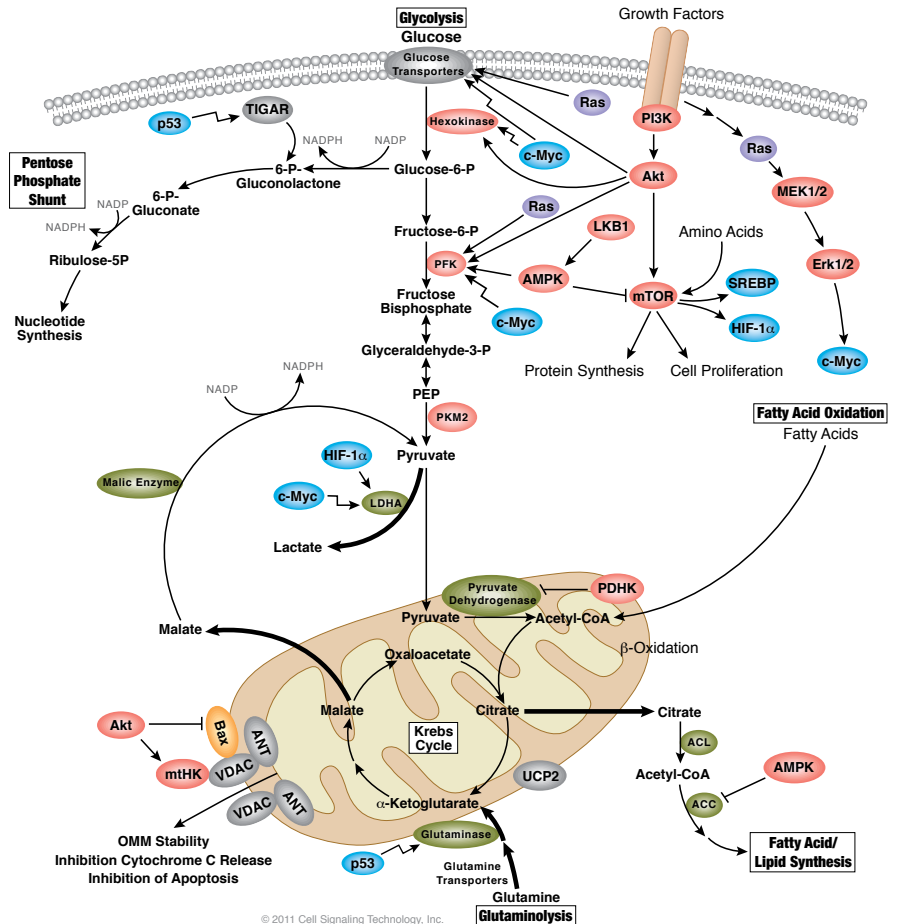
## Growth Factors and Cytokines

- #8917 Human Insulin-like Growth Factor I (hIGF-I)
- New** #9897 Mouse Insulin-like Growth Factor I (mIGF-I)

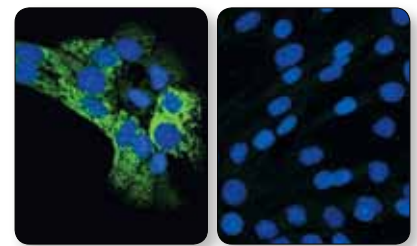
## Chemical Modulators

- #9944 AICAR
- #9996 Oligomycin

## Warburg Effect



**Pyruvate Dehydrogenase (C54G1) Rabbit mAb #3205:** IHC analysis of paraffin-embedded human lung carcinoma using #3205.



**StAR (D10H12) XP® Rabbit mAb #8449:** Confocal IF analysis of MLTC-1 (left) and C2C12 (right) cells using #8449 (green). Blue pseudocolor = DRAQ5® #4084 (fluorescent DNA dye).

## Supporting Products

We offer a growing list of complementary products to support your research, such as epitope tag antibodies, isotype controls, and secondary antibodies. Please see the supporting products section of our catalog at [www.cellsignal.com/catalog/](http://www.cellsignal.com/catalog/)

## Antibody Sampler Kits

#9957 AMPK and ACC Antibody Sampler Kit

#9839 AMPK Subunit Antibody Sampler Kit

**New** #8335 Fatty Acid and Lipid Metabolism Antibody Sampler Kit

**New** #8337 Glycolysis Antibody Sampler Kit

#8338 Phospho-Insulin/IGF Receptor Antibody Sampler Kit

#3015 Insulin Receptor Substrate Antibody Sampler Kit

**New** #8334 Lipolysis Activation Antibody Sampler Kit

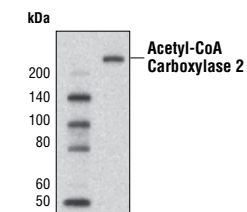
## PhosphoPlus® Antibody Duets

#8208 PhosphoPlus® AMPKα (Thr172) Antibody Duet

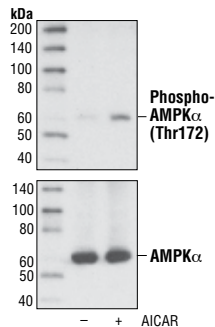
#5132 PhosphoPlus® LKB1 (Ser428) Antibody Duet

## Antibodies

	Application	Reactivity
#4477 ABCG2 Antibody	W	H, M, R, (Mk, X, B, Dg)
#3658 AceCS1 (D19C6) Rabbit mAb	W, IP	H, M, R, Mk
#3661 Phospho-Acetyl-CoA Carboxylase (Ser79) Antibody	W, IP, IHC-P	H, M, R, Mk, (C, B)
#3676 Acetyl-CoA Carboxylase (C83B10) Rabbit mAb	W, IHC-P, IF-IC, F	H, M, R, Hm
#3662 Acetyl-CoA Carboxylase Antibody	W, IP, IHC-P, IF-IC, F	H, M, R, Mk, B, (C, Dm)
#4190 Acetyl-CoA Carboxylase 1 Antibody	W, IP, IF-IC	H, M, R
<b>New</b> #8578 Acetyl-CoA Carboxylase 2 (D5B9) Rabbit mAb	W, IP	H
#6922 AC02 Antibody	W, IF-IC	H, M, R, Mk
<b>New</b> #9189 ACSL1 (D2H5) Rabbit mAb	W, IP	H, M, R, Mk
#4047 ACSL1 Antibody	W, IHC-P	H, M, R
#5295 ADH1 Antibody	W	H, M
#2789 Adiponectin (C45B10) Rabbit mAb	W	M, R, (H)
#3188 Aldolase Antibody	W	H, M, R, Hm, Mk
#3207 AMACR (2A10) Mouse mAb	W, IP, IF-IC	H, M
#2535 Phospho-AMPKα (Thr172) (40H9) Rabbit mAb	W, IP, IHC-P	H, M, R, Hm, Mk, Dm, Sc, (C, B, Pg)
#5256 Phospho-AMPKα (Thr172) (40H9) Rabbit mAb (Biotinylated)	W	H, M, R, Hm, Mk, Dm, Sc
#4188 Phospho-AMPKα (Thr172) (D79.5E) Rabbit mAb	W	H, M, R, Dm, Sc, (B)
#2531 Phospho-AMPKα (Thr172) Antibody	W	H, M, R, Mk, (C, B, Pg)
#2537 Phospho-AMPKα1 (Ser485) (45F5) Rabbit mAb	W	H, M, R, Mk
#4184 Phospho-AMPKα1 (Ser485) Antibody	W	H, M, R, Mk, (C)
#4185 Phospho-AMPKα1 (Ser485)/AMPKα2 (Ser491) Antibody	W	H, M, R, Mk
#5831 AMPKα (D5A2) Rabbit mAb	W, IP	H, M, R, Mk, B
#5832 AMPKα (D63G4) Rabbit mAb	W, IP	H, M, R, Mk, B
#2603 AMPKα (23A3) Rabbit mAb	W	H, M, R, Mk
#6707 AMPKα (23A3) Rabbit mAb (Sepharose Bead Conjugate)	IP	H, M, R, Mk
#2793 AMPKα (F6) Mouse mAb	W	H, M, R, Hm, Mk
#2532 AMPKα Antibody	W, IP	H, M, R, Hm, Mk
#2795 AMPKα1 Antibody	W	H, Mk, (Pg)
#2757 AMPKα2 Antibody	W, IP	H, Mk
#4181 Phospho-AMPKβ1 (Ser108) Antibody	W, IP	H, M, R, Mk
#4186 Phospho-AMPKβ1 (Ser182) Antibody	W	H, M, R, Mk
#4178 AMPKβ1 (71C10) Rabbit mAb	W	H, M, Hm, Mk, Pg
#4182 AMPKβ1 Antibody	W, IP	H, M, R, Mk



**Acetyl-CoA Carboxylase 2 (D5B9) Rabbit mAb #8578:** Western blot analysis of extracts from human adipocytes using #8578.



**Phospho-AMPKα (Thr172) (D79.5E) Rabbit mAb #4188:** Western blot analysis of extracts from SK-N-MC cells, untreated (-) or AICAR-treated (+), using #4188 (upper) or AMPKα Antibody #2532 (lower).

	Application	Reactivity
#4150 AMPKβ1/2 (57C12) Rabbit mAb	W, IHC-P, IF-IC, F	H, M, R, Hm, Mk
#4148 AMPKβ2 Antibody	W, IP	H, M, R, Mk
#4187 AMPKγ1 Antibody	W	H, M, Mk
#2536 AMPKγ2 Antibody	W	H, M, R, Mk, B
#2550 AMPKγ3 Antibody	W	H
<b>XP</b> #3796 α-Amylase (D55H10) XP® Rabbit mAb	W, IP, IHC-P	H, R, (M)
#4017 α-Amylase Antibody	W	R, (H, M)
#2509 AP-2β Antibody	W, IP, IF-IC	H, M, R
#3487 AQP2 Antibody	W	H, M, R, Mk
#4458 ARK5 Antibody	W	H, M, R, Mk, (B)
#8619 Phospho-AS160 (Ser318) (D3D11) Rabbit mAb	W, IP	H, (M, R)
#8730 Phospho-AS160 (Ser588) (D8E4) Rabbit mAb	W, IP	H, M, (R)
#4288 Phospho-AS160 (Thr642) Antibody	W	H, (M, R)
#2670 AS160 (C69A7) Rabbit mAb	W, IP	H, M, R
#2447 AS160 Antibody	W, IP	H
<b>New</b> #8057 ASCT2 (D7C12) Rabbit mAb	W, IP, IF-IC, F	H, M, Mk
#5100 ASCT2 (G11) Antibody	W, IP	H, M, R, Mk
#5345 ASCT2 (V501) Antibody	W, IP, IF-IC, F	H, M, R
#2439 ATGL (30A4) Rabbit mAb	W, IP, IHC-P, IF-IC	M
#2138 ATGL Antibody	W, IP, IHC-P, IF-IC	M, (R)
#4331 Phospho-ATP-Citrate Lyase (Ser455) Antibody	W, IP	H, M, (R)
#4332 ATP-Citrate Lyase Antibody	W	H, M, R, Mk
<b>New</b> #8528 ATP1F1 Antibody	W, IP	H, M, R, Mk
#5460 BRSK2 (D29B6) Rabbit mAb	W, IP	H, M, R
#5734 C1QBP Antibody	W	H, M, R, Mk
<b>New</b> #8612 CA2 Antibody	W, IP	H
#5648 CA9 (D10C10) Rabbit mAb	W, IHC-P	H
#5649 CA9 (D47G3) Rabbit mAb	W, IP, IHC-P	H
<b>XP</b> #5864 CA12 (D75C6) XP® Rabbit mAb	W, IP, F	H
#5865 CA12 (D78E4) Rabbit mAb	W, IP	H, M, R
<b>New</b> #8841 Catalase Antibody	W	H, M, R
#6931 CGTα (D18B6) Rabbit mAb	W, IP	H, M, R, Mk
#2841 Phospho-C/EBPα (Ser21) Antibody	W	H, M, (R, B)

## AMPK Antibody Comparison

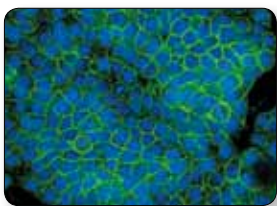
	WB	IP	IHC	Flow	IF
#4188 Phospho-AMPKα (Thr172) (D79.5E) Rabbit mAb	++++	-	N/T	-	-
#2535 Phospho-AMPKα (Thr172) (40H9) Rabbit mAb	+++	-	++	-	-
#2531 Phospho-AMPKα (Thr172) Antibody	+++	-	-	-	-
#2537 Phospho-AMPKα1 (Ser485) (45F5) Rabbit mAb	++	-	N/T	-	-
#4184 Phospho-AMPKα1 (Ser485) Antibody	++	-	-	N/T	N/T
#4185 Phospho-AMPKα1 (Ser485)/AMPKα2 (Ser491) Antibody	++	-	-	N/T	N/T
#2603 AMPKα (23A3) Rabbit mAb	++++	+++	-	++	-
#5831 AMPKα (D5A2) Rabbit mAb	++++	+++	-	-	-
#5832 AMPKα (D63G4) Rabbit mAb	++++	+++	-	-	-
#2532 AMPKα Antibody	++++	+++	-	-	-
#2793 AMPKα (F6) Mouse mAb	+++	-	-	N/T	-
#2795 AMPKα1 Antibody	++	-	-	-	N/T
#2757 AMPKα2 Antibody	++	+++	N/T	N/T	N/T
#4181 Phospho-AMPKβ1 (Ser108) Antibody	++	++	-	-	N/T
#4186 Phospho-AMPKβ1 (Ser182) Antibody	++	++	++	-	-
#4178 AMPKβ1 (71C10) Rabbit mAb	++	-	-	N/T	-
#4182 AMPKβ1 Antibody	++	++	N/T	-	-
#4150 AMPKβ1/2 (57C12) Rabbit mAb	++	-	++	++	++
#4148 AMPKβ2 Antibody	++	++	N/T	N/T	N/T
#4187 AMPKγ1 Antibody	++	-	-	-	-
#2536 AMPKγ2 Antibody	++	-	-	-	-
#2550 AMPKγ3 Antibody	++	N/T	-	-	-

Testing Key: ++++ Very Highly Recommended / +++ Highly Recommended / ++ Recommended / - Not Recommended / N/T Not Tested / N/A Not Applicable

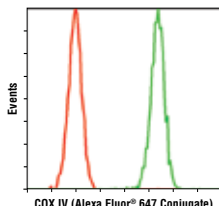


		Application	Reactivity
	#2844 Phospho-C/EBPα (Thr222/226) Antibody	W	H, M, (R)
	#2295 C/EBPα Antibody	W, IF-IC	H, M, R
	#2843 C/EBPα (p42) Antibody	W	H, (M, R)
	#3081 Phospho-C/EBPβ (Ser105) Antibody (Rat Specific)	W	R
	#3084 Phospho-C/EBPβ (Thr235) Antibody	W	H, M, (B, Pg)
	#3087 C/EBPβ (LAP) Antibody	W	H, M, (R)
	#3082 C/EBPβ Antibody	W	R
	#2318 C/EBPδ Antibody	W	M, R
	#4454 CCTα Antibody	W, IP	H
	#4850 COX IV (3E11) Rabbit mAb	W, IP, IHC-P, IHC-F, IF-IC, F	H, R, Mk, Z, B, Pg
	#4853 COX IV (3E11) Rabbit mAb (Alexa Fluor® 488 Conjugate)	IF-F, IF-IC, F	H, R, Mk, Z, B, Pg
<b>New</b>	#7561 COX IV (3E11) Rabbit mAb (Alexa Fluor® 647 Conjugate)	IF-IC, F	H, R, Mk, Z, B, Pg
	#5247 COX IV (3E11) Rabbit mAb (HRP Conjugate)	W	H, Mk
	#4844 COX IV Antibody	W, IP, IHC-P, IF-IC, F	H, M, R, Mk, B
<b>New</b>	#8684 CtBP1 (D2D6) Rabbit mAb	W, IP, IHC-P, IF-IC	H, M, Mk
	#2033 DHCR24/Seladin-1 (C59D8) Rabbit mAb	W, IP, IHC-P	H, M
	#5556 DLST Antibody	W, IP	H, M, R, Mk
	#5672 DYRK1B (D40D1) Rabbit mAb	W, IP	H, M, R, (Mk)
	#2703 DYRK1B Antibody	W, IP	H, M, R, Mk
	#3810 Enolase-1 Antibody	W, IP	H, M, R, Mk
	#9536 Enolase-2 Antibody	W	H, M
	#5342 ENPP1 (D37B7) Rabbit mAb	W	H, (M, R)
	#2061 ENPP1 (L520) Antibody	W, IP	H, R, (M)
	#2070 ENPP1 Antibody (Human Specific)	W	H
	#3829 FAAH1 (C84F1) Rabbit mAb	W, IP, IHC-P	M, R
	#2942 FAAH1 (L14B8) Mouse mAb	W, IP	H, M
	#9179 FAAH1 Antibody (Rat Specific)	W, IP	R
<b>XP</b>	#3544 FABP4 (D25B3) XP® Rabbit mAb	W, IP, IF-IC	M, (H)
	#2120 FABP4 Antibody	W	M
	#3180 Fatty Acid Synthase (C20G5) Rabbit mAb	W, IP, IHC-P, IHC-F, IF-IC	H, M, R, (B)
	#3189 Fatty Acid Synthase Antibody	W	H, M
	#5258 Fetuin A (F180) Antibody	W, IP	H
	#3998 FTH1 Antibody	W	H, M, R, Mk
<b>XP</b>	#5843 GAD2 (D5G2) XP® Rabbit mAb	W, IP, IF-F	H, M, R
<b>XP</b>	#5174 GAPDH (D16H11) XP® Rabbit mAb	W, IHC-P, IF-IC	H, M, R, Mk
	#2118 GAPDH (14C10) Rabbit mAb	W, IHC-P, IF-IC, F	H, M, R, Mk
	#3906 GAPDH (14C10) Rabbit mAb (Alexa Fluor® 488 Conjugate)	IF-IC, F	H, M, R, Mk
	#3964 GAPDH (14C10) Rabbit mAb (Alexa Fluor® 555 Conjugate)	IF-IC	H, M, R, Mk
	#3907 GAPDH (14C10) Rabbit mAb (Alexa Fluor® 647 Conjugate)	IF-IC, F	H, M, R, Mk
	#5014 GAPDH (14C10) Rabbit mAb (Biotinylated)	W, IF-IC, F	H, M, R, Mk
	#3683 GAPDH (14C10) Rabbit mAb (HRP Conjugate)	W	H, M, R, Mk
	#4595 GATA-2 Antibody	W	H, M, R
	#5322 GFAT1 (D12F4) Rabbit mAb	W, IP	H, R
	#3818 GFAT1 Antibody	W, IP	H
	#6917 GFAT2 (D40C7) Rabbit mAb	W	H
<b>XP</b>	#8233 Glucagon (D16G10) XP® Rabbit mAb	IHC-P, IHC-F, IF-F	H, M, R
	#2760 Glucagon Antibody	IHC-P, IHC-F, IF-F	H, M, R

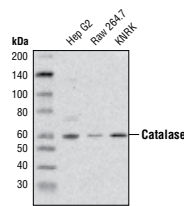
		Application	Reactivity
	#8866 Glucose-6-Phosphate Dehydrogenase Antibody	W	H, M, R, Mk
	#2213 Glut4 (1F8) Mouse mAb	W	H, M, R
	#3891 Phospho-Glycogen Synthase (Ser641) Antibody	W, IP, IHC-P	H, M, R
	#3886 Glycogen Synthase (15B1) Rabbit mAb	W, IP, IHC-P	H, M, R
	#3893 Glycogen Synthase Antibody	W, IP, F	H, M, R
	#3286 GPX1 (C8C4) Rabbit mAb	W	H
	#3206 GPX1 Antibody	W, IP	H
	#2024 Hexokinase I (C35C4) Rabbit mAb	W, IP, IHC-P, IF-IC	H, M
	#3689 Hexokinase I (C35C4) Rabbit mAb (Alexa Fluor® 488 Conjugate)	IF-IC, F	H, M
	#3540 Hexokinase I (C35C4) Rabbit mAb (Alexa Fluor® 647 Conjugate)	IF-IC, F	H, M
	#2804 Hexokinase I Antibody	W	H, Mk, (B)
	#2867 Hexokinase II (C64G5) Rabbit mAb	W, IHC-P, IF-IC	H, M, R, Mk
	#2106 Hexokinase II Antibody	W	H, Mk
<b>New XP</b>	#8186 FoxA2/HNF3β (D56D6) XP® Rabbit mAb	W, IP, IF-IC	H, M, R
	#3143 FoxA2/HNF3β Antibody	W, IP, IF-IC	H, (M, R)
	#3113 HNF4α (C11F12) Rabbit mAb	W, IHC-P, IF-IC	H
	#3117 HNF4α (G162) Antibody	W	H
	#4139 Phospho-HSL (Ser563) Antibody	W, IF-IC	M, (H, R)
	#4137 Phospho-HSL (Ser565) Antibody	W, IF-IC	M, (H, R)
	#4126 Phospho-HSL (Ser660) Antibody	W, IF-IC	M, R
	#4107 HSL Antibody	W, IP, IF-IC	M, (H)
<b>New</b>	#8137 IDH1 (D2H1) Rabbit mAb	W, IP, IF-IC, F	H, M, R, Mk
	#3997 IDH1 Antibody	W	H, M
	#4568 Phospho-IGF-I Receptor β (Tyr980) (C14A11) Rabbit mAb	W	H, M, R
	#3021 Phospho-IGF-I Receptor β (Tyr1131)/Insulin Receptor β (Tyr1146) Antibody	W, IP	H, M, R, (B)
	#3918 Phospho-IGF-I Receptor β (Tyr1135) (DA7A8) Rabbit mAb	W	H, M, (R)
	#3024 Phospho-IGF-I Receptor β (Tyr1135/1136)/Insulin Receptor β (Tyr1150/1151) (19H7) Rabbit mAb	W	H, M, R, (B)
<b>New XP</b>	#9750 IGF-I Receptor β (D23H3) XP® Rabbit mAb	W, IF-IC, F	H, M, R, Mk
	#3018 IGF-I Receptor β (111A9) Rabbit mAb	W, IP	H, M, R, Mk
	#3027 IGF-I Receptor β Antibody	W, IP, IHC-P	H, M, R, Mk
	#3922 IGFBP-2 Antibody	W, IP, IHC-P	H
	#3014 Insulin (C27C9) Rabbit mAb	IHC-P, IF-F, IF-IC, F	H, M, R
<b>New</b>	#8138 Insulin (L6B10) Mouse mAb	W, IP, IF-F	R, (H, M)
	#4590 Insulin Antibody	IHC-P, IF-F, IF-IC, F	H, M, R
	#4593 C-Peptide Antibody	IHC-P, IHC-F, IF-F, IF-IC	H, M, R
	#3026 Phospho-Insulin Receptor β (Tyr1345) (14A4) Rabbit mAb	W	H
	#3023 Phospho-Insulin Receptor β (Tyr1361) (84B2) Rabbit mAb	W	H
	#3025 Insulin Receptor β (4B8) Rabbit mAb	W, IP	H, M, R
	#3020 Insulin Receptor β (L55B10) Mouse mAb	W, IP	H, M, R
<b>XP</b>	#6918 IRAP (D7C5) XP® Rabbit mAb	W, IP, IF-IC	H, M, R, Mk
<b>New</b>	#9876 IRAP (3E1) Mouse mAb	W, IF-IC	M, (R)
	#3808 IRAP Antibody	W, IP, IF-IC	H, M, (R)
	#2491 Phospho-IRS-1 (Ser302) (34C7) Rabbit mAb	W	H, M



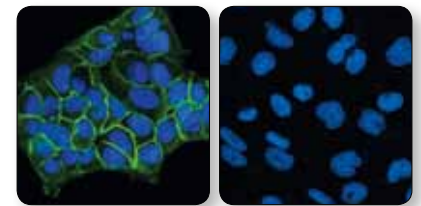
**ASCT2 (D7C12) Rabbit mAb #8057:** Confocal IF analysis of HT-29 cells using #8057 (green). Blue pseudocolor = DRAQ5® #4084 (fluorescent DNA dye).



**COX IV (3E11) Rabbit mAb (Alexa Fluor® 647 Conjugate) #7561:** Flow cytometric analysis of HeLa cells using #7561 (green) compared to concentration-matched Rabbit (DA1E) mAb IgG XP® Isotype Control (Alexa Fluor® 647 Conjugate) #2985 (red).

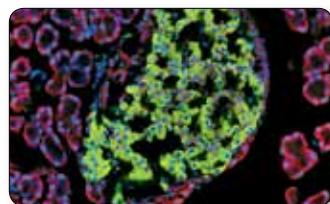


**Catalase Antibody #8841:** Western blot analysis of extracts from various cell lines using #8841.

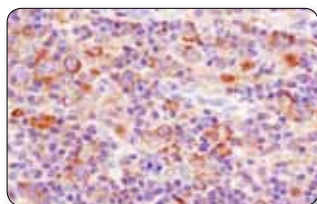


**IGF-I Receptor β (D23H3) XP® Rabbit mAb #9750:** Confocal IF analysis of MCF7 (left) and SK-UT-1 (right) cells using #9750 (green). Blue pseudocolor = DRAQ5® #4084 (fluorescent DNA dye).

		Application	Reactivity
#2384	Phospho-IRS-1 (Ser302) Antibody	W	H, M, R, (Pg)
#2381	Phospho-IRS-1 (Ser307) Antibody	W, IP	H, M, R
#5610	Phospho-IRS-1 (Ser318) (D51C3) Rabbit mAb	W, IP	H, M, (R)
#2580	Phospho-IRS-1 (Ser332/336) Antibody	W	R, (H, M)
#3203	Phospho-IRS-1 (Ser612) (C15H5) Rabbit mAb	W	H, M, R
#3193	Phospho-IRS-1 (Ser612) (L7B8) Mouse mAb	W	H, M, R
#2386	Phospho-IRS-1 (Ser612) Antibody	W	H, M, R
#2388	Phospho-IRS-1 (Ser636/639) Antibody	W	H, M, R
#2389	Phospho-IRS-1 (Ser789) Antibody	W	R, (M)
#3070	Phospho-IRS-1 (Tyr895) Antibody	W	R, (H, M)
#2385	Phospho-IRS-1 (Ser1101) Antibody	W, IP	H, M, R
#3066	Phospho-IRS-1 (Tyr1222) Antibody	W	R, (H, M)
#2390	IRS-1 (59G8) Rabbit mAb	W	H, M, R, (Pg)
#3407	IRS-1 (D23G12) Rabbit mAb	W, IP	H, M, R, Mk
#3194	IRS-1 (L3D12) Mouse mAb	W	H, M, R, Mk
#2382	IRS-1 Antibody	W, IP	H, M, R
#3089	IRS-2 (L1326) Antibody	W, IP	H, M, R
#4502	IRS-2 Antibody	W	H, M, R
#5347	LAT1 Antibody	W, IP	H
#3582	LDHA (C4B5) Rabbit mAb	W, IHC-P, IF-IC	H, Mk
#3558	LDHA/LDHC (C28H7) Rabbit mAb	W, IHC-P	H, M, R, Mk
#2012	LDHA Antibody	W	H, M, R, Mk
#5195	Lipin 1 Antibody	W, IP, IF-IC	H, M
#3055	Phospho-LKB1 (Ser334) Antibody	W	H, (M)
#3482	Phospho-LKB1 (Ser428) (C67A3) Rabbit mAb	W	H, M, R, Mk
#3050	LKB1 (27D10) Rabbit mAb	W, IP	H, R, Mk
#3047	LKB1 (D60C5) Rabbit mAb	W	H, M, R, Mk
#3319	MARK1 Antibody	W	H, M, R
#9118	MARK2 Antibody	W	H, M, R, (Mk)
#8610	MDH2 Antibody	W	H, M, R
#2716	MO25α/CAB39 (C49D8) Rabbit mAb	W, IP	H, M, R, Mk
#4446	MRP2 (R260) Antibody	W, IP, IF-IC	H
#4158	MTAP Antibody	W, IP	H, M, R, Mk
#2833	NeuroD Antibody	W, IP	H, (M, R)
#5058	NPC1L1 Antibody	W, IP	H
<b>New</b> #9875	O-GlcNAc (CTD110.6) Mouse mAb	W	All
#6923	PANK2 Antibody (Mouse Specific)	W, IP	M
#3086	PASK (C70B2) Rabbit mAb	W, IP	H, M, R
#6924	PCK2 Antibody	W, IP, IF-IC	H, M, R, Mk
#3820	PDHK1 (C47H1) Rabbit mAb	W, IP	H, M, R, Mk
<b>XP</b> #5679	Pdx1 (D59H3) XP <sup>®</sup> Rabbit mAb	W, IP, IF-IC	R, (H)
#2437	Pdx1 Antibody	W, IP, IF-F, IF-IC	M, R, (H)
#2776	Phospho-PEA-15 (Ser104) Antibody	W, IP	H, R, (M)
#2780	PEA-15 Antibody	W, IP	H, M, R, Mk
<b>XP</b> #9349	Perilipin (D1D8) XP <sup>®</sup> Rabbit mAb	W, IP, IHC-P, IF-F, IF-IC	H, M
#3470	Perilipin (D418) Antibody	W, IHC-P, IF-IC	M, (H)
#3467	Perilipin (K117) Antibody	W, IF-IC	M, (H, Pg)
#5412	PFKP Antibody	W, IP	H, Mk
#7534	PGAM1 Antibody	W	H, M, R, Mk
#4259	PGC1α Antibody	W	M, (H, R)
#3190	PKM1/2 (C103A3) Rabbit mAb	W, IF-IC	H, M, R, Mk
#3106	PKM1/2 (C5E6) Rabbit mAb	W, IP	H, M, R
#3186	PKM1/2 Antibody	W	H, M, R, (C, X)



**Insulin (L6B10) Mouse mAb #8138:** Confocal IF analysis of rat pancreas using #8138 (green) and S6 Ribosomal Protein (5G10) Rabbit mAb #2217 (red). Blue pseudocolor = DRAQ5<sup>®</sup> #4084 (fluorescent DNA dye).



**PKM2 (D78A4) XP<sup>®</sup> Rabbit mAb #4053:** IHC analysis of paraffin-embedded human lymphoma using #4053.

		Application	Reactivity
#3827	Phospho-PKM2 (Tyr105) Antibody	W	H, M, R, Mk
<b>XP</b> #4053	PKM2 (D78A4) XP <sup>®</sup> Rabbit mAb	W, IP, IHC-P, IF-IC	H, M, R, Mk
#3198	PKM2 Antibody	W, IHC-P, IHC-F	H, M, R, Mk
#2443	PPARγ (81B8) Rabbit mAb	W, IP, IF-IC	H, M, (R)
#2435	PPARγ (C26H12) Rabbit mAb	W, IHC-P, IF-IC	H, M, (R)
#2430	PPARγ (D69) Antibody	W, IP	H, M, (R)
<b>New</b> #8499	Prdx1 (D5G12) Rabbit mAb	W, IP	H, M, R, Mk
#8732	Prdx1 Antibody	W, IP	H, M, Mk
#5311	PTP1B Antibody	W	H
#3205	Pyruvate Dehydrogenase (C54G1) Rabbit mAb	W, IHC-P	H, M, R, Mk
#2784	Pyruvate Dehydrogenase Antibody	W, IF-IC	H, M, R, Mk
#2083	Phospho-Raptor (Ser792) Antibody	W	H, M, R
#2280	Raptor (24C12) Rabbit mAb	W, IP	H, M, R, Mk
#5382	Raptor (24C12) Rabbit mAb (Sepharose Bead Conjugate)	IP	H, M, R, Mk
#2129	Phospho-Rev-erba (Ser55/59) Antibody	W	H, (M, R, B)
#2794	SCD1 (C12H5) Rabbit mAb	W, IP, IHC-P, IF-IC	M
#2438	SCD1 (M38) Antibody	W, IF-IC	M, (H)
#2283	SCD1 (R347) Antibody	W, IF-IC	M, (H)
#5839	SDHA Antibody	W, IF-IC	H, M, R, Mk
#5599	Phospho-SGK1 (Ser78) (D36D11) Rabbit mAb	W, IP	H, (M, R, Mk)
#3271	Phospho-SGK (Ser78) Antibody	W	H, (M, R)
#3272	SGK Antibody	W	H, (M, R)
#5042	SGLT1 Antibody	W	H, (H, R)
#6919	SIK2 (D28G3) Rabbit mAb	W, IP	H, M
#2327	Phospho-SirT1 (Ser27) Antibody	W	H
#2314	Phospho-SirT1 (Ser47) Antibody	W, IP, IF-IC, F	H
#2496	SirT1 (C14H4) Rabbit mAb	W, IP	H
#2493	SirT1 (D739) Antibody	W, IP, IF-IC	H, Mk
#2310	SirT1 Antibody	W	H
#2627	SirT3 (C73E3) Rabbit mAb	W, IP, IHC-P	H, R, Mk
#4100	SNARK/NUAK2 Antibody	W	M, (H, R)
<b>New</b> #9874	Phospho-SREBP-1c (Ser372) Antibody	W	H, (M, R)
<b>XP</b> #8449	StAR (D10H12) XP <sup>®</sup> Rabbit mAb	W, IP, IF-IC	H, M, R
<b>New</b> #8071	Succinyl-CoA Synthetase (D8A11) Rabbit mAb	W, IP, IF-IC	H, M, R, Mk
#5557	Succinyl-CoA Synthetase Antibody	W, IP	H, M, R
#2400	Synip (C51G6) Rabbit mAb	W	H, M, R
#6927	Phospho-TBC1D1 (Thr590) Antibody	W	M, (R)
#6928	Phospho-TBC1D1 (Ser660) Antibody	W	M, (R)
#6929	Phospho-TBC1D1 (Ser700) Antibody	W	M, (R)
#5929	TBC1D1 (G689) Antibody	W, IP	M, (H)
#4629	TBC1D1 (V796) Antibody	W, IP	M
#2429	Thioredoxin 1 (C63C6) Rabbit mAb	W, IHC-P	H, M, R
#3359	Phospho-Torc1/Crtc1 (Ser151) Antibody	W	H, (M, R)
#2587	Torc1 (C71D11) Rabbit mAb	W	M, R, (H)
#2501	Torc1 Antibody	W	M, (H)
#3826	Torc2 Antibody	W	H
#2720	Torc3 (C35G4) Rabbit mAb	W	H, M, R, Mk
#2768	Torc3 Antibody	W	H, M, R
<b>New</b> #8616	Transketolase Antibody	W	H, M, R, Mk
#6925	TRXR1 Antibody	W	H, M, R, Mk
#2049	Tug Antibody	W, IP	H, M, R, Mk
#9319	Tyrosinase (T311) Mouse mAb (IHC Specific)	IHC-P	H
#4371	UGT Antibody	W	H, M, R
#5937	VMS1 (D10E6) Rabbit mAb	W	M

**Applications:** W=Western Blot IP=Immunoprecipitation IHC=Immunohistochemistry F=Flow Cytometry IF=Immunofluorescence (-IC Immunocytochemistry, -P Paraffin, -F Frozen)

**Reactivity:** H=Human M=Mouse R=Rat Mk=Monkey Pg=Pig Sc=S. cerevisiae C=Chicken Hm=Hamster B=Bovine Dm=D. melanogaster X=Xenopus Z=Zebrafish Dg=Dog Species enclosed in parentheses are predicted to react based on 100% sequence homology.

**USA Headquarters**

Cell Signaling Technology, Inc.  
Tel: 978-867-2300  
E-mail: info@cellsignal.com  
www.cellsignal.com

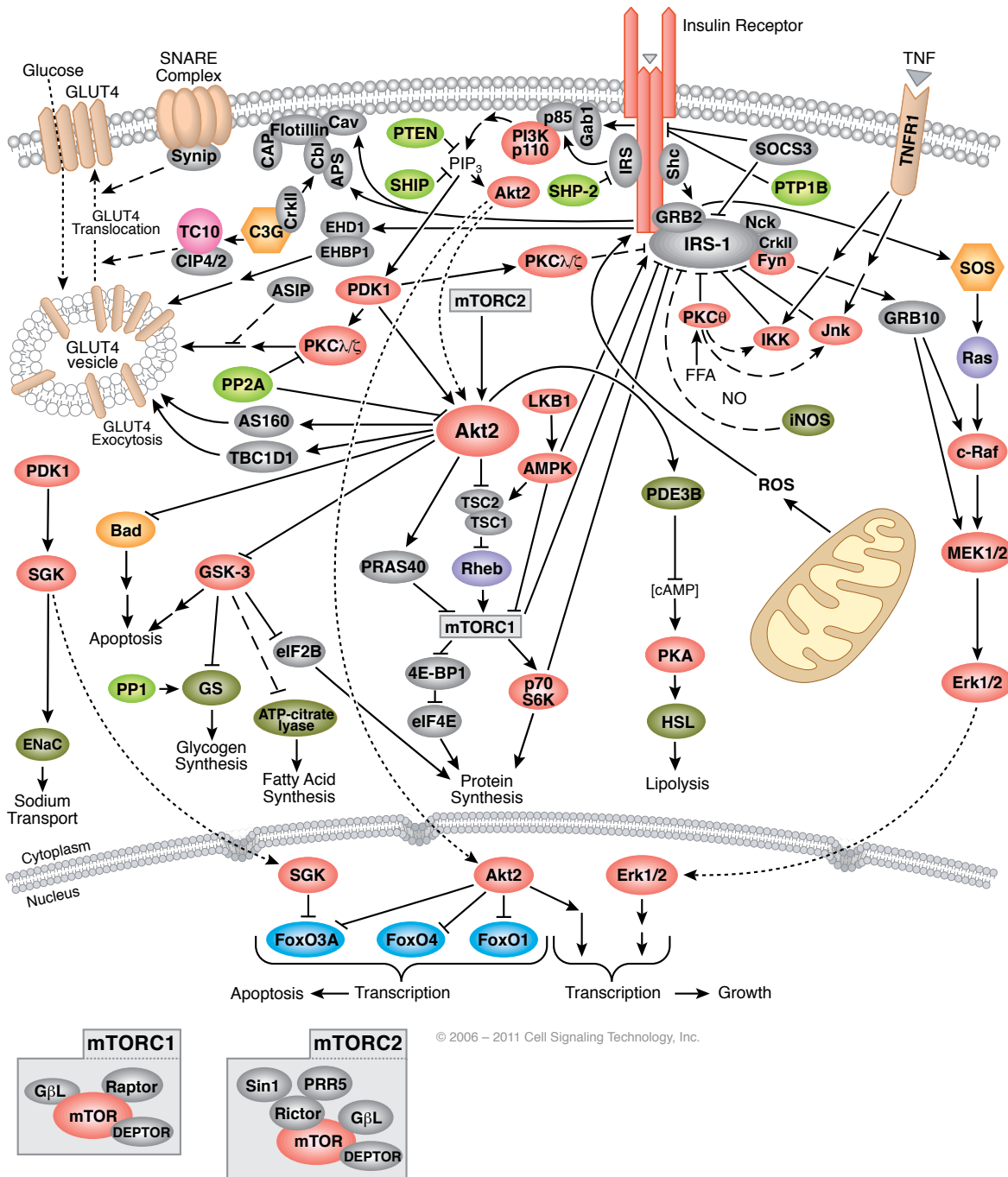
**International Subsidiaries**

Cell Signaling Technology (China) Limited  
Tel: (86) 21-5835-6288  
E-mail: info@cst-c.com.cn  
www.cellsignal.com

Cell Signaling Technology Europe  
Tel: +31 (0)71 568 1060  
E-mail: info@cellsignal.eu  
www.cellsignal.com

Cell Signaling Technology Japan, K.K.  
Tel: 03-3295-16300  
E-mail: info@cstj.co.jp  
www.cstj.co.jp

**Insulin Receptor Signaling**



© 2006 – 2011 Cell Signaling Technology, Inc.