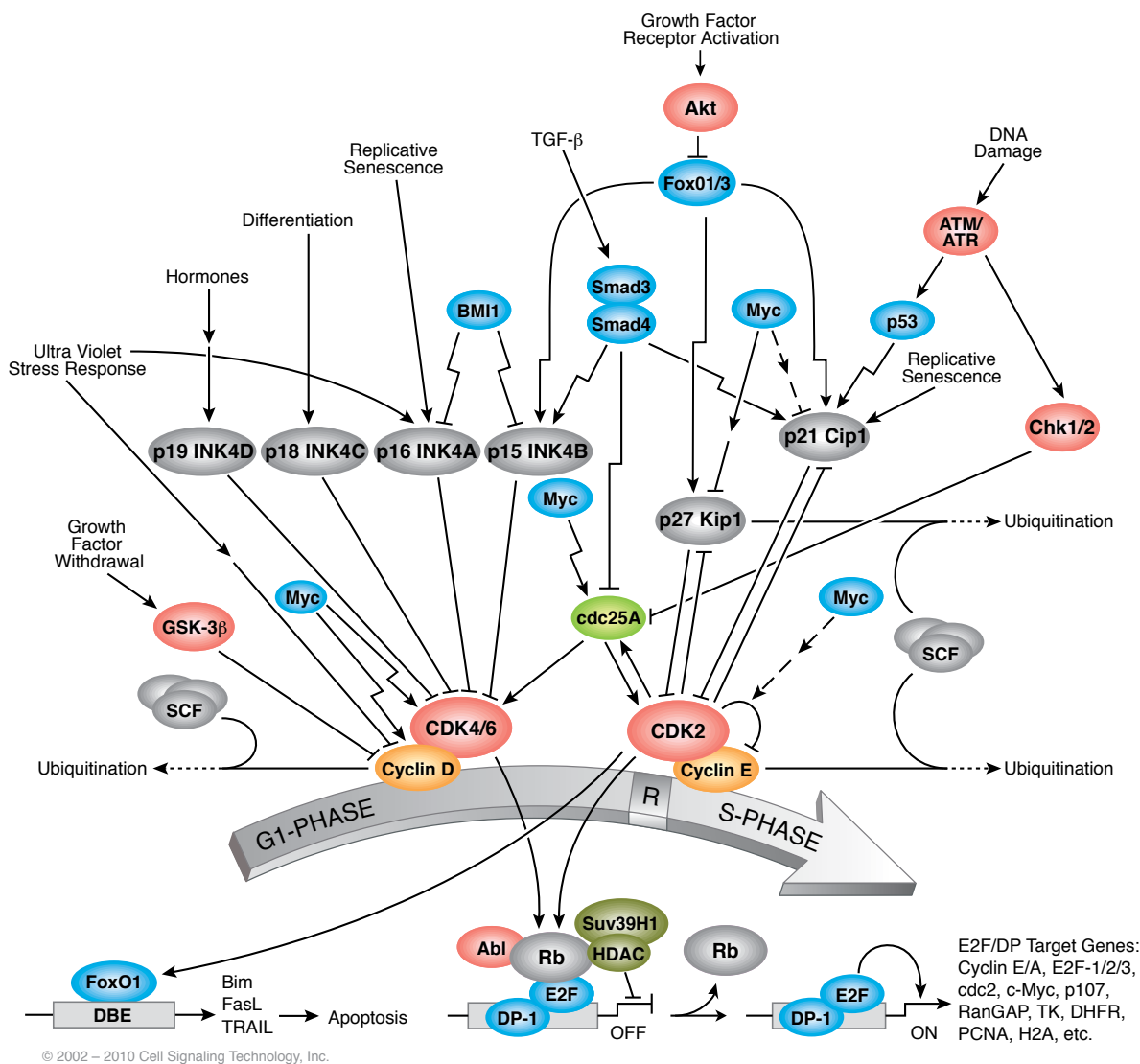


Antibodies and Related Reagents for Cell Cycle/Checkpoint Control

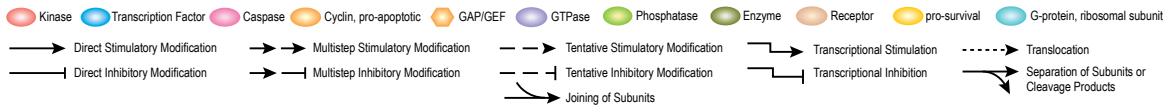
Product Pathways

- Motif Antibodies
- Chromatin Regulation
- MAP Kinase Signaling
- Apoptosis and Autophagy
- PI3K / Akt Signaling
- Cellular Metabolism
- Translational Control
- Development and Differentiation
- Stem Cell and Lineage Markers
- Ca²⁺, cAMP, and Lipid Signaling
- >Cell Cycle/Checkpoint Control
- NF-κB Signaling
- Lymphocyte Signaling
- Neuroscience
- Tyrosine Kinases and Docking Proteins
- Angiogenesis
- Nuclear Receptors and Phosphatases
- Cytoskeletal Signaling
- Adhesion
- Protein Folding and Stability

Cell Cycle Control: G1/S Checkpoint

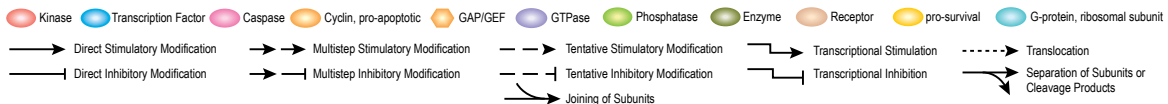
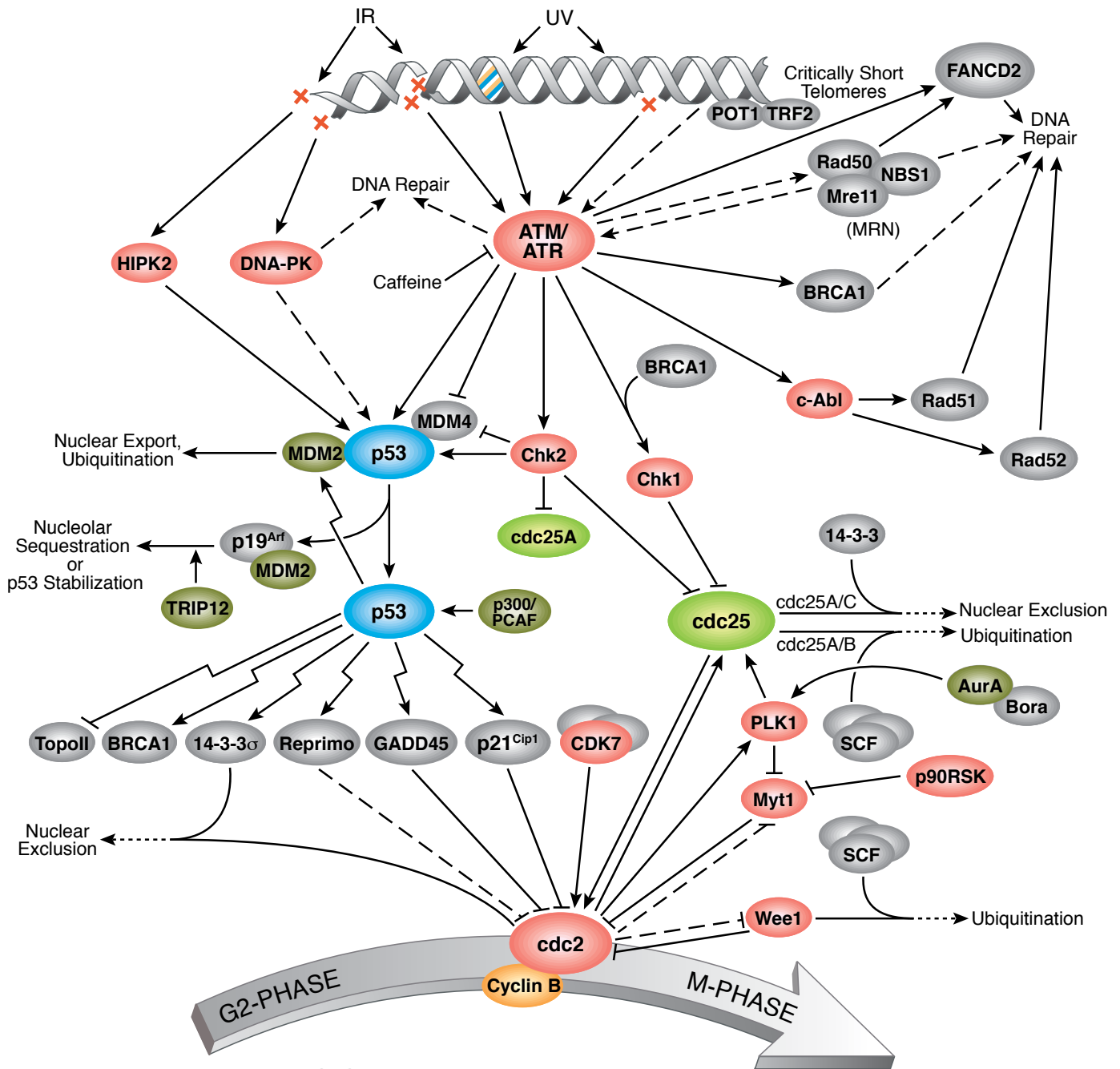


For Research Use Only.
Not For Use In
Diagnostic Procedures.



Cell Cycle/Checkpoint Control

Cell Cycle Control: G2/M DNA Damage Checkpoint



Antibody Sampler Kits

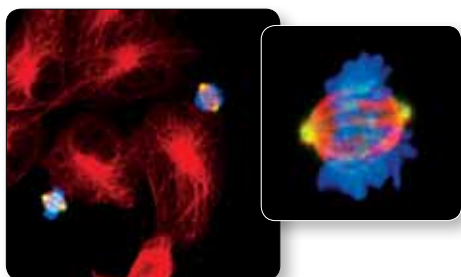
- #3875 Aurora Antibody Sampler Kit
- #9555 cdc25C Antibody Sampler Kit
- #9868 CDK Antibody Sampler Kit
- #9932 Cell Cycle Regulation Antibody Sampler Kit
- #9870 Cell Cycle Regulation Antibody Sampler Kit II
- #9917 Cell Cycle/Checkpoint Antibody Sampler Kit
- #9931 Phospho-Chk1/2 Antibody Sampler Kit
- #9869 Cyclin Antibody Sampler Kit
- #9867 Cyclin Dependent Kinase Inhibitor Antibody Sampler Kit
- #9947 DNA Damage Antibody Sampler Kit
- New** #8341 DNA Replication Antibody Sampler Kit
- #9653 Double Strand Breaks (DSB) Repair Antibody Sampler Kit
- #9786 Mismatch Repair Antibody Sampler Kit
- #8344 MRN Complex Antibody Sampler Kit
- #9919 Phospho-p53 Antibody Sampler Kit
- #9969 Rb Antibody Sampler Kit
- #8342 UV Induced DNA Damage Response Antibody Sampler Kit

Antibodies

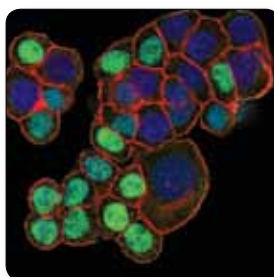
- #2674 Phospho-53BP1 (Ser25/29) Antibody
- #3428 Phospho-53BP1 (Thr543) Antibody
- #2675 Phospho-53BP1 (Ser1778) Antibody
- #4908 53BP1 (P550) Antibody
- #4937 53BP1 Antibody
- #3208 AP-2α Antibody
- #2320 AP-2γ Antibody
- New** #9499 APC6 (D8D8) Rabbit mAb
- #4128 Ape1 Antibody
- #2851 Phospho-(Ser/Thr) ATM/ATR Substrate Antibody
- #5883 Phospho-ATM (Ser1981) (D6H9) Rabbit mAb
- #4526 Phospho-ATM (Ser1981) (10H11.E12) Mouse mAb
- #2873 ATM (D2E2) Rabbit mAb
- #2853 Phospho-ATR (Ser428) Antibody
- #2790 ATR Antibody
- #2737 ATRIP Antibody
- XP** #2914 Phospho-Aurora A (Thr288)/Aurora B (Thr232)/Aurora C (Thr198) (D13A11) XP® Rabbit mAb
- XP** #2995 Phospho-Aurora A (Thr288)/Aurora B (Thr232)/Aurora C (Thr198) (D13A11) XP® Rabbit mAb (Biotinylated)
- #3079 Phospho-Aurora A (Thr288) (C39D8) Rabbit mAb
- #4718 Aurora A/AIK (1G4) Rabbit mAb
- #3092 Aurora A/AIK Antibody
- #3094 Aurora B/AIM1 Antibody
- #4578 BACH1/BRIP1 Antibody
- #2742 BLM Antibody
- #9009 Phospho-BRCA1 (Ser1524) Antibody
- #9010 BRCA1 Antibody
- #9012 BRCA2 Antibody
- #5848 Brd2 (D89B4) Rabbit mAb

- #5292 BrdU (Bu20a) Mouse mAb
- #5935 BRSK1 (D10F2) Rabbit mAb
- #5460 BRSK2 (D29B6) Rabbit mAb
- #5421 Bub1b (D32E8) Rabbit mAb
- #4116 Bub1b Antibody
- #8195 Bub3 (D4F9) Rabbit mAb
- #8194 Bub3 (D8G6) Rabbit mAb
- #3049 Bub3 Antibody
- #2543 Phospho-cdc2 (Thr14) Antibody
- #4539 Phospho-cdc2 (Tyr15) (10A11) Rabbit mAb
- #9111 Phospho-cdc2 (Tyr15) Antibody
- #9114 Phospho-cdc2 (Thr161) Antibody
- #9112 cdc2 Antibody
- #9116 cdc2 (POH1) Mouse mAb
- #9110 PhosphoPlus® cdc2 (Tyr15) Antibody Kit
- #3387 Cdc6 (C42F7) Rabbit mAb
- #3603 Cdc7 Antibody
- New** #8038 Phospho-CDC20 (Ser51) Antibody
- #4823 CDC20 Antibody
- #3852 cdc25A Antibody
- #9525 cdc25B Antibody
- #9527 Phospho-cdc25C (Thr48) Antibody
- #9529 Phospho-cdc25C (Ser198) Antibody
- #4901 Phospho-cdc25C (Ser216) (63F9) Rabbit mAb
- #4688 cdc25C (5H9) Rabbit mAb
- #3618 CDC37 (V297) Antibody
- #3673 Cdc45 Antibody
- New** #8126 CDC73 (D38E12) Rabbit mAb
- #3644 CDC73 (A264) Antibody
- #3645 CDC73 (D410) Antibody
- #2561 Phospho-CDK2 (Thr160) Antibody
- #2546 CDK2 (78B2) Rabbit mAb
- #5884 Phospho-CDK4 (Thr172) Antibody
- #2906 CDK4 (DCS156) Mouse mAb
- #2506 CDK5 Antibody
- #3136 CDK6 (DCS83) Mouse mAb
- #2916 CDK7 (M01) Mouse mAb
- #2090 CDK7 Antibody
- #4101 CDK8 (G398) Antibody
- #4106 CDK8 (P455) Antibody
- #2549 Phospho-CDK9 (Thr186) Antibody
- #2316 CDK9 (C12F7) Rabbit mAb
- New** #8064 CDT1 (D10F11) Rabbit mAb
- #3386 CDT1 Antibody
- #9894 CEND1 Antibody
- #2187 Phospho-CENP-A (Ser7) Antibody
- #2048 CENP-A (C51A7) Rabbit mAb (Mouse Specific; IF Preferred)
- #2047 CENP-A (C5H3) Rabbit mAb (Mouse Specific)
- #2186 CENP-A Antibody
- #6904 CHFR (D40H6) Rabbit mAb
- #4297 CHFR Antibody

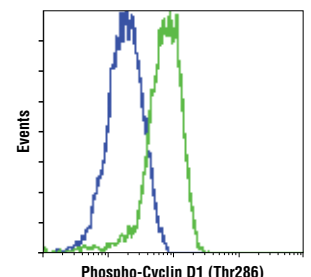
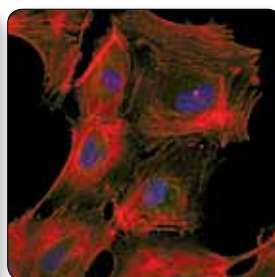
- #2347 Phospho-Chk1(Ser280) Antibody
- #2349 Phospho-Chk1 (Ser296) Antibody
- #8191 Phospho-Chk1 (Ser317) (D7H2) Rabbit mAb
- #2344 Phospho-Chk1 (Ser317) Antibody
- #2348 Phospho-Chk1 (Ser345) (133D3) Rabbit mAb
- #2341 Phospho-Chk1 (Ser345) Antibody
- #2360 Chk1 (2G1D5) Mouse mAb
- #2345 Chk1 Antibody
- #2666 Phospho-Chk2 (Ser19) Antibody
- #2665 Phospho-Chk2 (Ser33/35) Antibody
- #2197 Phospho-Chk2 (Thr68) (C13C1) Rabbit mAb
- #2661 Phospho-Chk2 (Thr68) Antibody
- #2669 Phospho-Chk2 (Ser516) Antibody
- #3440 Chk2 (1C12) Mouse mAb
- #2662 Chk2 Antibody
- #2656 CK2α Antibody
- #2800 Claspin Antibody
- #6895 COPS5 Antibody
- #4656 Cyclin A (BF683) Mouse mAb
- #4133 Phospho-Cyclin B1 (Ser133) (9E3) Rabbit mAb
- #4131 Phospho-Cyclin B1 (Ser147) Antibody
- #4138 Cyclin B1 Antibody
- #4135 Cyclin B1 (V152) Mouse mAb
- #4112 Cyclin B1 (V152) Mouse mAb (Alexa Fluor® 488 Conjugate)
- #4118 Cyclin B1 (V152) Mouse mAb (Alexa Fluor® 647 Conjugate)
- XP** #3300 Phospho-Cyclin D1 (Thr286) (D29B3) XP® Rabbit mAb
- #2921 Phospho-Cyclin D1 (Thr286) Antibody
- #2978 Cyclin D1 (92G2) Rabbit mAb
- #2926 Cyclin D1 (DCS6) Mouse mAb
- #2922 Cyclin D1 Antibody
- #3741 Cyclin D2 (D52F9) Rabbit mAb
- #2924 Cyclin D2 Antibody
- #2936 Cyclin D3 (DCS22) Mouse mAb
- #4136 Phospho-Cyclin E (Thr62) Antibody
- #4129 Cyclin E (HE12) Mouse mAb
- #4132 Cyclin E2 Antibody
- #2927 Cyclin H Antibody
- #8192 DDX3 (D19B4) Rabbit mAb
- #2635 DDX3 Antibody
- #4602 DNA-PK Antibody
- New** #8143 DYRK2 Antibody
- #3742 E2F-1 Antibody
- #5166 EAPP (1E4) Mouse mAb
- #2164 EB-1 (1A11/4) Mouse mAb
- #4203 Eg5 (4H3-1F12) Mouse mAb
- #7625 Eg5 Antibody
- #5437 ERCC1 (D61F5) Rabbit mAb
- #3885 ERCC1 Antibody
- #4945 Phospho-FANCD2 (Ser222) Antibody
- #2746 FEN-1 Antibody
- XP** #5436 FoxM1 (D12D5) XP® Rabbit mAb



Phospho-Aurora A (Thr288)/Aurora B (Thr232)/Aurora C (Thr198) (D13A11) XP® Rabbit mAb #2914: Confocal IF analysis of HT-1080 cells using #2914 (green), β-Tubulin (9F3) Rabbit mAb (Alexa Fluor® 555 Conjugate) #2116 (red), and Phospho-Histone H3 (Ser10) (6G3) Mouse mAb #9706 (blue).



CDT1 (D10F11) Rabbit mAb #8064: Confocal IF analysis of HT-29 and HUVEC cells using #8064 (green). Actin filaments were labeled with DY-554 phalloidin (red). Blue pseudocolor = DRAQ5® #4084 (fluorescent DNA dye).

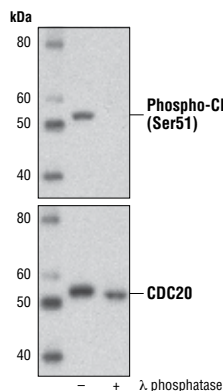


Phospho-Cyclin D1 (Thr286) (D29B3) XP® Rabbit mAb #3300: Flow cytometric analysis of HT-1080 cells, untreated (blue) or MG132-treated (green), using #3300.

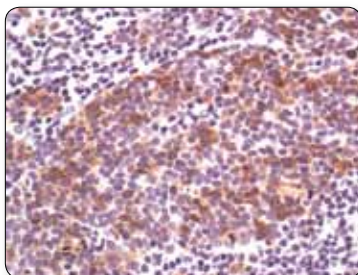
#3948	FoxM1 Antibody
#3518	GADD45 α Antibody
#5165	Geminin Antibody
XP #3377	Phospho-Histone H3 (Ser10) (D2C8) XP [®] Rabbit mAb
XP #3465	Phospho-Histone H3 (Ser10) (D2C8) XP [®] Rabbit mAb (Alexa Fluor [®] 488 Conjugate)
XP #3642	Phospho-Histone H3 (Ser10) (D2C8) XP [®] Rabbit mAb (Biotinylated)
#9706	Phospho-Histone H3 (Ser10) (6G3) Mouse mAb
#9701	Phospho-Histone H3 (Ser10) Antibody
#9713	Phospho-Histone H3 (Ser28) Antibody
#4944	HR6A/HR6B Antibody
#2786	INCENP (A841) Antibody
#2807	INCENP (P240) Antibody
#4103	Ku70 (D35) Antibody
#4104	Ku70 (V540) Antibody
#2180	Ku80 (C48E7) Rabbit mAb
#2753	Ku80 Antibody
#5369	LAP2 α (3A3) Mouse mAb
#9157	Phospho-LATS1 (Ser909) Antibody
New #8654	Phospho-LATS1 (Thr1079) (D57D3) Rabbit mAb
#9159	Phospho-LATS1 (Thr1079) Antibody
#3477	LATS1 (C66B5) Rabbit mAb
#9153	LATS1 Antibody
#5888	LATS2 (D83D6) Rabbit mAb
New #5691	LCMT1 (4A4) Mouse mAb
#4636	MAD2L1 (D8A7) Rabbit mAb
New #8861	Phospho-MCM2 (Ser139) Antibody
XP #3619	MCM2 (D7G11) XP [®] Rabbit mAb
#4007	MCM2 Antibody
#4003	MCM3 (D47B6) Rabbit mAb
#4012	MCM3 Antibody
XP #3735	MCM7 (D10A11) XP [®] Rabbit mAb
#4018	MCM7 Antibody
#3521	Phospho-MDM2 (Ser166) Antibody
#2739	MGMT Antibody
#4120	Microcephalin-1/BRIT1 (D38G5) Rabbit mAb
#4256	MLH1 (D38G9) Rabbit mAb
#3515	MLH1 (4C9C7) Mouse mAb
#4859	Phospho-Mre11 (Ser676) Antibody
#4847	Mre11 (31H4) Rabbit mAb
#4895	Mre11 Antibody
XP #2017	MSH2 (D24B5) XP [®] Rabbit mAb
#2850	MSH2 (3A2) Mouse mAb
#3996	MSH6 (L990) Antibody
#3995	MSH6 (P150) Antibody
#4281	Phospho-Myt1 (Ser83) Antibody
#4282	Myt1 Antibody
#3057	NEK7 (C34C3) Rabbit mAb
#4497	NIPA Antibody
XP #3520	Phospho-NPM (Ser4) (D19C1) XP [®] Rabbit mAb
#3517	Phospho-NPM (Thr95) Antibody

#3541	Phospho-NPM (Thr199) Antibody
#3542	NPM Antibody
#3429	Phospho-NuMA (Ser395) Antibody
#8967	NuMA (D49H4) Rabbit mAb
#3888	NuMA Antibody
#4731	ORC1 (7A7) Rat mAb
#4736	ORC2 (3G6) Rat mAb
#4737	ORC6 (3A4) Rat mAb
#2407	p14 ARF (4C6/4) Mouse mAb
#4822	p15 INK4B Antibody
#4824	p16 INK4A Antibody
#2896	p18 INK4C (DCS118) Mouse mAb
#2947	p21 Waf1/Cip1 (12D1) Rabbit mAb
#5487	p21 Waf1/Cip1 (12D1) Rabbit mAb (Alexa Fluor [®] 488 Conjugate)
#8493	p21 Waf1/Cip1 (12D1) Rabbit mAb (Alexa Fluor [®] 555 Conjugate)
New #8587	p21 Waf1/Cip1 (12D1) Rabbit mAb (Alexa Fluor [®] 647 Conjugate)
#2946	p21 Waf1/Cip1 (DCS60) Mouse mAb
XP #3686	p27 Kip1 (D69C12) XP [®] Rabbit mAb
#3688	p27 Kip1 (D37H1) Rabbit mAb
#3698	p27 Kip1 (S53G8.5) Mouse mAb
#2552	p27 Kip1 Antibody
#4725	p48 Primase (8G10) Rat mAb
#9285	Phospho-p53 (Ser6) Antibody
#9288	Phospho-p53 (Ser9) Antibody
#9286	Phospho-p53 (Ser15) (16G8) Mouse mAb
#9235	Phospho-p53 (Ser15) (16G8) Mouse mAb (Alexa Fluor [®] 488 Conjugate)
New #9481	Phospho-p53 (Ser15) (16G8) Mouse mAb (Alexa Fluor [®] 555 Conjugate)
New #8695	Phospho-p53 (Ser15) (16G8) Mouse mAb (Alexa Fluor [®] 647 Conjugate)
#4030	Phospho-p53 (Ser15) (16G8) Mouse mAb (Biotinylated)
#9284	Phospho-p53 (Ser15) Antibody
#2529	Phospho-p53 (Thr18) Antibody
#9287	Phospho-p53 (Ser20) Antibody
#2526	Phospho-p53 (Ser33) Antibody
#9289	Phospho-p53 (Ser37) Antibody
#2521	Phospho-p53 (Ser46) Antibody
#2676	Phospho-p53 (Thr81) Antibody
#2528	Phospho-p53 (Ser315) Antibody
#9281	Phospho-p53 (Ser392) Antibody
#2570	Acetyl-p53 (Lys379) Antibody
#2525	Acetyl-p53 (Lys382) Antibody
#2527	p53 (7F5) Rabbit mAb
#5429	p53 (7F5) Rabbit mAb (Alexa Fluor [®] 488 Conjugate)
#5395	p53 (7F5) Rabbit mAb (Alexa Fluor [®] 555 Conjugate)
#4667	p53 (7F5) Rabbit mAb (Biotinylated)
#2524	p53 (1C12) Mouse mAb
#9282	p53 Antibody
#2558	Phospho-p57 Kip2 (Thr310) Antibody
#2557	p57 Kip2 Antibody

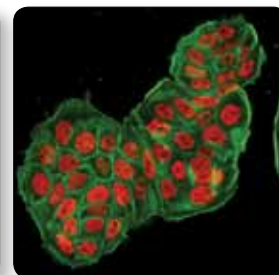
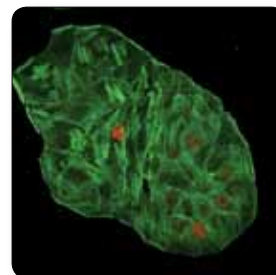
#4726	p58 Primase (8D3) Rat mAb
#4981	Phospho-p63 (Ser160/162) Antibody
#4892	p63- α Antibody
#4665	Phospho-p73 (Tyr99) Antibody
#4662	p73 Antibody
#3001	Phospho-p95/NBS1 (Ser343) Antibody
#3002	p95/NBS1 Antibody
#4941	Phospho-PBK/TOPK (Thr9) Antibody
#4942	PBK/TOPK Antibody
#5213	PCM-1 (G2000) Antibody
#5259	PCM-1 (Q15) Antibody
#2586	PCNA (PC10) Mouse mAb
#4852	PCTAIRE 1 Antibody
#2426	PHB1 Antibody
#3721	Phospho-Pin1 (Ser16) Antibody
#3722	Pin1 Antibody
#5524	PITSLRE/CDK11 (D88B3) Rabbit mAb
#5472	Phospho-PLK1 (Thr210) Antibody
#4354	Phospho-PLK1 (Thr210) Antibody (ELISA-Specific)
#4513	PLK1 (208G4) Rabbit mAb
#4535	PLK1 Antibody
#4896	PLK3 (D14F12) Rabbit mAb
#3258	PLK4 Antibody
#3522	Phospho-PNK1 (Ser114/Thr118) Antibody
#2581	Phospho-PP1 α (Thr320) Antibody
#2582	PP1 α Antibody
#4481	Phospho-PTPa (Tyr789) Antibody
#8393	Phospho-Rad18 (Ser403) Antibody
#4321	RAD21 (D213) Antibody
#4449	RAD21 (L611) Antibody
#3427	Rad50 Antibody
#3425	Rad52 Antibody
New #8147	Phospho-Rb (Ser608) (D10F2) Rabbit mAb
#2181	Phospho-Rb (Ser608) Antibody
#3590	Phospho-Rb (Ser780) (C84F6) Rabbit mAb
New #8180	Phospho-Rb (Ser780) (D59B7) Rabbit mAb
#9307	Phospho-Rb (Ser780) Antibody
#9301	Phospho-Rb (Ser795) Antibody
#9308	Phospho-Rb (Ser807/811) Antibody
#9313	Rb (D20) Rabbit mAb
#9309	Rb (4H1) Mouse mAb
#9306	PhosphoPlus [®] Rb (Ser780, Ser807/811) Antibody Kit
#4210	Phospho-RCC1 (Ser11) Antibody
#5134	RCC1 (D15H6) Rabbit mAb
#3589	RCC1 Antibody
#5104	RCC2 (D14F3) Rabbit mAb
#3667	RCC2 Antibody
#2814	RecQ4 Antibody
#5847	RecQL5 (1A2) Mouse mAb
#4735	Phospho-Rpb1 CTD (Ser2/5) Antibody
#2629	Rpb1 CTD (4H8) Mouse mAb
#2208	RPA32 (4E4) Rat mAb



Phospho-CDC20 (Ser51) Antibody #8038 and CDC20 Antibody #4823: Western blot analysis of extracts from 293T cells, untreated (-) or treated (+) with λ phosphatase, using #8038 (upper) and #4823 (lower).

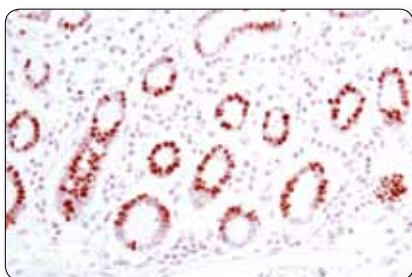


Phospho-cdc25C (Ser216) (63F9) Rabbit mAb #4901: IHC analysis of paraffin-embedded human lung carcinoma using #4901.

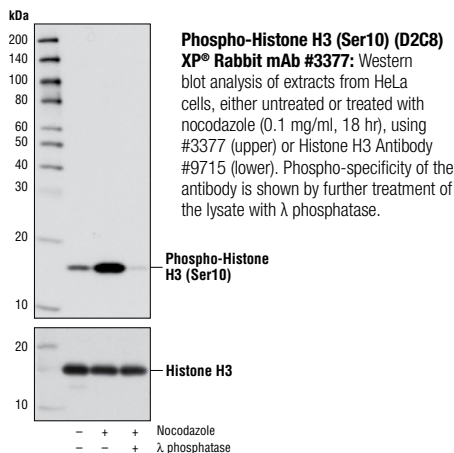


Phospho-p53 (Ser15) (16G8) Mouse mAb (Alexa Fluor[®] 555 Conjugate) #9481: Confocal IF analysis of HT-29 cells, untreated (left) or UV-treated (right), using #9481 (red). Actin filaments were labeled with Alexa Fluor[®] 488 phalloidin (green).

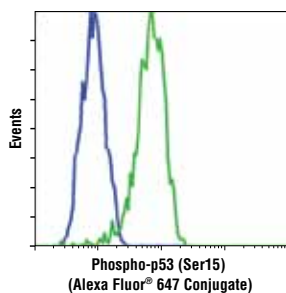
- #2193 RPA70 (C24F2) Rabbit mAb
- #2198 RPA70 (d49) Rat mAb
- #2267 RPA70 Antibody
- #3388 RRM1 Antibody
- #5754 RCHY1 Antibody
- #2156 Skp1 Antibody
- #4313 Skp2 (L70) Antibody
- #4358 Skp2 Antibody
- #4801 Phospho-SMC1 (Ser957) Antibody
- #4805 Phospho-SMC1 (Ser957) (5D11G5) Mouse mAb
- #6892 SMC1 (8E6) Mouse mAb
- #4802 SMC1 Antibody
- #8720 SMC2 (D11F9) Rabbit mAb
- #5329 SMC2 (D23C5) Rabbit mAb
- #5394 SMC2 (D91E3) Rabbit mAb
- #5696 SMC3 (D47B5) Rabbit mAb
- #9149 SMG-1 (D42D5) Rabbit mAb
- #4993 SMG-1 (Q25) Antibody
- #9592 SMG-1 (V72) Antibody
- XP** #5882 STAG2 (D25A4) XP[®] Rabbit mAb
- #4239 STAG2 Antibody
- XP** #8842 Phospho-TACC3 (Ser558) (D8H10) XP[®] Rabbit mAb
- #5645 Phospho-TACC3 (Ser558) Antibody
- XP** #8069 TACC3 (D9E4) XP[®] Rabbit mAb
- #5251 Phospho-TCTP (Ser46) Antibody
- #8441 TCTP Antibody
- #5433 TERF2IP (D9H4) Rabbit mAb
- #5449 Thymidylate Synthase (D26G11) Rabbit mAb
- #5653 Thymidylate Synthase (TS106) Mouse mAb
- #4127 Phospho-TIF1 β (Ser824) Antibody
- #4124 TIF1 β (C42G12) Rabbit mAb
- #5868 TIF1 β (4E1) Mouse mAb
- #4123 TIF1 β Antibody
- #4121 Phospho-TLK1 (Ser695) Antibody
- #4125 TLK1 Antibody
- #8559 TPX2 Antibody
- #3529 Trf1 (BED5) Mouse mAb
- #2645 Trf2 Antibody
- #3966 TRRAP (D2966) Antibody
- #3967 TRRAP (P2032) Antibody
- #5469 TTK (D15B7) Rabbit mAb
- #3255 TTK Antibody
- #2649 VCP (7F3) Rabbit mAb
- #2648 VCP Antibody
- #3307 VRK1 (1F6) Mouse mAb
- #3260 VRK3 Antibody
- #4910 Phospho-Wee1 (Ser642) (D47G5) Rabbit mAb
- #4936 Wee1 Antibody
- #2854 XLF Antibody
- New** #8746 XPB (2C6) Mouse mAb
- #2735 XRCC1 Antibody



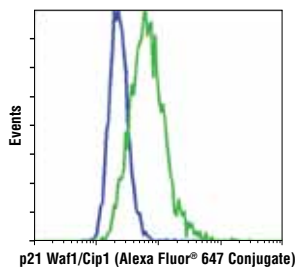
MCM2 (D7G11) XP[®] Rabbit mAb #3619: IHC analysis of paraffin-embedded human small intestine using #3619.



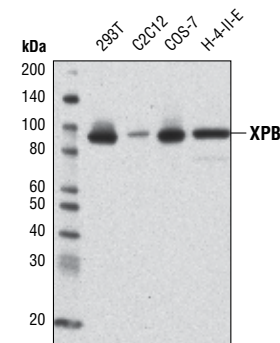
Phospho-Histone H3 (Ser10) (D2C8) XP[®] Rabbit mAb #3377: Western blot analysis of extracts from HeLa cells, either untreated or treated with nocodazole (0.1 mg/ml, 18 hr), using #3377 (upper) or Histone H3 Antibody #9715 (lower). Phospho-specificity of the antibody is shown by further treatment of the lysate with λ phosphatase.



Phospho-p53 (Ser15) (16G8) Mouse mAb (Alexa Fluor[®] 647 Conjugate) #8695: Flow cytometric analysis of HT-29 cells, untreated (blue) or UV-treated (green), using #8695.



p21 Waf1/Cip1 (12D1) Rabbit mAb (Alexa Fluor[®] 647 Conjugate) #8587: Flow cytometric analysis of Jurkat (blue) and MCF7 (green) cells using #8587.



XPB (2C6) Mouse mAb #8746: Western blot analysis of extracts from various cell lines using #8746.

PathScan[®] Sandwich ELISA

- #7115 PathScan[®] Phospho-Aurora A (Thr288) Sandwich ELISA Antibody Pair
- #7116 PathScan[®] Total Aurora A Sandwich ELISA Kit
- #7117 PathScan[®] Total Aurora A Sandwich ELISA Antibody Pair
- #7176 PathScan[®] Phospho-cdc2 (Tyr15) Sandwich ELISA Kit
- #7838 PathScan[®] Phospho-cdc2 (Tyr15) Sandwich ELISA Antibody Pair
- #7870 PathScan[®] Phospho-Chk1 (Ser317) Sandwich ELISA Kit
- #7872 PathScan[®] Total Chk1 Sandwich ELISA Kit
- #7037 PathScan[®] Phospho-Chk2 (Thr68) Sandwich ELISA Kit
- #7045 PathScan[®] Total Chk2 Sandwich ELISA Kit
- #7090 PathScan[®] Total Chk2 Sandwich ELISA Antibody Pair
- #7167 PathScan[®] Total p21 Waf1/Cip1 Sandwich ELISA Kit
- #7856 PathScan[®] Total p21 Waf1/Cip1 Sandwich ELISA Antibody Pair
- #7365 PathScan[®] Phospho-p53 (Ser15) Sandwich ELISA Kit
- #7846 PathScan[®] Phospho-p53 (Ser15) Sandwich ELISA Antibody Pair
- #7236 PathScan[®] Acetylated p53 Sandwich ELISA Kit
- #7848 PathScan[®] Acetylated p53 Sandwich ELISA Antibody Pair
- #7370 PathScan[®] Total p53 Sandwich ELISA Kit
- #7844 PathScan[®] Total p53 Sandwich ELISA Antibody Pair

SignalSilence[®] siRNA

- New** #7279 SignalSilence[®] APC6 siRNA I
- New** #7164 SignalSilence[®] APC6 siRNA II
- #6328 SignalSilence[®] ATM siRNA I
- #6329 SignalSilence[®] ATM siRNA II
- #6288 SignalSilence[®] ATR siRNA I
- #6289 SignalSilence[®] ATR siRNA II
- New** #8883 SignalSilence[®] Aurora A/AIK siRNA I
- New** #8958 SignalSilence[®] Aurora B/AIM1 siRNA I
- New** #3500 SignalSilence[®] cdc2 siRNA I
- New** #3600 SignalSilence[®] cdc2 siRNA II
- #8618 SignalSilence[®] CDK2 siRNA I
- #7417 SignalSilence[®] CDK2 siRNA II
- New** #6438 SignalSilence[®] CDK8 siRNA I
- #6241 SignalSilence[®] Chk1 siRNA I
- #6522 SignalSilence[®] Chk1 siRNA II
- #6389 SignalSilence[®] CK2 α siRNA I
- #6423 SignalSilence[®] Cyclin D1 siRNA I (Mouse Specific)
- #6477 SignalSilence[®] Cyclin D1 siRNA II (Mouse Specific)
- #6598 SignalSilence[®] p16 INK4A siRNA I
- #6456 SignalSilence[®] p21 Waf1/Cip1 siRNA I
- #6558 SignalSilence[®] p21 Waf1/Cip1 siRNA II
- #6231 SignalSilence[®] p53 siRNA I
- #6562 SignalSilence[®] p53 siRNA II
- #6451 SignalSilence[®] Rb siRNA I
- #6542 SignalSilence[®] Rb siRNA II
- #6367 SignalSilence[®] TTK siRNA I
- #6368 SignalSilence[®] TTK siRNA II

Controls

- #9113 cdc2 (Tyr15) Control Proteins
- #1190 Phospho-cdc25C (Ser216) Blocking Peptide
- #1255 Phospho-Chk2 (Thr68) Blocking Peptide
- #1044 Cyclin D1 Blocking Peptide
- #1035 Mre11 Blocking Peptide
- #1055 p21 Waf1/Cip1 Blocking Peptide
- #1070 Phospho-p53 (Ser15) Blocking Peptide
- #1080 Phospho-p53 (Ser20) Blocking Peptide
- #9303 Rb Control Proteins
- #9860 Senescence β -Galactosidase Staining Kit

Chemical Modulators

- #9886 Docetaxel
- #9807 Paclitaxel
- #9885 Roscovitine

USA Headquarters

Cell Signaling Technology, Inc.
Tel: 978-867-2300
E-mail: info@cellsignal.com
www.cellsignal.com

International Subsidiaries

Cell Signaling Technology (China) Limited
Tel: (86) 21-5835-6288
E-mail: info@cst-c.com.cn
www.cellsignal.com

Cell Signaling Technology Europe
Tel: +31 (0)71 568 1060
E-mail: info@cellsignal.eu
www.cellsignal.com

Cell Signaling Technology Japan, K.K.
Tel: 03-3295-16300
E-mail: info@cstj.co.jp
www.cstj.co.jp

Supporting Products

Antibody Sampler Kits

- #9962 Epitope Tag Antibody Sampler Kit
- #5142 Loading Control Antibody Sampler Kit
- #4670 Loading Control Antibody Sampler Kit (HRP Conjugate)

Secondary Antibodies and Detection Reagents

- #7071 Phototope®-HRP Western Blot Detection System, Anti-rabbit IgG, HRP-linked Antibody
- #7072 Phototope®-HRP Western Blot Detection System, Anti-mouse IgG, HRP-linked Antibody
- #4929 Albumin Antibody
- #5597 Anti-biotin (D5A7) Rabbit mAb
- #5571 Anti-biotin (D5A7) Rabbit mAb (HRP Conjugate)
- #7055 Anti-biotin, AP-linked Antibody
- #7075 Anti-biotin, HRP-linked Antibody
- New** #9863 Protein A Agarose Beads
- New** #8687 Protein A Magnetic Beads
- New** #8740 Protein G Magnetic Beads
- #7054 Anti-rabbit IgG, AP-linked Antibody
- #7074 Anti-rabbit IgG, HRP-linked Antibody
- #4412 Anti-rabbit IgG (H+L), F(ab')₂ Fragment (Alexa Fluor® 488 Conjugate)
- #4413 Anti-rabbit IgG (H+L), F(ab')₂ Fragment (Alexa Fluor® 555 Conjugate)
- #4414 Anti-rabbit IgG (H+L), F(ab')₂ Fragment (Alexa Fluor® 647 Conjugate)
- #6990 Anti-rabbit IgG F(ab')₂ Fragment (Sepharose Bead Conjugate)
- #5366 Anti-rabbit IgG (H+L) (DyLight® 680 Conjugate)
- #5151 Anti-rabbit IgG (H+L) (DyLight® 800 Conjugate)
- #3678 Mouse Anti-rabbit IgG (Conformation Specific) (L27A9) mAb
- New** #5127 Mouse Anti-rabbit IgG (Conformation Specific) (L27A9) mAb (HRP Conjugate)
- #3677 Mouse Anti-rabbit IgG (Light-Chain Specific) (L57A3) mAb
- #7056 Anti-mouse IgG, AP-linked Antibody
- #7076 Anti-mouse IgG, HRP-linked Antibody
- #4408 Anti-mouse IgG (H+L), F(ab')₂ Fragment (Alexa Fluor® 488 Conjugate)
- #4409 Anti-mouse IgG (H+L), F(ab')₂ Fragment (Alexa Fluor® 555 Conjugate)
- #4410 Anti-mouse IgG (H+L), F(ab')₂ Fragment (Alexa Fluor® 647 Conjugate)
- #5946 Anti-mouse IgG (H+L), F(ab')₂ Fragment (Sepharose Bead Conjugate)
- #5470 Anti-mouse IgG (H+L) (DyLight® 680 Conjugate)
- #5257 Anti-mouse IgG (H+L) (DyLight® 800 Conjugate)
- #7077 Anti-rat IgG, HRP-linked Antibody
- #4416 Anti-rat IgG (H+L), (Alexa Fluor® 488 Conjugate)
- #4417 Anti-rat IgG (H+L), (Alexa Fluor® 555 Conjugate)
- #4418 Anti-rat IgG (H+L), (Alexa Fluor® 647 Conjugate)
- #8125 SignalStain® Boost IHC Detection Reagent (HRP, Mouse)
- #8114 SignalStain® Boost IHC Detection Reagent (HRP, Rabbit)
- #8112 SignalStain® Antibody Diluent
- #3419 Streptavidin (Sepharose Bead Conjugate)
- #3999 Streptavidin-HRP

Buffers and Related Products

- #7003 20X LumiGLO® Reagent and 20X Peroxide
- #9998 BSA
- #9803 Cell Lysis Buffer (10X)
- #9852 Chaps Cell Extract Buffer (10X)
- New** #9871 20 mM Citrate pH 3.0 (Sterile)
- #4083 DAPI
- #4084 DRAQ5®
- New** #7406 DRAQ7™
- #4082 Hoechst #33342
- #5425 Normal Goat Serum
- #9999 Nonfat Dry Milk
- #7722 Blue Loading Buffer Pack
- #7723 Red Loading Buffer Pack
- New** #9872 Phosphate Buffered Saline (PBS-1X) pH7.2 (Sterile)
- #9808 Phosphate Buffered Saline (PBS-20X)
- #9809 Phosphate Buffered Saline with Tween 20 (PBST-20X)
- #5870 Phosphatase Inhibitor Cocktail (100X)
- #5871 Protease Inhibitor Cocktail (100X)
- #5872 Protease/Phosphatase Inhibitor Cocktail (100X)
- #7727 Biotinylated Protein Ladder Detection Pack
- #7720 Prestained Protein Marker, Broad Range (Premixed Format)
- #4087 Propidium Iodide (PI)/RNase Staining Solution
- #9806 RIPA Buffer (10X)
- #6883 SignalFire™ ECL Reagent
- #7002 STOP Solution
- #7004 TMB Substrate
- #4050 Tris-Glycine SDS Running Buffer (10X)
- #9997 Tris Buffered Saline with Tween 20 (TBST-10X)

Isotype Controls

- XP** #3900 Rabbit (DA1E) mAb IgG XP® Isotype Control
- XP** #2975 Rabbit (DA1E) mAb IgG XP® Isotype Control (Alexa Fluor® 488 Conjugate)
- New XP** #3969 Rabbit (DA1E) mAb IgG XP® Isotype Control (Alexa Fluor® 555 Conjugate)
- XP** #2985 Rabbit (DA1E) mAb IgG XP® Isotype Control (Alexa Fluor® 647 Conjugate)
- XP** #4096 Rabbit (DA1E) mAb IgG XP® Isotype Control (Biotinylated)
- XP** #3423 Rabbit (DA1E) mAb IgG XP® Isotype Control (Sepharose Bead Conjugate)
- XP** #8726 Rabbit (DA1E) mAb IgG XP® Isotype Control (Magnetic Bead Conjugate)
- XP** #5742 Rabbit (DA1E) mAb IgG XP® Isotype Control (PE Conjugate)
- #2729 Normal Rabbit IgG
- #4340 Rabbit IgG Isotype Control (Alexa Fluor® 488 Conjugate)
- #3452 Rabbit IgG Isotype Control (Alexa Fluor® 647 Conjugate)
- #3420 Mouse IgG (Sepharose Bead Conjugate)
- #5873 Mouse IgG (Magnetic Bead Conjugate)
- #5415 Mouse (G3A1) mAb IgG1 Isotype Control
- New** #9641 Mouse (G3A1) mAb IgG1 Isotype Control (Alexa Fluor® 555 Conjugate)
- #6899 Mouse (G3A1) mAb IgG1 Isotype Control (PE Conjugate)
- #4878 Mouse (MOPC-21) mAb IgG1 Isotype Control (Alexa Fluor® 488 Conjugate)
- #4843 Mouse (MOPC-21) mAb IgG1 Isotype control (Alexa Fluor® 647 Conjugate)
- #4097 Mouse (MOPC-21) mAb IgG1 Isotype Control (Biotinylated)

Epitope Tag Antibodies

- New** #8146 DYKDDDDK Tag (9A3) Mouse mAb (Binds to same epitope as Sigma's Anti-FLAG® M2 Antibody)
- #2368 DYKDDDDK Tag Antibody (Binds to same epitope as Sigma's Anti-FLAG® M2 Antibody)
- #2044 DYKDDDDK Tag Antibody (Binds to same epitope as Sigma's Anti-FLAG® M2 Antibody) (HRP Conjugate)
- #5407 DYKDDDDK Tag Antibody (Binds to same epitope as Sigma's Anti-FLAG® M2 Antibody) (Alexa Fluor® 488 Conjugate)
- #3768 DYKDDDDK Tag Antibody (Binds to same epitope as Sigma's Anti-FLAG® M2 Antibody) (Alexa Fluor® 555 Conjugate)
- New** #9696 DYKDDDDK Tag Antibody (Binds to same epitope as Sigma's Anti-FLAG® M2 Antibody) (Alexa Fluor® 594 Conjugate)
- #2908 DYKDDDDK Tag Antibody (Binds to same epitope as Sigma's Anti-FLAG® M2 Antibody) (Biotinylated)
- #2372 β-Gal (14B7) Mouse mAb
- XP** #2956 GFP (D5.1) XP® Rabbit mAb
- XP** #2912 GFP (D5.1) XP® Rabbit mAb (Biotinylated)
- XP** #2037 GFP (D5.1) XP® Rabbit mAb (HRP Conjugate)
- #2555 GFP Antibody
- #2955 GFP (4B10) Mouse mAb
- #9325 GSK-3β Tag Antibody
- #2625 GST (91G1) Rabbit mAb
- #5746 GST (91G1) Rabbit mAb (Biotinylated)
- #5475 GST (91G1) Rabbit mAb (HRP Conjugate)
- #2624 GST (26H1) Mouse mAb
- #3368 GST (26H1) Mouse mAb (Alexa Fluor® 488 Conjugate)
- #3720 GST (26H1) Mouse mAb (Alexa Fluor® 555 Conjugate)
- #3445 GST (26H1) Mouse mAb (Alexa Fluor® 647 Conjugate)
- #3513 GST (26H1) Mouse mAb (Sepharose Bead Conjugate)
- #2622 GST Antibody
- #2448 Glu-Glu Tag Antibody
- #3724 HA-Tag (C29F4) Rabbit mAb
- #3956 HA-Tag (C29F4) Rabbit mAb (Sepharose Bead Conjugate)
- #5017 HA-Tag (C29F4) Rabbit mAb (Biotinylated)
- #2367 HA-Tag (6E2) Mouse mAb
- #2350 HA-Tag (6E2) Mouse mAb (Alexa Fluor® 488 Conjugate)
- #3444 HA-Tag (6E2) Mouse mAb (Alexa Fluor® 647 Conjugate)
- #2999 HA-Tag (6E2) Mouse mAb (HRP Conjugate)
- #2365 His-Tag Antibody
- #2366 His-Tag (27E8) Mouse mAb
- #4079 His-Tag (27E8) Mouse mAb (Sepharose Bead Conjugate)
- #2396 MBP (8G1) Mouse mAb
- #2278 Myc-Tag (71D10) Rabbit mAb
- #3946 Myc-Tag (71D10) Rabbit mAb (Biotinylated)
- #2272 Myc-Tag Antibody
- #2276 Myc-Tag (9B11) Mouse mAb
- #2279 Myc-Tag (9B11) Mouse mAb (Alexa Fluor® 488 Conjugate)
- #3756 Myc-Tag (9B11) Mouse mAb (Alexa Fluor® 555 Conjugate)
- New** #9483 Myc-Tag (9B11) Mouse mAb (Alexa Fluor® 594 Conjugate)
- #2233 Myc-Tag (9B11) Mouse mAb (Alexa Fluor® 647 Conjugate)
- #2040 Myc-Tag (9B11) Mouse mAb (HRP Conjugate)
- #3400 Myc-Tag (9B11) Mouse mAb (Sepharose Bead Conjugate)
- #5698 Myc-Tag (9B11) Mouse mAb (Magnetic Bead Conjugate)
- New** #3739 Myc-Tag (9B11) Mouse mAb (PE Conjugate)
- New** #8476 S-Tag Antibody
- #2547 Tat (8C2) Mouse mAb