

Antibodies and Related Reagents for Ca^{2+} , cAMP, and Lipid Signaling

Product Pathways

Motif Antibodies

Chromatin Regulation

MAP Kinase Signaling

Apoptosis and Autophagy

PI3K / Akt Signaling

Cellular Metabolism

Translational Control

Development and Differentiation

Stem Cell and Lineage Markers

> Ca^{2+} , cAMP, and Lipid Signaling

Cell Cycle/Checkpoint Control

NF- κ B Signaling

Lymphocyte Signaling

Neuroscience

Tyrosine Kinases and Docking Proteins

Angiogenesis

Nuclear Receptors and Phosphatases

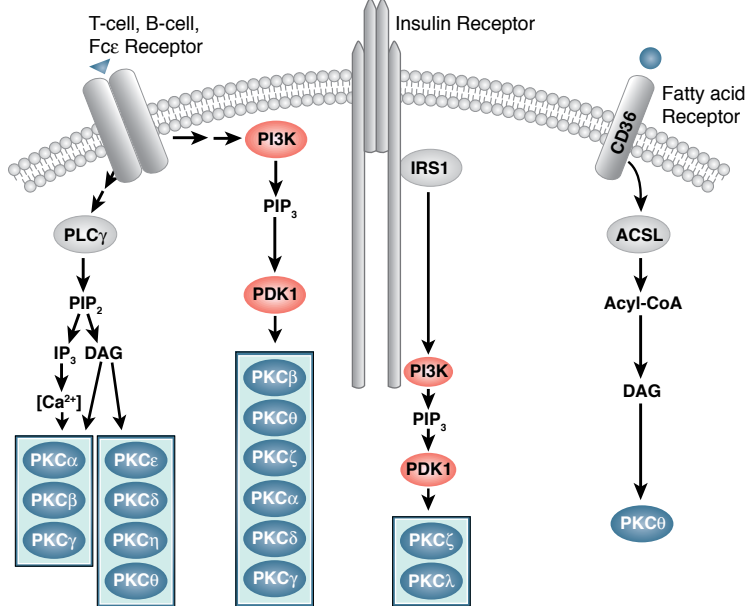
Cytoskeletal Signaling

Adhesion

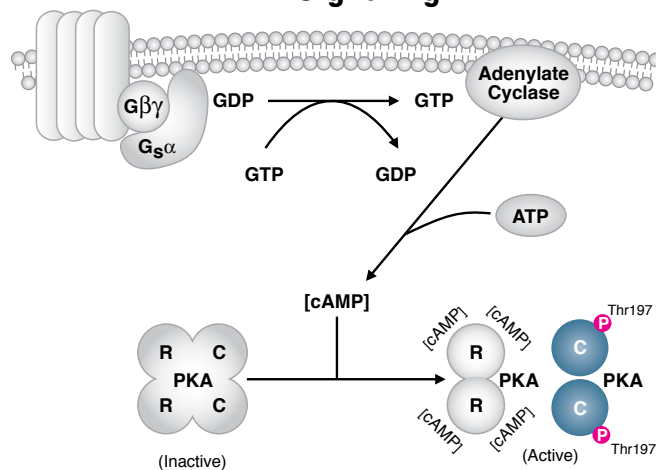
Protein Folding and Stability

For Research Use Only.
Not For Use In
Diagnostic Procedures.

PKC Signaling



PKA Signaling



Antibody Sampler Kits

#9921	Phospho-PKC Antibody Sampler Kit
#9960	PKC Isoform Antibody Sampler Kit
#3860	PLCγ Antibody Sampler Kit

Antibodies

		Application	Reactivity
New	#8513 β2-Adrenergic Receptor (D6H2) Rabbit mAb	W	H
XP	#5203 AKAP1 (D9C5) XP® Rabbit mAb	W, IP, IF-IC	H, M, R
	#5671 AKAP5 (D28G3) Rabbit mAb	W	H
New	#8691 Annexin A1 (D16A10) Rabbit mAb	W	H, M, Mk, Pg
	#3299 Annexin A1 Antibody	W	H, M, R, Mk
New	#8235 Annexin A2 (D11G2) Rabbit mAb	W, IF-IC, IHC-P, F	H, M, R, Mk, B, Pg, (Dg)
	#3666 Annexin A7 Antibody	W	H, Mk
New	#8555 Annexin V Antibody	W	H, M, R, Mk
	#3350 ApoA1 (5F4) Mouse mAb	W, IP	H
	#5700 ApoA4 (1D6B6) Mouse mAb	W, IP	H, M, R, Mk
	#5709 ApoM (8F12) Mouse mAb	W, IP	H, (M, R)
	#3687 ASM Antibody	W	H, (Mk)
	#4274 ATP2A1/SERCA1 (A988) Antibody	W	M, R
	#4219 ATP2A1/SERCA1 (L24) Antibody	W	H, M, R
	#9580 ATP2A2/SERCA2 (D51B11) Rabbit mAb	W, IP	H, M, R, Mk
	#4388 ATP2A2/SERCA2 Antibody	W, IP	H, M, R, Mk
	#2173 Calbindin (C26D12) Rabbit mAb	W, IP, IHC-P	H, M, R
	#4830 Calmodulin Antibody	W	M, R
	#2891 Calreticulin Antibody	W	H, M, R, Mk
	#3365 CaMKI-δ Antibody	W	H, R, (M)
	#3356 Phospho-CaMKII (Tyr231) Antibody	W	R, (H)
	#3361 Phospho-CaMKII (Thr286) Antibody	W	H, M, R
	#4436 CaMKII (pan) (D11A10) Rabbit mAb	W	H, M, R
	#3362 CaMKII (pan) Antibody	W	H, M, R, Mk
	#3357 CaMKII-α Antibody	W	H, M, R
	#4032 CaMKIV Antibody	W, IP	H, M, R
	#2269 CFTR Antibody	W	H, M, R, Mk
	#5393 Phospho-DARPP-32 (Thr34) (D29E8) Rabbit mAb	W	H, M, R
	#2301 Phospho-DARPP-32 (Thr75) Antibody	W	M, R
	#2306 DARPP-32 (19A3) Rabbit mAb	W, IP, IHC-P, IF-F	M, R, (H)
	#4155 EPAC1 (5D3) Mouse mAb	W	H, M, R
	#4156 EPAC2 (5B1) Mouse mAb	W	H, M, R
	#3992 Ga (pan) Antibody	W, IP, IHC-P	H, M, R, Mk, B
	#5290 Ga(i) Antibody	W	H, M, R
	#3975 Ga(o) Antibody	W	H, M, R
	#3981 Ga(o) Antibody (IP Preferred)	IP	M, (H, R)
	#3904 Ga(z) Antibody	W	H, M, R
New	#8090 Gelsolin Antibody	W	H, (Mk)
New	#8450 INPP4b (D19B9) Rabbit mAb	W, IP	H, M
	#4039 INPP4b Antibody	W	H, M, R, Mk
New	#8548 Phospho-IP3 Receptor (Ser1756) (D10E3) Rabbit mAb	W, IP	H, M, R
	#3760 Phospho-IP3 Receptor (Ser1756) Antibody	W	H, M, R
	#8568 IP3 Receptor 1 (D53A5) Rabbit mAb	W, IP	H, M, R
	#3763 IP3 Receptor Antibody	W, IP	H, M, R
	#3748 Phospho-5-Lipoxygenase (Ser271) Antibody	W	H
	#3749 Phospho-5-Lipoxygenase (Ser663) Antibody	W	H
	#3289 5-Lipoxygenase (C49G1) Rabbit mAb	W, IP, IHC-P	H, (M, R, Mk)
	#2741 Phospho-MARCKS (Ser152/156) Antibody	W	H, M, R
New	#8722 Phospho-MARCKS (Ser167/170) (D13E4) XP® Rabbit mAb	W, IF-IC	H, M, R, (C, B)
XP	#5607 MARCKS (D88D11) XP® Rabbit mAb	W, IHC-P, IF-IC, F	H, Mk
XP	#8237 NCS1 (D12D2) XP® Rabbit mAb	W, IP, IF-IC	H, M, R, Hm, Mk

		Application	Reactivity
	#8351 NKCC1 (D13A9) Rabbit mAb	W, IP, IF-IC	H, (B, Pg)
	#4828 NKCC1 Antibody	W, IP	H
	#3585 PDE5 (P434) Antibody	W, IP	H, (Mk)
	#2395 PDE5 Antibody	W	H, M
New	#8496 Phospho-Phospholamban (Ser16/Thr17) Antibody	W	R, (H, M, B, Dg, Pg)
New	#8495 Phospholamban Antibody	W	H, M, R
	#9693 PIP5K1A Antibody	W	H, M, R, Mk
	#3296 PIP5K1C Antibody	W	H, M, R, Mk
	#9694 PIP5K2B Antibody	W, F	H, M, R, Mk
	#9624 Phospho-PKA Substrate (RRXS*/T*) (100G7E) Rabbit mAb	W, IP, E-P	All
	#5661 Phospho-PKA C (Thr197) (D45D3) Rabbit mAb	W	H, M, R, Mk
	#5842 PKA C-α (D38C6) Rabbit mAb	W, IP	H, M, R, Hm, Mk
	#4782 PKA C-α Antibody	W, IP, IF-IC, F	H, M, R
	#5675 PKA RI-α (D54D9) Rabbit mAb	W, IP	H, M, R, Hm, Mk
	#3927 PKA RI-α/β Antibody	W, IF-IC	H, M, R
	#9375 Phospho-PKCa/β II (Thr638/641) Antibody	W, IP	H, M, Mk, (R, Hm)
	#9371 Phospho-PKC (pan) (βII Ser660) Antibody	W	H, M, R, Mk
	#9379 Phospho-PKC (pan) (gamma Thr514) Antibody	W, IP	H, M, R, Mk
	#2055 Phospho-PKCdelta (Tyr311) Antibody	W	H, M, R
	#9374 Phospho-PKCδ (Thr505) Antibody	W	H, M, R
	#9376 Phospho-PKCδ/θ (Ser643/676) Antibody	W, IHC-P	H, M, R, Mk, X
	#9377 Phospho-PKCθ (Thr538) Antibody	W	H, R, Mk, B, (M)
	#2060 Phospho-PKC (pan) (zeta Thr410) (190D10) Rabbit mAb	W	H, M, R, Mk
	#5016 Phospho-PKC (pan) (ζ Thr410) (190D10) Rabbit mAb (Biotinylated)	W	H, M, R, Mk
	#9378 Phospho-PKCζ/λ (Thr410/403) Antibody	W	H, M, R, Mk
	#2261 Phospho-(Ser) PKC Substrate Antibody	W, IP, E-P	All
	#2056 PKCa Antibody	W, IP, IF-IC, F	H, M, R, Mk, (Dg)
New	#9616 PKCδ (D10E2) Rabbit mAb	W, IP	H, M, R, Mk, (X, B, Dg)
	#2058 PKCδ Antibody	W, IP	H, M, R, Mk
	#2683 PKCε (22B10) Rabbit mAb	W	H, M, R, Mk
	#2998 PKCι (C83H11) Rabbit mAb	W, F	H, M, R, Mk
	#2059 PKCθ Antibody	W, IHC-P	H, M, R, Mk
	#9368 PKCζ (C24E6) Rabbit mAb	W	H, M, R, Mk
	#9372 PKCζ Antibody	W, IP, IHC-P	H
	#2054 Phospho-PKD/PKCμ (Ser744/748) Antibody	W	H, M, R, Mk
	#2051 Phospho-PKD/PKCμ (Ser916) Antibody	W, IP	H, M, R, Mk
	#2052 PKD/PKCμ Antibody	W, F	H, M, R, Mk
	#8188 PKD2 (D1A7) Rabbit mAb	W, IF-IC	H, Mk, Pg
	#5655 PKD3/PKCV (D57E6) Rabbit mAb	W, IP	H, M, R, Mk, B
	#2831 Phospho-cPLA2 (Ser505) Antibody	W, IP	H, M, R, Mk
	#5479 cPLA2 (D11H4) Rabbit mAb	W, IP	H
	#5249 cPLA2 (D49A7) Rabbit mAb	W, IP	H, M
	#2832 cPLA2 Antibody	W, IP	H, M, R, Mk
	#2481 Phospho-PLCbeta3 (Ser537) Antibody	W	H
	#2484 Phospho-PLCbeta3 (Ser1105) Antibody	W	H, M, R, Mk
	#2482 PLCbeta3 Antibody	W	H, M, R, Mk
	#2821 Phospho-PLCy1 (Tyr783) Antibody	W, F	H, M, R
	#8713 Phospho-PLCy1 (Ser1248) (D25A9) Rabbit mAb	W, IP, IHC-P, IF-IC, F, H, M, Mk, (R)	
	#4510 Phospho-PLCy1 (Ser1248) Antibody	W	H, M, R, Mk
XP	#5690 PLCy1 (D9H10) XP® Rabbit mAb	W, IP, IHC-P	H, M, R, Mk
	#2822 PLCy1 Antibody	W, IP	H, M, R
	#3874 Phospho-PLCy2 (Tyr759) Antibody	W	H, M
	#3871 Phospho-PLCy2 (Tyr1217) Antibody	W	H, M, (R)

	Application	Reactivity
#3872 PLCy2 Antibody	W, IP	H, M, (R)
#3831 Phospho-PLD1 (Thr147) Antibody	W	H, M, R
#3834 Phospho-PLD1 (Ser561) Antibody	W	H, M, R
#3832 PLD1 Antibody	W, IP	H, M, R
#2611 Phospho-PRK1 (Thr774)/PRK2 (Thr816) Antibody	W	H, M, R
#2612 PRK2 Antibody	W, IP	H, M, R
#5432 RACK1 (D59D5) Rabbit mAb	W, IP	H, M, R, Mk
#4716 RACK1 Antibody	W	H, M, R, Z
#5529 S100A10 (4E7E10) Mouse mAb	W, IHC-P, IF-IC, F	H, Mk
New #9550 S100B (D10G6) Rabbit mAb	W	H, M, R
New #7677 S100P Antibody	W, IP	H
New #9879 Serotonin Receptor 1A/5-HTR1A Antibody	W, IP	H
#3867 nSMase1 Antibody	W	H, Mk
#3297 SPHK1 Antibody	W	H, M, R, Mk
#5668 STIM1 (D88E10) Rabbit mAb	W, IP, IF-IC	H, M, R, Mk, B
#4149 STIM1 (G555) Antibody	W, IP	H, M, R
#4916 STIM1 Antibody	W, IP	H, M, R, Mk
#4917 STIM2 Antibody	W, IF-IC	H, M, R, Mk
XP #3557 TGM2 (D11A6) XP® Rabbit mAb	W, IHC-P, IF-IC	H, M, R, Mk
#3484 TRPV3 Antibody	W, IP	H, M

Applications Key: W=Western Blot IP=Immunoprecipitation IHC=Immunohistochemistry F=Flow Cytometry IF=Immunofluorescence ChIP=Chromatin Immunoprecipitation (-IC Immunocytochemistry, -P Paraffin, -F Frozen) E-P=ELISA (Peptide)

Reactivity Key: H=Human M=Mouse R=Rat Mk=Monkey Pg=Pig C=Chicken Hm=Hamster B=Bovine X=Xenopus Z=Zebrafish Dg=Dog

Species enclosed in parentheses are predicted to react based on 100% sequence homology.

PathScan® Sandwich ELISA

- New** #7251 PathScan® Phospho-MARCKS (Ser152/156) Sandwich ELISA Kit
- New** #7188 PathScan® Total MARCKS Sandwich ELISA Kit

SignalSilence® siRNA

- New** #6469 SignalSilence® Gelsolin siRNA I
- New** #6473 SignalSilence® Gelsolin siRNA II
- #6406 SignalSilence® PKA C-α siRNA I
- #6574 SignalSilence® PKA C-α siRNA II
- #6293 SignalSilence® PLCy1 siRNA I
- #6413 SignalSilence® PLCy1 siRNA I (Mouse Specific)
- #6254 SignalSilence® PLCy1 siRNA II

Controls

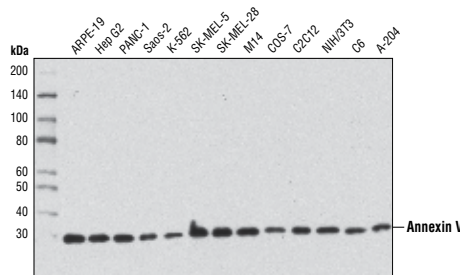
- #1081 DARPP-32 Blocking Peptide

Chemical Modulators

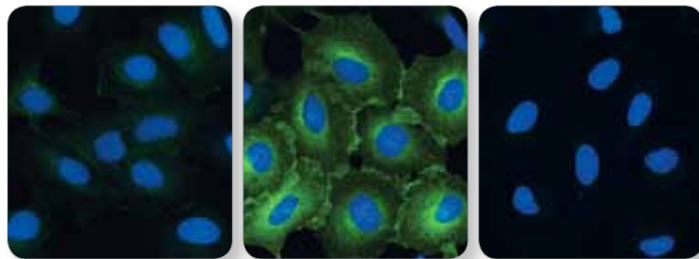
- #9841 Bisindolylmaleimide I, Hydrochloride
- #3828 Forskolin
- #9844 H-89, Dihydrochloride
- #9995 Ionomycin, Calcium Salt
- #4174 TPA (12-O-Tetradecanoylphorbol-13-Acetate)

Cyclic Nucleotide Assay Kits

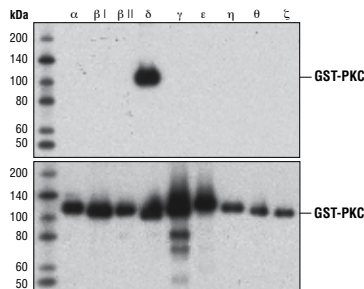
- XP** #4339 Cyclic AMP XP® Assay Kit
- XP** #8019 Cyclic AMP XP® Chemiluminescent Assay Kit
- XP** #4360 Cyclic GMP XP® Assay Kit
- XP** #8020 Cyclic GMP XP® Chemiluminescent Assay Kit



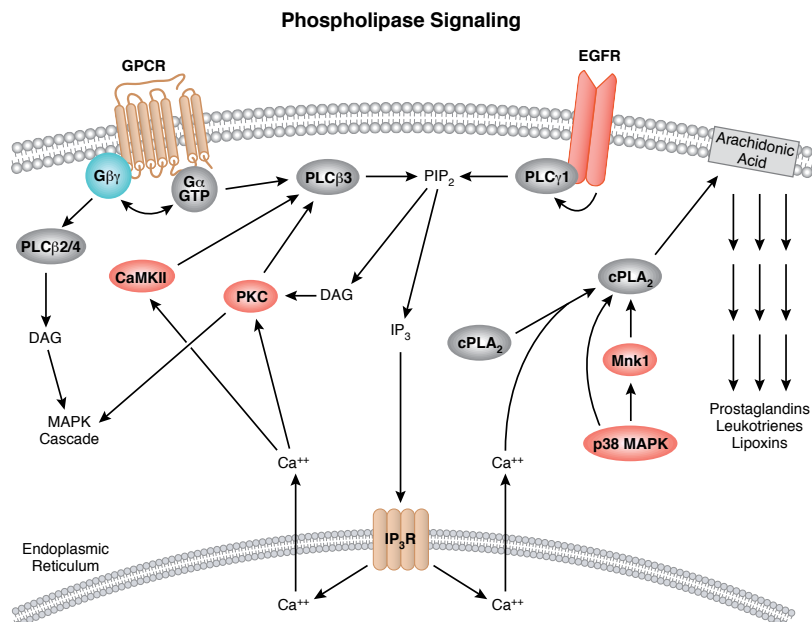
Annexin V Antibody #8555: Western blot analysis of extracts from various cell lines using #8555.



Phospho-MARCKS (Ser167/170) (D13E4) XP® Rabbit mAb #8722: Confocal IF analysis of HeLa cells, serum-starved (left), treated with TPA #4174 (200 nM, 15 min; middle) or treated with TPA #4174 and λ phosphatase (right), using #8722 (green). Blue pseudocolor = DRAQ5® #4084 (fluorescent DNA dye).



PKC6 (D10E2) Rabbit mAb #9616: Western blot analysis of bacterially expressed, GST-tagged, purified PKC isoforms, using #9616 (upper) or GST (91G1) Rabbit mAb #2625 (lower), demonstrating specificity for PKC6.



USA Headquarters

Cell Signaling Technology, Inc.
Tel: 978-867-2300
E-mail: info@cellsignal.com
www.cellsignal.com

International Subsidiaries

Cell Signaling Technology (China) Limited
Tel: (86) 21-5835-6288
E-mail: info@cst-c.com.cn
www.cellsignal.com

Cell Signaling Technology Europe
Tel: +31 (0)71 568 1060
E-mail: info@cellsignal.eu
www.cellsignal.com

Cell Signaling Technology Japan, K.K.
Tel: 03-3295-16300
E-mail: info@cstj.co.jp
www.cstj.co.jp

Supporting Products

Antibody Sampler Kits

- #9962 Epitope Tag Antibody Sampler Kit
- #5142 Loading Control Antibody Sampler Kit
- #4670 Loading Control Antibody Sampler Kit (HRP Conjugate)

Secondary Antibodies and Detection Reagents

- #7071 Phototope®-HRP Western Blot Detection System, Anti-rabbit IgG, HRP-linked Antibody
- #7072 Phototope®-HRP Western Blot Detection System, Anti-mouse IgG, HRP-linked Antibody
- #4929 Albumin Antibody
- #5597 Anti-biotin (D5A7) Rabbit mAb
- #5571 Anti-biotin (D5A7) Rabbit mAb (HRP Conjugate)
- #7055 Anti-biotin, AP-linked Antibody
- #7075 Anti-biotin, HRP-linked Antibody
- New** #9863 Protein A Agarose Beads
- New** #8687 Protein A Magnetic Beads
- New** #8740 Protein G Magnetic Beads
- #7054 Anti-rabbit IgG, AP-linked Antibody
- #7074 Anti-rabbit IgG, HRP-linked Antibody
- #4412 Anti-rabbit IgG (H+L), F(ab)² Fragment (Alexa Fluor® 488 Conjugate)
- #4413 Anti-rabbit IgG (H+L), F(ab)² Fragment (Alexa Fluor® 555 Conjugate)
- #4414 Anti-rabbit IgG (H+L), F(ab)² Fragment (Alexa Fluor® 647 Conjugate)
- #6990 Anti-rabbit IgG F(ab)² Fragment (Sepharose Bead Conjugate)
- #5366 Anti-rabbit IgG (H+L) (DyLight® 680 Conjugate)
- #5151 Anti-rabbit IgG (H+L) (DyLight® 800 Conjugate)
- #3678 Mouse Anti-rabbit IgG (Conformation Specific) (L27A9) mAb
- New** #5127 Mouse Anti-rabbit IgG (Conformation Specific) (L27A9) mAb (HRP Conjugate)
- #3677 Mouse Anti-rabbit IgG (Light-Chain Specific) (L57A3) mAb
- #7056 Anti-mouse IgG, AP-linked Antibody
- #7076 Anti-mouse IgG, HRP-linked Antibody
- #4408 Anti-mouse IgG (H+L), F(ab)² Fragment (Alexa Fluor® 488 Conjugate)
- #4409 Anti-mouse IgG (H+L), F(ab)² Fragment (Alexa Fluor® 555 Conjugate)
- #4410 Anti-mouse IgG (H+L), F(ab)² Fragment (Alexa Fluor® 647 Conjugate)
- #5946 Anti-mouse IgG (H+L), F(ab)² Fragment (Sepharose Bead Conjugate)
- #5470 Anti-mouse IgG (H+L) (DyLight® 680 Conjugate)
- #5257 Anti-mouse IgG (H+L) (DyLight® 800 Conjugate)
- #7077 Anti-rat IgG, HRP-linked Antibody
- #4416 Anti-rat IgG (H+L), (Alexa Fluor® 488 Conjugate)
- #4417 Anti-rat IgG (H+L), (Alexa Fluor® 555 Conjugate)
- #4418 Anti-rat IgG (H+L), (Alexa Fluor® 647 Conjugate)
- #8125 SignalStain® Boost IHC Detection Reagent (HRP, Mouse)
- #8114 SignalStain® Boost IHC Detection Reagent (HRP, Rabbit)
- #8112 SignalStain® Antibody Diluent
- #3419 Streptavidin (Sepharose Bead Conjugate)
- #3999 Streptavidin-HRP

Buffers and Related Products

- #7003 20X LumiGLO® Reagent and 20X Peroxide
- #9998 BSA
- #9803 Cell Lysis Buffer (10X)
- #9852 Chaps Cell Extract Buffer (10X)
- New** #9871 20 mM Citrate pH 3.0 (Sterile)
- #4083 DAPI
- #4084 DRAQ5®
- New** #7406 DRAQ7™
- #4082 Hoechst #33342
- #5425 Normal Goat Serum
- #9999 Nonfat Dry Milk
- #7722 Blue Loading Buffer Pack
- #7723 Red Loading Buffer Pack
- New** #9872 Phosphate Buffered Saline (PBS-1X) pH7.2 (Sterile)
- #9808 Phosphate Buffered Saline (PBS-20X)
- #9809 Phosphate Buffered Saline with Tween 20 (PBST-20X)
- #5870 Phosphatase Inhibitor Cocktail (100X)
- #5871 Protease Inhibitor Cocktail (100X)
- #5872 Protease/Phosphatase Inhibitor Cocktail (100X)
- #7727 Biotinylated Protein Ladder Detection Pack
- #7720 Prestained Protein Marker, Broad Range (Premixed Format)
- #4087 Propidium Iodide (PI)/RNase Staining Solution
- #9806 RIPA Buffer (10X)
- #6883 SignalFire™ ECL Reagent
- #7002 STOP Solution
- #7004 TMB Substrate
- #4050 Tris-Glycine SDS Running Buffer (10X)
- #9997 Tris Buffered Saline with Tween 20 (TBST-10X)

Isotype Controls

- XP** #3900 Rabbit (DA1E) mAb IgG XP® Isotype Control
- XP** #2975 Rabbit (DA1E) mAb IgG XP® Isotype Control (Alexa Fluor® 488 Conjugate)
- New** #3969 Rabbit (DA1E) mAb IgG XP® Isotype Control (Alexa Fluor® 555 Conjugate)
- XP** #2985 Rabbit (DA1E) mAb IgG XP® Isotype Control (Alexa Fluor® 647 Conjugate)
- XP** #4096 Rabbit (DA1E) mAb IgG XP® Isotype Control (Biotinylated)
- XP** #3423 Rabbit (DA1E) mAb IgG XP® Isotype Control (Sepharose Bead Conjugate)
- XP** #8726 Rabbit (DA1E) mAb IgG XP® Isotype Control (Magnetic Bead Conjugate)
- XP** #5742 Rabbit (DA1E) mAb IgG XP® Isotype Control (PE Conjugate)
- #2729 Normal Rabbit IgG
- #4340 Rabbit IgG Isotype Control (Alexa Fluor® 488 Conjugate)
- #3452 Rabbit IgG Isotype Control (Alexa Fluor® 647 Conjugate)
- #3420 Mouse IgG (Sepharose Bead Conjugate)
- #5873 Mouse IgG (Magnetic Bead Conjugate)
- #5415 Mouse (G3A1) mAb IgG1 Isotype Control
- New** #9641 Mouse (G3A1) mAb IgG1 Isotype Control (Alexa Fluor® 555 Conjugate)
- #6899 Mouse (G3A1) mAb IgG1 Isotype Control (PE Conjugate)
- #4878 Mouse (MOPC-21) mAb IgG1 Isotype Control (Alexa Fluor® 488 Conjugate)
- #4843 Mouse (MOPC-21) mAb IgG1 Isotype control (Alexa Fluor® 647 Conjugate)
- #4097 Mouse (MOPC-21) mAb IgG1 Isotype Control (Biotinylated)

Epitope Tag Antibodies

- New** #8146 DYKDDDDK Tag (9A3) Mouse mAb (Binds to same epitope as Sigma's Anti-FLAG® M2 Antibody)
- #2368 DYKDDDDK Tag Antibody (Binds to same epitope as Sigma's Anti-FLAG® M2 Antibody)
- #2044 DYKDDDDK Tag Antibody (Binds to same epitope as Sigma's Anti-FLAG® M2 Antibody) (HRP Conjugate)
- #5407 DYKDDDDK Tag Antibody (Binds to same epitope as Sigma's Anti-FLAG® M2 Antibody) (Alexa Fluor® 488 Conjugate)
- #3768 DYKDDDDK Tag Antibody (Binds to same epitope as Sigma's Anti-FLAG® M2 Antibody) (Alexa Fluor® 555 Conjugate)
- New** #9696 DYKDDDDK Tag Antibody (Binds to same epitope as Sigma's Anti-FLAG® M2 Antibody) (Alexa Fluor® 594 Conjugate)
- #2908 DYKDDDDK Tag Antibody (Binds to same epitope as Sigma's Anti-FLAG® M2 Antibody) (Biotinylated)
- #2372 β-Gal (14B7) Mouse mAb
- XP** #2956 GFP (D5.1) XP® Rabbit mAb
- XP** #2912 GFP (D5.1) XP® Rabbit mAb (Biotinylated)
- XP** #2037 GFP (D5.1) XP® Rabbit mAb (HRP Conjugate)
- #2555 GFP Antibody
- #2955 GFP (4B10) Mouse mAb
- #9325 GSK-3β-Tag Antibody
- #2625 GST (91G1) Rabbit mAb
- #5746 GST (91G1) Rabbit mAb (Biotinylated)
- #5475 GST (91G1) Rabbit mAb (HRP Conjugate)
- #2624 GST (26H1) Mouse mAb
- #3368 GST (26H1) Mouse mAb (Alexa Fluor® 488 Conjugate)
- #3720 GST (26H1) Mouse mAb (Alexa Fluor® 555 Conjugate)
- #3445 GST (26H1) Mouse mAb (Alexa Fluor® 647 Conjugate)
- #3513 GST (26H1) Mouse mAb (Sepharose Bead Conjugate)
- #2622 GST Antibody
- #2448 Glu-Glu Tag Antibody
- #3724 HA-Tag (C29F4) Rabbit mAb
- #3956 HA-Tag (C29F4) Rabbit mAb (Sepharose Bead Conjugate)
- #5017 HA-Tag (C29F4) Rabbit mAb (Biotinylated)
- #2367 HA-Tag (6E2) Mouse mAb
- #2350 HA-Tag (6E2) Mouse mAb (Alexa Fluor® 488 Conjugate)
- #3444 HA-Tag (6E2) Mouse mAb (Alexa Fluor® 647 Conjugate)
- #2999 HA-Tag (6E2) Mouse mAb (HRP Conjugate)
- #2365 His-Tag Antibody
- #2366 His-Tag (27E8) Mouse mAb
- #4079 His-Tag (27E8) Mouse mAb (Sepharose Bead Conjugate)
- #2396 MBP (8G1) Mouse mAb
- #2278 Myc-Tag (71D10) Rabbit mAb
- #3946 Myc-Tag (71D10) Rabbit mAb (Biotinylated)
- #2272 Myc-Tag Antibody
- #2276 Myc-Tag (9B11) Mouse mAb
- #2279 Myc-Tag (9B11) Mouse mAb (Alexa Fluor® 488 Conjugate)
- #3756 Myc-Tag (9B11) Mouse mAb (Alexa Fluor® 555 Conjugate)
- New** #9483 Myc-Tag (9B11) Mouse mAb (Alexa Fluor® 594 Conjugate)
- #2233 Myc-Tag (9B11) Mouse mAb (Alexa Fluor® 647 Conjugate)
- #2040 Myc-Tag (9B11) Mouse mAb (HRP Conjugate)
- #3400 Myc-Tag (9B11) Mouse mAb (Sepharose Bead Conjugate)
- #5698 Myc-Tag (9B11) Mouse mAb (Magnetic Bead Conjugate)
- New** #3739 Myc-Tag (9B11) Mouse mAb (PE Conjugate)
- New** #8476 S-Tag Antibody
- #2547 Tat (8C2) Mouse mAb