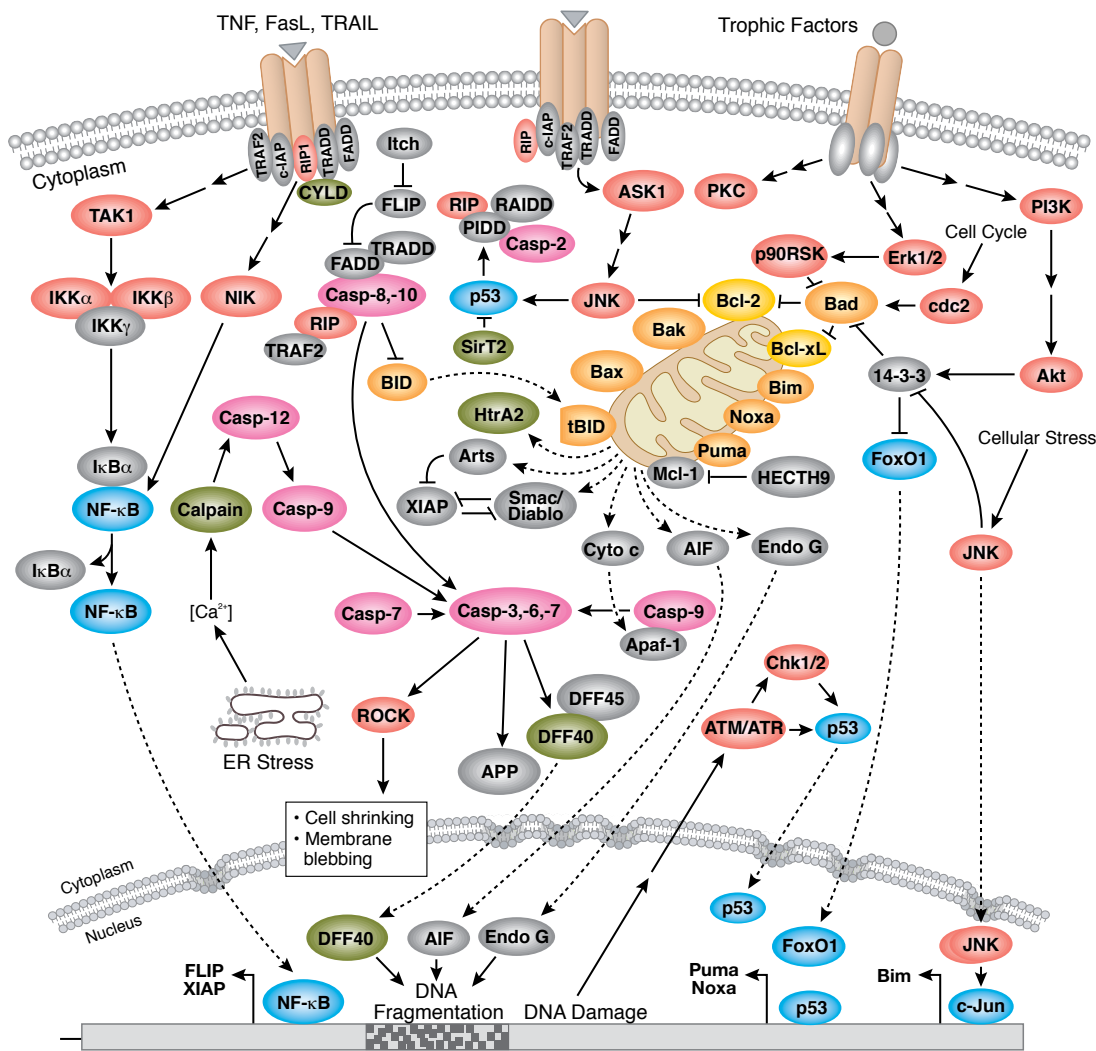


# Antibodies and Related Reagents for Apoptosis and Autophagy

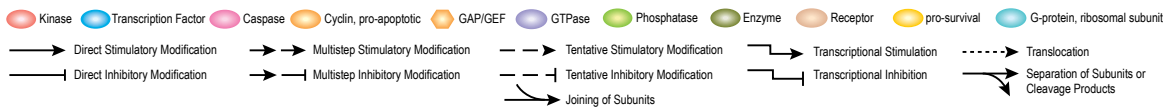
## Product Pathways

- Motif Antibodies
- Chromatin Regulation
- MAP Kinase Signaling
- > Apoptosis and Autophagy
- PI3K / Akt Signaling
- Cellular Metabolism
- Translational Control
- Development and Differentiation
- Stem Cell and Lineage Markers
- Ca<sup>2+</sup>, cAMP, and Lipid Signaling
- Cell Cycle/Checkpoint Control
- NF-κB Signaling
- Lymphocyte Signaling
- Neuroscience
- Tyrosine Kinases and Docking Proteins
- Angiogenesis
- Nuclear Receptors and Phosphatases
- Cytoskeletal Signaling
- Adhesion
- Protein Folding and Stability

## Apoptosis Overview



© 2002 – 2010 Cell Signaling Technology, Inc.



For Research Use Only.  
Not For Use In  
Diagnostic Procedures.

# Autophagy

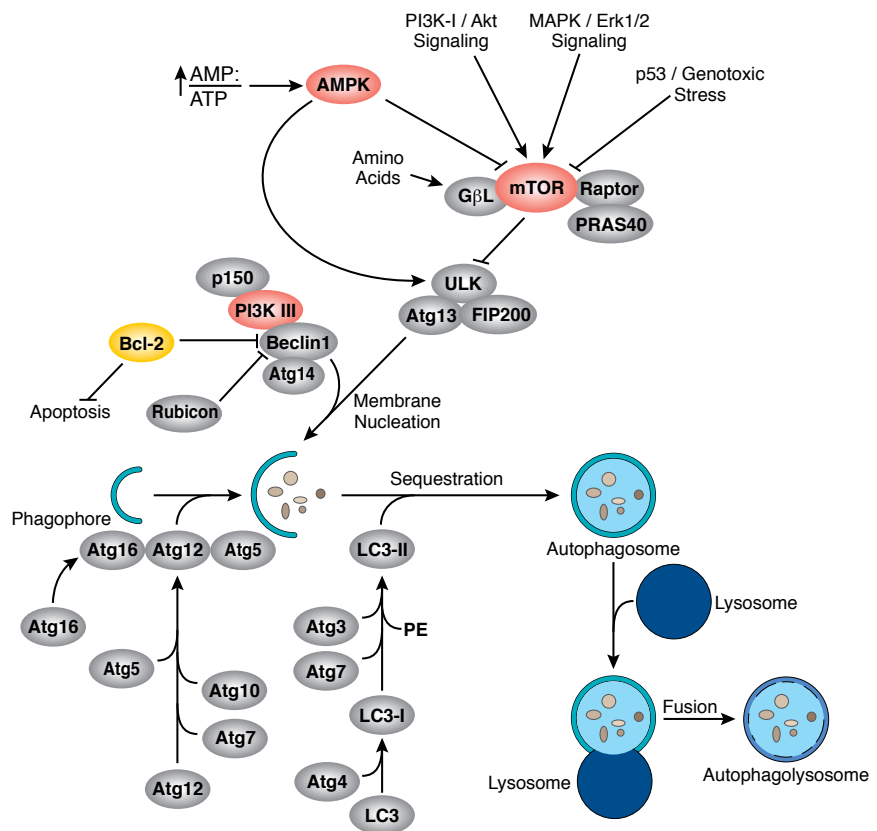
## Autophagy Antibodies

	#4445	Autophagy Antibody Sampler Kit
<b>New</b>	#8359	ULK1 Antibody Sampler Kit
	#3415	Atg3 Antibody
	#7613	Atg4A (D62C10) Rabbit mAb
	#5299	Atg4B Antibody
	#5262	Atg4C Antibody
	#9980	Atg5 (D5G3) Rabbit mAb
	#8540	Atg5 (D1G9) Rabbit mAb
	#2630	Atg5 Antibody
	#8558	Atg7 (D12B11) Rabbit mAb
	#2631	Atg7 Antibody
	#4180	Atg12 (D88H11) Rabbit mAb
	#2010	Atg12 Antibody (Human Specific)
	#2011	Atg12 Antibody (Mouse Specific)
	#5504	Atg14 Antibody
<b>New</b>	#8089	Atg16L1 (D6D5) Rabbit mAb
	#3495	Beclin-1 (D40C5) Rabbit mAb
	#3738	Beclin-1 Antibody
<b>XP</b>	#4599	LC3A (D50G8) XP <sup>®</sup> Rabbit mAb
	#4108	LC3A/B Antibody
<b>XP</b>	#3868	LC3B (D11) XP <sup>®</sup> Rabbit mAb
	#2775	LC3B Antibody
<b>New</b>	#9891	NBR1 (D2E6) Rabbit mAb
	#3358	PI3 Kinase Class III (D4E2) Rabbit mAb
	#3811	PI3 Kinase Class III Antibody
	#7151	Rubicon (D8B2) Rabbit mAb
	#8465	Rubicon (D9F7) Rabbit mAb
<b>New</b>	#7695	SQSTM1/p62 (D10E10) Rabbit mAb (IF Preferred)
	#8025	SQSTM1/p62 (D5E2) Rabbit mAb
	#5114	SQSTM1/p62 Antibody
	#6887	Phospho-ULK1 (Ser317) Antibody
	#4634	Phospho-ULK1 (Ser467) Antibody
	#5869	Phospho-ULK1 (Ser555) (D1H4) Rabbit mAb
	#6888	Phospho-ULK1 (Ser757) Antibody
	#4776	ULK1 (A705) Antibody
	#4773	ULK1 (R600) Antibody
	#5320	UVRAG Antibody
	#5320	UVRAG Antibody

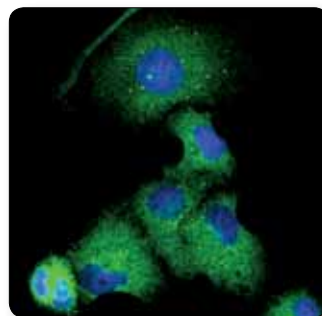
## SignalSilence<sup>®</sup> siRNA

	#6427	SignalSilence <sup>®</sup> Atg4A siRNA I
	#6336	SignalSilence <sup>®</sup> Atg4B siRNA I
	#6325	SignalSilence <sup>®</sup> Atg4C siRNA I
	#6345	SignalSilence <sup>®</sup> Atg5 siRNA I
	#6604	SignalSilence <sup>®</sup> Atg7 siRNA I
	#6286	SignalSilence <sup>®</sup> Atg14 siRNA I
	#6287	SignalSilence <sup>®</sup> Atg14 siRNA II
	#6222	SignalSilence <sup>®</sup> Beclin-1 siRNA I
	#6246	SignalSilence <sup>®</sup> Beclin-1 siRNA II
	#6214	SignalSilence <sup>®</sup> LC3A siRNA I
	#6215	SignalSilence <sup>®</sup> LC3A siRNA II
	#6212	SignalSilence <sup>®</sup> LC3B siRNA I
	#6213	SignalSilence <sup>®</sup> LC3B siRNA II
	#6394	SignalSilence <sup>®</sup> SQSTM1/p62 siRNA I
	#6399	SignalSilence <sup>®</sup> SQSTM1/p62 siRNA II
	#5521	14-3-3 η (D23B7) Rabbit mAb
	#8312	14-3-3 (pan) Antibody
	#5522	14-3-3 γ (D15B7) Rabbit mAb
	#5844	RMP Antibody

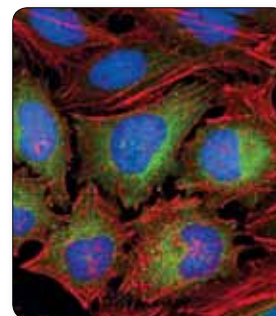
## Autophagy



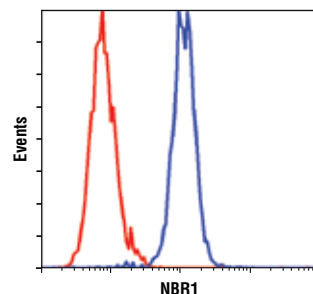
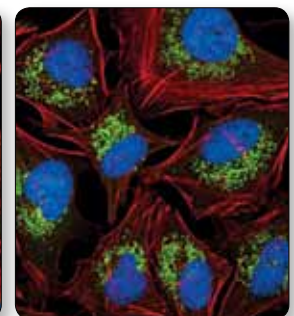
© 2007 – 2011 Cell Signaling Technology, Inc.



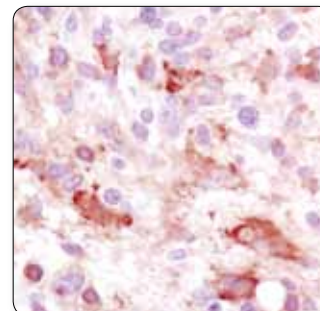
**Atg16L1 (D6D5) Rabbit mAb #8089:** Confocal IF analysis of EBSS-starved PANC-1 cells using #8089 (green). Blue pseudocolor = DRAQ5<sup>®</sup> #4084 (fluorescent DNA dye).



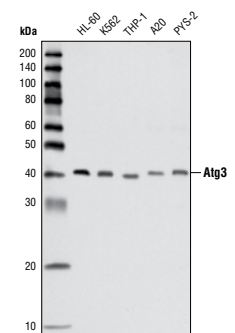
**SQSTM1/p62 (D10E10) Rabbit mAb (IF Preferred) #7695:** Confocal IF analysis of HeLa cells, untreated (left) or treated with bafilomycin A (100 nM, 18 hr; right), using #7695 (green). Actin filaments were labeled with DY-554 phalloidin. Blue pseudocolor = DRAQ5<sup>®</sup> #4084 (fluorescent DNA dye).



**NBR1 (D2E6) Rabbit mAb #9891:** Flow cytometric analysis of MCF7 cells using #9891 (blue) compared to concentration-matched Rabbit (DA1E) mAb IgG XP<sup>®</sup> Isotype Control #3900 (red).



**LC3A (D50G8) XP<sup>®</sup> Rabbit mAb #4599:** IHC analysis of paraffin-embedded human glioblastoma multiforme using #4599.



**Atg3 Antibody #3415:** Western blot analysis of extracts from various cell lines using #3415.

## Antibody Sampler Kits

- #9915 Apoptosis Antibody Sampler Kit
- #9930 Apoptosis Antibody Sampler Kit (Mouse Preferred)
- #9105 Phospho-Bad Antibody Sampler Kit
- #9929 Cleaved Caspase Antibody Sampler Kit
- #8356 Death Receptor Antibody Sampler Kit
- #9770 IAP Family Antibody Sampler Kit
- #9779 Pim Kinase Antibody Sampler Kit
- #9942 Pro-Apoptosis Bcl-2 Family Antibody Sampler Kit
- #9941 Pro-Survival Bcl-2 Family Antibody Sampler Kit
- #8357 Stress and Apoptosis Antibody Sampler Kit
- #8347 TRAF Antibody Sampler Kit
- #8109 SignalStain® Proliferation/Apoptosis IHC Sampler Kit

## PathScan® Multiplex IF Kits

- #7851 PathScan® Apoptosis and Proliferation Multiplex IF Kit

## PhosphoPlus® Antibody Duets

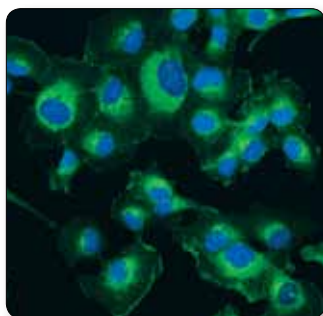
- #8223 PhosphoPlus® Bad (Ser112) Antibody Duet
- #8202 PhosphoPlus® Caspase-3 (Cleaved, Asp175) Antibody Duet

## Antibodies

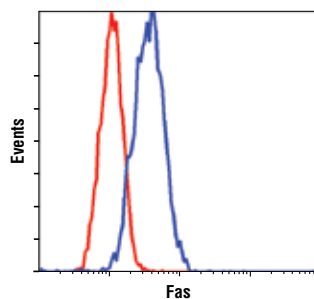
- #4647 A1/Bfl-1 Antibody
- #5630 A20/TNFAIP3 (D13H3) Rabbit mAb
- #4625 A20/TNFAIP3 Antibody
- #4934 Acinus Antibody
- XP** #5318 AIF (D39D2) XP® Rabbit mAb
- #4642 AIF Antibody
- #2171 Alix (3A9) Mouse mAb
- #3215 AP-2α (C83E10) Rabbit mAb
- #3208 AP-2α Antibody
- #2509 AP-2β Antibody
- #2320 AP-2γ Antibody
- #8969 Apaf-1 (D5C3) Rabbit mAb
- #8723 Apaf-1 (D7G4) Rabbit mAb
- #5088 Apaf-1 (R205) Antibody
- #2300 Aven Antibody
- #5284 Phospho-Bad (Ser112) (40A9) Rabbit mAb
- #9296 Phospho-Bad (Ser112) (7E11) Mouse mAb
- #9291 Phospho-Bad (Ser112) Antibody

- #5286 Phospho-Bad (Ser136) (185D10) Rabbit mAb
- #4366 Phospho-Bad (Ser136) (D25H8) Rabbit mAb
- #9295 Phospho-Bad (Ser136) Antibody
- #9297 Phospho-Bad (Ser155) Antibody
- #9239 Bad (D24A9) Rabbit mAb
- #9268 Bad (11E3) Rabbit mAb (IP Preferred)
- #9292 Bad Antibody
- #6947 Bak (D2D3) Rabbit mAb
- #3814 Bak Antibody
- #4043 BAP31 Antibody
- #5023 Bax (D2E11) Rabbit mAb
- #2772 Bax Antibody
- #2774 Bax Antibody (Human Specific)
- #2875 Phospho-Bcl-2 (Thr56) Antibody (Human Specific)
- #2827 Phospho-Bcl-2 (Ser70) (5H2) Rabbit mAb
- #2834 Phospho-Bcl-2 (Ser70) (5H2) Rabbit mAb (Alexa Fluor® 488 Conjugate)
- #2870 Bcl-2 (50E3) Rabbit mAb
- #4223 Bcl-2 (D55G8) Rabbit mAb (Human Specific)
- #3498 Bcl-2 (D17C4) Rabbit mAb (Mouse Preferred)
- #2876 Bcl-2 Antibody
- #2872 Bcl-2 Antibody (Human Specific)
- #3869 BCL2L10 Antibody
- #4237 Bcl10 (C78F1) Rabbit mAb
- #2724 Bcl-w (31H4) Rabbit mAb
- #2764 Bcl-xL (54H6) Rabbit mAb
- #2767 Bcl-xL (54H6) Rabbit mAb (Alexa Fluor® 488 Conjugate)
- #2762 Bcl-xL Antibody
- #2006 BID (7A3) Mouse mAb (Human Specific)
- #2002 BID Antibody (Human Specific)
- #2003 BID Antibody (Mouse Specific)
- #4592 Bik Antibody
- #4550 Phospho-Bim (Ser55) Antibody
- #4585 Phospho-Bim (Ser69) (D7E11) Rabbit mAb
- #4581 Phospho-Bim (Ser69) Antibody
- #2933 Bim (C34C5) Rabbit mAb
- #2819 Bim Antibody
- #3543 Bit1 Antibody
- #5889 Bmf (G81) Antibody
- #9089 BNIP3L/Nix Antibody
- #3769 BNIP3 Antibody (Rodent Specific)
- #4521 Bok Antibody

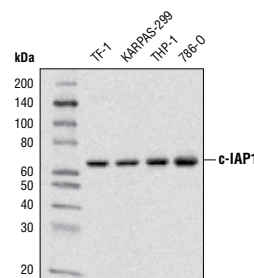
- #4199 Cleaved Caspase-1 (Asp297) (D57A2) Rabbit mAb
- #3866 Caspase-1 (D7F10) Rabbit mAb
- #2225 Caspase-1 Antibody
- #2224 Caspase-2 (C2) Mouse mAb
- #9664 Cleaved Caspase-3 (Asp175) (5A1E) Rabbit mAb
- #9654 Cleaved Caspase-3 (Asp175) (5A1E) Rabbit mAb (Biotinylated)
- #9978 Cleaved Caspase-3 (Asp175) (5A1E) Rabbit mAb (PE Conjugate)
- #9579 Cleaved Caspase-3 (Asp175) (D3E9) Rabbit mAb
- #9661 Cleaved Caspase-3 (Asp175) Antibody
- #9669 Cleaved Caspase-3 (Asp175) Antibody (Alexa Fluor® 488 Conjugate)
- #9665 Caspase-3 (8G10) Rabbit mAb
- #9668 Caspase-3 (3G2) Mouse mAb
- #9662 Caspase-3 Antibody
- #9660 Apoptosis Marker: Cleaved Caspase-3 (Asp175) Western Detection Kit
- #8120 Apoptosis Marker: SignalStain® Cleaved Caspase-3 (Asp175) IHC Detection Kit
- #4450 Caspase-4 Antibody
- #4429 Caspase-5 Antibody
- #9761 Cleaved Caspase-6 (Asp162) Antibody
- #9762 Caspase-6 Antibody
- #9491 Cleaved Caspase-7 (Asp198) Antibody
- #9494 Caspase-7 (C7) Mouse mAb (Human Specific)
- #9492 Caspase-7 Antibody
- #9748 Cleaved Caspase-8 (Asp384) (11G10) Mouse mAb
- XP** #8592 Cleaved Caspase-8 (Asp387) (D5B2) XP® Rabbit mAb (Mouse Specific)
- #9429 Cleaved Caspase-8 (Asp387) Antibody (Mouse Specific)
- #9496 Cleaved Caspase-8 (Asp391) (18C8) Rabbit mAb
- #4790 Caspase-8 (D35G2) Rabbit mAb
- #9746 Caspase-8 (1C12) Mouse mAb
- #4927 Caspase-8 Antibody (Mouse Specific)
- #9505 Cleaved Caspase-9 (Asp315) Antibody (Human Specific)
- New** #7237 Cleaved Caspase-9 (Asp330) (D2D4) Rabbit mAb



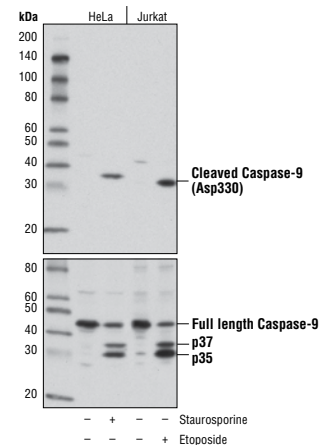
**DR5 (D4E9) XP® Rabbit mAb #8074:** Confocal IF analysis of HT-1080 cells using #8074 (green). Actin filaments were labeled with DY-554 phalloidin (red). Blue pseudocolor = DRAQ5® #4084 (fluorescent DNA dye).



**Fas (4C3) Mouse mAb #8023:** Flow cytometric analysis of HT-1080 cells using #8023 (blue) compared to concentration-matched Mouse (G3A1) mAb IgG1 Isotype Control #5415 (red).



**c-IAP1 (D5G9) Rabbit mAb #7065:** Western blot analysis of extracts from various cell lines using #7065.



**Cleaved Caspase-9 (Asp330) (D2D4) Rabbit mAb #7237:** Western blot analysis of extracts from HeLa and Jurkat cells, untreated or treated with Staurosporine #9953 (1 μM, 3 hr) or etoposide (25 μM, overnight), using #7237 (upper) or total Caspase-9 Antibody (Human Specific) #9502 (lower).



#9501	Cleaved Caspase-9 (Asp330) Antibody (Human Specific)
#9509	Cleaved Caspase-9 (Asp353) Antibody (Mouse Specific)
#9507	Cleaved Caspase-9 (Asp353) Antibody (Rat Specific)
#9502	Caspase-9 Antibody (Human Specific)
#9504	Caspase-9 Antibody (Mouse Specific)
#9506	Caspase-9 Antibody (Rat Specific)
#9508	Caspase-9 (C9) Mouse mAb
#9752	Caspase-10 Antibody
#2202	Caspase-12 Antibody
#4280	Cytochrome c (136F3) Rabbit mAb
#4272	Cytochrome c Antibody
#2282	DAP1 Antibody
#2182	DAP5 Antibody
#3008	DAPK1 Antibody
#2928	DAPK3/ZIPK Antibody
#4533	Daxx (25C12) Rabbit mAb
#4880	Phospho-DBC1 (Thr454) Antibody
#5857	DBC1 (3G4) Mouse mAb
#5693	DBC1 Antibody
#4756	DcR1 Antibody
#4741	DcR2 Antibody
#4758	DcR3 Antibody
#9731	Cleaved DFF45 (Asp224) Antibody
#9732	DFF45/DFF35 Antibody
#3605	DIDO1 Antibody
#3254	DR3 Antibody
<b>New XP</b> #8074	DR5 (D4E9) XP® Rabbit mAb
#3696	DR5 Antibody
#7616	Phospho-DR6 (Ser562) Antibody
#2294	DRAK2 (33D7) Rabbit mAb
#4969	Endonuclease G Antibody
#6907	FAIM Antibody
#2785	Phospho-FADD (Ser191) Antibody (Mouse Specific)
#2781	Phospho-FADD (Ser194) Antibody (Human Specific)
#2782	FADD Antibody (Human Specific)
#4932	FAF1 Antibody
#4233	Fas (C18C12) Rabbit mAb
<b>New</b> #8023	Fas (4C3) Mouse mAb
#4273	FasL Antibody

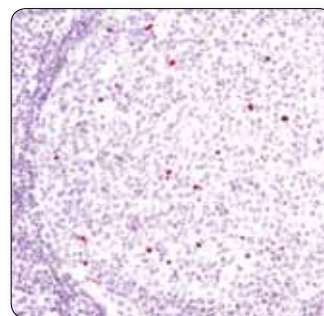
#8510	FLIP (D16A8) Rabbit mAb
#2121	Cleaved $\alpha$ -Fodrin (Asp1185) Antibody
#2122	Alpha-Fodrin Antibody
#4928	Granzyme A Antibody
#4275	Granzyme B Antibody
#5091	HIPK2 Antibody
#2176	HtrA2 Antibody
<b>New</b> #7065	c-IAP1 (D5G9) Rabbit mAb
#4952	c-IAP1 Antibody
#3130	c-IAP2 (58C7) Rabbit mAb
#2031	Cleaved Lamin A (Asp230) Antibody
#2036	Cleaved Lamin A (Small Subunit) (30H5) Mouse mAb
#2035	Cleaved Lamin A (Small Subunit) Antibody
#2026	Phospho-Lamin A/C (Ser22) Antibody
#4777	Lamin A/C (4C11) Mouse mAb
<b>New</b> #8617	Lamin A/C (4C11) Mouse mAb (Alexa Fluor® 488 Conjugate)
#2032	Lamin A/C Antibody
<b>New</b> #9087	Lamin B1 Antibody
<b>New</b> #9622	Lamin B2 Antibody
#5369	LAP2 $\alpha$ (3A3) Mouse mAb
<b>XP</b> #5471	Livin (D61D1) XP® Rabbit mAb
#4682	Mad-1 Antibody
#9119	Maspin (L250) Antibody
#9117	Maspin (T50) Antibody
#4739	Max (S20) Antibody
#4732	Max Antibody
#4579	Phospho-Mcl-1 (Ser159/Thr163) Antibody
#5453	Mcl-1 (D35A5) Rabbit mAb
#4572	Mcl-1 Antibody
#3329	MNDA (3C1) Rat mAb
<b>New</b> #9283	MNDA (3C1) Rat mAb (Alexa Fluor® 488 Conjugate)
#3681	Phospho-Mst1 (Thr183)/Mst2 (Thr180) Antibody
#3682	Mst1 Antibody
#3952	Mst2 Antibody
#3723	Mst3 Antibody
#4062	Mst3b Antibody
<b>XP</b> #5605	c-Myc (D84C12) XP® Rabbit mAb
#9402	c-Myc Antibody
#9405	N-Myc Antibody
#4990	NALP1 Antibody
#3506	Phospho-NDRG1 (Ser330) Antibody

<b>XP</b> #5482	Phospho-NDRG1 (Thr346) (D98G11) XP® Rabbit mAb
<b>XP</b> #6992	Phospho-NDRG1 (Thr346) (D98G11) XP® Rabbit mAb (Alexa Fluor® 488 Conjugate)
<b>XP</b> #9851	Phospho-NDRG1 (Thr346) (D98G11) XP® Rabbit mAb (Alexa Fluor® 555 Conjugate)
<b>XP</b> #7497	Phospho-NDRG1 (Thr346) (D98G11) XP® Rabbit mAb (Alexa Fluor® 647 Conjugate)
#3217	Phospho-NDRG1 (Thr346) Antibody
#5196	NDRG1 Antibody
#5667	NDRG2 Antibody
#5846	NDRG3 Antibody
<b>XP</b> #3960	Nur77 (D63C5) XP® Rabbit mAb
#2329	Phospho-PAR-4 (Thr163) Antibody
#2328	PAR-4 Antibody
<b>XP</b> #5625	Cleaved PARP (Asp214) (D64E10) XP® Rabbit mAb
<b>XP</b> #9148	Cleaved PARP (Asp214) (D64E10) XP® Rabbit mAb (Alexa Fluor® 488 Conjugate)
<b>XP</b> #6894	Cleaved PARP (Asp214) (D64E10) XP® Rabbit mAb (Alexa Fluor® 555 Conjugate)
<b>XP</b> #6987	Cleaved PARP (Asp214) (D64E10) XP® Rabbit mAb (Alexa Fluor® 647 Conjugate)
<b>XP</b> #9185	Cleaved PARP (Asp214) (D64E10) XP® Rabbit mAb (Biotinylated)
<b>XP</b> #5838	Cleaved PARP (Asp214) (D64E10) XP® Rabbit mAb (Sephacose Bead Conjugate)
<b>XP</b> #8978	Cleaved PARP (Asp214) (D64E10) XP® Rabbit mAb (PE Conjugate)
#9546	Cleaved PARP (Asp214) (19F4) Mouse mAb (Human Specific)
#9548	Cleaved PARP (Asp214) (7C9) Mouse mAb (Mouse Specific)
#9541	Cleaved PARP (Asp214) Antibody (Human Specific)
#9544	Cleaved PARP (Asp214) Antibody (Mouse Specific)
#9545	Cleaved PARP (Asp214) Antibody (Rat Specific)
#9532	PARP (46D11) Rabbit mAb
#6704	PARP (46D11) Rabbit mAb (Sephacose Bead Conjugate)
#9542	PARP Antibody
<b>XP</b> #9535	PDCD4 (D29C6) XP® Rabbit mAb
#2776	Phospho-PEA-15 (Ser104) Antibody
#2780	PEA-15 Antibody
#3693	Perforin Antibody (Mouse Specific)
#4294	PHLDA3 Antibody
#2907	Pim-1 Antibody
<b>XP</b> #4730	Pim-2 (D1D2) XP® Rabbit mAb
#4165	Pim-3 (D17C9) Rabbit mAb

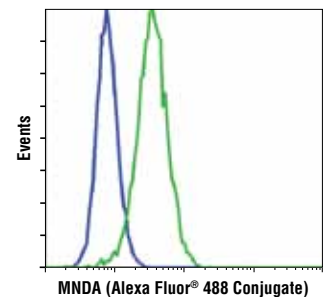
## Caspase-3 Antibody Comparison

	Reactivity	WB	IP	IHC	Flow	IF	
#9664	Cleaved Caspase-3 (Asp175) (5A1E) Rabbit mAb	H, M, R, Mk	++++	++++	+++	+++	++++
#9654	Cleaved Caspase-3 (Asp175) (5A1E) Rabbit mAb (Biotinylated)	H, M, R, Mk	++++	-	N/A	N/T	N/T
#9661	Cleaved Caspase-3 (Asp175) Antibody	H, M, R, Mk, B, (Pg)	++++	-	++++	++++	+++
#9669	Cleaved Caspase-3 (Asp175) Antibody (Alexa Fluor® 488 Conjugate)	H, M, R, Mk, B, (Pg)	N/A	N/A	N/A	++++	+++
#9665	Caspase-3 (8G10) Rabbit mAb	H, M, R, Mk	++++	++++	-	-	-
#9662	Caspase-3 Antibody	H, M, R, Mk	++++	+++	++	-	-
#9668	Caspase-3 (3G2) Mouse mAb	H	+++	-	-	-	-

Testing Key: ++++ Very Highly Recommended / +++ Highly Recommended / ++ Recommended / - Not Recommended / N/T Not Tested / N/A Not Applicable



Cleaved PARP (Asp214) (D64E10) XP® Rabbit mAb #5625: IHC analysis of paraffin-embedded human tonsil using #5625.



MNDA (3C1) Rat mAb (Alexa Fluor® 488 Conjugate) #9283: Flow cytometric analysis of Jurkat (blue) and THP-1 (green) cells using #9283.

#4976	Puma Antibody
#7467	Puma Antibody (Rodent Specific)
#4845	RANK Antibody
#4816	RANK Ligand (L300) Antibody
#3959	RANK Ligand (R2) Antibody
<b>XP</b> #3493	RIP (D94C12) XP® Rabbit mAb
#4982	RIP2 Antibody
#2954	Smac/Diablo Mouse mAb
<b>New</b> #8888	Phospho-Survivin (Thr34) (D2E11) Rabbit mAb
#2808	Survivin (71G4B7) Rabbit mAb
#2810	Survivin (71G4B7) Rabbit mAb (Alexa Fluor® 488 Conjugate)
#4580	Survivin (71G4B7) Rabbit mAb (Alexa Fluor® 555 Conjugate)
#2866	Survivin (71G4B7) Rabbit mAb (Alexa Fluor® 647 Conjugate)
#4037	Survivin (71G4B7) Rabbit mAb (Biotinylated)
#3947	Survivin (71G4B7) Rabbit mAb (Sepharose Bead Conjugate)
#2803	Survivin Antibody
#2802	Survivin (6E4) Mouse mAb
#2141	TANK Antibody
<b>New</b> #8182	TAX1BP1 Antibody
#4775	Tid-1 (RS13) Mouse mAb
#4628	TMS1 Antibody
#3707	TNF-α Antibody
#3736	TNF-R1 (C25C1) Rabbit mAb
#3727	TNF-R2 Antibody
#4307	Thymidine Phosphorylase/ECGF1 (D69B12) Rabbit mAb
#2937	TP/ECGF1 Antibody
#3684	TRADD (7G8) Rabbit mAb
#3694	TRADD Antibody
#4715	TRAF1 (45D3) Rabbit mAb
#4710	TRAF1 (1F3) Rat mAb
#4724	TRAF2 (C192) Antibody
#4712	TRAF2 Antibody
#4729	TRAF3 Antibody
#8028	TRAF6 (D21G3) Rabbit mAb
#3219	TRAIL (C92B9) Rabbit mAb
#4437	TWEAK Antibody
#4403	TWEAK Receptor/Fn14 Antibody
#4045	WWOX Antibody
#2045	XIAP (3B6) Rabbit mAb
#2042	XIAP Antibody

## PathScan® Sandwich ELISA

#7103	PathScan® Multi-Target HCA Stress and Apoptosis Kit
#7182	PathScan® Phospho-Bad (Ser112) Sandwich ELISA Kit
#7842	PathScan® Phospho-Bad (Ser112) Sandwich ELISA Antibody Pair
#7162	PathScan® Total Bad Sandwich ELISA Kit
#7840	PathScan® Total Bad Sandwich ELISA Antibody Pair
#7190	PathScan® Cleaved Caspase-3 (Asp175) Sandwich ELISA Kit
#7262	PathScan® Cleaved PARP (Asp214) Sandwich ELISA Kit
#7858	PathScan® Cleaved PARP (Asp214) Sandwich ELISA Antibody Pair
#7193	PathScan® Phospho-Survivin (Thr34) Sandwich ELISA Kit

## Controls

#9293	Bad Control Proteins
#2043	Jurkat Apoptosis Cell Lysates (etoposide)
#1026	Phospho-Bad (Ser112) Blocking Peptide
#1225	Bcl-xL Blocking Peptide
#1050	Cleaved Caspase-3 (Asp175) Blocking Peptide
#8104	SignalSlide® Cleaved Caspase-3 (Asp175) IHC Controls
#9663	Caspase-3 Control Cell Extracts
#1011	Cleaved Caspase-8 (Asp391) Blocking Peptide
#1033	Cytochrome c Blocking Peptide
#1037	Survivin Blocking Peptide
#1066	TRAF1 Blocking Peptide

## Growth Factors and Cytokines

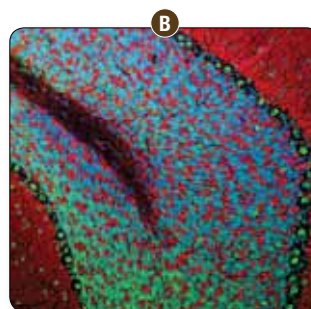
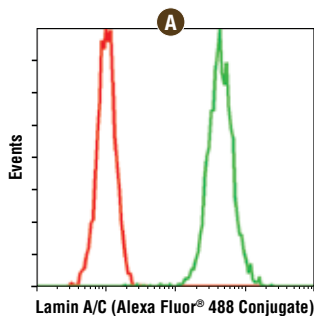
#8902	Human Tumor Necrosis Factor-α (hTNF-α)
-------	--

## Chemical Modulators

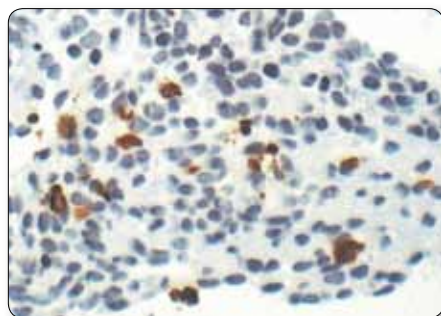
#9953	Staurosporine
-------	---------------

## SignalSilence® siRNA

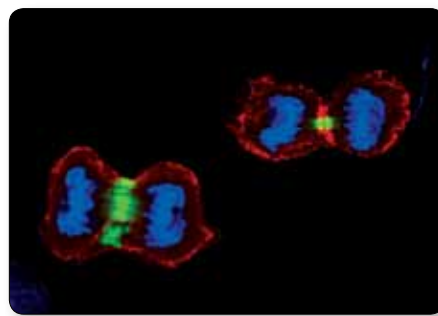
#6229	SignalSilence® Apaf-1 siRNA I
#6471	SignalSilence® Bad siRNA I
#6512	SignalSilence® Bad siRNA II
#6486	SignalSilence® Bak siRNA I
#6321	SignalSilence® Bax siRNA I
#6514	SignalSilence® Bax siRNA II
#6441	SignalSilence® Bcl-2 siRNA I
#6516	SignalSilence® Bcl-2 siRNA II
#6362	SignalSilence® Bcl-xL siRNA I
#6363	SignalSilence® Bcl-xL siRNA II
#6461	SignalSilence® Bim siRNA I
#6518	SignalSilence® Bim siRNA II
#6466	SignalSilence® Caspase-3 siRNA I
#6488	SignalSilence® Caspase-3 siRNA I (Mouse Specific)
#6520	SignalSilence® Caspase-3 siRNA II
#6501	SignalSilence® Caspase-3 siRNA II (Mouse Specific)
#6357	SignalSilence® Caspase-10 siRNA I
#6315	SignalSilence® Mcl-1 siRNA I
#6341	SignalSilence® c-Myc siRNA I
#6552	SignalSilence® c-Myc siRNA II
#6245	SignalSilence® NDRG1 siRNA I
#6257	SignalSilence® NDRG1 siRNA II
#6304	SignalSilence® PARP siRNA I
#6409	SignalSilence® PARP siRNA I (Mouse Specific)
#6305	SignalSilence® PARP siRNA II
#6412	SignalSilence® PARP siRNA II (Mouse Specific)
<b>New</b> #7830	SignalSilence® PEA-15 siRNA I
<b>New</b> #7865	SignalSilence® PEA-15 siRNA II
#6351	SignalSilence® Survivin siRNA I
#6446	SignalSilence® XIAP siRNA I
#6550	SignalSilence® XIAP siRNA II



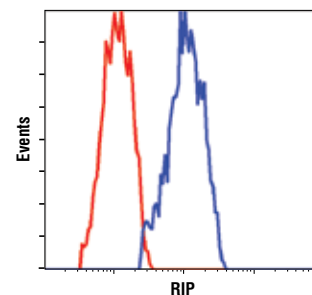
**Lamin A/C (4C11) Mouse mAb (Alexa Fluor® 488 Conjugate) #8617:** Flow cytometric analysis of HeLa cells (A) using #8617 (green) compared to concentration-matched Mouse (MOPC-21) mAb IgG1 Isotype Control (Alexa Fluor® 488 Conjugate) #4878 (red). Confocal IF analysis of normal rat brain (B) using #8617 (green). Actin filaments were labeled with DY-554 phalloidin (red). Blue pseudocolor = DRAQ5® (fluorescent DNA dye).



**Cleaved Caspase-3 (Asp175) (5A1E) Rabbit mAb #9664:** IHC analysis of paraffin-embedded mouse embryo, showing cytoplasmic localization in apoptotic cells, using #9664.



**Survivin (71G4B7) Rabbit mAb (Alexa Fluor® 488 Conjugate) #2810:** Confocal IF analysis of HeLa cells using #2810 (green). Actin filaments were labeled with Alexa Fluor® 555 phalloidin (red). Blue pseudocolor = DRAQ5® #4084 (fluorescent DNA dye).



**RIP (D94C12) XP® Rabbit mAb #3493:** Flow cytometric analysis of MCF7 cells using #3493 (blue) compared to Rabbit (DA1E) mAb IgG XP® Isotype Control #3900 (red).

**USA Headquarters**

Cell Signaling Technology, Inc.  
Tel: 978-867-#2300  
E-mail: info@cellsignal.com  
www.cellsignal.com

**International Subsidiaries**

Cell Signaling Technology (China) Limited  
Tel: (86) 21-#5835-#6288  
E-mail: info@cst-c.com.cn  
www.cellsignal.com

Cell Signaling Technology Europe  
Tel: +31 (0)71 568 #1060  
E-mail: info@cellsignal.eu  
www.cellsignal.com

Cell Signaling Technology Japan, K.K.  
Tel: 03-3295-16300  
E-mail: info@cstj.co.jp  
www.cstj.co.jp

**Mitochondrial Control of Apoptosis**

