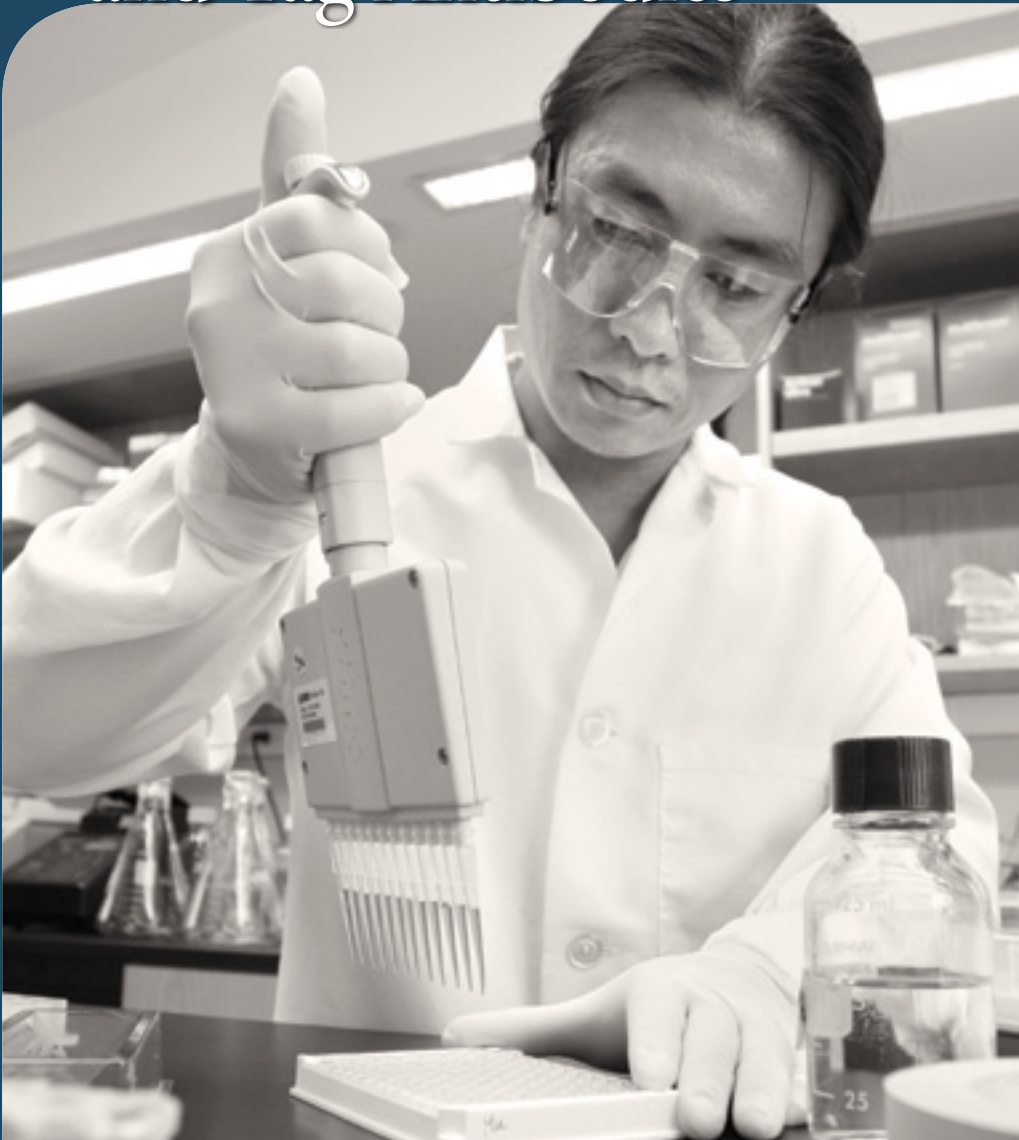




Cell Signaling
TECHNOLOGY®

Complementary Reagents and Tag Antibodies



www.cellsignal.com

UNPARALLELED PRODUCT QUALITY, VALIDATION, AND TECHNICAL SUPPORT

XP™ Monoclonal Antibodies

eXceptional Performance™

XP™ monoclonal antibodies are a line of high quality rabbit monoclonal antibodies exclusively available from Cell Signaling Technology (CST). Any product labeled with XP has been carefully selected based on superior performance in all approved applications.

XP monoclonal antibodies are generated using XMT® technology, a proprietary monoclonal method developed at Cell Signaling Technology. This technology provides access to a broad range of antibody-producing B cells unattainable with traditional monoclonal technologies, allowing more comprehensive screening and the identification of XP monoclonal antibodies with:

eXceptional specificity

As with all CST™ antibodies, the antibody is specific to your target of interest, saving you valuable time and resources.

+ eXceptional sensitivity

The antibody will provide a stronger signal for your target protein in cells and tissues, allowing you to monitor expression of low levels of endogenous proteins, saving you valuable materials.

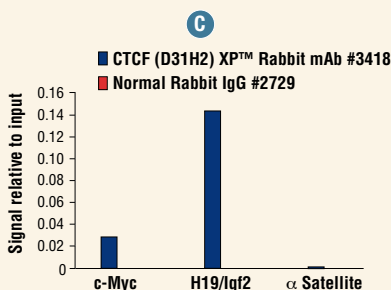
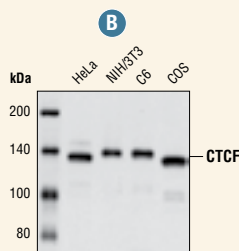
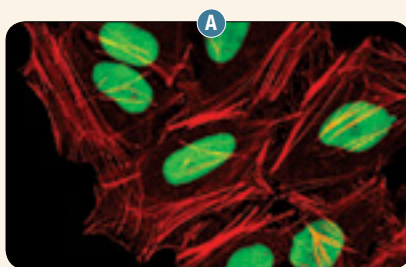
+ eXceptional stability and reproducibility

XMT technology combined with our stringent quality control ensures maximum lot-to-lot consistency and the most reproducible results.

= eXceptional Performance™

XMT technology coupled with our extensive antibody validation and stringent quality control delivers XP monoclonal antibodies with eXceptional Performance in the widest range of applications.

CTCF (D31H2) XP™ Rabbit mAb #3418 is an example of an antibody with superior performance in a wide range of tested applications.

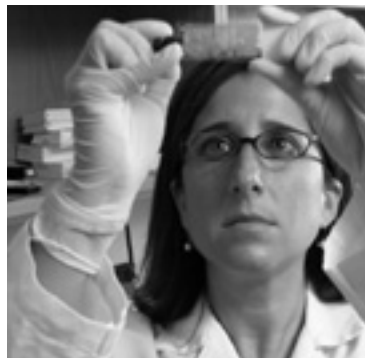


CTCF (D31H2) XP™ Rabbit mAb #3418: (A) Confocal IF analysis of HCT-116 cells using #3418 (green). Actin filaments were labeled with DY-554 phalloidin (red). (B) Western blot analysis of extracts from various cell lines using #3418. (C) Chromatin immunoprecipitations were performed with cross-linked chromatin from 4×10^6 HeLa cells, with either 10 μ l of #3418 or 2 μ l of Normal Rabbit IgG #2729, using SimpleChIP® Enzymatic Chromatin IP Kit (Magnetic Beads) #9003. The enriched DNA was quantified by real-time PCR using human c-Myc promoter primers, SimpleChIP® Human H19/Igf2 ICR Primers #5172, and SimpleChIP® Human α Satellite Repeat Primers #4486. The amount of immunoprecipitated DNA in each sample is represented as signal relative to the total amount of input chromatin, which is equivalent to one.

Complementary Products

Cell Signaling Technology offers a wide selection of secondary antibodies and detection reagents, as well as standard buffers and experimental controls.

These same reagents are also used in-house for antibody validation in applications including western blotting, immunohistochemistry, flow cytometry, and immunofluorescent analysis and therefore work optimally with our primary antibodies. Technical support is provided by the product scientists who make the reagents and know them best.



Epitope Tag Antibodies

#9962	Epitope Tag Antibody Sampler Kit	#3445	GST (26H1) Mouse mAb (Alexa Fluor® 647 Conjugate)
#2368	DYKDDDDK Tag Antibody (Binds to same epitope as Sigma's Anti-FLAG® M2 Antibody)	#3513	GST (26H1) Mouse mAb (Sepharose Bead Conjugate)
#5407	DYKDDDDK Tag Antibody (Binds to same epitope as Sigma's Anti-FLAG® M2 Antibody) (Alexa Fluor® 488 Conjugate)	#3724	HA-Tag (C29F4) Rabbit mAb
#3768	DYKDDDDK Tag Antibody (Binds to same epitope as Sigma's Anti-FLAG® M2 Antibody) (Alexa Fluor® 555 Conjugate)	NEW #5017	HA-Tag (C29F4) Rabbit mAb (Biotinylated)
#3916	DYKDDDDK Tag Antibody (Binds to same epitope as Sigma's Anti-FLAG® M2 Antibody) (Alexa Fluor® 647 Conjugate)	NEW #3956	HA-Tag (C29F4) Rabbit mAb (Sepharose Bead Conjugate)
NEW #2908	DYKDDDDK Tag Antibody (Binds to same epitope as Sigma's Anti-FLAG® M2 Antibody) (Biotinylated)	#2367	HA-Tag (6E2) Mouse mAb
#2044	DYKDDDDK Tag Antibody (Binds to same epitope as Sigma's Anti-FLAG® M2 Antibody) (HRP Conjugate)	#2350	HA-Tag (6E2) Mouse mAb (Alexa Fluor® 488 Conjugate)
#2372	β-Gal (14B7) Mouse mAb	#3444	HA-Tag (6E2) Mouse mAb (Alexa Fluor® 647 Conjugate)
#2956	GFP (D5.1) XP™ Rabbit mAb	#2999	HA-Tag (6E2) Mouse mAb (HRP Conjugate)
#2912	GFP (D5.1) XP™ Rabbit mAb (Biotinylated)	#2366	His-Tag (27E8) Mouse mAb
#2037	GFP (D5.1) XP™ Rabbit mAb (HRP Conjugate)	NEW #4079	His-Tag (27E8) Mouse mAb (Sepharose Bead Conjugate)
#2555	GFP Antibody	#2365	His-Tag Antibody
#2955	GFP (4B10) Mouse mAb	#2396	MBP (8G1) Mouse mAb
#2448	Glu-Glu Tag Antibody	#2278	Myc-Tag (71D10) Rabbit mAb
#9325	GSK-3β-Tag Antibody	#3946	Myc-Tag (71D10) Rabbit mAb (Biotinylated)
#2625	GST (91G1) Rabbit mAb	#2272	Myc-Tag Antibody
#5475	GST (91G1) Rabbit mAb (HRP Conjugate)	#2276	Myc-Tag (9B11) Mouse mAb
#2622	GST Antibody	#2279	Myc-Tag (9B11) Mouse mAb (Alexa Fluor® 488 Conjugate)
#2624	GST (26H1) Mouse mAb	#3756	Myc-Tag (9B11) Mouse mAb (Alexa Fluor® 555 Conjugate)
#3368	GST (26H1) Mouse mAb (Alexa Fluor® 488 Conjugate)	#2233	Myc-Tag (9B11) Mouse mAb (Alexa Fluor® 647 Conjugate)
#3720	GST (26H1) Mouse mAb (Alexa Fluor® 555 Conjugate)	#2040	Myc-Tag (9B11) Mouse mAb (HRP Conjugate)
		#3400	Myc-Tag (9B11) Mouse mAb (Sepharose Bead Conjugate)
		#2547	Tat (8C2) Mouse mAb

Western Blotting

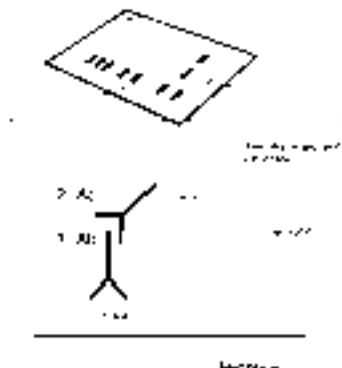
Cell Signaling Technology (CST) antibodies perform best when CST recommended protocols are followed. The optimal primary antibody dilutions and diluents are already determined and noted on the product datasheet, saving you from troubleshooting. CST recommended protocols for both chemiluminescent and fluorescent western blotting are available on our website.

Secondary Antibodies

#7055	Anti-biotin, AP-linked Antibody
#7056	Anti-mouse IgG, AP-linked Antibody
#7054	Anti-rabbit IgG, AP-linked Antibody
#7075	Anti-biotin, HRP-linked Antibody
#7076	Anti-mouse IgG, HRP-linked Antibody
#7074	Anti-rabbit IgG, HRP-linked Antibody
#7077	Anti-rat IgG, HRP-linked Antibody
#3678	Mouse Anti-rabbit IgG (Conformation Specific) (L27A9) mAb
#3677	Mouse Anti-rabbit IgG (Light-Chain Specific) (L57A3) mAb
#5470	Anti-mouse IgG (H+L) (DyLight® 680 Conjugate)
#5366	Anti-rabbit IgG (H+L) (DyLight® 680 Conjugate)
#5257	Anti-mouse IgG (H+L) (DyLight® 800 Conjugate)
#5151	Anti-rabbit IgG (H+L) (DyLight® 800 Conjugate)
#3419	Streptavidin-HRP
#3999	Streptavidin (Sephacrose Bead Conjugate)

Detection Reagents

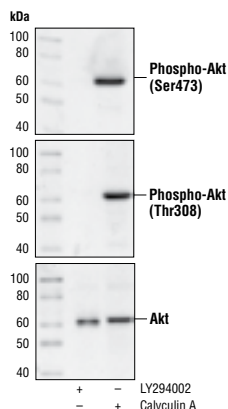
#7072	Phototope®-HRP Western Blot Detection System, Anti-mouse IgG, HRP-linked Antibody
#7071	Phototope®-HRP Western Blot Detection System, Anti-rabbit IgG, HRP-linked Antibody
#7003	20X LumiGLO® Reagent and 20X Peroxide



Phototope®-HRP Western Blot Detection System:
After the primary antibody is bound to the target protein, a complex with HRP-linked secondary antibody is formed. The LumiGLO® is added and emits light during enzyme-catalyzed decomposition.

Control Cell Extracts and Proteins

Cell extracts are available that can be used as positive and negative controls for our antibodies. For a list of recommended controls for all of our activation state-specific antibodies visit the Support section at www.cellsignal.com.



Akt Control Cell Extracts #9273:

Western blot analysis of extracts from Jurkat cells, treated with Calyculin A #9902 or LY294002 #9901, using Phospho-Akt (Ser473) Antibody #9271 (upper), Phospho-Akt (Thr308) Antibody #9275 (middle) or Akt Antibody #9272 (lower).

Control Cell Extracts

#9273	Akt Control Cell Extracts
#9158	AMPK Control Cell Extracts
#9223	ATF-2 Control Cell Extracts
#9663	Caspase-3 Control Cell Extracts
#9193	CREB Control Cell Extracts
#5634	EGF Receptor Control Cell Extracts
#9263	c-Jun Control Cell Extracts
#2043	Jurkat Apoptosis Cell Lysates (etoposide)
#9160	MEK1/2 HeLa Control Cell Extracts
#9233	MKK3/MKK6 Control Cell Extracts
#9243	NF-κB Control Cell Extracts
#9213	p38 MAPK Control Cell Extracts
#9194	p44/42 MAPK (Erk1/2) Control Cell Extracts
#9203	p70 S6 Kinase Control Cell Extracts
#9253	SAPK/JNK Control Cell Extracts
#9173	Stat1 Control Cell Extracts
#9133	Stat3 Control Cell Extracts
#9353	Stat5 Control Cell Extracts

Protein Markers

#7727 Biotinylated Protein Ladder Detection Pack

#7720 Prestained Protein Marker, Broad Range
(Premixed Format)

Control Proteins

#9293 Bad Control Proteins

#9113 cdc2 (Tyr15) Control Proteins

#9183 Elk-1 Control Proteins

#9103 p44/42 MAPK (Erk1/2) Control Proteins

#9303 Rb Control Proteins

#2904 VEGF Receptor 2 Control Proteins

Cell Signaling Technology offers the highest quality research products, rigorous validation, and technical support provided by the same scientists who produce and validate the products and know them best.



Solutions and Miscellaneous

#9804 ATP (10 mM)

#7722 Blue Loading Buffer Pack

#9998 BSA*

#9803 Cell Lysis Buffer (10X)

#9852 Chaps Cell Extract Buffer (10X)

#9999 Nonfat Dry Milk

#9808 Phosphate Buffered Saline (PBS-20X)

#9809 Phosphate Buffered Saline with Tween 20 (PBST-20X)

#7723 Red Loading Buffer Pack

#9806 RIPA Buffer (10X)

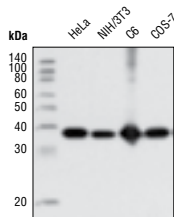
#9997 Tris Buffered Saline with Tween 20 (TBST-10X)

#4050 Tris-Glycine SDS Running Buffer (10X)

* BSA is not currently available in Japan.

Loading Controls

Cell Signaling Technology offers a several antibodies that can be used as total protein loading controls. Our loading control antibody sampler kits are an economical means to test which loading control is best in the system of interest. For example, Loading Control Antibody Sampler Kit (HRP Conjugate) #4670 contains antibodies directed against β -actin, β -tubulin, GAPDH, COX IV, and histone H3, already conjugated to HRP, saving one step in the detection process.



**GAPDH (D16H11)
XP™ Rabbit mAb
#5174:** Western blot
analysis of extracts
from various cell lines
using #5174.

Loading Control Antibodies

#5142 Loading Control Antibody Sampler Kit

NEW #4670 Loading Control Antibody Sampler Kit
(HRP Conjugate)

NEW #9774 Loading Control Antibody Sampler Kit (Mouse)

#4970 β -Actin (13E5) Rabbit mAb

NEW #5125 β -Actin (13E5) Rabbit mAb (HRP Conjugate)

#4967 β -Actin Antibody

#3700 β -Actin (8H10D10) Mouse mAb

#4850 COX IV (3E11) Rabbit mAb

#5247 COX IV (3E11) Rabbit mAb (HRP Conjugate)

#4844 COX IV Antibody

NEW #5174 GAPDH (D16H11) XP™ Rabbit mAb

#2118 GAPDH (14C10) Rabbit mAb

#3683 GAPDH (14C10) Rabbit mAb (HRP Conjugate)

#5014 GAPDH (14C10) Rabbit mAb (Biotinylated)

#4499 Histone H3 (D1H2) XP™ Rabbit mAb

#9717 Histone H3 (3H1) Rabbit mAb

#5192 Histone H3 (3H1) Rabbit mAb (HRP Conjugate)

#9715 Histone H3 Antibody

#3638 Histone H3 (96C10) Mouse mAb

#2125 α -Tubulin (11H10) Rabbit mAb

#2144 α -Tubulin Antibody

NEW #3873 α -Tubulin (DM1A) Mouse mAb

#2148 α / β -Tubulin Antibody

#2128 β -Tubulin (9F3) Rabbit mAb

NEW #5346 β -Tubulin (9F3) Rabbit mAb (HRP Conjugate)

#2146 β -Tubulin Antibody

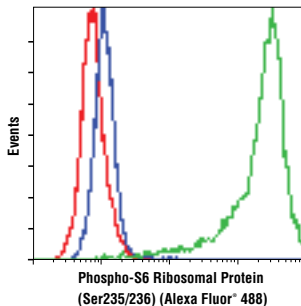
Immunofluorescence and Flow Cytometry

Secondary Antibodies

#4408	Anti-mouse IgG (H+L), F(ab') ₂ Fragment (Alexa Fluor® 488 Conjugate)
#4412	Anti-rabbit IgG (H+L), F(ab') ₂ Fragment (Alexa Fluor® 488 Conjugate)
#4416	Anti-rat IgG (H+L) (Alexa Fluor® 488 Conjugate)
#4409	Anti-mouse IgG (H+L), F(ab') ₂ Fragment (Alexa Fluor® 555 Conjugate)
#4413	Anti-rabbit IgG (H+L), F(ab') ₂ Fragment (Alexa Fluor® 555 Conjugate)
#4417	Anti-rat IgG (H+L) (Alexa Fluor® 555 Conjugate)
#4410	Anti-mouse IgG (H+L), F(ab') ₂ Fragment (Alexa Fluor® 647 Conjugate)
#4414	Anti-rabbit IgG (H+L), F(ab') ₂ Fragment (Alexa Fluor® 647 Conjugate)
#4418	Anti-rat IgG (H+L) (Alexa Fluor® 647 Conjugate)
#5470	Anti-mouse IgG (H+L) (DyLight® 680 Conjugate)
#5366	Anti-rabbit IgG (H+L) (DyLight® 680 Conjugate)
#5257	Anti-mouse IgG (H+L) (DyLight® 800 Conjugate)
#5151	Anti-rabbit IgG (H+L) (DyLight® 800 Conjugate)

Isotype Control Antibodies

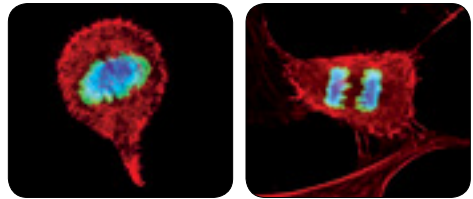
Isotype control antibodies are used to estimate the non-specific binding of primary antibodies due to Fc receptor binding or other protein-protein interactions and should have the same immunoglobulin type as the test antibody. Rabbit (DA1E) mAb IgG XP™ Isotype Control #3900 is not directed against any known antigen and functions as an isotype control for rabbit IgG monoclonal antibodies. This antibody is also offered conjugated to Alexa Fluor® 488 and 647 (#2975 and #2985).



Rabbit (DA1E) mAb IgG XP™ Isotype Control (Alexa Fluor® 488 Conjugate) #2975: Flow cytometric analysis of Jurkat cells, untreated (blue) or IFN- α -treated (green), using Phospho-S6 Ribosomal Protein (Ser235/236) (D57.2.2E) XP™ Rabbit mAb (Alexa Fluor® 488 conjugate) #4803 compared to #2975 (red).

Fluorescent DNA Dyes

#4083	DAPI
#4084	DRAQ5®
#4082	Hoechst 33342



DRAQ5® #4084: Confocal IF analysis of HeLa cells using Phospho-Histone H3 (Ser10) (D2C8) XP™ Rabbit mAb #3377 (green). Actin filaments were labeled with DY-554 phalloidin (red). Blue pseudocolor = DRAQ5® #4084 (fluorescent DNA dye).

Isotype Control Antibodies

#3900	Rabbit (DA1E) mAb IgG XP™ Isotype Control
#2975	Rabbit (DA1E) mAb IgG XP™ Isotype Control (Alexa Fluor® 488 Conjugate)
#2985	Rabbit (DA1E) mAb IgG XP™ Isotype Control (Alexa Fluor® 647 Conjugate)
#4096	Rabbit (DA1E) mAb IgG XP™ Isotype Control (Biotinylated)
#3423	Rabbit (DA1E) mAb IgG XP™ Isotype Control (Sephacose Bead Conjugate)
NEW #5742	Rabbit (DA1E) mAb IgG XP™ Isotype Control (PE Conjugate)
#2729	Normal Rabbit IgG
#4340	Rabbit IgG Isotype Control (Alexa Fluor® 488 Conjugate)
#3452	Rabbit IgG Isotype Control (Alexa Fluor® 647 Conjugate)
NEW #5415	Mouse (G3A1) mAb IgG1 Isotype Control (PE Conjugate)
NEW #6899	Mouse (G3A1) mAb IgG1 Isotype Control (PE Conjugate)
#4878	Mouse (MOPC-21) mAb IgG1 Isotype Control (Alexa Fluor® 488 Conjugate)
#4843	Mouse (MOPC-21) mAb IgG1 Isotype control (Alexa Fluor® 647 Conjugate)
#4097	Mouse (MOPC-21) mAb IgG1 Isotype Control (Biotinylated)
#3420	Mouse IgG (Sephacose Bead Conjugate)

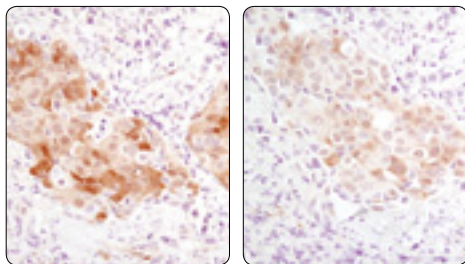
Immunohistochemistry

SignalSlide® IHC Controls

- #8101 SignalSlide® Phospho-Akt (Ser473) IHC Controls**
For use with Antibodies: 2211, 2217, 2317, 2691, 2855, 2920, 2938, 2997, 3787, 4060, 4685, 4691, 4857, 4858, 5196, 5364, 5482, 9323, 9644
- #8104 SignalSlide® Cleaved Caspase-3 (Asp175) IHC Controls**
For use with Antibodies: 2035, 5625, 8109, 9541, 9661, 9662, 9664
- #8102 SignalSlide® Phospho-EGF Receptor IHC Controls**
For use with Antibodies: 2234, 2235, 2236, 2237, 3777, 4267, 4404, 4407, 9411, 9416, 9417
- NEW #8117 SignalSlide® Phospho-ErbB Family IHC Controls**
For use with Antibodies: 2165, 2242, 2243, 3777, 4267, 4290, 4407, 4791, 8111
- NEW #8118 SignalSlide® Phospho-Met (Tyr1234/1235) IHC Controls**
For use with Antibody: 3077
- #8103 SignalSlide® Phospho-p44/42 MAPK (Thr202/Tyr204) IHC Controls**
For use with Antibodies: 4370, 4376, 4695, 4696, 9102
- #8106 SignalSlide® PTEN IHC Control Slides**
For use with Antibodies: 9188, 9559
- #8105 SignalSlide® Phospho-Stat1/3/5 IHC Controls**
For use with Antibodies: 4113, 4904, 8113, 9132, 9139, 9314, 9359, 9145, 9167, 9175

SignalStain® Diluent

SignalStain® Antibody Diluent #8112 yields superior staining with many of our IHC-validated antibodies. Please see product datasheets for diluent recommendations or visit the Antibody Diluent Table on our website.



SignalStain® Antibody Diluent #8112: IHC analysis of paraffin-embedded human breast carcinoma comparing #8112 (left) and TBST with 5% normal goat serum (right) using Phospho-Akt (Ser473) (D9E) XP™ Rabbit mAb #4060.

Blocking Reagents

- #5425 Normal Goat Serum**
- #9997 Tris Buffered Saline with Tween 20 (TBST-10X)**

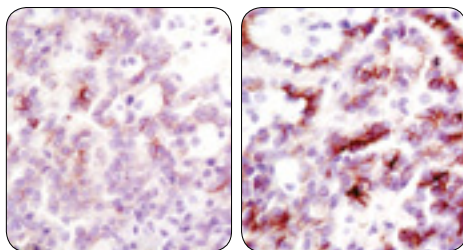
SignalStain® Boost IHC Detection Reagents

- NEW #8125 SignalStain® Boost IHC Detection Reagent (HRP, Mouse)**
- NEW #8114 SignalStain® Boost IHC Detection Reagent (HRP, Rabbit)**

These polymer-based detection reagents were developed to enhance sensitivity and eliminate complications arising from false positive staining due to endogenous biotin. Both products offer a one-step, highly sensitive alternative to traditional IHC detection methods. SignalStain® Boost IHC Detection Reagents are specific to either rabbit or mouse IgG, can be used to visualize targets in both paraffin-embedded and frozen tissue, and are compatible with all peroxidase-based substrates.

SignalStain® Boost IHC Detection Reagent offers several advantages over conventional ABC detection methods:

- Superior sensitivity, resulting in a stronger signal and greater confidence in your results.
- A reduced number of steps in the detection procedure, saving valuable time.
- Less false positives resulting from endogenous biotin staining, providing a lower overall background.



SignalStain® Boost IHC Detection Reagent (HRP, Rabbit)

#8114: IHC analysis of paraffin-embedded human papillary renal cell carcinoma using Phospho-Met (Tyr1234/1235) (D26) XP™ Rabbit mAb #3077 with biotin-based detection (left) or SignalStain® Boost IHC Detection Reagent (HRP, Rabbit) #8114 (right).

Isotype Control Antibodies

- #3900 Rabbit (DA1E) mAb IgG XP™ Isotype Control**
- NEW #5415 Mouse (G3A1) mAb IgG1 Isotype Control**

Chromatin Immunoprecipitation

SimpleChIP® Enzymatic Chromatin Immunoprecipitation (ChIP) Kits are co-developed by Cell Signaling Technology and New England Biolabs scientists and contain the highest quality research reagents. These kits are available with either Protein G agarose or Protein G magnetic beads and contain all buffers and reagents needed to perform up to 30 ChIP assays.

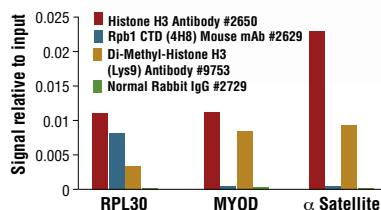


SimpleChIP® Enzymatic Chromatin IP Kits

30 assays

#9002 SimpleChIP® Enzymatic Chromatin IP Kit (Agarose Beads)

Glycine Solution (10X)	ChIP-Grade Protein G Agarose Beads (blocked with BSA and sonicated salmon sperm DNA)
Buffer A (4X)	
Buffer B (4X)	
ChIP Buffer (10X)	DNA Purification Columns, Protease Inhibitor Cocktail (200X)
ChIP Elution Buffer (2X)	Proteinase K
5 M NaCl, 0.5 M EDTA	SimpleChIP® Human RPL30 Exon 3 Primers
DNA Binding Buffer	SimpleChIP® Mouse RPL30 Intron 2 Primers
DNA Wash Buffer	Histone H3 (D2B12) XP™ Rabbit mAb (ChIP Formulated) #2650
DNA Elution Buffer	1M DTT
RNase A (10 mg/ml)	
Micrococcal Nuclease	
Normal Rabbit IgG #2729	



SimpleChIP® Enzymatic Chromatin IP Kit (Magnetic Beads) #9003: Chromatin IPs were performed using digested chromatin from HeLa cells and the indicated ChIP-validated antibodies. Purified DNA was analyzed by quantitative real-time PCR, using SimpleChIP® Human RPL30 Exon 3 Primers #7014 (control primer set), SimpleChIP® Human MyoD1 Exon 1 Primers #4490, and SimpleChIP® Human α Satellite Repeat Primers #4486. The amount of immunoprecipitated DNA in each sample is represented as signal relative to the total amount of input chromatin (equivalent to one).

#9003 SimpleChIP® Enzymatic Chromatin IP Kit (Magnetic Beads)

This kit contains the same components as #9002 except #9003 contains ChIP-Grade Protein G Magnetic Beads (blocked with BSA).

#7017 6-Tube Magnetic Separation Rack

#5415 Mouse (G3A1) mAb IgG1 Isotype Control

#2729 Normal Rabbit IgG

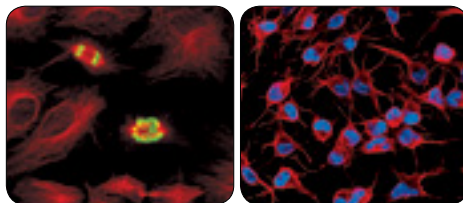
SimpleChIP® Control Primers are a mix of two control primers that can be used to amplify DNA that has been isolated using chromatin immunoprecipitation (ChIP). These primers will amplify positive control DNA sequences that contain known binding sites to the target protein detected by the antibody employed in the ChIP assay, and also can be used as negative controls to demonstrate antibody sensitivity. For more information see our brochure on Chromatin Immunoprecipitation.

- Primers are designed, tested, and optimized in-house in conjunction with our ChIP-validated antibodies and SimpleChIP® Kits, saving time and reagents.
- Primers are optimized for use in real-time PCR with SYBR® Green dye, which simplifies quantification of DNA enrichment.
- Technical Support is provided by the scientists who designed and use these products, and know them best.

Activators and Inhibitors

#9944	AICAR
#9841	Bisindolylmaleimide I, Hydrochloride
#9972	Brefeldin A
#9902	Calyculin A (Serine/Threonine Phosphatase Inhibitor)
#9973	Cyclosporin A
#9886	Docetaxel
#9974	FK-506
#3828	Forskolin
#9843	Geldanamycin
#9844	H-89, Dihydrochloride
#9995	Ionomycin, Calcium Salt
#9901	LY294002 (PI3 Kinase Inhibitor)
#9996	Oligomycin
#9807	Paclitaxel
#9900	PD98059 (MEK1 Inhibitor)
NEW	#5870 Phosphatase Inhibitor Cocktail (100X)
NEW	#5871 Protease Inhibitor Cocktail (100X)
NEW	#5872 Protease/Phosphatase Inhibitor Cocktail (100X)
	#9904 Rapamycin (FRAP/mTOR Inhibitor)
	#9885 Roscovitine

#5633	SB203580 (p38 inhibitor)
#9953	Staurosporine
#4174	TPA (12-O-Tetradecanoylphorbol-13-Acetate)
#9950	Trichostatin A (TSA)
#9842	Tyrphostin AG 1478
#9903	U0126 (MEK1/2 Inhibitor)
#9951	Wortmannin



Staurosporine #9953: Confocal IF analysis of HeLa cells, untreated (left) or treated with #9953 (right), using the PathScan® Apoptosis and Proliferation Multiplex IF Kit #7851. Red = α -tubulin, green = phospho-Histone H3 (Ser10), and blue = cleaved-PARP (Asp214).

SignalSilence® siRNA

SignalSilence® siRNA reagents allow the researcher to specifically inhibit protein expression. Two equally potent siRNAs are available for most targets.

Cytokines and Growth Factors

Cell Signaling Technology (CST) has developed recombinant cytokines and growth factors which are held to the same unparalleled quality standards as CST™ antibodies.

Visit www.cellsignal.com to view the most up-to-date product listing or to request more literature.





Cell Signaling
TECHNOLOGY®

USA Headquarters

Cell Signaling Technology

Technical Support: (toll-free) 1-877-678-8324

Tel: 978-867-2300 / Fax: 978-867-2400

E-mail: info@cellsignal.com / www.cellsignal.com

In the U.S. for Bulk Volumes or Pricing Information,
contact our sales team: sales@cellsignal.com

International Subsidiaries

Cell Signaling Technology (China) Limited

Technical Support: (toll-free) 4006 GreatQ (473287)

Tel: (86) 21-5835-6288 / Fax: (86) 21-5835-6116

E-mail: info@cst-c.com.cn / www.cst-c.com.cn

Cell Signaling Technology Japan, K.K.

Tel: 03 (5652) 0213 / Fax: 03 (3249) 1170


E-mail: info@cstj.co.jp / www.cstj.co.jp

Cell Signaling Technology Europe

Tel: +31 (0)71 568 1060 / Fax: +31 (0)71 568 1065

E-mail: info@cellsignal.eu / www.cellsignal.eu

ANTIBODIES AND RELATED REAGENTS FOR SIGNAL TRANSDUCTION RESEARCH

 Printed in the USA on recycled paper using soy inks and processed chlorine free.

© 04/2011 Cell Signaling Technology, Inc.

Phototope®, SignalStain®, SignalSlide®, SignalSilence®, XP™, XMT®, eXceptional Performance™, SimpleChIP®, Cell Signaling Technology®, CST™, and PathScan® are trademarks of Cell Signaling Technology, Inc. The Alexa Fluor® dye conjugated secondary antibodies are sold under license from Invitrogen, Inc., for research use only in immunocytochemistry, immunohistochemistry, high content screening (HCS) analysis, or flow cytometry applications. / Selected rabbit monoclonal antibodies are produced under license (granting certain rights including those under U. S. Patents No. 5,675,063 and in some instances 7,429,487) from Epitomics, Inc. / DRAQ5® is a registered trademark of Biostatus Limited. / Anti-FLAG® is a trademark of Sigma-Aldrich. / LumiGLO® is a trademark of Kirkegaard & Perry Laboratories. / DyLight® is a trademark of Thermo Fisher Scientific, Inc. and its subsidiaries. / Alexa Fluor® and SYBR® are trademarks of Molecular Probes, Inc.

All content of this Brochure and Technical Reference is protected by U.S. and foreign intellectual property laws. You may not copy, modify, upload, download, post, transmit, republish or distribute any of the content without our prior written permission except for your own personal and non-commercial purposes. Except as provided in the preceding sentence, nothing contained in this Brochure and Technical Reference shall be construed as granting a license or other rights under any patent, trademark, copyright or other intellectual property of Cell Signaling Technology or any third party. Unauthorized use of any Cell Signaling Technology trademark, service mark or logo may be a violation of federal and state trademark laws.