



Cell Signaling
TECHNOLOGY®

Exploring Signaling Pathways using Antibody Sampler Kits



www.cellsignal.com

UNPARALLELED PRODUCT QUALITY, VALIDATION, AND TECHNICAL SUPPORT

Antibody Sampler Kits

Cell Signaling Technology (CST) offers numerous Antibody Sampler Kits that provide researchers with an economical means to investigate various aspects of cellular signaling. CST™ Antibody Sampler Kits contain sample sizes of several antibodies directed against a protein, pathway, or cellular process of interest, as well as secondary antibodies needed for detection and analysis. Each kit contains enough primary and secondary antibodies to perform four Western blots per target.

- 125 Antibody Sampler Kits and more coming soon – you'll find the one that works for you.
 - Kits contain sample sizes of our catalog antibodies.
 - Get everything you need to analyze a pathway at a fraction of the cost of full-size vials.
 - Secondary antibodies are also included.
- And our commitment to quality means the most reproducible results in all validated applications.

XP™ *Monoclonal Antibodies*

XP™ Monoclonal Antibodies are a line of high quality rabbit monoclonal antibodies exclusively available from Cell Signaling Technology. Any product labeled with XP has been carefully selected based on superior performance in all approved applications.

XP Monoclonal Antibodies are generated using XMT™, a proprietary monoclonal technology developed at Cell Signaling Technology. The technology provides access to a broad range of antibody-producing B cells unattainable with traditional monoclonal technologies, allowing more comprehensive screening and the identification of XP monoclonal antibodies with:

exceptional specificity

As with all CST™ antibodies, the antibody is specific to your target of interest, saving you valuable time and resources.

+ exceptional sensitivity

The antibody will provide a stronger signal for your target protein in cells and tissues, allowing you to monitor expression of low levels of endogenous proteins, saving you valuable materials.

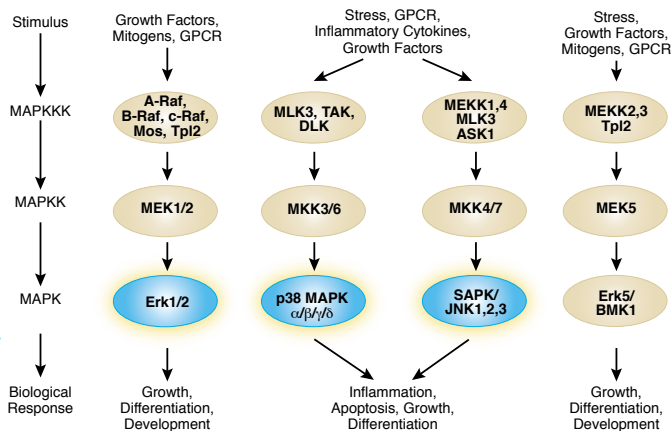
+ exceptional stability and reproducibility

XMT combined with our stringent quality control ensures maximum lot-to-lot consistency and the most reproducible results.

= eXceptional Performance™

XMT coupled with our extensive antibody validation and stringent quality control delivers XP monoclonal antibodies with eXceptional Performance in the widest range of applications.

MAPK Signaling



c-Oncogene Antibody Sampler Kit #9328

- c-Abl Antibody #2862
- c-Fos (9F6) Rabbit mAb #2250
- c-Jun (60A8) Rabbit mAb #9165
- c-Kit (D13A2) XP™ Rabbit mAb #3074
- c-Myc Antibody #9402
- c-Raf Antibody #9422
- Ras (27H5) Rabbit mAb #3339
- c-Rel Antibody #4727
- Src (36D10) Rabbit mAb #2109

Phospho-Erk1/2 Pathway Sampler Kit #9911

- Phospho-MEK1/2 (Ser217/221) (41G9) Rabbit mAb #9154
- Phospho-MSK1 (Thr581) Antibody #9595
- Phospho-p44/42 MAPK (Erk1/2) (Thr202/Tyr204) (D13.14.4E) XP™ Rabbit mAb #4370
- Phospho-p90RSK (Ser380) (9D9) Rabbit mAb #9335
- Phospho-c-Raf (Ser338) (56A6) Rabbit mAb #9427
- U0126 (MEK1/2 Inhibitor) #9903

Phospho-MAPK Family Antibody Sampler Kit #9910

- Phospho-p38 MAPK (Thr180/Tyr182) (D3F9) XP™ Rabbit mAb #4511
- Phospho-p44/42 MAPK (Erk1/2) (Thr202/Tyr204) (D13.14.4E) XP™ Rabbit mAb #4370
- Phospho-SAPK/JNK (Thr183/Tyr185) (81E11) Rabbit mAb #4668
- U0126 (MEK1/2 Inhibitor) #9903

MAPK Family Antibody Sampler Kit #9926

- p44/42 MAPK (Erk1/2) (137F5) Rabbit mAb #4695
- p38 MAPK Antibody #9212
- SAPK/JNK (56G8) Rabbit mAb #9258

MAPKAPK-2 Antibody Sampler Kit #9329

- Phospho-MAPKAPK-2 (Thr222) (9A7) Rabbit mAb #3316
- Phospho-MAPKAPK-2 (Thr334) (27B7) Rabbit mAb #3007
- MAPKAPK-2 Antibody #3042

Phospho-p38 MAPK Pathway Sampler Kit #9913

- Phospho-ATF-2 (Thr71) (11G2) Rabbit mAb #5112
- Phospho-HSP27 (Ser82) Antibody #2401
- Phospho-MAPKAPK-2 (Thr334) (27B7) Rabbit mAb #3007
- Phospho-MKK3/MKK6 (Ser189/207) (22A8) Rabbit mAb #9236
- Phospho-MSK1 (Thr581) Antibody #9595
- Phospho-p38 MAPK (Thr180/Tyr182) (D3F9) XP™ Rabbit mAb #4511

COMING SOON p38 MAPK Isoform Activation Antibody Sampler Kit #9790

- Phospho-p38 MAPK (Thr180/Tyr182) (D3F9) XP™ Rabbit mAb #4511
- p38α MAPK Antibody #9218
- p38β MAPK (C28C2) Rabbit mAb #2339
- p38γ MAPK Antibody #2307
- p38δ MAPK (10A8) Rabbit mAb #2308

p90RSK Antibody Sampler Kit #9326

- Phospho-p90RSK (Thr359/Ser363) Antibody #9344
- Phospho-p90RSK (Ser380) (9D9) Rabbit mAb #9335
- Phospho-p90RSK (Thr573) Antibody #9346
- RSK1/RSK2/RSK3 (32D7) Rabbit mAb #9335

Raf Family Antibody Sampler Kit #2330

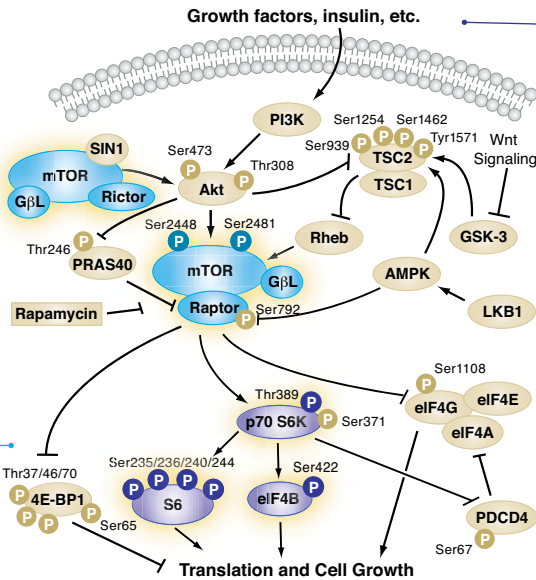
- Phospho-A-Raf (Ser299) Antibody #4431
- A-Raf Antibody #4432
- Phospho-B-Raf (Ser445) Antibody #2696
- B-Raf (L12G7) Mouse mAb #9434
- Phospho-c-Raf (Ser259) Antibody #9421
- Phospho-c-Raf (Ser289/296/301) Antibody #9431
- Phospho-c-Raf (Ser338) (56A6) Rabbit mAb #9427
- c-Raf Antibody #9422

Phospho-SAPK/JNK Pathway Antibody Sampler Kit #9912

- Phospho-ATF-2 (Thr71) Antibody #9221
- Phospho-c-Jun (Ser63) II Antibody #9261
- Phospho-SAPK/JNK (Thr183/Tyr185) (81E11) Rabbit mAb #4668
- Phospho-SEK1/MKK4 (Thr261) Antibody #9151

Note: Secondary antibodies are included in all kits (not listed).

Translational Control



mTOR Regulation Antibody Sampler Kit #9864

- Phospho-mTOR (Ser2448) Antibody #2971
- mTOR (7C10) Rabbit mAb #2983
- Phospho-Raptor (Ser792) Antibody #2083
- Phospho-PRAS40 (Thr246) (C7D7D) Rabbit mAb #2997
- PRAS40 (D23C7) XP™ Rabbit mAb #2691
- RagC Antibody #3360

mTOR Substrates Antibody Sampler Kit #9862

- Phospho-4E-BP1 (Thr37/46) (236B4) Rabbit mAb #2855
- Phospho-mTOR (Ser2448) Antibody #2971
- mTOR (7C10) Rabbit mAb #2983
- Phospho-p70 S6 Kinase (Ser371) Antibody #9208
- Phospho-p70 S6 Kinase (Thr389) (108D2) Rabbit mAb #9234

p70 S6 Kinase Substrates Antibody Sampler Kit #2903

- Phospho-eEF2k (Ser366) Antibody #3691
- Phospho-eIF4B (Ser422) Antibody #3591
- Phospho-p70 S6 Kinase (Thr389) (108D2) Rabbit mAb #9234
- p70 S6 Kinase (49D7) Rabbit mAb #2708
- Phospho-S6 Ribosomal Protein (Ser235/236) (D57.2.2E) XP™ Rabbit mAb #4858
- Phospho-S6 Ribosomal Protein (Ser240/244) (D68F8) XP™ Rabbit mAb #5364

4E-BP Antibody Sampler Kit #9955

- Phospho-4E-BP1 (Thr37/46) (236B4) Rabbit mAb #2855
- Nonphospho-4E-BP1 (Thr46) (87D12) Rabbit mAb #4923
- Phospho-4E-BP1 (Ser65) Antibody #9451
- Phospho-4E-BP1 (Thr70) Antibody #9455
- 4E-BP1 (53H11) Rabbit mAb #9644
- 4E-BP2 Antibody #2845

ER Protein Folding Antibody Sampler Kit #4759

- BiP (C50B12) Rabbit mAb #3177
- Ero1-La Antibody #3264
- ERp44 Antibody #2886
- ERp57 (G117) Antibody #2881
- ERp72 Antibody #2798
- Grp94 Antibody #2104
- PDI Antibody #2446

ER Stress Antibody Sampler Kit #9956

- BiP (C50B12) Rabbit mAb #3177
- Calnexin (C5C9) Rabbit mAb #2679
- CHOP (L63F7) Mouse mAb #2895
- Ero1-La Antibody #3264
- IRE1α (14C10) Rabbit mAb #3294
- PDI (C81H6) Rabbit mAb #3501
- PERK (C33E10) Rabbit mAb #3192

mTOR Pathway Antibody Sampler Kit #9964

- GβL (86B8) Rabbit mAb #3274
- Phospho-mTOR (Ser2448) Antibody #2971
- Phospho-mTOR (Ser2481) Antibody #2974
- mTOR (7C10) Rabbit mAb #2983
- Raptor (24C12) Rabbit mAb #2280
- Rictor (53A2) Rabbit mAb #2114

NEW Rag Protein Antibody Sampler Kit #9778

- RagA (D8B5) Rabbit mAb # 4357
- RagB Antibody # 3830
- RagC Antibody # 3360
- RagD Antibody # 4470
- Raptor (24C12) Rabbit mAb # 2280
- mTOR (7C10) Rabbit mAb # 2983

NEW RNAi Machinery Antibody Sampler Kit #4487

- Argonaute 2 (C34C6) Rabbit mAb #2897
- Dicer Antibody #3363
- Drosha (D28B1) Rabbit mAb #3364
- Mili Antibody #2071

Translational Control Antibody Sampler Kit #9918

- Phospho-4E-BP1 (Thr37/46) (236B4) Rabbit mAb #2855
- Phospho-Akt (Ser473) (D9E) XP™ Rabbit mAb #4060
- Phospho-eIF2α (Ser51) (D9G8) XP™ Rabbit mAb #3398
- Phospho-eIF4E (Ser209) Antibody #9741
- Phospho-p70 S6 Kinase (Thr389) (108D2) Rabbit mAb #9234
- Rapamycin (FRAP/mTOR Inhibitor) #9904
- Phospho-S6 Ribosomal Protein (Ser235/236) (D57.2.2E) XP™ Rabbit mAb #4858
- LY294002 (PI3 Kinase Inhibitor) #9901

Translation Initiation Complex Antibody Sampler Kit #4763

- eIF4A1 Antibody #2490
- eIF4A (C32B4) Rabbit mAb #2013
- Phospho-eIF4B (Ser422) Antibody #3591
- eIF4B Antibody #3592
- Phospho-eIF4E (Ser209) Antibody #9741
- eIF4E (C46H6) Rabbit mAb #2067
- Phospho-eIF4G (Ser1108) Antibody #2441
- eIF4G (C45A4) Rabbit mAb #2469
- eIF4H Antibody #2444

Note: Secondary antibodies are included in all kits (not listed).

Please check our website for a complete listing of kits and up-to-date kit components

Apoptosis and Autophagy

Autophagy Antibody Sampler Kit #4445

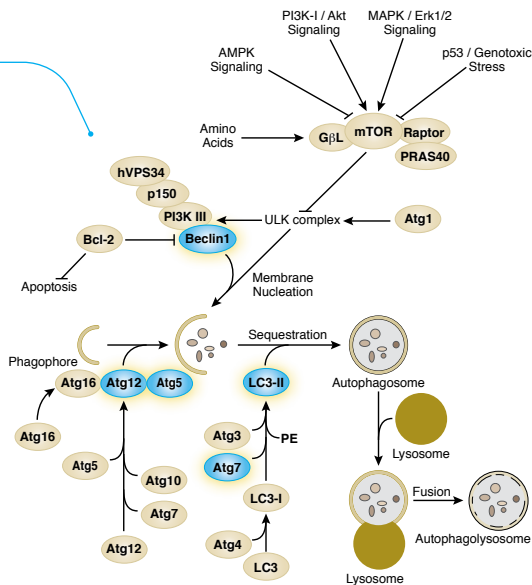
- Atg3 Antibody #3415
- Atg5 Antibody #2630
- Atg7 Antibody #2631
- Atg12 (D88H11) Rabbit mAb #4180
- Beclin-1 (D40C5) Rabbit mAb #3495
- LC3A (D50G8) XP™ Rabbit mAb #4599
- LC3B (D11) XP™ Rabbit mAb #3868

Apoptosis Antibody Sampler Kit #9915

- Cleaved Caspase-3 (Asp175) (5A1E) Rabbit mAb #9664
- Caspase-3 Antibody #9662
- Cleaved Caspase-7 (Asp198) Antibody #9491
- Caspase-7 Antibody #9492
- Cleaved Caspase-9 (Asp330) Antibody (Human Specific) #9501
- Caspase-9 Antibody (Human Specific) #9502
- Cleaved PARP (Asp214) Antibody (Human Specific) #9541
- PARP Antibody #9542

Apoptosis Antibody Sampler Kit (Mouse Specific) #9930

- Cleaved Caspase-3 (Asp175) (5A1E) Rabbit mAb #9664
- Caspase-3 Antibody #9662
- Cleaved Caspase-6 (Asp162) Antibody #9761
- Caspase-6 Antibody #9762
- Cleaved Caspase-9 (Asp353) Antibody (Mouse Specific) #9509
- Caspase-9 Antibody (Mouse Specific) #9504
- Caspase-12 Antibody #2202
- Cleaved PARP (Asp214) Antibody (Mouse Specific) #9544



Pro-Apoptosis Bcl-2 Family Antibody Sampler Kit #9942

- Phospho-Bad (Ser112) (40A9) Rabbit mAb #5284
- Bad (D24A9) Rabbit mAb #9239
- Bax (D2E11) Rabbit mAb #5023
- BID Antibody (Human Specific) #2002
- Bik Antibody #4592
- Bim (C34C5) Rabbit mAb #2933
- Bok Antibody #4521
- Puma Antibody #4976

Phospho-Bad Antibody Sampler Kit #9105

- Phospho-Bad (Ser112) (7E11) Mouse mAb #9296
- Phospho-Bad (Ser136) (185D10) Rabbit mAb #5286
- Phospho-Bad (Ser155) Antibody #9297
- Bad (D24A9) Rabbit mAb #9239
- pCMV-Tag4A-mBad/GrpE

Cleaved Caspase Antibody Sampler Kit #9929

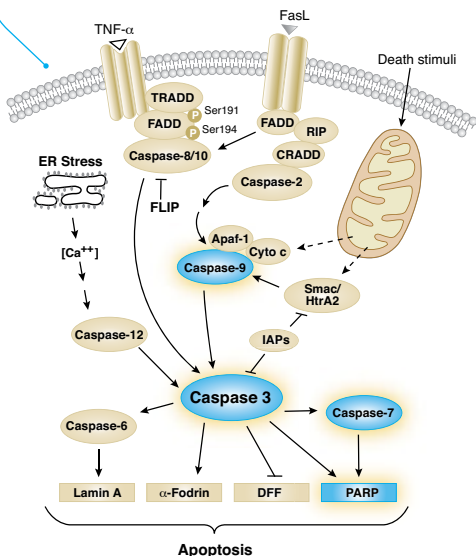
- Cleaved Caspase-3 (Asp175) (5A1E) Rabbit mAb #9664
- Cleaved Caspase-6 (Asp162) Antibody #9761
- Cleaved Caspase-7 (Asp198) Antibody #9491
- Cleaved Caspase-9 (Asp315) Antibody (Human Specific) #9505
- Cleaved Caspase-9 (Asp330) Antibody (Human Specific) #9501
- Cleaved PARP (Asp214) Antibody (Human Specific) #9541

NEW Inhibitors of Apoptosis Antibody Sampler Kit #9770

- c-IAP1 Antibody #4952
- c-IAP2 (58C7) Rabbit mAb #3130
- Survivin (71G4B7) Rabbit mAb #2808
- XIAP (3B6) Rabbit mAb #2045

Pro-Survival Bcl-2 Family Antibody Sampler Kit (Human Specific) #9941

- Phospho-Bcl-2 (Thr56) Antibody (Human Specific) #2875
- Phospho-Bcl-2 (Ser70) (5H2) Rabbit mAb #2827
- Bcl-2 (50E3) Rabbit mAb #2870
- Bcl-xL (54H6) Rabbit mAb #2764
- Mcl-1 Antibody #4572



Immunology and Inflammation

COMING SOON B Cell Signaling Antibody Sampler Kit #9768

- Phospho-Btk (Tyr223) Antibody #5082
- Btk Antibody #3532
- Phospho-CD19 (Tyr531) Antibody #3571
- CD19 Antibody #3574
- Phospho-Lyn (Tyr507) Antibody #2731
- Lyn Antibody #2732
- Phospho-Syk (Tyr525/526) (C87C1) Rabbit mAb #2710
- Syk Antibody #2712

Phospho-IKK α/β (Ser176/180) Antibody Sampler Kit #9958

- Phospho-IKK α (Ser176)/IKK β (Ser177) (C84E11) Rabbit mAb #2078
- Phospho-IKK α/β (Ser176/180) (16A6) Rabbit mAb #2697
- Phospho-IKK α/β (Ser176/180) Antibody II #2694

IKK Isoform Antibody Sampler Kit #9966

- IKK α Antibody #2682
- IKK β Antibody #2684
- IKK ϵ Antibody #2690
- IKK γ Antibody #2685

IRAK Isoform Antibody Sampler Kit #4769

- IRAK1 (D51G7) XPTM Rabbit mAb #4504
- IRAK2 Antibody #4367
- IRAK4 Antibody #4363
- IRAK-M Antibody #4369

Jak Isoform Antibody Sampler Kit #9945

- Jak1 (6G4) Rabbit mAb #3344
- Jak2 (D2E12) XPTM Rabbit mAb #3230
- Jak3 Antibody #3775

NF- κ B Pathway Antibody Sampler Kit #9936

- Phospho-I κ B α (Ser32) (14D4) Rabbit mAb #2859
- I κ B α (L35A5) Mouse mAb (Amino-terminal Antigen) #4814
- Phospho-IKK α (Ser176)/IKK β (Ser177) (C84E11) Rabbit mAb #2078
- IKK α Antibody #2682
- IKK β (2C8) Rabbit mAb #2370
- Phospho-NF- κ B p65 (Ser536) (93H1) Rabbit mAb #3033
- NF- κ B p65 (E498) Antibody #3987

NF- κ B Non-Canonical Pathway Antibody Sampler Kit #4888

- Phospho-IKK α (Ser176)/IKK β (Ser177) (C84E11) Rabbit mAb #2078
- IKK α Antibody #2682
- Phospho-NF- κ B2 p100 (Ser866/870) Antibody #4810
- NF- κ B2 p100/p52 Antibody #4882
- NIK Antibody #4994
- RelB (C1E4) Rabbit mAb #4922
- TRAF2 Antibody #4712
- TRAF3 Antibody #4729

NF- κ B Family Member Antibody Sampler Kit #4766

- NF- κ B p65 (E498) Antibody #3987
- NF- κ B2 p100/p52 (18D10) Rabbit mAb (Human Specific) #3017
- NF- κ B2 p100/p52 Antibody #4882
- NF- κ B1 p105 Antibody #4717
- NF- κ B1 p105/p50 Antibody #3035
- c-Rel Antibody #4727
- RelB (C1E4) Rabbit mAb #4922

NF- κ B p65 Antibody Sampler Kit #4767

- Phospho-NF- κ B p65 (Ser276) Antibody #3037
- Phospho-NF- κ B p65 (Ser536) (93H1) Rabbit mAb #3033
- Acetyl-NF- κ B p65 (Lys310) Antibody #3045
- NF- κ B p65 (E498) Antibody #3987
- Phospho-NF- κ B p65 (Ser468) Antibody #3039

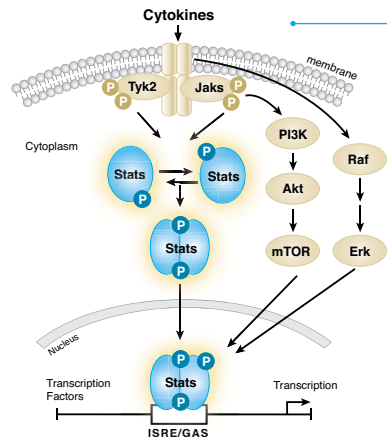
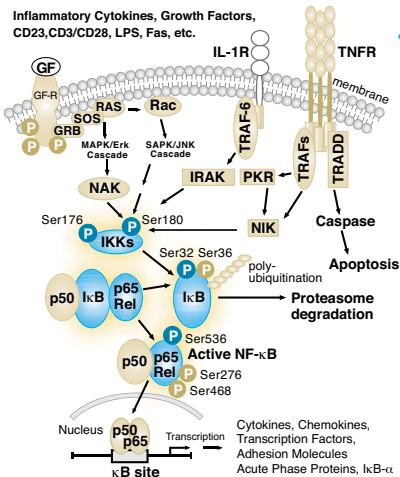
COMING SOON Pim Kinase Antibody Sampler Kit #9779

- Phospho-Bad (Ser112) (40A9) Rabbit mAb #5284
- Bad (D24A9) Rabbit mAb #9239
- Pim-1 (C93F2) Rabbit mAb #3247
- Pim-2 (D1D2) XPTM Rabbit mAb #4730
- Pim-3 (D17C9) Rabbit mAb #4165

Phospho-Stat Antibody Sampler Kit #9914

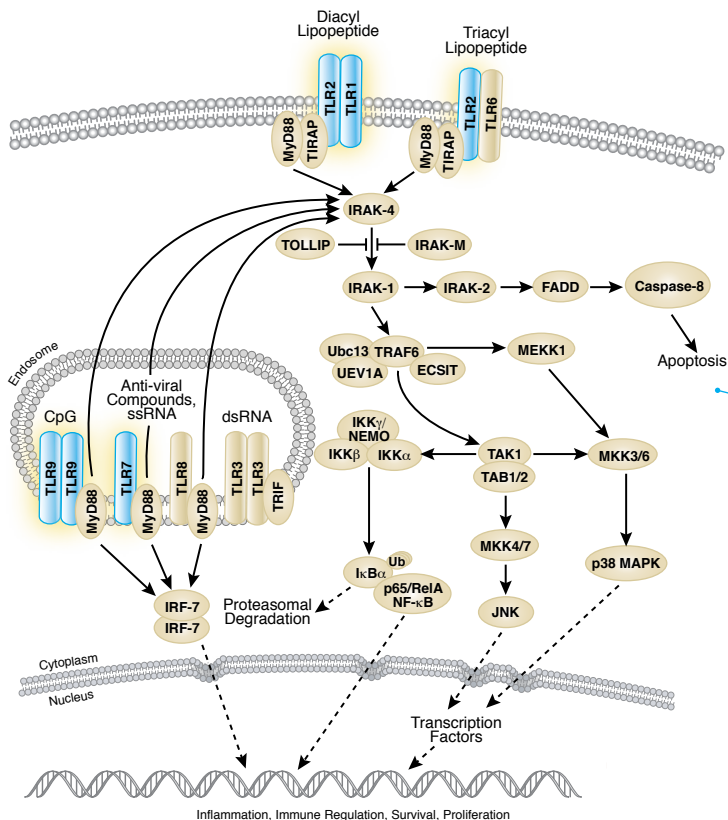
- Phospho-Stat1 (Tyr701) Antibody #9171
- Phospho-Stat2 (Tyr690) Antibody #4441
- Phospho-Stat3 (Tyr705) (D3A7) XPTM Rabbit mAb #9145
- Phospho-Stat3 (Ser727) Antibody #9134
- Phospho-Stat5 (Tyr694) (C11C5) Rabbit mAb #9359
- Phospho-Stat6 (Tyr641) Antibody #9361

Inflammatory Cytokines, Growth Factors,
CD23, CD3/CD28, LPS, Fas, etc.



Note: Secondary antibodies are included in all kits (not listed).

Please check our website for a complete listing of kits and up-to-date kit components



Stat Antibody Sampler Kit #9939

- Stat1 Antibody #9172
- Stat3 Antibody #9132
- Stat5 Antibody #9363
- Stat6 Antibody #9362

Phospho-Syk Antibody Sampler Kit #9925

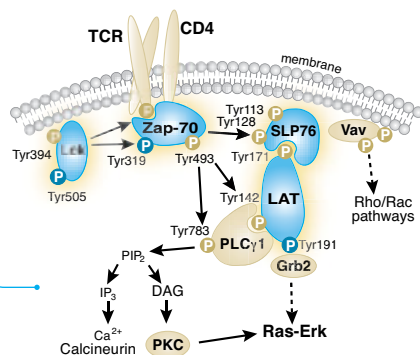
- Phospho-Syk (Tyr323) Antibody #2715
- Phospho-Syk (Tyr525/526) Antibody #2711
- Syk Antibody #2712
- Phospho-Zap-70 (Tyr319)/Syk (Tyr352) Antibody #2701

Toll-like Receptor Antibody Sampler Kit #9971

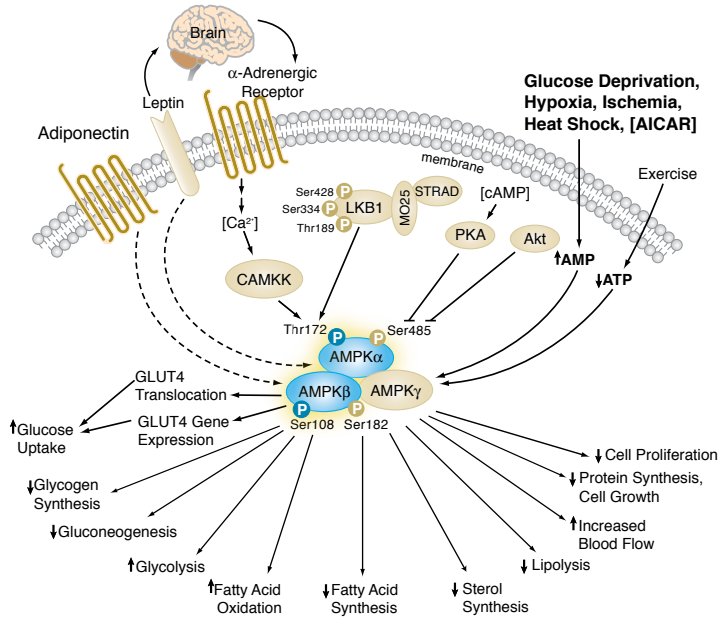
- Toll-like Receptor 1 Antibody #2209
- Toll-like Receptor 2 Antibody #2229
- Toll-like Receptor 7 Antibody #2633
- Toll-like Receptor 9 Antibody #2254

T Cell Signaling Antibody Sampler Kit #9382

- Phospho-LAT (Tyr191) Antibody #3584
- LAT Antibody #9166
- Phospho-Lck (Tyr505) Antibody #2751
- Lck (73A5) Rabbit mAb #2787
- SLP-76 Antibody #4958
- Phospho-Zap-70 (Tyr319)/Syk (Tyr352) (65E4) Rabbit mAb #2717
- Zap-70 (D1C10E) XP™ Rabbit mAb #3165



Glucose Metabolism



AMPK Subunit Antibody Sampler Kit #9839

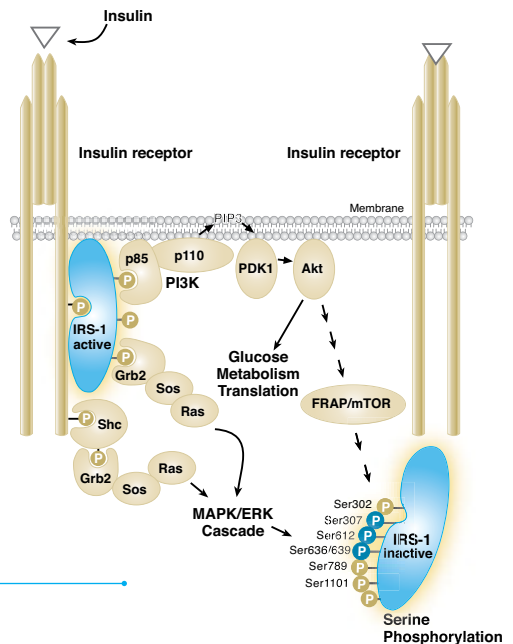
- AMPKα (23A3) Rabbit mAb #2603
- AMPKα2 Antibody #2757
- AMPKβ1 (71C10) Rabbit mAb #4178
- AMPKβ2 Antibody #4148
- AMPKγ1 Antibody #4187
- AMPKγ2 Antibody #2536
- AMPKγ3 Antibody #2550

AMPK and ACC Antibody Sampler Kit #9957

- Phospho-Acetyl-CoA Carboxylase (Ser79) Antibody #3661
- Acetyl-CoA Carboxylase (C83B10) Rabbit mAb #3676
- Phospho-AMPKα (Thr172) (40H9) Rabbit mAb #2535
- AMPKα (23A3) Rabbit mAb #2603
- Phospho-AMPKβ1 (Ser108) Antibody #4181
- AMPKβ1/2 (57C12) Rabbit mAb #4150

Insulin Receptor Substrate Antibody Sampler Kit #3015

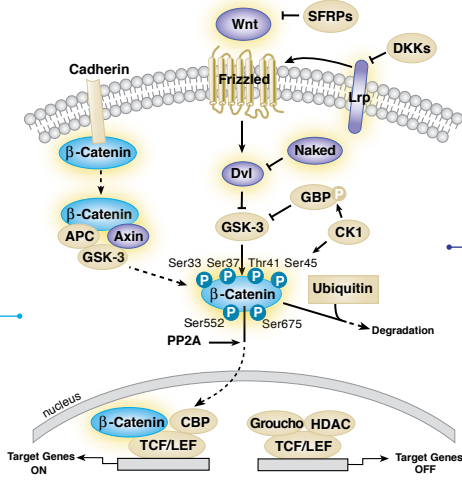
- Phospho-IRS-1 (Ser307) Antibody #2381
- Phospho-IRS-1 (Ser612) (C15H5) Rabbit mAb #3203
- Phospho-IRS-1 (Ser636/639) Antibody #2388
- IRS-1 Antibody #2382
- IRS-2 Antibody #4502



Note: Secondary antibodies are included in all kits (not listed).

Please check our website for a complete listing of kits and up-to-date kit components

Development and Differentiation



β-Catenin Antibody Sampler Kit #2951

- Phospho-β-Catenin (Ser33/37/Thr41) Antibody #9561
- Phospho-β-Catenin (Thr41/Ser45) Antibody #9565
- Phospho-β-Catenin (Ser552) Antibody #9566
- Phospho-β-Catenin (Ser675) Antibody #9567
- β-Catenin (6B3) Rabbit mAb #9582

Notch Isoform Antibody Sampler Kit #3640

- Cleaved Notch1 (Val1744) (D3B8) Rabbit mAb #4147
- Notch1 (D1E11) XP™ Rabbit mAb #3608
- Notch2 (8A1) Rabbit mAb #2420
- Notch3 Antibody #2889

Phospho-Smad Antibody Sampler Kit #9963

- Smad1 Antibody #9743
- Phospho-Smad1/5 (Ser463/465) (41D10) Rabbit mAb #9516
- Phospho-Smad2 (Ser465/467) (138D4) Rabbit mAb #3108
- Smad2 (D43B4) XP™ Rabbit mAb #5339
- Phospho-Smad3 (Ser423/425) (C25A9) Rabbit mAb #9520
- Smad3 (C67H9) Rabbit mAb #9523
- Smad4 Antibody #9515
- Smad5 Antibody #9517
- Smad6 Antibody #9519

TCF/LEF1 Antibody Sampler Kit #9383

- LEF1 (C12A5) Rabbit mAb #2230
- TCF1 (C63D9) Rabbit mAb #2203
- TCF3 (D15G11) Rabbit mAb #2883
- TCF4 (C48H11) Rabbit mAb #2569

Wnt Signaling Antibody Sampler Kit #2915

- Axin1 (C76H11) Rabbit mAb #2087
- Dvl2 (30D2) Rabbit mAb #3224
- Dvl3 Antibody #3218
- Phospho-LRP6 (Ser1490) Antibody #2568
- LRP6 (C5C7) Rabbit mAb #2560
- Naked1 (C30F10) Rabbit mAb #2201
- Naked2 (C67C4) Rabbit mAb #2073
- Wnt3a (C64F2) Rabbit mAb #2721
- Wnt5a/b (C27E8) Rabbit mAb #2530

Chromatin/Epigenetic Regulation

Histone Deacetylase (HDAC) Antibody Sampler Kit #9928

- HDAC1 (10E2) Mouse mAb # 5356
- HDAC2 (3F3) Mouse mAb # 5113
- HDAC3 (7G6C5) Mouse mAb # 3949
- HDAC4 (4A3) Mouse mAb # 5392
- Histone Deacetylase 5 (HDAC5) Antibody # 2082
- Histone Deacetylase 7 (HDAC7) Antibody # 2882

Acetyl-Histone Antibody Sampler Kit #9933

- Acetyl-Histone H2A (Lys5) Antibody #2576
- Histone H2A Antibody II #2578
- Acetyl-Histone H2B (Lys5) Antibody #2574
- Histone H2B Antibody #2722
- Acetyl-Histone H3 (Lys9) (C5B11) Rabbit mAb # 9649
- Histone H3 (D1H2) XP™ Rabbit mAb # 4499
- Acetyl-Histone H4 (Lys8) Antibody #2594
- Histone H4 Antibody #2592

Acetyl-Histone H3 Antibody Sampler Kit #9927

- Phospho-Histone H3 (Ser10) Antibody #9701
- Acetyl- and Phospho-Histone H3 (Lys9/Ser10) Antibody #9711
- Acetyl-Histone H3 (Lys9) Antibody #9671
- Acetyl-Histone H3 (Lys18) Antibody #9675
- Acetyl-Histone H3 (Lys23) Antibody #9674
- Histone H3 (D1H2) XP™ Rabbit mAb #4499

Methyl-Histone H3 Antibody Sampler Kit #9847

- Di-Methyl-Histone H3 (Lys4) (C64G9) Rabbit mAb # 9725
- Di-Methyl-Histone H3 (Lys9) Antibody # 9753
- Di-Methyl-Histone H3 (Lys27) (D18C8) XP™ Rabbit mAb # 9728
- Di-Methyl-Histone H3 (Lys36) (C75H12) Rabbit mAb # 2901
- Di-Methyl-Histone H3 (Lys79) Antibody # 9757
- Histone H3 (D1H2) XP™ Rabbit mAb #4499

COMING SOON Tri-methyl Histone H3 Antibody Sampler Kit #9783

- Tri-Methyl-Histone H3 (Lys4) (C42D8) Rabbit mAb #9751
- Tri-Methyl-Histone H3 (Lys9) Antibody #9754
- Tri-Methyl-Histone H3 (Lys27) (C36B11) Rabbit mAb #9733
- Tri-Methyl-Histone H3 (Lys36) (D5A7) XP™ Rabbit mAb #4909
- Histone H3 (D1H2) XP™ Rabbit mAb #4499

Phospho-Histone H3 (Mitotic Marker) Antibody Sampler Kit #9849

- Phospho-Histone H3 (Thr3) Antibody #9714
- Phospho-Histone H3 (Ser10) Antibody #9701
- Phospho-Histone H3 (Thr11) Antibody #9764
- Phospho-Histone H3 (Ser28) Antibody #9713
- Histone H3 (D1H2) XP™ Rabbit mAb #4499

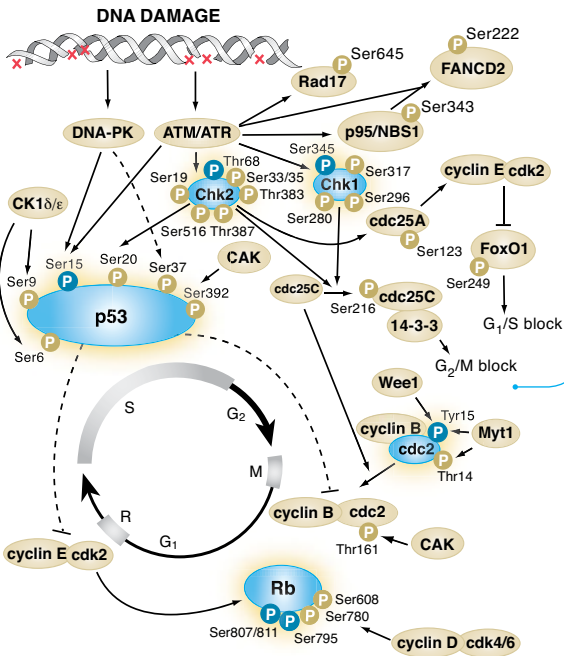
COMING SOON Polycomb Group Proteins Antibody Sampler Kit #9788

- Bmi1 Antibody #2830
- Ezh2 (D2C9) XP™ Rabbit mAb #5246
- Ring1A Antibody #2820
- SUZ12 (D39F6) XP™ Rabbit mAb #3737

COMING SOON Sirtuin Antibody Sampler Kit #9787

- Phospho-Sirt1 (Ser47) Antibody #2314
- Sirt1 (D739) Antibody #2493
- Sirt2 Antibody #2313
- Sirt3 (C73E3) Rabbit mAb #2627
- Sirt6 Antibody #2590
- Sirt7 (D12D11) XP™ Rabbit mAb #5360

Cell Cycle / Checkpoint Control



NEW Cell Cycle Regulation Antibody Sampler Kit II #9870

- Phospho-cdc2 (Tyr15) Antibody #9111
- Cyclin A (BF683) Mouse mAb #4656
- Cyclin B1 Antibody #4138
- Cyclin E2 Antibody #4132
- Phospho-Histone H3 (Ser10) (D2C8) XP™ Rabbit mAb #3377
- Myt1 Antibody #4282
- p21 Waf1/Cip1 (12D1) Rabbit mAb #2947
- Phospho-Wee1 (Ser642) (D47G5) Rabbit mAb #4910

Cell Cycle/Checkpoint Antibody Sampler Kit #9917

- Phospho-cdc2 (Tyr15) Antibody #9111
- Phospho-Chk1 (Ser345) Antibody #2341
- Phospho-Chk2 (Thr68) Antibody #2661
- Phospho-p53 (Ser15) (16G8) Mouse mAb #9286
- Phospho-Rb (Ser795) Antibody #9301
- Phospho-Rb (Ser807/811) Antibody #9308

Cyclin Antibody Sampler Kit #9869

- Cyclin A (BF683) Mouse mAb #4656
- Cyclin B1 Antibody #4138
- Cyclin D1 (92G2) Rabbit mAb #2978
- Cyclin D2 (D52F9) Rabbit mAb #3741
- Cyclin D3 (DCS22) Mouse mAb #2936
- Cyclin E2 Antibody #4132
- Cyclin E (HE12) Mouse mAb #4129
- Cyclin H Antibody #2927

Aurora Antibody Sampler Kit #3875

- Phospho-Aurora A (Thr288) (C39D8) Rabbit mAb #3079
- Phospho-Aurora A (Thr288)/Aurora B (Thr232)/Aurora C (Thr198) (D13A11) XP™ Rabbit mAb #2914
- Aurora A/AIK (1G4) Rabbit mAb #4718
- Aurora B/AIM1 Antibody #3094

cdc25C Antibody Sampler Kit #9555

- Phospho-cdc25C (Thr48) Antibody #9527
- Phospho-cdc25C (Ser216) (63F9) Rabbit mAb #4901
- cdc25C (5H9) Rabbit mAb #4688

CDK Antibody Sampler Kit #9868

- cdc2 Antibody #9112
- CDK2 (78B2) Rabbit mAb #2546
- CDK4 (DCS156) Mouse mAb #2906
- CDK6 (DCS83) Mouse mAb #3136
- CDK7 (MO1) Mouse mAb #2916
- CDK9 (C12F7) Rabbit mAb #2316

Cell Cycle Regulation Antibody Sampler Kit #9932

- CDK4 (DCS156) Mouse mAb #2906
- CDK6 (DCS83) Mouse mAb #3136
- Cyclin D1 (DCS6) Mouse mAb #2926
- Cyclin D3 (DCS22) Mouse mAb #2936
- p15 INK4B Antibody #4822
- p16 INK4A Antibody #4824
- p21 Waf1/Cip1 (DCS60) Mouse mAb #2946
- p27 Kip1 Antibody #2552

Cyclin Dependent Kinase Inhibitor Antibody Sampler Kit #9867

- p15 INK4B Antibody #4822
- p16 INK4A Antibody #4824
- p18 INK4C (DCS118) Mouse mAb #2896
- p21 Waf1/Cip1 (12D1) Rabbit mAb #2947
- p27 Kip1 (SK53G8.5) Mouse mAb #3698
- p57 Kip2 Antibody #2557

NEW Polo-like Kinase Antibody Sampler Kit #9785

- PLK1 (208G4) Rabbit mAb #4513
- PLK3 (D14F12) Rabbit mAb #4896
- PLK4 Antibody #3258

Rb Antibody Sampler Kit #9969

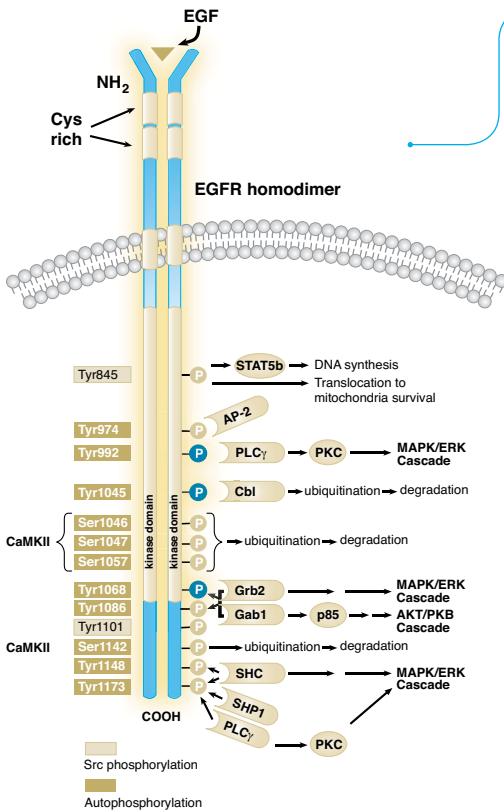
- Phospho-Rb (Ser780) Antibody #9307
- Phospho-Rb (Ser795) Antibody #9301
- Phospho-Rb (Ser807/811) Antibody #9308
- Rb (4H1) Mouse mAb #9309

Cell Signaling Technology offers the highest quality research products, rigorous validation, and technical support provided by the same scientists who produce and validate the products and know them best.

Note: Secondary antibodies are included in all kits (not listed).

Please check our website for a complete listing of kits and up-to-date kit components

Tyrosine Kinase / Adaptors



Phospho-EGF Receptor Antibody Sampler Kit #9922

- Phospho-EGF Receptor (Tyr992) Antibody #2235
- Phospho-EGF Receptor (Tyr1045) Antibody #2237
- Phospho-EGF Receptor (Tyr1068) (D7A5) XP™ Rabbit mAb #3777
- EGF Receptor (D38B1) XP™ Rabbit mAb #4267

NEW FAK Antibody Sampler Kit #9330

- Phospho-FAK (Tyr397) Antibody #3283
- Phospho-FAK (Tyr576/577) Antibody #3281
- Phospho-FAK (Tyr925) Antibody #3284
- FAK Antibody #3285

NEW Gab Antibody Sampler Kit #9791

- Phospho-Gab1 (Tyr307) Antibody #3234
- Phospho-Gab1 (Tyr627) (C32H2) Rabbit mAb #3233
- Gab1 Antibody #3232
- Phospho-Gab2 (Ser159) Antibody #3884
- Phospho-Gab2 (Tyr452) (C33G1) Rabbit mAb #3882
- Gab2 (26B6) Rabbit mAb #3239

Phospho-HER2/ErbB2 Antibody Sampler Kit #9923

- Phospho-HER2/ErbB2 (Tyr877) Antibody #2241
- Phospho-HER2/ErbB2 (Tyr1221/1222) (6B12) Rabbit mAb #2243
- HER2/ErbB2 (29D8) Rabbit mAb #2165

c-Kit Antibody Sampler Kit #9370

- Phospho-c-Kit (Tyr703) (D12E12) Rabbit mAb #3073
- Phospho-c-Kit (Tyr719) Antibody #3391
- c-Kit (D13A2) XP™ Rabbit mAb #3074

Met Signaling Antibody Sampler Kit #3019

- Phospho-Gab1 (Tyr307) Antibody #3234
- Gab1 Antibody #3232
- Phospho-Met (Tyr1003) (13D11) Rabbit mAb #3135
- Phospho-Met (Tyr1234/1235) (D26) XP™ Rabbit mAb #3077
- Phospho-Met (Tyr1349) (130H2) Rabbit mAb #3133
- Met (25H2) Mouse mAb #3127

PDGF Receptor α Antibody Sampler Kit #9360

- Phospho-PDGF Receptor α (Tyr754) (23B2) Rabbit mAb #2992
- Phospho-PDGF Receptor α (Tyr849)/PDGF Receptor β (Tyr857) (C43E9) Rabbit mAb #3170
- Phospho-PDGF Receptor α (Tyr1018) Antibody #4547
- PDGF Receptor α (D1E1E) XP™ Rabbit mAb #3174

PDGF Receptor β Antibody Sampler Kit #9970

- Phospho-PDGF Receptor β (Tyr740) (32A9) Rabbit mAb #3168
- Phospho-PDGF Receptor β (Tyr751) (C63G6) Rabbit mAb #4549
- Phospho-PDGF Receptor β (Tyr771) (76D6) Rabbit mAb #3173
- Phospho-PDGF Receptor β (Tyr1009) (42F9) Rabbit mAb #3124
- Phospho-PDGF Receptor β (Tyr1021) (6F10) Rabbit mAb #2227
- PDGF Receptor β (28E1) Rabbit mAb #3169

Src Antibody Sampler Kit #9935

- Phospho-Src Family (Tyr416) Antibody #2101
- Non-phospho-Src (Tyr416) (7G9) Mouse mAb #2102
- Phospho-Src (Tyr527) Antibody #2105
- Non-phospho-Src (Tyr527) Antibody #2107
- Src (36D10) Rabbit mAb #2109

NEW Src Family Antibody Sampler Kit #9320

- Csk (C74C1) Rabbit mAb #4980
- Fyn Antibody #4023
- Lck (D88) XP™ Rabbit mAb #2984
- Lyn (C13F9) Rabbit mAb #2796
- Src (32G6) Rabbit mAb #2123
- Yes Antibody #2734

NEW 14-3-3 Family Antibody Sampler Kit #9769

- 14-3-3 β/α Antibody #9636
- 14-3-3 γ Antibody #9637
- 14-3-3 ε Antibody #9635
- 14-3-3 ζ/δ Antibody #9639
- 14-3-3 η Antibody #9640
- 14-3-3 τ Antibody #9638

NEW c-Cbl Antibody Sampler Kit #9794

- c-Cbl (C49H8) Rabbit mAb #2179
- Phospho-c-Cbl (Tyr731) Antibody #3554
- Phospho-c-Cbl (Tyr774) Antibody #3555

NEW Phospho-EGF Receptor Pathway Antibody Sampler Kit #9789

- Phospho-Akt (Ser473) (D9E) XP™ Rabbit mAb # 4060
- Phospho-c-Cbl (Tyr774) Antibody # 3555
- Phospho-EGF Receptor (Tyr1068) (D7A5) XP™ Rabbit mAb # 3777
- Phospho-Gab1 (Tyr627) (C32H2) Rabbit mAb # 3233
- Phospho-p44/42 MAPK (Erk1/2) (Thr202/Tyr204) (D13.14.4E) XP™ Rabbit mAb # 4370
- Phospho-PLCγ1 (Tyr783) Antibody # 2821
- Phospho-Shc (Tyr239/240) Antibody # 2434
- Phospho-Stat5 (Tyr694) (D47E7) XP™ Rabbit mAb # 4322

Post-translational Modification Specific Motifs

Phospho-(Ser) Kinase Substrate Antibody Sampler Kit #9615

- Phospho-(Ser) 14-3-3 Binding Motif (4E2) Mouse mAb #9606
- Phospho-(Ser) Arg-X-Tyr/Phe-X-pSer Motif Antibody #2981
- Phospho-(Ser) CDKs Substrate Antibody #2324
- Phospho-MAPK/CDK Substrates (PXSP or SPXR/K) (34B2) Rabbit mAb #2325

Phospho-(Ser/Thr) Kinase Substrate Antibody Sampler Kit #9920

- Phospho-Akt Substrate (RXRXXS/T) (110B7E) Rabbit mAb #9614
- Phospho-(Ser/Thr) ATM/ATR Substrate Antibody #2851
- Phospho-(Ser) CDKs Substrate Antibody #2324
- Phospho-(Ser) PKC Substrate Antibody #2261
- Phospho-PKA Substrate (RRXS/T) (100G7E) Rabbit mAb #9624
- Phospho-(Thr) MAPK/CDK Substrate Mouse mAb #2321

PI3K / Akt Signaling

Phospho-Akt Pathway Antibody Sampler Kit #9916

- Phospho-Akt (Thr308) (C31E5E) Rabbit mAb #2965
- Phospho-Akt (Ser473) (D9E) XP™ Rabbit mAb #4060
- Akt (pan) (C67E7) Rabbit mAb #4691
- Phospho-GSK-3β (Ser9) (5B3) Rabbit mAb #9323
- Phospho-PDK1 (Ser241) (C49H2) Rabbit mAb #3438
- Phospho-PTEN (Ser380) Antibody #9551
- Phospho-c-Raf (Ser259) Antibody #9421
- LY294002 (PI3 Kinase Inhibitor) #9901

Akt Isoform Antibody Sampler Kit #9940

- Akt1 (C73H10) Rabbit mAb #2938
- Akt2 (D6G4) Rabbit mAb #3063
- Akt3 (62A8) Rabbit mAb #3788
- Akt (pan) (C67E7) Rabbit mAb #4691
- C2C12 cell extracts - Untreated

Forkhead Signaling Antibody Sampler Kit #9946

- Phospho-FoxO1 (Thr24)/FoxO3a (Thr32) Antibody #9464
- Phospho-FoxO1 (Ser256) Antibody #9461
- Phospho-FoxO1 (Ser319)/FoxO4 (Ser262) Antibody #2487
- FoxO1 (C29H4) Rabbit mAb #2880
- Phospho-FoxO3a (Ser253) Antibody #9466
- Phospho-FoxO3a (Ser318/321) Antibody #9465
- FoxO3a (75D8) Rabbit mAb #2497
- FoxO4 Antibody #9472

GSK-3 Antibody Sampler Kit #9369

- Phospho-GSK-3α (Ser21) (36E9) Rabbit mAb #9316
- Phospho-GSK-3α/β (Ser21/9) (37F11) Rabbit mAb (GSK-3α Preferred) #9327
- GSK-3α Antibody #9338
- Phospho-GSK-3β (Ser9) (5B3) Rabbit mAb #9323
- GSK-3β (27C10) Rabbit mAb #9315

PI3 Kinase Antibody Sampler Kit #9655

- Phospho-PI3K p85 (Tyr458)/p55 (Tyr199) Antibody #4228
- PI3 Kinase p85 (19H8) Rabbit mAb #4257
- PI3 Kinase p110α (C73F8) Rabbit mAb #4249
- PI3 Kinase p110β (C33D4) Rabbit mAb #3011
- PI3 Kinase p110γ Antibody #4252
- PI3 Kinase Class III (D4E2) Rabbit mAb #3358

PTEN and PDK1 Antibody Sampler Kit #9652

- Phospho-PDK1 (Ser241) (C49H2) Rabbit mAb #3438
- PDK1 Antibody #3062
- Phospho-PTEN (Ser380/Thr382/383) (44A7) Rabbit mAb #9549
- Non-Phospho PTEN (Ser380/Thr382/Thr383) Antibody #9569
- PTEN (D4.3) XP™ Rabbit mAb #9188

Ca²⁺ / cAMP / Lipid Signaling

Phospho-PKC Antibody Sampler Kit #9921

- Phospho-PKCa/β II (Thr638/641) Antibody #9375
- Phospho-PKCδ (Thr505) Antibody #9374
- Phospho-PKCδ/θ (Ser643/676) Antibody #9376
- Phospho-PKCθ (Thr538) Antibody #9377
- Phospho-PKCα/λ (Thr410/403) Antibody #9378
- Phospho-PKC (pan) (βII Ser660) Antibody #9371
- Phospho-PKD/PKCμ (Ser744/748) Antibody #2054
- Phospho-PKD/PKCμ (Ser916) Antibody #2051
- PKD/PKCμ Antibody #2052

PKC Isoform Antibody Sampler Kit #9960

- PKCa Antibody #2056
- PKCδ Antibody #2058
- PKCζ (C24E6) Rabbit mAb #9368
- PKD/PKCμ Antibody #2052

PLCγ Antibody Sampler Kit #3860

- Phospho-PLCy1 (Tyr783) Antibody #2821
- PLCy1 Antibody #2822
- Phospho-PLCy2 (Tyr759) Antibody #3874
- Phospho-PLCy2 (Tyr1217) Antibody #3871
- PLCy2 Antibody #3872

DNA Damage

DNA Damage Antibody Sampler Kit #9947

- Phospho-ATM (Ser1981) (10H11.E12) Mouse mAb #4526
- Phospho-ATR (Ser428) Antibody #2853
- Phospho-BRCA1 (Ser1524) Antibody #9009
- Phospho-Chk1 (Ser296) Antibody #2349
- Phospho-Chk2 (Thr68) Antibody #2661
- Phospho-Histone H2A.X (Ser139) (20E3) Rabbit mAb #9718
- Phospho-p53 (Ser15) (16G8) Mouse mAb #9286

Phospho-Chk1/2 Antibody Sampler Kit #9931

- Phospho-Chk1 (Ser296) Antibody #2349
- Phospho-Chk1 (Ser317) Antibody #2344
- Phospho-Chk1 (Ser345) (133D3) Rabbit mAb #2348
- Chk1 Antibody #2345
- Phospho-Chk2 (Ser19) Antibody #2666
- Phospho-Chk2 (Ser33/35) Antibody #2665
- Phospho-Chk2 (Thr68) Antibody #2661
- Phospho-Chk2 (Ser516) Antibody #2669
- Chk2 Antibody #2662

COMING SOON Mismatch Repair Antibody Sampler Kit #9786

- MLH1 (49C7) Mouse mAb #3515
- MSH2 (D24B5) XP™ Rabbit mAb #2017
- MSH6 (L990) Antibody #3996

Phospho-p53 Antibody Sampler Kit #9919

- Phospho-p53 (Ser6) Antibody #9285
- Phospho-p53 (Ser9) Antibody #9288
- Phospho-p53 (Ser15) Antibody #9284
- Phospho-p53 (Ser15) (16G8) Mouse mAb #9286
- Phospho-p53 (Ser20) Antibody #9287
- Phospho-p53 (Ser37) Antibody #9289
- Phospho-p53 (Ser46) Antibody #2521
- Phospho-p53 (Ser392) Antibody #9281
- p53 (7F5) Rabbit mAb #2527

Note: Secondary antibodies are included in all kits (not listed).

Please check our website for a complete listing of kits and up-to-date kit components

Adhesion

Cadherin-Catenin Antibody Sampler Kit #9961

- E-Cadherin Antibody #4065
- N-Cadherin Antibody #4061
- P-Cadherin Antibody #2130
- Pan-Cadherin Antibody #4068
- α -E-Catenin Antibody #3236
- β -Catenin Antibody (Carboxy-terminal Antigen) #9587

Integrin Antibody Sampler Kit #4749

- Integrin α 4 Antibody #4600
- Integrin α 5 Antibody #4705
- Integrin α V Antibody #4711
- Integrin β 1 Antibody #4706
- Integrin β 3 Antibody #4702
- Integrin β 4 Antibody #4707
- Integrin β 5 Antibody #4708

Cytoskeletal Signaling

Actin Reorganization Antibody Sampler Kit #9967

- Phospho-Cofilin (Ser3) (77G2) Rabbit mAb #3313
- Cofilin (D59) Antibody #3318
- Phospho-Ezrin (Thr567)/Radixin (Thr564)/Moesin (Thr558) (41A3) Rabbit mAb #3149
- Ezrin/Radixin/Moesin Antibody #3142
- Phospho-VASP (Ser157) Antibody #3111
- Phospho-VASP (Ser239) Antibody #3114
- VASP (A290) Antibody #3120

Cytokeratin Antibody Sampler Kit #9384

- Keratin 7 Antibody #3473
- Keratin 8/18 (C51) Mouse mAb #4546
- Keratin 17 (D73C7) XPTM Rabbit mAb #4543
- Keratin 18 (DC10) Mouse mAb #4548
- Keratin 19 (BA17) Mouse mAb #4558
- Pan-Keratin (C11) Mouse mAb #4545

COMING SOON Epithelial-Mesenchymal Transition (EMT) Antibody Sampler Kit #9782

- E-Cadherin (24E10) Rabbit mAb #3195
- N-Cadherin Antibody #4061
- β -Catenin Antibody (Carboxy-terminal Antigen) #9587
- Claudin-1 Antibody #4933
- Slug (C19G7) Rabbit mAb #9585
- Snail (C15D3) Rabbit mAb #3879
- TCF8/ZEB1 (D80D3) Rabbit mAb #3396
- Vimentin (R28) Antibody #3932
- ZO-1 Antibody #5406

Intermediate Filaments Antibody Sampler Kit #4751

- Desmin Antibody #4024
- GFAP (GA5) Mouse mAb #3670
- Pan-Keratin (C11) Mouse mAb #4545
- Plectin-1 Antibody #2863
- Vimentin (R28) Antibody #3932

MYPT1 Antibody Sampler Kit #5143

- Phospho-MYPT1 (Ser507) Antibody #3040
- Phospho-MYPT1 (Ser668) Antibody #3048
- Phospho-MYPT1 (Thr696) Antibody #5163
- Phospho-MYPT1 (Thr853) Antibody #4563
- MYPT1 Antibody #2634

NEW Myosin Light Chain 2 Antibody Sampler Kit #9776

- Phospho-Myosin Light Chain 2 (Ser19) Antibody #3671
- Phospho-Myosin Light Chain 2 (Thr18/Ser19) Antibody #3674
- Myosin Light Chain 2 Antibody #3672

Myosin II Isoform Antibody Sampler Kit #5144

- Myosin IIa Antibody #3403
- Myosin IIb Antibody #3404
- Myosin IIc Antibody #3405

PAK 1/2/3 Antibody Sampler Kit #4750

- Phospho-PAK1 (Ser144)/PAK2 (Ser141) Antibody #2606
- Phospho-PAK1 (Ser199/204)/PAK2 (Ser192/197) Antibody #2605
- Phospho-PAK1 (Thr423)/PAK2 (Thr402) Antibody #2601
- PAK1 Antibody #2602
- Phospho-PAK2 (Ser20) Antibody #2607
- PAK2 (C17A10) Rabbit mAb #2615
- PAK3 Antibody #2609
- PAK1/2/3 Antibody #2604

Rab Family Antibody Sampler Kit #9385

- Rab4 Antibody #2167
- Rab5 Antibody #2143
- Rab7 Antibody #2094
- Rab9 Antibody #2095
- Rab11 Antibody #3539

Rho-GTPase Antibody Sampler Kit #9968

- Cdc42 (11A11) Rabbit mAb #2466
- Phospho-Rac1/cdc42 (Ser71) Antibody #2461
- Rac1/2/3 Antibody #2465
- RhoA (67B9) Rabbit mAb #2117
- RhoB Antibody #2098
- RhoC (D40E4) Rabbit mAb #3430

Vav Isoform Antibody Sampler Kit #5145

- Vav1 (R775) Antibody #2153
- Vav2 (C64H2) Rabbit mAb #2848
- Vav3 Antibody #2398

NEW Vesicle Trafficking Antibody Sampler Kit #9765

- APPL1 (D83H4) XPTM Rabbit mAb #3858
- Phospho-Caveolin-1 (Tyr14) Antibody #3251
- Caveolin-1 (D46G3) XPTM Rabbit mAb #3267
- Clathrin Heavy Chain (D3C6) XPTM Rabbit mAb #4796
- EEA1 (C45B10) Rabbit mAb #3288
- GOPC Antibody #4646
- Rab5 (C8B1) Rabbit mAb #3547
- Syntaxin 6 (C34B2) Rabbit mAb #2869

NEW Vimentin Antibody Sampler Kit #9775

- Phospho-Vimentin (Ser56) Antibody #3877
- Phospho-Vimentin (Ser82) Antibody #3878
- Vimentin (R28) Antibody #3932

Nuclear Receptor Signaling

Phospho-Estrogen Receptor α Antibody Sampler Kit #9924

- Phospho-Estrogen Receptor α (Ser104/106) Antibody #2517
- Phospho-Estrogen Receptor α (Ser118) (16J4) Mouse mAb #2511
- Phospho-Estrogen Receptor α (Ser167) (D1A3) Rabbit mAb #5587
- Estrogen Receptor α (62A3) Mouse mAb #2512

Protein Folding/ Stability

Protein Folding and Stability Antibody Sampler Kit #4889

- ISG15 Antibody #2743
- NEDD8 Antibody #2745
- Skp1 Antibody #2156
- Skp2 Antibody #4358
- SUMO-1 Antibody #4930
- SUMO-2/3 (18H8) Rabbit mAb #4971
- UBC3 Antibody #4997
- Ubiquitin (P4D1) Mouse mAb #3936

HSP/Chaperone Antibody Sampler Kit #9965

- BiP (C50B12) Rabbit mAb #3177
- Calnexin (C5C9) Rabbit mAb #2679
- HSF1 Antibody #4356
- HSP40 (C64B4) Rabbit mAb #4871
- HSP60 (D307) Antibody #4870
- HSP70 Antibody #4872
- HSP90 (C45G5) Rabbit mAb #4877
- PDI (C81H6) Rabbit mAb #3501

Neuroscience

COMING SOON Alzheimer Disease Antibody Sampler Kit #9784

- β -Amyloid Antibody #2454
- APP/ β -Amyloid (NAB228) Mouse mAb #2450
- BACE (D10E5) Rabbit mAb #5606
- Phospho-GSK-3 α (Ser21) (36E9) Rabbit mAb #9316
- GSK-3 α / β (D75D3) XPTM Rabbit mAb #5676
- Neurofilament-L (C28E10) Rabbit mAb #2837
- α -Synuclein (Syn204) Mouse mAb #2647
- Tau (Tau46) Mouse mAb #4019

NEW Neurofilament Antibody Sampler Kit #9781

- Neurofilament-H (RMdO 20) Mouse mAb #2836
- Neurofilament-L (C28E10) Rabbit mAb #2837
- Neurofilament-L (DA2) Mouse mAb #2835
- Neurofilament-M (RMO 14.9) Mouse mAb #2838

NEW TrkA and TrkB Antibody Sampler Kit #4638

- Phospho-TrkA (Tyr490)/TrkB (Tyr516) (C35G9) Rabbit mAb # 4619
- Phospho-TrkA (Tyr674/675)/TrkB (Tyr706/707) (C50F3) Rabbit mAb # 4621
- TrkA (14G6) Rabbit mAb # 2508
- TrkB (80E3) Rabbit mAb # 4603
- Trk (pan) (C17F1) Rabbit mAb # 4609

Phosphatases

NEW PP2A Antibody Sampler Kit #9780

- PP2A A Subunit (81G5) Rabbit mAb # 2041
- PP2A B Subunit (100C1) Rabbit mAb # 2290
- PP2A C Subunit (52F8) Rabbit mAb # 2259

NEW SHP-2 Antibody Sampler Kit #9793

- Phospho-SHP-2 (Tyr542) Antibody #3751
- Phospho-SHP-2 (Tyr580) Antibody #3703
- SHP-2 (D50F2) Rabbit mAb #3397

Complementary Reagents

Epitope Tag Antibody Sampler Kit #9962

- DYKDDDDK Tag Antibody (Binds to same epitope as Sigma's Anti-FLAG[®] M2 Antibody) #2368
- GST (91G1) Rabbit mAb #2625
- HA-Tag (6E2) Mouse mAb #2367
- His-Tag (27E8) Mouse mAb #2366
- Myc-Tag (71D10) Rabbit mAb #2278

NEW Loading Control Antibody Sampler Kit (HRP Conjugate) #4670

- β -Actin (13E5) Rabbit mAb (HRP Conjugate) #5125
- COX IV (3E11) Rabbit mAb (HRP Conjugate) #5247
- GAPDH (14C10) Rabbit mAb (HRP Conjugate) #3683
- Histone H3 (3H1) Rabbit mAb (HRP Conjugate) #5192
- β -Tubulin (9F3) Rabbit mAb (HRP Conjugate) #5346

Loading Control Antibody Sampler Kit #5142

- β -Actin (13E5) Rabbit mAb #4970
- COX IV (3E11) Rabbit mAb #4850
- GAPDH (14C10) Rabbit mAb #2118
- Histone H3 (D1H2) XPTM Rabbit mAb #4499
- β -Tubulin (9F3) Rabbit mAb #2128

NEW Loading Control Antibody Sampler Kit (Mouse) #9774

- β -Actin (8H10D10) Mouse mAb #3700
- Histone H3 (96C10) Mouse mAb #3638
- α -Tubulin (DM1A) Mouse mAb #3873

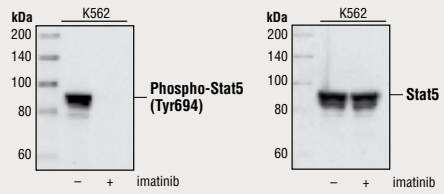
PhosphoPlus® Antibody Duets

PhosphoPlus® Antibody Duets from Cell Signaling Technology (CST) provide a means to assess protein activation status. Each PhosphoPlus Duet contains an activation-state and a total protein antibody to your target of interest. These antibodies have been selected from our product offering based upon superior performance in the specified applications.

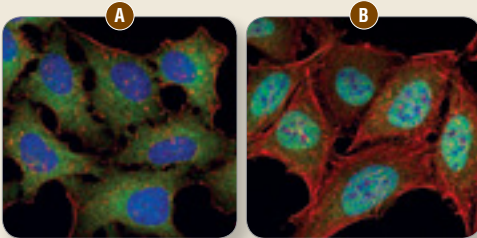
PhosphoPlus® Akt (Thr308) #8205
PhosphoPlus® Akt (Ser473) #8200
PhosphoPlus® AMPKa (Thr172) #8208
PhosphoPlus® ATF-2 (Thr71) #8220
PhosphoPlus® Bad (Ser112) #8223
PhosphoPlus® Caspase-3 (Cleaved, Asp175) #8202
PhosphoPlus® CREB (Ser133) #8212
PhosphoPlus® GSK-3β (Ser9) #8213
PhosphoPlus® IκBα (Ser32/36) #8219
PhosphoPlus® Jak2 (Tyr1007/Tyr1008) #8224
PhosphoPlus® c-Jun (Ser63) #8221
PhosphoPlus® c-Jun (Ser73) #8222
PhosphoPlus® LKB1 (Ser428) #5132
PhosphoPlus® MEK1/2 (Ser217/221) #8211
PhosphoPlus® Met (Tyr1234/Tyr1235) #8218
PhosphoPlus® NF-κB p65/RelA (Ser536) #8214
PhosphoPlus® Notch1 (Cleaved, Val1744) Antibody Duet #8216
PhosphoPlus® p38 MAPK (Thr180/Tyr182) #8203
PhosphoPlus® p44/42 MAPK (Erk1/2) (Thr202/Tyr204) #8201
PhosphoPlus® p70 S6 Kinase (Thr389) #8209
PhosphoPlus® S6 Ribosomal Protein (Ser235/Ser236) #8207
PhosphoPlus® SAPK/JNK1 (Thr183/Tyr185) #8206
PhosphoPlus® Stat1 (Tyr701) #8217
PhosphoPlus® Stat3 (Tyr705) #8204
PhosphoPlus® Stat5 (Tyr694) #8215

PhosphoPlus® Antibody Duets

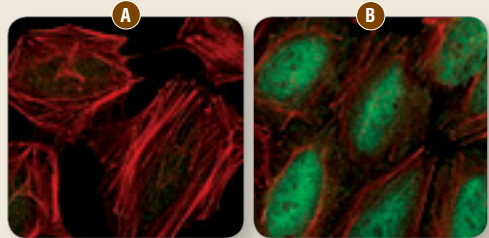
It takes two to tango



PhosphoPlus® NF-κB p65/RelA (Ser536) Antibody Duet #8214



NF-κB p65 (C22B4) Rabbit mAb #4764: Confocal IF analysis of HeLa cells, untreated (A) or TNF-α-treated (20 ng/ml for 20 min, B), using #4764 (green). Actin filaments have been labeled with Alexa Fluor® 555 phalloidin (red). Blue pseudocolor = DRAQ5® #4084 (fluorescent DNA dye).



Phospho-NF-κB p65 (Ser536) (93H1) Rabbit mAb #3033: Confocal IF analysis of HeLa cells, untreated (A) and TNF-α-treated (20 ng/ml for 20 min, B), using #3033 (green). Actin filaments have been labeled with Alexa Fluor® phalloidin 555 (red).



Cell Signaling
TECHNOLOGY®

USA Headquarters

Cell Signaling Technology

Technical Support: (toll-free) 1-877-678-8324

Tel: 978-867-2300 / Fax: 978-867-2400

E-mail: info@cellsignal.com / www.cellsignal.com

International Subsidiaries

Cell Signaling Technology (China) Limited

Technical Support: (toll-free) 4006-473287

Tel: (86) 21-5835-6288 / Fax: (86) 21-5835-6116

E-mail: info@cst-c.com.cn / www.cst-c.com.cn

Cell Signaling Technology Japan, K.K.

Tel: 03 (5652) 0213 / Fax: 03 (3249) 1170


E-mail: info@cstj.co.jp / www.cstj.co.jp

Cell Signaling Technology Europe

Tel: +31 (0)71 568 1060 / Fax: +31 (0)71 568 1065

E-mail: info@cellsignal.eu / www.cellsignal.eu

ANTIBODIES AND RELATED REAGENTS FOR SIGNAL TRANSDUCTION RESEARCH

 Printed in the USA on recycled paper using soy inks and processed chlorine free.

© 11/2010 Cell Signaling Technology, Inc.

Cell Signaling Technology®, exceptional performance™, XM1™, PhosphoPlus®, and XP™ are trademarks of Cell Signaling Technology, Inc. Cell Signaling Technology Motif Antibodies are covered by U.S. Patents: 6,441,140, 6,982,318, 7,259,022, 7,344,714 U.S. Patent Publication No. 2007/0026461 (and foreign equivalents) owned by Cell Signaling Technology. Selected rabbit monoclonal antibodies are produced under license (granting certain rights including those under U.S. Patents No. 5,675,063 and/or in some instances 7,429,487) from Epitomics, Inc. Anti-FLAG® is a trademark of Sigma-Aldrich. Alexa Fluor® is a registered trademark of Molecular Probes, Inc. DRAQ5® is a registered trademark of Biostatus Limited.

All content of this Brochure and Technical Reference is protected by U.S. and foreign intellectual property laws. You may not copy, modify, upload, download, post, transmit, republish or distribute any of the content without our prior written permission except for your own personal and non-commercial purposes. Except as provided in the preceding sentence, nothing contained in this Brochure and Technical Reference shall be construed as granting a license or other rights under any patent, trademark, copyright or other intellectual property of Cell Signaling Technology or any third party. Unauthorized use of any Cell Signaling Technology trademark, service mark or logo may be a violation of federal and state trademark laws.