



PTMScan[®] Direct Proteomics Services

UNPARALLELED PRODUCT QUALITY, VALIDATION, AND TECHNICAL SUPPORT



Cell Signaling

TECHNOLOGY[®]

PTMScan[®] Proteomics Services

PTMScan[®] Proteomics Services from Cell Signaling Technology (CST) employ proprietary methodologies for antibody-based peptide enrichment combined with tandem mass spectrometry for quantitative profiling of post-translational modifications (PTMs), including phosphorylation, ubiquitination, and acetylation.



PTMScan[®] Direct

A multiplex proteomics assay for quantitative measurement of a defined set of known PTMs on critical signaling nodes within a group of cellular signaling pathways. The method employs an immunoaffinity purification technique using CST's proprietary modification state-specific antibodies coupled with mass spectrometry, allowing for targeted screening of hundreds of defined signaling proteins from cell line and tissue samples. This targeted-mode proteomics technology is used to investigate changes in PTMs to specific or known protein targets in response to a drug treatment or disease state.



PTMScan[®] Discovery

A proteomics method for the identification and quantitation of known and novel post-translational modifications (PTMs), including Ser, Thr, and Tyr phosphorylation, as well as ubiquitination and acetylation. The method employs immunoaffinity purification using CST's proprietary motif antibodies coupled with tandem mass spectroscopy for comprehensive profiling of up to thousands of PTMs from cell line and tissue samples. This discovery-mode proteomics technology is useful for the study of PTMs throughout the proteome in a variety of biological model systems and disease states.

PTMScan[®] Inquiries

Pharma Services Department: ptmscan@cellsignal.com

Applications

Target Validation

PTMScan® Proteomics Services have been used most extensively to discover novel mechanisms of disease based on changes in PTM profiles associated with aberrantly activated kinases in disease models. PTMScan® Technology is equally effective in the identification of drug targets and potential off-target effects, mechanism-of-action studies, and the elucidation of cellular regulatory networks.

Pathway Profiling

PTMScan® Proteomics Services allow monitoring of the activation of up to thousands of cellular signaling proteins across a broad range of pathways.

Biomarker Discovery

PTMScan® Proteomics Services provide a strategy for profiling lead compounds and performing proof-of-mechanism and proof-of-concept studies. This enables the discovery and validation of biomarkers that predict compound activity, disease susceptibility, and drug response.

Patient Stratification

PTMScan® Proteomics Services enable correlation of target enzyme activation and drug sensitivity, which can provide the basis for patient stratification assay development.

Deliverables

Summary Report

The report contains qualitative and quantitative results, analysis, interpretation, and recommendations.

The following is provided in table format with detailed explanation of contents and guidelines for data review:

- Peptide sequences
- Quantitative changes at sites of PTMs using label-free or SILAC methods
- Parent proteins and functions
- Classification information
- DTA/mzXML ion spectra for client internal analysis

Consultation

Consultation with CST scientists for discussion and review of the results.



PTMScan[®] Direct Proteomics Services

PTMScan[®] Direct, a proprietary technology developed by Cell Signaling Technology (CST) scientists, provides targeted screening and quantification of a defined set of protein sites and signaling nodes critical for drug discovery, biomarker discovery, or diagnostic development. PTMScan[®] Direct employs an immunoaffinity purification method using proprietary modification site-specific antibodies coupled with LC-MS/MS. The method enables a multiplex proteomics assay for quantitative measurement of a defined set of critical signaling nodes within a group of cellular signaling pathways, and can be followed up with traditional antibody screening methods. The highest quality antibody products employed in PTMScan[®] Direct Proteomics Services are readily available from CST for many of the endpoint markers (see pg 11).

Features and Benefits

- ▣ Identification and quantification of up to hundreds of signaling nodes from multiple signaling pathways, enabling the most comprehensive pathway analysis profiling available.
- ▣ Direct measurement of specific peptide targets using LC-MS/MS alleviates background levels that are intrinsic to other protein-based assays, and allows for greater assay sensitivity and enhanced dynamic range.
- ▣ The start-to-finish service, performed by CST scientists with over 30 years of combined LC-MS expertise, provides you with timely and high-quality results.
- ▣ Deliverables include comprehensive result tables and a Summary Report containing a study overview and a results table guide, facilitating independent analysis and dissemination of your results.

PTMScan[®] Direct Service Options

Standard Service: Includes a qualitative and quantitative results table, an informatics results table, a summary presentation, and a copy of the raw LC-MS data files in mzXML format. The Standard PTMScan[®] Direct data package will be provided to the customer in electronic form using a secure ftp link.

Premium Service: Includes everything from the Standard PTMScan[®] Direct Service option plus a summary methods report, which includes a formal, written summary of the methods and data interpretation. Materials are provided in electronic form using a secure ftp link.

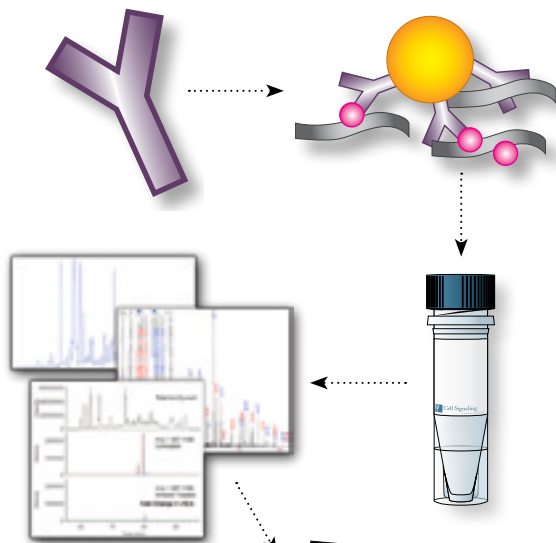


PTMScan[®] Inquiries: Pharma Services Department: ptmscan@cellsignal.com

Workflow and Deliverables

Step 1: Analysis

- Experimental objectives and design consultation with CST scientists.
- Determine cell line or tissue samples and experimental parameters for study.**
- Peptide immunoaffinity purification (IAP) with proprietary antibody reagent.
- Tandem mass spectrometry (LC-MS/MS) analysis of enriched phosphopeptides for qualitative sequence and phosphorylation site identification.
- Quantitative analysis of phosphopeptide fold-change between study samples for the endpoints defined in the service.



Step 2: Report and Consultation

- PTMScan® Direct report with qualitative and quantitative results.
- Report contains sequence assignments in table format and detailed explanation of table contents and guidelines for data review.
- Detailed discussion and review of report with CST scientists.
- Typical timeline: approximately 5 weeks; preliminary results delivery in 2 to 3 weeks; timeline will vary with project size.



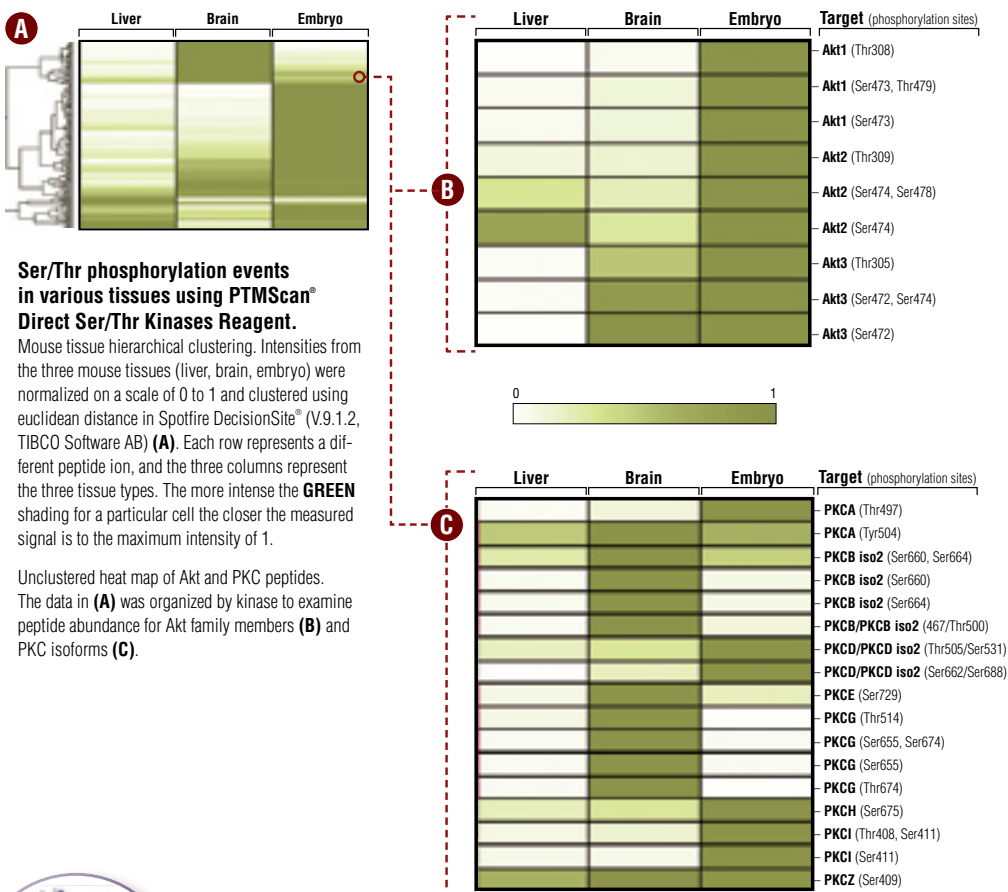
* Limited customization: During initial consultation, customized inclusion of a limited number of additional protein sites into the assay can be accommodated. Contact ptmscan@cellsignal.com for more details.

** β -actin/Histone H3, GAPDH, and α -Tubulin are included as total protein control markers.



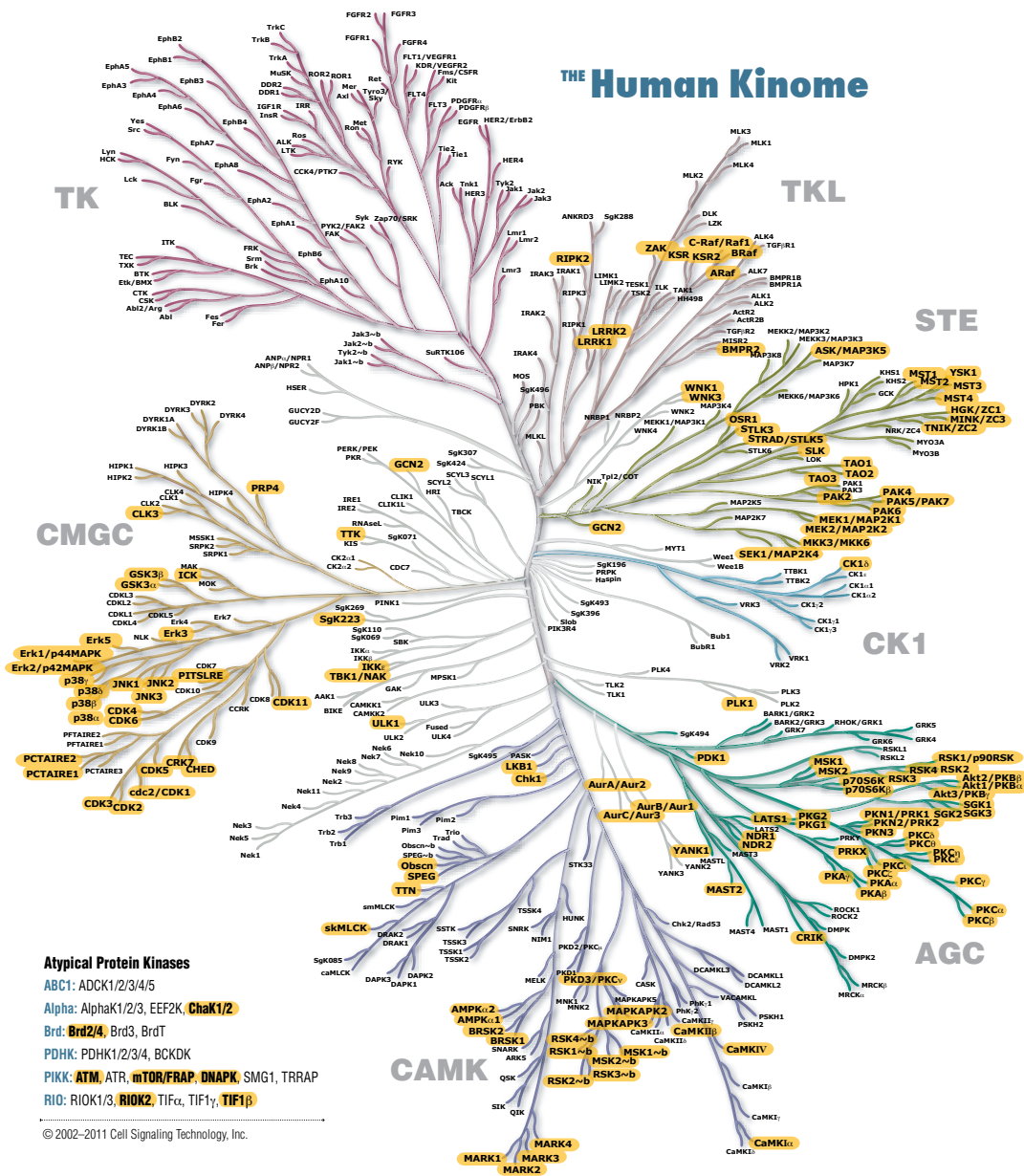
PTMScan® Direct–Ser/Thr Kinases

PTMScan® Direct Ser/Thr Kinases Service is a proteomics method for quantitative measurement of the activation state of a defined set of Ser or Thr kinases. The method employs immunoaffinity purification using CST's proprietary modification site-specific antibodies directed against known Ser, Thr, or Tyr sites on kinases throughout the Ser/Thr kinome, combined with tandem mass spectrometry for targeted screening of a defined set of Ser/Thr kinases. The PTMScan Direct Ser/Thr Kinases Service enables kinome-wide analysis of cellular phosphorylation for the validation of signaling targets, kinase substrates, and response biomarkers.



PTMScan® Inquiries: Pharma Services Department: ptmscan@cellsignal.com

THE Human Kinome



Atypical Protein Kinases

ABC1: ADCK1/2/3/4/5

Alpha: AlphaK1/2/3, EEF2K, ChaK1/2

Brd: Brd2/4, Brd3, BrdT

PDHK: PDHK1/2/3/4, BCKDK

PIKK: ATM, ATR, mTOR/FRAP, DNAPK, SMG1, TRRAP

RIO: RIOK1/3, RIOK2, TIFα, TIF1β

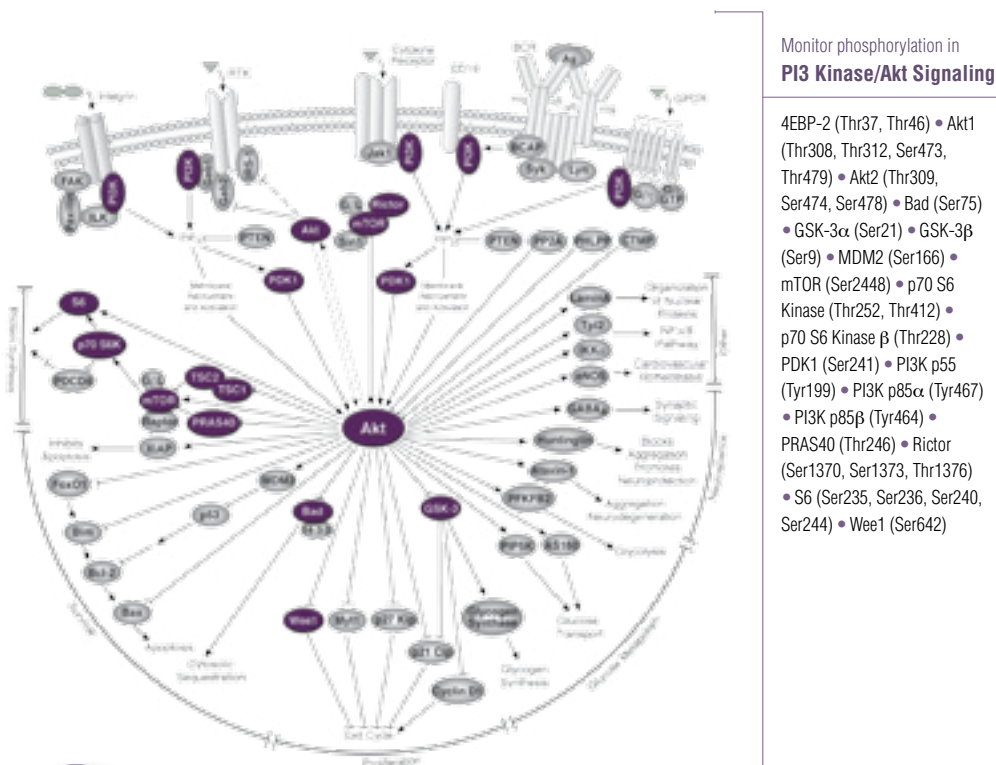
© 2002–2011 Cell Signaling Technology, Inc.

Highlighted proteins designate targeted protein modification sites within the human kinome that can be monitored using PTMScan® Direct Ser/Thr Kinases Service. Visit our website for a complete listing.

PTMScan® Direct–Multi-Pathway

PTMScan® Direct Multi-Pathway Service is a proteomics method for quantitative measurement of a defined set of phosphorylated proteins spanning a large number of signaling pathways, including Akt, MAPK, NF- κ B, and Jak/Stat signaling. The method employs an immunoaffinity purification method using CST's proprietary modification state-specific antibodies combined with tandem mass spectrometry for targeted screening of critical signaling nodes important for drug discovery, biomarker discovery, and diagnostic development.

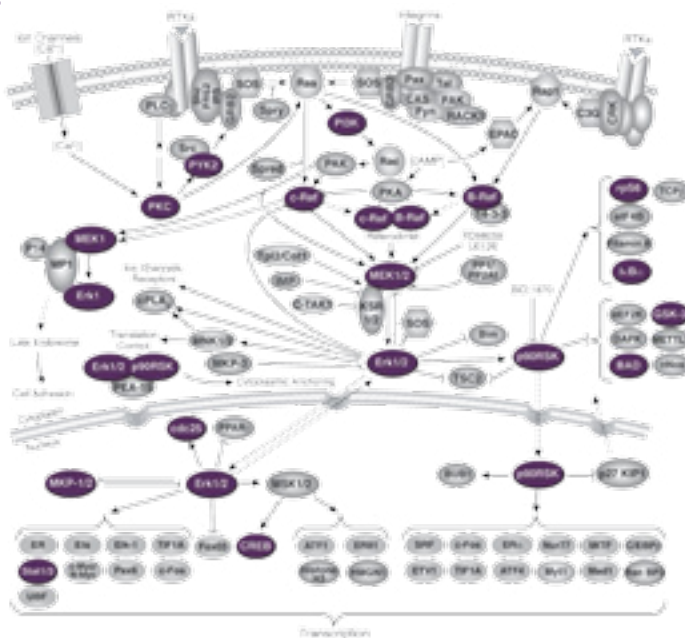
Highlighted purple nodes designate targeted protein modification sites within each sample signaling pathway that can be monitored with PTMScan® Direct Multi-Pathway Service.



PTMScan® Inquiries: Pharma Services Department: ptmscan@cellsignal.com

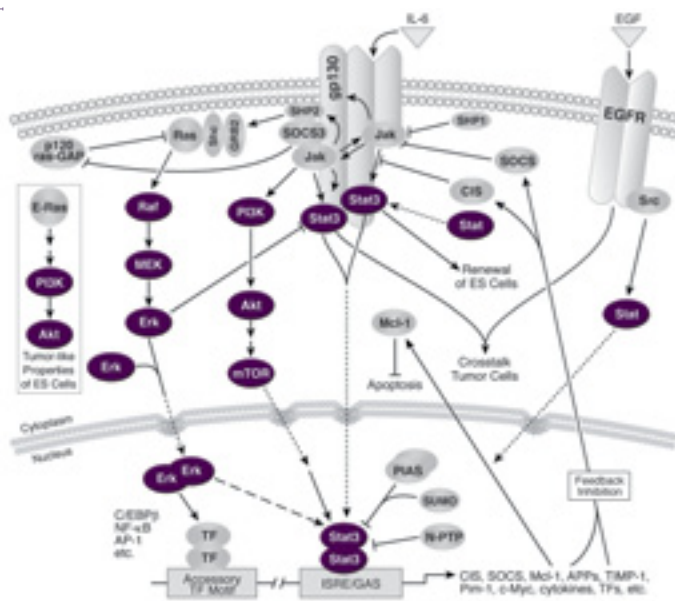
Monitor phosphorylation in MAP Kinase Signaling

ATF-2 (Thr62, Thr69, Thr71) • Bad (Ser75) • B-Raf (Ser446) • c-Raf (Ser338) • cdc25C (Ser168, Ser216) • c-Jun (Ser73) • GSK-3 α (Ser21) • GSK-3 β (S9) • I κ B α (Ser32, Ser36, Tyr42) • JNK3 (Thr221, Thr223) • JunD (Ser90, Ser100) • MEK1 (Ser217, Ser221) • MEK2 (Ser222, Ser226) • MKP-2 (Ser386) • p42 MAPK (Erk2) (Thr184, Tyr186) • p44 MAPK (Erk1) (Thr202, Tyr204) • p90RSK (Ser363, Thr359) • PI3K p85 α (Tyr467) • PI3K p85 β (Tyr464) • PKC α (Thr496) • Pyk2 (Tyr579, Tyr580) • RSK2 (Ser227) • RSK4 (Ser389) • S6 (Ser235, Ser236, Ser240, Ser244) • SAPK/JNK1 (Thr183, Tyr185) • Stat3 (Ser701, Tyr705, Ser727)



Monitor phosphorylation in Jak/Stat Signaling

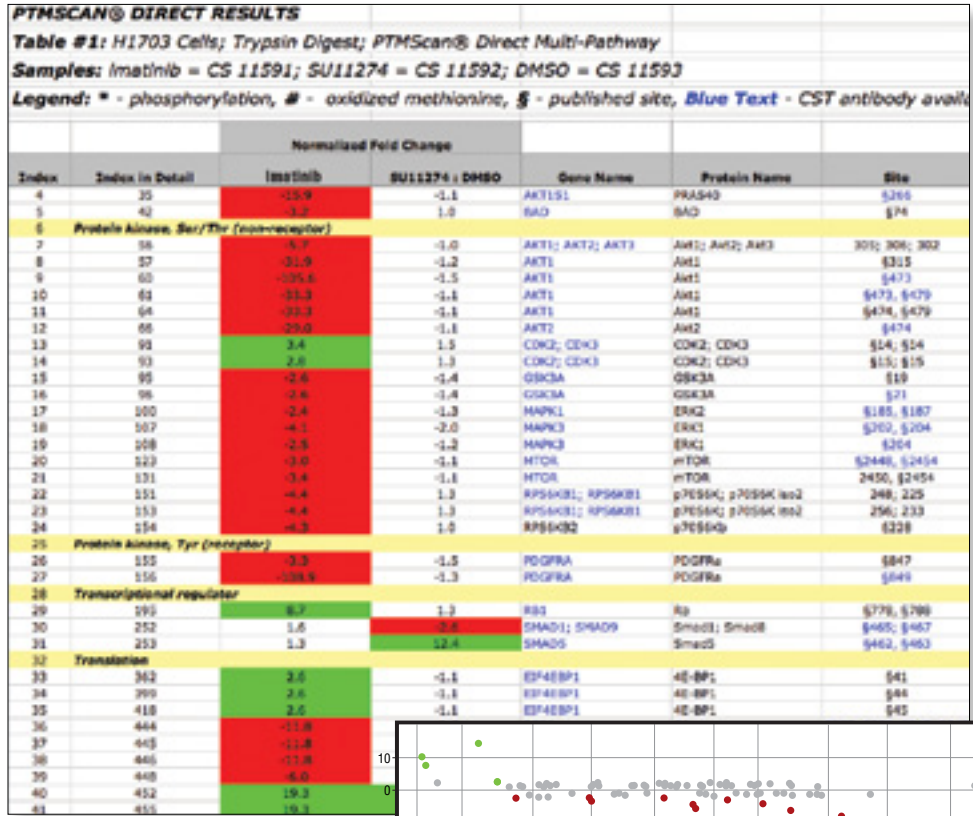
Akt1 (Thr308, Thr312, Ser473, Thr479) • Akt2 (Thr309, Ser474, Ser478) • B-Raf (Ser446) • c-Raf (Ser338) • MEK1 (Ser217, Ser221) • MEK2 (Ser222, Ser226) • mTOR (Ser2448) • p42 MAPK (Erk2) (Thr184, Tyr186) • p44 MAPK (Erk1) (Thr202, Tyr204) • PI3 Kinase p85 α (Tyr467) • PI3 Kinase p85 β (Tyr464) • Stat3 (Ser701, Tyr705, Ser727) • Stat5 (Tyr694) • Stat6 (Tyr641)



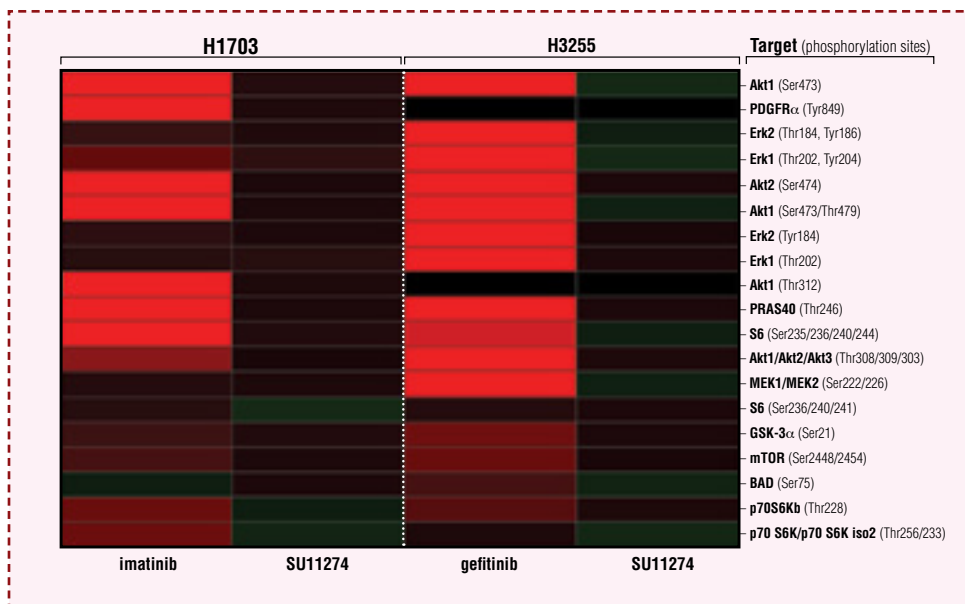
Additional Pathways Monitored with the Multi-Pathway Service: Apoptosis; Autophagy; Calcium, cAMP, and Lipid Signaling; Cell Cycle; Chromatin Regulation; Cytoskeletal Signaling/Adhesion; Metabolism; NF- κ B Signaling; TGF- β Signaling; Translational Control; Wnt/ β -Catenin Signaling.
Visit our website for a complete list of protein targets and modification sites.

PTMScan® Direct–Multi-Pathway

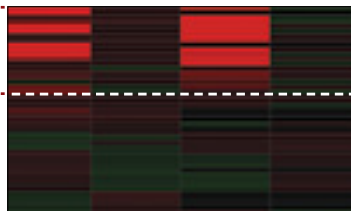
The PTMScan® Direct Multi-Pathway Service can be used to investigate changes in the phosphorylation state on a defined set of signaling proteins in response to drug treatment or disease states. The data shown were generated from two representative experiments using the PTMScan Direct Multi-Pathway Service.



Sample data from PTMScan® Direct Multi-Pathway study. Cells were lysed, and cellular proteins were digested with trypsin. The resulting peptides were subjected to immunoaffinity purification and LC tandem mass spectrometry using the PTMScan® Direct Multi-Pathway Reagent. Normalized fold changes of targeted phosphopeptides are shown, depicting positive (GREEN) and negative (RED) changes in modification state. Phosphopeptides exhibiting no change are shown in gray.



Drug Sensitivity Screening using PTMSan[®] Direct Multi-Pathway Reagent. Hierarchical clustering analysis comparing drug sensitivity of H1703 cells treated with imatinib (PDGFR inhibitor) and SU11274 (Met inhibitor), or H3255 cells treated with gefitinib (EGFR inhibitor) and SU11274. Elevated phosphorylation compared to DMSO control is indicated in **GREEN** and decreased phosphorylation is highlighted in **RED**.



Products for Follow-up Validation Studies

Several reagents from Cell Signaling Technology's product offering are readily available for follow-up target validation studies after completion of the PTMSan[®] Service Project. A selection of these products is highlighted and hyperlinked from the PTMSan Service Results Summary Reports for our clients' convenience.

- **Modification state-specific and total protein antibodies, including our exclusive line of XP[®] monoclonal antibodies,** are produced and validated in-house in a number of applications, including western blotting, immunohistochemistry, and immunofluorescence.
- **SignalSilence[®] siRNA duplexes** that allow knockdown of specific human or mouse proteins are available for many targets.
- **PathScan[®] Sandwich ELISA Kits and Antibody Pairs** are available to measure a large selection of intracellular signaling molecules. These products are developed, produced, and validated in-house, ensuring robust, sensitive, and specific assays.

Visit www.cellsignal.com for a complete product listing.

Publications by Cell Signaling Technology Scientists

2011

Gu, T.L. et al. (2011) Survey of tyrosine kinase signaling reveals ROS kinase fusions in human cholangiocarcinoma. *PLoS ONE* 6, e15640.

Gu, T.L. et al. (2011) Survey of activated FLT3 signaling in leukemia. *PLoS ONE* 6, e19169.

Kettenbach, A.N. et al. (2011) Absolute quantification of protein and post-translational modification abundance with stable isotope-labeled synthetic peptides. *Nat. Protoc.* 6, 175–186.

Dammer, E.B. et al. (2011) Polyubiquitin linkage profiles in three models of proteolytic stress suggest the etiology of Alzheimer disease. *J. Biol. Chem.* 286, 10457–10465.

Pighi, C. et al. (2011) Phospho-proteomic analysis of mantle cell lymphoma cells suggests a pro-survival role of B-cell receptor signaling. *Cell Oncol. (Dordr)* 34, 141–153.

Brave, S.R. et al. (2011) Assessing the Activity of Cediranib, a VEGFR-2/3 Tyrosine Kinase Inhibitor, against VEGFR-1 and Members of the Structurally Related PDGFR Family. *Mol. Cancer Ther.* 10, 861–873.

2010

Moritz, A. et al. (2010) Akt-RSK-S6 kinase signaling networks activated by oncogenic receptor tyrosine kinases. *Sci. Signal* 3, ra64.

Kang, S. (2010) p90 ribosomal S6 kinase 2 promotes invasion and metastasis of human head and neck squamous cell carcinoma cells. *J. Clin. Invest.* 120, 1165–1177.

Bonnette, P.C. et al. (2010) Phosphoproteomic characterization of PYK2 signaling pathways involved in osteogenesis. *J. Proteomics* 73, 1306–1320.

Aguiar, M. et al. (2010) Gas-Phase Rearrangements Do Not Affect Site Localization Reliability in Phosphoproteomics Data Sets. *J. Proteome Res.* 9, 3103–3107.

Carretero, J. et al. (2010) Integrative genomic and proteomic analyses identify targets for Lkb1-deficient metastatic lung tumors. *Cancer Cell* 17, 547–559.

Andersen, J.N. et al. (2010) Pathway-based identification of biomarkers for targeted therapeutics: personalized oncology with PI3K pathway inhibitors. *Sci. Transl. Med.* 2, 43ra55.

Knowlton, M.L. et al. (2010) Profiling Y561-dependent and -independent substrates of CSF-1R in epithelial cells. *PLoS ONE* 5, e13587.

2009

Schwer, B. et al. (2009) Calorie restriction alters mitochondrial protein acetylation. *Aging Cell* 8, 604–606.

Xu, P. et al. (2009) Quantitative proteomics reveals the function of unconventional ubiquitin chains in proteasomal degradation. *Cell* 137, 133–145.

2008

Pan, S. et al. (2008) Application of Targeted Quantitative Proteomics Analysis in Human Cerebrospinal Fluid Using a Liquid Chromatography Matrix-Assisted Laser Desorption/Ionization Time-of-Flight Tandem Mass Spectrometer (LC MALDI TOF/TOF) Platform. *J. Proteome Res.* 7, 720–730.

Guo, A. et al. (2008) Signaling networks assembled by oncogenic EGFR and c-Met. *Proc. Natl. Acad. Sci. USA* 105, 692–697.

2007

Rikova, K. et al. (2007) Global survey of phosphotyrosine signaling identifies oncogenic kinases in lung cancer. *Cell* 131, 1190–1203.

Stokes, M.P. et al. (2007) Profiling of UV-induced ATM/ATR signaling pathways. *Proc. Natl. Acad. Sci. USA* 104, 19855–19860.

Gerber, S.A. et al. (2007) The absolute quantification strategy: application to phosphorylation profiling of human separase serine 1126. *Methods Mol. Biol.* 359, 71–86.

Gu, T.L. et al. (2007) Phosphoproteomic analysis identifies the M0-91 cell line as a cellular model for the study of TEL-TRK fusion-associated leukemia. *Leukemia* 21, 563–566.

Gu, T.L. et al. (2007) A novel fusion of RBM6 to CSF1R in acute megakaryoblastic leukemia. *Blood* 110, 323–333.

2006

Mercher, T. et al. (2006) JAK2T875N is a novel activating mutation that results in myeloproliferative disease with features of megakaryoblastic leukemia in a murine bone marrow transplantation model. *Blood* 108, 2770–2779.

Walters, D.K. et al. (2006) Phosphoproteomic analysis of AML cell lines identifies leukemic oncogenes. *Leuk. Res.* 30, 1097–1104.

Griswold, I.J. et al. (2006) Kinase domain mutants of Bcr-Abl exhibit altered transformation potency, kinase activity, and substrate utilization, irrespective of sensitivity to imatinib. *Mol. Cell. Biol.* 26, 6082–6093.

Gu, T.L. et al. (2006) Phosphotyrosine profiling identifies the KG-1 cell line as a model for the study of FGFR1 fusions in acute myeloid leukemia. *Blood* 108, 4202–4204.

Goss, V.L. et al. (2006) A common phosphotyrosine signature for the Bcr-Abl kinase. *Blood* 107, 4888–4897.

2005

Zhang, Y. et al. (2005) Time-resolved mass spectrometry of tyrosine phosphorylation sites in the epidermal growth factor receptor signaling network reveals dynamic modules. *Mol. Cell Proteomics* 4, 1240–1250.

Rush, J. et al. (2005) Immunoaffinity profiling of tyrosine phosphorylation in cancer cells. *Nat. Biotechnol.* 23, 94–101.

© 08/2011 Cell Signaling Technology, Inc.

Cell Signaling Technology®, CST™, PTMScan®, PhosphoScan®, and XP® are trademarks of Cell Signaling Technology, Inc. Motif antibodies are covered by U.S. Patent Nos.: 6,441,140; 6,982,318; 7,259,022; 7,344,714; U.S. Patent Publication 2007-026461; and all foreign equivalents. Use of Motif antibodies from Cell Signaling Technology (CST) within certain methods (e.g., U.S. Patent Nos.: 7,198,896; 7,300,753; and all foreign equivalents) may require a license from CST. For information regarding academic licensing terms please have your technology transfer office contact CST Legal Department at CST_ip@cellsignal.com. For information regarding commercial licensing terms please contact Pharma Services at ptmscan@cellsignal.com.

Spotfire DecisionSite® is a registered trademark of TIBCO Software, Inc.

All content of this Brochure and Technical Reference is protected by U.S. and foreign intellectual property laws. You may not copy, modify, upload, download, post, transmit, republish or distribute any of the content without our prior written permission except for your own personal and non-commercial purposes. Except as provided in the preceding sentence, nothing contained in this Brochure and Technical Reference shall be construed as granting a license or other rights under any patent, trademark, copyright or other intellectual property of Cell Signaling Technology, Inc. or any third party. Unauthorized use of any Cell Signaling Technology trademark, service mark or logo may be a violation of federal and state trademark laws.

Printed in the USA on 55% recycled paper (30% post-consumer fibers) using soy inks and processed chlorine free.