



Magnificent Marine Environments: 2014 Calendar



Cell Signaling
TECHNOLOGY®



“At Cell Signaling Technology we’ve tried to build our business around sustainable practices, always striving for the smallest possible environmental footprint.”

Michael J. Comb, Ph.D., CST President / Chief Executive Officer



OUR COMMITMENT TO THE ENVIRONMENT

Observing and understanding the array of interactions that shape the living planet on a global level is just as fascinating to us as the complex molecular interactions involved in cellular signaling. As a responsible global corporate citizen, Cell Signaling Technology (CST) recognizes the importance of conserving the earth’s precious natural resources. CST acknowledges that our actions have a direct impact on the planet and we engage in a process of ongoing improvement to sustain and protect the environment.

The fundamental inter-relationship between ourselves and the biosphere inspires us to draw attention to the beauty of marine ecosystems and to some of the organizations that struggle to protect them. We dedicate our annual nature calendar and the CST nature conservancy website to raising awareness of these magnificent marine environments and the special life they support. As part of this effort, CST continues to support nonprofit environmental organizations making a difference in managing, protecting, and conserving the earth’s natural resources and the ecosystems that sustain all life. **Please go to www.eco.cellsignal.com to learn more.**

SUSTAINABILITY AT CST

Concern for how CST impacts our community and the planet gave rise to our sustainability program in 2001. The program is led by our full-time sustainability coordinator and our Green Committee, which is made up of members from nearly every department at CST. This committee meets monthly to discuss and implement sustainable business practices aimed at minimizing the company’s environmental impact. Some of our sustainability initiatives include an award winning Transportation Management Plan, a Waste Diversion Program and Energy Management Program, as well as a LEED Certified Facility. **Please visit www.cellsignal.com/about or email Sustainability@cellsignal.com to learn more.**

This year, CST is supporting 6 organizations that help protect our oceans.

OCEANA

Oceana, founded in 2001, is the largest international organization focused solely on ocean conservation. With offices in North America, Central America, South America and Europe they work together on a limited number of strategic, directed campaigns to achieve measurable outcomes that will help return our oceans to former levels of abundance. We believe in the importance of science in identifying problems and solutions. Our scientists work closely with our teams of economists, lawyers and advocates to achieve tangible results for the oceans. www.oceana.org

CONSERVATION LAW FOUNDATION (CLF)

CLF protects New England’s environment for the benefit of all people. We use the law, science and the market to create solutions that preserve our natural resources, build healthy communities, and sustain a vibrant economy. www.clf.org

IPSWICH RIVER WATERSHED ASSOCIATION

The Ipswich River Watershed Association serves as the voice of the river, dedicated to protecting water quality, healthy stream flows, and the natural habitats, scenic values and recreational opportunities of the Ipswich River Basin and its coastal ecosystem for generations to come through monitoring, education and advocacy. www.ipswichriver.org

NATURE CONSERVANCY

The mission of the Nature Conservancy is to preserve the plants, animals, and natural communities that represent diversity of life on Earth by protecting the lands and waters they need to survive. www.nature.org

NEW ENGLAND AQUARIUM

The New England Aquarium, opened in 1969, is a global leader in ocean exploration and marine conservation, with the vision of a future for the oceans in which resources are used sustainably, critical species and habitats are protected, and ecosystems are managed wisely. It is redefining what it means to be an aquarium; combining education, entertainment and action to address the most challenging problems facing the ocean. Through a wide variety of programs and initiatives, the Aquarium is creating a new generation of ocean stewards and is a force for lasting change. www.neaq.org

LARGE PELAGIC RESEARCH CENTER (LPRC)

LPRC is modeled after the Pelagic Fisheries Research Group (PFRP) in the Pacific, LPRC began as a Center to stimulate and conduct research on key species of interest to commercial and recreational fisheries and marine ecosystems in the Atlantic Ocean. The Center, established in 2003 at the University of New Hampshire, functioned as an academic research group and as a coordinator and source of extramural funding for other large pelagic species research.

In 2010, LPRC joined the Department of Environmental Conservation at the University of Massachusetts-Amherst and the Graduate School of Marine Science. www.tunalab.org



ABOUT CST

FOUNDED BY RESEARCH SCIENTISTS

IN 1999, Cell Signaling Technology (CST) is a private, family-owned company with over 400 employees worldwide. Active in the field of applied systems biology research, particularly as it relates to cancer, CST understands the importance of using antibodies with high levels of specificity and lot-to-lot consistency. It’s why we produce all of our antibodies in house, and perform painstaking validations for multiple applications. And the same CST scientists who produce our antibodies also provide technical support for customers, helping them design experiments, troubleshoot, and achieve reliable results. We do this because that’s what we’d want if we were in the lab. Because, actually, we are.



JANUARY 2014

Adult female Harp Seal (*Pagophilus groenlandicus*) dives through packed ice in the Gulf of St. Lawrence, Canada. Harp Seals migrate to this region from the Arctic to engage in courtship, mating and pupping. © Brian Skerry

SUNDAY 星期日	MONDAY 星期一	TUESDAY 星期二	WEDNESDAY 星期三	THURSDAY 星期四	FRIDAY 星期五	SATURDAY 星期六																																																																																																		
<table border="1"> <tr><td colspan="7">DECEMBER 2013</td></tr> <tr><td>S</td><td>M</td><td>T</td><td>W</td><td>T</td><td>F</td><td>S</td></tr> <tr><td>1</td><td>2</td><td>3</td><td>4</td><td>5</td><td>6</td><td>7</td></tr> <tr><td>8</td><td>9</td><td>10</td><td>11</td><td>12</td><td>13</td><td>14</td></tr> <tr><td>15</td><td>16</td><td>17</td><td>18</td><td>19</td><td>20</td><td>21</td></tr> <tr><td>22</td><td>23</td><td>24</td><td>25</td><td>26</td><td>27</td><td>28</td></tr> <tr><td>29</td><td>30</td><td>31</td><td></td><td></td><td></td><td></td></tr> </table>	DECEMBER 2013							S	M	T	W	T	F	S	1	2	3	4	5	6	7	8	9	10	11	12	13	14	15	16	17	18	19	20	21	22	23	24	25	26	27	28	29	30	31					<table border="1"> <tr><td colspan="7">FEBRUARY</td></tr> <tr><td>S</td><td>M</td><td>T</td><td>W</td><td>T</td><td>F</td><td>S</td></tr> <tr><td></td><td></td><td></td><td></td><td></td><td></td><td>1</td></tr> <tr><td>2</td><td>3</td><td>4</td><td>5</td><td>6</td><td>7</td><td>8</td></tr> <tr><td>9</td><td>10</td><td>11</td><td>12</td><td>13</td><td>14</td><td>15</td></tr> <tr><td>16</td><td>17</td><td>18</td><td>19</td><td>20</td><td>21</td><td>22</td></tr> <tr><td>23</td><td>24</td><td>25</td><td>26</td><td>27</td><td>28</td><td></td></tr> </table>	FEBRUARY							S	M	T	W	T	F	S							1	2	3	4	5	6	7	8	9	10	11	12	13	14	15	16	17	18	19	20	21	22	23	24	25	26	27	28		31	1 New Year's Day • 元旦	2	3	4
DECEMBER 2013																																																																																																								
S	M	T	W	T	F	S																																																																																																		
1	2	3	4	5	6	7																																																																																																		
8	9	10	11	12	13	14																																																																																																		
15	16	17	18	19	20	21																																																																																																		
22	23	24	25	26	27	28																																																																																																		
29	30	31																																																																																																						
FEBRUARY																																																																																																								
S	M	T	W	T	F	S																																																																																																		
						1																																																																																																		
2	3	4	5	6	7	8																																																																																																		
9	10	11	12	13	14	15																																																																																																		
16	17	18	19	20	21	22																																																																																																		
23	24	25	26	27	28																																																																																																			
5	6	7	8	9	10	11																																																																																																		
12	13	14	15	16	17	18																																																																																																		
19	20	21	22	23	24	25																																																																																																		
26	27	28	29	30	31	1																																																																																																		
				除夕	春节																																																																																																			

Please go to www.cellsignal.com/2014conferences for additional information on the conferences we will be sponsoring.



Peacock Flounder (*Bothus mancus*) lies camouflaged in the sand of Lighthouse Reef in Belize. © Brian Skerry

FEBRUARY 2014

SUNDAY 星期日	MONDAY 星期一	TUESDAY 星期二	WEDNESDAY 星期三	THURSDAY 星期四	FRIDAY 星期五	SATURDAY 星期六																																																																																																		
<table border="1"> <tr> <th colspan="7">JANUARY</th> <th colspan="7">MARCH</th> </tr> <tr> <td>S</td><td>M</td><td>T</td><td>W</td><td>T</td><td>F</td><td>S</td> <td>S</td><td>M</td><td>T</td><td>W</td><td>T</td><td>F</td><td>S</td> </tr> <tr> <td>5</td><td>6</td><td>7</td><td>8</td><td>9</td><td>10</td><td>11</td> <td>2</td><td>3</td><td>4</td><td>5</td><td>6</td><td>7</td><td>8</td> </tr> <tr> <td>12</td><td>13</td><td>14</td><td>15</td><td>16</td><td>17</td><td>18</td> <td>9</td><td>10</td><td>11</td><td>12</td><td>13</td><td>14</td><td>15</td> </tr> <tr> <td>19</td><td>20</td><td>21</td><td>22</td><td>23</td><td>24</td><td>25</td> <td>16</td><td>17</td><td>18</td><td>19</td><td>20</td><td>21</td><td>22</td> </tr> <tr> <td>26</td><td>27</td><td>28</td><td>29</td><td>30</td><td>31</td><td></td> <td>23</td><td>24</td><td>25</td><td>26</td><td>27</td><td>28</td><td>29</td> </tr> <tr> <td></td><td></td><td></td><td></td><td></td><td></td><td></td> <td>30</td><td>31</td><td></td><td></td><td></td><td></td><td></td> </tr> </table>		JANUARY							MARCH							S	M	T	W	T	F	S	S	M	T	W	T	F	S	5	6	7	8	9	10	11	2	3	4	5	6	7	8	12	13	14	15	16	17	18	9	10	11	12	13	14	15	19	20	21	22	23	24	25	16	17	18	19	20	21	22	26	27	28	29	30	31		23	24	25	26	27	28	29								30	31						28	29	30	31	1
JANUARY							MARCH																																																																																																	
S	M	T	W	T	F	S	S	M	T	W	T	F	S																																																																																											
5	6	7	8	9	10	11	2	3	4	5	6	7	8																																																																																											
12	13	14	15	16	17	18	9	10	11	12	13	14	15																																																																																											
19	20	21	22	23	24	25	16	17	18	19	20	21	22																																																																																											
26	27	28	29	30	31		23	24	25	26	27	28	29																																																																																											
							30	31																																																																																																
2	3	4	5	6	7	8																																																																																																		
Keystone SYMP: Developmental Pathways & Cancer, CA		Keystone SYMP: Cancer Epigenetics, US																																																																																																						
9	10	11	12	13	14	15																																																																																																		
					Valentine's Day • 元宵节																																																																																																			
16	17	18	19	20	21	22																																																																																																		
	Presidents' Day (US)	Keystone SYMP: Omics Meets Cell Biology, US																																																																																																						
23	24	25	26	27	28	1																																																																																																		

Please go to www.cellsignal.com/2014conferences for additional information on the conferences we will be sponsoring.



MARCH 2014

Soulful eye of a Southern Right Whale (*Eubalaena australis*) in New Zealand's Auckland Islands. Right Whales have callosities, rough patches of skin, over their eyes that become occupied with tiny crustaceans (*Crustacea*). © Brian Skerry

SUNDAY 星期日	MONDAY 星期一	TUESDAY 星期二	WEDNESDAY 星期三	THURSDAY 星期四	FRIDAY 星期五	SATURDAY 星期六																																																																																				
<table border="1"> <tr> <th colspan="7">FEBRUARY</th> <th colspan="7">APRIL</th> </tr> <tr> <td>S</td><td>M</td><td>T</td><td>W</td><td>T</td><td>F</td><td>S</td> <td>S</td><td>M</td><td>T</td><td>W</td><td>T</td><td>F</td><td>S</td> </tr> <tr> <td>2</td><td>3</td><td>4</td><td>5</td><td>6</td><td>7</td><td>8</td> <td>6</td><td>7</td><td>8</td><td>9</td><td>10</td><td>11</td><td>12</td> </tr> <tr> <td>9</td><td>10</td><td>11</td><td>12</td><td>13</td><td>14</td><td>15</td> <td>13</td><td>14</td><td>15</td><td>16</td><td>17</td><td>18</td><td>19</td> </tr> <tr> <td>16</td><td>17</td><td>18</td><td>19</td><td>20</td><td>21</td><td>22</td> <td>20</td><td>21</td><td>22</td><td>23</td><td>24</td><td>25</td><td>26</td> </tr> <tr> <td>23</td><td>24</td><td>25</td><td>26</td><td>27</td><td>28</td><td></td> <td>27</td><td>28</td><td>29</td><td>30</td><td></td><td></td><td></td> </tr> </table>		FEBRUARY							APRIL							S	M	T	W	T	F	S	S	M	T	W	T	F	S	2	3	4	5	6	7	8	6	7	8	9	10	11	12	9	10	11	12	13	14	15	13	14	15	16	17	18	19	16	17	18	19	20	21	22	20	21	22	23	24	25	26	23	24	25	26	27	28		27	28	29	30				25	26	27	28	1
FEBRUARY							APRIL																																																																																			
S	M	T	W	T	F	S	S	M	T	W	T	F	S																																																																													
2	3	4	5	6	7	8	6	7	8	9	10	11	12																																																																													
9	10	11	12	13	14	15	13	14	15	16	17	18	19																																																																													
16	17	18	19	20	21	22	20	21	22	23	24	25	26																																																																													
23	24	25	26	27	28		27	28	29	30																																																																																
2	3	4	5	6	7	8																																																																																				
		Japanese Society for Regenerative Medicine, JP				USCAP, US																																																																																				
9	10	11	12	13	14	15																																																																																				
Keystone SYMP: Inflammation, Infection & Cancer, CA			植树节			妇女节																																																																																				
16	17	18	19	20	21	22																																																																																				
Keystone SYMP: Tumor Metabolism, CA																																																																																										
23	24	25	26	27	28	29																																																																																				
Keystone SYMP: Chromatin Mech. & Cell Physiol., DE																																																																																										
30	31																																																																																									

Please go to www.cellsignal.com/2014conferences for additional information on the conferences we will be sponsoring.



Red Pigfish (*Bodianus unimaculatus*) swims through a school of Blue Maomao (*Scorpius violacea*) in New Zealand's Poor Knights Islands, a no-take marine reserve. © Brian Skerry

APRIL 2014

SUNDAY 星期日		MONDAY 星期一		TUESDAY 星期二		WEDNESDAY 星期三		THURSDAY 星期四		FRIDAY 星期五		SATURDAY 星期六																																																																																																																
<table border="1"> <tr><td colspan="7">MARCH</td><td colspan="5">MAY</td></tr> <tr><td>S</td><td>M</td><td>T</td><td>W</td><td>T</td><td>F</td><td>S</td><td>S</td><td>M</td><td>T</td><td>W</td><td>T</td><td>F</td><td>S</td></tr> <tr><td></td><td></td><td></td><td></td><td></td><td></td><td>1</td><td></td><td></td><td></td><td>1</td><td>2</td><td>3</td><td></td></tr> <tr><td>2</td><td>3</td><td>4</td><td>5</td><td>6</td><td>7</td><td>8</td><td>4</td><td>5</td><td>6</td><td>7</td><td>8</td><td>9</td><td>10</td></tr> <tr><td>9</td><td>10</td><td>11</td><td>12</td><td>13</td><td>14</td><td>15</td><td>11</td><td>12</td><td>13</td><td>14</td><td>15</td><td>16</td><td>17</td></tr> <tr><td>16</td><td>17</td><td>18</td><td>19</td><td>20</td><td>21</td><td>22</td><td>18</td><td>19</td><td>20</td><td>21</td><td>22</td><td>23</td><td>24</td></tr> <tr><td>23</td><td>24</td><td>25</td><td>26</td><td>27</td><td>28</td><td>29</td><td>25</td><td>26</td><td>27</td><td>28</td><td>29</td><td>30</td><td>31</td></tr> <tr><td>30</td><td>31</td><td></td><td></td><td></td><td></td><td></td><td></td><td></td><td></td><td></td><td></td><td></td><td></td></tr> </table>		MARCH							MAY					S	M	T	W	T	F	S	S	M	T	W	T	F	S							1				1	2	3		2	3	4	5	6	7	8	4	5	6	7	8	9	10	9	10	11	12	13	14	15	11	12	13	14	15	16	17	16	17	18	19	20	21	22	18	19	20	21	22	23	24	23	24	25	26	27	28	29	25	26	27	28	29	30	31	30	31													1	2	3	4	5								
MARCH							MAY																																																																																																																					
S	M	T	W	T	F	S	S	M	T	W	T	F	S																																																																																																															
						1				1	2	3																																																																																																																
2	3	4	5	6	7	8	4	5	6	7	8	9	10																																																																																																															
9	10	11	12	13	14	15	11	12	13	14	15	16	17																																																																																																															
16	17	18	19	20	21	22	18	19	20	21	22	23	24																																																																																																															
23	24	25	26	27	28	29	25	26	27	28	29	30	31																																																																																																															
30	31																																																																																																																											
6	7	8	9	10	11	12						AACR, US	清明节																																																																																																															
13	14	15	16	17	18	19																																																																																																																						
20	21	22	23	24	25	26				Good Friday																																																																																																																		
Easter	Easter Monday											EB, US																																																																																																																
27	28	29	30																																																																																																																									

Keystone SYMP: Stem Cells & Reprogramming, US



Cashes Ledge

Located about 80 miles east of Cape Ann, Massachusetts, Cashes Ledge is a unique underwater mountain range which provides refuge for a vibrant, diverse world of ocean wildlife. It's steep ridges, deep basins, and unusual kelp forest, perhaps the largest and deepest in North America, create ideal conditions for marine life such as migrating schools of bluefin tuna, blue and porbeagle sharks, and passing pods of endangered North Atlantic right whales and humpback whales. Please go to www.eco.cellsignal.com/cashesledge to read more.

Please go to www.cellsignal.com/2014conferences for additional information on the conferences we will be sponsoring.



MAY 2014

Female West Indian Manatee (*Trichechus manatus*) with her calf within the Swallow Caye region off the coast of Belize. © Brian Skerry

SUNDAY 星期日							MONDAY 星期一							TUESDAY 星期二							WEDNESDAY 星期三							THURSDAY 星期四							FRIDAY 星期五							SATURDAY 星期六																																																																																																						
<table border="1"> <tr> <th colspan="7">APRIL</th> <th colspan="7">JUNE</th> </tr> <tr> <td>S</td><td>M</td><td>T</td><td>W</td><td>T</td><td>F</td><td>S</td> <td>S</td><td>M</td><td>T</td><td>W</td><td>T</td><td>F</td><td>S</td> </tr> <tr> <td>6</td><td>7</td><td>8</td><td>9</td><td>10</td><td>11</td><td>12</td> <td>1</td><td>2</td><td>3</td><td>4</td><td>5</td><td>6</td><td>7</td> </tr> <tr> <td>13</td><td>14</td><td>15</td><td>16</td><td>17</td><td>18</td><td>19</td> <td>8</td><td>9</td><td>10</td><td>11</td><td>12</td><td>13</td><td>14</td> </tr> <tr> <td>20</td><td>21</td><td>22</td><td>23</td><td>24</td><td>25</td><td>26</td> <td>15</td><td>16</td><td>17</td><td>18</td><td>19</td><td>20</td><td>21</td> </tr> <tr> <td>27</td><td>28</td><td>29</td><td>30</td><td></td><td></td><td></td> <td>22</td><td>23</td><td>24</td><td>25</td><td>26</td><td>27</td><td>28</td> </tr> <tr> <td></td><td></td><td></td><td></td><td></td><td></td><td></td> <td>29</td><td>30</td><td></td><td></td><td></td><td></td><td></td> </tr> </table>														APRIL							JUNE							S	M	T	W	T	F	S	S	M	T	W	T	F	S	6	7	8	9	10	11	12	1	2	3	4	5	6	7	13	14	15	16	17	18	19	8	9	10	11	12	13	14	20	21	22	23	24	25	26	15	16	17	18	19	20	21	27	28	29	30				22	23	24	25	26	27	28								29	30						29	30	1	2	3	4	5	6	7	8	9	10	11	12	13	14	15	16	17	18	19	20	21	22	23	24	25	26	27	28	29	30	31
APRIL							JUNE																																																																																																																																									
S	M	T	W	T	F	S	S	M	T	W	T	F	S																																																																																																																																			
6	7	8	9	10	11	12	1	2	3	4	5	6	7																																																																																																																																			
13	14	15	16	17	18	19	8	9	10	11	12	13	14																																																																																																																																			
20	21	22	23	24	25	26	15	16	17	18	19	20	21																																																																																																																																			
27	28	29	30				22	23	24	25	26	27	28																																																																																																																																			
							29	30																																																																																																																																								
ARVO, US														劳动节 AAI, US														Conference on SUMO, Ubiquitin, UBL Proteins, CN																																																																																																																				
青年节														Mother's Day														Victoria Day (CA)														Keystone SYMP: Autophagy, US																																																																																																						
Japanese Society Epigenetics, JP														Memorial Day (US)														Ascension Day (EU)																																																																																																																				

Please go to www.cellsignal.com/2014conferences for additional information on the conferences we will be sponsoring.



Whale Shark (*Rhincodon typus*), surrounded by baitfish, swims near the surface off Yucatan, Mexico. © Brian Skerry

JUNE 2014

SUNDAY 星期日	MONDAY 星期一	TUESDAY 星期二	WEDNESDAY 星期三	THURSDAY 星期四	FRIDAY 星期五	SATURDAY 星期六
1	2	3	4	5	6	7
儿童节	端午节					
8	9	10	11	12	13	14
Whit Sunday (EU)	Whit Monday (EU)					
15	16	17	18	19	20	21
ASMS, US Father's Day			ISSCR, CA			ICE/ENDO, US
22	23	24	25	26	27	28
						Ramadan
29	30					

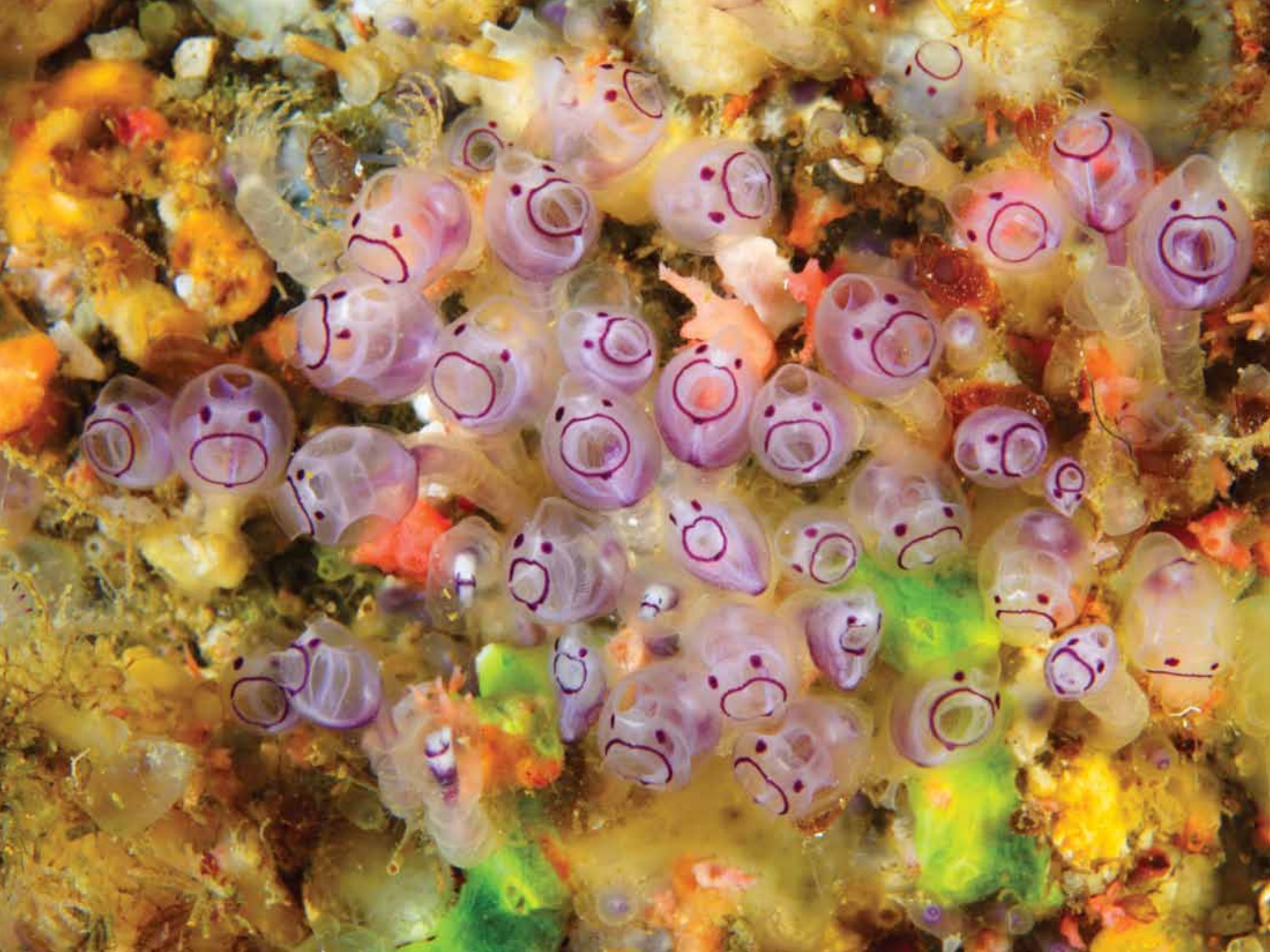


Mediterranean Project "MedNet"

Despite being considered one of the planet's most important areas for marine biodiversity, only 4% of the Mediterranean Sea is protected. MedNet, a project run by Oceana, is a proposal for the first comprehensive network of Marine Protected Areas (MPA) for the Mediterranean Sea that details specific locations. Please go to www.eco.cellsignal.com/mednet to read more.

MAY							JULY						
S	M	T	W	T	F	S	S	M	T	W	T	F	S
				1	2	3							
4	5	6	7	8	9	10	6	7	8	9	10	11	12
11	12	13	14	15	16	17	13	14	15	16	17	18	19
18	19	20	21	22	23	24	20	21	22	23	24	25	26
25	26	27	28	29	30	31	27	28	29	30	31		

Please go to www.cellsignal.com/2014conferences for additional information on the conferences we will be sponsoring.



JULY 2014

Colony of Tunicates (*Urochordata*) living on the wall of an undersea cave off Chichijima Island, Japan. These animals are endemic to this one cave and are found nowhere else in the world. © Brian Skerry

SUNDAY 星期日							MONDAY 星期一							TUESDAY 星期二							WEDNESDAY 星期三							THURSDAY 星期四							FRIDAY 星期五							SATURDAY 星期六																																																																																																															
<table border="1"> <tr><th colspan="7">JUNE</th></tr> <tr><td>S</td><td>M</td><td>T</td><td>W</td><td>T</td><td>F</td><td>S</td></tr> <tr><td>1</td><td>2</td><td>3</td><td>4</td><td>5</td><td>6</td><td>7</td></tr> <tr><td>8</td><td>9</td><td>10</td><td>11</td><td>12</td><td>13</td><td>14</td></tr> <tr><td>15</td><td>16</td><td>17</td><td>18</td><td>19</td><td>20</td><td>21</td></tr> <tr><td>22</td><td>23</td><td>24</td><td>25</td><td>26</td><td>27</td><td>28</td></tr> <tr><td>29</td><td>30</td><td></td><td></td><td></td><td></td><td></td></tr> </table>							JUNE							S	M	T	W	T	F	S	1	2	3	4	5	6	7	8	9	10	11	12	13	14	15	16	17	18	19	20	21	22	23	24	25	26	27	28	29	30						<table border="1"> <tr><th colspan="7">AUGUST</th></tr> <tr><td>S</td><td>M</td><td>T</td><td>W</td><td>T</td><td>F</td><td>S</td></tr> <tr><td></td><td></td><td></td><td></td><td></td><td>1</td><td>2</td></tr> <tr><td>3</td><td>4</td><td>5</td><td>6</td><td>7</td><td>8</td><td>9</td></tr> <tr><td>10</td><td>11</td><td>12</td><td>13</td><td>14</td><td>15</td><td>16</td></tr> <tr><td>17</td><td>18</td><td>19</td><td>20</td><td>21</td><td>22</td><td>23</td></tr> <tr><td>24</td><td>25</td><td>26</td><td>27</td><td>28</td><td>29</td><td>30</td></tr> <tr><td>31</td><td></td><td></td><td></td><td></td><td></td><td></td></tr> </table>							AUGUST							S	M	T	W	T	F	S						1	2	3	4	5	6	7	8	9	10	11	12	13	14	15	16	17	18	19	20	21	22	23	24	25	26	27	28	29	30	31							1							2							3							4							5						
JUNE																																																																																																																																																									
S	M	T	W	T	F	S																																																																																																																																																			
1	2	3	4	5	6	7																																																																																																																																																			
8	9	10	11	12	13	14																																																																																																																																																			
15	16	17	18	19	20	21																																																																																																																																																			
22	23	24	25	26	27	28																																																																																																																																																			
29	30																																																																																																																																																								
AUGUST																																																																																																																																																									
S	M	T	W	T	F	S																																																																																																																																																			
					1	2																																																																																																																																																			
3	4	5	6	7	8	9																																																																																																																																																			
10	11	12	13	14	15	16																																																																																																																																																			
17	18	19	20	21	22	23																																																																																																																																																			
24	25	26	27	28	29	30																																																																																																																																																			
31																																																																																																																																																									
6							7							8							9							10							11							12																																																																																																															
13							14							15							16							17							18							19																																																																																																															
20							21							22							23							24							25							26																																																																																																															
27							28							29							30							31							1							2																																																																																																															

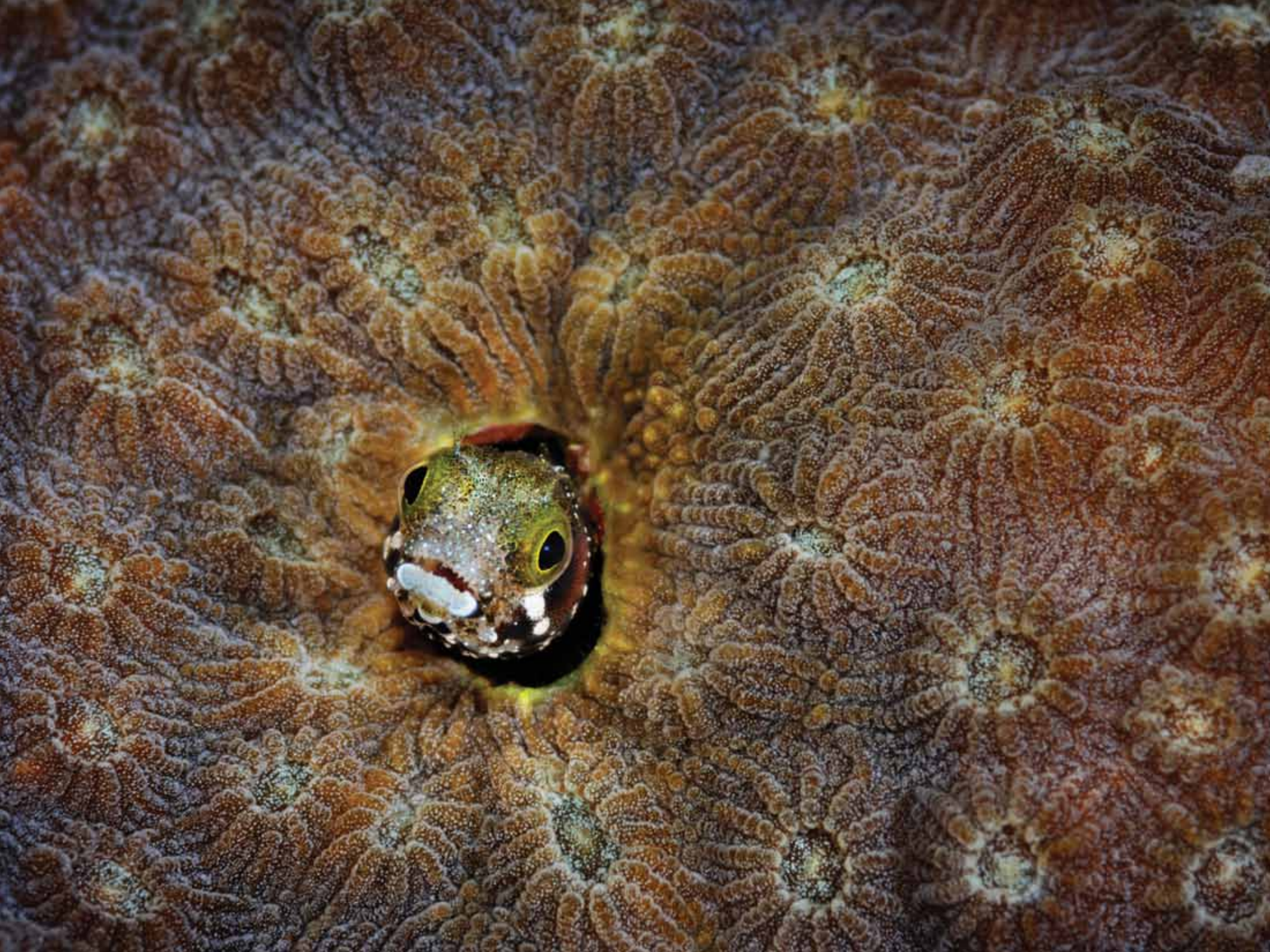
Canada Day (CA) • 建党节

Independence Day (US)

EACR Congress, DE | FENS, IT

Please go to www.cellsignal.com/2014conferences for additional information on the conferences we will be sponsoring.





SEPTEMBER 2014

Spinyhead Blenny (*Acanthemblemaria spinosa*) emerges from its coral home to feed at Lighthouse Reef, Belize. © Brian Skerry

SUNDAY 星期日	MONDAY 星期一	TUESDAY 星期二	WEDNESDAY 星期三	THURSDAY 星期四	FRIDAY 星期五	SATURDAY 星期六																																																																																																																
31	1 Labor Day	2	3	4	5	6 EMBO: Molecular & Cellular Basis of Regeneration & Tissue Repair, ES EMBO: Ubiquitin & Related Modifiers, IT																																																																																																																
7	8 中秋节	9	10 Biochemistry, Biology & Pathology of MAP Kinases II, LT 教师节	11	12	13																																																																																																																
14 AACR: Targeting PI3K/mTOR Networks in Cancer, US	15	16	17	18	19	20 AACR: Melanoma, US																																																																																																																
21	22	23	24	25 Japanese Cancer Assoc, JP Rosh Hashanah	26	27 SEBD, ES																																																																																																																
28 AACR: Int'l Confer. on Frontiers in Cancer Prevention, US FASEB SRC: AMPK, IT	29	30	1	2	<table border="1"> <thead> <tr> <th colspan="7">AUGUST</th> <th colspan="7">OCTOBER</th> </tr> <tr> <th>S</th><th>M</th><th>T</th><th>W</th><th>T</th><th>F</th><th>S</th> <th>S</th><th>M</th><th>T</th><th>W</th><th>T</th><th>F</th><th>S</th> </tr> </thead> <tbody> <tr> <td></td><td></td><td></td><td></td><td></td><td>1</td><td>2</td> <td>5</td><td>6</td><td>7</td><td>8</td><td>9</td><td>10</td><td>11</td> </tr> <tr> <td>3</td><td>4</td><td>5</td><td>6</td><td>7</td><td>8</td><td>9</td> <td>12</td><td>13</td><td>14</td><td>15</td><td>16</td><td>17</td><td>18</td> </tr> <tr> <td>10</td><td>11</td><td>12</td><td>13</td><td>14</td><td>15</td><td>16</td> <td>19</td><td>20</td><td>21</td><td>22</td><td>23</td><td>24</td><td>25</td> </tr> <tr> <td>17</td><td>18</td><td>19</td><td>20</td><td>21</td><td>22</td><td>23</td> <td>26</td><td>27</td><td>28</td><td>29</td><td>30</td><td>31</td><td></td> </tr> <tr> <td>24</td><td>25</td><td>26</td><td>27</td><td>28</td><td>29</td><td>30</td> <td></td><td></td><td></td><td></td><td></td><td></td><td></td> </tr> <tr> <td>31</td><td></td><td></td><td></td><td></td><td></td><td></td> <td></td><td></td><td></td><td></td><td></td><td></td><td></td> </tr> </tbody> </table>		AUGUST							OCTOBER							S	M	T	W	T	F	S	S	M	T	W	T	F	S						1	2	5	6	7	8	9	10	11	3	4	5	6	7	8	9	12	13	14	15	16	17	18	10	11	12	13	14	15	16	19	20	21	22	23	24	25	17	18	19	20	21	22	23	26	27	28	29	30	31		24	25	26	27	28	29	30								31													
AUGUST							OCTOBER																																																																																																															
S	M	T	W	T	F	S	S	M	T	W	T	F	S																																																																																																									
					1	2	5	6	7	8	9	10	11																																																																																																									
3	4	5	6	7	8	9	12	13	14	15	16	17	18																																																																																																									
10	11	12	13	14	15	16	19	20	21	22	23	24	25																																																																																																									
17	18	19	20	21	22	23	26	27	28	29	30	31																																																																																																										
24	25	26	27	28	29	30																																																																																																																
31																																																																																																																						

Please go to www.cellsignal.com/2014conferences for additional information on the conferences we will be sponsoring.



Small Remora (*Echeneidae*) swims in the mouth of a Whale Shark (*Rhincodon typus*) in the waters off the Yucatan Peninsula, Mexico. © Brian Skerry

OCTOBER 2014

SUNDAY 星期日	MONDAY 星期一	TUESDAY 星期二	WEDNESDAY 星期三	THURSDAY 星期四	FRIDAY 星期五	SATURDAY 星期六																																																																																																															
<table border="1"> <tr><td colspan="7">SEPTEMBER</td><td colspan="7">NOVEMBER</td></tr> <tr><td>S</td><td>M</td><td>T</td><td>W</td><td>T</td><td>F</td><td>S</td><td>S</td><td>M</td><td>T</td><td>W</td><td>T</td><td>F</td><td>S</td></tr> <tr><td></td><td>1</td><td>2</td><td>3</td><td>4</td><td>5</td><td>6</td><td></td><td></td><td></td><td></td><td></td><td></td><td>1</td></tr> <tr><td>7</td><td>8</td><td>9</td><td>10</td><td>11</td><td>12</td><td>13</td><td>2</td><td>3</td><td>4</td><td>5</td><td>6</td><td>7</td><td>8</td></tr> <tr><td>14</td><td>15</td><td>16</td><td>17</td><td>18</td><td>19</td><td>20</td><td>9</td><td>10</td><td>11</td><td>12</td><td>13</td><td>14</td><td>15</td></tr> <tr><td>21</td><td>22</td><td>23</td><td>24</td><td>25</td><td>26</td><td>27</td><td>16</td><td>17</td><td>18</td><td>19</td><td>20</td><td>21</td><td>22</td></tr> <tr><td>28</td><td>29</td><td>30</td><td></td><td></td><td></td><td></td><td>23</td><td>24</td><td>25</td><td>26</td><td>27</td><td>28</td><td>29</td></tr> <tr><td></td><td></td><td></td><td></td><td></td><td></td><td></td><td>30</td><td></td><td></td><td></td><td></td><td></td><td></td></tr> </table>	SEPTEMBER							NOVEMBER							S	M	T	W	T	F	S	S	M	T	W	T	F	S		1	2	3	4	5	6							1	7	8	9	10	11	12	13	2	3	4	5	6	7	8	14	15	16	17	18	19	20	9	10	11	12	13	14	15	21	22	23	24	25	26	27	16	17	18	19	20	21	22	28	29	30					23	24	25	26	27	28	29								30							30	1	2	3	4
SEPTEMBER							NOVEMBER																																																																																																														
S	M	T	W	T	F	S	S	M	T	W	T	F	S																																																																																																								
	1	2	3	4	5	6							1																																																																																																								
7	8	9	10	11	12	13	2	3	4	5	6	7	8																																																																																																								
14	15	16	17	18	19	20	9	10	11	12	13	14	15																																																																																																								
21	22	23	24	25	26	27	16	17	18	19	20	21	22																																																																																																								
28	29	30					23	24	25	26	27	28	29																																																																																																								
							30																																																																																																														
5	6	7	8	9	10	11																																																																																																															
HUPO, ES			CH: Discovery on Target, US	Nat'l Confer. of Immunology, CN																																																																																																																	
12	13	14	15	16	17	18																																																																																																															
	Columbus Day (US) Thanksgiving (CA)																																																																																																																				
19	20	21	22	23	24	25																																																																																																															
26	27	28	29	30	31	1																																																																																																															
					Halloween	Muharram																																																																																																															

Please go to www.cellsignal.com/2014conferences for additional information on the conferences we will be sponsoring.



NOVEMBER 2014

Life within a kelp forest on an undersea mountain range called Cortes Banks located 100-miles off San Diego, CA. © Brian Skerry

SUNDAY 星期日		MONDAY 星期一		TUESDAY 星期二		WEDNESDAY 星期三		THURSDAY 星期四		FRIDAY 星期五		SATURDAY 星期六																																																																																					
<table border="1"> <tr> <th colspan="7">OCTOBER</th> <th colspan="7">DECEMBER</th> </tr> <tr> <td>S</td><td>M</td><td>T</td><td>W</td><td>T</td><td>F</td><td>S</td> <td>S</td><td>M</td><td>T</td><td>W</td><td>T</td><td>F</td><td>S</td> </tr> <tr> <td>5</td><td>6</td><td>7</td><td>8</td><td>9</td><td>10</td><td>11</td> <td>7</td><td>8</td><td>9</td><td>10</td><td>11</td><td>12</td><td>13</td> </tr> <tr> <td>12</td><td>13</td><td>14</td><td>15</td><td>16</td><td>17</td><td>18</td> <td>14</td><td>15</td><td>16</td><td>17</td><td>18</td><td>19</td><td>20</td> </tr> <tr> <td>19</td><td>20</td><td>21</td><td>22</td><td>23</td><td>24</td><td>25</td> <td>21</td><td>22</td><td>23</td><td>24</td><td>25</td><td>26</td><td>27</td> </tr> <tr> <td>26</td><td>27</td><td>28</td><td>29</td><td>30</td><td>31</td><td></td> <td>28</td><td>29</td><td>30</td><td>31</td><td></td><td></td><td></td> </tr> </table>		OCTOBER							DECEMBER							S	M	T	W	T	F	S	S	M	T	W	T	F	S	5	6	7	8	9	10	11	7	8	9	10	11	12	13	12	13	14	15	16	17	18	14	15	16	17	18	19	20	19	20	21	22	23	24	25	21	22	23	24	25	26	27	26	27	28	29	30	31		28	29	30	31				28	29	30	31	1							
OCTOBER							DECEMBER																																																																																										
S	M	T	W	T	F	S	S	M	T	W	T	F	S																																																																																				
5	6	7	8	9	10	11	7	8	9	10	11	12	13																																																																																				
12	13	14	15	16	17	18	14	15	16	17	18	19	20																																																																																				
19	20	21	22	23	24	25	21	22	23	24	25	26	27																																																																																				
26	27	28	29	30	31		28	29	30	31																																																																																							
2	3	4	5	6	7	8																																																																																											
9	10	11	12	13	14	15																																																																																											
16	17	Veterans Day (US)	19	20	21	22				STN, US																																																																																							
23	24	EORTC-NCI-AACR Int'l SYMP, ES	26	27	28	29																																																																																											
30										Thanksgiving (US)																																																																																							

Please go to www.cellsignal.com/2014conferences for additional information on the conferences we will be sponsoring.

UNITED STATES

Hours: M-F 8:30AM to 8:00PM [EST]
Orders: 877-616-2355 | orders@cellsignal.com
Support: 877-678-8324 | support@cellsignal.com
www.cellsignal.com

CHINA

Tel: +86-21-58356288
Support (China): 4006-473287/GreatQ
tech@cst-c.com.cn
Support (Asia Pacific): csttechasia@cst-c.com.cn
www.cst-c.com.cn

EUROPE, MIDDLE EAST & AFRICA

Tel: +31 (0)71 568 1060
E-mail: eusupport@cellsignal.eu
www.cellsignal.com

JAPAN

Tel: 03-3295-1630 | Support: info@cstj.co.jp
www.cstj.co.jp

AUTHORIZED DISTRIBUTORS

See a full list of our distributors online.
www.cellsignal.com/distributors



Brian Skerry
Photojournalist
specializing in
marine wildlife
and underwater
environments.

Since 1998, Brian Skerry has been a contract photographer for National Geographic Magazine (NGM) covering a wide range of subjects and stories.

An award-winning photographer, Brian is praised worldwide for his aesthetic sense as well as his journalistic drive for relevance. His uniquely-creative images tell stories that not only celebrate the mystery and beauty of the sea, but also help bring attention to the large number of issues that endanger our oceans and its inhabitants.

For NGM, Brian has covered a wide range of topics, from the harp seal's struggle to survive in frozen waters to the alarming decrease in the world's fisheries, both cover stories.

Other features have focused on subjects such as the planet's last remaining pristine coral reefs, the plight of the right whale, sharks of the Bahamas, marine reserves, sea turtles and squid. He is currently at work on his 20th story for NGM.

Brian has also worked on assignment for or had images featured in magazines such as Sports Illustrated, US News and World Report, BBC Wildlife, GEO, Smithsonian, Esquire, Audubon, and Men's Journal. His latest monograph Ocean Soul, released in November, has received worldwide acclaim.

Brian frequently lectures on photography and conservation issues, having presented at venues such as TED Talks, The National Press Club in Washington, DC and the Royal Geo-

graphical Society in London. He is also a regular guest on programs such as NBC's TODAY Show, CBS's Sunday Morning, and ABC's Good Morning America. Additionally, Brian is the Explorer-In Residence at the New England Aquarium in Boston.

In 2010 NGM named one of Brian's images among their 50 Greatest Photographs Of All Time. In 2011, he had single photographer exhibits at Visa Pour l'Image in Perpignan, France, The G2 Gallery in Los Angeles, and the National Geographic Museum in Washington, DC.

Please go to www.brianskerry.com to learn more about Brian Skerry.

