

Wortmannin

1 mg

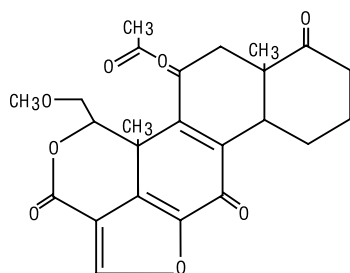
Orders ■ 877-616-CELL (2355)
orders@cellsignal.com
Support ■ 877-678-TECH (8324)
info@cellsignal.com
Web ■ www.cellsignal.com

rev. 06/06/19

For Research Use Only. Not For Use In Diagnostic Procedures.

Background: Wortmannin is a very potent, specific and direct inhibitor of PI3 kinase, originally derived from fungus (1,2). The inhibition is irreversible and noncompetitive. Wortmannin does not inhibit PI4 kinase, protein kinase C or protein tyrosine kinase (3).

Molecular Formula: C₂₃H₂₄O₈

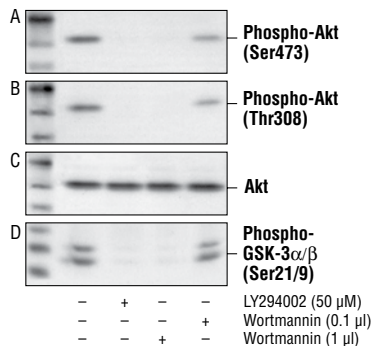


Molecular Weight: 428.4 g/mol

Directions for Use: For 2 mM stock, dissolve 1 mg in 1.16 ml DMSO. For experiments with cultured cells, CST recommends treating with wortmannin at concentrations between 0.2 μM and 1 μM, for one hour prior to, and for the duration of, the stimulation. See MSDS for further information.

Background References:

- (1) Nakanishi, S. et al. (1992) *J. Biol. Chem.* 267, 2157-2163.
- (2) Arcaro, A. and Wymann, M.P. (1993) *Biochem. J.* 296, 297-301.
- (3) Powis, G. et al. (1994) *Cancer Res.* 54, 5241-5248.



Western blot analysis of extracts from untreated, wortmannin and/or LY294002 treated Jurkat cells, using Phospho-Akt (Ser473) Antibody #9271 (A), Phospho-Akt (Thr308) Antibody #9275 (B), Akt Antibody #9272 (C) and Phospho-GSK-3α/β (Ser21/9) Antibody #9331 (D).

Storage: Store lyophilized or in solution at -20°C, desiccated. Protect from light. In lyophilized form, the chemical is stable for 24 months. Once in solution, use within 3 months to prevent loss of potency. Aliquot to avoid multiple freeze/thaw cycles.