

# Docetaxel

✓ 1 mg

**Orders** ■ 877-616-CELL (2355)  
orders@cellsignaling.com

**Support** ■ 877-678-TECH (8324)  
info@cellsignaling.com

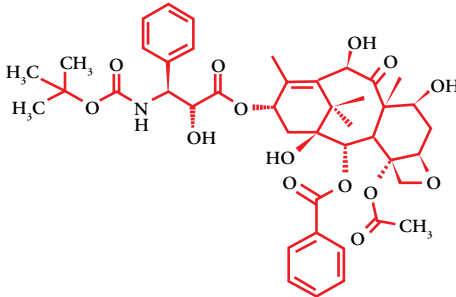
**Web** ■ www.cellsignaling.com

rev. 03/15/18

**For Research Use Only. Not For Use In Diagnostic Procedures.**

**Background:** Docetaxel belongs to the taxane family of anti-tumor and antileukemic agents (1). A microtubule-stabilizing agent, docetaxel acts as an inhibitor of cellular functions that require microtubule dynamics including cell division, and is now in use as a treatment for breast, prostate and lung cancer (2).

**Molecular Formula:** C<sub>43</sub>H<sub>53</sub>NO<sub>14</sub>

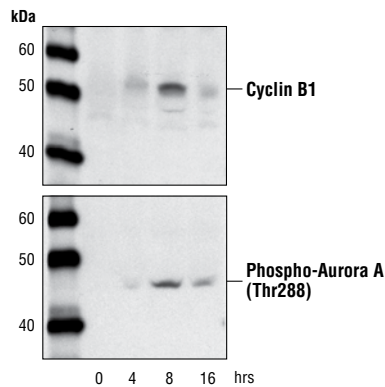


**Molecular Weight:** 807.89 g/mol

**Directions for Use:** Docetaxel is supplied as 1 mg powder. Store at or below -20°C. Before use, dissolve powder in 1 ml DMSO to make a 1 mg/ml stock solution. The suggested working concentration is 100 ng/ml in tissue culture medium. Treat cells with the desired concentration for 4-24 hours. Store solution at -20°C.

**Background References:**

- (1) Abal, M. et al. (2003) *Curr Cancer Drug Targets* 3, 193–203.
- (2) Crown, J. and O'Leary, M. (2000) *Lancet* 355, 1176–8.



Western blot analysis of extracts from HT-29 cells treated with Docetaxel (100 ng/ml) for the indicated times using Cyclin B1 Antibody #4138 (upper) or Phospho-Aurora A (Thr288) (C39D8) Rabbit mAb #3079 (lower).

**Storage:** Store lyophilized or in solution at -20°C, desiccated. In lyophilized form, the chemical is stable for 24 months. Once in solution, use within 3 months to prevent loss of potency. Aliquot to avoid multiple freeze/thaw cycles.