

Store at
-20°C

#98646

Total ApoE Matched Antibody Pair



Support: +1-978-867-2388 (U.S.)
cellsignal.com/support

Orders: 877-616-2355 (U.S.)
orders@cellsignal.com

Entrez-Gene ID #11816
UniProt ID #P08226

For Research Use Only. Not for Use in Diagnostic Procedures.

Product Includes	Product #	Quantity	Isotype
ApoE (pan) (D719N) Rabbit mAb (BSA and Azide Free)	10197	100 µg	Rabbit IgG
ApoE (E7X2A) Rabbit mAb (BSA and Azide Free)	20769	100 µg	Rabbit IgG

Species Reactivity: M

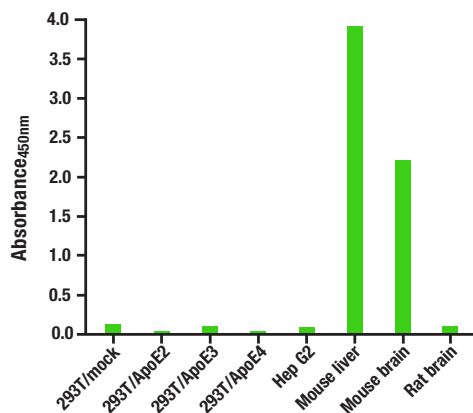
Description: The Total ApoE Matched Antibody Pair is ideal for use with immunoassay technologies and high throughput ELISA platforms requiring antibody pairs with specialized or custom antibody labeling. Labels include fluorophores, lanthanides, biotin, and beads. Platforms requiring conjugated Matched Antibody Pairs include MSD, Quanterix Simoa, Alpha Technology (AlphaScreen, AlphaLISA, LANCE, HTRF), and Luminex.

Learn how Matched Antibody Pairs move your projects forward, faster at cst-science.com/matched-antibody-pairs.

Background: Apolipoproteins are plasma lipoproteins that function as transporters of lipids and cholesterol in the circulatory system. Chylomicrons are a fundamental class of apolipoproteins containing very low-density lipoproteins (VLDL), intermediate-density lipoproteins (IDL), low-density lipoproteins (LDL), and high-density lipoproteins (HDL) (1,2).

Specificity/Sensitivity: This kit detects proteins from the indicated species, as determined through in-house testing, but may also detect homologous proteins from other species.

Formulation: Supplied in 1X PBS (10 mM Na₂HPO₄, 3 mM KCl, 2 mM KH₂PO₄, and 140 mM NaCl (pH 7.8)). BSA and Azide Free.



Data using Total ApoE Matched Antibody Pair #98646 are shown. The two antibodies function as a capture-target-detection sandwich (#10197 and #20769, respectively) to detect mouse ApoE protein but not human or rat ApoE in various cells and tissues, as shown in the figure.

Storage: Store at -20°C. This product will freeze at -20°C so it is recommended to aliquot into single-use vials to avoid multiple freeze/thaw cycles. A slight precipitate may be present and can be dissolved by gently vortexing. This will not interfere with antibody performance.

Please visit cellsignal.com for validation data and a complete listing of recommended companion products.

Directions for Use: Matched Antibody Pairs include capture and detection antibodies to non-overlapping epitopes. Optimal dilutions/concentrations should be determined by the end user.

Background References:

- (1) Kwiterovich, P.O. (2000) *Am J Cardiol* 86, 5L-10L.
- (2) Hussain, M.M. (2000) *Atherosclerosis* 148, 1-15.

All other trademarks are the property of their respective owners. Visit cellsignal.com/trademarks for more information.

Thank you for your recent purchase. If you would like to provide a review visit cellsignal.com/comments.

cellsignal.com