

# Protein A Agarose Beads

- 1 ml  
(50 immunoprecipitations)
- 200  $\mu$ l  
(10 immunoprecipitations)

**Orders** ■ 877-616-CELL (2355)  
orders@cellsignal.com

**Support** ■ 877-678-TECH (8324)  
info@cellsignal.com

**Web** ■ www.cellsignal.com

rev. 06/14/18

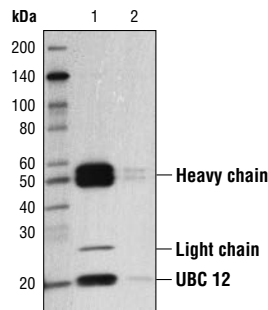
**For Research Use Only. Not For Use In Diagnostic Procedures.**

**Description:** Protein A Agarose Beads are an affinity matrix for the small-scale isolation of immunocomplexes from immunoprecipitations (IP assays). Protein A is covalently coupled to agarose beads. Protein A exhibits high affinity for subclasses of IgG from many species (including human, rabbit, mouse, rat, and sheep) and can be used for immunoprecipitation assays with these antibodies.

**Directions for Use:** Vortex tube briefly to resuspend the beads. Add 20  $\mu$ l of bead slurry to each immunoprecipitation (IP) reaction. For bead washing and subsequent elution of immunocomplexes, the beads can be separated from solution by a brief 1 minute centrifugation in a microcentrifuge at 6,000 rpm. Resuspend the beads in solution by gently vortexing or rocking the tube. Please follow CST's recommended IP protocol to perform IP followed by western blot.

**Product Specifications:**

Bead Diameter: 45-165 micron per bead  
Binding Capacity: 20 +/- 2 mg human IgG/ml



*Immunoprecipitation (IP) of COS-7 cell extracts using Ubc12 (D13D7) Rabbit mAb #5641 and Protein A Agarose Beads #9863. Western blot analysis was performed on the IP pellet (lane 1) and supernatant (lane 2) using Ubc12 (D13D7) Rabbit mAb #5641.*

**Storage:** Supplied as a 50% slurry in 18.5% ethanol solution. This product is stable for 12 months when stored at 4°C.