

Store at
-20°C

#97780

ARID4A/RbBP1 Antibody

Cell Signaling
TECHNOLOGY®Support: +1-978-867-2388 (U.S.)
www.cellsignal.com/supportOrders: 877-616-2355 (U.S.)
orders@cellsignal.comEntrez-Gene ID #5926
UniProt ID #P29374

rev. 10/16/19

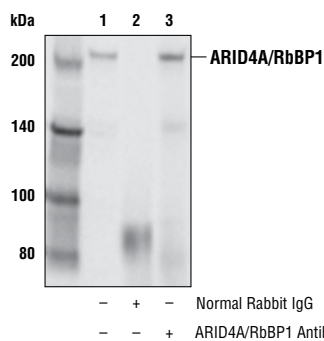
For Research Use Only. Not For Use In Diagnostic Procedures.

Applications W, IP Endogenous	Species Cross-Reactivity* H, Mk	Molecular Wt. 205 kDa	Source Rabbit**
-------------------------------------	------------------------------------	--------------------------	--------------------

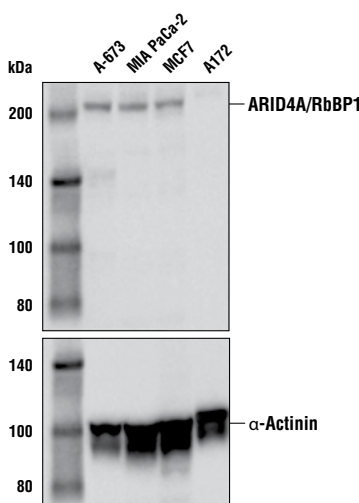
Background: ARID4A/RbBP1 was originally identified as an RB binding protein, which could repress E2F-mediated transcription through the recruitment of the mSIN3A complex (1-3). Like other AT-rich interacting domain (ARID) containing proteins, ARID4A/RbBP1 functions as a tumor suppressor, and is frequently mutated in colorectal cancer (4-6). ARID4A/RbBP1 and ARID4B/RbBP1L1 are mainly expressed in Sertoli cells in the testes, where they form a complex and serve as coactivators for androgen receptors to regulate spermatogenesis (7).

Specificity/Sensitivity: ARID4A/RbBP1 Antibody recognizes endogenous levels of total ARID4A/RbBP1 protein.

Source/Purification: Polyclonal antibodies are produced by immunizing animals with a synthetic peptide corresponding to residues surrounding Gly813 of human ARID4A/RbBP1 protein. Antibodies are purified by peptide affinity chromatography.



Immunoprecipitation of ARID4A/RbBP1 from A-673 cell extracts. Lane 1 is 10% input, lane 2 is Normal Rabbit IgG #2729, and lane 3 is ARID4A/RbBP1 Antibody. Western blot analysis was performed using ARID4A/RbBP1 Antibody. Anti-rabbit IgG, HRP-linked Antibody #7074 was used as a secondary antibody.



Western blot analysis of extracts from various cell lines using ARID4A/RbBP1 Antibody (upper) or α -Actinin (D6F6) XP Rabbit mAb #6487 (lower). As expected, A172 cells are negative for ARID4A/RbBP1 expression.

Storage: Supplied in 10 mM sodium HEPES (pH 7.5), 150 mM NaCl, 100 μ g/ml BSA and 50% glycerol. Store at -20°C . Do not aliquot the antibody.

*Species cross-reactivity is determined by western blot.

**Anti-rabbit secondary antibodies must be used to detect this antibody.

Recommended Antibody Dilutions:

Western blotting	1:1000
Immunoprecipitation	1:100

For product specific protocols and a complete listing of recommended companion products please see the product web page at www.cellsignal.com.

Background References:

- (1) Defeo-Jones, D. et al. (1991) *Nature* 352, 251-4.
- (2) Lai, A. et al. (1999) *Oncogene* 18, 2091-100.
- (3) Lai, A. et al. (1999) *Mol Cell Biol* 19, 6632-41.
- (4) Hurst, D.R. et al. (2008) *J Biol Chem* 283, 7438-44.
- (5) Wu, M.Y. et al. (2008) *J Natl Cancer Inst* 100, 1247-59.
- (6) Cajuso, T. et al. (2014) *Int J Cancer* 135, 611-23.
- (7) Wu, R.C. et al. (2013) *Proc Natl Acad Sci U S A* 110, 4616-21.

Tween is a registered trademark of ICI Americas, Inc.

IMPORTANT: For western blots, incubate membrane with diluted antibody in 5% w/v BSA, 1X TBS, 0.1% Tween®20 at 4°C with gentle shaking, overnight.

Thank you for your recent purchase. If you would like to provide a review visit cellsignal.com/comments.

www.cellsignal.com

© 2019 Cell Signaling Technology, Inc.

XP and Cell Signaling Technology are trademarks of Cell Signaling Technology, Inc.

Applications: W—Western IP—Immunoprecipitation IHC—Immunohistochemistry ChIP—Chromatin Immunoprecipitation IF—Immunofluorescence F—Flow cytometry E-P—ELISA-Peptide Species Cross-Reactivity: H—human M—mouse R—rat Hm—hamster Mk—monkey Mi—mink C—chicken Dm—D. melanogaster X—Xenopus Z—zebrafish B—bovine Dg—dog Pg—pig Sc—S. cerevisiae Ce—C. elegans Hr—Horse All—all species expected Species enclosed in parentheses are predicted to react based on 100% homology.