

#9580 Store at -20°C

# ATP2A2/SERCA2 (D51B11) Rabbit mAb



**Orders** ■ 877-616-CELL (2355)  
orders@cellsignal.com  
**Support** ■ 877-678-TECH (8324)  
info@cellsignal.com  
**Web** ■ www.cellsignal.com

rev. 09/28/16

**For Research Use Only. Not For Use In Diagnostic Procedures.**

<b>Applications</b> W Endogenous	<b>Species Cross-Reactivity*</b> H, M, R, Mk	<b>Molecular Wt.</b> 114, 140 kDa	<b>Isotype</b> Rabbit IgG**
--	---	--------------------------------------	--------------------------------

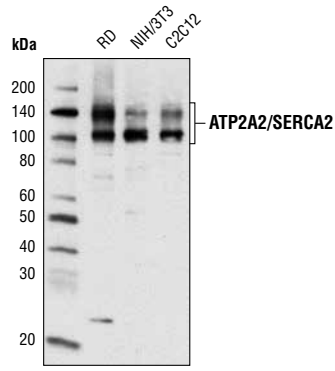
**Background:** The ATP2A2 (SERCA2) calcium pump is one of several sarcoplasmic and endoplasmic reticulum Ca<sup>2+</sup>-ATPases responsible for regulating calcium transport across intracellular membranes (1). Multiple isoforms have been isolated, with ATP2A2a (SERCA2a) found predominantly in the sarcoplasmic reticulum of muscle cells and ATP2A2b (SERCA2b) more ubiquitously expressed in the endoplasmic reticulum of most cell types (2). An isoform containing a truncated carboxy region (ATP2A2c) is expressed in epithelial and hematopoietic cell lines and may be involved in monocyte differentiation (3). Post-translational modification of ATP2A2 (SERCA2), including phosphorylation and tyrosine nitration, modify Ca<sup>2+</sup>-ATPase activity and calcium transport (4,5). Mutation in the corresponding ATP2A2 (SERCA2) gene results in Darier disease, a skin disorder characterized by the presence of dark, keratotic papules or rash found on the head and torso (6).

**Specificity/Sensitivity:** ATP2A2/SERCA2 (D51B11) Rabbit mAb detects endogenous levels of total ATP2A2/SERCA2 protein.

**Source/Purification:** Monoclonal antibody is produced by immunizing animals with a synthetic peptide corresponding to residues near the amino terminus of human ATP2A2/SERCA2 protein.

**Background References:**

- (1) Vangheluwe, P. et al. (2005) *Cell Calcium* 38, 291-302.
- (2) de Smedt, H. et al. (1991) *J Biol Chem* 266, 7092-5.
- (3) Gélébart, P. et al. (2003) *Biochem Biophys Res Commun* 303, 676-84.
- (4) Hawkins, C. et al. (1995) *Mol Cell Biochem* 142, 131-8.
- (5) Viner, R.I. et al. (1999) *Biochem J* 340 ( Pt 3), 657-69.
- (6) Sakuntabhai, A. et al. (1999) *Hum Mol Genet* 8, 1611-9.



Western blot analysis of extracts from various cell types using ATP2A2/SERCA2 (D51B11) Rabbit mAb.

**Entrez-Gene ID** #488  
**Swiss-Prot Acc.** #P16615

**Storage:** Supplied in 10 mM sodium HEPES (pH 7.5), 150 mM NaCl, 100 µg/ml BSA, 50% glycerol and less than 0.02% sodium azide. Store at -20°C. Do not aliquot the antibody.

**\*Species cross-reactivity is determined by western blot.**

**\*\*Anti-rabbit secondary antibodies must be used to detect this antibody.**

**Recommended Antibody Dilutions:**

Western blotting 1:1000

**For product specific protocols and a complete listing of recommended companion products please see the product web page at [www.cellsignal.com](http://www.cellsignal.com)**

**IMPORTANT: For western blots, incubate membrane with diluted antibody in 5% w/v nonfat dry milk, 1X TBS, 0.1% Tween-20 at 4°C with gentle shaking, overnight.**

© 2016 Cell Signaling Technology, Inc. Cell Signaling Technology is a trademark of Cell Signaling Technology, Inc.

**Applications Key:** W—Western IP—Immunoprecipitation IHC—Immunohistochemistry ChIP—Chromatin Immunoprecipitation IF—Immunofluorescence F—Flow cytometry E-P—ELISA-Peptide  
**Species Cross-Reactivity Key:** H—human M—mouse R—rat Hm—hamster Mk—monkey Mi—mink C—chicken Dm—D. melanogaster X—Xenopus Z—zebrafish B—bovine  
 Dg—dog Pg—pig Sc—S. cerevisiae Ce—C. elegans Hr—horse All—all species expected Species enclosed in parentheses are predicted to react based on 100% homology.