

Store at
-20°C

GRB7 (E7R8V) Rabbit mAb



#94475

Support: +1-978-867-2388 (U.S.)
www.cellsignal.com/supportOrders: 877-616-2355 (U.S.)
orders@cellsignal.comEntrez-Gene ID #2886
UniProt ID #Q14451

New 07/19

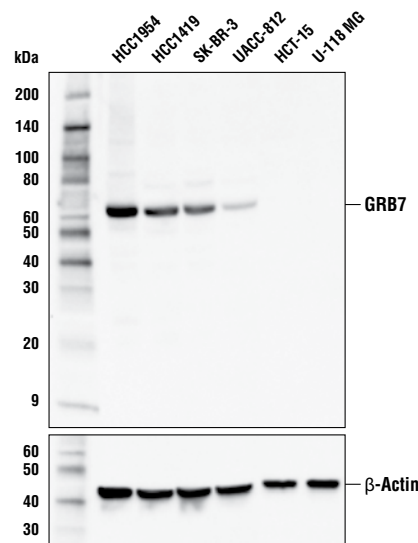
For Research Use Only. Not For Use In Diagnostic Procedures.

Applications W Endogenous	Species Cross-Reactivity* H	Molecular Wt. 62 kDa	Isotype Rabbit IgG**
---------------------------------	--------------------------------	-------------------------	-------------------------

Background: GRB7 belongs to the GRB7 family of adaptor proteins that mediate cell surface and cytosolic tyrosine kinases to downstream signaling pathways (1-3). The C-terminal SH2 domain of GRB7 has been shown to be important for its interaction with various upstream molecules such as ERBB receptor tyrosine kinases, FAK, EphB1, and SHC. The protein has an RA, CAM-BD, and PH domain located at the central region (GM region) of its sequences to mediate downstream Ras, PI3K/Akt, ERK, and Calmodulin signaling (3,4). Overexpression of GRB7 promotes cancer proliferation and migration, and disruption of GRB7 function inhibits its effect on cancer growth, invasion, and metastasis (3-5).

Specificity/Sensitivity: GRB7 (E7R8V) Rabbit mAb recognizes endogenous levels of total GRB7 protein.

Source/Purification: Monoclonal antibody is produced by immunizing animals with a synthetic peptide corresponding to residues surrounding Arg29 of human GRB7 protein.



Western blot analysis of extracts from various cell lines using GRB7 (E7R8V) Rabbit mAb (upper) and β -Actin (D6A8) Rabbit mAb #8457 (lower).

Storage: Supplied in 10 mM sodium HEPES (pH 7.5), 150 mM NaCl, 100 μ g/ml BSA, 50% glycerol and less than 0.02% sodium azide. Store at -20°C . Do not aliquot the antibody.

*Species cross-reactivity is determined by western blot.

**Anti-rabbit secondary antibodies must be used to detect this antibody.

Recommended Antibody Dilutions:

Western blotting 1:1000

For product specific protocols and a complete listing of recommended companion products please see the product web page at www.cellsignal.com.

Background References:

- (1) Han, D.C. et al. (2001) *Oncogene* 20, 6315-21.
- (2) Shen, T.L. and Guan, J.L. (2004) *Front Biosci* 9, 192-200.
- (3) Chu, P.Y. et al. (2019) *Cells* 8, pii: E435. doi: 10.3390/cells8050435.
- (4) Villalobo, A. et al. (2013) *J Pharm Pharm Sci* 16, 177-89.
- (5) Watson, G.M. et al. (2017) *Front Mol Biosci* 4, 64.

Tween is a registered trademark of ICI Americas, Inc.

IMPORTANT: For western blots, incubate membrane with diluted antibody in 5% w/v BSA, 1X TBS, 0.1% Tween[®]20 at 4°C with gentle shaking, overnight.

Thank you for your recent purchase. If you would like to provide a review visit cellsignal.com/comments.

www.cellsignal.com

© 2019 Cell Signaling Technology, Inc.

Cell Signaling Technology is a trademark of Cell Signaling Technology, Inc.

Applications: W—Western IP—Immunoprecipitation IHC—Immunohistochemistry ChIP—Chromatin Immunoprecipitation IF—Immunofluorescence F—Flow cytometry E-P—ELISA-Peptide Species Cross-Reactivity: H—human M—mouse R—rat Hm—hamster Mk—monkey Mi—mink C—chicken Dm—D. melanogaster X—Xenopus Z—zebrafish B—bovine Dg—dog Pg—pig Sc—S. cerevisiae Ce—C. elegans Hr—Horse All—all species expected Species enclosed in parentheses are predicted to react based on 100% homology.