

Store at  
-20°C

# CD8 $\beta$ (D7C8H) Rabbit mAb



#94127

New 07/18

Support: +1-978-867-2388 (U.S.)  
www.cellsignal.com/supportOrders: 877-616-2355 (U.S.)  
orders@cellsignal.comEntrez-Gene ID #12526  
UniProt ID #P10300**For Research Use Only. Not For Use In Diagnostic Procedures.**

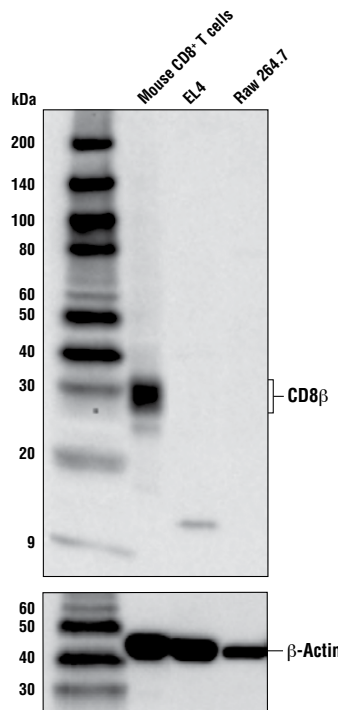
Applications W Endogenous	Species Cross-Reactivity* M	Molecular Wt. 27-32 kDa	Isotype Rabbit IgG**
---------------------------------	--------------------------------	----------------------------	-------------------------

**Background:** Cluster of Differentiation 8 (CD8) is a disulphide-linked heterodimer consisting of the unrelated  $\alpha$  and  $\beta$  subunits. Each subunit is a glycoprotein composed of a single extracellular Ig-like domain, a polypeptide linker, a transmembrane part and a short cytoplasmic tail. On T cells, CD8 is the coreceptor for the T cell receptor (TCR), and these two distinct structures recognize the Antigen-Major Histocompatibility Complex (MHC). Specifically, the Ig-like domain of CD8 $\alpha$  interacts with the  $\alpha 3$ -domain of the MHC class I molecule. CD8 ensures specificity of the TCR-antigen interaction, prolongs the contact between the T cell and the antigen presenting cell, and the  $\alpha$  chain recruits the tyrosine kinase Lck, which is essential for T cell activation (1).

**Background References:**(1) Zamoyska, R. (1994) *Immunity* 1, 243-46.

**Specificity/Sensitivity:** CD8 $\beta$  (D7C8H) Rabbit mAb recognizes endogenous levels of total CD8 $\beta$  protein. This antibody detects an 11 kDa band of unknown origin in some cell lines.

**Source/Purification:** Monoclonal antibody is produced by immunizing animals with mouse CD8 $\beta$  recombinant protein.



Western blot analysis of extracts from mouse CD8 $\beta$  T cells, EL4 cells, and Raw 264.7 cells using CD8 $\beta$  (D7C8H) Rabbit mAb (upper), and  $\beta$ -Actin (D6A8) Rabbit mAb #8457 (lower).

**Storage:** Supplied in 10 mM sodium HEPES (pH 7.5), 150 mM NaCl, 100  $\mu$ g/ml BSA, 50% glycerol and less than 0.02% sodium azide. Store at  $-20^{\circ}\text{C}$ . Do not aliquot the antibody.

\*Species cross-reactivity is determined by western blot.

\*\*Anti-rabbit secondary antibodies must be used to detect this antibody.

**Recommended Antibody Dilutions:**

Western blotting 1:1000

For product specific protocols and a complete listing of recommended companion products please see the product web page at [www.cellsignal.com](http://www.cellsignal.com).

Tween is a registered trademark of ICI Americas, Inc.

**IMPORTANT: For western blots, incubate membrane with diluted antibody in 5% w/v BSA, 1X TBS, 0.1% Tween<sup>®</sup>20 at 4°C with gentle shaking, overnight.**

Thank you for your recent purchase. If you would like to provide a review visit [cellsignal.com/comments](http://cellsignal.com/comments).

[www.cellsignal.com](http://www.cellsignal.com)

© 2018 Cell Signaling Technology, Inc.

Cell Signaling Technology is a trademark of Cell Signaling Technology, Inc.

Applications: W—Western IP—Immunoprecipitation IHC—Immunohistochemistry ChIP—Chromatin Immunoprecipitation IF—Immunofluorescence F—Flow cytometry E-P—ELISA-Peptide Species Cross-Reactivity: H—human M—mouse R—rat Hm—hamster Mk—monkey Mi—mink C—chicken Dm—D. melanogaster X—Xenopus Z—zebrafish B—bovine Dg—dog Pg—pig Sc—S. cerevisiae Ce—C. elegans Hr—Horse All—all species expected Species enclosed in parentheses are predicted to react based on 100% homology.