

Store at
-20°C

C/EBP β Antibody

#90081

Cell Signaling
TECHNOLOGY®Support: +1-978-867-2388 (U.S.)
www.cellsignal.com/supportOrders: 877-616-2355 (U.S.)
orders@cellsignal.comEntrez-Gene ID #1051
UniProt ID #P17676

New 08/19

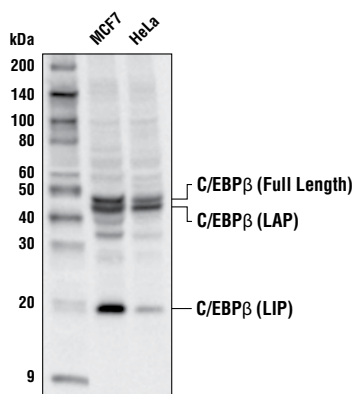
For Research Use Only. Not For Use In Diagnostic Procedures.

Applications W Endogenous	Species Cross-Reactivity* H	Molecular Wt. 20 kDa (LIP), 46 kDa (LAP), 48 kDa (Full Length)	Source Rabbit**
---------------------------------	--------------------------------	--	--------------------

Background: C/EBP β is a member of the transcription factor family of CCAAT/enhancer-binding proteins (C/EBPs) that are critical for cellular differentiation and function (1). There are various N-terminally truncated C/EBP β isoforms: full-length C/EBP β , C/EBP β -LAP (liver-enriched activator protein), and C/EBP β -LIP (liver-enriched inhibitory protein). Aerobic glycolysis in triple-negative breast cancer (TNBC) controls the expression of C/EBP β -LAP. C/EBP β -LAP in turn stimulates the expression of granulocyte colony-stimulating factor (G-CSF) and granulocyte macrophage colony-stimulating factor (GM-CSF). These factors are secreted from the cancer cells to promote myeloid-derived suppressor cell (MDSC) development in the tumor microenvironment, therefore suppressing anti-tumor immunity (2). In addition, research studies showed that decreased C/EBP β -LIP expression delays age-related phenotypes in mice, suggesting an essential role of C/EBP β -LIP in aging (3).

Specificity/Sensitivity: C/EBP β Antibody recognizes endogenous levels of total C/EBP β protein. This antibody does not cross-react with C/EBP α protein.

Source/Purification: Polyclonal antibodies are produced by immunizing animals with a synthetic peptide corresponding to residues near the carboxy terminus of human C/EBP β protein. Antibodies are purified by protein A and peptide affinity chromatography.



Western blot analysis of extracts from MCF7 and HeLa cells using C/EBP β Antibody.

Storage: Supplied in 10 mM sodium HEPES (pH 7.5), 150 mM NaCl, 100 μ g/ml BSA and 50% glycerol. Store at -20°C . Do not aliquot the antibody.

*Species cross-reactivity is determined by western blot.

**Anti-rabbit secondary antibodies must be used to detect this antibody.

Recommended Antibody Dilutions:

Western blotting 1:1000

For product specific protocols and a complete listing of recommended companion products please see the product web page at www.cellsignal.com.

Background References:

- (1) Lekstrom-Himes, J. and Xanthopoulos, K.G. (1998) *J Biol Chem* 273, 28545-8.
- (2) Li, W. et al. (2018) *Cell Metab* 28, 87-103.e6.
- (3) Müller, C. et al. (2018) *Elife* 7 pii: e34985. doi: 10.7554/eLife.34985.

Tween is a registered trademark of ICI Americas, Inc.

IMPORTANT: For western blots, incubate membrane with diluted antibody in 5% w/v BSA, 1X TBS, 0.1% Tween[®]20 at 4°C with gentle shaking, overnight.

Thank you for your recent purchase. If you would like to provide a review visit cellsignal.com/comments.

www.cellsignal.com

© 2019 Cell Signaling Technology, Inc.

Cell Signaling Technology is a trademark of Cell Signaling Technology, Inc.

Applications: W—Western IP—Immunoprecipitation IHC—Immunohistochemistry ChIP—Chromatin Immunoprecipitation IF—Immunofluorescence F—Flow cytometry E-P—ELISA-Peptide Species Cross-Reactivity: H—human M—mouse R—rat Hm—hamster Mk—monkey Mi—mink C—chicken Dm—D. melanogaster X—Xenopus Z—zebrafish B—bovine Dg—dog Pg—pig Sc—S. cerevisiae Ce—C. elegans Hr—Horse All—all species expected Species enclosed in parentheses are predicted to react based on 100% homology.