

GAPDH (D16H11) XP[®] Rabbit mAb (HRP Conjugate)



Orders ■ 877-616-CELL (2355)
orders@cellsignal.com

Support ■ 877-678-TECH (8324)
info@cellsignal.com

Web ■ www.cellsignal.com

rev. 03/08/16

For Research Use Only. Not For Use In Diagnostic Procedures.

Applications W Endogenous	Species Cross-Reactivity* H, M, R, Mk	Molecular Wt. 37 kDa	Isotype Rabbit IgG
---------------------------------	--	-------------------------	-----------------------

Description: This Cell Signaling Technology[®] antibody is conjugated to the carbohydrate groups of horseradish peroxidase (HRP) via its amine groups. The HRP conjugated antibody is expected to exhibit the same species cross-reactivity as the unconjugated GAPDH (D16H11) XP[®] Rabbit mAb #5174.

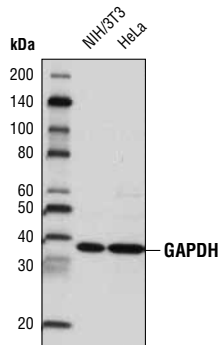
Background: Glyceraldehyde-3-phosphate dehydrogenase (GAPDH) catalyzes the phosphorylation of glyceraldehyde-3-phosphate during glycolysis. Though differentially expressed from tissue to tissue (1), GAPDH is thought to be a constitutively expressed housekeeping protein. For this reason, GAPDH mRNA and protein levels are often measured as controls in experiments quantifying specific changes in expression of other targets. Recent work has elucidated roles for GAPDH in apoptosis (2), gene expression (3), and nuclear transport (4). GAPDH may also play a role in neurodegenerative pathologies such as Huntington and Alzheimer's diseases (4,5).

Specificity/Sensitivity: GAPDH (D16H11) XP[®] Rabbit mAb (HRP Conjugate) detects endogenous levels of total GAPDH protein.

Source/Purification: Monoclonal antibody is produced by immunizing animals with a synthetic peptide corresponding to residues near the carboxy terminus of human GAPDH protein.

Background References:

- (1) Barber, R.D. et al. (2005) *Physiol. Genomics* 21, 389-95.
- (2) Hara, M.R. and Snyder, S.H. (2006) *Cell Mol. Neurobiol.* 26, 527-38.
- (3) Zheng, L. et al. (2003) *Cell* 114, 255-66.
- (4) Bae, B.I. et al. (2006) *Proc. Natl. Acad. Sci. USA* 103, 3405-9.
- (5) Wang, Q. et al. (2005) *FASEB J.* 19, 869-71.



Western blot analysis of extracts from NIH/3T3 and HeLa cells using GAPDH (D16H11) XP[®] Rabbit mAb (HRP Conjugate).

Entrez-Gene ID #2597
Swiss-Prot Acc. #P04406

Storage: Supplied in 136 mM NaCl, 2.6 mM KCl, 12 mM sodium phosphate (pH 7.4) dibasic, 2 mg/ml BSA and 50% glycerol. Store at -20°C. *Do not aliquot the antibody.*

***Species cross-reactivity other than human and mouse is determined by western blot using the unconjugated antibody.**

HRP-conjugated antibodies do not require incubation with a secondary antibody.

Recommended Antibody Dilutions:

Western blotting 1:1000

For product specific protocols please see the web page for this product at www.cellsignal.com.

Please visit www.cellsignal.com for a complete listing of recommended complementary products.

IMPORTANT: For western blots, incubate membrane with diluted antibody in 5% w/v BSA, 1X TBS, 0.1% Tween-20 at 4°C with gentle shaking, overnight.

Applications Key: W—Western IP—Immunoprecipitation IHC—Immunohistochemistry ChIP—Chromatin Immunoprecipitation IF—Immunofluorescence F—Flow cytometry E-P—ELISA—Peptide
Species Cross-Reactivity Key: H—human M—mouse R—rat Hm—hamster Mk—monkey Mi—mink C—chicken Dm—D. melanogaster X—Xenopus Z—zebrafish B—bovine
 Dg—dog Pg—pig Sc—S. cerevisiae Ce—C. elegans Hr—horse All—all species expected Species enclosed in parentheses are predicted to react based on 100% homology.