

Store at
-20°C

LAIR-1 Antibody

#87923

Support: +1-978-867-2388 (U.S.)
www.cellsignal.com/supportOrders: 877-616-2355 (U.S.)
orders@cellsignal.comEntrez-Gene ID #3903
UniProt ID #Q6GTX8

New 01/19

For Research Use Only. Not For Use In Diagnostic Procedures.**Applications**
W, IP
Endogenous**Species Cross-Reactivity***
H**Molecular Wt.**
40-60 kDa**Source**
Rabbit**

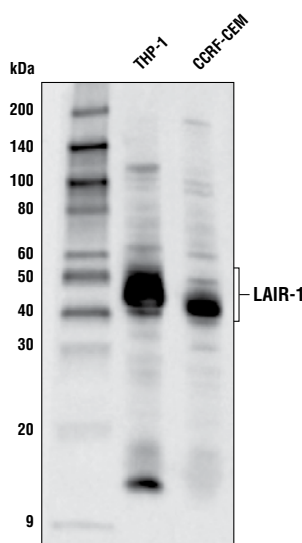
Background: LAIR-1 is an inhibitory receptor that belongs to the Immunoglobulin superfamily. It has one extracellular Ig-like domain and an intracellular C-terminus with two ITIM (immunoreceptor tyrosine-based inhibitory motif) domains. It is found on peripheral mononuclear cells, including NK, T, and B cells, and is thought to play a negative regulatory role on the cytolytic function of these cells through signaling through collagen ligation (1). LAIR-1 has been noted to be upregulated in renal cell carcinoma (2), and may play a role in expansion of Th17 cell populations in collagen-rich environments, such as in graft rejection tissue (3).

Background References:

- (1) Meyaard, L. (2008) *J Leukoc Biol* 83, 799-803.
- (2) Jingushi, K. et al. (2019) *Oncol Rep* 41, 1293-303.
- (3) Agashe, V.V. et al. (2018) *J Immunol* 201, 772-81.

Specificity/Sensitivity: LAIR-1 Antibody recognizes endogenous levels of total LAIR-1 protein.

Source/Purification: Polyclonal antibodies are produced by immunizing animals with a synthetic peptide corresponding to residues near the carboxyterminus of human LAIR-1 protein. Antibodies are purified by protein A and peptide affinity chromatography.



Western blot analysis of extracts from THP-1 and CCRF-CEM cells using LAIR-1 Antibody.

Storage: Supplied in 10 mM sodium HEPES (pH 7.5), 150 mM NaCl, 100 µg/ml BSA and 50% glycerol. Store at -20°C. *Do not aliquot the antibody.*

*Species cross-reactivity is determined by western blot.

**Anti-rabbit secondary antibodies must be used to detect this antibody.

Recommended Antibody Dilutions:

Western blotting	1:1000
Immunoprecipitation	1:100

For product specific protocols and a complete listing of recommended companion products please see the product web page at www.cellsignal.com.

Tween is a registered trademark of ICI Americas, Inc.

IMPORTANT: For western blots, incubate membrane with diluted antibody in 5% w/v nonfat dry milk, 1X TBS, 0.1% Tween®20 at 4°C with gentle shaking, overnight.

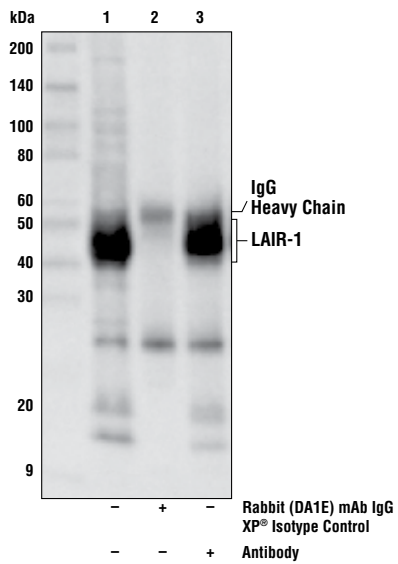
Thank you for your recent purchase. If you would like to provide a review visit cellsignal.com/comments.

www.cellsignal.com

© 2019 Cell Signaling Technology, Inc.

Cell Signaling Technology is a trademark of Cell Signaling Technology, Inc.

Applications: W—Western IP—Immunoprecipitation IHC—Immunohistochemistry ChIP—Chromatin Immunoprecipitation IF—Immunofluorescence F—Flow cytometry E-P—ELISA-Peptide **Species Cross-Reactivity:** H—human M—mouse R—rat Hm—hamster Mk—monkey Mi—mink C—chicken Dm—D. melanogaster X—Xenopus Z—zebrafish B—bovine Dg—dog Pg—pig Sc—S. cerevisiae Ce—C. elegans Hr—Horse All—all species expected **Species** enclosed in parentheses are predicted to react based on 100% homology.



Immunoprecipitation of LAIR-1 from THP-1 cell extracts. Lane 1 is 10% input, lane 2 is Normal Rabbit IgG #2729, and lane 3 is LAIR-1 Antibody. Western blot analysis was performed using LAIR-1 Antibody. Anti-rabbit IgG, HRP-linked Antibody #7074 was used as secondary antibody.

Thank you for your recent purchase. If you would like to provide a review visit [cellsignal.com/comments](https://www.cellsignal.com/comments).

www.cellsignal.com