

Store at
4°C

#86387

Bcl-xL (54H6) Rabbit mAb (Alexa Fluor® 647 Conjugate)



Support: +1-978-867-2388 (U.S.)
www.cellsignal.com/support

Orders: 877-616-2355 (U.S.)
orders@cellsignal.com

Entrez-Gene ID #598
UniProt ID #Q07817

rev. 11/02/17

For Research Use Only. Not For Use In Diagnostic Procedures.

Applications
F
Endogenous

Species Cross-Reactivity*
H, M, R, Mk

Isotype
Rabbit IgG

Description: This Cell Signaling Technology antibody is conjugated to Alexa Fluor® 647 fluorescent dye and tested in-house for direct flow cytometry analysis in human cells. The antibody is expected to exhibit the same species cross-reactivity as the unconjugated Bcl-xL (54H6) Rabbit mAb #2764.

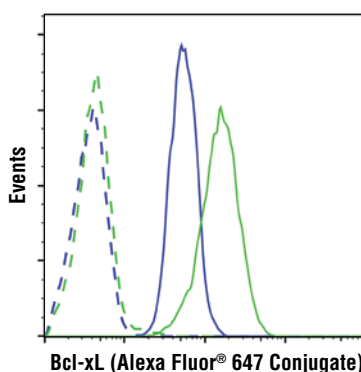
Background: Bcl-xL prevents apoptosis through two different mechanisms: heterodimerization with an apoptotic protein inhibits its apoptotic effect (1,2) and formation of mitochondrial outer membrane pores help maintain a normal membrane state under stressful conditions (3). Bcl-xL is phosphorylated by JNK following treatment with microtubule-damaging agents such as paclitaxel, vinblastine and nocodazole (4,5).

Specificity/Sensitivity: Bcl-xL (54H6) Rabbit mAb (Alexa Fluor® 647 Conjugate) detects endogenous levels of total Bcl-xL protein. The antibody does not cross-react with other Bcl-2 family members.

Source/Purification: Monoclonal antibody is produced by immunizing animals with a synthetic peptide corresponding to residues surrounding Asp61 of human Bcl-xL.

Background References:

- (1) Adams, J.M. and Cory, S. (1998) *Science* 281, 1322-6.
- (2) Minn, A.J. et al. (1999) *EMBO J* 18, 632-43.
- (3) Vander Heiden, M.G. et al. (2001) *J Biol Chem* 276, 19414-9.
- (4) Fan, M. et al. (2000) *J Biol Chem* 275, 29980-5.
- (5) Poruchynsky, M.S. et al. (1998) *Cancer Res* 58, 3331-8.



Flow cytometric analysis of THP-1 cells (blue) and K562 cells (green) using Bcl-xL (54H6) Rabbit mAb (Alexa Fluor® 647 Conjugate) (solid lines) or concentration-matched Rabbit (DA1E) mAb IgG XP® Isotype Control (PE Conjugate) #5742 (dashed lines).

Storage: Supplied in PBS (pH 7.2), less than 0.1% sodium azide and 2 mg/ml BSA. Store at 4°C. Do not aliquot the antibody. Protect from light. Do not freeze.

*Species cross-reactivity is determined by western blot using the unconjugated antibody.

Recommended Antibody Dilutions:

Flow Cytometry 1:50

For product specific protocols and a complete listing of recommended companion products please see the product web page at www.cellsignal.com

U. S. Patent No. 5,675,063.

Alexa Fluor is a registered trademark of Life Technologies Corporation.

Thank you for your recent purchase. If you would like to provide a review visit cellsignal.com/comments.

www.cellsignal.com

© 2016 Cell Signaling Technology, Inc.

Cell Signaling Technology is a trademark of Cell Signaling Technology, Inc.

Applications: W—Western IP—Immunoprecipitation IHC—Immunohistochemistry ChIP—Chromatin Immunoprecipitation IF—Immunofluorescence F—Flow cytometry E-P—ELISA-Peptide Species Cross-Reactivity: H—human M—mouse R—rat Hm—hamster Mk—monkey Mi—mink C—chicken Dm—D. melanogaster X—Xenopus Z—zebrafish B—bovine Dg—dog Pg—pig Sc—S. cerevisiae Ce—C. elegans Hr—Horse All—all species expected Species enclosed in parentheses are predicted to react based on 100% homology.