

MKK6 (D31D1) Rabbit mAb



Orders ■ 877-616-CELL (2355)
orders@cellsignal.com
Support ■ 877-678-TECH (8324)
info@cellsignal.com
Web ■ www.cellsignal.com

rev. 03/04/16

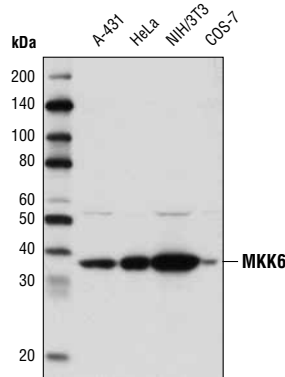
For Research Use Only. Not For Use In Diagnostic Procedures.

Applications W, IP Endogenous	Species Cross-Reactivity* H, M, R, Mk	Molecular Wt. 38 kDa	Isotype Rabbit IgG**
-------------------------------------	--	-------------------------	-------------------------

Background: MKK3 and MKK6 are two closely related dual-specificity protein kinases that activate p38 MAP kinase (1-5). MKK3 and MKK6 both phosphorylate and activate p38 MAP kinase at its activation site, Thr-Gly-Tyr, but do not phosphorylate or activate Erk1/2 or SAPK/JNK. Phosphorylation of p38 MAP kinase dramatically stimulates its ability to phosphorylate protein substrates such as ATF-2 and Elk-1. MKK3 and MKK6 are both activated by different forms of cellular stress and inflammatory cytokines (4,5). Activation of MKK3 and MKK6 occurs through phosphorylation at Ser189 and Thr193 on MKK3 (2) and Ser207 and Thr211 on MKK6 (4,5).

Specificity/Sensitivity: MKK6 (D31D1) Rabbit mAb recognizes endogenous levels of total MKK6 protein. This antibody does not cross-react with MKK3 or other members of the MKK family.

Source/Purification: Monoclonal antibody is produced by immunizing animals with recombinant, full-length MKK6 expressed in *E. coli*.



Western blot analysis of extracts from various cell lines using MKK6 (D31D1) Rabbit mAb.

Entrez-Gene ID #5608
Swiss-Prot Acc. #P52564

Storage: Supplied in 10 mM sodium HEPES (pH 7.5), 150 mM NaCl, 100 µg/ml BSA, 50% glycerol and less than 0.02% sodium azide. Store at -20°C. Do not aliquot the antibody.

***Species cross-reactivity is determined by western blot.**

****Anti-rabbit secondary antibodies must be used to detect this antibody.**

Recommended Antibody Dilutions:

Western blotting	1:1000
Immunoprecipitation	1:200

For product specific protocols please see the web page for this product at www.cellsignal.com.

Please visit www.cellsignal.com for a complete listing of recommended complementary products.

Background References:

- (1) Derijard, B. et al. (1995) *Science* 267, 682-685.
- (2) Raingeaud, J. et al. (1995) *J. Biol. Chem.* 270, 7420-7426.
- (3) Sluss, H.K. et al. (1994) *Mol. Cell. Biol.* 14, 8376-8384.
- (4) Raingeaud, J. et al. (1996) *Mol. Cell. Biol.* 16(3), 1247-1255.
- (5) Han, J. et al. (1996) *J. Biol. Chem.* 271, 2886-2891.

IMPORTANT: For western blots, incubate membrane with diluted antibody in 5% w/v BSA, 1X TBS, 0.1% Tween-20 at 4°C with gentle shaking, overnight.

Applications Key: W—Western IP—Immunoprecipitation IHC—Immunohistochemistry ChIP—Chromatin Immunoprecipitation IF—Immunofluorescence F—Flow cytometry E-P—ELISA-Peptide
Species Cross-Reactivity Key: H—human M—mouse R—rat Hm—hamster Mk—monkey Mi—mink C—chicken Dm—D. melanogaster X—Xenopus Z—zebrafish B—bovine
Dg—dog Pg—pig Sc—S. cerevisiae Ce—C. elegans Hr—horse All—all species expected Species enclosed in parentheses are predicted to react based on 100% homology.