

# EGF Receptor (D38B1) XP<sup>®</sup> Rabbit mAb (HRP Conjugate)



**Orders** ■ 877-616-CELL (2355)  
orders@cellsignal.com

**Support** ■ 877-678-TECH (8324)  
info@cellsignal.com

**Web** ■ www.cellsignal.com

rev. 03/03/16

**For Research Use Only. Not For Use In Diagnostic Procedures.**

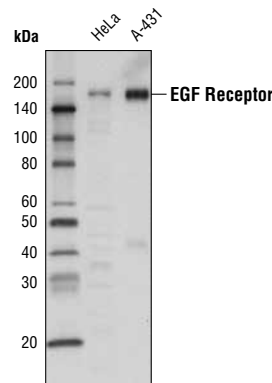
Applications W Endogenous	Species Cross-Reactivity* H, M, Mk	Molecular Wt. 175 kDa	Isotype Rabbit IgG
---------------------------------	---------------------------------------	--------------------------	-----------------------

**Description:** This Cell Signaling Technology<sup>®</sup> antibody is conjugated to the carbohydrate groups of horseradish peroxidase (HRP) via its amine groups. The HRP conjugated antibody is expected to exhibit the same species cross-reactivity as the unconjugated EGF Receptor (D38B1) XP<sup>®</sup> Rabbit mAb #4267.

**Background:** The epidermal growth factor (EGF) receptor is a transmembrane tyrosine kinase that belongs to the HER/ErbB protein family. Ligand binding results in receptor dimerization, autophosphorylation, activation of downstream signaling, internalization, and lysosomal degradation (1,2). Phosphorylation of EGF receptor (EGFR) at Tyr845 in the kinase domain is implicated in stabilizing the activation loop, maintaining the active state enzyme, and providing a binding surface for substrate proteins (3,4). c-Src is involved in phosphorylation of EGFR at Tyr845 (5). The SH2 domain of PLC $\gamma$  binds at phospho-Tyr992, resulting in activation of PLC $\gamma$ -mediated downstream signaling (6). Phosphorylation of EGFR at Tyr1045 creates a major docking site for the adaptor protein c-Cbl, leading to receptor ubiquitination and degradation following EGFR activation (7,8). The GRB2 adaptor protein binds activated EGFR at phospho-Tyr1068 (9). A pair of phosphorylated EGFR residues (Tyr1148 and Tyr1173) provide a docking site for the Shc scaffold protein, with both sites involved in MAP kinase signaling activation (2). Phosphorylation of EGFR at specific serine and threonine residues attenuates EGFR kinase activity. EGFR carboxy-terminal residues Ser1046 and Ser1047 are phosphorylated by CaM kinase II; mutation of either of these serines results in upregulated EGFR tyrosine autophosphorylation (10).

**Specificity/Sensitivity:** EGF Receptor (D38B1) XP<sup>®</sup> Rabbit mAb (HRP Conjugate) detects endogenous levels of total EGF receptor protein. The antibody does not cross-react with other proteins of the ErbB family.

**Source/Purification:** Monoclonal antibody is produced by immunizing animals with a fusion protein containing the cytoplasmic domain of human EGF receptor.



Western blot analysis of extracts from HeLa and A-431 cells using EGF Receptor (D38B1) XP<sup>®</sup> Rabbit mAb (HRP Conjugate).

**Entrez-Gene ID** #1956  
**Swiss-Prot Acc.** #P00533

**Storage:** Supplied in 136 mM NaCl, 2.6 mM KCl, 12 mM sodium phosphate (pH 7.4) dibasic, 2 mg/ml BSA and 50% glycerol. Store at -20°C. Do not aliquot the antibody.

**\*Species cross-reactivity other than human is determined by western blot using the unconjugated antibody.**

**Recommended Antibody Dilutions:**

Western blotting 1:1000

**For product specific protocols please see the web page for this product at [www.cellsignal.com](http://www.cellsignal.com).**

**Please visit [www.cellsignal.com](http://www.cellsignal.com) for a complete listing of recommended complementary products.**

**Background References:**

- (1) Hackel, P.O. et al. (1999) *Curr Opin Cell Biol* 11, 184-9.
- (2) Zwick, E. et al. (1999) *Trends Pharmacol Sci* 20, 408-12.
- (3) Cooper, J.A. and Howell, B. (1993) *Cell* 73, 1051-4.
- (4) Hubbard, S.R. et al. (1994) *Nature* 372, 746-54.
- (5) Biscardi, J.S. et al. (1999) *J Biol Chem* 274, 8335-43.
- (6) Emlet, D.R. et al. (1997) *J Biol Chem* 272, 4079-86.
- (7) Levkowitz, G. et al. (1999) *Mol Cell* 4, 1029-40.
- (8) Ettenberg, S.A. et al. (1999) *Oncogene* 18, 1855-66.
- (9) Rojas, M. et al. (1996) *J Biol Chem* 271, 27456-61.
- (10) Feinmesser, R.L. et al. (1999) *J Biol Chem* 274, 16168-73.

**IMPORTANT: For western blots, incubate membrane with diluted antibody in 5% w/v BSA, 1X TBS, 0.1% Tween-20 at 4°C with gentle shaking, overnight.**

**Applications Key:** W—Western IP—Immunoprecipitation IHC—Immunohistochemistry ChIP—Chromatin Immunoprecipitation IF—Immunofluorescence F—Flow cytometry E-P—ELISA—Peptide  
**Species Cross-Reactivity Key:** H—human M—mouse R—rat Hm—hamster Mk—monkey Mi—mink C—chicken Dm—D. melanogaster X—Xenopus Z—zebrafish B—bovine  
 Dg—dog Pg—pig Sc—S. cerevisiae Ce—C. elegans Hr—horse All—all species expected Species enclosed in parentheses are predicted to react based on 100% homology.