

#8476 Store at -20°C

# S-Tag Antibody



**Orders** ■ 877-616-CELL (2355)  
orders@cellsignal.com  
**Support** ■ 877-678-TECH (8324)  
info@cellsignal.com  
**Web** ■ www.cellsignal.com

rev. 03/03/16

**For Research Use Only. Not For Use In Diagnostic Procedures.**

<b>Applications</b> W Transfected	<b>Species Cross-Reactivity*</b> All	<b>Source</b> Rabbit**
---	---	---------------------------

**Background:** Epitope tags are useful for the labeling and detection of proteins using immunoblotting, immunoprecipitation, and immunostaining techniques. Because of their small size, they are unlikely to affect the tagged protein's biochemical properties.

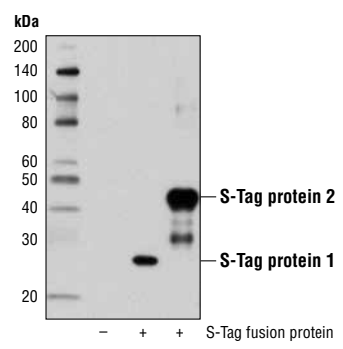
S-tag is an epitope tag composed of a 15 residue peptide and together with S-protein, comprises pancreatic ribonuclease S (1).

**Specificity/Sensitivity:** S-Tag Antibody recognizes transfected levels of total S-Tag protein.

**Source/Purification:** Polyclonal antibodies are produced by immunizing animals with a synthetic S-Tag peptide. Antibodies are purified by protein A and peptide affinity chromatography.

**Background References:**

(1) Raines, R.T. et al. (2000) *Methods Enzymol* 326, 362-76.



Western blot analysis of extracts from untransfected cells and transfected cells overexpressing either S-Tag fusion protein 1 or S-Tag fusion protein 2 using S-Tag Antibody.

**Storage:** Supplied in 10 mM sodium HEPES (pH 7.5), 150 mM NaCl, 100 µg/ml BSA and 50% glycerol. Store at -20°C. Do not aliquot the antibody.

**\*Species cross-reactivity is determined by western blot.**

**\*\*Anti-rabbit secondary antibodies must be used to detect this antibody.**

**Recommended Antibody Dilutions:**

Western blotting 1:1000

**For application specific protocols please see the web page for this product at [www.cellsignal.com](http://www.cellsignal.com).**

**Please visit [www.cellsignal.com](http://www.cellsignal.com) for a complete listing of recommended companion products.**

**IMPORTANT: For western blots, incubate membrane with diluted antibody in 5% w/v BSA, 1X TBS, 0.1% Tween-20 at 4°C with gentle shaking, overnight.**

© 2011 Cell Signaling Technology, Inc. Cell Signaling Technology® is a trademark of Cell Signaling Technology, Inc.

**Applications Key:** W—Western IP—Immunoprecipitation IHC—Immunohistochemistry ChIP—Chromatin Immunoprecipitation IF—Immunofluorescence F—Flow cytometry E-P—ELISA-Peptide  
**Species Cross-Reactivity Key:** H—human M—mouse R—rat Hm—hamster Mk—monkey Mi—mink C—chicken Dm—D. melanogaster X—Xenopus Z—zebrafish B—bovine  
 Dg—dog Pg—pig Sc—S. cerevisiae Ce—C. elegans Hr—horse All—all species expected Species enclosed in parentheses are predicted to react based on 100% homology.