

Store at
4°C

NY-ESO-1 (D1Q2U) Rabbit mAb (Alexa Fluor® 488 Conjugate)

#83329



Cell Signaling
TECHNOLOGY®

Support: +1-978-867-2388 (U.S.)
www.cellsignal.com/support

Orders: 877-616-2355 (U.S.)
orders@cellsignal.com

Entrez-Gene ID #1485
UniProt ID #P78358

New 02/18

For Research Use Only. Not For Use In Diagnostic Procedures.

Applications
F
Endogenous

Species Cross-Reactivity
H

Isotype
Rabbit IgG

Description: This Cell Signaling Technology antibody is conjugated to Alexa Fluor® 488 fluorescent dye and tested in-house for direct flow cytometric analysis in human cells. This antibody is expected to exhibit the same species cross-reactivity as the unconjugated NY-ESO-1 (D1Q2U) Rabbit mAb #45437.

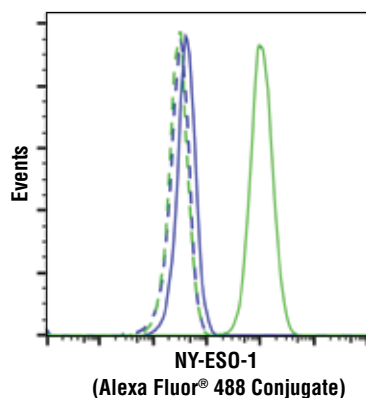
Background: Cancer/testis antigens (CTAs) are a family of more than 100 proteins whose normal expression is largely restricted to immune privileged germ cells of the testis, ovary, and trophoblast cells of the placenta. Although most normal somatic tissues are void of CTA expression, due to epigenetic silencing of gene expression, their expression is upregulated in a wide variety of human solid and liquid tumors (1,2). As such, CTAs have garnered much attention as attractive targets for a variety of immunotherapy-based approaches to selectively attack tumors (3).

Background References:

- (1) Caballero, O.L. and Chen, Y.T. (2009) *Cancer Sci* 100, 2014-21.
- (2) De Smet, C. et al. (1999) *Mol Cell Biol* 19, 7327-35.
- (3) Gjerstorff, M.F. et al. (2015) *Oncotarget* 6, 15772-87.

Specificity/Sensitivity: NY-ESO-1 (D1Q2U) Rabbit mAb (Alexa Fluor® 488 Conjugate) recognizes endogenous levels of total NY-ESO-1 protein. This antibody cross-reacts with NY-ESO-2/LAGE-1S.

Source/Purification: Monoclonal antibody is produced by immunizing animals with a synthetic peptide corresponding to residues near the carboxy terminus of human NY-ESO-1 protein, isoform 1.



Flow cytometric analysis of Jurkat cells (blue) and U266 cells (green) using NY-ESO-1 (D1Q2U) Rabbit mAb (Alexa Fluor® 488 Conjugate) (solid lines) or a Rabbit (DA1E) mAb IgG XP® Isotype Control (Alexa Fluor® 488 Conjugate) #2975 (dashed lines).

Storage: Supplied in PBS (pH 7.2), less than 0.1% sodium azide and 2 mg/ml BSA. Store at 4°C. Do not aliquot the antibody. Protect from light. Do not freeze.

Recommended Antibody Dilutions:

Flow Cytometry 1:50

For product specific protocols and a complete listing of recommended companion products please see the product web page at www.cellsignal.com.

This product is provided under an intellectual property license from Life Technologies Corporation. The transfer of this product is contingent on the buyer using the purchased product solely in research, including use with HCS or other automated imaging applications but excluding use in combination with DNA microarrays. The buyer must not sell or otherwise transfer this product or its components for (a) diagnostic, therapeutic or prophylactic purposes; (b) testing, analysis or screening services, or information in return for compensation on a per-test basis; (c) manufacturing or quality assurance or quality control, or (d) resale, whether or not resold for use in research. For information on purchasing a license to this product for purposes other than as described above, contact Life Technologies Corporation, 5791 Van Allen Way, Carlsbad, CA 92008 USA or outlicensing@lifetech.com.

Alexa Fluor is a registered trademark of Life Technologies Corporation.

Thank you for your recent purchase. If you would like to provide a review visit cellsignal.com/comments.

www.cellsignal.com

© 2018 Cell Signaling Technology, Inc.

XP and Cell Signaling Technology are trademarks of Cell Signaling Technology, Inc.

Applications: W—Western IP—Immunoprecipitation IHC—Immunohistochemistry ChIP—Chromatin Immunoprecipitation IF—Immunofluorescence F—Flow cytometry E-P—ELISA-Peptide Species Cross-Reactivity: H—human M—mouse R—rat Hm—hamster Mk—monkey Mi—mink C—chicken Dm—D. melanogaster X—Xenopus Z—zebrafish B—bovine Dg—dog Pg—pig Sc—S. cerevisiae Ce—C. elegans Hr—Horse All—all species expected Species enclosed in parentheses are predicted to react based on 100% homology.