

SignalStain® Boost IHC Detection Reagent (HRP, Rabbit)

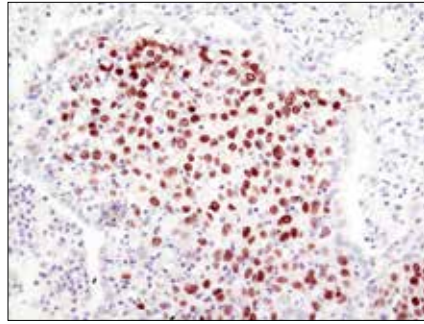
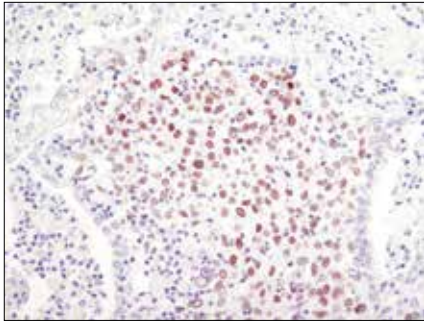
- 1 ml
(10 slides)
- 15 ml
(150 slides)



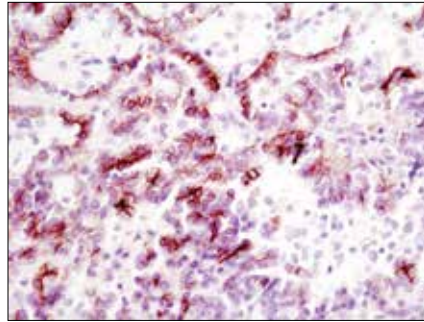
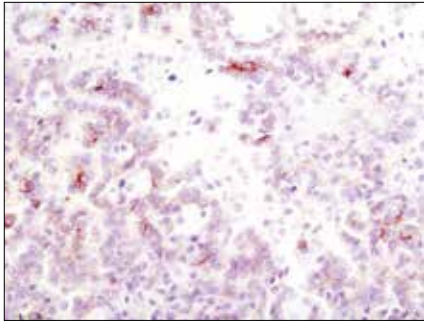
- Orders** ■ 877-616-CELL (2355)
orders@cellsignal.com
- Support** ■ 877-678-TECH (8324)
info@cellsignal.com
- Web** ■ www.cellsignal.com

rev. 02/29/16

For Research Use Only. Not For Use In Diagnostic Procedures.



Immunohistochemical analysis of paraffin-embedded human lung squamous cell carcinoma using Sox2 (D6D9) XP® Rabbit mAb #3579 with biotin-based detection (left) or SignalStain® Boost IHC Detection Reagent (HRP, Rabbit) (right).



Immunohistochemical analysis of paraffin-embedded human papillary renal cell carcinoma using Phospho-Met (Tyr1234/1235) (D26) XP® Rabbit mAb #3077 with biotin-based detection (left) or SignalStain® Boost IHC Detection Reagent (HRP, Rabbit) (right).

Description: SignalStain® Boost IHC Detection Reagent (HRP, Rabbit) is a ready-to-use solution intended for use in immunohistochemical assays to detect rabbit primary antibodies.

SignalStain® Boost IHC Detection Reagent (HRP, Rabbit) is a highly sensitive, one-step, polymer-based detection reagent that is specific for rabbit IgG. It can be used to visualize targets in both paraffin-embedded and frozen tissue sections and it is compatible with all peroxidase-based substrates.

Specificity/Sensitivity: SignalStain® Boost IHC Detection Reagent (HRP, Rabbit) can be used to detect rabbit primary antibodies in immunohistochemical assays. Some antibodies may require titration when used with this highly sensitive reagent.

Directions for Use: Equilibrate SignalStain® Boost IHC Detection Reagent (HRP, Rabbit) to room temperature prior to applying to the slides. Cover sections with 1-3 drops (40-120 µl), as needed, and incubate in a humidified chamber for 30 minutes at room temperature. Wash slides and develop with any peroxidase-based substrate.

Storage: SignalStain® Boost IHC Detection Reagent (HRP, Rabbit) should be stored at 4°C and is stable for 12 months.