

SignalStain® Antibody Diluent



Small 25 ml

Large 100 ml

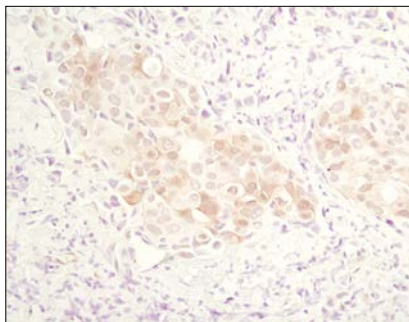
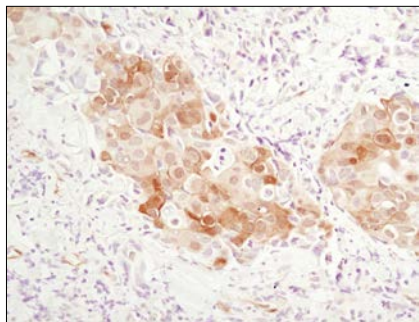
Orders ■ 877-616-CELL (2355)
orders@cellsignal.com

Support ■ 877-678-TECH (8324)
info@cellsignal.com

Web ■ www.cellsignal.com

rev. 11/09/17

For Research Use Only. Not For Use In Diagnostic Procedures.



Immunohistochemical analysis of paraffin-embedded human breast carcinoma comparing SignalStain® Antibody Diluent (left) to TBST/normal goat serum (right) using Phospho-Akt (Ser473) (D9E) Rabbit mAb #4060.

Description: SignalStain® Antibody Diluent is for use in immunohistochemical assays. It yields superior staining with a number of antibodies. This diluent can improve IHC signal and background; however, it is not compatible with all of Cell Signaling Technology's products that are recommended for use in immunohistochemical assays. Please consult the antibody datasheet to determine if SignalStain® Antibody Diluent is recommended for your product of interest.

Directions for Use: Use as a primary antibody diluent in immunohistochemical assays. Dilute primary antibody in SignalStain® Antibody Diluent as directed on the antibody datasheet.

Storage: SignalStain® Antibody Diluent is supplied as a working solution. This product is stable for 12 months when stored at 4°C.

Please visit www.cellsignal.com for a complete listing of recommended companion products.