

PathScan® Total Akt3 Sandwich ELISA Kit (Mouse Preferred)



Orders ■ 877-616-CELL (2355)
orders@cellsignal.com
Support ■ 877-678-TECH (8324)
info@cellsignal.com
Web ■ www.cellsignal.com

✓ 1 Kit
(96 assays)

rev. 02/25/16

For Research Use Only. Not For Use In Diagnostic Procedures.

Entrez-Gene ID #10000
UniProt ID #Q9Y243

Species Cross-Reactivity: M

Description: The PathScan® Total Akt3 Sandwich ELISA Kit is a solid phase sandwich enzyme-linked immunosorbent assay (ELISA) that detects endogenous levels of Akt3 protein. An Akt rabbit mAb has been coated onto the microwells. After incubation with cell lysates, Akt protein is captured by the coated antibody. Following extensive washing, an Akt3 mouse mAb is added to detect captured Akt3 protein. Anti-mouse IgG, HRP-linked Antibody is then used to recognize the bound detection antibody. HRP substrate TMB is added to develop color. The magnitude of the absorbance for this developed color is proportional to the quantity of Akt3 protein.

Specificity/Sensitivity: PathScan® Total Akt3 Sandwich ELISA Kit (Mouse Preferred) detects endogenous levels of Akt3 protein in mouse cells, as shown in Figure 1. Akt3 kit specificity is demonstrated in Figure 2, while the kit sensitivity is shown in Figure 3.

Products Included	Volume	Color
Akt Rabbit mAb Coated Microwells*	96 tests	
Akt3 Mouse Detection mAb	1 each	Green (Lyophilized)
Anti-Mouse IgG HRP-linked Antibody	1 each	Red (Lyophilized)
Detection Antibody Diluent 2	11 ml	Green
HRP Diluent	11 ml	Red
TMB Substrate #7004	11 ml	Colorless
STOP Solution #7002	11 ml	Colorless
Sealing Tape	2 sheets	
20X ELISA Wash Buffer	25 ml	Colorless
ELISA Sample Diluent	25 ml	Blue
10X Cell Lysis Buffer #9803**	15 ml	Yellowish

* 12 8-well modules -Each module is designed to break apart for 8 tests.
**Kit should be stored at 4°C with the exception of 10X Cell Lysis Buffer, which is stored at -20°C (packaged separately).

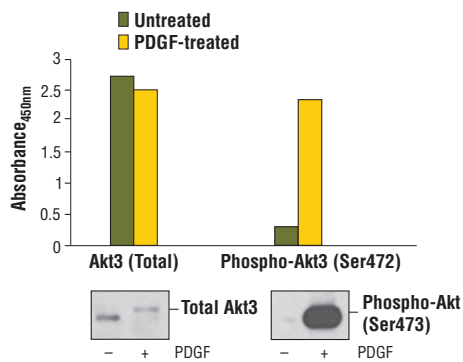


Figure 1: Treatment of NIH/3T3 cells with PDGF stimulates phosphorylation of Akt3 at Ser472, detected by PathScan® Phospho-Akt3 (Ser472) Sandwich ELISA Kit (Mouse Preferred) #7942, but does not affect levels of total Akt3 protein detected by PathScan® Total Akt3 Sandwich ELISA Kit (Mouse Preferred) #7934. The absorbance readings at 450 nm are shown in the top figure, while the corresponding western blots using Akt3 (62A8) Rabbit mAb #3788 (left panel) and Phospho-Akt (Ser473) (193H12) Rabbit mAb #4058 (right panel) are shown in the bottom figure.

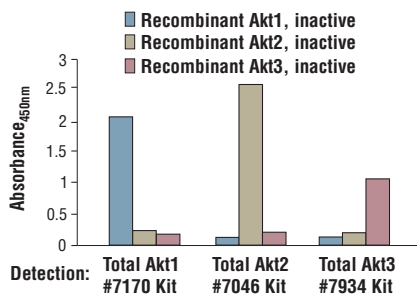


Figure 2: Demonstration of total protein sandwich ELISA kit specificity using recombinant human Akt1, Akt2 and Akt3 proteins. Total Akt1 is detected by PathScan® Total Akt1 Sandwich ELISA Kit #7170, total Akt2 is detected by PathScan® Total Akt2 Sandwich ELISA Kit #7046 while PathScan® Total Akt3 Sandwich ELISA Kit (Mouse Preferred) #7934 measures levels of Akt3. Recombinant, inactive Akt protein (1.0 ng/microwell) is assayed using each ELISA kit.

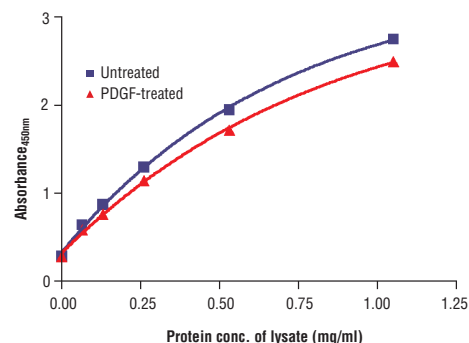


Figure 3: The relationship between protein concentration of lysates from untreated and PDGF-treated NIH/3T3 cells and the absorbance at 450 nm is shown. After starvation, NIH/3T3 cells (85% confluence) were treated with PDGF (50 ng/ml) for 10 min at 37°C and then lysed.

Background: Akt, also referred to as PKB or Rac, plays a critical role in controlling survival and apoptosis (1-3). This protein kinase is activated by insulin and various growth and survival factors to function in a wortmannin-sensitive pathway involving PI3 kinase (2,3). Akt is activated by phospholipid binding and activation loop phosphorylation at Thr308 by PDK1 (4) and by phosphorylation within the carboxy terminus at Ser473. The previously elusive PDK2 responsible for phosphorylation of Akt at Ser473 has been identified as mammalian target of rapamycin (mTOR) in a rapamycin-insensitive complex with rictor and Sin1 (5,6). Akt promotes cell survival by inhibiting apoptosis through phosphorylation and inactivation of several targets, including Bad (7), forkhead transcription factors (8), c-Raf (9) and caspase-9. PTEN phosphatase is a major negative regulator of the PI3 kinase/Akt signaling pathway (10). LY294002 is a specific PI3 kinase inhibitor (11). Another essential Akt function is the regulation of glycogen synthesis through phosphorylation and inactivation of GSK-3 α and β (12,13). Akt may also play a role in insulin stimulation of glucose transport (12). In addition to its role in survival and glycogen synthesis, Akt is involved in cell cycle regulation by preventing GSK-3 β mediated phosphorylation and degradation of cyclin D1 (14) and by negatively regulating the cyclin dependent kinase inhibitors p27 Kip (15) and p21 Waf1/CIP1 (16). Akt also plays a critical role in cell growth by directly phosphorylating mTOR in a rapamycin-sensitive complex containing raptor (17). More importantly, Akt phosphorylates and inactivates tuberlin (TSC2), an inhibitor of mTOR within the mTOR-raptor complex (18). Inhibition of mTOR stops the protein synthesis machinery by inactivating p70 S6 kinase and activating the eukaryotic initiation factor 4E binding protein 1 (4E-BP1), an inhibitor of translation (18,19).

Background References:

- (1) Franke, T.F. et al. (1997) *Cell* 88, 435-7.
- (2) Burgering, B.M. and Coffey, P.J. (1995) *Nature* 376, 599-602.
- (3) Franke, T.F. et al. (1995) *Cell* 81, 727-36.
- (4) Alessi, D.R. et al. (1996) *EMBO J* 15, 6541-51.
- (5) Sarbassov, D.D. et al. (2005) *Science* 307, 1098-101.
- (6) Jacinto, E. et al. (2006) *Cell* 127, 125-37.
- (7) Cardone, M.H. et al. (1998) *Science* 282, 1318-21.
- (8) Brunet, A. et al. (1999) *Cell* 96, 857-68.
- (9) Zimmermann, S. and Moelling, K. (1999) *Science* 286, 1741-4.
- (10) Cantley, L.C. and Neel, B.G. (1999) *Proc Natl Acad Sci USA* 96, 4240-5.
- (11) Vlahos, C.J. et al. (1994) *J Biol Chem* 269, 5241-8.
- (12) Hajdúch, E. et al. (2001) *FEBS Lett* 492, 199-203.
- (13) Cross, D.A. et al. (1995) *Nature* 378, 785-9.
- (14) Diehl, J.A. et al. (1998) *Genes Dev* 12, 3499-511.
- (15) Gesbert, F. et al. (2000) *J Biol Chem* 275, 39223-30.
- (16) Zhou, B.P. et al. (2001) *Nat Cell Biol* 3, 245-52.
- (17) Navé, B.T. et al. (1999) *Biochem J* 344 Pt 2, 427-31.
- (18) Inoki, K. et al. (2002) *Nat Cell Biol* 4, 648-57.
- (19) Manning, B.D. et al. (2002) *Mol Cell* 10, 151-62.

PathScan® Sandwich ELISA Protocol (for kits with Lyophilized Antibodies)

A Solutions and Reagents

NOTE: Prepare solutions with purified water.

- Microwell strips:** Bring all to room temperature before use.
- Detection Antibody:** Supplied lyophilized as a green colored cake or powder. Add 1.0 ml of Detection Antibody Diluent 2 (green solution) to yield a concentrated stock solution. Incubate at room temperature for 5 min with occasional gentle mixing to fully reconstitute. To make the final working solution, add the full 1.0 ml volume of reconstituted Detection Antibody to 10.0 ml of Detection Antibody Diluent 2 in a clean tube and gently mix. Unused working solution may be stored for 4 weeks at 4°C.
- HRP-Linked Antibody*:** Supplied lyophilized as a red colored cake or powder. Add 1.0 ml of HRP Diluent (red solution) to yield a concentrated stock solution. Incubate at room temperature for 5 min with occasional gentle mixing to fully reconstitute. To make the final working solution, add the full 1.0 ml volume of reconstituted HRP-Linked Antibody to 10.0 ml of HRP Diluent in a clean tube and gently mix. Unused working solution may be stored for 4 weeks at 4°C.
- Detection Antibody Diluent 2:** Green colored diluent for reconstitution and dilution of the detection antibody (11 ml provided).
- HRP Diluent:** Red colored diluent for reconstitution and dilution of the HRP-Linked Antibody (11 ml provided).
- Sample Diluent:** Blue colored diluent provided for dilution of cell lysates.
- 1X Wash Buffer:** Prepare by diluting 20X Wash Buffer (included in each PathScan® Sandwich ELISA Kit) in purified water.
- Cell Lysis Buffer:** 10X Cell Lysis Buffer #9803: This buffer can be stored at 4°C for short-term use (1–2 weeks). Recommended: Add 1 mM phenylmethyl-sulfonyl fluoride (PMSF) immediately before use.
- TMB Substrate** (#7004).
- STOP Solution** (#7002).

*Note: Some PathScan® ELISA Kits may include HRP-Linked Streptavidin in place of HRP-Linked Antibody.

B Preparing Cell Lysates

For adherent cells.

- Aspirate media when the culture reaches 80–90% confluence. Treat cells by adding fresh media containing regulator for desired time.
- Remove media and rinse cells once with ice-cold 1X PBS.
- Remove PBS and add 0.5 ml ice-cold 1X Cell Lysis Buffer plus 1 mM PMSF to each plate (10 cm diameter) and incubate the plate on ice for 5 min.
- Scrape cells off the plate and transfer to an appropriate tube. Keep on ice.
- Sonicate lysates on ice.
- Microcentrifuge for 10 min (14,000 rpm) at 4°C and transfer the supernatant to a new tube. The supernatant is the cell lysate. Store at –80°C in single-use aliquots.

For suspension cells

- Remove media by low speed centrifugation (~1200 rpm) when the culture reaches 0.5–1.0 × 10⁶ viable cells/ml. Treat cells by adding fresh media containing regulator for desired time.
- Collect cells by low speed centrifugation (~1200 rpm) and wash once with 5–10 ml ice-cold 1X PBS.
- Cells harvested from 50 ml of growth media can be lysed in 2.0 ml of 1X Cell Lysis Buffer plus 1 mM PMSF.
- Sonicate lysates on ice.
- Microcentrifuge for 10 min (14,000 rpm) at 4°C and transfer the supernatant to a new tube. The supernatant is the cell lysate. Store at –80°C in single-use aliquots.

C Test Procedure

- After the microwell strips have reached room temperature, break off the required number of microwells. Place the microwells in the strip holder. Unused microwells must be resealed and stored at 4°C immediately.
- Cell lysates can be undiluted or diluted with Sample Diluent (supplied in each PathScan® Sandwich ELISA Kit, blue color). Individual datasheets for each kit provide a sensitivity curve that serves as a reference for selection of an appropriate starting lysate concentration. The sensitivity curve shows typical kit assay results across a range of lysate concentration points.
- Add 100 µl of each undiluted or diluted cell lysate to the appropriate well. Seal with tape and press firmly onto top of microwells. Incubate the plate for 2 hr at 37°C. Alternatively, the plate can be incubated overnight at 4°C.
- Gently remove the tape and wash wells:
 - Discard plate contents into a receptacle.
 - Wash 4 times with 1X Wash Buffer, 200 µl each time for each well.
 - For each wash, strike plates on fresh towels hard enough to remove the residual solution in each well, but do not allow wells to completely dry at any time.
 - Clean the underside of all wells with a lint-free tissue.
- Add 100 µl of reconstituted Detection Antibody (green color) to each well (refer to Section A, Step 2). Seal with tape and incubate the plate at 37°C for 1 hr.
- Repeat wash procedure (Section C, Step 4).
- Add 100 µl of reconstituted HRP-Linked secondary antibody (red color) to each well (refer to Section A, Step 3). Seal with tape and incubate the plate for 30 min at 37°C.
- Repeat wash procedure (Section C, Step 4).
- Add 100 µl of TMB Substrate to each well. Seal with tape and incubate the plate for 10 min at 37°C or 30 min at 25°C.
- Add 100 µl of STOP Solution to each well. Shake gently for a few seconds.

NOTE: Initial color of positive reaction is blue, which changes to yellow upon addition of STOP Solution.

- Read results.
 - Visual Determination:** Read within 30 min after adding STOP Solution.
 - Spectrophotometric Determination:** Wipe underside of wells with a lint-free tissue. Read absorbance at 450 nm within 30 min after adding STOP Solution.