

HTScan® PKC α Kinase Assay Kit

✓ 100 Assays
(96 Well Format)



Orders ■ 877-616-CELL (2355)
orders@cellsignal.com

Support ■ 877-678-TECH (8324)
info@cellsignal.com

Web ■ www.cellsignal.com

rev. 02/23/16

For Research Use Only. Not For Use In Diagnostic Procedures.

Products Included	Product #	Kit Quantity
Phospho-PKA Substrate (RRXS/T) (100G7) Rabbit mAb	9624	30 μ l
Kinase Buffer (10X)	9802	15 ml
ATP (10mM)	9804	1 ml
CREB (Ser133) Biotinylated Peptide	1331	1.25 ml
PKC α Kinase	7578	5 μ g

Description: The kit provides a means of performing kinase activity assays with recombinant human PKC α kinase. It includes active PKC α kinase (supplied as a GST fusion protein), a biotinylated peptide substrate and a phosphoserine/threonine antibody for detection of the phosphorylated form of the substrate peptide.

Peptide Core Sequence: RRPS*YRK

Molecular Weights: Peptide substrate, Biotin-CREB (Ser133): 2,326 Daltons. GST-PKC α Kinase: 110 kDa.

Source/Purification: The GST-Kinase fusion protein was produced using a baculovirus expression system with a construct expressing full length human PKC α (Met1-Val672) (GenBank Accession No. NM_002737) with an amino-terminal GST tag. The protein was purified by one-step affinity chromatography using glutathione-agarose.

Quality Control: The substrate peptide was selected using our Serine/Threonine Kinase Substrate Screening Kit #7400. Phospho-PKA Substrate (RRXS/T) (100G7) Rabbit mAb #9624 was used for detection. The quality of the biotinylated peptide was evaluated by reverse-phase HPLC and by mass spectrometry.

Purified PKC α kinase was quality controlled for purity by SDS-PAGE followed by Coomassie stain and Western blot. The specific activity of the PKC α kinase was determined using a radiometric assay [Fig.1]. Time course [Fig.2], kinase dose dependency [Fig.3] and substrate dose-dependency [Fig.4] assays were performed to verify PKC α activity using the PKC α substrate peptide provided in this kit. PKC α sensitivity to the inhibitor staurosporine was measured using the PKC α substrate peptide provided in this kit [Fig.5].

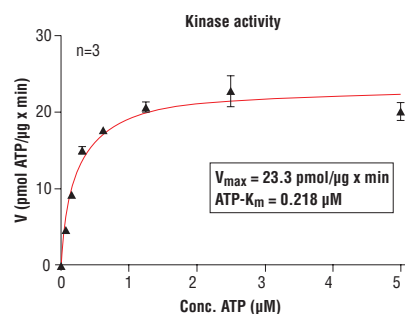


Figure 1. PKC α kinase activity was measured in a radiometric assay using the following reaction conditions: 60 mM HEPES-NaOH, pH 7.5, 3 mM MgCl₂, 3 mM MnCl₂, 3 μ M Na-orthovanadate, 1.2 mM DTT, 1 μ M ATP, 2.5 μ g/50 μ l PEG20,000, Substrate: Histone H1, 5 μ g/50 μ l and Recombinant PKC α : 25 ng/50 μ l.

Storage: Antibodies are supplied in 10 mM sodium HEPES (pH 7.5), 150 mM NaCl, 100 μ g/ml BSA and 50% glycerol. Do not aliquot the antibodies. Peptides are supplied at 6 μ M in 0.001% DMSO. Enzymes are supplied in 50 mM Tris-HCL (pH 8.0), 100 mM NaCl, 5 mM DTT, 15 mM reduced glutathione and 20% glycerol. Store at -80°C.

Keep enzymes on ice during use.

Avoid repeated freeze-thaw cycles.

Companion Products:

Serine/Threonine Kinase Substrate Screening Kit #7400

PKC α Kinase #7578

Phospho-PKA Substrate (RRXS/T) (100G7) Rabbit mAb #9624

CREB (Ser133) Biotinylated Peptide #1331

Staurosporine #9953

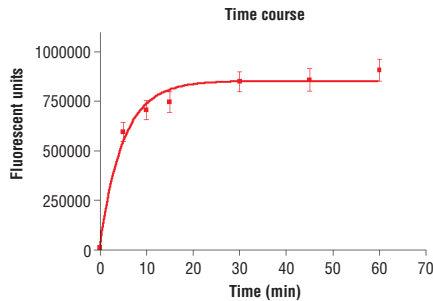


Figure 2. Time course of PKC α kinase activity: DELFIA® data generated using Phospho-PKA Substrate (RRXS/T) (100G7) Rabbit mAb #9624 to detect phosphorylation of PKC α substrate peptide (#1331) by PKC α kinase. In a 50 μ l reaction, 10 ng PKC α and 1.5 μ M substrate peptide were used per reaction. (DELFIA® is a registered trademark of PerkinElmer, Inc.)

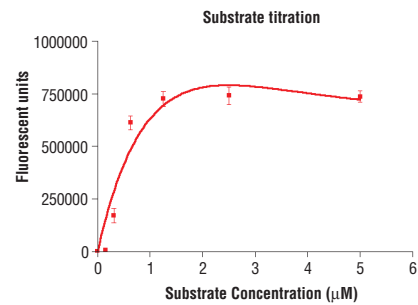


Figure 4. Peptide concentration dependence of PKC α kinase activity: DELFIA® data generated using Phospho-PKA Substrate (RRXS/T) (100G7) Rabbit mAb #9624 to detect phosphorylation of substrate peptide (#1331) by PKC α kinase. In a 50 μ l reaction, 10 ng of PKC α and increasing concentrations of substrate peptide were used per reaction at room temperature for 15 minutes. (DELFIA® is a registered trademark of PerkinElmer, Inc.)

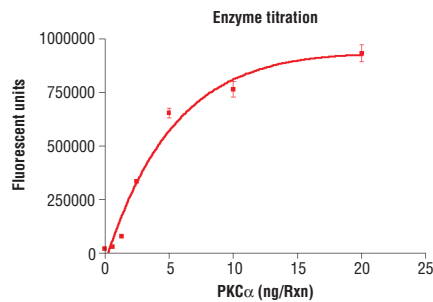


Figure 3. Dose dependence curve of PKC α kinase activity: DELFIA® data generated using Phospho-PKA Substrate (RRXS/T) (100G7) Rabbit mAb #9624 to detect phosphorylation of substrate peptide (#1331) by PKC α kinase. In a 50 μ l reaction, increasing amounts of PKC α and 1.5 μ M substrate peptide were used per reaction at room temperature for 15 minutes. (DELFIA® is a registered trademark of PerkinElmer, Inc.)

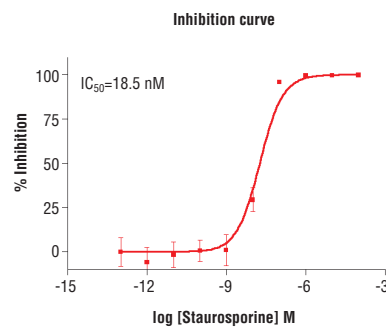


Figure 5. Staurosporine inhibition of PKC α kinase activity: DELFIA® data generated using Phospho-PKA Substrate (RRXS/T) (100G7) Rabbit mAb #9624 to detect phosphorylation of PKC α substrate peptide (#1331) by PKC α kinase. In a 50 μ l reaction, 10 ng PKC α , 1.5 μ M substrate peptide, 20 μ M ATP and increasing amounts of staurosporine were used per reaction at room temperature for 15 minutes. (DELFIA® is a registered trademark of PerkinElmer, Inc.)

Background: Activation of PKC is one of the earliest events in a cascade leading to a variety of cellular responses such as secretion, gene expression, proliferation and muscle contraction (1,2). PKC isoforms have been classified into three groups: classical PKCs, which are Ca²⁺ dependent via their C2 domains and are activated by phosphatidylserine (PS), diacylglycerol (DAG) and phorbol esters (TPA or PMA) through their cysteine-rich C1 domains; novel PKCs, which are Ca²⁺ independent but are still regulated by PS, DAG and TPA; and atypical PKCs, which are Ca²⁺ independent and do not require PS, DAG or TPA for their activation (3-7). Members of these three PKC groups contain a pseudo-substrate or autoinhibitory domain that binds to the substrate binding site in the catalytic domain, preventing its activation in the absence of cofactors or activators.

Other members have been recently added to the PKC superfamily based on homology within the catalytic domain. PKC, or PKD, is regulated by DAG and TPA through its C1 domain. However, PKD is distinguished by a PH domain, as well as by its unique substrate recognition and Golgi localization. The PKC-related kinases, or PRKs, lack a C1 domain and thus do not respond to DAG or phorbol esters. Instead, they can be activated by phosphatidylinositol lipids and their kinase activity is directly regulated by small GTPases of the Rho family through Rho binding to the homology region 1 (HR1).

The activity of PKC is under the control of three distinct phosphorylation events. Specifically, Thr500 in the activation loop, the Thr641 autophosphorylation site and the Ser660 hydrophobic site at the carboxy terminus of PKC β II are phosphorylated *in vivo* (2). For the atypical PKC isoforms, there is no phosphorylation in the hydrophobic region, which has a glutamic acid residue in place of the serine or threonine residue found in other PKC isoforms. The enzyme PDK1, or perhaps a close relative, is responsible for PKC activation.

PKC α consists of 672 amino acids and is expressed ubiquitously. It performs important roles in the control of major cellular functions such as cell proliferation, apoptosis, differentiation and motility. PKC α is also associated with the malignant phenotype of several tumors, such as gliomas and breast cancers (10,11).

Background References:

- (1) Nishizuka, Y. (1984) *Nature* 308, 693–698.
- (2) Keranen, L.M. et al. (1995) *Curr. Biol.* 5, 1394–1403.
- (3) Newton, A.C. (1995) *J. Biol. Chem.* 270, 28495–28498.
- (4) Mellor, H. and Parker, P.J. (1998) *Biochem. J.* 332, 281–292.
- (5) Ron, D. and Kazanietz, M.G. (1999) *FASEB J.* 13, 1658–1676.
- (6) Way, K.J. et al. (2000) *Trends Pharmacol. Sci.* 21, 181–187.
- (7) Moscat, J. and Diaz-Meco, M.T. (2000) *EMBO Rep.* 1, 399–403.
- (8) Good, J.A. et al. (1998) *Science* 281, 2042–2045.
- (9) Sonnenburg, E.D. (2001) *J. Biol. Chem.* 276, 45289–45297.
- (10) Nakashima, S. (2002) *J. Biochem. (Tokyo)* 132, 669–75.
- (11) Mackay, H.J. and Twelves, C.J. (2003) *Endocr. Relat. Cancer* 10, 389–96.

Protocol for HTScan® PKC α Kinase Assay Kit

Kinase

Note: Lot-specific information for this kinase is provided on the enzyme vial. Optimal assay incubation times and enzyme concentrations must be determined empirically for each lot of kinase under specified conditions.

A Additional Solutions and Reagents (Not included)

1. **Wash Buffer:** 1X PBS, 0.05% Tween-20 (PBS/T)
2. Bovine Serum Albumin (BSA)
3. **Stop Buffer:** 50 mM EDTA pH 8

DELFI[®] is a registered trademark of PerkinElmer Life Sciences

B Suggested Protocol for 100 Assays

1. Add 100 μ l 10 mM ATP to 1.25 ml 6 μ M substrate peptide. Dilute the mixture with dH₂O to 2.5 ml to make 2X ATP/substrate cocktail ([ATP]=400 μ M, [substrate] = 3 μ M).
2. Transfer enzyme from -80°C to ice. Allow enzyme to thaw on ice.
3. **Microcentrifuge briefly at 4°C to bring liquid to the bottom of the vial. Return immediately to ice.**
4. Add 1 ml 10X kinase buffer [1 ml 10X Kinase Buffer 250 mM Tris-HCl pH 7.5, 100 mM MgCl₂, 1 mM Na₃VO₄, 50 mM β -glycerophosphate, 20 mM dithiothreitol (DTT)] to 1.5 ml dH₂O to make 2.5 ml 4X reaction buffer.
5. Transfer 1.2 ml of 4X Reaction buffer to each enzyme tube to make 4X reaction cocktail ([enzyme] = 4 ng/ μ l in 4X reaction cocktail).
6. Add 12.5 μ l of the 4X reaction cocktail to 12.5 μ l/well of prediluted compound of interest (usually around 10 μ M) and incubate for 5 minutes at room temperature.
7. Add 25 μ l of 2X ATP/substrate cocktail to 25 μ l/well preincubated reaction cocktail/compound.

Final Assay Conditions for a 50 μ l Reaction

25 mM Tris-HCl (pH 7.5)
10 mM MgCl₂
5 mM β -glycerophosphate
0.1 mM Na₃VO₄
2 mM DTT
200 μ M ATP
1.5 μ M peptide
10 ng PKC α Kinase

8. Incubate reaction plate at room temperature for 30 minutes.
9. Add 50 μ l/well Stop Buffer (50 mM EDTA, pH 8) to stop the reaction.
10. Transfer 25 μ l of each reaction to a 96-well streptavidin-coated plate containing 75 μ l dH₂O/well and incubate at room temperature for 60 minutes.
11. *Wash three times with 200 μ l/well PBS/T.
12. Dilute primary antibody, Phospho-PKA Substrate (RRXS/T) (100G7) Rabbit mAb #9624, 1:1000 in PBS/T with 1% BSA. Add 100 μ l/well primary antibody.
13. Incubate at room temperature for 120 minutes.
14. *Wash three times with 200 μ l/well PBS/T.
15. For DELFIA[®] or Colorimetric ELISA detection methods please use the following protocols.

DELFI[®] Assay

1. Prepare appropriate dilution of Europium labeled secondary antibody in PBS/T with 1% BSA (1:500 dilution for anti-mouse IgG or 1:1000 for anti-rabbit IgG).
 2. Add 100 μ l/well secondary antibody solution.
 3. Incubate at room temperature for 30 minutes.
 4. *Wash five times with 200 μ l/well PBS/T.
 5. Add 100 μ l/well DELFIA[®] Enhancement Solution.
 6. Incubate at room temperature for 5 minutes.
 7. Read plate using a Time Resolved Fluorescent plate reader using the following settings;
 - a. Excitation Filter: 340 nm
 - b. Emission Filter: 615 nm
 - c. Delay^{**}: 400 μ s
- ^{**} Delay time is the delay from the excitation pulse to the beginning of the measurement.

Companion Products for DELFIA[®]

DELFI[®] Europium-labeled Anti-mouse IgG (PerkinElmer Life Sciences #AD0124)
DELFI[®] Europium-labeled Anti-rabbit IgG (PerkinElmer Life Sciences #AD0105)
DELFI[®] Enhancement Solution (PerkinElmer Life Sciences #1244-105)
DELFI[®] Streptavidin coated, 96-well, yellow plate (PerkinElmer Life Sciences AAAND-0005)

Colorimetric ELISA Assay

1. Prepare appropriate dilution of HRP labeled secondary antibody in PBS/T with 1% BSA (1:500 dilution for anti-mouse IgG or 1:1000 for anti-rabbit IgG).
2. Add 100 μ l/well secondary antibody solution.
3. Incubate at room temperature for 30 minutes.
4. *Wash five times with 200 μ l/well PBS/T.
5. Add 100 μ l/well TMB substrate.
6. Incubate at room temperature for 15 minutes.
7. Add 100 μ l/well of stop solution.
8. Mix well.
9. Read the absorbance at 450 nm with a microtiter plate reader.

Companion Products For Colorimetric ELISA Assay

Anti-mouse IgG, HRP Linked Antibody #7076
Anti-rabbit IgG, HRP Linked Antibody #7074
TMB Solution #7004
Stop Solution #7002

***NOTE:** Use of an automated microplate washer as well as centrifugation of plates when appropriate, greatly improves reproducibility.

Please contact Cell Signaling Technology for HTS-ready antibodies (PBS formulated and carrier-free), and detailed peptide substrate sequence information.
Email: drugdiscovery@cellsignal.com