

Store at
-20°C

ENPP3/CD203c Antibody

#75442



Support: +1-978-867-2388 (U.S.)
www.cellsignal.com/support

Orders: 877-616-2355 (U.S.)
orders@cellsignal.com

Entrez-Gene ID #5169
UniProt ID #014638

New 09/17

For Research Use Only. Not For Use In Diagnostic Procedures.

Applications W, IP Endogenous	Species Cross-Reactivity* H, M	Molecular Wt. 140 kDa	Source Rabbit**
-------------------------------------	-----------------------------------	--------------------------	--------------------

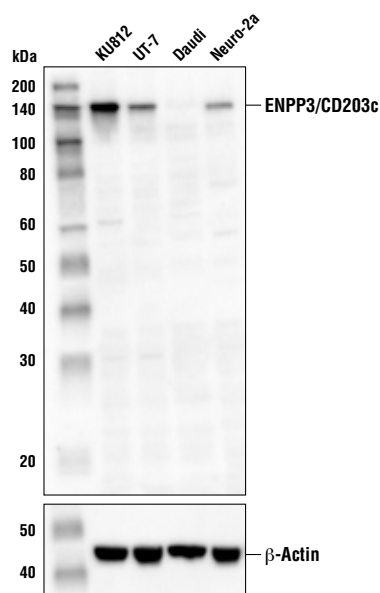
Background: Ectonucleotide pyrophosphatase/phosphodiesterase 3 (ENPP3/CD203c/PD-1beta) is a type-II transmembrane glycoprotein that contains a large extracellular domain, an α -helical transmembrane segment, and a short cytoplasmic domain containing the N-terminus. ENPP3 has been shown to be overexpressed in colon carcinoma and is thought to play a role in tumor initiation and tumor cell invasiveness (1-3). Within the hematopoietic cell compartment, ENPP3 is a cell surface marker of basophil and mast cell lineages (4,5). Indeed, ENPP3 is overexpressed on transformed mast cells in patients with systemic mastocytosis (6). Recently, ENPP3 has been identified as being highly overexpressed in renal cell carcinoma (RCC) and may have potential as a novel therapeutic target for this disease (7).

Background References:

- (1) Yano, Y. et al. (2003) *Int J Mol Med* 12, 763-6.
- (2) Meerson, N.R. et al. (2000) *J Cell Sci* 113 Pt 23, 4193-202.
- (3) Deissler, H. et al. (1999) *FASEB J* 13, 657-66.
- (4) Bühring, H.J. et al. (1999) *Blood* 94, 2343-56.
- (5) Bühring, H.J. et al. (2001) *Blood* 97, 3303-5.
- (6) Hauswirth, A.W. et al. *Int J Immunopathol Pharmacol* 21, 797-806.
- (7) Doñate, F. et al. (2016) *Clin Cancer Res* 22, 1989-99.

Specificity/Sensitivity: ENPP3/CD203c Antibody recognizes endogenous levels of total ENPP3/CD203c protein. This antibody does not cross-react with either ENPP1 or ENPP2 proteins.

Source/Purification: Polyclonal antibodies are produced by immunizing animals with a synthetic peptide corresponding to residues near the carboxy terminus of human ENPP3/CD203c protein. Antibodies are purified by protein A and peptide affinity chromatography.



Western blot analysis of extracts from various cell lines using ENPP3/CD203c Antibody (upper) and β -Actin (D6A8) Rabbit mAb #8457 (lower). As expected, ENPP3/CD203c protein is not detected in Daudi cells.

Storage: Supplied in 10 mM sodium HEPES (pH 7.5), 150 mM NaCl, 100 μ g/ml BSA and 50% glycerol. Store at -20°C . Do not aliquot the antibody.

*Species cross-reactivity is determined by western blot.

**Anti-rabbit secondary antibodies must be used to detect this antibody.

Recommended Antibody Dilutions:

Western blotting	1:1000
Immunoprecipitation	1:50

For product specific protocols and a complete listing of recommended companion products please see the product web page at www.cellsignal.com

IMPORTANT: For western blots, incubate membrane with diluted antibody in 5% w/v nonfat dry milk, 1X TBS, 0.1% Tween[®]20 at 4°C with gentle shaking, overnight.

Tween is a registered trademark of ICI Americas, Inc.

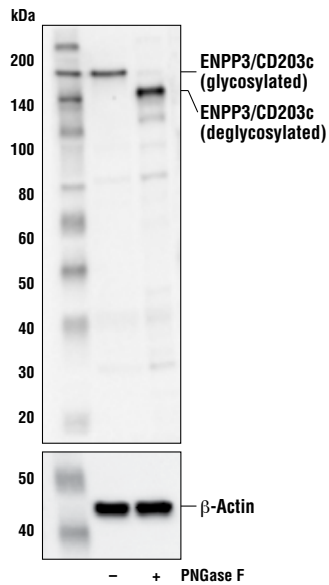
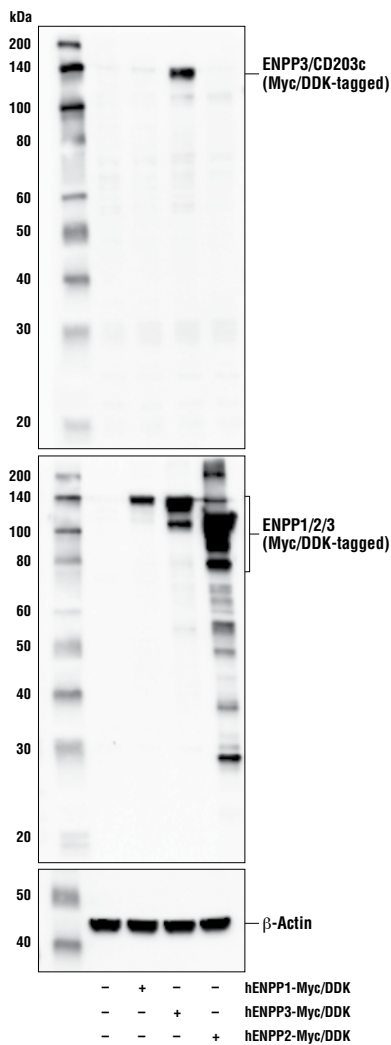
Thank you for your recent purchase. If you would like to provide a review visit cellsignal.com/comments.

www.cellsignal.com

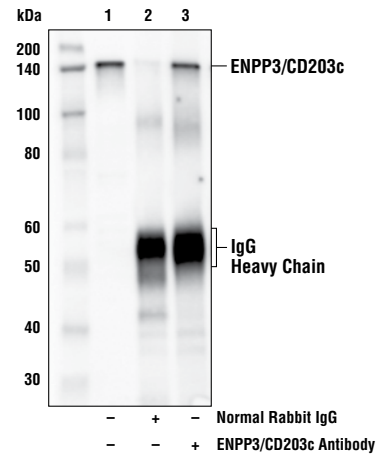
© 2017 Cell Signaling Technology, Inc.

Cell Signaling Technology is a trademark of Cell Signaling Technology, Inc.

Applications: W—Western IP—Immunoprecipitation IHC—Immunohistochemistry ChIP—Chromatin Immunoprecipitation IF—Immunofluorescence F—Flow cytometry E-P—ELISA-Peptide Species Cross-Reactivity: H—human M—mouse R—rat Hm—hamster Mk—monkey Mi—mink C—chicken Dm—D. melanogaster X—Xenopus Z—zebrafish B—bovine Dg—dog Pg—pig Sc—S. cerevisiae Ce—C. elegans Hr—Horse All—all species expected Species enclosed in parentheses are predicted to react based on 100% homology.



Western blot analysis of extracts from KU812 cells, untreated (-) or treated with PNGase F (+), using ENPP3/CD203c Antibody (upper) and β -Actin (D6A8) Rabbit mAb #8457 (lower).



Immunoprecipitation of ENPP3/CD203c from KU812 cell extracts. Lane 1 is 10% input, lane 2 is Normal Rabbit IgG #2729, and lane 3 is ENPP3 Antibody. Western blot analysis was performed using ENPP3/CD203c Antibody. Anti-rabbit heavy chain-specific secondary antibody was used for detection.

Thank you for your recent purchase. If you would like to provide a review visit [cellsignal.com/comments](https://www.cellsignal.com/comments).

www.cellsignal.com